

V&V Reference Report

L2 ASCDS Version : 7.6.7.2

Observation 60352 - L2 Version 001
Chandra X-Ray Center

L2 Processing Date : May 31 2006

Contents

1	Front	2
2	OBI	3
2.1	OBI	3
2.1.1	Images	3
2.1.2	Bias	3
2.1.3	Parameters	4
2.1.4	Events	4
2.2	Compared Parameters	5
2.3	Aspect	6
2.4	Star Slots	8
2.5	FID Slots	8
A	Summary	9
A.1	Status	9
A.2	Comments	9

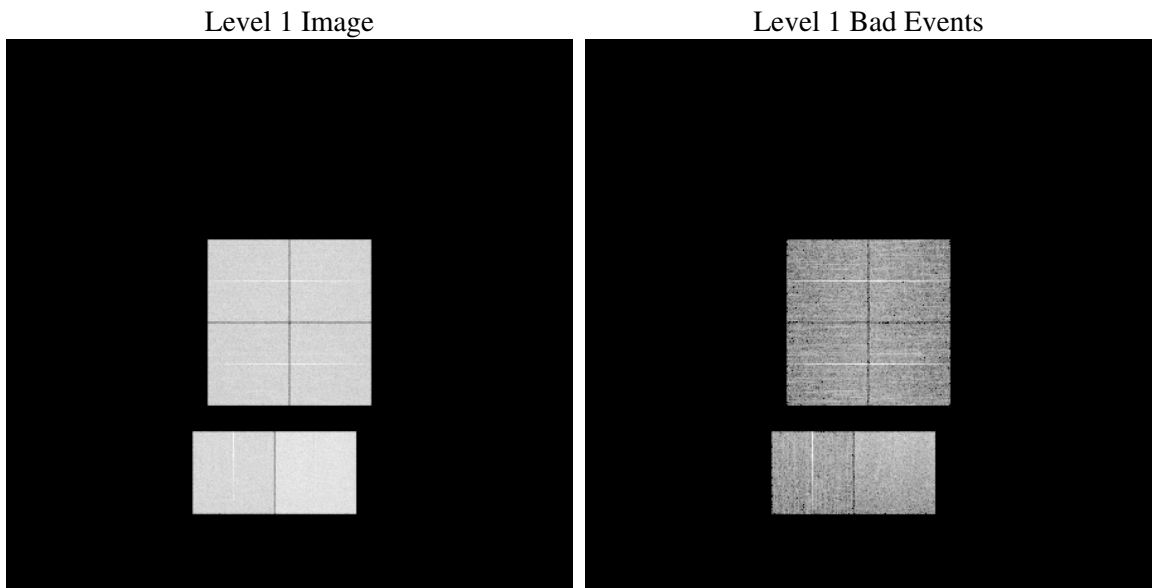
1 Front

seq_num	
obs_id	60352
title	ACIS-012367 diagnostics
observer	CHANDRA engineering request/realtime commanding
object	
dtcycle	0
cycle	P
ra_targ	0.0
dec_targ	0.0
ra_nom	158.02795870446
dec_nom	3.9936966178963
roll_nom	314.3597344116
revision	2
ontime	8463.9999684691
livetime	8356.8237044595
ontime0	6114.2950806618
ontime1	6247.1760265231
ontime2	5799.9207831919
ontime3	5926.318983227
ontime6	6370.3325689733
ontime7	8463.9999684691
l2events	1218128

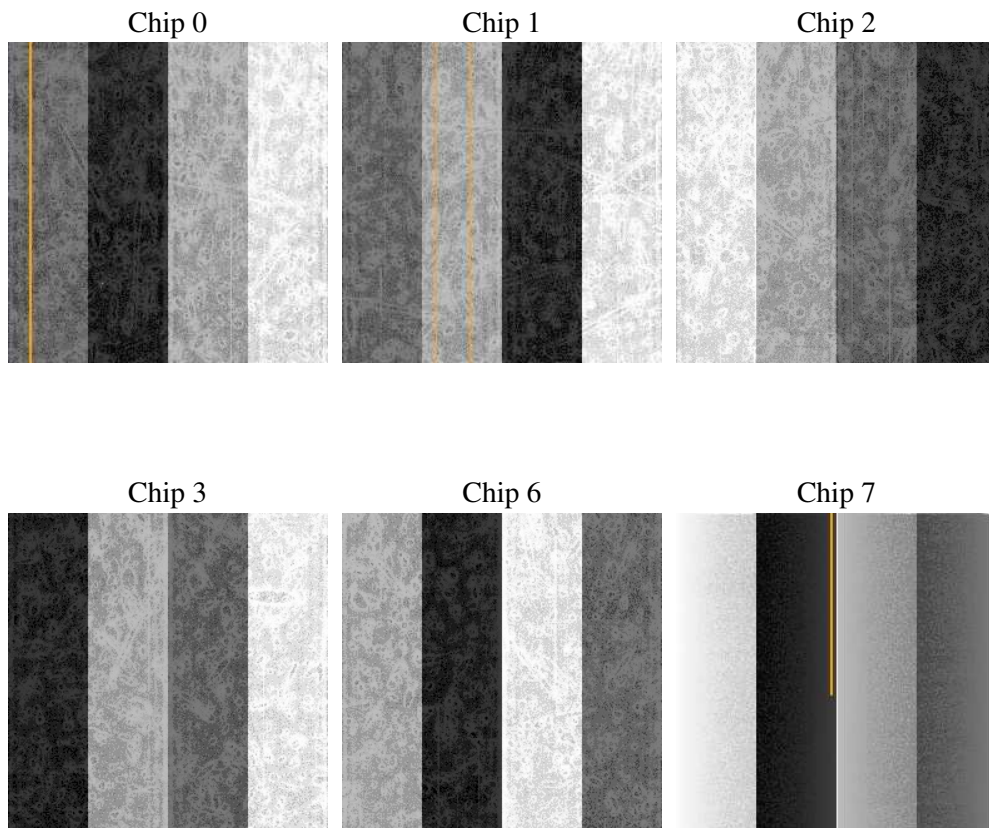
2 OBI

2.1 OBI

2.1.1 Images



2.1.2 Bias



2.1.3 Parameters

obi_num	0
ascdsver	7.6.7.2
caldbver	3.2.2
date	2006-05-31T20:18:19
revision	2

sched_exp_time	0.0
ontime	8465.5016607642
ontime0	6115.7967729568
ontime1	6248.6777188182
ontime2	5801.422475487
ontime3	5927.8206755221
ontime6	6371.8342612684
ontime7	8465.5016607642
l1events	1535347

2.1.4 Events

	ccd 0	ccd 1	ccd 2	ccd 3	ccd 6	ccd 7
level 1 events	234903	241116	227908	234062	258168	339190
rejected events	37863	39594	39142	40021	42899	58098
rejected %	16%	16%	17%	17%	16%	17%

	ccd 0	ccd 1	ccd 2	ccd 3	ccd 6	ccd 7
grade 0 events	108684	110264	105729	108966	117086	47598
	46%	45%	46%	46%	45%	14%
grade 1 events	581	512	654	645	545	121
	0%	0%	0%	0%	0%	0%
grade 2 events	34420	35934	31837	33096	37042	86216
	14%	14%	13%	14%	14%	25%
grade 3 events	12675	12771	12252	12770	13386	19702
	5%	5%	5%	5%	5%	5%
grade 4 events	12731	12698	12234	12558	13304	19583
	5%	5%	5%	5%	5%	5%
grade 5 events	2638	2705	2415	2605	2996	6951
	1%	1%	1%	1%	1%	2%
grade 6 events	28530	29855	26714	26651	34451	107993
	12%	12%	11%	11%	13%	31%
grade 7 events	34644	36377	36073	36771	39358	51026
	14%	15%	15%	15%	15%	15%

2.2 Compared Parameters

Parameter	Planned	Actual	Parameter	Planned	Actual
Instrument	ACIS	ACIS	Obspar format version number	6	6
Detector	ACIS-012367	ACIS-012367	Obspar file type	PREDICTED	ACTUAL
Grating	NONE	NONE	Obspar update status	NONE	UPDATED
Data mode	FAINT	FAINT	On-chip summing requested	N	N
Observation mode	SECONDARY	SECONDARY	Subarray requested	NONE	NONE
Pointing RA	0	158.0279587044584	Alternating exposures requested	N	N
Pointing Dec	0	3.99369661789627	Primary exposure time	0.000000	3.2
Pointing Roll	0.0	314.3597344115952			
SIM focus pos (mm)	-0.782348	-0.6828225247311905			
SIM defocus (mm)	0	0.8505141146731063			
SIM translation stage pos (mm)	-233.592463	250.4635187648994			
SIM translation stage offset (mm)	0	-0.007540371344731511			
Observation start time	194454657.210136	194454656.18543			
Observation start date	2004-02-29T15:10:57	2004-02-29T15:10:56			
Observation end time	194476073.561074	194476072.53637			
Observation end date	2004-02-29T21:07:54	2004-02-29T21:07:52			
Read mode	TIMED	TIMED			

2.3 Aspect

2.4 Star Slots

2.5 FID Slots

A Summary

A.1 Status

V&V Scientist	Jen Lauer
V&V Date (YYYY-MM-DD)	2006.06.01
V&V Edition	1
V&V Disposition and Status	OK
V&V Charge Time	8.46399996

A.2 Comments

The ACIS focal plane temperature dropped by more than a degree during the course of this observation.