

V&V Reference Report

L2 ASCDS Version : 7.6.7.2

Observation 60262 - L2 Version 001
Chandra X-Ray Center

L2 Processing Date : May 20 2006

Contents

1	Front	2
2	OBI	3
2.1	OBI	3
2.1.1	Images	3
2.1.2	Bias	3
2.1.3	Parameters	4
2.1.4	Events	4
2.2	Compared Parameters	5
2.3	Aspect	6
2.4	Star Slots	8
2.5	FID Slots	8
A	Summary	9
A.1	Status	9
A.2	Comments	9

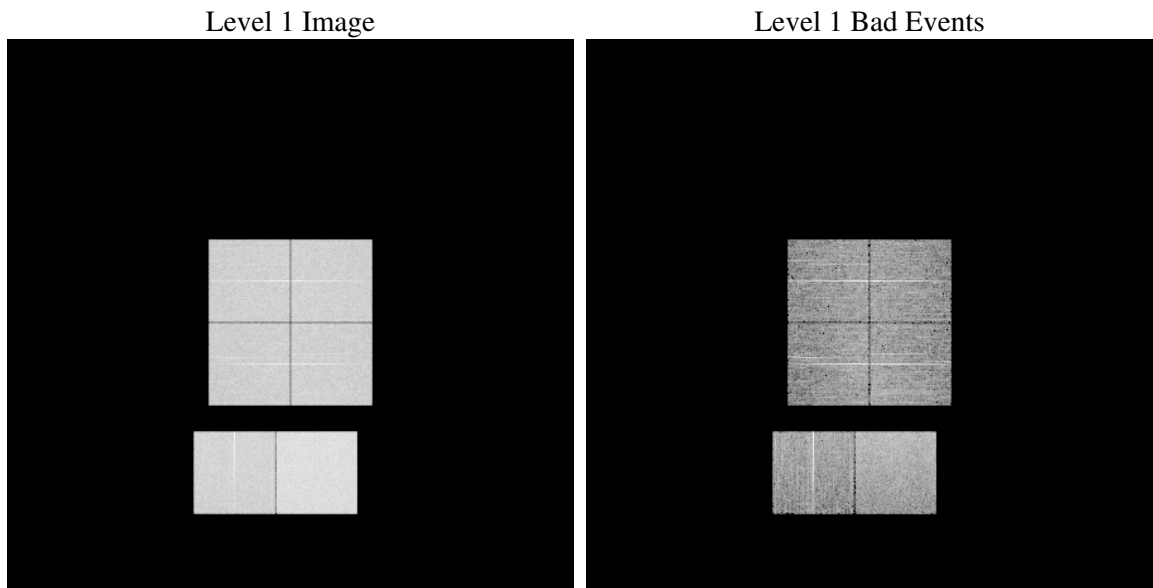
1 Front

seq_num	
obs_id	60262
title	ACIS-012367 diagnostics
observer	CHANDRA engineering request/realtime commanding
object	
dtcycle	0
cycle	P
ra_targ	0.0
dec_targ	0.0
ra_nom	223.97138198091
dec_nom	1.5014844214281
roll_nom	144.06412388693
revision	2
ontime	8393.5999687314
livetime	8287.3151519082
ontime0	6223.4068042636
ontime1	6307.7126733959
ontime2	5920.7357182205
ontime3	6021.2062164247
ontime6	6497.6301241517
ontime7	8393.5999687314
l2events	1187179

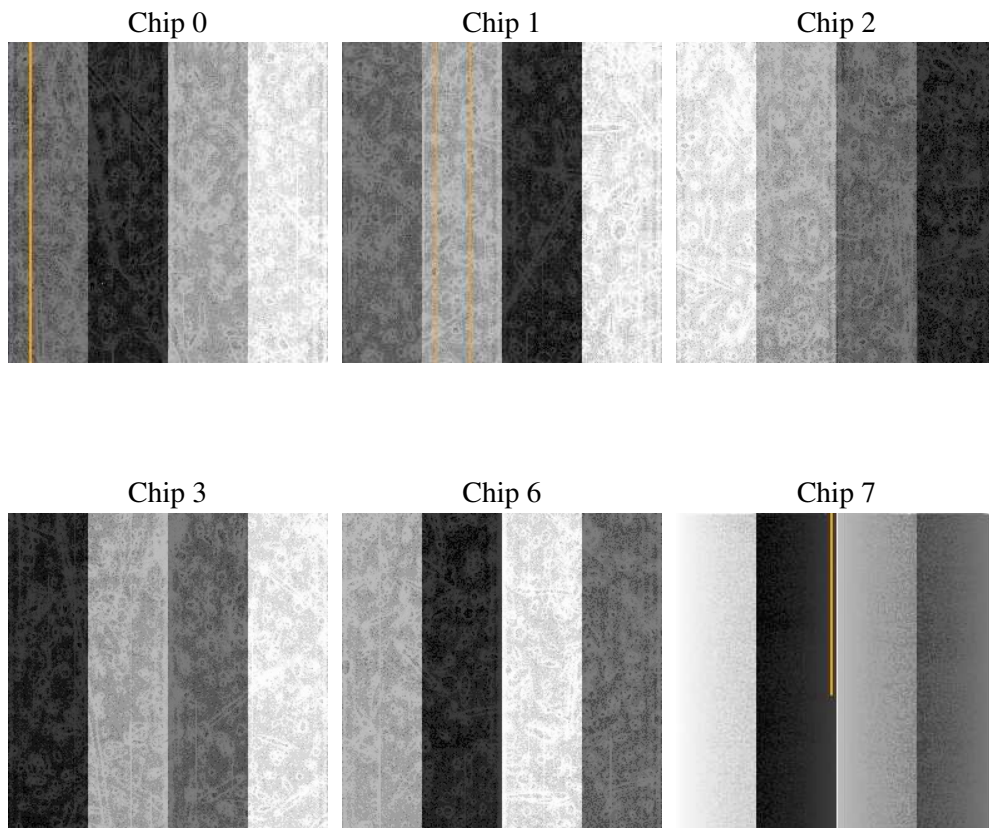
2 OBI

2.1 OBI

2.1.1 Images



2.1.2 Bias



2.1.3 Parameters

obi_num	0
ascdsver	7.6.7.2
caldbver	3.2.2
date	2006-05-20T16:38:57
revision	2

sched_exp_time	0.0
ontime	8462.2651728392
ontime0	6271.3667233884
ontime1	6355.631572336
ontime2	5979.6780114174
ontime3	6067.1845288873
ontime6	6546.8495064974
ontime7	8462.2651728392
l1events	1533627

2.1.4 Events

	ccd 0	ccd 1	ccd 2	ccd 3	ccd 6	ccd 7
level 1 events	235815	239526	228260	235032	260084	334910
rejected events	43477	43546	43370	46233	48785	63068
rejected %	18%	18%	19%	19%	18%	18%

	ccd 0	ccd 1	ccd 2	ccd 3	ccd 6	ccd 7
grade 0 events	106721	107859	104528	106906	115693	47058
	45%	45%	45%	45%	44%	14%
grade 1 events	609	538	636	664	580	145
	0%	0%	0%	0%	0%	0%
grade 2 events	33548	35399	31705	32401	36448	83296
	14%	14%	13%	13%	14%	24%
grade 3 events	12761	12698	12162	12484	13225	19531
	5%	5%	5%	5%	5%	5%
grade 4 events	12663	12578	12066	12451	13236	19312
	5%	5%	5%	5%	5%	5%
grade 5 events	2778	2799	2597	2918	3134	7463
	1%	1%	1%	1%	1%	2%
grade 6 events	28267	28881	26259	26008	34293	104896
	11%	12%	11%	11%	13%	31%
grade 7 events	38468	38774	38307	41200	43475	53209
	16%	16%	16%	17%	16%	15%

2.2 Compared Parameters

Parameter	Planned	Actual	Parameter	Planned	Actual
Instrument	ACIS	ACIS	Obspar format version number	6	6
Detector	ACIS-012367	ACIS-012367	Obspar file type	PREDICTED	ACTUAL
Grating	NONE	NONE	Obspar update status	NONE	UPDATED
Data mode	FAINT	FAINT	On-chip summing requested	N	N
Observation mode	SECONDARY	SECONDARY	Subarray requested	NONE	NONE
Pointing RA	0	223.9713819809144	Alternating exposures requested	N	N
Pointing Dec	0	1.501484421428118	Primary exposure time	0.000000	3.2
Pointing Roll	0.0	144.0641238869328			
SIM focus pos (mm)	-0.782348	-0.6828225247311905			
SIM defocus (mm)	0	0.8505141146731063			
SIM translation stage pos (mm)	-233.592463	250.466033080201			
SIM translation stage offset (mm)	0	-0.01005468664627074			
Observation start time	199259810.271594	199259809.24659			
Observation start date	2004-04-25T05:56:50	2004-04-25T05:56:49			
Observation end time	199272251.722142	199272250.69714			
Observation end date	2004-04-25T09:24:12	2004-04-25T09:24:10			
Read mode	TIMED	TIMED			

2.3 Aspect

2.4 Star Slots

2.5 FID Slots

A Summary

A.1 Status

V&V Scientist	Beth Sundheim
V&V Date (YYYY-MM-DD)	2006.05.21
V&V Edition	1
V&V Disposition and Status	OK
V&V Charge Time	8.39359996

A.2 Comments