

V&V Reference Report

L2 ASCDS Version : 8.4.5

Observation 60222 - L2 Version 3
Chandra X-Ray Center

L2 Processing Date : Dec 1 2012

Contents

1	Front	2
2	OBI	3
2.1	OBI	3
2.1.1	Images	3
2.1.2	Bias	3
2.1.3	Parameters	4
2.1.4	Events	4
2.2	Compared Parameters	5
2.3	Star Slots	6
2.4	FID Slots	6
A	Summary	7
A.1	Status	7
A.2	Comments	7

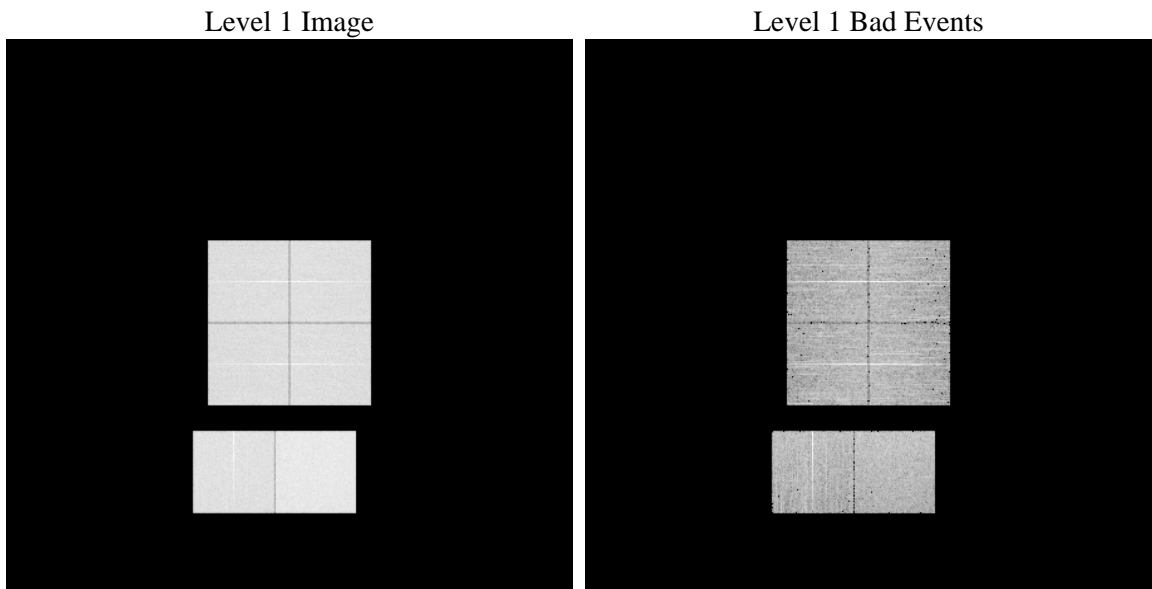
1 Front

seq_num	 	Sequence number
obs_id	60222	Observation id
title	ACIS-012367 diagnostics	Proposal title
observer	CHANDRA engineering request/realtime commanding	Principal investig
object	 	Source name
dtcycle	0	
cycle	P	events from which exps? Prim/Second/Both
ra_targ	0.0	Observer's specified target RA [deg]
dec_targ	0.0	Observer's specified target Dec [deg]
ra_nom	236.63327478728	Nominal RA [deg]
dec_nom	-33.094168391603	Nominal Dec [deg]
roll_nom	339.08540566989	Nominal Roll [deg]
revision	3	Processing version of data
ontime	8278.3999691606	Sum of GTIs [s]
livetime	8173.573884097	Livetime [s]
ontime0	6181.4919370711	Sum of GTIs [s]
ontime1	6251.1546753049	Sum of GTIs [s]
ontime2	5865.5197931528	Sum of GTIs [s]
ontime3	6012.9600283504	Sum of GTIs [s]
ontime6	6513.7554981709	Sum of GTIs [s]
ontime7	8278.3999691606	Sum of GTIs [s]
l2events	1169502	Number of level 2 events

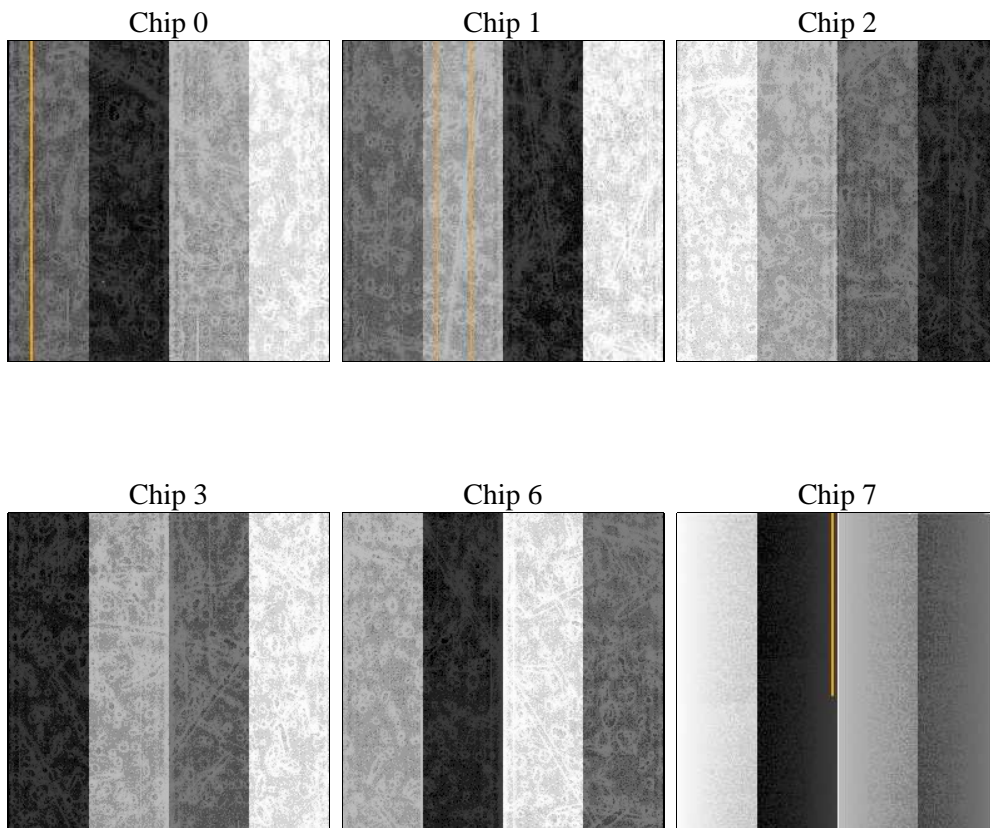
2 OBI

2.1 OBI

2.1.1 Images



2.1.2 Bias



2.1.3 Parameters

obi_num	0	Obi number	sched_exp_time	0.0	[s] Scheduled observation exposure time
ascdsver	8.4.5	Processing system revision	ontime	8278.3999691606	Sum of GTIs [s]
caldbver	4.5.2	 	ontime0	6181.4919370711	Sum of GTIs [s]
date	2012-12-01T20:44:54	Date and time of file creation	ontime1	6251.1546753049	Sum of GTIs [s]
revision	3	Processing version of data	ontime2	5865.5197931528	Sum of GTIs [s]
			ontime3	6012.9600283504	Sum of GTIs [s]
			ontime6	6513.7554981709	Sum of GTIs [s]
			ontime7	8278.3999691606	Sum of GTIs [s]
			l1events	1500551	Number of level 1 events

2.1.4 Events

	ccd 0	ccd 1	ccd 2	ccd 3	ccd 6	ccd 7		ccd 0	ccd 1	ccd 2	ccd 3	ccd 6	ccd 7
level 1 events	230611	234313	223825	230094	256182	325526	grade 0 events	103261	103803	100841	103590	113095	67090
rejected events	42969	44143	44045	44915	47991	49828		44%	44%	45%	45%	44%	20%
rejected %	18%	18%	19%	19%	18%	15%	grade 1 events	650	525	643	632	582	186
								0%	0%	0%	0%	0%	0%
							grade 2 events	32825	34085	30000	31661	35851	60273
								14%	14%	13%	13%	13%	18%
							grade 3 events	12286	12119	11862	12010	12979	27479
								5%	5%	5%	5%	5%	8%
							grade 4 events	12106	11957	11677	12333	12828	27021
								5%	5%	5%	5%	5%	8%
							grade 5 events	2679	2915	2653	2953	3113	8973
								1%	1%	1%	1%	1%	2%
							grade 6 events	27164	28206	25400	25585	33438	93835
								11%	12%	11%	11%	13%	28%
							grade 7 events	39640	40703	40749	41330	44296	40669
								17%	17%	18%	17%	17%	12%

2.2 Compared Parameters

Parameter	Planned	Actual	Parameter	Planned	Actual
Instrument	ACIS	ACIS	Obspar format version number	7	7
Detector	ACIS-012367	ACIS-012367	Obspar file type	PREDICTED	ACTUAL
Grating	NONE	NONE	Obspar update status	NONE	UPDATED
Data mode	FAINT	FAINT	On-chip summing requested	N	N
Observation mode	SECONDARY	SECONDARY	Subarray requested	NONE	NONE
[deg] Pointing RA	0	236.6332747872752	Alternating exposures requested	N	N
[deg] Pointing Dec	0	-33.09416839160284	[s] Primary exposure time	0.000000	3.2
[deg] Pointing Roll	0.0	339.0854056698905			
[mm] SIM focus pos	-0.782348	-0.7809083437167272			
[mm] SIM defocus	0	0.7524282956875696			
[mm] SIM translation stage pos	-233.592463	250.466033080201			
[mm] SIM translation stage offset	0	-0.01005468664627074			
[s] Observation start time (MET)	201763545.082093	201763544.05707			
Observation start date	2004-05-24T05:25:45	2004-05-24T05:25:44			
[s] Observation end time (MET)	201787013.483132	201787012.4581			
Observation end date	2004-05-24T11:56:53	2004-05-24T11:56:52			
Read mode	TIMED	TIMED			

2.3 Star Slots

2.4 FID Slots

A Summary

A.1 Status

V&V Scientist	Jen Lauer
V&V Date (YYYY-MM-DD)	2012.12.17
V&V Edition	1
V&V Disposition and Status	OK
V&V Charge Time	8.2783999691606

A.2 Comments