

# V&V Reference Report

## L2 ASCDS Version : 7.6.7.2

Observation 60222 - L2 Version 001  
Chandra X-Ray Center

L2 Processing Date : May 17 2006

## Contents

<b>1</b>	<b>Front</b>	<b>2</b>
<b>2</b>	<b>OBI</b>	<b>3</b>
2.1	OBI . . . . .	3
2.1.1	Images . . . . .	3
2.1.2	Bias . . . . .	3
2.1.3	Parameters . . . . .	4
2.1.4	Events . . . . .	4
2.2	Compared Parameters . . . . .	5
2.3	Aspect . . . . .	6
2.4	Star Slots . . . . .	8
2.5	FID Slots . . . . .	8
<b>A</b>	<b>Summary</b>	<b>9</b>
A.1	Status . . . . .	9
A.2	Comments . . . . .	9

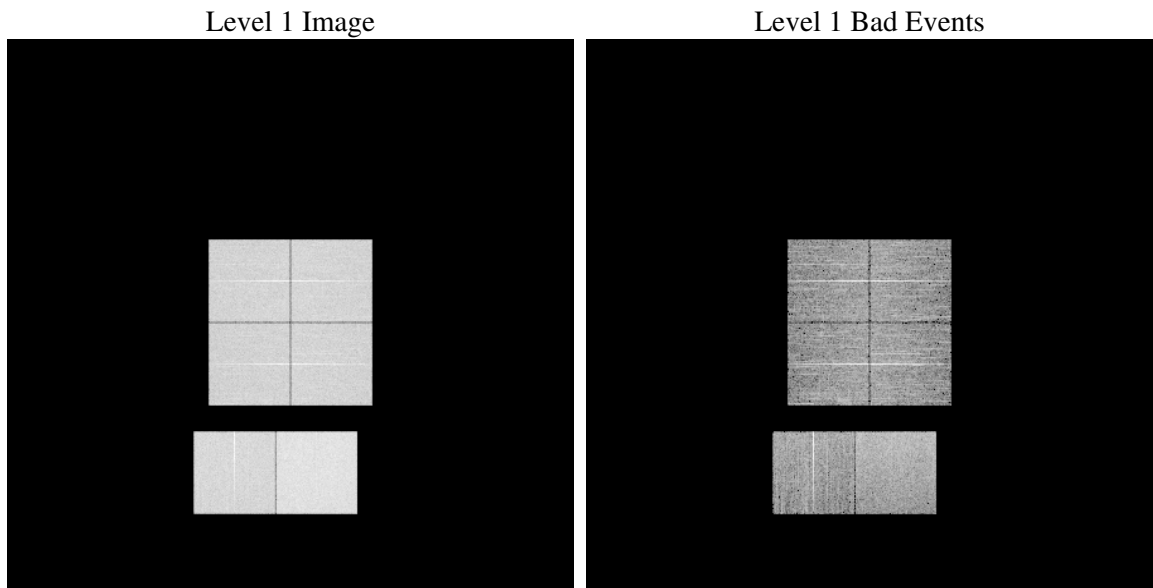
# 1 Front

seq_num	&#160
obs_id	60222
title	ACIS-012367 diagnostics
observer	CHANDRA engineering request/realtime commanding
object	&#160
dtcycle	0
cycle	P
ra_targ	0.0
dec_targ	0.0
ra_nom	236.63324382914
dec_nom	-33.094158445115
roll_nom	339.0853887587
revision	2
ontime	8278.320859611
livetime	8173.4957762803
ontime0	6181.4538675249
ontime1	6249.5546753109
ontime2	5863.9197931588
ontime3	6012.8398787975
ontime6	6512.1554981768
ontime7	8278.320859611
l2events	1158030

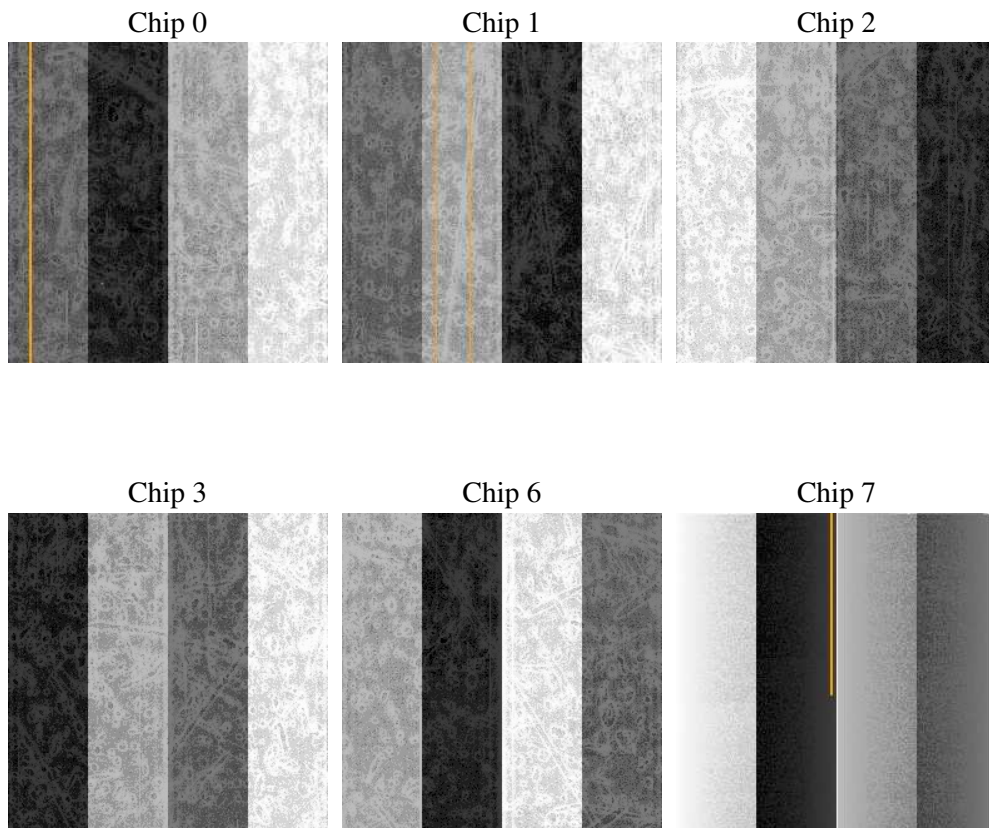
## 2 OBI

### 2.1 OBI

#### 2.1.1 Images



#### 2.1.2 Bias



### 2.1.3 Parameters

obi_num	0
ascdsver	7.6.7.2
caldbver	3.2.2
date	2006-05-17T12:43:20
revision	2

sched_exp_time	0.0
ontime	8280.7645254731
ontime0	6183.8564933836
ontime1	6251.9162611663
ontime2	5866.240339011
ontime3	6015.3245846629
ontime6	6514.4350040555
ontime7	8280.7645254731
l1events	1500551

### 2.1.4 Events

	ccd 0	ccd 1	ccd 2	ccd 3	ccd 6	ccd 7
level 1 events	230611	234313	223825	230094	256182	325526
rejected events	43068	44250	44134	45013	48109	61015
rejected %	18%	18%	19%	19%	18%	18%

	ccd 0	ccd 1	ccd 2	ccd 3	ccd 6	ccd 7
grade 0 events	103261	103803	100840	103590	113096	45425
	44%	44%	45%	45%	44%	13%
grade 1 events	650	525	643	633	582	117
	0%	0%	0%	0%	0%	0%
grade 2 events	32825	34085	30001	31661	35850	80332
	14%	14%	13%	13%	13%	24%
grade 3 events	12285	12119	11862	12010	12979	18841
	5%	5%	5%	5%	5%	5%
grade 4 events	12107	11956	11677	12333	12828	18352
	5%	5%	5%	5%	5%	5%
grade 5 events	2680	2915	2653	2952	3113	7252
	1%	1%	1%	1%	1%	2%
grade 6 events	27163	28207	25400	25585	33438	101661
	11%	12%	11%	11%	13%	31%
grade 7 events	39640	40703	40749	41330	44296	53546
	17%	17%	18%	17%	17%	16%

## 2.2 Compared Parameters

Parameter	Planned	Actual	Parameter	Planned	Actual
Instrument	ACIS	ACIS	Obspar format version number	6	6
Detector	ACIS-012367	ACIS-012367	Obspar file type	PREDICTED	ACTUAL
Grating	NONE	NONE	Obspar update status	NONE	UPDATED
Data mode	FAINT	FAINT	On-chip summing requested	N	N
Observation mode	SECONDARY	SECONDARY	Subarray requested	NONE	NONE
Pointing RA	0	236.633243829145	Alternating exposures requested	N	N
Pointing Dec	0	-33.09415844511461	Primary exposure time	0.000000	3.2
Pointing Roll	0.0	339.0853887586975			
SIM focus pos (mm)	-0.782348	-0.7809083437167272			
SIM defocus (mm)	0	0.7524282956875696			
SIM translation stage pos (mm)	-233.592463	250.466033080201			
SIM translation stage offset (mm)	0	-0.01005468664627074			
Observation start time	201763545.082093	201763544.05707			
Observation start date	2004-05-24T05:25:45	2004-05-24T05:25:44			
Observation end time	201787013.483132	201787012.4581			
Observation end date	2004-05-24T11:56:53	2004-05-24T11:56:52			
Read mode	TIMED	TIMED			

## 2.3 Aspect



## **2.4 Star Slots**

## **2.5 FID Slots**



## A Summary

### A.1 Status

V&V Scientist	Beth Sundheim
V&V Date (YYYY-MM-DD)	2006.05.17
V&V Edition	1
V&V Disposition and Status	OK
V&V Charge Time	8.27832085

### A.2 Comments