

# V&V Reference Report

## L2 ASCDS Version : 7.6.7.2

Observation 60212 - L2 Version 001  
Chandra X-Ray Center

L2 Processing Date : May 15 2006

## Contents

<b>1</b>	<b>Front</b>	<b>2</b>
<b>2</b>	<b>OBI</b>	<b>3</b>
2.1	OBI . . . . .	3
2.1.1	Images . . . . .	3
2.1.2	Bias . . . . .	3
2.1.3	Parameters . . . . .	4
2.1.4	Events . . . . .	4
2.2	Compared Parameters . . . . .	5
2.3	Aspect . . . . .	6
2.4	Star Slots . . . . .	8
2.5	FID Slots . . . . .	8
<b>A</b>	<b>Summary</b>	<b>9</b>
A.1	Status . . . . .	9
A.2	Comments . . . . .	9

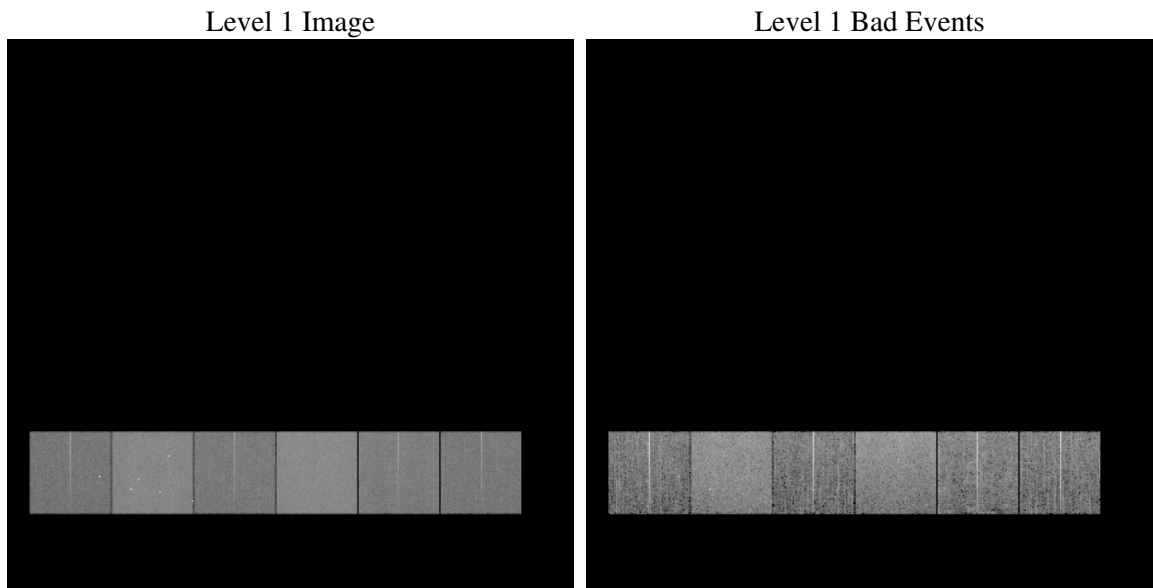
# 1 Front

seq_num	&#160
obs_id	60212
title	ACIS-456789 diagnostics
observer	CHANDRA engineering request/realtime commanding
object	&#160
dtcycle	0
cycle	P
ra_targ	0.0
dec_targ	0.0
ra_nom	290.98565198719
dec_nom	-35.473895099952
roll_nom	81.184769941632
revision	2
ontime	8175.999969542
livetime	8072.4705349315
ontime4	5161.8907999992
ontime5	8175.999969542
ontime6	5595.7922503948
ontime7	8175.999969542
ontime8	5790.3334249854
ontime9	5440.1029042602
l2events	1117149

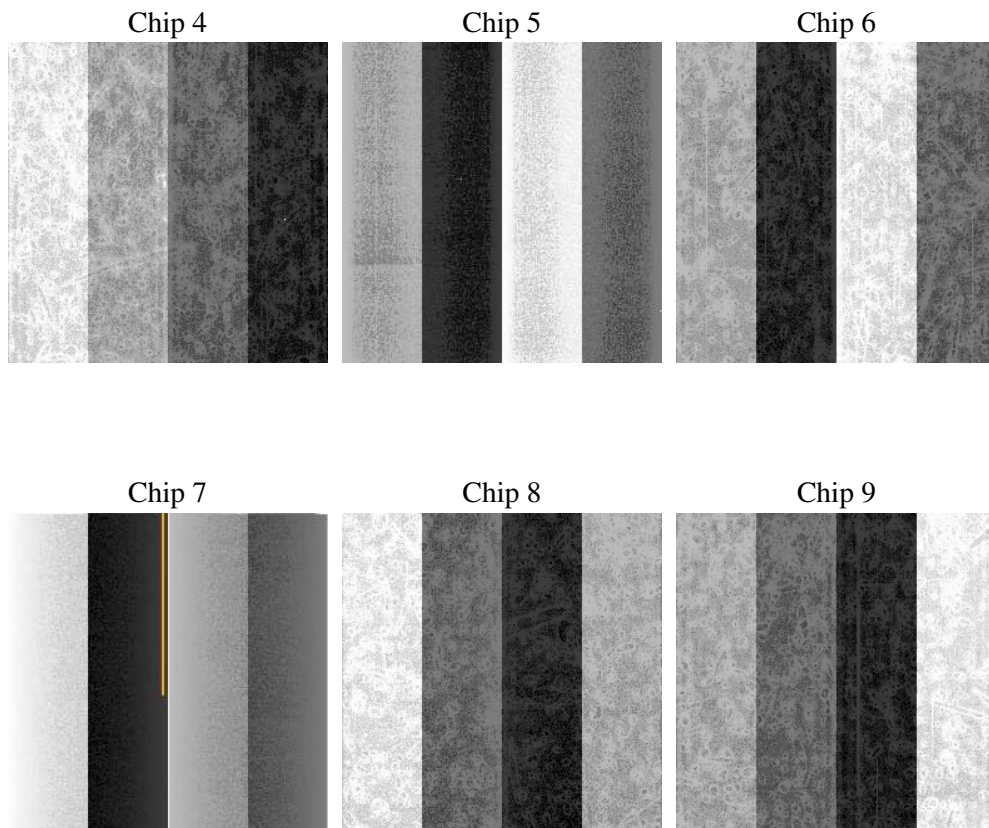
## 2 OBI

### 2.1 OBI

#### 2.1.1 Images



#### 2.1.2 Bias



### 2.1.3 Parameters

obi_num	0
ascdsver	7.6.7.2
caldbver	3.2.2
date	2006-05-15T07:55:24
revision	2

sched_exp_time	0.0
ontime	8280.7699956298
ontime4	5211.5640521348
ontime5	8280.7699956298
ontime6	5658.8196750283
ontime7	8280.7699956298
ontime8	5863.0017702878
ontime9	5496.7713888288
l1events	1499393

### 2.1.4 Events

	ccd 4	ccd 5	ccd 6	ccd 7	ccd 8	ccd 9
level 1 events	197060	307977	221024	324156	238276	210900
rejected events	43328	68016	43633	63241	50308	45119
rejected %	21%	22%	19%	19%	21%	21%

	ccd 4	ccd 5	ccd 6	ccd 7	ccd 8	ccd 9
grade 0 events	90133	29552	97585	46493	103207	92343
	45%	9%	44%	14%	43%	43%
grade 1 events	708	143	541	121	612	578
	0%	0%	0%	0%	0%	0%
grade 2 events	24719	113248	30948	79462	33407	28792
	12%	36%	14%	24%	14%	13%
grade 3 events	10400	7684	11012	19138	12321	10645
	5%	2%	4%	5%	5%	5%
grade 4 events	10385	7641	11406	18942	12529	10593
	5%	2%	5%	5%	5%	5%
grade 5 events	2532	6801	2759	7228	3427	2955
	1%	2%	1%	2%	1%	1%
grade 6 events	19491	84885	28419	100201	28905	25066
	9%	27%	12%	30%	12%	11%
grade 7 events	38692	58023	38354	52571	43868	39928
	19%	18%	17%	16%	18%	18%

## 2.2 Compared Parameters

Parameter	Planned	Actual	Parameter	Planned	Actual
Instrument	ACIS	ACIS	Obspar format version number	6	6
Detector	ACIS-456789	ACIS-456789	Obspar file type	PREDICTED	ACTUAL
Grating	NONE	NONE	Obspar update status	NONE	UPDATED
Data mode	FAINT	FAINT	On-chip summing requested	N	N
Observation mode	SECONDARY	SECONDARY	Subarray requested	NONE	NONE
Pointing RA	0	290.9856519871901	Alternating exposures requested	N	N
Pointing Dec	0	-35.47389509995211	Primary exposure time	0.000000	3.2
Pointing Roll	0.0	81.18476994163152			
SIM focus pos (mm)	-0.684267	-0.7809083437167272			
SIM defocus (mm)	0	0.7524282956875696			
SIM translation stage pos (mm)	-190.132523	250.4635187648994			
SIM translation stage offset (mm)	0	-0.007540371344731511			
Observation start time	202450776.862381	202450775.83741			
Observation start date	2004-06-01T04:19:37	2004-06-01T04:19:35			
Observation end time	202472086.613321	202472085.58835			
Observation end date	2004-06-01T10:14:47	2004-06-01T10:14:45			
Read mode	TIMED	TIMED			

## 2.3 Aspect



## **2.4 Star Slots**

## **2.5 FID Slots**



## A Summary

### A.1 Status

V&V Scientist	Jen Lauer
V&V Date (YYYY-MM-DD)	2006.05.15
V&V Edition	1
V&V Disposition and Status	OK
V&V Charge Time	8.17599996

### A.2 Comments