

V&V Reference Report

L2 ASCDS Version : 7.6.11

Observation 602 - L2 Version 3
Chandra X-Ray Center

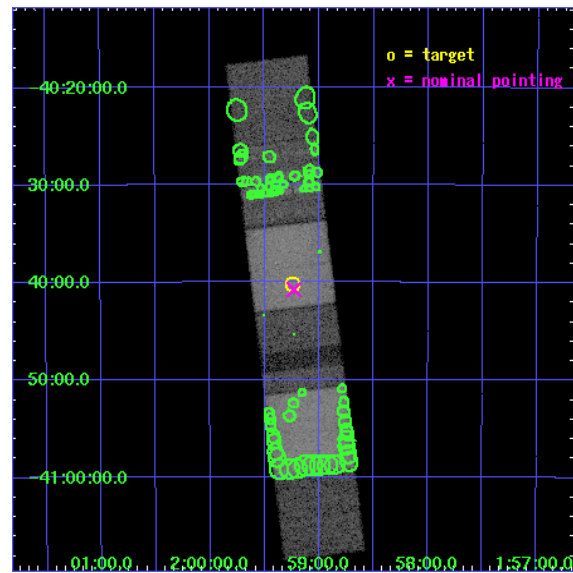
L2 Processing Date : Jul 14 2007

Contents

1	Front	2
2	OBI	3
2.1	OBI	3
2.1.1	Images	3
2.1.2	Bias	3
2.1.3	Parameters	4
2.1.4	Events	4
2.2	Compared Parameters	5
2.3	Aspect	6
2.4	Star Slots	9
2.4.1	Slot 3	9
2.4.2	Slot 4	10
2.4.3	Slot 5	11
2.4.4	Slot 6	12
2.4.5	Slot 7	13
2.5	FID Slots	14
2.5.1	Slot 0	14
2.5.2	Slot 1	15
2.5.3	Slot 2	16
3	Point Sources	17
A	Summary	18
A.1	Status	18
A.2	Comments	18

1 Front

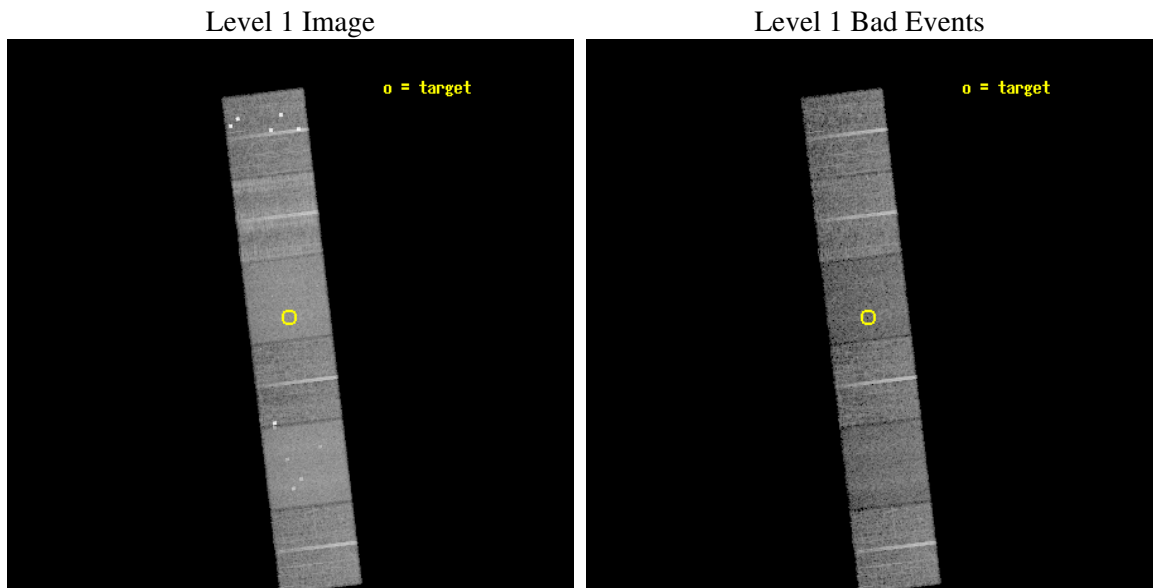
seq_num	500088
obs_id	602
title	X-RAY POSITIONS AND AFTERGLOWS OF GAMMA-RAY BURSTS
observer	Dr Luigi Piro
object	GRB000210
dtcycle	0
cycle	P
ra_targ	29.8117
dec_targ	-40.6694
ra_nom	29.807627695297
dec_nom	-40.679075943779
roll_nom	263.15392052643
revision	3
ontime	9043.2000084221
livetime	8928.6895647542
ontime4	9043.2000084221
ontime5	9043.2000084221
ontime6	9043.2000084221
ontime7	9043.2000084221
ontime8	9043.2000084221
ontime9	9043.2000084221
l2events	198081



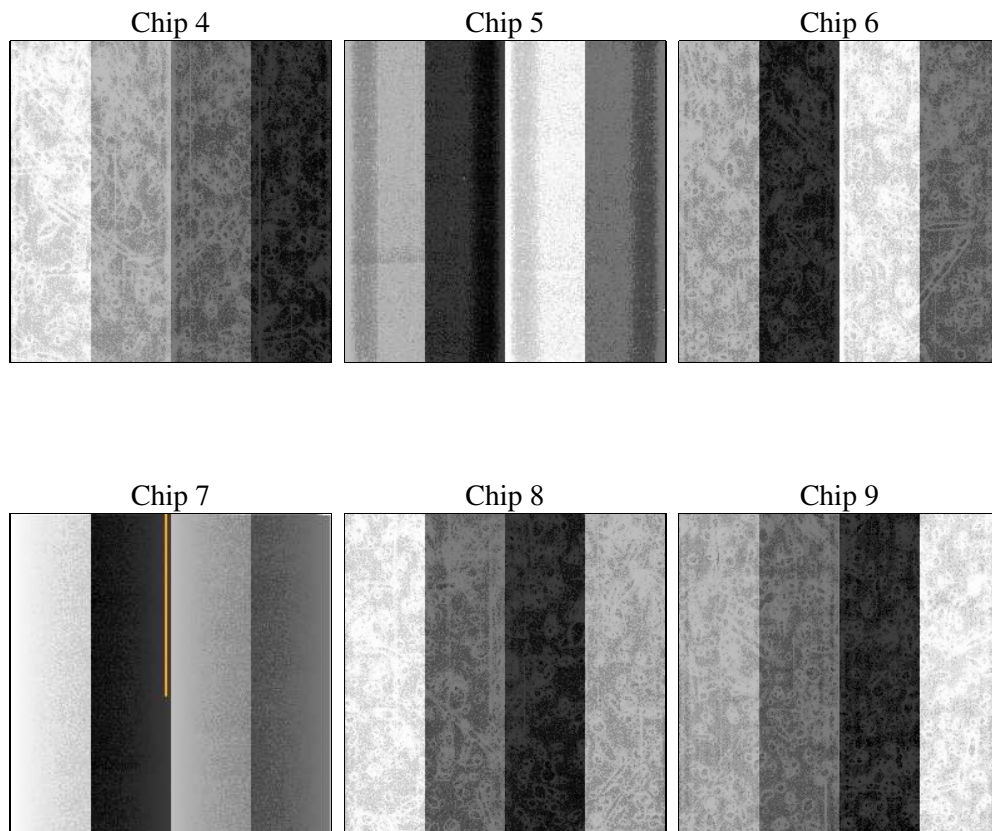
2 OBI

2.1 OBI

2.1.1 Images



2.1.2 Bias



2.1.3 Parameters

obi_num	0
ascdsver	7.6.11
caldsver	3.4.0
date	2007-07-14T16:30:42
revision	3

sched_exp_time	10000.000000
ontime	9043.2000084221
ontime4	9043.2000084221
ontime5	9043.2000084221
ontime6	9043.2000084221
ontime7	9043.2000084221
ontime8	9043.2000084221
ontime9	9043.2000084221
l1events	640725

2.1.4 Events

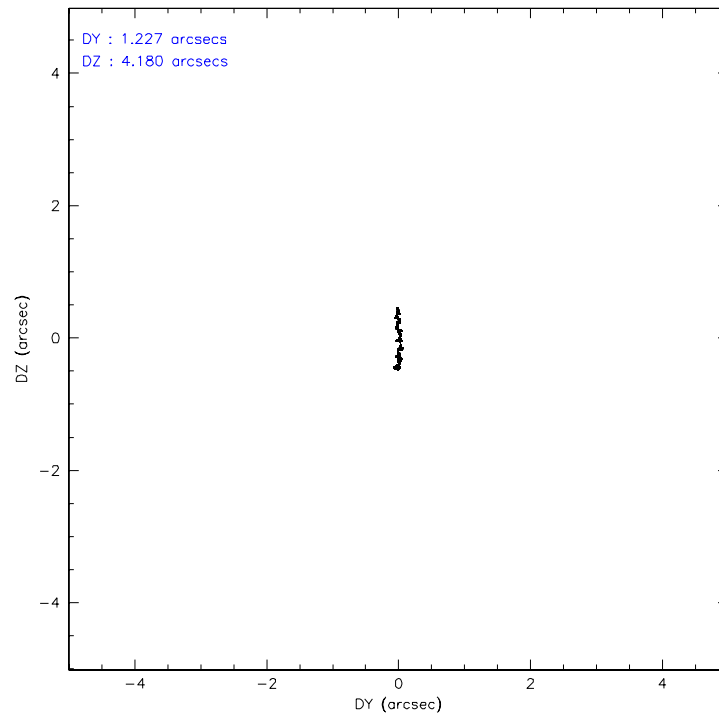
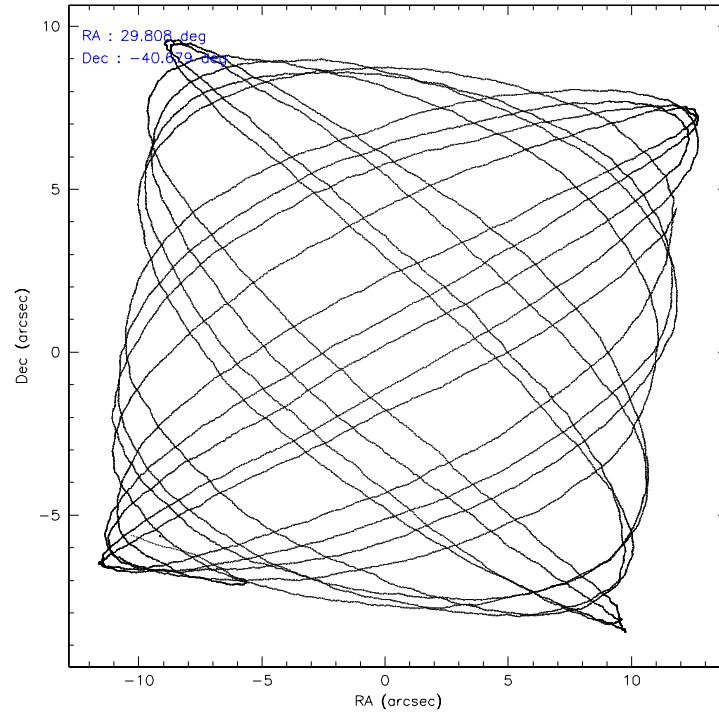
	ccd 4	ccd 5	ccd 6	ccd 7	ccd 8	ccd 9
level 1 events	96919	119833	90255	110141	125246	98331
rejected events	78118	52928	69936	48431	76215	65939
rejected %	80%	44%	77%	43%	60%	67%

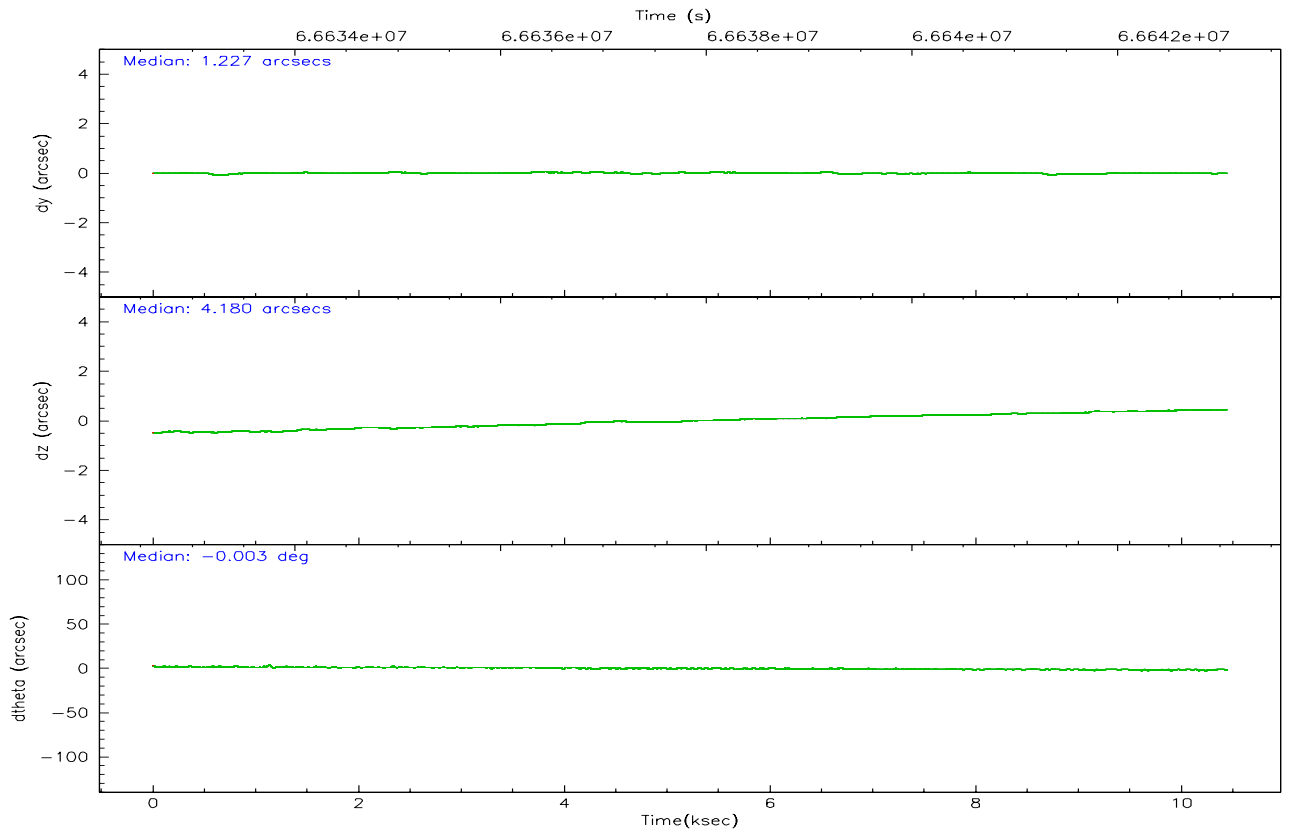
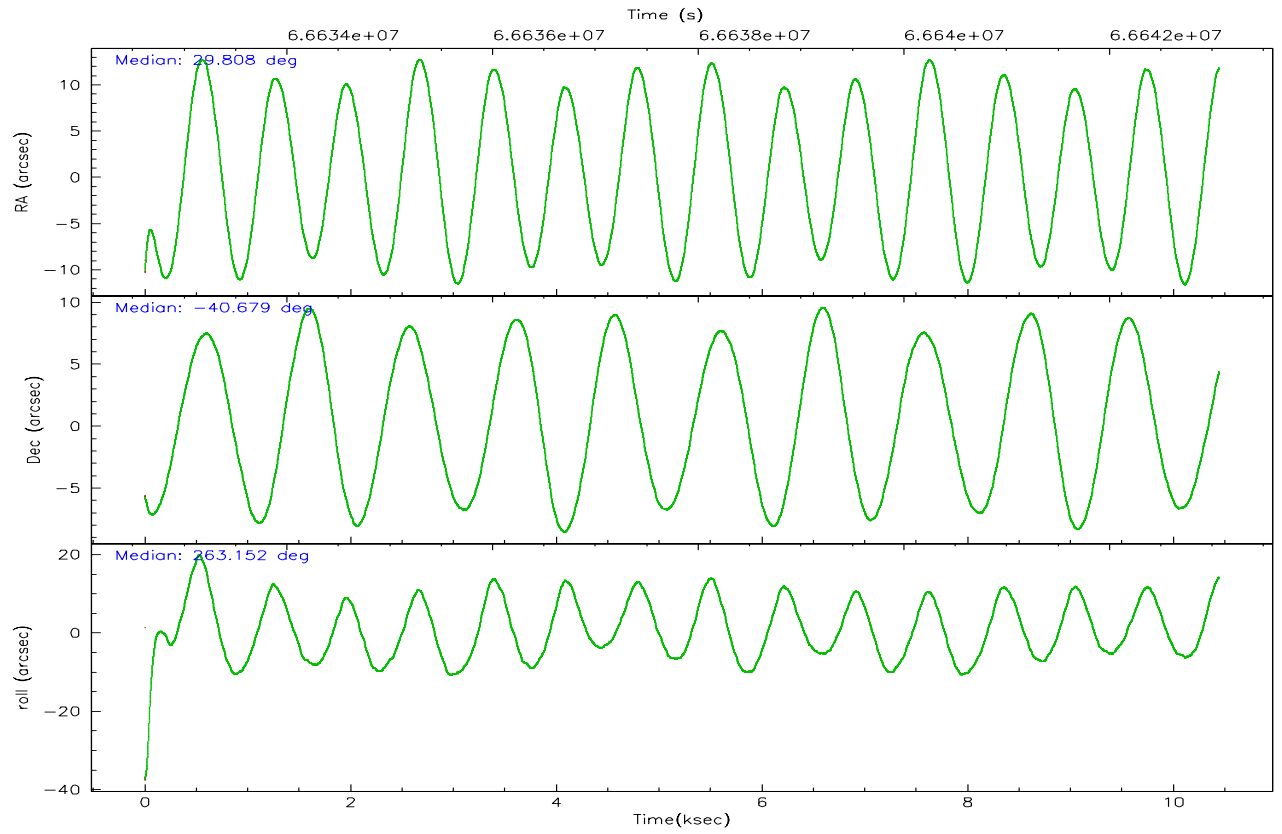
	ccd 4	ccd 5	ccd 6	ccd 7	ccd 8	ccd 9
grade 0 events	7868	10405	7966	7561	20767	21289
	8%	8%	8%	6%	16%	21%
grade 1 events	61	252	72	118	167	180
	0%	0%	0%	0%	0%	0%
grade 2 events	5922	18708	7381	12285	8073	5885
	6%	15%	8%	11%	6%	5%
grade 3 events	912	3971	1003	5569	6901	1035
	0%	3%	1%	5%	5%	1%
grade 4 events	933	3860	985	5495	6311	1080
	0%	3%	1%	4%	5%	1%
grade 5 events	2255	7669	2652	8175	3399	2729
	2%	6%	2%	7%	2%	2%
grade 6 events	3182	30059	2998	30870	6996	3118
	3%	25%	3%	28%	5%	3%
grade 7 events	75786	44909	67198	40068	72632	63015
	78%	37%	74%	36%	57%	64%

2.2 Compared Parameters

Parameter	Planned	Actual	Parameter	Planned	Actual
Instrument	ACIS	ACIS	Obspar format version number	6	6
Detector	ACIS-456789	ACIS-456789	Obspar file type	PREDICTED	ACTUAL
Grating	NONE	NONE	Obspar update status	NONE	UPDATED
Data mode	FAINT	FAINT	Number of optional ACIS chips dropped	0	0
Observation mode	POINTING	POINTING	On-chip summing requested	N	N
Pointing RA	29.793419	29.80762769529742	Subarray requested	NONE	NONE
Pointing Dec	-40.653761	-40.67907594377918	Alternating exposures requested	N	N
Pointing Roll	262.988088	263.1539205264327	Primary exposure time	0.000000	3.2
SIM focus pos (mm)	-0.684267	-0.6828225247311905			
SIM defocus (mm)	0	0.001444936568705701			
SIM translation stage pos (mm)	-190.132523	-190.1400660498719			
SIM translation stage offset (mm)	0	0.00754346686406393			
Observation start time	66633065.184000	66631598.564771			
Observation start date	2000-02-11T05:10:01	2000-02-11T04:46:38			
Observation end time	66643065.184000	66644082.552726			
Observation end date	2000-02-11T07:56:41	2000-02-11T08:14:42			
Read mode	TIMED	TIMED			

2.3 Aspect



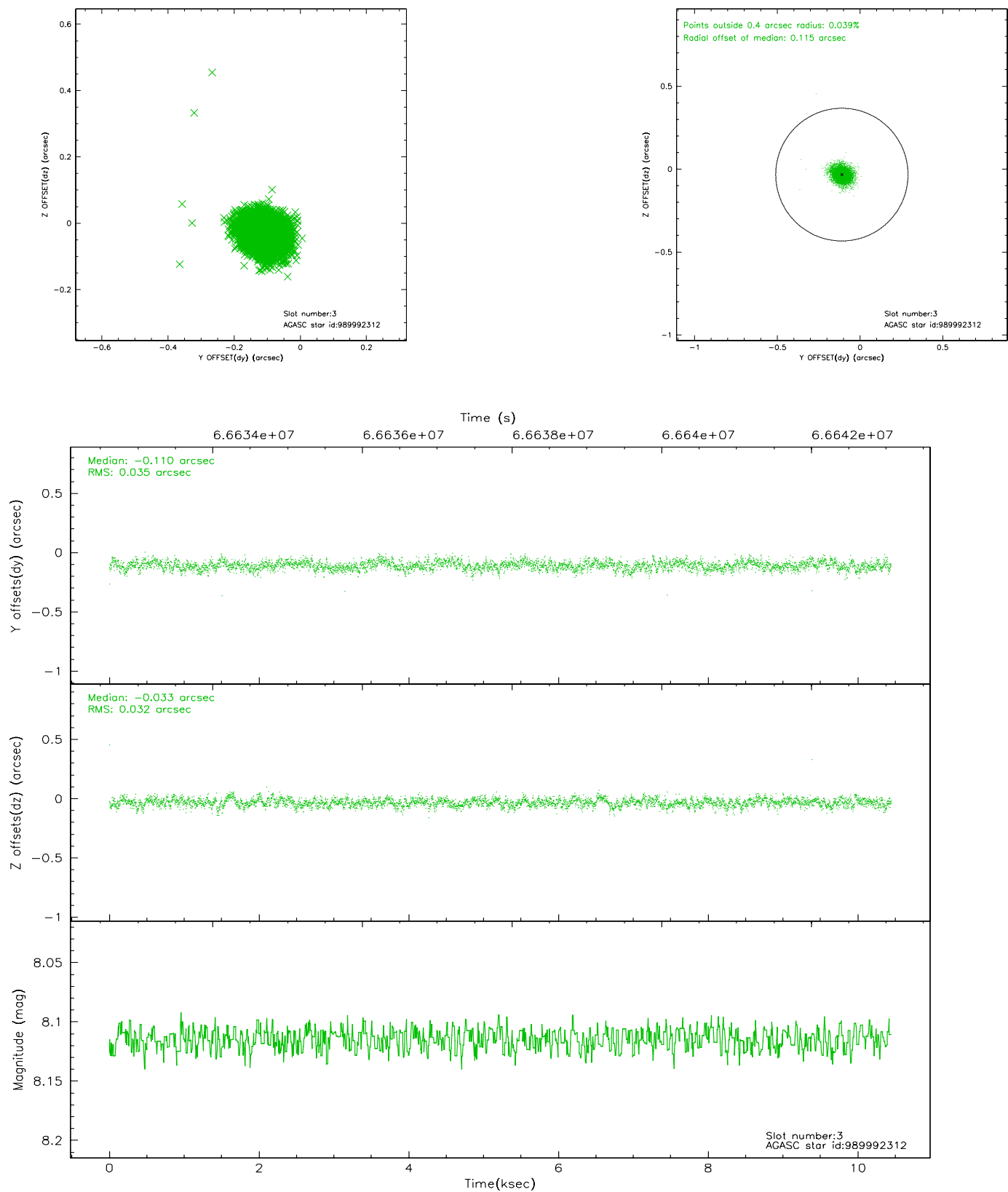


Slot Statistics

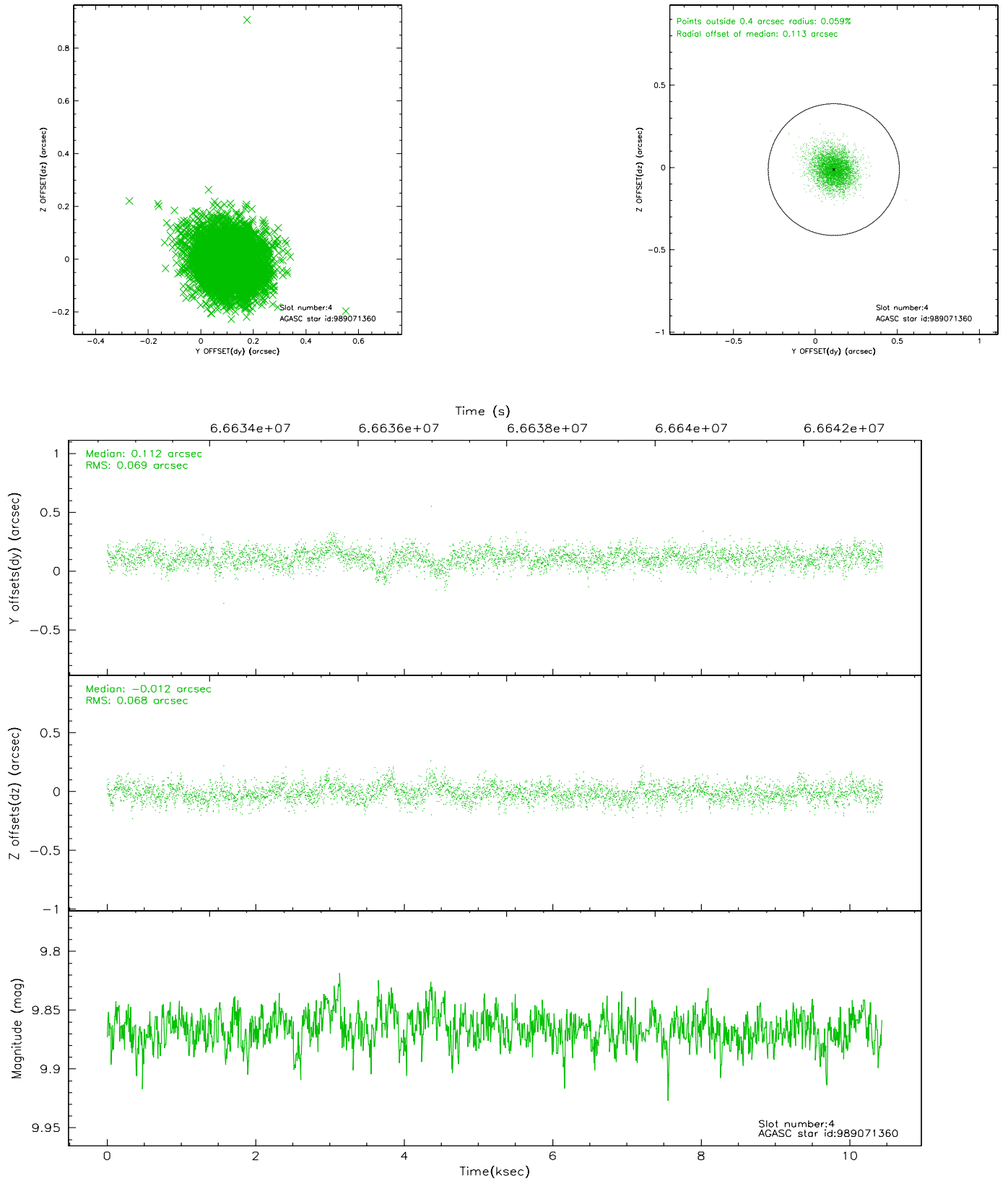
slot	status	id	mag	n_pts	med_dy	med_dz	dr1	dr2	ra	dec	mean_y	mean_z
0	FID	ACIS-S-2	7.11	2548	-0.003	0.013	0.010	0.015	0.000000	0.000000	-753.86	-1725.23
1	FID	ACIS-S-4	7.21	2548	-0.041	-0.002	0.006	0.010	0.000000	0.000000	2159.19	182.67
2	FID	ACIS-S-5	7.23	2547	0.013	-0.002	0.009	0.015	0.000000	0.000000	-1806.00	176.98
3	GUIDE	989992312	8.11	5094	-0.110	-0.033	0.050	0.081	30.141289	-40.267805	-1494.15	779.18
4	GUIDE	989071360	9.87	5043	0.112	-0.012	0.101	0.167	29.563405	-41.043894	1470.69	-447.91
5	GUIDE	989073312	10.41	5083	-0.058	-0.029	0.133	0.217	28.922971	-40.750048	645.66	-2312.27
6	GUIDE	989069480	10.05	5086	0.092	0.088	0.110	0.183	29.788207	-40.436709	-773.75	-109.74
7	GUIDE	989991576	7.44	5094	-0.038	-0.015	0.056	0.089	30.133855	-40.731246	164.91	956.28

2.4 Star Slots

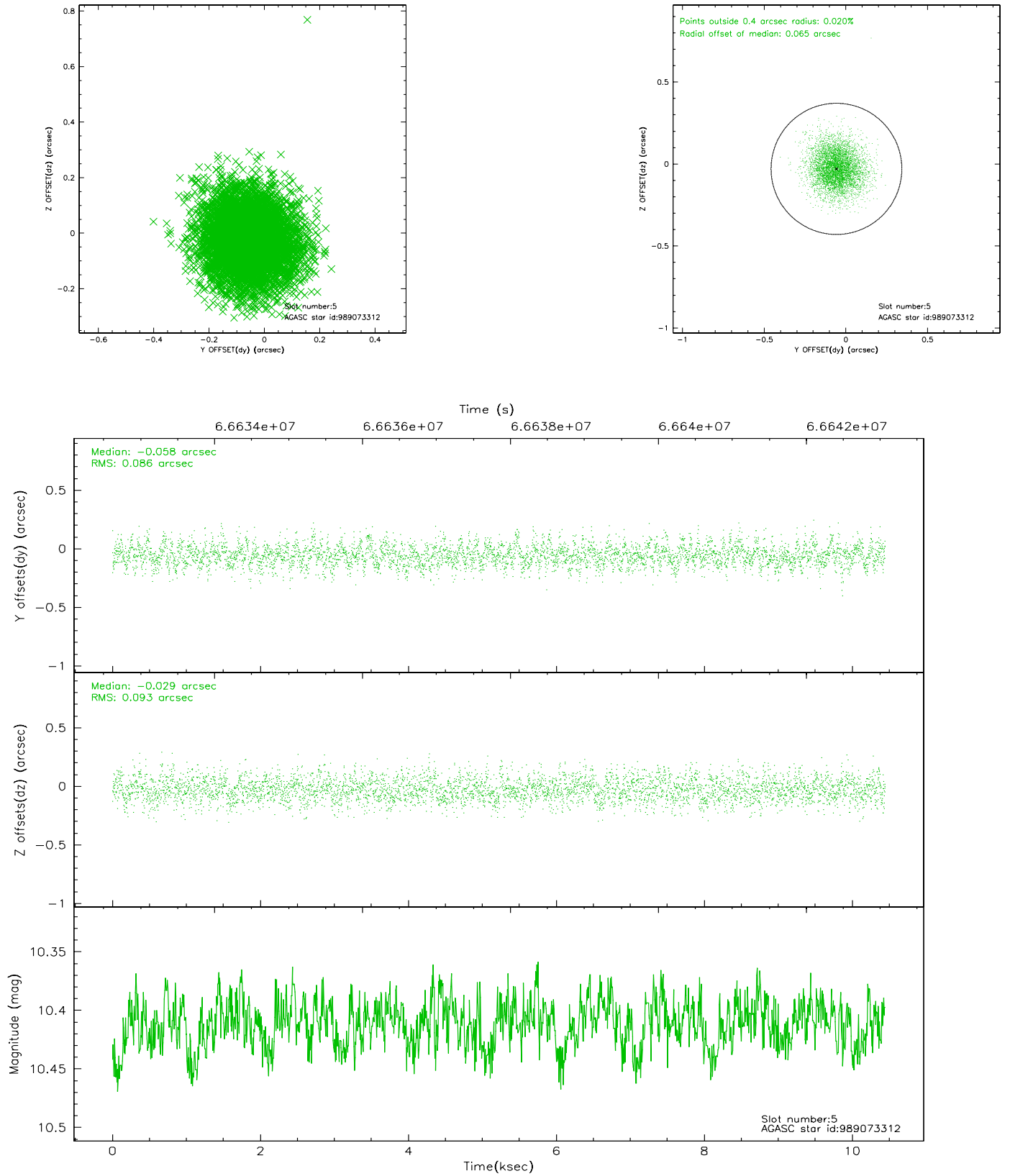
2.4.1 Slot 3



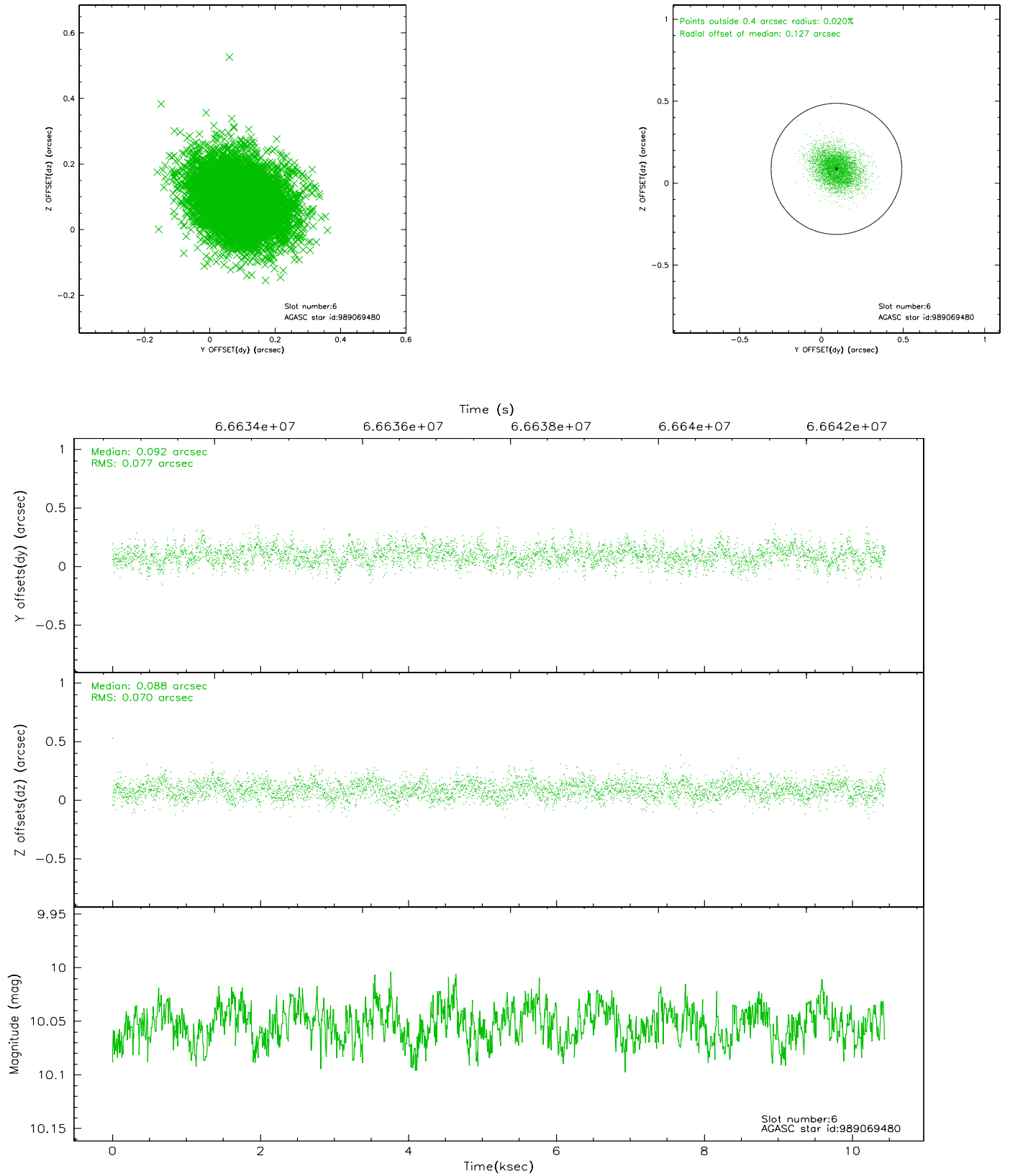
2.4.2 Slot 4



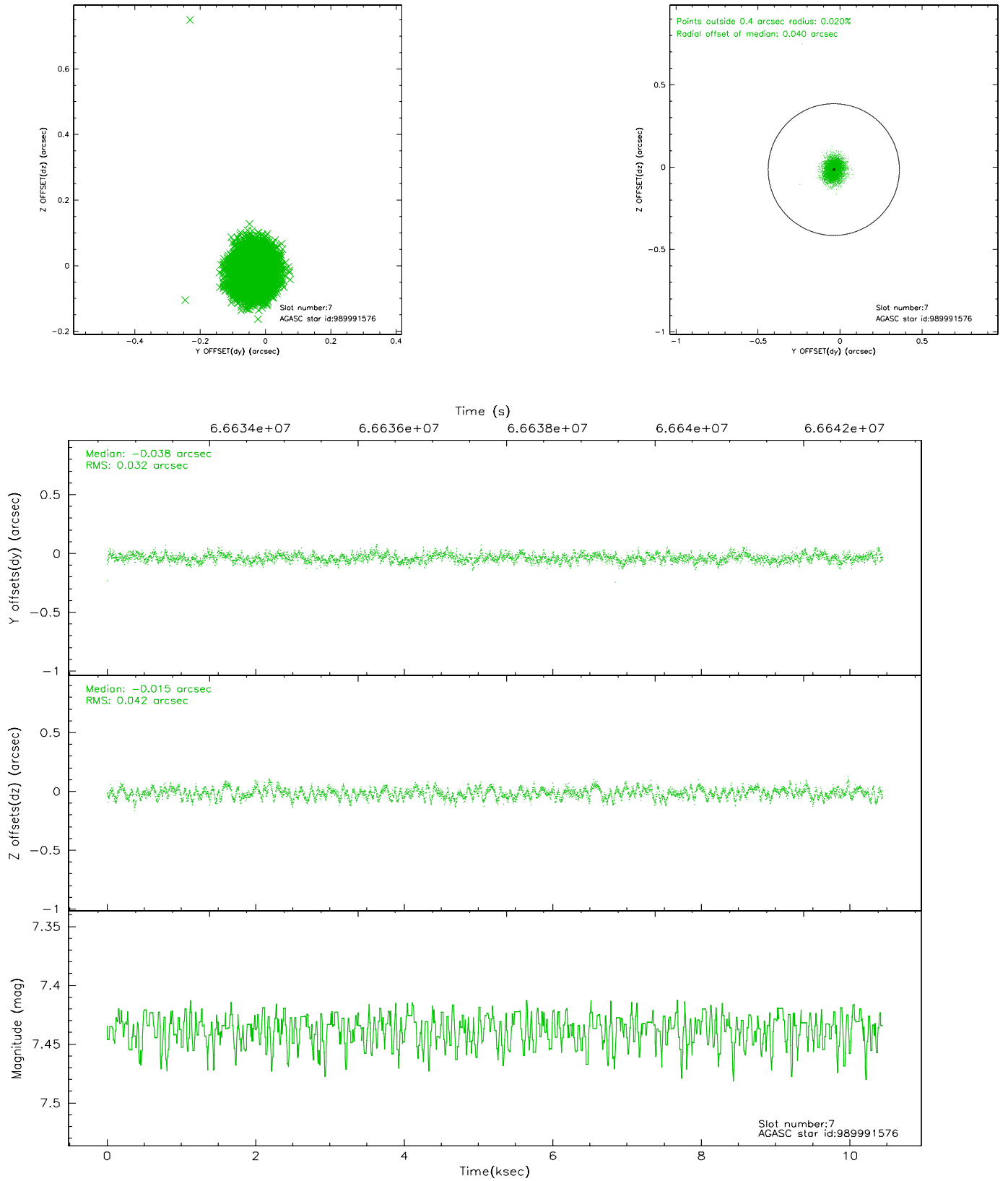
2.4.3 Slot 5



2.4.4 Slot 6

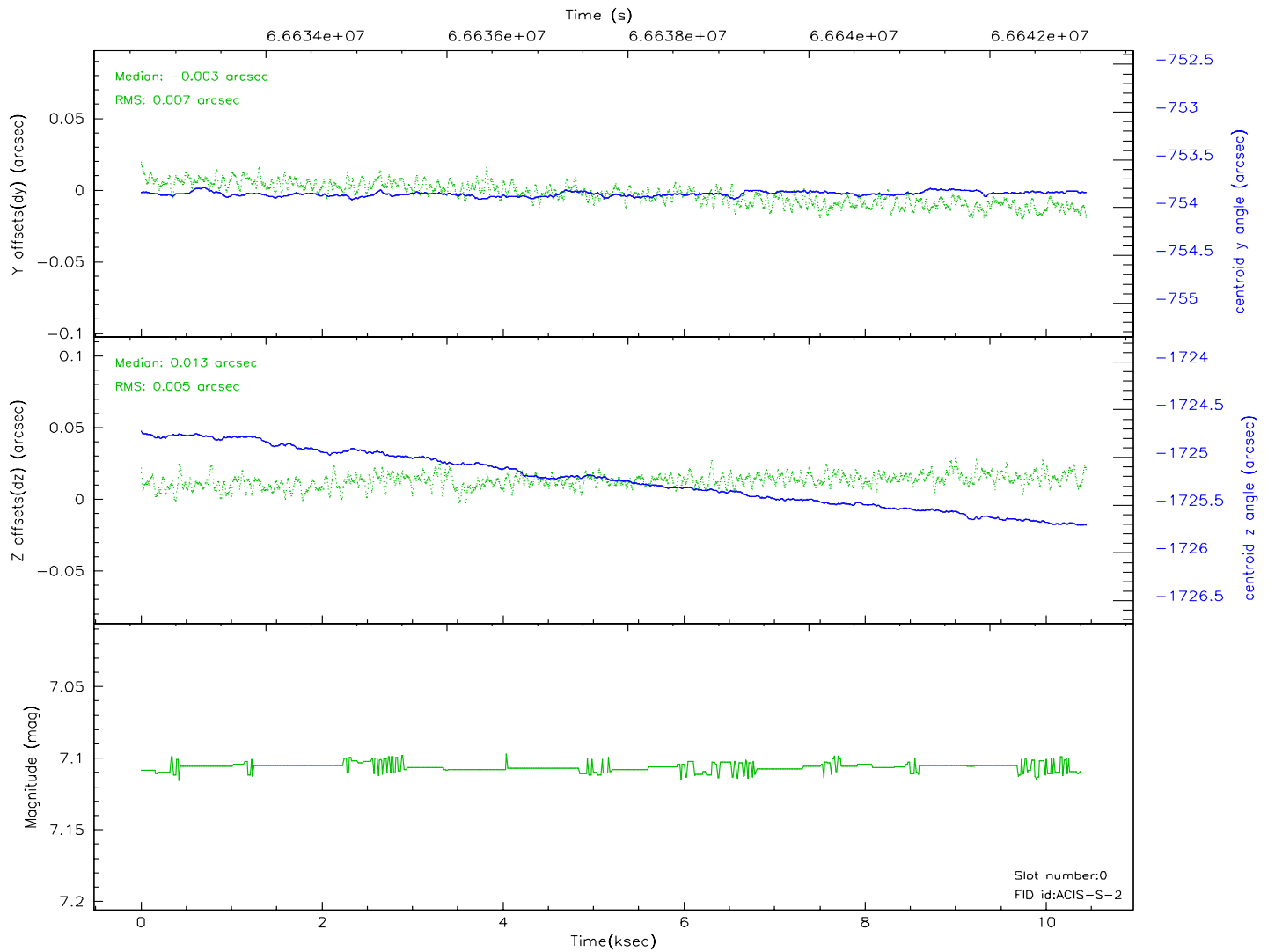
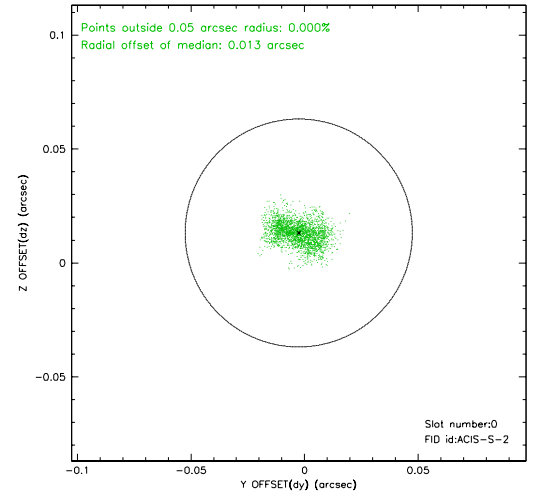
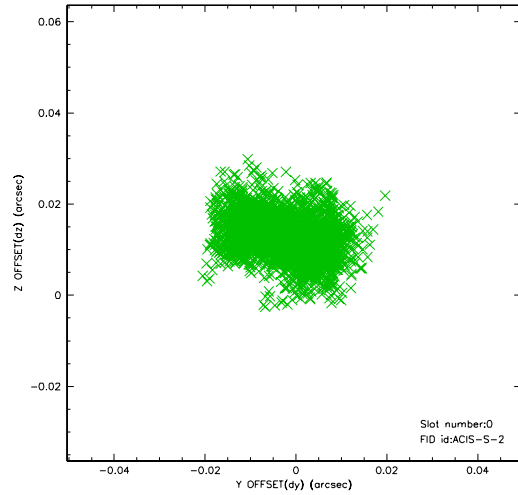


2.4.5 Slot 7

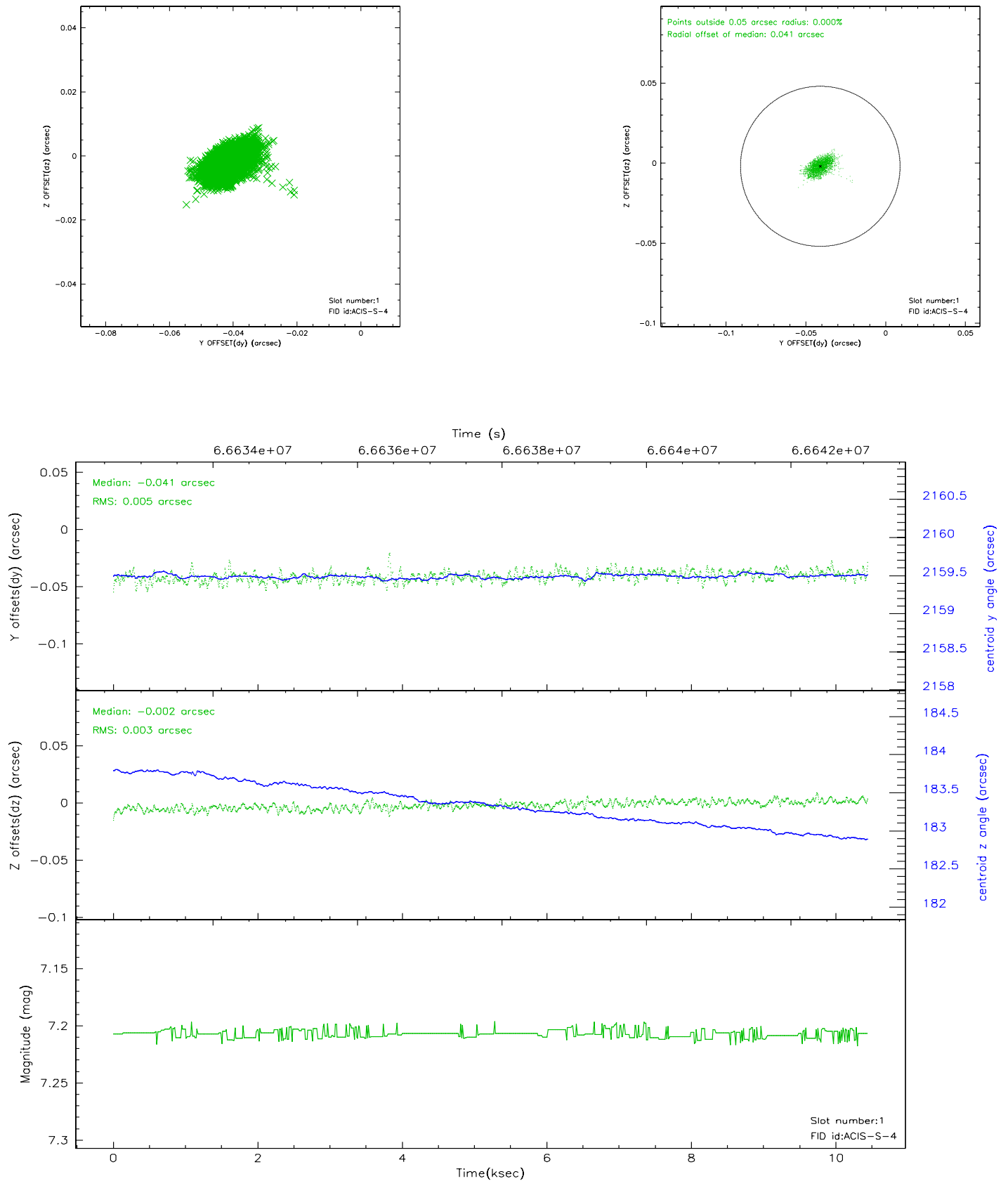


2.5 FID Slots

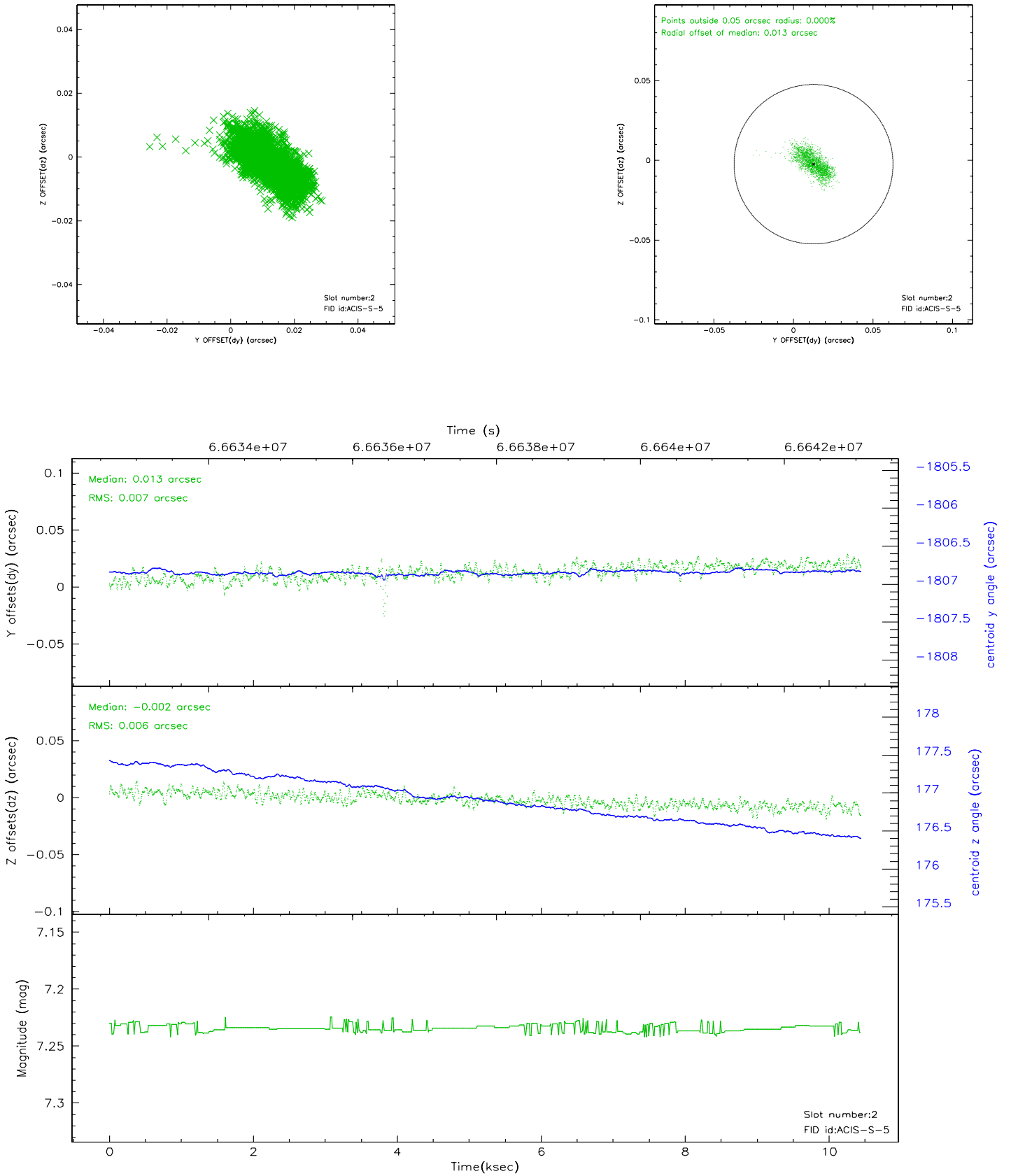
2.5.1 Slot 0



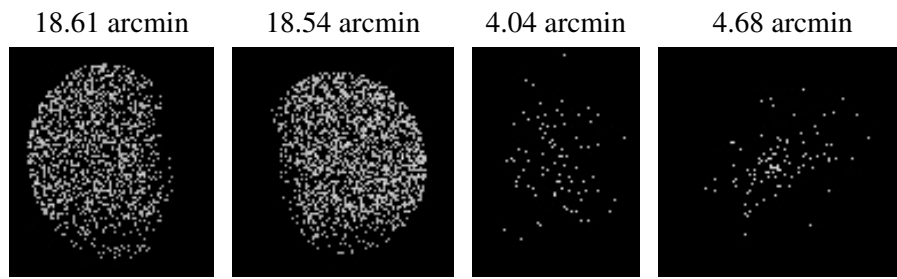
2.5.2 Slot 1



2.5.3 Slot 2



3 Point Sources



A Summary

A.1 Status

V&V Scientist	Jen Lauer
V&V Date (YYYY-MM-DD)	2007.07.16
V&V Edition	1
V&V Disposition and Status	OK
V&V Charge Time	9.046

A.2 Comments