

V&V Reference Report

L2 ASCDS Version : 7.6.11.10

Observation 60132 - L2 Version 4
Chandra X-Ray Center

L2 Processing Date : Feb 4 2009

Contents

1	Front	2
2	OBI Primary	3
2.1	OBI	3
2.1.1	Images	3
2.1.2	Bias	3
2.1.3	Parameters	4
2.1.4	Events	4
2.2	Compared Parameters	5
2.3	Star Slots	6
2.4	FID Slots	6
3	OBI Secondary	6
3.1	OBI	6
3.1.1	Images	6
3.1.2	Bias	6
3.1.3	Parameters	7
3.1.4	Events	7
A	Summary	8
A.1	Status	8
A.2	Comments	8

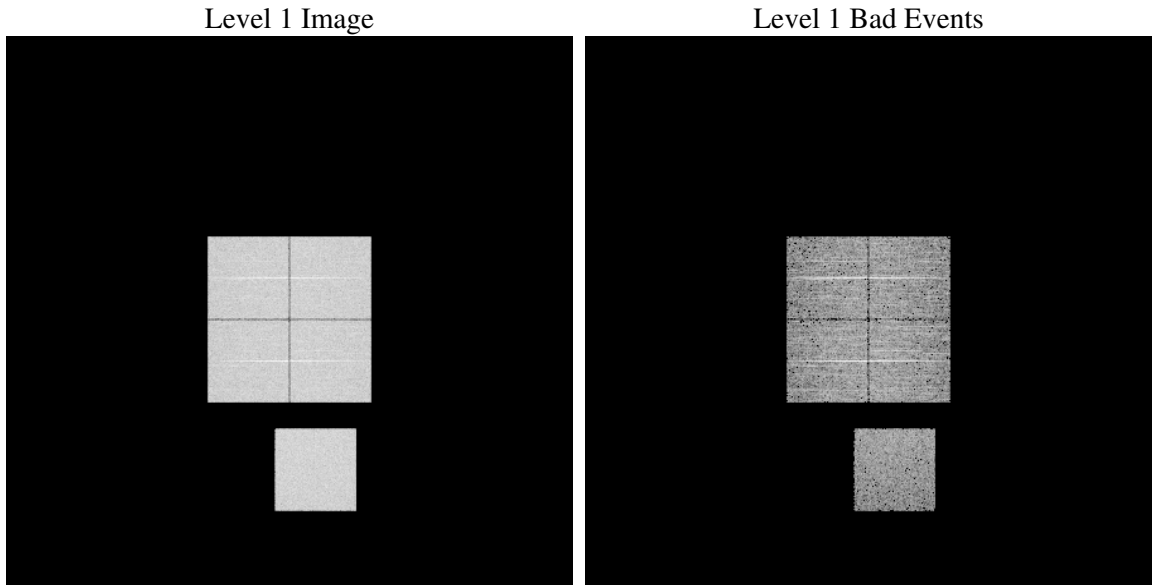
1 Front

seq_num	
obs_id	60132
title	ACIS-01237 diagnostics
observer	CHANDRA engineering request/realtime commanding
object	
dtcycle	0
cycle	P
ra_targ	0.0
dec_targ	0.0
ra_nom	289.03402831702
dec_nom	-32.997144696141
roll_nom	332.82029284893
revision	4
ontime	4136.9855927825
livetime	4089.0386933609
ontime0	4091.1162327528
ontime1	4130.0266327858
ontime2	3945.8515126109
ontime3	4020.1723126769
ontime7	4136.9855927825
l2events	580635

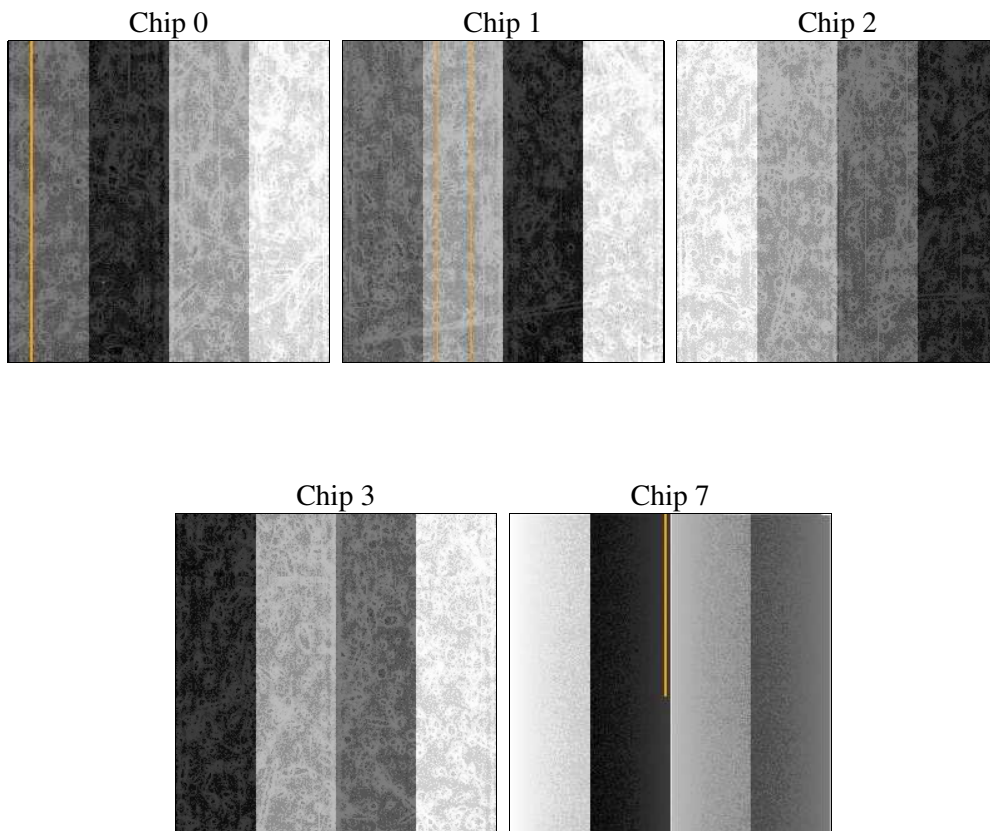
2 OBI Primary

2.1 OBI

2.1.1 Images



2.1.2 Bias



2.1.3 Parameters

obi_num	0
ascdsver	7.6.11.10
caldbver	3.5.1
date	2009-02-04T14:59:23
revision	4

sched_exp_time	6360
ontime	4136.9855927825
ontime0	4091.1162327528
ontime1	4130.0266327858
ontime2	3945.8515126109
ontime3	4020.1723126769
ontime7	4136.9855927825
llevents	750864

2.1.4 Events

	ccd 0	ccd 1	ccd 2	ccd 3	ccd 7
level 1 events	146963	149057	146541	150160	158143
rejected events	27249	28126	29882	30685	24131
rejected %	18%	18%	20%	20%	15%

	ccd 0	ccd 1	ccd 2	ccd 3	ccd 7
grade 0 events	65848	66271	65270	67288	32567
	44%	44%	44%	44%	20%
grade 1 events	385	344	498	427	96
	0%	0%	0%	0%	0%
grade 2 events	21129	21673	20100	20246	29652
	14%	14%	13%	13%	18%
grade 3 events	7893	7643	7608	7890	13695
	5%	5%	5%	5%	8%
grade 4 events	7781	7567	7646	7894	13374
	5%	5%	5%	5%	8%
grade 5 events	1771	1858	1717	1871	4478
	1%	1%	1%	1%	2%
grade 6 events	17436	18195	16464	16584	45163
	11%	12%	11%	11%	28%
grade 7 events	24720	25506	27238	27960	19118
	16%	17%	18%	18%	12%

2.2 Compared Parameters

Parameter	Planned	Actual
Instrument	ACIS	ACIS
Detector	ACIS-01237	ACIS-01237
Grating	NONE	NONE
Data mode	FAINT	FAINT
Observation mode	SECONDARY	SECONDARY
Pointing RA	289.0340283170156	289.0340283170156
Pointing Dec	-32.99714469614063	-32.99714469614063
Pointing Roll	332.8202928489287	332.8202928489287
SIM focus pos (mm)	-0.68282252473119	-0.68282252473119
SIM defocus (mm)	0.8505140384245534	0.8505140384245534
SIM translation stage pos (mm)	250.4660330802	250.4660330802
SIM translation stage offset (mm)	-0.01005726120527584	-0.01005726120527584
Observation start time	206295693.482682	206295693.482682
Observation start date	2004-07-15T16:53:00	2004-07-15T16:21:33
Observation end time	206305211.018084	206305211.018084
Observation end date	2004-07-15T18:39:00	2004-07-15T19:00:11
Read mode	TIMED	TIMED

Parameter	Planned	Actual
Obspar format version number	6	6
Obspar file type	PREDICTED	ACTUAL
Obspar update status	OVERRIDE	OVERRIDE
Number of optional ACIS chips dropped	0	0
On-chip summing requested	N	N
Subarray requested	NONE	NONE
Alternating exposures requested	Y	Y
Primary exposure time	3.5	3.5
Secondary exposure time	3.2	3.2
Duty cycle	1	1

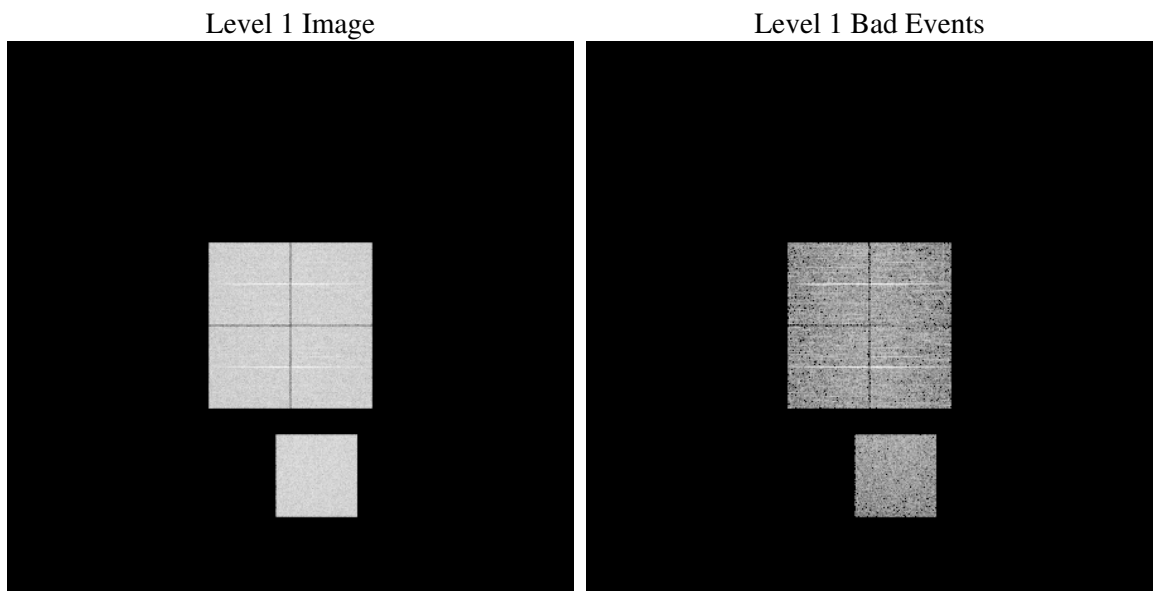
2.3 Star Slots

2.4 FID Slots

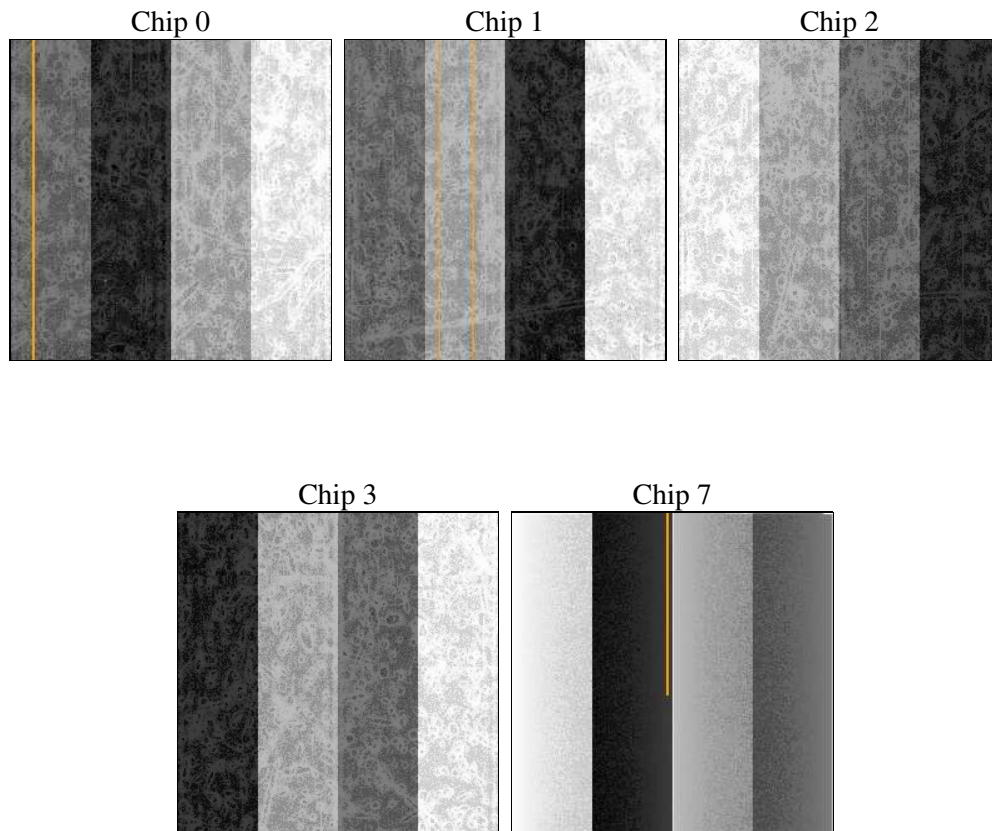
3 OBI Secondary

3.1 OBI

3.1.1 Images



3.1.2 Bias



3.1.3 Parameters

obi_num	0
ascdsver	7.6.11.10
caldsver	3.5.1
date	2009-02-04T15:00:26
revision	4

sched_exp_time	6360
ontime	3788.1166579127
ontime0	3726.5368980765
ontime1	3775.1524979472
ontime2	3545.0386585593
ontime3	3658.4750582576
ontime7	3788.1166579127
l1events	688742

3.1.4 Events

	ccd 0	ccd 1	ccd 2	ccd 3	ccd 7
level 1 events	136639	138065	131728	136620	145690
rejected events	26653	26825	26203	27801	22952
rejected %	19%	19%	19%	20%	15%

	ccd 0	ccd 1	ccd 2	ccd 3	ccd 7
grade 0 events	60860	61053	59562	61002	30084
	44%	44%	45%	44%	20%
grade 1 events	362	346	374	387	91
	0%	0%	0%	0%	0%
grade 2 events	19433	19905	17901	18949	27188
	14%	14%	13%	13%	18%
grade 3 events	7025	7138	6846	7176	12388
	5%	5%	5%	5%	8%
grade 4 events	7106	7101	6778	7156	12170
	5%	5%	5%	5%	8%
grade 5 events	1641	1669	1612	1720	4122
	1%	1%	1%	1%	2%
grade 6 events	16069	16510	14896	15024	41420
	11%	11%	11%	10%	28%
grade 7 events	24143	24343	23759	25206	18227
	17%	17%	18%	18%	12%

A Summary

A.1 Status

V&V Scientist	Jen Lauer
V&V Date (YYYY-MM-DD)	2009.02.05
V&V Edition	1
V&V Disposition and Status	OK
V&V Charge Time	7.92510225

A.2 Comments

This obsid was reprocessed to correct minor errors in parameters used in processing. Some of these parameters cannot be determined automatically for this observation and were derived from spacecraft telemetry.