

V&V Reference Report

L2 ASCDS Version : 7.6.7.2

Observation 60102 - L2 Version 001
Chandra X-Ray Center

L2 Processing Date : Apr 26 2006

Contents

1	Front	2
2	OBI	3
2.1	OBI	3
2.1.1	Images	3
2.1.2	Bias	3
2.1.3	Parameters	4
2.1.4	Events	4
2.2	Compared Parameters	5
2.3	Aspect	6
2.4	Star Slots	8
2.5	FID Slots	8
A	Summary	9
A.1	Status	9
A.2	Comments	9

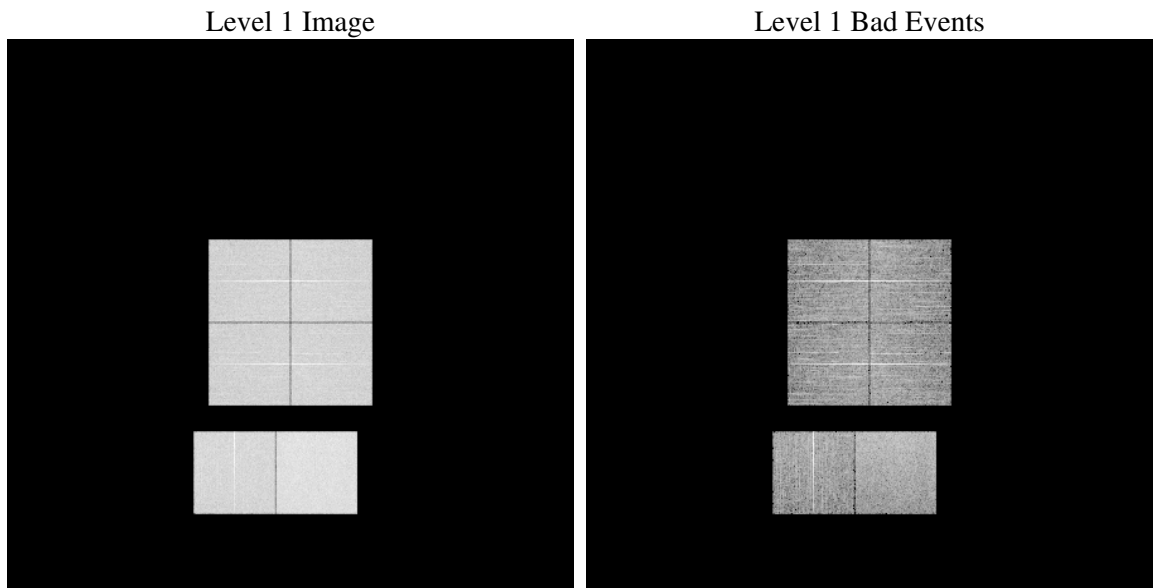
1 Front

seq_num	
obs_id	60102
title	ACIS-012367 diagnostics
observer	CHANDRA engineering request/realtime commanding
object	
dtcycle	0
cycle	P
ra_targ	0.0
dec_targ	0.0
ra_nom	329.49113115648
dec_nom	-18.972655718402
roll_nom	74.109878857114
revision	2
ontime	8255.999969244
livetime	8151.4575264671
ontime0	6236.8738550246
ontime1	6411.887127459
ontime2	6039.1754442155
ontime3	6262.8028120399
ontime6	6658.2012384832
ontime7	8255.999969244
l2events	1142310

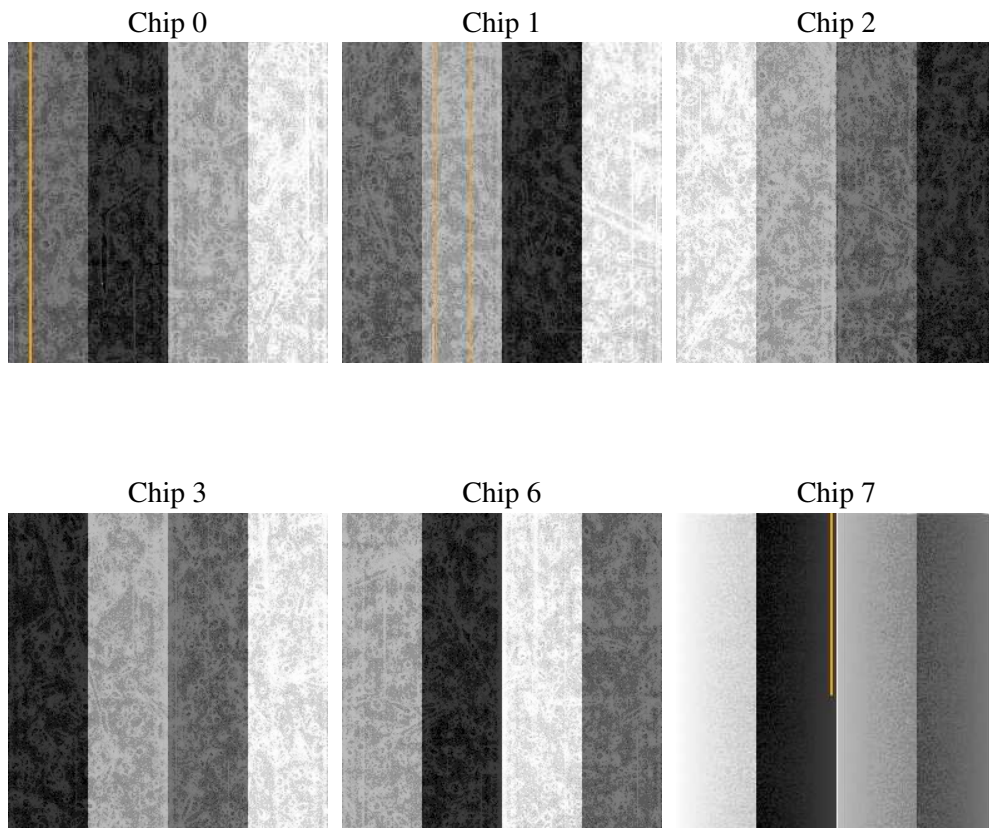
2 OBI

2.1 OBI

2.1.1 Images



2.1.2 Bias



2.1.3 Parameters

obi_num	3
ascdsver	7.6.7.2
caldbver	3.2.1
date	2006-04-27T02:08:34
revision	2

sched_exp_time	0.0
ontime	8277.5252179503
ontime0	6251.9171631634
ontime1	6426.9304255843
ontime2	6050.9777322412
ontime3	6277.8461201787
ontime6	6670.003536433
ontime7	8277.5252179503
l1events	1497903

2.1.4 Events

	ccd 0	ccd 1	ccd 2	ccd 3	ccd 6	ccd 7
level 1 events	229210	235931	225317	234696	255830	316919
rejected events	46026	46440	46534	47307	50216	62550
rejected %	20%	19%	20%	20%	19%	19%

	ccd 0	ccd 1	ccd 2	ccd 3	ccd 6	ccd 7
grade 0 events	100927	103511	100435	105364	111112	42187
	44%	43%	44%	44%	43%	13%
grade 1 events	583	568	648	694	596	119
	0%	0%	0%	0%	0%	0%
grade 2 events	31986	34006	29877	31762	35788	78128
	13%	14%	13%	13%	13%	24%
grade 3 events	11886	12071	11679	12421	12730	17713
	5%	5%	5%	5%	4%	5%
grade 4 events	11716	12077	11722	12130	12815	17356
	5%	5%	5%	5%	5%	5%
grade 5 events	2753	2878	2609	2994	3174	7189
	1%	1%	1%	1%	1%	2%
grade 6 events	27027	28194	25356	26116	33425	99552
	11%	11%	11%	11%	13%	31%
grade 7 events	42332	42626	42991	43215	46190	54675
	18%	18%	19%	18%	18%	17%

2.2 Compared Parameters

Parameter	Planned	Actual	Parameter	Planned	Actual
Instrument	ACIS	ACIS	Obspar format version number	6	6
Detector	ACIS-012367	ACIS-012367	Obspar file type	PREDICTED	ACTUAL
Grating	NONE	NONE	Obspar update status	NONE	UPDATED
Data mode	FAINT	FAINT	On-chip summing requested	N	N
Observation mode	SECONDARY	SECONDARY	Subarray requested	NONE	NONE
Pointing RA	0	329.4911311564812	Alternating exposures requested	N	N
Pointing Dec	0	-18.97265571840238	Primary exposure time	3.2	3.2
Pointing Roll	0.0	74.10987885711424			
SIM focus pos (mm)	-0.782348	-0.6828225247311905			
SIM defocus (mm)	0	0.8505141146731063			
SIM translation stage pos (mm)	-233.592463	250.466033080201			
SIM translation stage offset (mm)	0	-0.01005468664627074			
Observation start time	208389922.325787	208389921.30079			
Observation start date	2004-08-08T22:05:22	2004-08-08T22:05:21			
Observation end time	208412304.226782	208412303.20179			
Observation end date	2004-08-09T04:18:24	2004-08-09T04:18:23			
Read mode	TIMED	TIMED			

2.3 Aspect

2.4 Star Slots

2.5 FID Slots

A Summary

A.1 Status

V&V Scientist	Jen Lauer
V&V Date (YYYY-MM-DD)	2006.04.27
V&V Edition	1
V&V Disposition and Status	OK
V&V Charge Time	8.25599996

A.2 Comments

The ACIS focal plane temperature was above calibration limits for the first ksec of the observation.