

V&V Reference Report

L2 ASCDS Version : 7.6.7.1

Observation 60072 - L2 Version 001
Chandra X-Ray Center

L2 Processing Date : Apr 19 2006

Contents

1	Front	2
2	OBI	3
2.1	OBI	3
2.1.1	Images	3
2.1.2	Bias	3
2.1.3	Parameters	4
2.1.4	Events	4
2.2	Compared Parameters	5
2.3	Aspect	6
2.4	Star Slots	8
2.5	FID Slots	8
A	Summary	9
A.1	Status	9
A.2	Comments	9

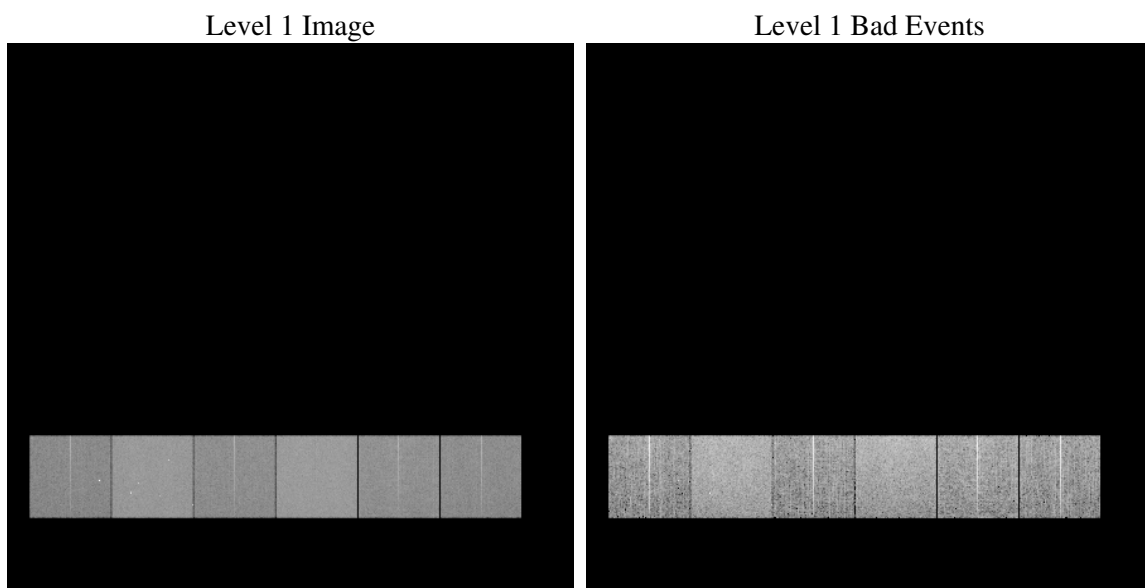
1 Front

seq_num	
obs_id	60072
title	ACIS-456789 diagnostics
observer	CHANDRA engineering request/realtime commanding
object	
dtcycle	0
cycle	P
ra_targ	0.0
dec_targ	0.0
ra_nom	346.02068000209
dec_nom	-24.978327529092
roll_nom	16.277286116712
revision	2
ontime	8278.2926002145
livetime	8173.4678747212
ontime4	5312.9227507114
ontime5	8278.3336402178
ontime6	5786.0646477044
ontime7	8278.2926002145
ontime8	5970.8262697458
ontime9	5675.7486972809
l2events	1116996

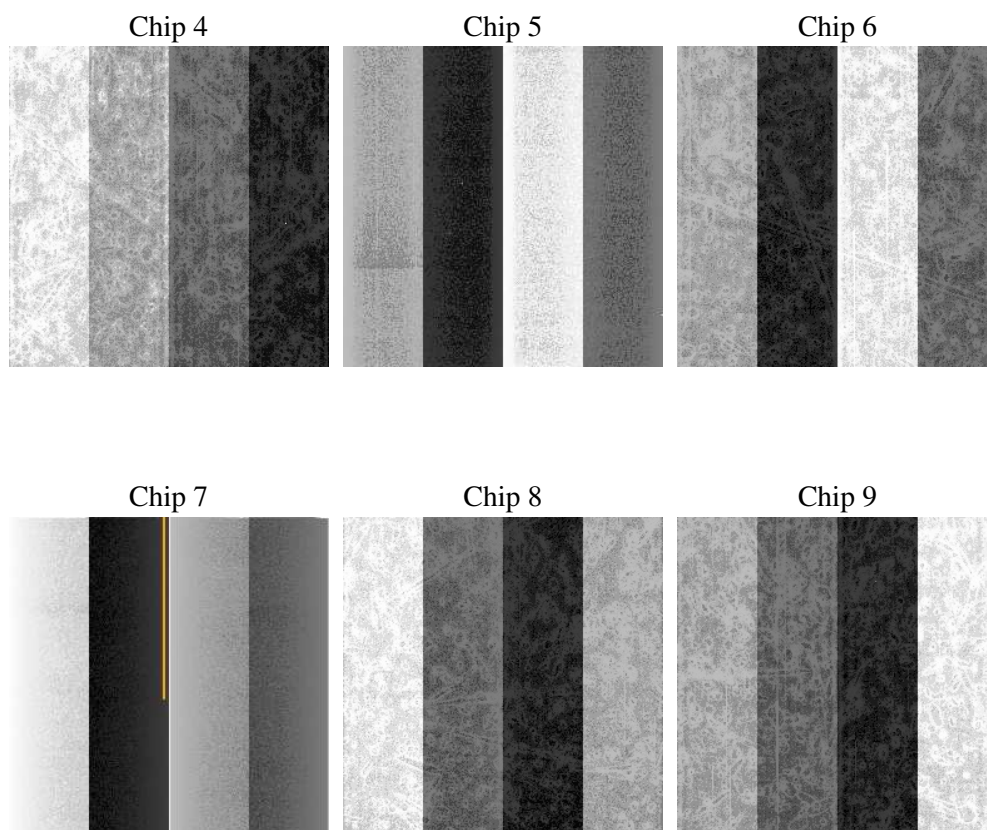
2 OBI

2.1 OBI

2.1.1 Images



2.1.2 Bias



2.1.3 Parameters

obi_num	1
ascdsver	7.6.7.1
caldsver	3.2.1
date	2006-04-19T18:36:09
revision	2

sched_exp_time	0.0
ontime	8280.7681188285
ontime4	5315.2751493156
ontime5	8280.7681188285
ontime6	5788.4580863118
ontime7	8280.7681188285
ontime8	5973.1944194138
ontime9	5678.2652558982
l1events	1499424

2.1.4 Events

	ccd 4	ccd 5	ccd 6	ccd 7	ccd 8	ccd 9
level 1 events	198234	299185	224486	319570	242181	215768
rejected events	44602	66135	46064	61935	52169	46456
rejected %	22%	22%	20%	19%	21%	21%

	ccd 4	ccd 5	ccd 6	ccd 7	ccd 8	ccd 9
grade 0 events	89025	25882	96627	44401	102324	92499
	44%	8%	43%	13%	42%	42%
grade 1 events	726	127	558	124	590	580
	0%	0%	0%	0%	0%	0%
grade 2 events	24400	109279	30724	77924	33534	29114
	12%	36%	13%	24%	13%	13%
grade 3 events	10215	7333	11177	18276	12605	10965
	5%	2%	4%	5%	5%	5%
grade 4 events	10196	7115	10938	18157	12089	10772
	5%	2%	4%	5%	4%	4%
grade 5 events	2600	6568	2924	7301	3602	3123
	1%	2%	1%	2%	1%	1%
grade 6 events	19901	83537	29049	98974	29559	26076
	10%	27%	12%	30%	12%	12%
grade 7 events	41171	59344	42489	54413	47878	42639
	20%	19%	18%	17%	19%	19%

2.2 Compared Parameters

Parameter	Planned	Actual	Parameter	Planned	Actual
Instrument	ACIS	ACIS	Obspar format version number	6	6
Detector	ACIS-456789	ACIS-456789	Obspar file type	PREDICTED	ACTUAL
Grating	NONE	NONE	Obspar update status	NONE	UPDATED
Data mode	FAINT	FAINT	On-chip summing requested	N	N
Observation mode	SECONDARY	SECONDARY	Subarray requested	NONE	NONE
Pointing RA	0	346.0206800020883	Alternating exposures requested	N	N
Pointing Dec	0	-24.97832752909153	Primary exposure time	3.2	3.2
Pointing Roll	0.0	16.27728611671157			
SIM focus pos (mm)	-0.684267	-0.6828225247311905			
SIM defocus (mm)	0	0.8505141146731063			
SIM translation stage pos (mm)	-190.132523	250.466033080201			
SIM translation stage offset (mm)	0	-0.01005468664627074			
Observation start time	210442698.117185	210442697.09217			
Observation start date	2004-09-01T16:18:18	2004-09-01T16:18:17			
Observation end time	210466510.918247	210466509.89323			
Observation end date	2004-09-01T22:55:11	2004-09-01T22:55:09			
Read mode	TIMED	TIMED			

2.3 Aspect

2.4 Star Slots

2.5 FID Slots

A Summary

A.1 Status

V&V Scientist	Jen Lauer
V&V Date (YYYY-MM-DD)	2006.04.19
V&V Edition	1
V&V Disposition and Status	OK
V&V Charge Time	8.2782926

A.2 Comments