

V&V Reference Report

L2 ASCDS Version : 8.5

Observation 60042 - L2 Version 3
Chandra X-Ray Center

L2 Processing Date : Dec 9 2012

Contents

1	Front	2
2	OBI	3
2.1	OBI	3
2.1.1	Images	3
2.1.2	Bias	3
2.1.3	Parameters	4
2.1.4	Events	4
2.2	Compared Parameters	5
2.3	Star Slots	6
2.4	FID Slots	6
A	Summary	7
A.1	Status	7
A.2	Comments	7

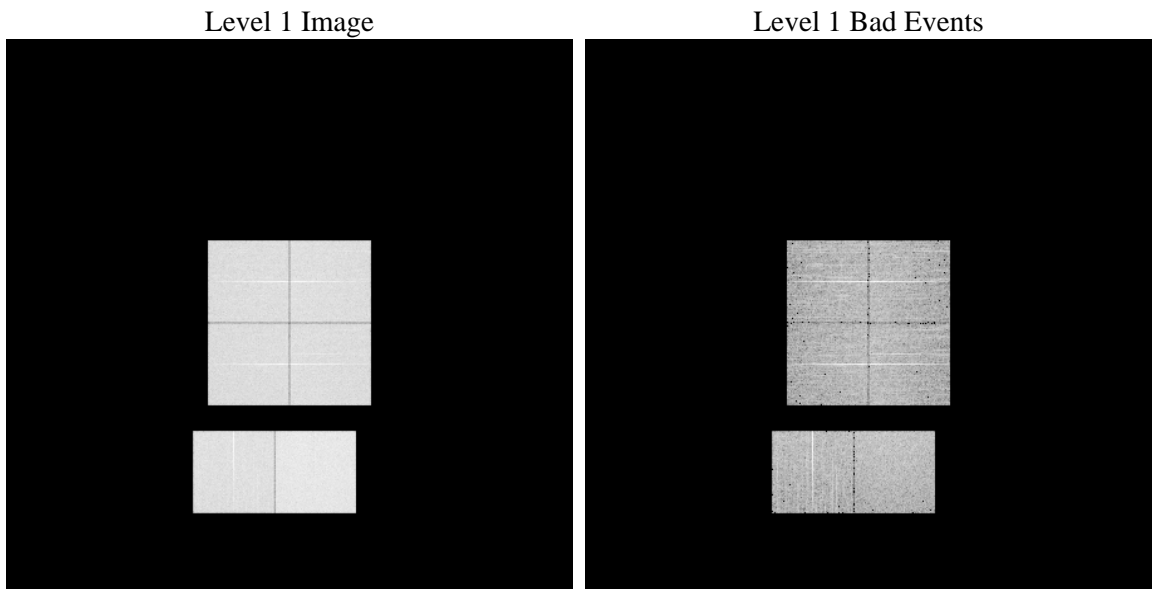
1 Front

seq_num	 	Sequence number
obs_id	60042	Observation id
title	ACIS-012367 diagnostics	Proposal title
observer	CHANDRA engineering request/realtime commanding	Principal investig
object	 	Source name
dtcycle	0	
cycle	P	events from which exps? Prim/Second/Both
ra_targ	0.0	Observer's specified target RA [deg]
dec_targ	0.0	Observer's specified target Dec [deg]
ra_nom	45.972753562203	Nominal RA [deg]
dec_nom	29.015807309022	Nominal Dec [deg]
roll_nom	113.55387635151	Nominal Roll [deg]
revision	3	Processing version of data
ontime	7801.5999709368	Sum of GTIs [s]
livetime	7702.8114145452	Livetime [s]
ontime0	5800.9631859958	Sum of GTIs [s]
ontime1	6005.1855226457	Sum of GTIs [s]
ontime2	5684.3705051839	Sum of GTIs [s]
ontime3	5792.1992657483	Sum of GTIs [s]
ontime6	6155.1881357729	Sum of GTIs [s]
ontime7	7801.5999709368	Sum of GTIs [s]
l2events	1099301	Number of level 2 events

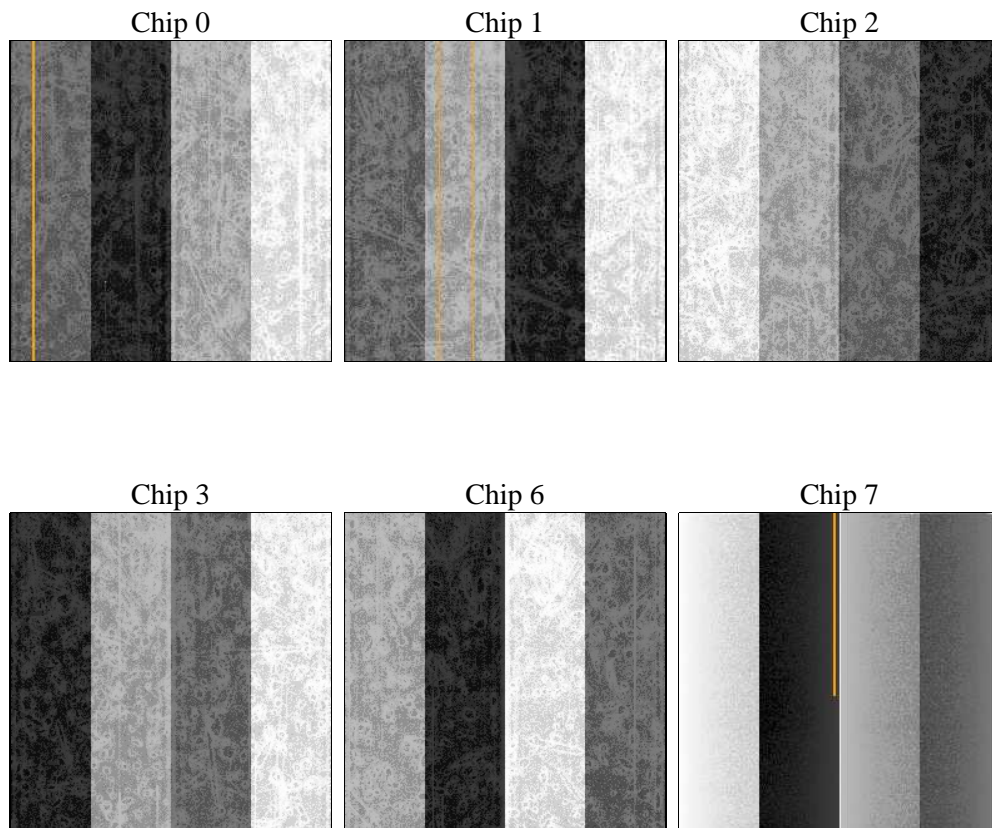
2 OBI

2.1 OBI

2.1.1 Images



2.1.2 Bias



2.1.3 Parameters

obi_num	1	Obi number	sched_exp_time	0.0	[s] Scheduled observation exposure time
ascdsver	8.5	Processing system revision	ontime	7801.5999709368	Sum of GTIs [s]
caldsver	4.5.4	 	ontime0	5800.9631859958	Sum of GTIs [s]
date	2012-12-09T03:10:25	Date and time of file creation	ontime1	6005.1855226457	Sum of GTIs [s]
revision	3	Processing version of data	ontime2	5684.3705051839	Sum of GTIs [s]
			ontime3	5792.1992657483	Sum of GTIs [s]
			ontime6	6155.1881357729	Sum of GTIs [s]
			ontime7	7801.5999709368	Sum of GTIs [s]
			l1events	1415133	Number of level 1 events

2.1.4 Events

	ccd 0	ccd 1	ccd 2	ccd 3	ccd 6	ccd 7		ccd 0	ccd 1	ccd 2	ccd 3	ccd 6	ccd 7
level 1 events	217221	223947	213129	219567	239704	301565	grade 0 events	95643	98956	96189	98109	104332	61744
rejected events	42529	42078	40910	43257	46318	46744		44%	44%	45%	44%	43%	20%
rejected %	19%	18%	19%	19%	19%	15%	grade 1 events	570	530	602	630	570	210
								0%	0%	0%	0%	0%	0%
							grade 2 events	30476	32301	29016	30058	33235	56033
								14%	14%	13%	13%	13%	18%
							grade 3 events	11273	11609	11094	11602	12094	25072
								5%	5%	5%	5%	5%	8%
							grade 4 events	11270	11423	11189	11502	11949	24627
								5%	5%	5%	5%	4%	8%
							grade 5 events	2569	2761	2442	2851	2950	8248
								1%	1%	1%	1%	1%	2%
							grade 6 events	26030	27580	24731	25145	31888	87466
								11%	12%	11%	11%	13%	29%
							grade 7 events	39390	38787	37866	39670	42686	38165
								18%	17%	17%	18%	17%	12%

2.2 Compared Parameters

Parameter	Planned	Actual	Parameter	Planned	Actual
Instrument	ACIS	ACIS	Obspar format version number	7	7
Detector	ACIS-012367	ACIS-012367	Obspar file type	PREDICTED	ACTUAL
Grating	NONE	NONE	Obspar update status	NONE	UPDATED
Data mode	FAINT	FAINT	On-chip summing requested	N	N
Observation mode	SECONDARY	SECONDARY	Subarray requested	NONE	NONE
[deg] Pointing RA	0	45.97275356220331	Alternating exposures requested	N	N
[deg] Pointing Dec	0	29.01580730902231	[s] Primary exposure time	3.2	3.2
[deg] Pointing Roll	0.0	113.5538763515138			
[mm] SIM focus pos	-0.782348	-0.7809083437167272			
[mm] SIM defocus	0	0.7524282956875696			
[mm] SIM translation stage pos	-233.592463	250.466033080201			
[mm] SIM translation stage offset	0	-0.01005468664627074			
[s] Observation start time (MET)	211774339.226581	211774338.20157			
Observation start date	2004-09-17T02:12:19	2004-09-17T02:12:18			
[s] Observation end time (MET)	211792346.427386	211792345.40237			
Observation end date	2004-09-17T07:12:26	2004-09-17T07:12:25			
Read mode	TIMED	TIMED			

2.3 Star Slots

2.4 FID Slots

A Summary

A.1 Status

V&V Scientist	Joy Nichols
V&V Date (YYYY-MM-DD)	2013.02.01
V&V Edition	1
V&V Disposition and Status	OK
V&V Charge Time	7.8015999709368

A.2 Comments