

V&V Reference Report

L2 ASCDS Version : 7.6.7.1

Observation 60042 - L2 Version 001
Chandra X-Ray Center

L2 Processing Date : Apr 17 2006

Contents

1	Front	2
2	OBI	3
2.1	OBI	3
2.1.1	Images	3
2.1.2	Bias	3
2.1.3	Parameters	4
2.1.4	Events	4
2.2	Compared Parameters	5
2.3	Aspect	6
2.4	Star Slots	8
2.5	FID Slots	8
A	Summary	9
A.1	Status	9
A.2	Comments	9

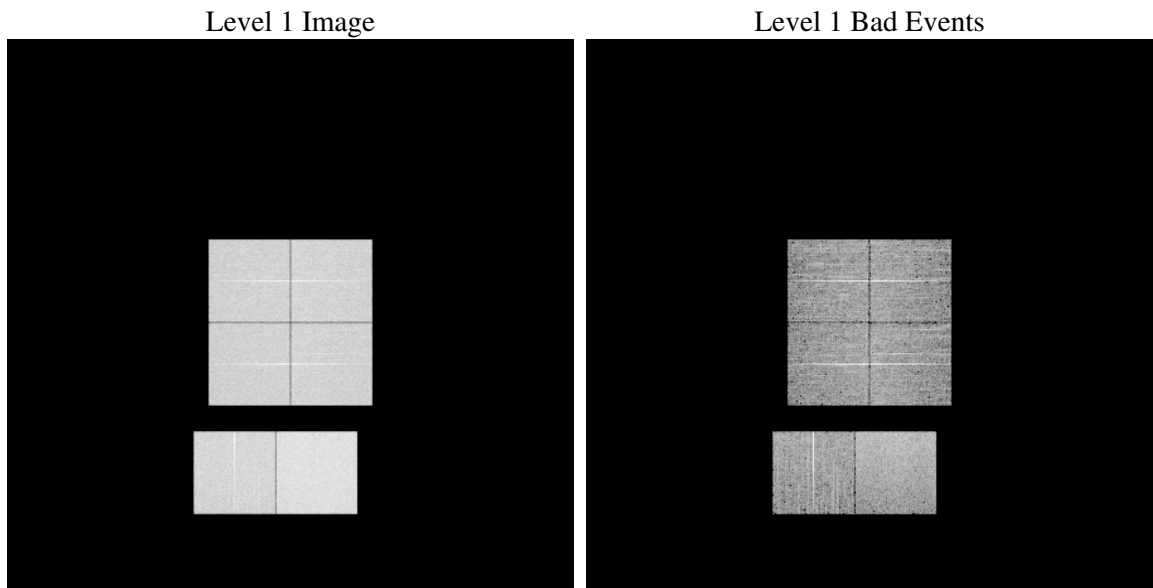
1 Front

seq_num	
obs_id	60042
title	ACIS-012367 diagnostics
observer	CHANDRA engineering request/realtime commanding
object	
dtcycle	0
cycle	P
ra_targ	0.0
dec_targ	0.0
ra_nom	45.972766221501
dec_nom	29.01578183253
roll_nom	113.55387020357
revision	2
ontime	7801.5999709368
livetime	7702.8114145452
ontime0	5799.3631860018
ontime1	6003.5855226517
ontime2	5682.7705051899
ontime3	5792.1992657483
ontime6	6155.1881357729
ontime7	7801.5999709368
l2events	1088299

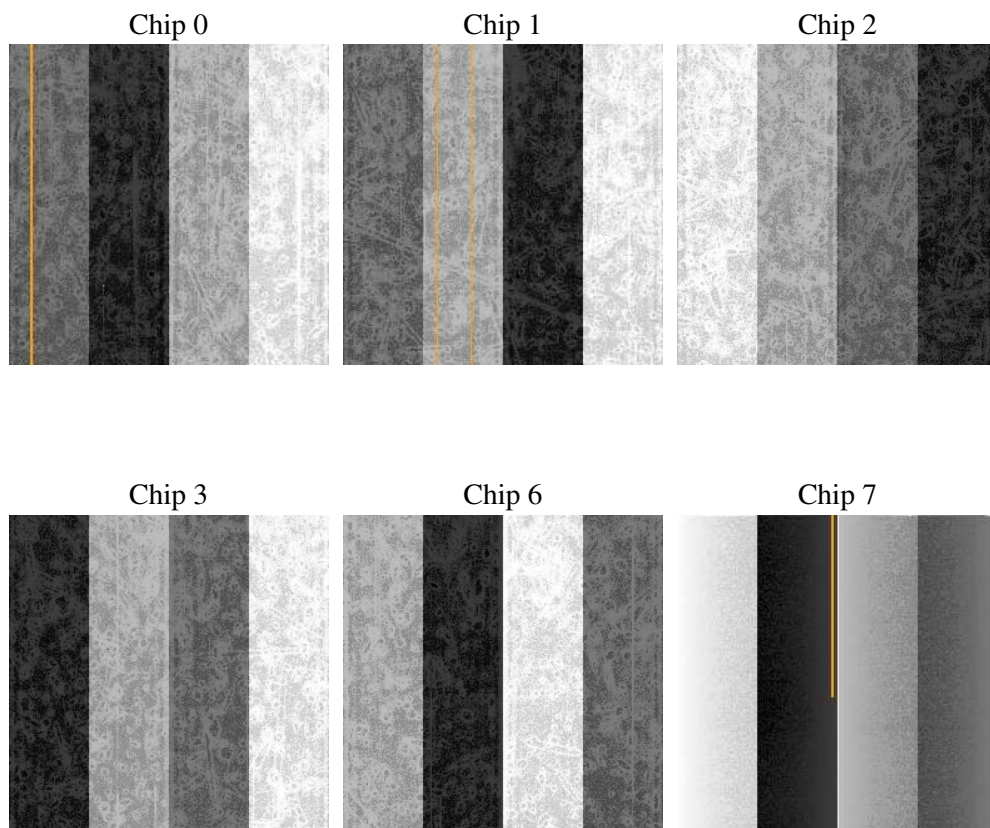
2 OBI

2.1 OBI

2.1.1 Images



2.1.2 Bias



2.1.3 Parameters

obi_num	1
ascdsver	7.6.7.1
caldsver	3.2.1
date	2006-04-18T00:21:39
revision	2

sched_exp_time	0.0
ontime	7804.3335884809
ontime0	5801.4149434865
ontime1	6005.596240133
ontime2	5684.740182668
ontime3	5794.9328832924
ontime6	6157.9217533171
ontime7	7804.3335884809
llevents	1415133

2.1.4 Events

	ccd 0	ccd 1	ccd 2	ccd 3	ccd 6	ccd 7
level 1 events	217221	223947	213129	219567	239704	301565
rejected events	42633	42173	41002	43245	46307	57664
rejected %	19%	18%	19%	19%	19%	19%

	ccd 0	ccd 1	ccd 2	ccd 3	ccd 6	ccd 7
grade 0 events	95644	98956	96189	98111	104340	41584
	44%	44%	45%	44%	43%	13%
grade 1 events	571	530	602	631	570	128
	0%	0%	0%	0%	0%	0%
grade 2 events	30475	32301	29016	30055	33227	74787
	14%	14%	13%	13%	13%	24%
grade 3 events	11273	11610	11094	11602	12094	16989
	5%	5%	5%	5%	5%	5%
grade 4 events	11270	11423	11188	11503	11949	16615
	5%	5%	5%	5%	4%	5%
grade 5 events	2569	2761	2442	2851	2950	6738
	1%	1%	1%	1%	1%	2%
grade 6 events	26030	27579	24732	25144	31888	94038
	11%	12%	11%	11%	13%	31%
grade 7 events	39389	38787	37866	39670	42686	50686
	18%	17%	17%	18%	17%	16%

2.2 Compared Parameters

Parameter	Planned	Actual	Parameter	Planned	Actual
Instrument	ACIS	ACIS	Obspar format version number	6	6
Detector	ACIS-012367	ACIS-012367	Obspar file type	PREDICTED	ACTUAL
Grating	NONE	NONE	Obspar update status	NONE	UPDATED
Data mode	FAINT	FAINT	On-chip summing requested	N	N
Observation mode	SECONDARY	SECONDARY	Subarray requested	NONE	NONE
Pointing RA	0	45.97276622150125	Alternating exposures requested	N	N
Pointing Dec	0	29.01578183253013	Primary exposure time	3.2	3.2
Pointing Roll	0.0	113.553870203573			
SIM focus pos (mm)	-0.782348	-0.7809083437167272			
SIM defocus (mm)	0	0.7524282956875696			
SIM translation stage pos (mm)	-233.592463	250.466033080201			
SIM translation stage offset (mm)	0	-0.01005468664627074			
Observation start time	211774339.226581	211774338.20157			
Observation start date	2004-09-17T02:12:19	2004-09-17T02:12:18			
Observation end time	211792346.427386	211792345.40237			
Observation end date	2004-09-17T07:12:26	2004-09-17T07:12:25			
Read mode	TIMED	TIMED			

2.3 Aspect

2.4 Star Slots

2.5 FID Slots

A Summary

A.1 Status

V&V Scientist	Jen Lauer
V&V Date (YYYY-MM-DD)	2006.04.18
V&V Edition	1
V&V Disposition and Status	OK
V&V Charge Time	7.80159997

A.2 Comments