

# V&V Reference Report

## L2 ASCDS Version : 8.5

Observation 59942 - L2 Version 3  
Chandra X-Ray Center

L2 Processing Date : Dec 12 2012

## Contents

<b>1</b>	<b>Front</b>	<b>2</b>
<b>2</b>	<b>OBI</b>	<b>3</b>
2.1	OBI . . . . .	3
2.1.1	Images . . . . .	3
2.1.2	Bias . . . . .	3
2.1.3	Parameters . . . . .	4
2.1.4	Events . . . . .	4
2.2	Compared Parameters . . . . .	5
2.3	Star Slots . . . . .	6
2.4	FID Slots . . . . .	6
<b>A</b>	<b>Summary</b>	<b>7</b>
A.1	Status . . . . .	7
A.2	Comments . . . . .	7

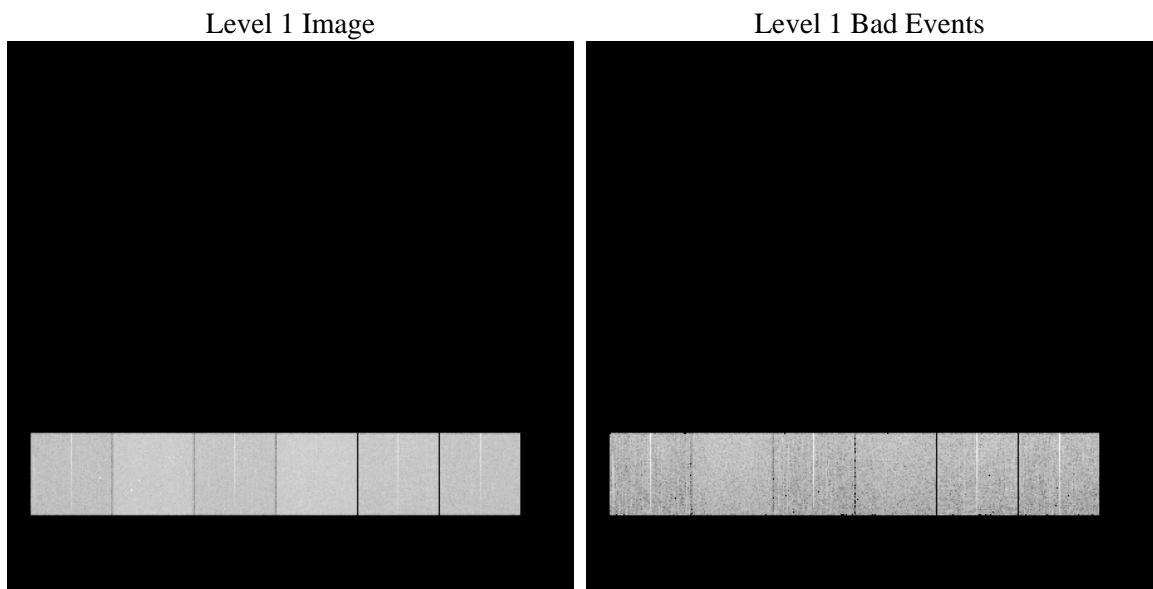
# 1 Front

seq_num	&#160	Sequence number
obs_id	59942	Observation id
title	ACIS-456789 diagnostics	Proposal title
observer	CHANDRA engineering request/realtime commanding	Principal investig
object	&#160	Source name
dtcycle	0	&#160
cycle	P	events from which exps? Prim/Second/Both
ra_targ	0.0	Observer's specified target RA [deg]
dec_targ	0.0	Observer's specified target Dec [deg]
ra_nom	97.96085796184	Nominal RA [deg]
dec_nom	43.012910041145	Nominal Dec [deg]
roll_nom	122.17832450563	Nominal Roll [deg]
revision	3	Processing version of data
ontime	6899.1962708235	Sum of GTIs [s]
livetime	6811.8344934451	Livetime [s]
ontime4	4828.3272711039	Sum of GTIs [s]
ontime5	6899.1999742985	Sum of GTIs [s]
ontime6	5346.8448642194	Sum of GTIs [s]
ontime7	6899.1962708235	Sum of GTIs [s]
ontime8	5469.9239593148	Sum of GTIs [s]
ontime9	5174.9494978786	Sum of GTIs [s]
l2events	924590	Number of level 2 events

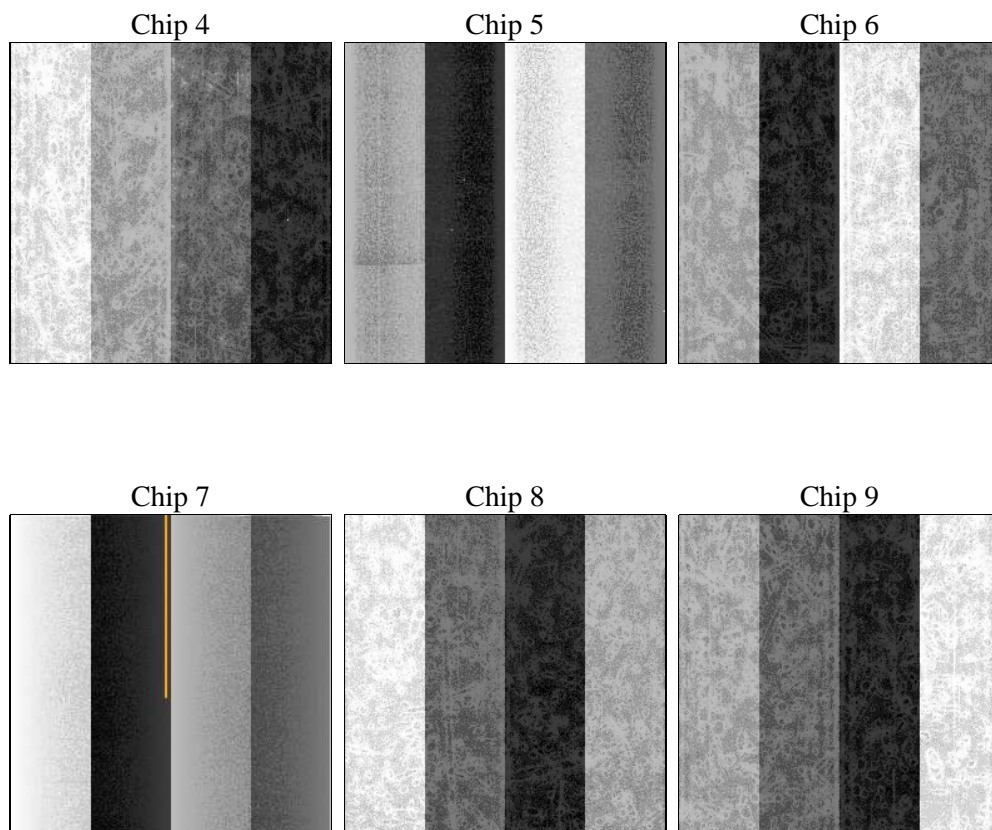
## 2 OBI

### 2.1 OBI

#### 2.1.1 Images



#### 2.1.2 Bias



### 2.1.3 Parameters

obi_num	0	Obi number	sched_exp_time	0.0	[s] Scheduled observation exposure time
ascdsver	8.5	Processing system revision	ontime	6899.1962708235	Sum of GTIs [s]
caldsver	4.5.4	&#160	ontime4	4828.3272711039	Sum of GTIs [s]
date	2012-12-12T12:48:43	Date and time of file creation	ontime5	6899.1999742985	Sum of GTIs [s]
revision	3	Processing version of data	ontime6	5346.8448642194	Sum of GTIs [s]
			ontime7	6899.1962708235	Sum of GTIs [s]
			ontime8	5469.9239593148	Sum of GTIs [s]
			ontime9	5174.9494978786	Sum of GTIs [s]
			l1events	1251327	Number of level 1 events

### 2.1.4 Events

	ccd 4	ccd 5	ccd 6	ccd 7	ccd 8	ccd 9		ccd 4	ccd 5	ccd 6	ccd 7	ccd 8	ccd 9
level 1 events	170966	238964	194756	253857	208364	184420	grade 0 events	74656	36590	82744	50260	86720	77991
rejected events	43021	51572	42522	44327	48115	43001		43%	15%	42%	19%	41%	42%
rejected %	25%	21%	21%	17%	23%	23%	grade 1 events	612	178	407	189	487	467
								0%	0%	0%	0%	0%	0%
							grade 2 events	19342	71423	26126	46462	28310	23862
								11%	29%	13%	18%	13%	12%
							grade 3 events	8650	9960	9421	20458	10351	9051
								5%	4%	4%	8%	4%	4%
							grade 4 events	8510	9652	9397	20398	10206	8995
								4%	4%	4%	8%	4%	4%
							grade 5 events	2325	7745	2698	7694	3229	2875
								1%	3%	1%	3%	1%	1%
							grade 6 events	16787	59767	24546	71952	24662	21520
								9%	25%	12%	28%	11%	11%
							grade 7 events	40084	43649	39417	36444	44399	39659
								23%	18%	20%	14%	21%	21%

## 2.2 Compared Parameters

Parameter	Planned	Actual
Instrument	ACIS	ACIS
Detector	ACIS-456789	ACIS-456789
Grating	NONE	NONE
Data mode	FAINT	FAINT
Observation mode	SECONDARY	SECONDARY
[deg] Pointing RA	0	97.96085796183979
[deg] Pointing Dec	0	43.01291004114524
[deg] Pointing Roll	0.0	122.178324505631
[mm] SIM focus pos	-0.684267	-0.7809083437167272
[mm] SIM defocus	0	0.7524282956875696
[mm] SIM translation stage pos	-190.132523	250.466033080201
[mm] SIM translation stage offset	0	-0.01005468664627074
[s] Observation start time (MET)	218399646.373326	218399645.34833
Observation start date	2004-12-02T18:34:06	2004-12-02T18:34:05
[s] Observation end time (MET)	218419100.874202	218419099.8492
Observation end date	2004-12-02T23:58:21	2004-12-02T23:58:19
Read mode	TIMED	TIMED

Parameter	Planned	Actual
Obspar format version number	7	7
Obspar file type	PREDICTED	ACTUAL
Obspar update status	NONE	UPDATED
On-chip summing requested	N	N
Subarray requested	NONE	NONE
Alternating exposures requested	N	N
[s] Primary exposure time	3.2	3.2

## 2.3 Star Slots

## 2.4 FID Slots

## A Summary

### A.1 Status

V&V Scientist	Beth Sundheim
V&V Date (YYYY-MM-DD)	2013.01.04
V&V Edition	1
V&V Disposition and Status	OK
V&V Charge Time	6.8991962708235

### A.2 Comments