

# V&V Reference Report

## L2 ASCDS Version : 7.6.7.1

Observation 59922 - L2 Version 002  
Chandra X-Ray Center

L2 Processing Date : Apr 8 2006

## Contents

<b>1</b>	<b>Front</b>	<b>2</b>
<b>2</b>	<b>OBI</b>	<b>3</b>
2.1	OBI . . . . .	3
2.1.1	Images . . . . .	3
2.1.2	Bias . . . . .	3
2.1.3	Parameters . . . . .	4
2.1.4	Events . . . . .	4
2.2	Compared Parameters . . . . .	5
2.3	Aspect . . . . .	6
2.4	Star Slots . . . . .	8
2.5	FID Slots . . . . .	8
<b>A</b>	<b>Summary</b>	<b>9</b>
A.1	Status . . . . .	9
A.2	Comments . . . . .	9

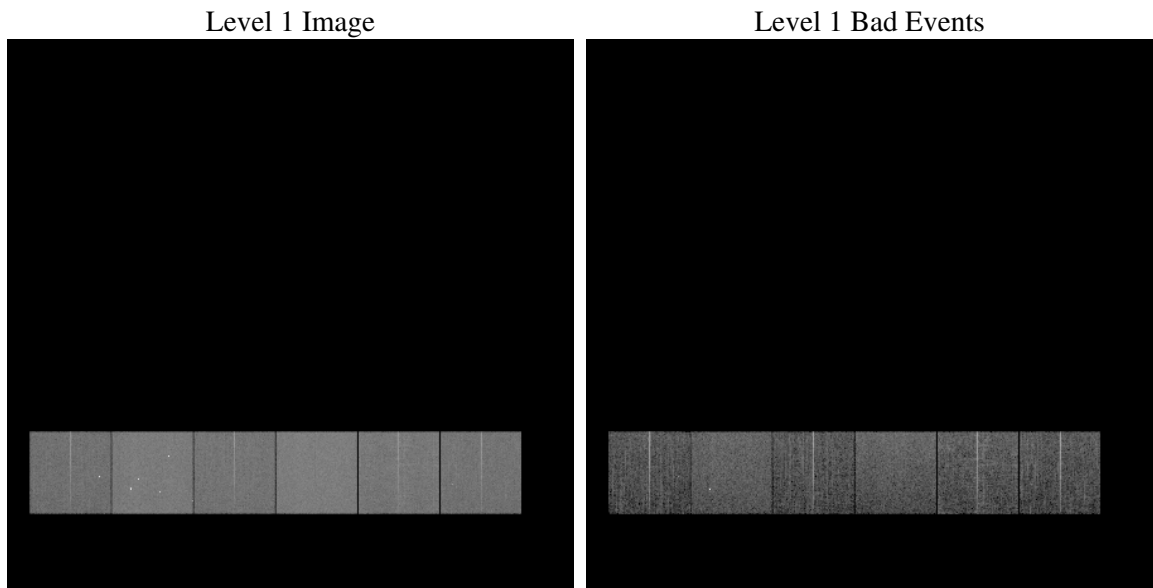
# 1 Front

seq_num	&#160
obs_id	59922
title	ACIS-456789 diagnostics
observer	CHANDRA engineering request/realtime commanding
object	&#160
dtcycle	0
cycle	P
ra_targ	0.0
dec_targ	0.0
ra_nom	59.595472839967
dec_nom	47.571640785875
roll_nom	223.50770555987
revision	2
ontime	8195.1999694705
livetime	8091.4274129001
ontime4	6072.3581108153
ontime5	8195.1999694705
ontime6	6451.5524361134
ontime7	8195.1999694705
ontime8	6795.0967454016
ontime9	6505.8857308328
l2events	1082002

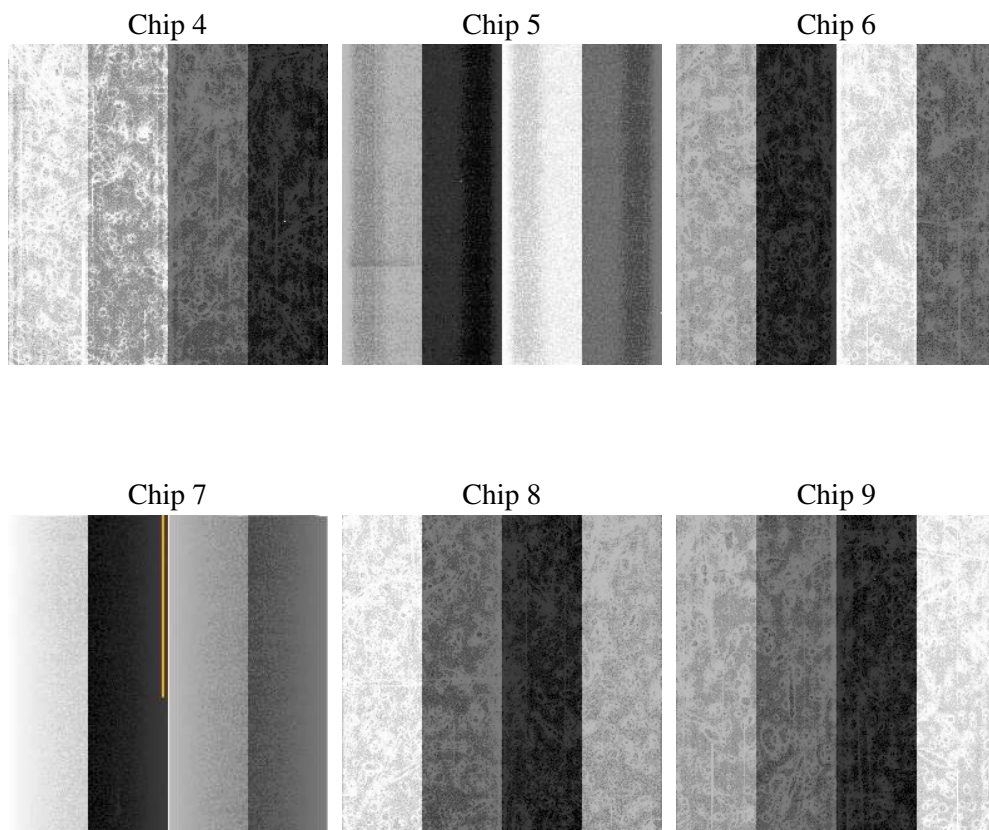
## 2 OBI

### 2.1 OBI

#### 2.1.1 Images



#### 2.1.2 Bias



### 2.1.3 Parameters

obi_num	0
ascdsver	7.6.7.1
caldsver	3.2.1
date	2006-04-09T01:09:14
revision	2

sched_exp_time	0.0
ontime	8284.0175626874
ontime4	6132.0068516135
ontime5	8284.0175626874
ontime6	6537.1290490627
ontime7	8284.0175626874
ontime8	6870.9504074752
ontime9	6579.2621619999
l1events	1496210

### 2.1.4 Events

	ccd 4	ccd 5	ccd 6	ccd 7	ccd 8	ccd 9
level 1 events	208634	283009	232043	295024	253100	224400
rejected events	51394	67573	52108	62241	58361	51199
rejected %	24%	23%	22%	21%	23%	22%

	ccd 4	ccd 5	ccd 6	ccd 7	ccd 8	ccd 9
grade 0 events	92442	27278	98902	40000	107296	96390
	44%	9%	42%	13%	42%	42%
grade 1 events	721	128	534	94	591	530
	0%	0%	0%	0%	0%	0%
grade 2 events	24959	100012	31991	71037	34437	30057
	11%	35%	13%	24%	13%	13%
grade 3 events	10577	6827	11494	16837	12883	11233
	5%	2%	4%	5%	5%	5%
grade 4 events	10508	6636	11215	16631	12641	11167
	5%	2%	4%	5%	4%	4%
grade 5 events	2726	6424	3242	7097	4009	3403
	1%	2%	1%	2%	1%	1%
grade 6 events	20388	77066	28769	90845	29636	26309
	9%	27%	12%	30%	11%	11%
grade 7 events	46313	58638	45896	52483	51607	45311
	22%	20%	19%	17%	20%	20%

## 2.2 Compared Parameters

Parameter	Planned	Actual	Parameter	Planned	Actual
Instrument	ACIS	ACIS	Obspar format version number	6	6
Detector	ACIS-456789	ACIS-456789	Obspar file type	PREDICTED	ACTUAL
Grating	NONE	NONE	Obspar update status	NONE	UPDATED
Data mode	FAINT	FAINT	On-chip summing requested	N	N
Observation mode	SECONDARY	SECONDARY	Subarray requested	NONE	NONE
Pointing RA	0	59.59547283996682	Alternating exposures requested	N	N
Pointing Dec	0	47.57164078587543	Primary exposure time	3.2	3.2
Pointing Roll	0.0	223.5077055598651			
SIM focus pos (mm)	-0.684267	-0.6828225247311905			
SIM defocus (mm)	0	0.8505141146731063			
SIM translation stage pos (mm)	-190.132523	250.466033080201			
SIM translation stage offset (mm)	0	-0.01005468664627074			
Observation start time	219366906.116818	219366905.09183			
Observation start date	2004-12-13T23:15:06	2004-12-13T23:15:05			
Observation end time	219378869.917356	219378868.89237			
Observation end date	2004-12-14T02:34:30	2004-12-14T02:34:28			
Read mode	TIMED	TIMED			

## 2.3 Aspect



## 2.4 Star Slots

## 2.5 FID Slots



## A Summary

### A.1 Status

V&V Scientist	Jen Lauer
V&V Date (YYYY-MM-DD)	2006.04.10
V&V Edition	1
V&V Disposition and Status	OK
V&V Charge Time	8.19519996

### A.2 Comments