

V&V Reference Report

L2 ASCDS Version : 8.5.1

Observation 59772 - L2 Version 3
Chandra X-Ray Center

L2 Processing Date : Dec 18 2012

Contents

1	Front	2
2	OBI	3
2.1	OBI	3
2.1.1	Images	3
2.1.2	Bias	3
2.1.3	Parameters	4
2.1.4	Events	4
2.2	Compared Parameters	5
2.3	Star Slots	6
2.4	FID Slots	6
A	Summary	7
A.1	Status	7
A.2	Comments	7

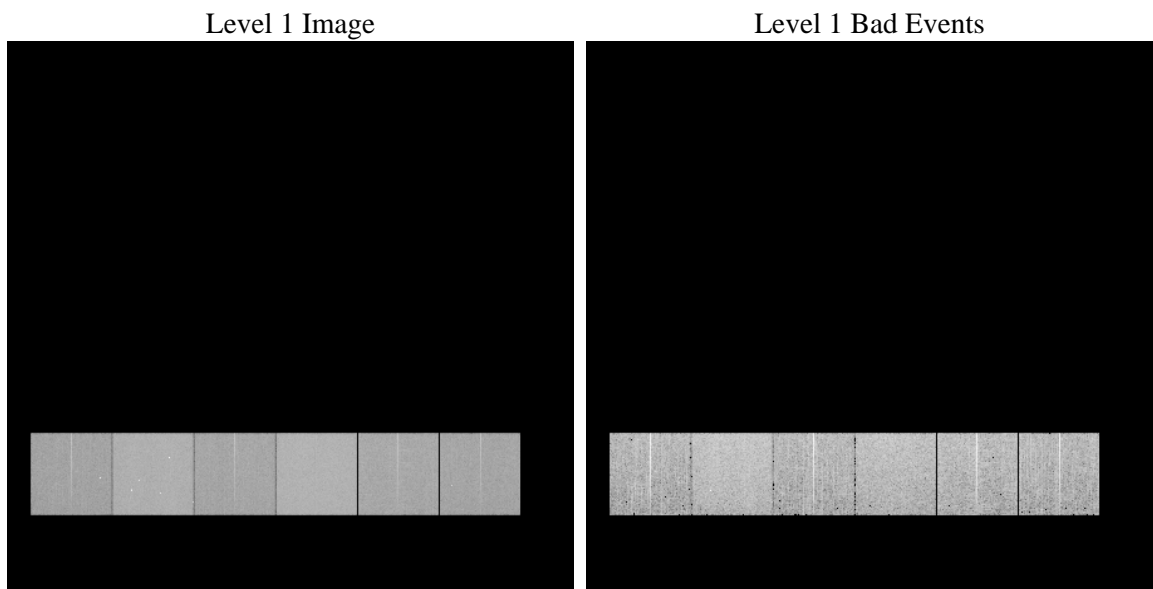
1 Front

seq_num	 	Sequence number
obs_id	59772	Observation id
title	ACIS-456789 diagnostics	Proposal title
observer	CHANDRA engineering request/realtime commanding	Principal investig
object	 	Source name
dtcycle	0	
cycle	P	events from which exps? Prim/Second/Both
ra_targ	0.0	Observer's specified target RA [deg]
dec_targ	0.0	Observer's specified target Dec [deg]
ra_nom	138.50578295542	Nominal RA [deg]
dec_nom	14.605160586927	Nominal Dec [deg]
roll_nom	253.92739092897	Nominal Roll [deg]
revision	3	Processing version of data
ontime	7800.5943442583	Sum of GTIs [s]
livetime	7701.8185217173	Livetime [s]
ontime4	4860.9043974578	Sum of GTIs [s]
ontime5	7800.553304255	Sum of GTIs [s]
ontime6	5194.7673895657	Sum of GTIs [s]
ontime7	7800.5943442583	Sum of GTIs [s]
ontime8	5385.903185457	Sum of GTIs [s]
ontime9	5107.3838636279	Sum of GTIs [s]
l2events	1063642	Number of level 2 events

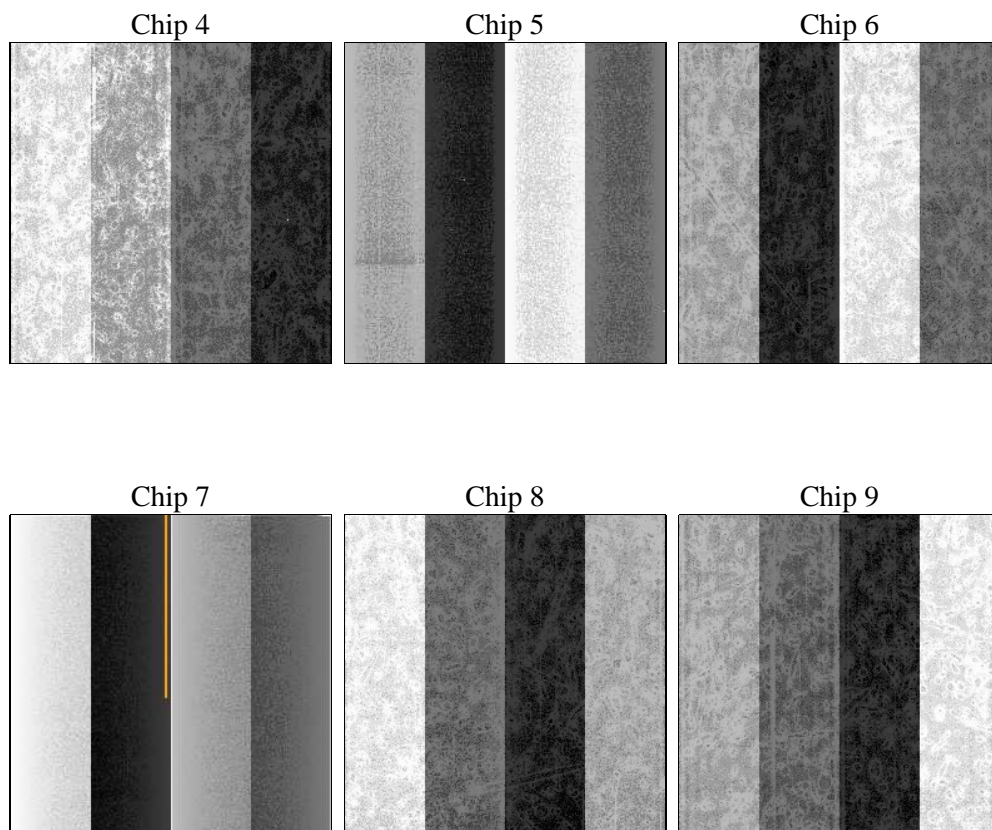
2 OBI

2.1 OBI

2.1.1 Images



2.1.2 Bias



2.1.3 Parameters

obi_num	0	Obi number	sched_exp_time	0.0	[s] Scheduled observation exposure time
ascdsver	8.5.1	Processing system revision	ontime	7800.5943442583	Sum of GTIs [s]
caldsver	4.5.5	 	ontime4	4860.9043974578	Sum of GTIs [s]
date	2012-12-18T06:43:45	Date and time of file creation	ontime5	7800.553304255	Sum of GTIs [s]
revision	3	Processing version of data	ontime6	5194.7673895657	Sum of GTIs [s]
			ontime7	7800.5943442583	Sum of GTIs [s]
			ontime8	5385.903185457	Sum of GTIs [s]
			ontime9	5107.3838636279	Sum of GTIs [s]
			l1events	1414337	Number of level 1 events

2.1.4 Events

	ccd 4	ccd 5	ccd 6	ccd 7	ccd 8	ccd 9		ccd 4	ccd 5	ccd 6	ccd 7	ccd 8	ccd 9
level 1 events	186625	285937	206774	309557	224909	200535	grade 0 events	81257	46756	85459	64292	92122	84110
rejected events	43104	57678	44220	50679	48881	43749		43%	16%	41%	20%	40%	41%
rejected %	23%	20%	21%	16%	21%	21%	grade 1 events	769	238	600	180	607	556
								0%	0%	0%	0%	0%	0%
							grade 2 events	22355	85717	27915	56650	30560	26352
								11%	29%	13%	18%	13%	13%
							grade 3 events	9750	12340	9908	24392	11215	9845
								5%	4%	4%	7%	4%	4%
							grade 4 events	9593	12203	9956	24475	11564	10062
								5%	4%	4%	7%	5%	5%
							grade 5 events	2447	8980	2635	8790	3417	2724
								1%	3%	1%	2%	1%	1%
							grade 6 events	20566	71243	29316	89069	30567	26417
								11%	24%	14%	28%	13%	13%
							grade 7 events	39888	48460	40985	41709	44857	40469
								21%	16%	19%	13%	19%	20%

2.2 Compared Parameters

Parameter	Planned	Actual	Parameter	Planned	Actual
Instrument	ACIS	ACIS	Obspar format version number	7	7
Detector	ACIS-456789	ACIS-456789	Obspar file type	PREDICTED	ACTUAL
Grating	NONE	NONE	Obspar update status	NONE	UPDATED
Data mode	FAINT	FAINT	On-chip summing requested	N	N
Observation mode	SECONDARY	SECONDARY	Subarray requested	NONE	NONE
[deg] Pointing RA	0	138.5057829554223	Alternating exposures requested	N	N
[deg] Pointing Dec	0	14.60516058692658	[s] Primary exposure time	3.2	3.2
[deg] Pointing Roll	0.0	253.9273909289735			
[mm] SIM focus pos	-0.684267	-0.6828225247311905			
[mm] SIM defocus	0	0.8505141146731063			
[mm] SIM translation stage pos	-190.132523	250.4635187648994			
[mm] SIM translation stage offset	0	-0.007540371344731511			
[s] Observation start time (MET)	226168765.423943	226168764.39894			
Observation start date	2005-03-02T16:39:25	2005-03-02T16:39:24			
[s] Observation end time (MET)	226208176.675728	226208175.65073			
Observation end date	2005-03-03T03:36:17	2005-03-03T03:36:15			
Read mode	TIMED	TIMED			

2.3 Star Slots

2.4 FID Slots

A Summary

A.1 Status

V&V Scientist	Beth Sundheim
V&V Date (YYYY-MM-DD)	2013.01.10
V&V Edition	1
V&V Disposition and Status	OK
V&V Charge Time	7.8005943442583

A.2 Comments