

# V&V Reference Report

## L2 ASCDS Version : 7.6.7.1

Observation 59492 - L2 Version 002  
Chandra X-Ray Center

L2 Processing Date : Mar 20 2006

## Contents

<b>1</b>	<b>Front</b>	<b>2</b>
<b>2</b>	<b>OBI</b>	<b>3</b>
2.1	OBI . . . . .	3
2.1.1	Images . . . . .	3
2.1.2	Bias . . . . .	3
2.1.3	Parameters . . . . .	4
2.1.4	Events . . . . .	4
2.2	Compared Parameters . . . . .	5
2.3	Aspect . . . . .	6
2.4	Star Slots . . . . .	8
2.5	FID Slots . . . . .	8
<b>A</b>	<b>Summary</b>	<b>9</b>
A.1	Status . . . . .	9
A.2	Comments . . . . .	9

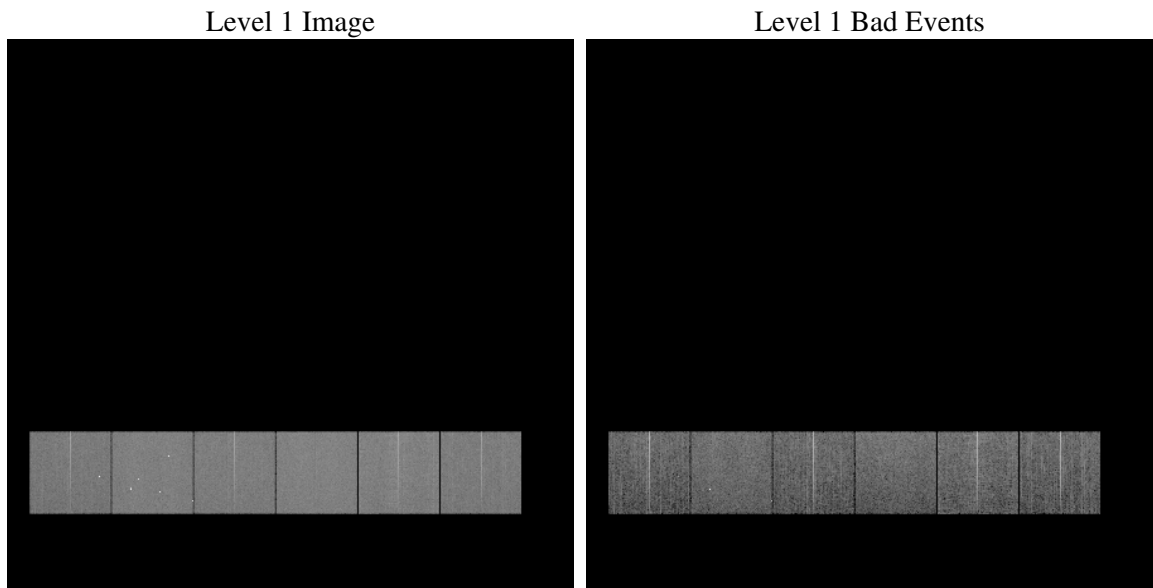
# 1 Front

seq_num	&#160
obs_id	59492
title	ACIS-456789 diagnostics
observer	CHANDRA engineering request/realtime commanding
object	&#160
dtcycle	0
cycle	P
ra_targ	0.0
dec_targ	0.0
ra_nom	305.00670454431
dec_nom	-0.62966195688035
roll_nom	245.67479425879
revision	2
ontime	8207.9999694228
livetime	8104.0653315458
ontime4	6999.1155076027
ontime5	8207.9999694228
ontime6	7644.0701857805
ontime7	8207.9999694228
ontime8	7883.9021801054
ontime9	7443.1293385625
l2events	1034999

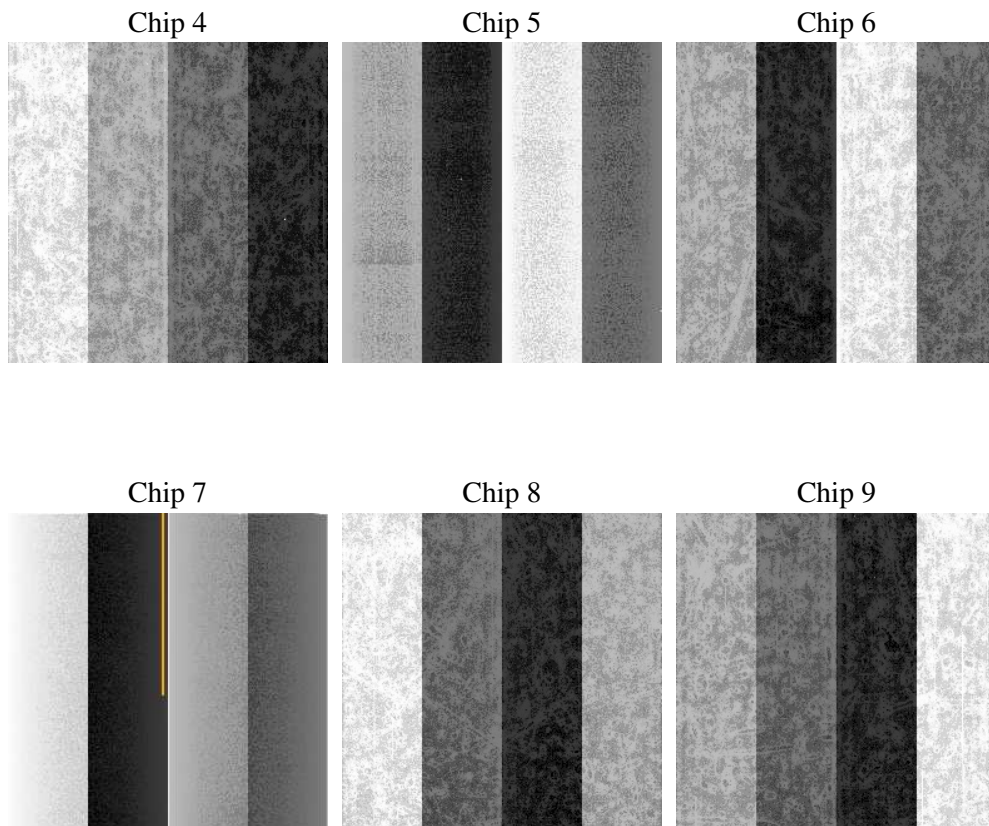
## 2 OBI

### 2.1 OBI

#### 2.1.1 Images



#### 2.1.2 Bias



### 2.1.3 Parameters

obi_num	0
ascdsver	7.6.7.1
caldbver	3.2.1
date	2006-03-20T22:26:00
revision	2

sched_exp_time	0.0
ontime	8277.5346295536
ontime4	7065.4091874063
ontime5	8277.5346295536
ontime6	7707.1228853166
ontime7	8277.5346295536
ontime8	7953.4368402362
ontime9	7512.6639986932
l1events	1486682

### 2.1.4 Events

	ccd 4	ccd 5	ccd 6	ccd 7	ccd 8	ccd 9
level 1 events	216359	259322	243296	268098	267068	232539
rejected events	58376	66833	59904	64002	68689	60100
rejected %	26%	25%	24%	23%	25%	25%

	ccd 4	ccd 5	ccd 6	ccd 7	ccd 8	ccd 9
grade 0 events	92996	23710	99900	33379	107124	95388
	42%	9%	41%	12%	40%	41%
grade 1 events	712	238	494	98	586	576
	0%	0%	0%	0%	0%	0%
grade 2 events	24902	88231	32103	63053	35080	29579
	11%	34%	13%	23%	13%	12%
grade 3 events	10527	5765	11494	14105	13289	11285
	4%	2%	4%	5%	4%	4%
grade 4 events	10612	5578	11740	13964	13177	11259
	4%	2%	4%	5%	4%	4%
grade 5 events	3183	6573	3659	7013	4611	3900
	1%	2%	1%	2%	1%	1%
grade 6 events	20454	70915	29711	81264	31371	26623
	9%	27%	12%	30%	11%	11%
grade 7 events	52973	58312	54195	55222	61830	53929
	24%	22%	22%	20%	23%	23%

## 2.2 Compared Parameters

Parameter	Planned	Actual	Parameter	Planned	Actual
Instrument	ACIS	ACIS	Obspar format version number	6	6
Detector	ACIS-456789	ACIS-456789	Obspar file type	PREDICTED	ACTUAL
Grating	NONE	NONE	Obspar update status	NONE	UPDATED
Data mode	FAINT	FAINT	On-chip summing requested	N	N
Observation mode	SECONDARY	SECONDARY	Subarray requested	NONE	NONE
Pointing RA	0	305.006704544309	Alternating exposures requested	N	N
Pointing Dec	0	-0.629661956880351	Primary exposure time	3.2	3.2
Pointing Roll	0.0	245.6747942587866			
SIM focus pos (mm)	-0.684267	-0.6828225247311905			
SIM defocus (mm)	0	0.8505141146731063			
SIM translation stage pos (mm)	-190.132523	250.466033080201			
SIM translation stage offset (mm)	0	-0.01005468664627074			
Observation start time	241060277.702932	241060276.67791			
Observation start date	2005-08-22T01:11:18	2005-08-22T01:11:16			
Observation end time	241084149.954028	241084148.92901			
Observation end date	2005-08-22T07:49:10	2005-08-22T07:49:08			
Read mode	TIMED	TIMED			

## 2.3 Aspect



## **2.4 Star Slots**

## **2.5 FID Slots**



# A Summary

## A.1 Status

V&V Scientist	Joy Nichols
V&V Date (YYYY-MM-DD)	2006.03.21
V&V Edition	1
V&V Disposition and Status	OK
V&V Charge Time	8.20799996

## A.2 Comments

Significant periods of non-GTI on front-illuminated chips.