

V&V Reference Report

L2 ASCDS Version : 7.6.7.1

Observation 59482 - L2 Version 002
Chandra X-Ray Center

L2 Processing Date : Mar 23 2006

Contents

1	Front	2
2	OBI	3
2.1	OBI	3
2.1.1	Images	3
2.1.2	Bias	3
2.1.3	Parameters	4
2.1.4	Events	4
2.2	Compared Parameters	5
2.3	Aspect	6
2.4	Star Slots	8
2.5	FID Slots	8
A	Summary	9
A.1	Status	9
A.2	Comments	9

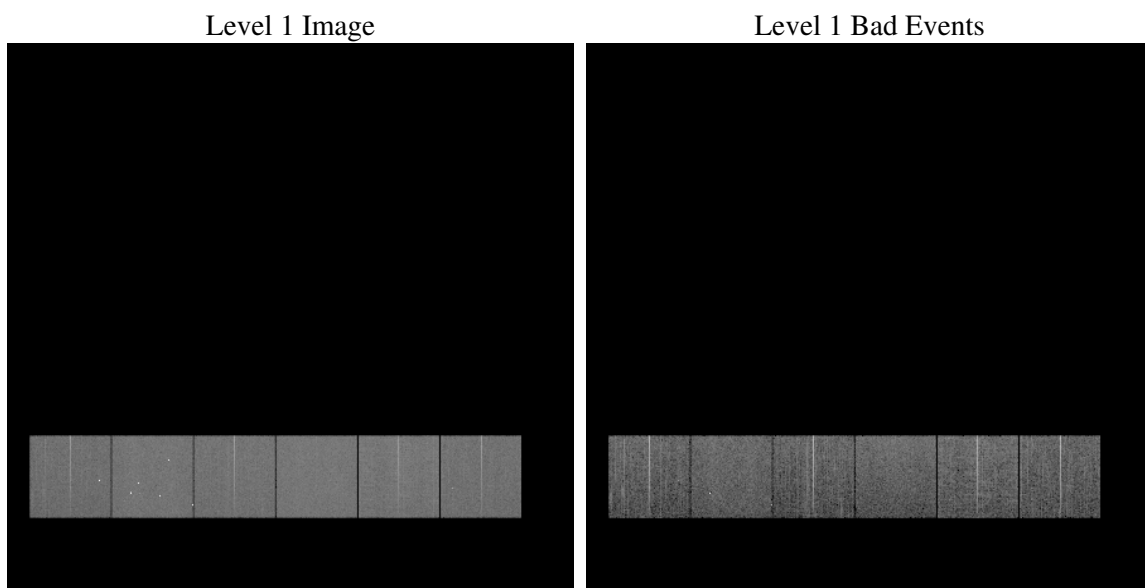
1 Front

seq_num	
obs_id	59482
title	ACIS-456789 diagnostics
observer	CHANDRA engineering request/realtime commanding
object	
dtcycle	0
cycle	P
ra_targ	0.0
dec_targ	0.0
ra_nom	339.95811038895
dec_nom	21.981292002973
roll_nom	181.63692116303
revision	2
ontime	8278.3999691606
livetime	8173.573884097
ontime4	7199.153998971
ontime5	8278.3999691606
ontime6	7766.3251722455
ontime7	8278.3999691606
ontime8	8002.9167441726
ontime9	7552.4207218289
l2events	1025709

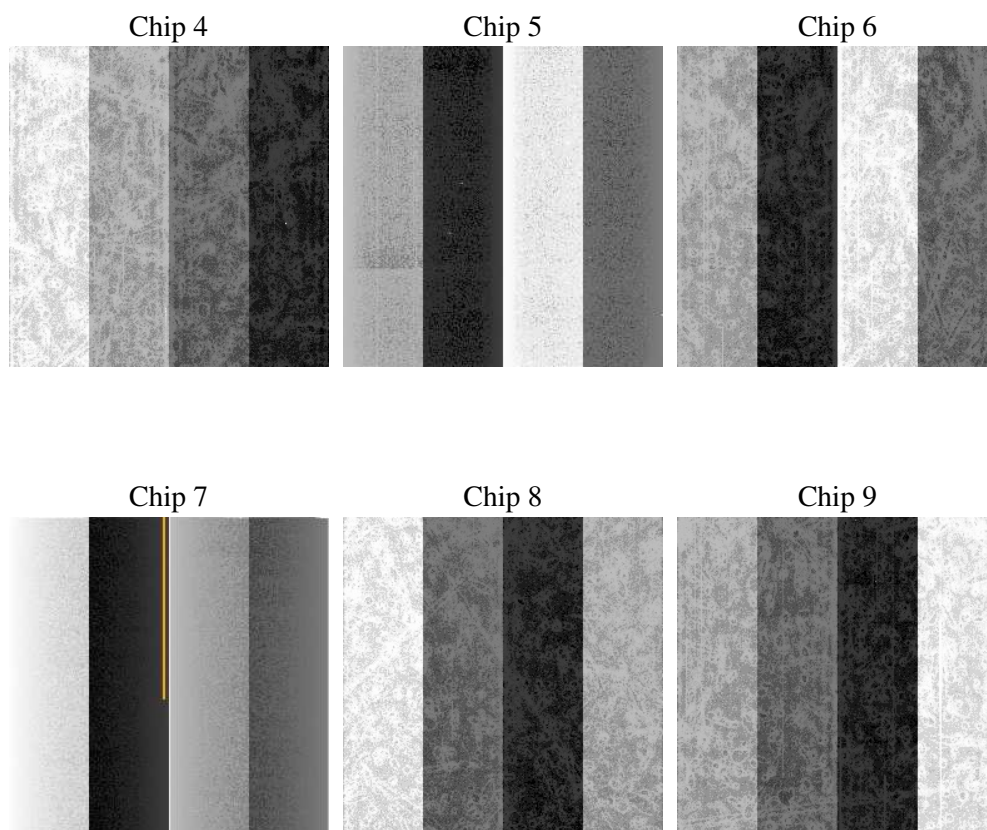
2 OBI

2.1 OBI

2.1.1 Images



2.1.2 Bias



2.1.3 Parameters

obi_num	1
ascdsver	7.6.7.1
caldsver	3.2.1
date	2006-03-24T00:58:36
revision	2

sched_exp_time	0.0
ontime	8280.7769001722
ontime4	7201.5309299827
ontime5	8280.7769001722
ontime6	7768.7021032572
ontime7	8280.7769001722
ontime8	8005.2936751842
ontime9	7554.7976528406
l1events	1487078

2.1.4 Events

	ccd 4	ccd 5	ccd 6	ccd 7	ccd 8	ccd 9
level 1 events	220331	261698	243516	264898	265201	231434
rejected events	62288	65171	61364	62545	69509	61143
rejected %	28%	24%	25%	23%	26%	26%

	ccd 4	ccd 5	ccd 6	ccd 7	ccd 8	ccd 9
grade 0 events	92758	25220	98104	31819	105043	93612
	42%	9%	40%	12%	39%	40%
grade 1 events	794	144	552	99	583	565
	0%	0%	0%	0%	0%	0%
grade 2 events	24062	87187	31967	62542	34520	28890
	10%	33%	13%	23%	13%	12%
grade 3 events	10677	5610	11253	13463	13014	11013
	4%	2%	4%	5%	4%	4%
grade 4 events	10474	5519	11175	13153	13038	10805
	4%	2%	4%	4%	4%	4%
grade 5 events	3290	6321	3452	6932	4603	3704
	1%	2%	1%	2%	1%	1%
grade 6 events	20158	73064	29723	81459	30169	26043
	9%	27%	12%	30%	11%	11%
grade 7 events	58118	58633	57290	55431	64231	56802
	26%	22%	23%	20%	24%	24%

2.2 Compared Parameters

Parameter	Planned	Actual	Parameter	Planned	Actual
Instrument	ACIS	ACIS	Obspar format version number	6	6
Detector	ACIS-456789	ACIS-456789	Obspar file type	PREDICTED	ACTUAL
Grating	NONE	NONE	Obspar update status	NONE	UPDATED
Data mode	FAINT	FAINT	On-chip summing requested	N	N
Observation mode	SECONDARY	SECONDARY	Subarray requested	NONE	NONE
Pointing RA	0	339.9581103889525	Alternating exposures requested	N	N
Pointing Dec	0	21.98129200297284	Primary exposure time	3.2	3.2
Pointing Roll	0.0	181.6369211630305			
SIM focus pos (mm)	-0.684267	-0.6828225247311905			
SIM defocus (mm)	0	0.8505141146731063			
SIM translation stage pos (mm)	-190.132523	250.466033080201			
SIM translation stage offset (mm)	0	-0.01005468664627074			
Observation start time	241971457.644702	241971456.61972			
Observation start date	2005-09-01T14:17:38	2005-09-01T14:17:36			
Observation end time	241995038.795784	241995037.7708			
Observation end date	2005-09-01T20:50:39	2005-09-01T20:50:37			
Read mode	TIMED	TIMED			

2.3 Aspect

2.4 Star Slots

2.5 FID Slots

A Summary

A.1 Status

V&V Scientist	Jen Lauer
V&V Date (YYYY-MM-DD)	2006.03.24
V&V Edition	1
V&V Disposition and Status	OK
V&V Charge Time	8.27839996

A.2 Comments

ACIS focal plane temperature was above calibration limits for the last 6 ksec of the observation