

V&V Reference Report

L2 ASCDS Version : 8.4.3

Observation 58932 - L2 Version 2
Chandra X-Ray Center

L2 Processing Date : Apr 3 2012

Contents

1	Front	2
2	OBI	3
2.1	OBI	3
2.1.1	Images	3
2.1.2	Bias	3
2.1.3	Parameters	4
2.1.4	Events	4
2.2	Compared Parameters	5
2.3	Star Slots	6
2.4	FID Slots	6
A	Summary	7
A.1	Status	7
A.2	Comments	7

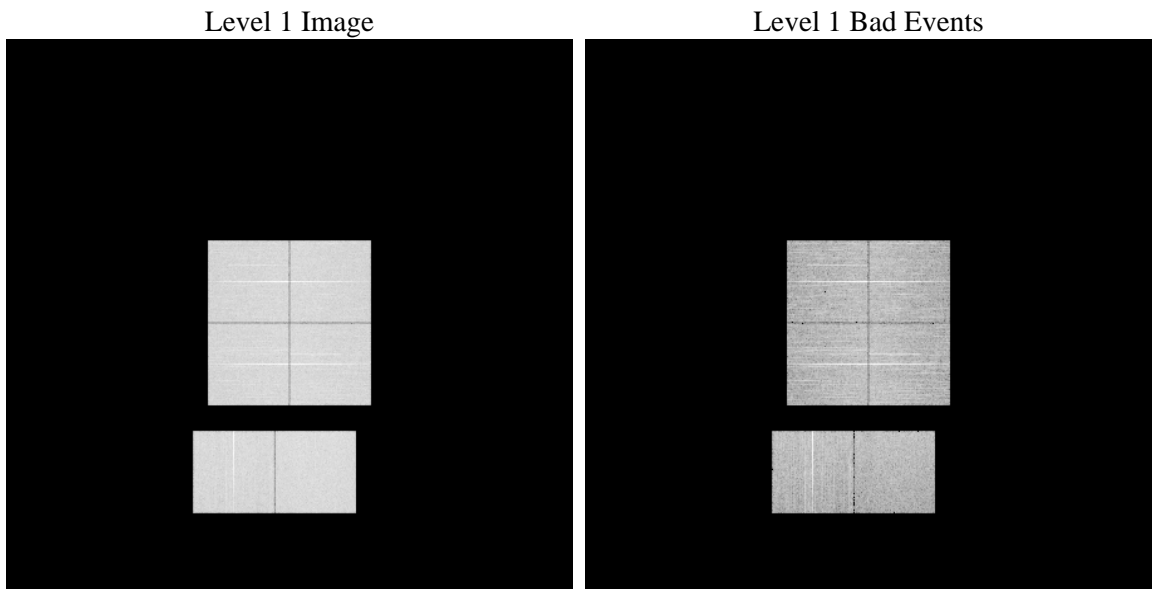
1 Front

seq_num	 	Sequence number
obs_id	58932	Observation id
title	ACIS-012367 diagnostics	Proposal title
observer	CHANDRA engineering request/realtime commanding	Principal investig
object	 	Source name
dtcycle	0	
cycle	P	events from which exps? Prim/Second/Both
ra_targ	0.0	Observer's specified target RA [deg]
dec_targ	0.0	Observer's specified target Dec [deg]
ra_nom	247.98626097676	Nominal RA [deg]
dec_nom	3.1761299793829	Nominal Dec [deg]
roll_nom	202.70581431831	Nominal Roll [deg]
revision	2	Processing version of data
ontime	8270.4903097153	Sum of GTIs [s]
livetime	8165.7643815223	Livetime [s]
ontime0	8270.449269712	Sum of GTIs [s]
ontime1	8267.1673290431	Sum of GTIs [s]
ontime2	8270.3671897054	Sum of GTIs [s]
ontime3	8270.5313497186	Sum of GTIs [s]
ontime6	8270.3261497319	Sum of GTIs [s]
ontime7	8270.4903097153	Sum of GTIs [s]
l2events	916871	Number of level 2 events

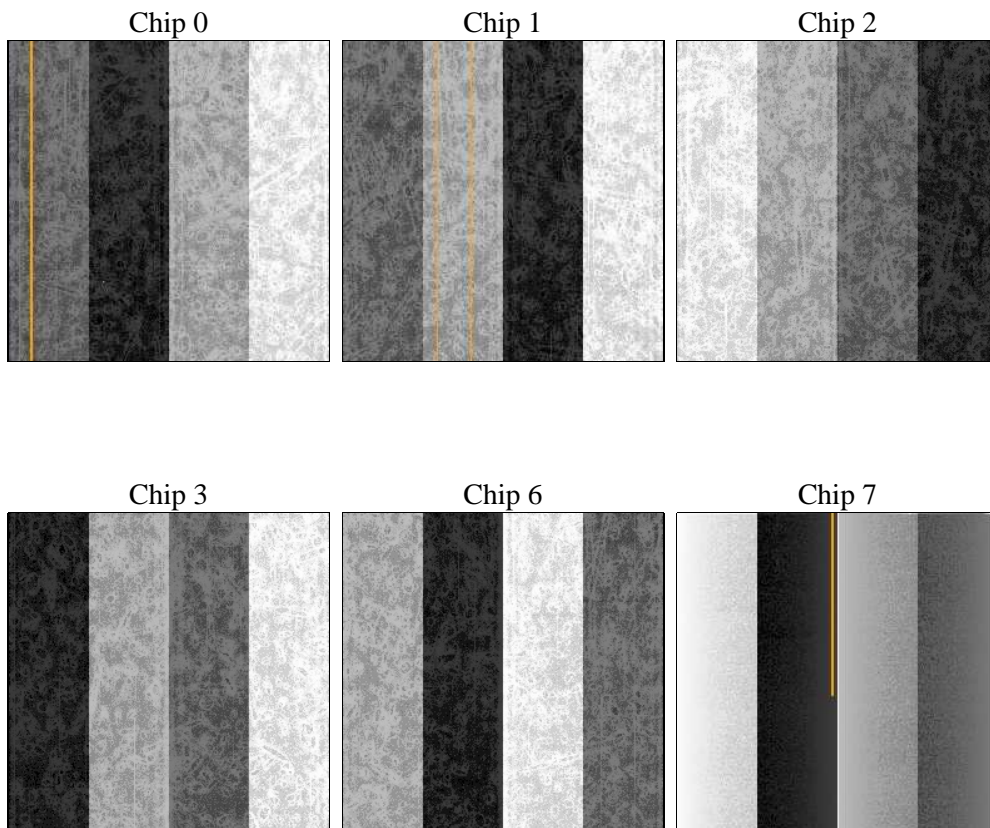
2 OBI

2.1 OBI

2.1.1 Images



2.1.2 Bias



2.1.3 Parameters

obi_num	0	Obi number	sched_exp_time	0.0	[s] Scheduled observation exposure time
ascdsver	8.4.3	Processing system revision	ontime	8270.4903097153	Sum of GTIs [s]
caldsver	4.4.9	 	ontime0	8270.449269712	Sum of GTIs [s]
date	2012-04-03T11:52:09	Date and time of file creation	ontime1	8267.1673290431	Sum of GTIs [s]
revision	2	Processing version of data	ontime2	8270.3671897054	Sum of GTIs [s]
			ontime3	8270.5313497186	Sum of GTIs [s]
			ontime6	8270.3261497319	Sum of GTIs [s]
			ontime7	8270.4903097153	Sum of GTIs [s]
			l1events	1381817	Number of level 1 events

2.1.4 Events

	ccd 0	ccd 1	ccd 2	ccd 3	ccd 6	ccd 7		ccd 0	ccd 1	ccd 2	ccd 3	ccd 6	ccd 7
level 1 events	222152	222174	228387	230250	232191	246663	grade 0 events	84119	83526	86619	86441	86287	41116
rejected events	68419	67643	72911	74952	71509	60842		37%	37%	37%	37%	37%	16%
rejected %	30%	30%	31%	32%	30%	24%	grade 1 events	584	479	670	627	473	187
								0%	0%	0%	0%	0%	0%
							grade 2 events	26656	27831	26025	26420	27888	40786
								11%	12%	11%	11%	12%	16%
							grade 3 events	10028	9895	10247	10253	10090	17861
								4%	4%	4%	4%	4%	7%
							grade 4 events	10102	9863	10256	10356	10066	17850
								4%	4%	4%	4%	4%	7%
							grade 5 events	3725	3941	3647	4304	4062	10159
								1%	1%	1%	1%	1%	4%
							grade 6 events	22889	23471	22376	21885	26417	68271
								10%	10%	9%	9%	11%	27%
							grade 7 events	64049	63168	68547	69964	66908	50433
								28%	28%	30%	30%	28%	20%

2.2 Compared Parameters

Parameter	Planned	Actual
Instrument	ACIS	ACIS
Detector	ACIS-012367	ACIS-012367
Grating	NONE	NONE
Data mode	FAINT	FAINT
Observation mode	SECONDARY	SECONDARY
[deg] Pointing RA	0	247.9862609767603
[deg] Pointing Dec	0	3.176129979382927
[deg] Pointing Roll	0.0	202.7058143183139
[mm] SIM focus pos	-0.782348	-0.7809083437167272
[mm] SIM defocus	0	0.7524282956875696
[mm] SIM translation stage pos	-233.592463	250.466033080201
[mm] SIM translation stage offset	0	-0.01005468664627074
[s] Observation start time (MET)	266417727.227875	266417726.20288
Observation start date	2006-06-11T12:55:27	2006-06-11T12:55:26
[s] Observation end time (MET)	266440689.278949	266440688.25395
Observation end date	2006-06-11T19:18:09	2006-06-11T19:18:08
Read mode	TIMED	TIMED

Parameter	Planned	Actual
Obspar format version number	7	7
Obspar file type	PREDICTED	ACTUAL
Obspar update status	NONE	UPDATED
On-chip summing requested	N	N
Subarray requested	NONE	NONE
Alternating exposures requested	N	N
[s] Primary exposure time	3.2	3.2

2.3 Star Slots

2.4 FID Slots

A Summary

A.1 Status

V&V Scientist	Jen Lauer
V&V Date (YYYY-MM-DD)	2012.04.04
V&V Edition	1
V&V Disposition and Status	OK
V&V Charge Time	8.2704903097153

A.2 Comments