

V&V Reference Report

L2 ASCDS Version : 8.4.3.1

Observation 58622 - L2 Version 2
Chandra X-Ray Center

L2 Processing Date : Apr 16 2012

Contents

1	Front	2
2	OBI	3
2.1	OBI	3
2.1.1	Images	3
2.1.2	Bias	3
2.1.3	Parameters	4
2.1.4	Events	4
2.2	Compared Parameters	5
2.3	Star Slots	6
2.4	FID Slots	6
A	Summary	7
A.1	Status	7
A.2	Comments	7

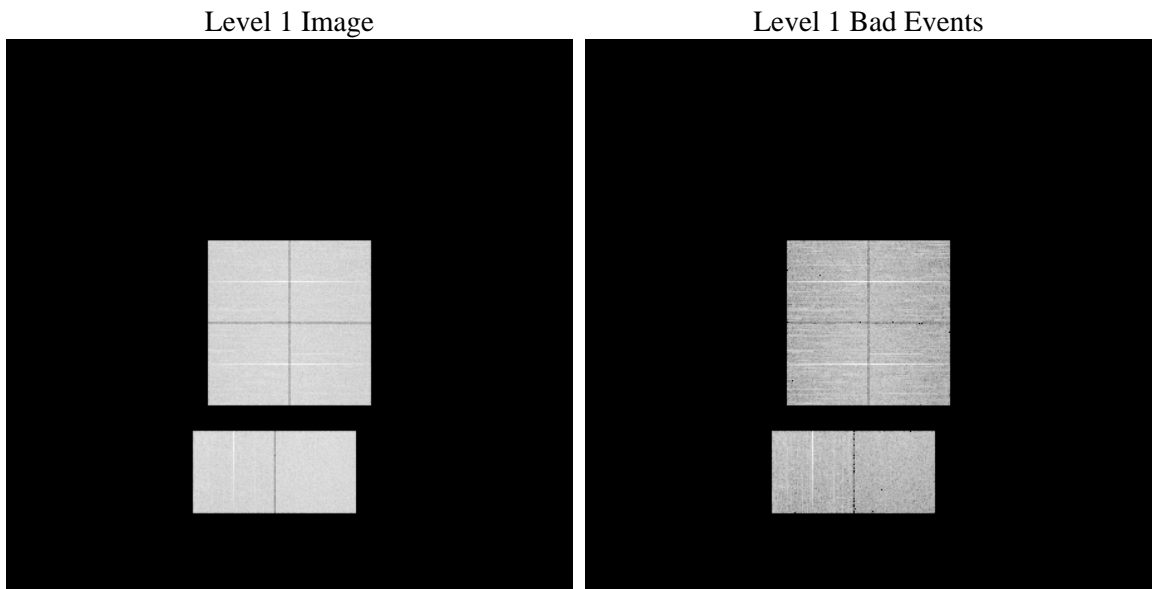
1 Front

seq_num	 	Sequence number
obs_id	58622	Observation id
title	ACIS-012367 diagnostics	Proposal title
observer	CHANDRA engineering request/realtime commanding	Principal investig
object	 	Source name
dtcycle	0	
cycle	P	events from which exps? Prim/Second/Both
ra_targ	0.0	Observer's specified target RA [deg]
dec_targ	0.0	Observer's specified target Dec [deg]
ra_nom	84.989033622277	Nominal RA [deg]
dec_nom	34.972698142795	Nominal Dec [deg]
roll_nom	218.82644361479	Nominal Roll [deg]
revision	2	Processing version of data
ontime	7779.1999710798	Sum of GTIs [s]
livetime	7680.6950569741	Livetime [s]
ontime0	7779.1999710798	Sum of GTIs [s]
ontime1	7779.1999710798	Sum of GTIs [s]
ontime2	7779.1999710798	Sum of GTIs [s]
ontime3	7779.1999710798	Sum of GTIs [s]
ontime6	7779.1999710798	Sum of GTIs [s]
ontime7	7779.1999710798	Sum of GTIs [s]
l2events	791902	Number of level 2 events

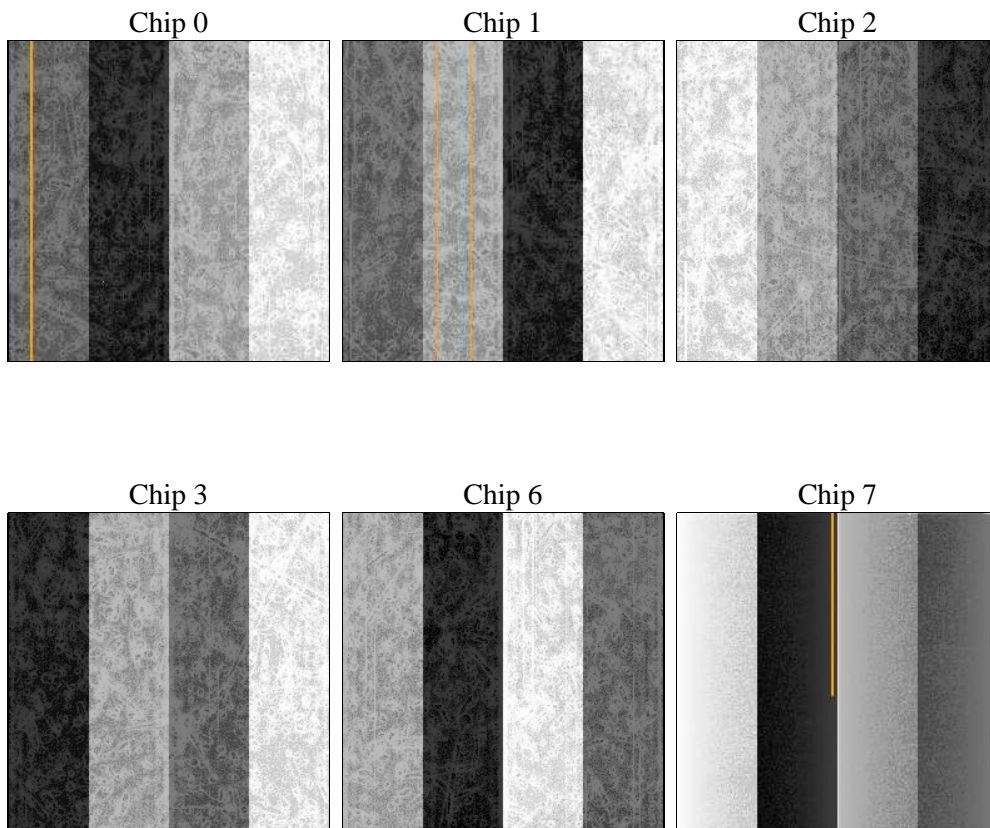
2 OBI

2.1 OBI

2.1.1 Images



2.1.2 Bias



2.1.3 Parameters

obi_num	0	Obi number	sched_exp_time	0.0	[s] Scheduled observation exposure time
ascdsver	8.4.3.1	Processing system revision	ontime	7779.1999710798	Sum of GTIs [s]
caldsver	4.4.9	 	ontime0	7779.1999710798	Sum of GTIs [s]
date	2012-04-16T06:41:57	Date and time of file creation	ontime1	7779.1999710798	Sum of GTIs [s]
revision	2	Processing version of data	ontime2	7779.1999710798	Sum of GTIs [s]
			ontime3	7779.1999710798	Sum of GTIs [s]
			ontime6	7779.1999710798	Sum of GTIs [s]
			ontime7	7779.1999710798	Sum of GTIs [s]
			l1events	1213223	Number of level 1 events

2.1.4 Events

	ccd 0	ccd 1	ccd 2	ccd 3	ccd 6	ccd 7		ccd 0	ccd 1	ccd 2	ccd 3	ccd 6	ccd 7
level 1 events	194350	193616	202659	198327	204934	219337	grade 0 events	72032	71264	74283	74540	73497	36534
rejected events	62062	60163	68935	64212	66555	56803		37%	36%	36%	37%	35%	16%
rejected %	31%	31%	34%	32%	32%	25%	grade 1 events	476	411	504	532	444	160
								0%	0%	0%	0%	0%	0%
							grade 2 events	23215	24455	22636	22887	24477	35513
								11%	12%	11%	11%	11%	16%
							grade 3 events	8474	8530	8851	8717	8708	15722
								4%	4%	4%	4%	4%	7%
							grade 4 events	8631	8642	8738	8908	8798	15696
								4%	4%	4%	4%	4%	7%
							grade 5 events	3582	3649	3433	3906	3943	9756
								1%	1%	1%	1%	1%	4%
							grade 6 events	19936	20562	19216	19063	22899	59069
								10%	10%	9%	9%	11%	26%
							grade 7 events	58004	56103	64998	59774	62168	46887
								29%	28%	32%	30%	30%	21%

2.2 Compared Parameters

Parameter	Planned	Actual	Parameter	Planned	Actual
Instrument	ACIS	ACIS	Obspar format version number	7	7
Detector	ACIS-012367	ACIS-012367	Obspar file type	PREDICTED	ACTUAL
Grating	NONE	NONE	Obspar update status	NONE	UPDATED
Data mode	FAINT	FAINT	On-chip summing requested	N	N
Observation mode	SECONDARY	SECONDARY	Subarray requested	NONE	NONE
[deg] Pointing RA	0	84.9890336222773	Alternating exposures requested	N	N
[deg] Pointing Dec	0	34.97269814279511	[s] Primary exposure time	3.2	3.2
[deg] Pointing Roll	0.0	218.8264436147915			
[mm] SIM focus pos	-0.782348	-0.6828225247311905			
[mm] SIM defocus	0	0.8505141146731063			
[mm] SIM translation stage pos	-233.592463	250.466033080201			
[mm] SIM translation stage offset	0	-0.01005468664627074			
[s] Observation start time (MET)	283511378.332115	283511377.30711			
Observation start date	2006-12-26T09:09:38	2006-12-26T09:09:37			
[s] Observation end time (MET)	283523707.032699	283523706.00769			
Observation end date	2006-12-26T12:35:07	2006-12-26T12:35:06			
Read mode	TIMED	TIMED			

2.3 Star Slots

2.4 FID Slots

A Summary

A.1 Status

V&V Scientist	Beth Sundheim
V&V Date (YYYY-MM-DD)	2012.04.18
V&V Edition	1
V&V Disposition and Status	OK
V&V Charge Time	7.7791999710798

A.2 Comments