

V&V Reference Report

L2 ASCDS Version : 8.4.4

Observation 58252 - L2 Version 2
Chandra X-Ray Center

L2 Processing Date : Apr 30 2012

Contents

1	Front	2
2	OBI	3
2.1	OBI	3
2.1.1	Images	3
2.1.2	Bias	3
2.1.3	Parameters	4
2.1.4	Events	4
2.2	Compared Parameters	5
2.3	Star Slots	6
2.4	FID Slots	6
A	Summary	7
A.1	Status	7
A.2	Comments	7

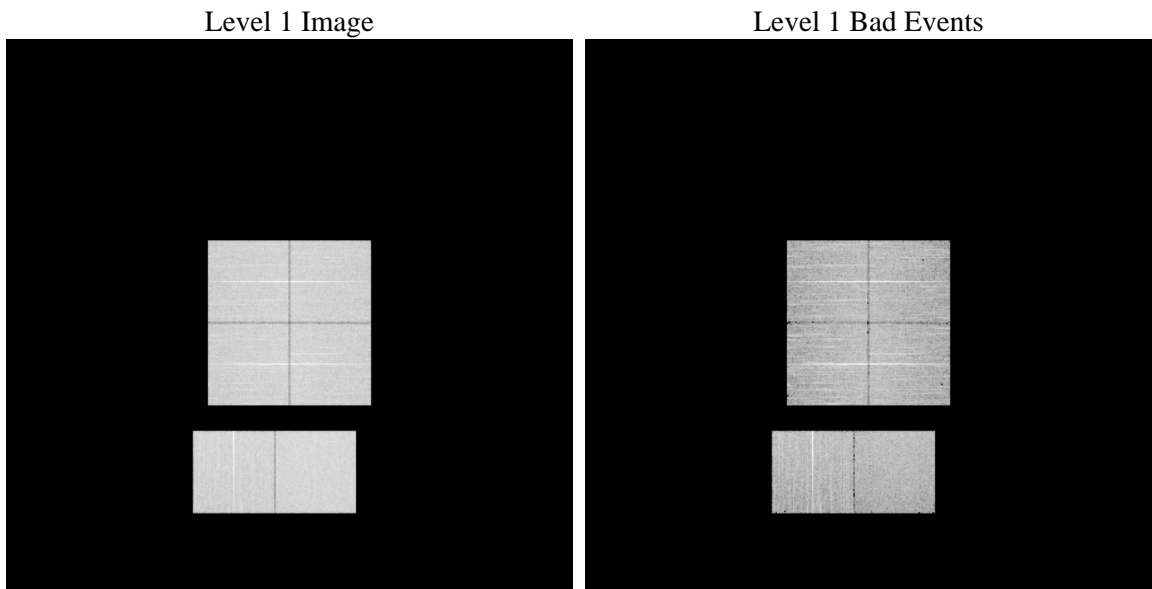
1 Front

seq_num	 	Sequence number
obs_id	58252	Observation id
title	ACIS-012367 diagnostics	Proposal title
observer	CHANDRA engineering request/realtime commanding	Principal investig
object	 	Source name
dtcycle	0	
cycle	P	events from which exps? Prim/Second/Both
ra_targ	0.0	Observer's specified target RA [deg]
dec_targ	0.0	Observer's specified target Dec [deg]
ra_nom	329.97627603783	Nominal RA [deg]
dec_nom	16.682936202726	Nominal Dec [deg]
roll_nom	185.1962819198	Nominal Roll [deg]
revision	2	Processing version of data
ontime	7791.9999710321	Sum of GTIs [s]
livetime	7693.3329756198	Livetime [s]
ontime0	7788.7589707375	Sum of GTIs [s]
ontime1	7791.9999710321	Sum of GTIs [s]
ontime2	7791.9999710321	Sum of GTIs [s]
ontime3	7791.9999710321	Sum of GTIs [s]
ontime6	7791.9999710321	Sum of GTIs [s]
ontime7	7791.9999710321	Sum of GTIs [s]
l2events	657108	Number of level 2 events

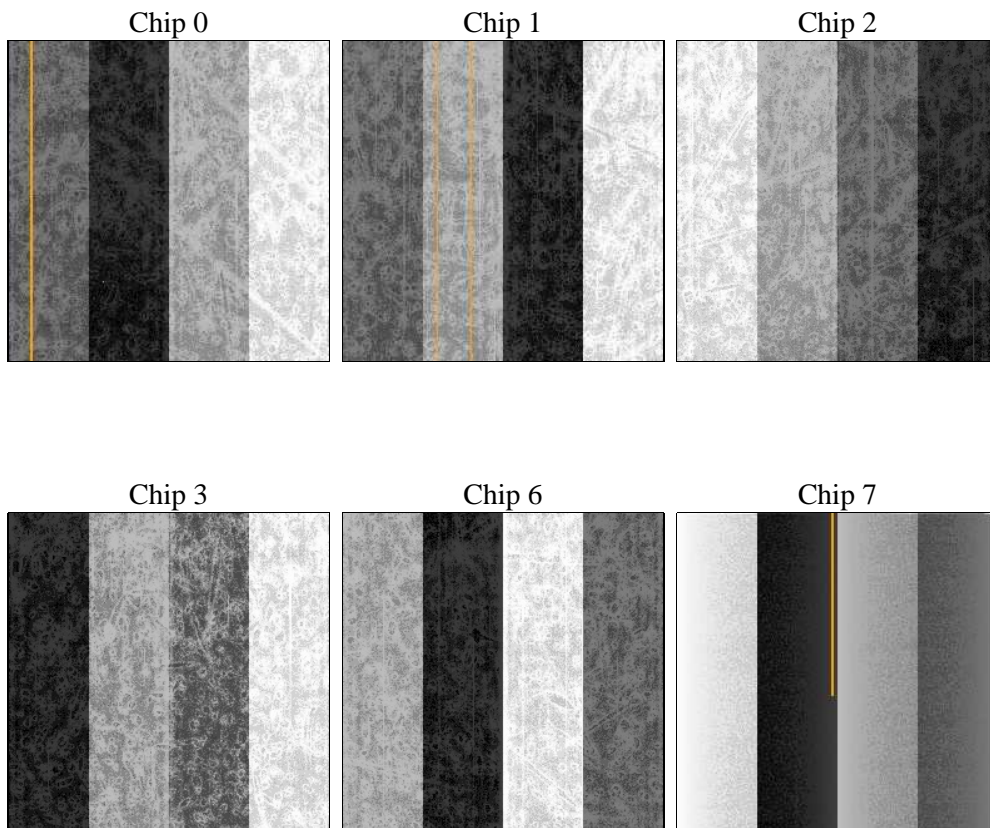
2 OBI

2.1 OBI

2.1.1 Images



2.1.2 Bias



2.1.3 Parameters

obi_num	0	Obi number	sched_exp_time	0.0	[s] Scheduled observation exposure time
ascdsver	8.4.4	Processing system revision	ontime	7791.9999710321	Sum of GTIs [s]
caldsver	4.4.9	 	ontime0	7788.7589707375	Sum of GTIs [s]
date	2012-04-30T02:22:17	Date and time of file creation	ontime1	7791.9999710321	Sum of GTIs [s]
revision	2	Processing version of data	ontime2	7791.9999710321	Sum of GTIs [s]
			ontime3	7791.9999710321	Sum of GTIs [s]
			ontime6	7791.9999710321	Sum of GTIs [s]
			ontime7	7791.9999710321	Sum of GTIs [s]
			l1events	1108403	Number of level 1 events

2.1.4 Events

	ccd 0	ccd 1	ccd 2	ccd 3	ccd 6	ccd 7		ccd 0	ccd 1	ccd 2	ccd 3	ccd 6	ccd 7
level 1 events	177556	175038	181414	180755	187710	205930	grade 0 events	59035	58630	59878	60379	60480	29711
rejected events	68635	65444	72685	71668	74316	62522		33%	33%	33%	33%	32%	14%
rejected %	38%	37%	40%	39%	39%	30%	grade 1 events	414	339	466	477	385	165
								0%	0%	0%	0%	0%	0%
							grade 2 events	19318	20071	18523	18540	19916	31307
								10%	11%	10%	10%	10%	15%
							grade 3 events	7274	7232	7296	7286	7373	13636
								4%	4%	4%	4%	3%	6%
							grade 4 events	7173	7182	7353	7299	7240	13855
								4%	4%	4%	4%	3%	6%
							grade 5 events	3712	3945	3548	4117	4203	10300
								2%	2%	1%	2%	2%	5%
							grade 6 events	16121	16479	15679	15583	18385	54899
								9%	9%	8%	8%	9%	26%
							grade 7 events	64509	61160	68671	67074	69728	52057
								36%	34%	37%	37%	37%	25%

2.2 Compared Parameters

Parameter	Planned	Actual	Parameter	Planned	Actual
Instrument	ACIS	ACIS	Obspar format version number	7	7
Detector	ACIS-012367	ACIS-012367	Obspar file type	PREDICTED	ACTUAL
Grating	NONE	NONE	Obspar update status	NONE	UPDATED
Data mode	FAINT	FAINT	On-chip summing requested	N	N
Observation mode	SECONDARY	SECONDARY	Subarray requested	NONE	NONE
[deg] Pointing RA	0	329.9762760378251	Alternating exposures requested	N	N
[deg] Pointing Dec	0	16.68293620272638	[s] Primary exposure time	3.2	3.2
[deg] Pointing Roll	0.0	185.1962819197976			
[mm] SIM focus pos	-0.782348	-0.6828225247311905			
[mm] SIM defocus	0	0.8505141146731063			
[mm] SIM translation stage pos	-233.592463	250.466033080201			
[mm] SIM translation stage offset	0	-0.01005468664627074			
[s] Observation start time (MET)	304304738.423762	304304737.39876			
Observation start date	2007-08-24T01:05:38	2007-08-24T01:05:37			
[s] Observation end time (MET)	304340871.725498	304340870.7005			
Observation end date	2007-08-24T11:07:52	2007-08-24T11:07:50			
Read mode	TIMED	TIMED			

2.3 Star Slots

2.4 FID Slots

A Summary

A.1 Status

V&V Scientist	Beth Sundheim
V&V Date (YYYY-MM-DD)	2012.05.02
V&V Edition	1
V&V Disposition and Status	OK
V&V Charge Time	7.7919999710321

A.2 Comments