

V&V Reference Report

L2 ASCDS Version : 8.4.4

Observation 58202 - L2 Version 2
Chandra X-Ray Center

L2 Processing Date : May 1 2012

Contents

1	Front	2
2	OBI	3
2.1	OBI	3
2.1.1	Images	3
2.1.2	Bias	3
2.1.3	Parameters	4
2.1.4	Events	4
2.2	Compared Parameters	5
2.3	Star Slots	6
2.4	FID Slots	6
A	Summary	7
A.1	Status	7
A.2	Comments	7

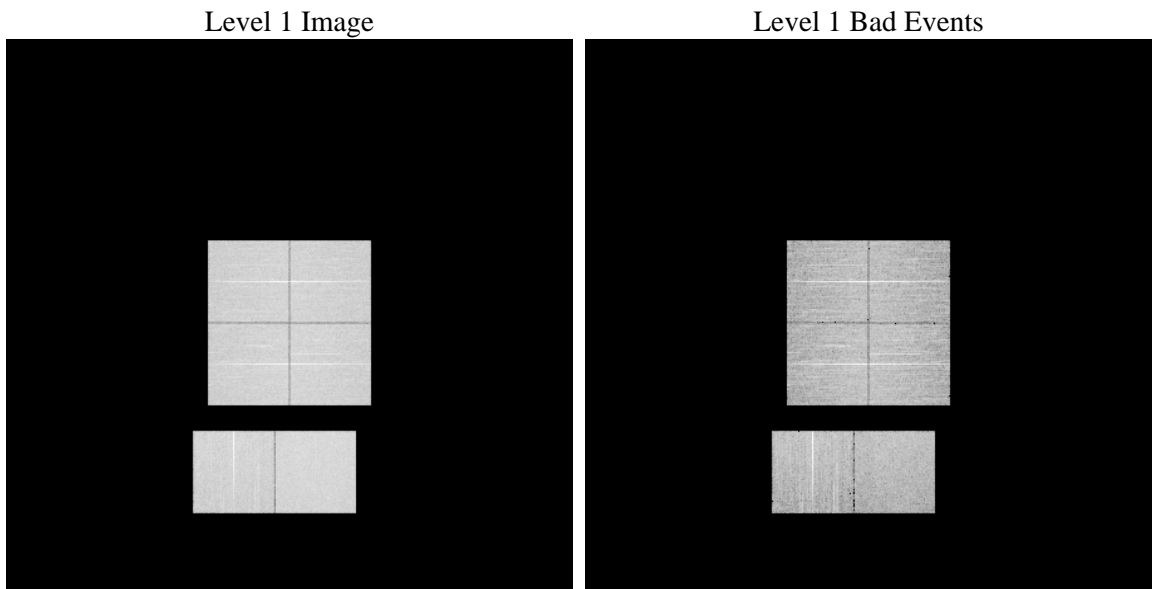
1 Front

seq_num	 	Sequence number
obs_id	58202	Observation id
title	ACIS-012367 diagnostics	Proposal title
observer	CHANDRA engineering request/realtime commanding	Principal investig
object	 	Source name
dtcycle	0	
cycle	P	events from which exps? Prim/Second/Both
ra_targ	0.0	Observer's specified target RA [deg]
dec_targ	0.0	Observer's specified target Dec [deg]
ra_nom	10.015318336598	Nominal RA [deg]
dec_nom	-26.474722670879	Nominal Dec [deg]
roll_nom	28.654842775734	Nominal Roll [deg]
revision	2	Processing version of data
ontime	7893.172349751	Sum of GTIs [s]
livetime	7793.2242487607	Livetime [s]
ontime0	7893.1313097477	Sum of GTIs [s]
ontime1	7893.0902697444	Sum of GTIs [s]
ontime2	7893.0492297411	Sum of GTIs [s]
ontime3	7893.2133897543	Sum of GTIs [s]
ontime6	7893.0081897378	Sum of GTIs [s]
ontime7	7893.172349751	Sum of GTIs [s]
l2events	656114	Number of level 2 events

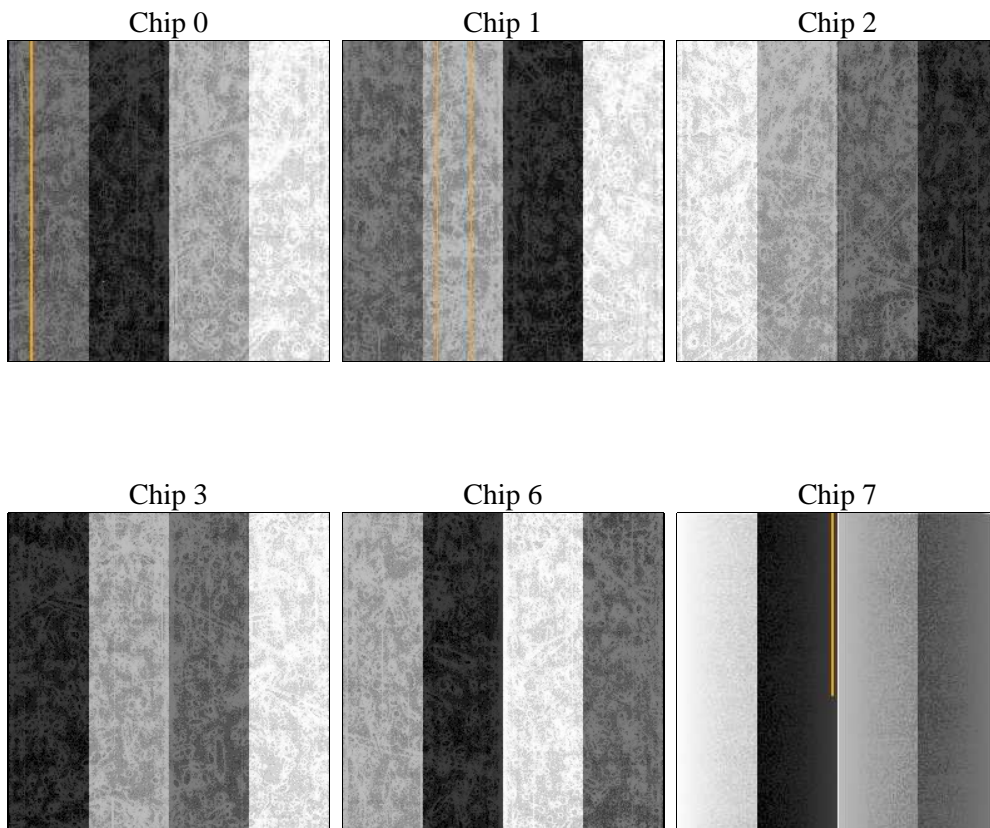
2 OBI

2.1 OBI

2.1.1 Images



2.1.2 Bias



2.1.3 Parameters

obi_num	0	Obi number	sched_exp_time	0.0	[s] Scheduled observation exposure time
ascdsver	8.4.4	Processing system revision	ontime	7893.172349751	Sum of GTIs [s]
caldsver	4.4.9	 	ontime0	7893.1313097477	Sum of GTIs [s]
date	2012-05-01T08:25:43	Date and time of file creation	ontime1	7893.0902697444	Sum of GTIs [s]
revision	2	Processing version of data	ontime2	7893.0492297411	Sum of GTIs [s]
			ontime3	7893.2133897543	Sum of GTIs [s]
			ontime6	7893.0081897378	Sum of GTIs [s]
			ontime7	7893.172349751	Sum of GTIs [s]
			l1events	1102263	Number of level 1 events

2.1.4 Events

	ccd 0	ccd 1	ccd 2	ccd 3	ccd 6	ccd 7		ccd 0	ccd 1	ccd 2	ccd 3	ccd 6	ccd 7
level 1 events	175794	173162	181399	182695	184669	204544	grade 0 events	58871	58399	60143	60369	59809	29606
rejected events	66726	64202	72272	72994	71855	62204		33%	33%	33%	33%	32%	14%
rejected %	37%	37%	39%	39%	38%	30%	grade 1 events	385	381	478	421	348	150
								0%	0%	0%	0%	0%	0%
							grade 2 events	19517	19949	18648	18861	20063	30937
								11%	11%	10%	10%	10%	15%
							grade 3 events	7202	6983	7337	7484	7304	13711
								4%	4%	4%	4%	3%	6%
							grade 4 events	7141	7193	7391	7407	7181	13348
								4%	4%	4%	4%	3%	6%
							grade 5 events	3801	3891	3565	4288	4143	10469
								2%	2%	1%	2%	2%	5%
							grade 6 events	16374	16475	15646	15625	18507	54800
								9%	9%	8%	8%	10%	26%
							grade 7 events	62503	59891	68191	68240	67314	51523
								35%	34%	37%	37%	36%	25%

2.2 Compared Parameters

Parameter	Planned	Actual
Instrument	ACIS	ACIS
Detector	ACIS-012367	ACIS-012367
Grating	NONE	NONE
Data mode	FAINT	FAINT
Observation mode	SECONDARY	SECONDARY
[deg] Pointing RA	0	10.01531833659845
[deg] Pointing Dec	0	-26.47472267087856
[deg] Pointing Roll	0.0	28.6548427757337
[mm] SIM focus pos	-0.782348	-0.7809083437167272
[mm] SIM defocus	0	0.7524282956875696
[mm] SIM translation stage pos	-233.592463	250.4635187648994
[mm] SIM translation stage offset	0	-0.007540371344731511
[s] Observation start time (MET)	306641428.986138	306641427.96114
Observation start date	2007-09-20T02:10:29	2007-09-20T02:10:27
[s] Observation end time (MET)	306652531.786672	306652530.76168
Observation end date	2007-09-20T05:15:32	2007-09-20T05:15:30
Read mode	TIMED	TIMED

Parameter	Planned	Actual
Obspar format version number	7	7
Obspar file type	PREDICTED	ACTUAL
Obspar update status	NONE	UPDATED
On-chip summing requested	N	N
Subarray requested	NONE	NONE
Alternating exposures requested	N	N
[s] Primary exposure time	3.2	3.2

2.3 Star Slots

2.4 FID Slots

A Summary

A.1 Status

V&V Scientist	Jen Lauer
V&V Date (YYYY-MM-DD)	2012.05.03
V&V Edition	1
V&V Disposition and Status	OK
V&V Charge Time	7.893172349751

A.2 Comments