

V&V Reference Report

L2 ASCDS Version : 8.4.4

Observation 57862 - L2 Version 2
Chandra X-Ray Center

L2 Processing Date : May 12 2012

Contents

1	Front	2
2	OBI	3
2.1	OBI	3
2.1.1	Images	3
2.1.2	Bias	3
2.1.3	Parameters	4
2.1.4	Events	4
2.2	Compared Parameters	5
2.3	Star Slots	6
2.4	FID Slots	6
A	Summary	7
A.1	Status	7
A.2	Comments	7

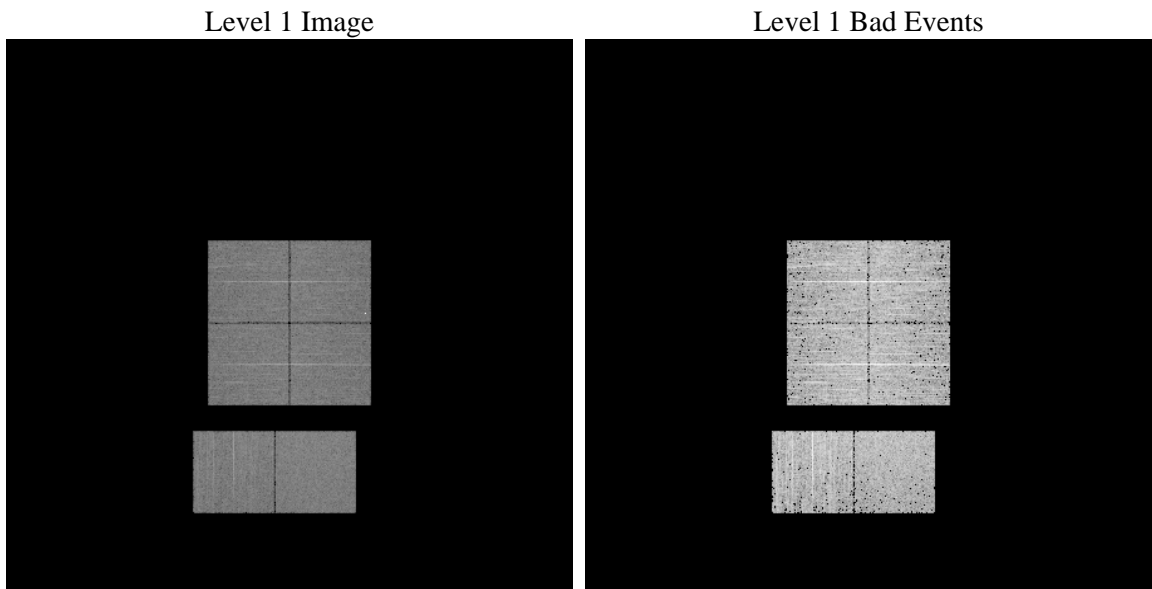
1 Front

seq_num	 	Sequence number
obs_id	57862	Observation id
title	ACIS-012367 diagnostics	Proposal title
observer	CHANDRA engineering request/realtime commanding	Principal investig
object	 	Source name
dtcycle	0	
cycle	P	events from which exps? Prim/Second/Both
ra_targ	0.0	Observer's specified target RA [deg]
dec_targ	0.0	Observer's specified target Dec [deg]
ra_nom	228.98364385009	Nominal RA [deg]
dec_nom	-14.971268519314	Nominal Dec [deg]
roll_nom	80.652555014313	Nominal Roll [deg]
revision	2	Processing version of data
ontime	3125.1352110505	Sum of GTIs [s]
livetime	3085.5628672777	Livetime [s]
ontime0	3125.0941710472	Sum of GTIs [s]
ontime1	3125.0531310439	Sum of GTIs [s]
ontime2	3125.0120910406	Sum of GTIs [s]
ontime3	3125.1762510538	Sum of GTIs [s]
ontime6	3124.9710510373	Sum of GTIs [s]
ontime7	3125.1352110505	Sum of GTIs [s]
l2events	251605	Number of level 2 events

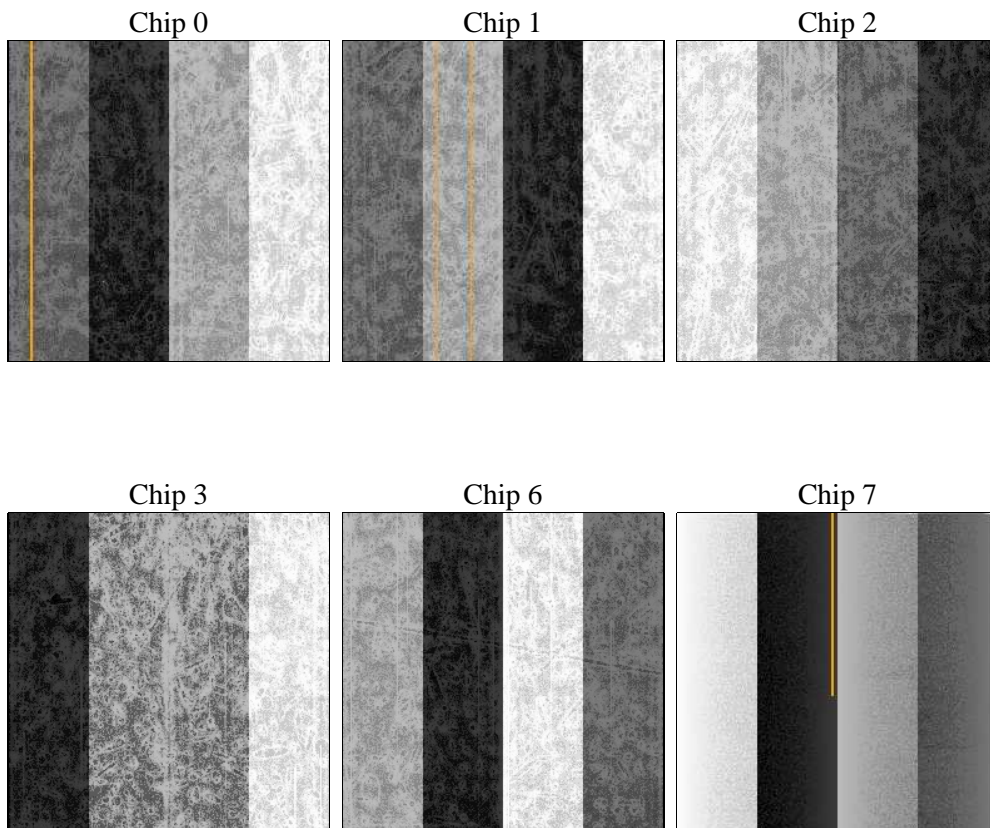
2 OBI

2.1 OBI

2.1.1 Images



2.1.2 Bias



2.1.3 Parameters

obi_num	0	Obi number	sched_exp_time	0.0	[s] Scheduled observation exposure time
ascdsver	8.4.4	Processing system revision	ontime	3125.1352110505	Sum of GTIs [s]
caldsver	4.4.9	 	ontime0	3125.0941710472	Sum of GTIs [s]
date	2012-05-13T00:36:55	Date and time of file creation	ontime1	3125.0531310439	Sum of GTIs [s]
revision	2	Processing version of data	ontime2	3125.0120910406	Sum of GTIs [s]
			ontime3	3125.1762510538	Sum of GTIs [s]
			ontime6	3124.9710510373	Sum of GTIs [s]
			ontime7	3125.1352110505	Sum of GTIs [s]
			l1events	431908	Number of level 1 events

2.1.4 Events

	ccd 0	ccd 1	ccd 2	ccd 3	ccd 6	ccd 7		ccd 0	ccd 1	ccd 2	ccd 3	ccd 6	ccd 7
level 1 events	68157	71048	70333	70284	73530	78556	grade 0 events	22520	23939	22735	22911	22903	11220
rejected events	26299	27344	28767	28092	29652	24580		33%	33%	32%	32%	31%	14%
rejected %	38%	38%	40%	39%	40%	31%	grade 1 events	169	142	158	179	127	50
								0%	0%	0%	0%	0%	0%
							grade 2 events	7516	7834	6891	7301	7729	11791
								11%	11%	9%	10%	10%	15%
							grade 3 events	2759	2696	2880	2831	2743	4986
								4%	3%	4%	4%	3%	6%
							grade 4 events	2662	2668	2736	2733	2803	4888
								3%	3%	3%	3%	3%	6%
							grade 5 events	1476	1577	1458	1646	1634	4071
								2%	2%	2%	2%	2%	5%
							grade 6 events	6439	6625	6361	6456	7745	21163
								9%	9%	9%	9%	10%	26%
							grade 7 events	24616	25567	27114	26227	27846	20387
								36%	35%	38%	37%	37%	25%

2.2 Compared Parameters

Parameter	Planned	Actual	Parameter	Planned	Actual
Instrument	ACIS	ACIS	Obspar format version number	7	7
Detector	ACIS-012367	ACIS-012367	Obspar file type	PREDICTED	ACTUAL
Grating	NONE	NONE	Obspar update status	NONE	UPDATED
Data mode	FAINT	FAINT	On-chip summing requested	N	N
Observation mode	SECONDARY	SECONDARY	Subarray requested	NONE	NONE
[deg] Pointing RA	0	228.9836438500901	Alternating exposures requested	N	N
[deg] Pointing Dec	0	-14.97126851931429	[s] Primary exposure time	3.2	3.2
[deg] Pointing Roll	0.0	80.65255501431287			
[mm] SIM focus pos	-1.429586	-0.6828225247311905			
[mm] SIM defocus	0.1037507710433287	0.8505141146731063			
[mm] SIM translation stage pos	250.455976	250.466033080201			
[mm] SIM translation stage offset	0	-0.01005468664627074			
[s] Observation start time (MET)	324414263.596655	324414262.57166			
Observation start date	2008-04-12T19:04:24	2008-04-12T19:04:22			
[s] Observation end time (MET)	324428951.84737	324428950.82237			
Observation end date	2008-04-12T23:09:12	2008-04-12T23:09:10			
Read mode	TIMED	TIMED			

2.3 Star Slots

2.4 FID Slots

A Summary

A.1 Status

V&V Scientist	Beth Sundheim
V&V Date (YYYY-MM-DD)	2012.05.15
V&V Edition	1
V&V Disposition and Status	OK
V&V Charge Time	3.1251352110505

A.2 Comments