

V&V Reference Report

L2 ASCDS Version : 8.4.4

Observation 57822 - L2 Version 2
Chandra X-Ray Center

L2 Processing Date : May 14 2012

Contents

1	Front	2
2	OBI	3
2.1	OBI	3
2.1.1	Images	3
2.1.2	Bias	3
2.1.3	Parameters	4
2.1.4	Events	4
2.2	Compared Parameters	5
2.3	Star Slots	6
2.4	FID Slots	6
A	Summary	7
A.1	Status	7
A.2	Comments	7

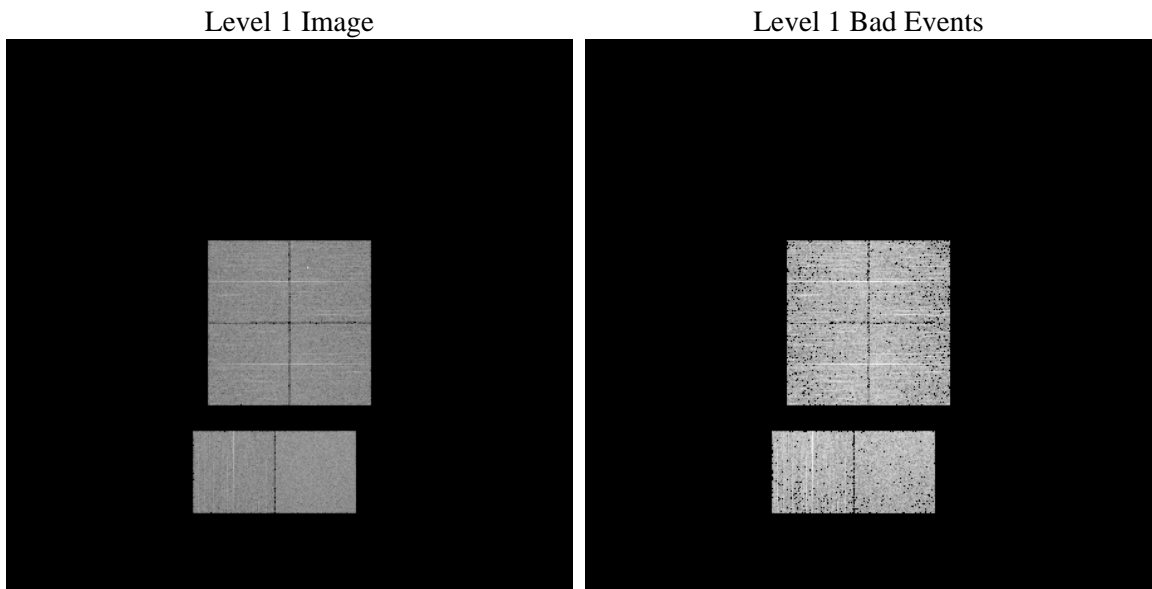
1 Front

seq_num	 	Sequence number
obs_id	57822	Observation id
title	ACIS-012367 diagnostics	Proposal title
observer	CHANDRA engineering request/realtime commanding	Principal investig
object	 	Source name
dtcycle	0	
cycle	P	events from which exps? Prim/Second/Both
ra_targ	0.0	Observer's specified target RA [deg]
dec_targ	0.0	Observer's specified target Dec [deg]
ra_nom	225.97045048419	Nominal RA [deg]
dec_nom	7.2831998039248	Nominal Dec [deg]
roll_nom	181.08438981073	Nominal Roll [deg]
revision	2	Processing version of data
ontime	2796.1449165344	Sum of GTIs [s]
livetime	2760.7384459649	Livetime [s]
ontime0	2796.1038765311	Sum of GTIs [s]
ontime1	2796.0628365278	Sum of GTIs [s]
ontime2	2796.0217965245	Sum of GTIs [s]
ontime3	2796.1859565377	Sum of GTIs [s]
ontime6	2795.9807565212	Sum of GTIs [s]
ontime7	2796.1449165344	Sum of GTIs [s]
l2events	202257	Number of level 2 events

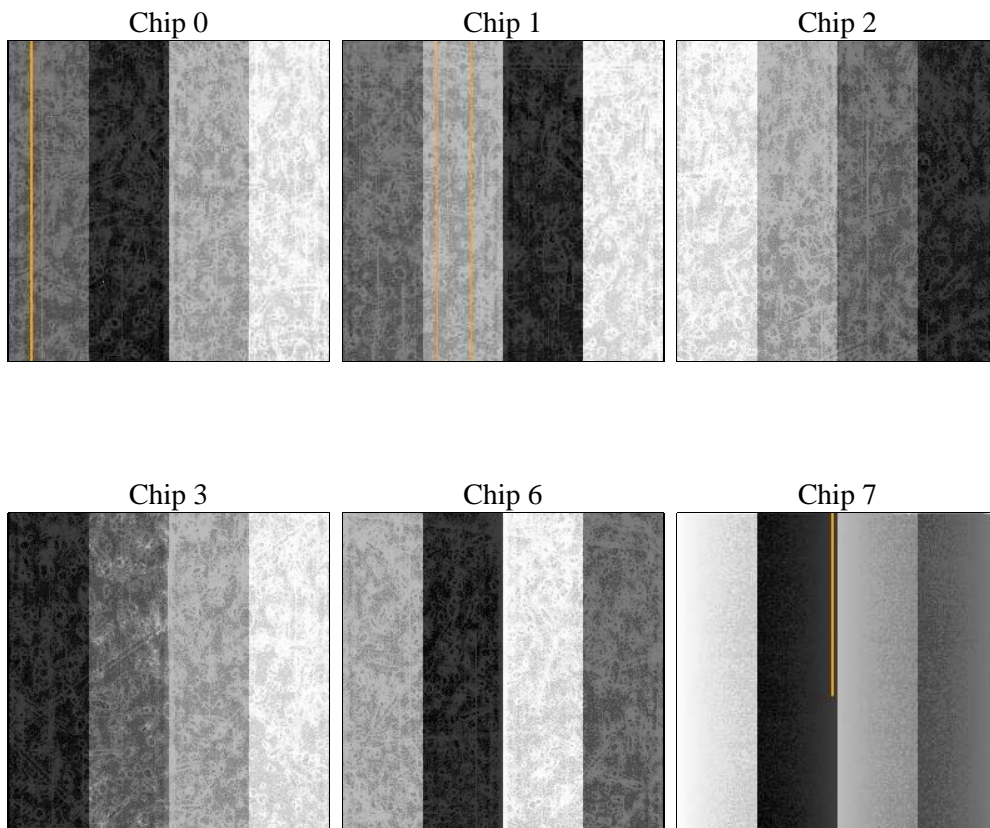
2 OBI

2.1 OBI

2.1.1 Images



2.1.2 Bias



2.1.3 Parameters

obi_num	1	Obi number	sched_exp_time	0.0	[s] Scheduled observation exposure time
ascdsver	8.4.4	Processing system revision	ontime	2796.1449165344	Sum of GTIs [s]
caldsver	4.4.9	 	ontime0	2796.1038765311	Sum of GTIs [s]
date	2012-05-14T05:25:21	Date and time of file creation	ontime1	2796.0628365278	Sum of GTIs [s]
revision	2	Processing version of data	ontime2	2796.0217965245	Sum of GTIs [s]
			ontime3	2796.1859565377	Sum of GTIs [s]
			ontime6	2795.9807565212	Sum of GTIs [s]
			ontime7	2796.1449165344	Sum of GTIs [s]
			l1events	353760	Number of level 1 events

2.1.4 Events

	ccd 0	ccd 1	ccd 2	ccd 3	ccd 6	ccd 7		ccd 0	ccd 1	ccd 2	ccd 3	ccd 6	ccd 7
level 1 events	56308	57008	57314	57093	59460	66577	grade 0 events	17758	17750	18519	18513	18471	9181
rejected events	23236	22786	23588	23574	24861	21475		31%	31%	32%	32%	31%	13%
rejected %	41%	39%	41%	41%	41%	32%	grade 1 events	138	91	149	143	88	49
								0%	0%	0%	0%	0%	0%
							grade 2 events	5889	7002	5722	5705	6068	9906
								10%	12%	9%	9%	10%	14%
							grade 3 events	2265	2192	2319	2284	2284	4277
								4%	3%	4%	4%	3%	6%
							grade 4 events	2208	2207	2265	2364	2237	4281
								3%	3%	3%	4%	3%	6%
							grade 5 events	1302	1396	1210	1397	1468	3520
								2%	2%	2%	2%	2%	5%
							grade 6 events	4952	5071	4901	4653	5539	17457
								8%	8%	8%	8%	9%	26%
							grade 7 events	21796	21299	22229	22034	23305	17906
								38%	37%	38%	38%	39%	26%

2.2 Compared Parameters

Parameter	Planned	Actual	Parameter	Planned	Actual
Instrument	ACIS	ACIS	Obspar format version number	7	7
Detector	ACIS-012367	ACIS-012367	Obspar file type	PREDICTED	ACTUAL
Grating	NONE	NONE	Obspar update status	NONE	UPDATED
Data mode	FAINT	FAINT	On-chip summing requested	N	N
Observation mode	SECONDARY	SECONDARY	Subarray requested	NONE	NONE
[deg] Pointing RA	0	225.9704504841949	Alternating exposures requested	N	N
[deg] Pointing Dec	0	7.283199803924834	[s] Primary exposure time	3.2	3.2
[deg] Pointing Roll	0.0	181.084389810725			
[mm] SIM focus pos	-1.429586	-0.6828225247311905			
[mm] SIM defocus	0.1037507710433287	0.8505141146731063			
[mm] SIM translation stage pos	250.455976	250.466033080201			
[mm] SIM translation stage offset	0	-0.01005468664627074			
[s] Observation start time (MET)	326700829.608053	326700828.58305			
Observation start date	2008-05-09T06:13:50	2008-05-09T06:13:48			
[s] Observation end time (MET)	326709747.108487	326709746.08349			
Observation end date	2008-05-09T08:42:27	2008-05-09T08:42:26			
Read mode	TIMED	TIMED			

2.3 Star Slots

2.4 FID Slots

A Summary

A.1 Status

V&V Scientist	Beth Sundheim
V&V Date (YYYY-MM-DD)	2012.05.16
V&V Edition	1
V&V Disposition and Status	OK
V&V Charge Time	2.7961449165344

A.2 Comments