

V&V Reference Report

L2 ASCDS Version : 7.6.7.1

Observation 5772 - L2 Version 002
Chandra X-Ray Center

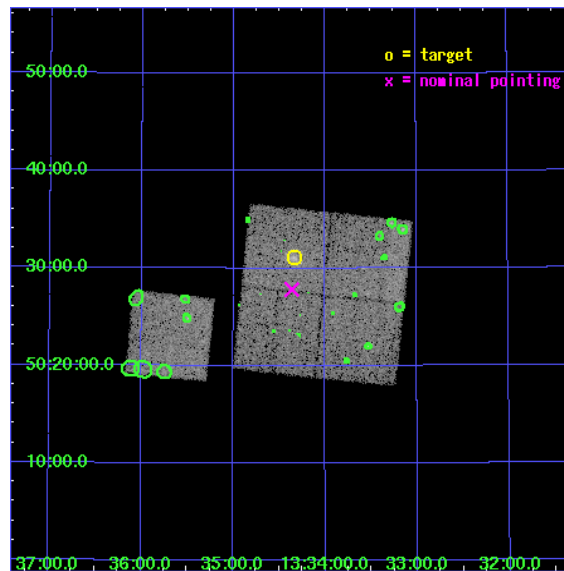
L2 Processing Date : Mar 18 2006

Contents

1	Front	2
2	OBI	3
2.1	OBI	3
2.1.1	Images	3
2.1.2	Bias	3
2.1.3	Parameters	4
2.1.4	Events	4
2.2	Compared Parameters	5
2.3	Aspect	6
2.4	Star Slots	9
2.4.1	Slot 3	9
2.4.2	Slot 4	10
2.4.3	Slot 5	11
2.4.4	Slot 6	12
2.4.5	Slot 7	13
2.5	FID Slots	14
2.5.1	Slot 0	14
2.5.2	Slot 1	15
2.5.3	Slot 2	16
3	Point Sources	17
A	Summary	18
A.1	Status	18
A.2	Comments	18

1 Front

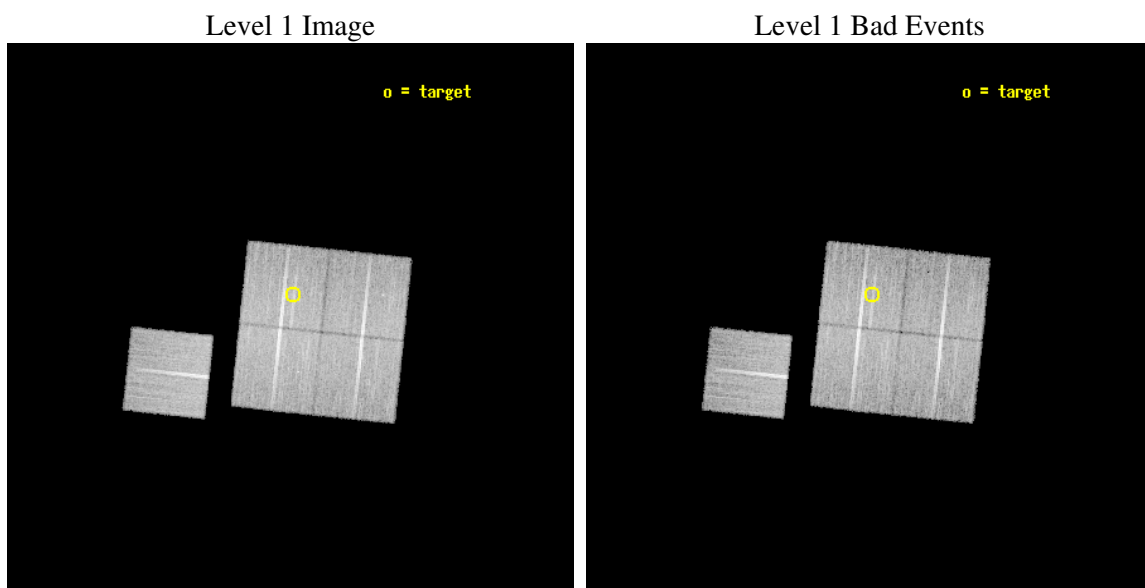
seq_num	800485
obs_id	5772
title	Chandra observations of high-redshift clusters of galaxies from the 400 Square Degrees ROSAT PSPC survey
observer	Dr. Steven Murray
object	cl1334+5031
dtcycle	0
cycle	P
ra_targ	203.584583
dec_targ	50.518056
ra_nom	203.59043606147
dec_nom	50.463904432186
roll_nom	276.03003338695
revision	2
ontime	19750.059001774
livetime	19492.009941134
ontime0	19753.19996202
ontime1	19746.917981714
ontime2	19746.91802153
ontime3	19750.059001774
ontime6	19753.19996202
l2events	68232



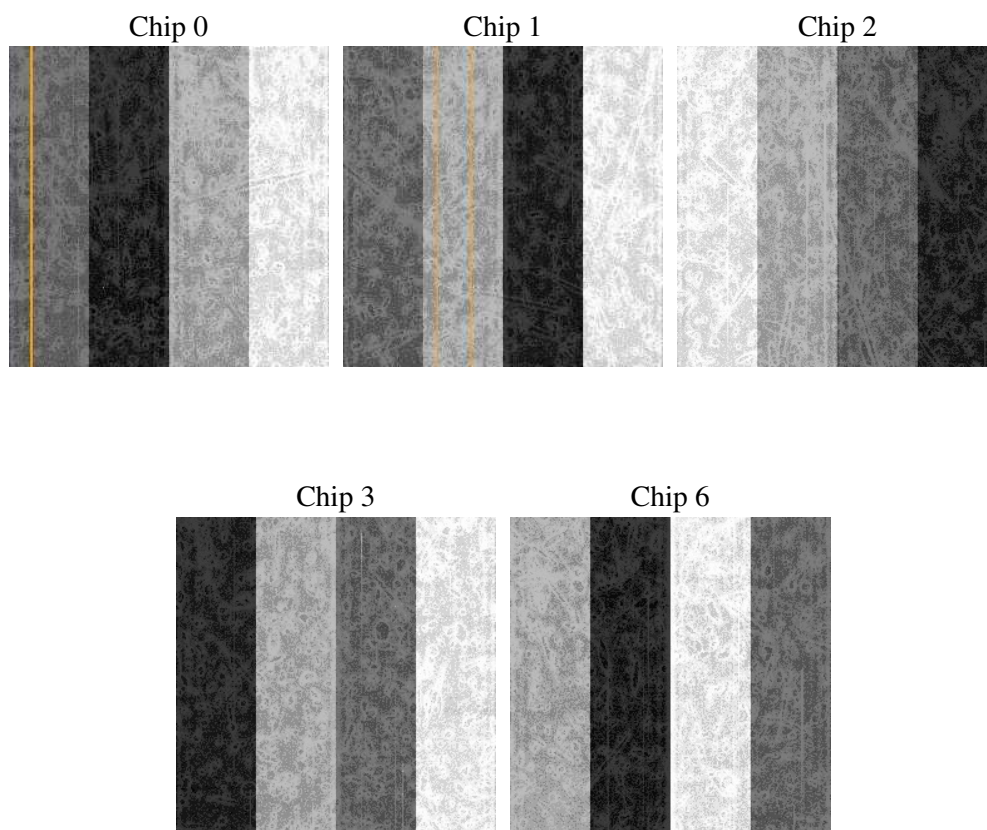
2 OBI

2.1 OBI

2.1.1 Images



2.1.2 Bias



2.1.3 Parameters

obi_num	1
ascdsver	7.6.7.1
caldsver	3.2.1
date	2006-03-18T21:47:27
revision	2

sched_exp_time	19592.056000
ontime	20014.482077092
ontime0	20017.623037338
ontime1	20011.34107691
ontime2	20011.341096848
ontime3	20014.482077092
ontime6	20017.623037338
l1events	617033

2.1.4 Events

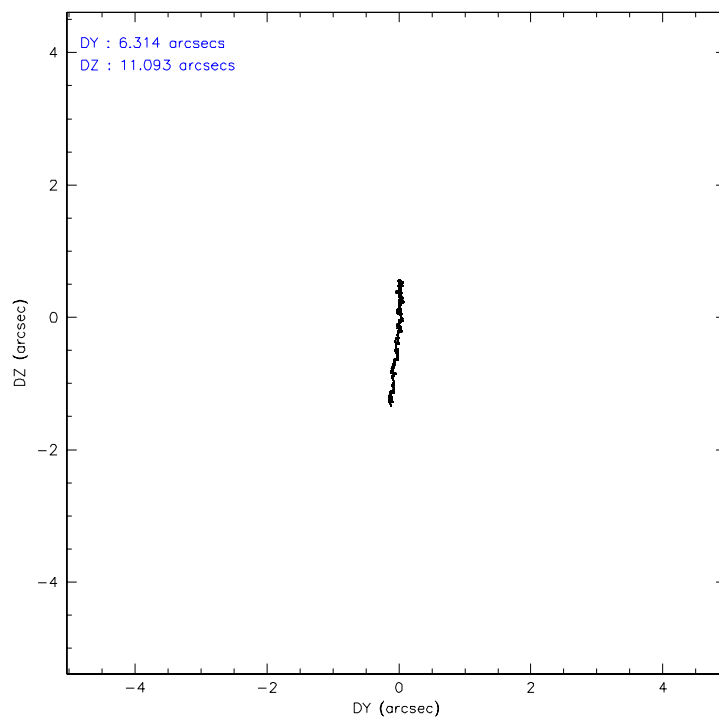
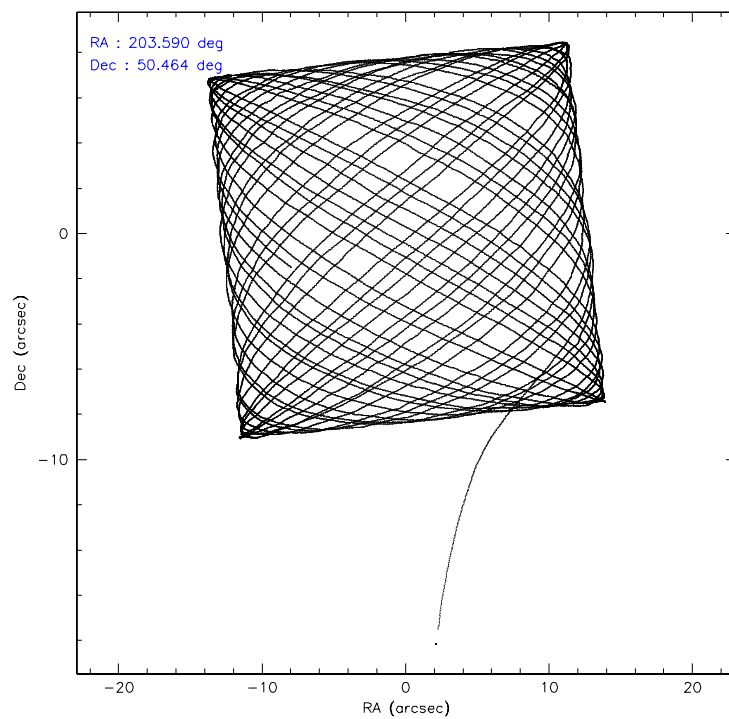
	ccd 0	ccd 1	ccd 2	ccd 3	ccd 6
level 1 events	119307	115543	132707	124666	124810
rejected events	104253	97999	117166	109356	108162
rejected %	87%	84%	88%	87%	86%

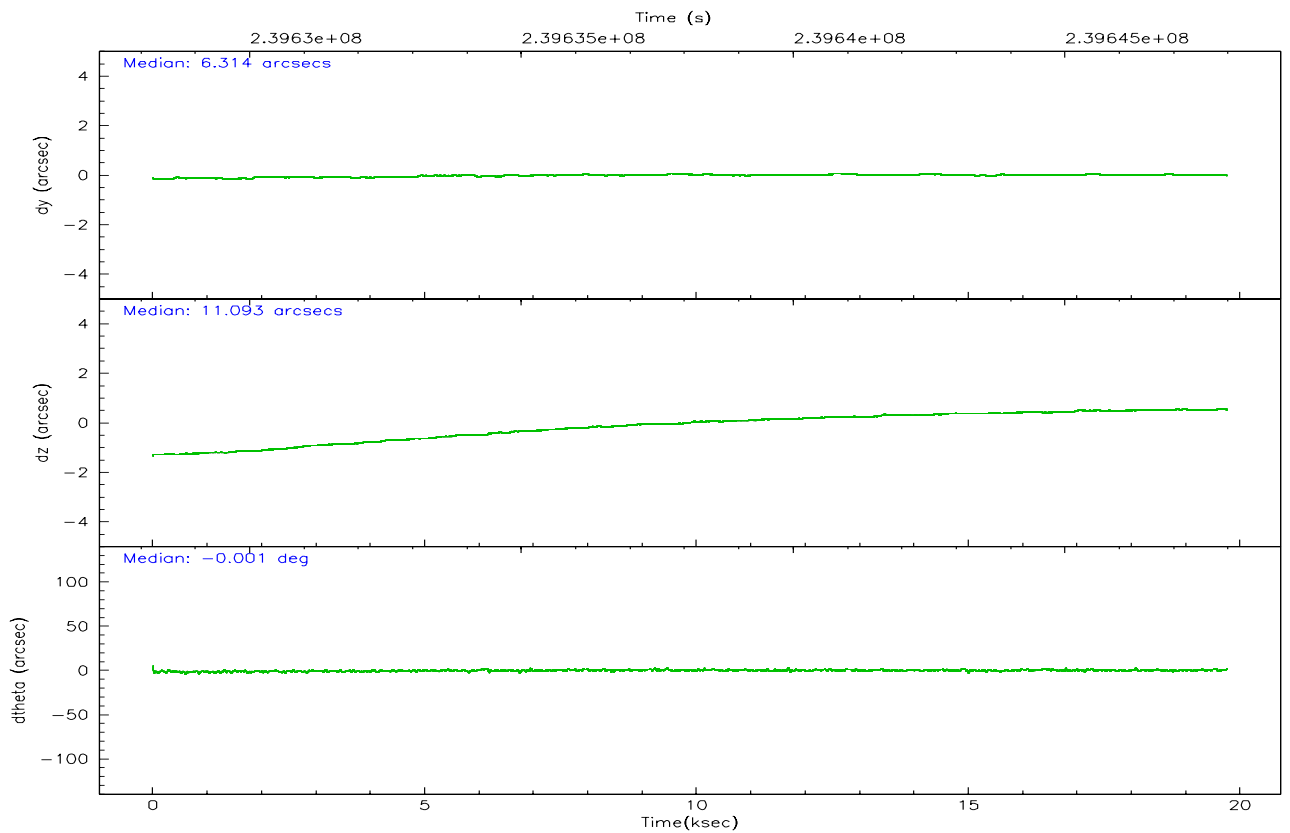
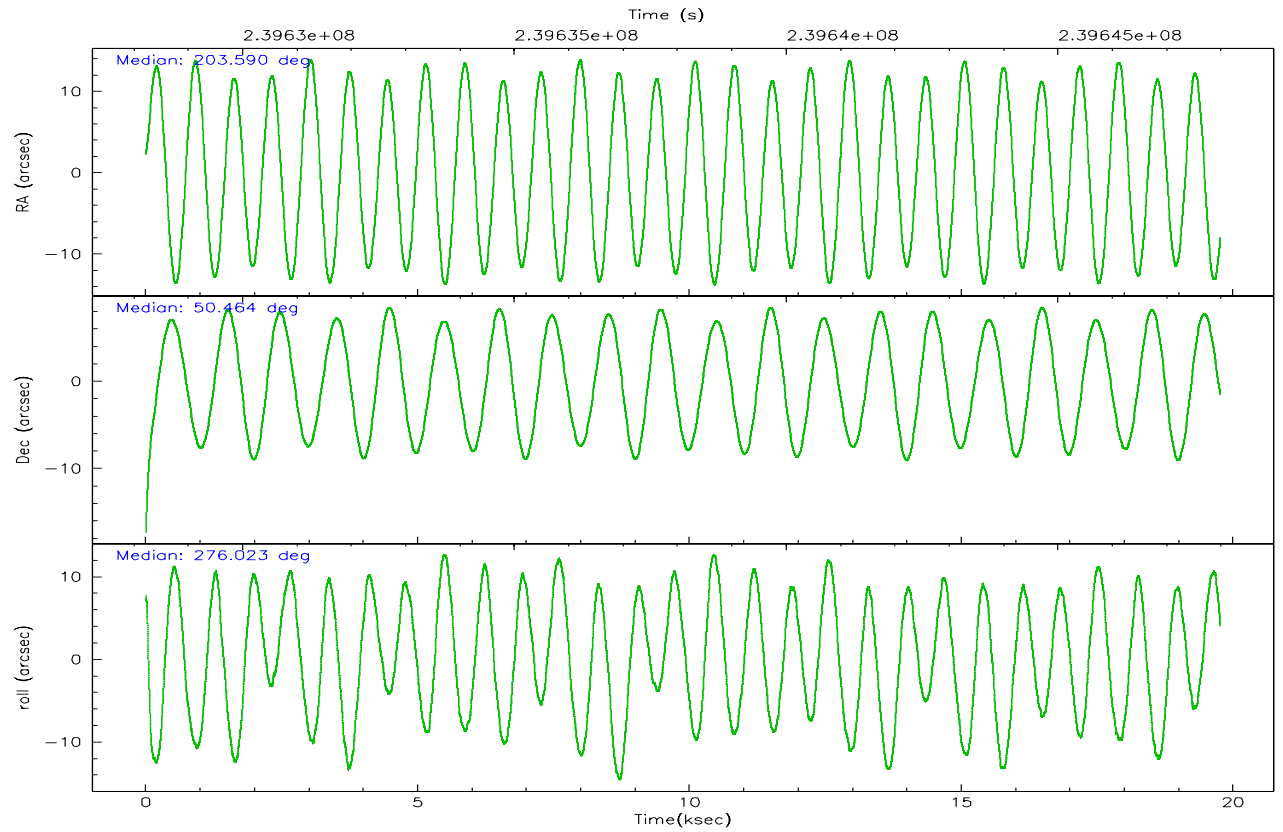
	ccd 0	ccd 1	ccd 2	ccd 3	ccd 6
grade 0 events	6579	8069	7123	7326	7820
	5%	6%	5%	5%	6%
grade 1 events	79	75	89	92	71
	0%	0%	0%	0%	0%
grade 2 events	3223	3478	3232	2926	3221
	2%	3%	2%	2%	2%
grade 3 events	1536	1633	1395	1433	1565
	1%	1%	1%	1%	1%
grade 4 events	1400	1628	1466	1418	1462
	1%	1%	1%	1%	1%
grade 5 events	4231	4695	3937	4959	4862
	3%	4%	2%	3%	3%
grade 6 events	2493	2890	2455	2379	2745
	2%	2%	1%	1%	2%
grade 7 events	99766	93075	113010	104133	103064
	83%	80%	85%	83%	82%

2.2 Compared Parameters

Parameter	Planned	Actual	Parameter	Planned	Actual
Instrument	ACIS	ACIS	Obspar format version number	6	6
Detector	ACIS-01236	ACIS-01236	Obspar file type	PREDICTED	ACTUAL
Grating	NONE	NONE	Obspar update status	NONE	UPDATED
Data mode	VFAINT	VFAINT	On-chip summing requested	N	N
Observation mode	POINTING	POINTING	Subarray requested	NONE	NONE
Pointing RA	203.564971	203.5904360614685	Alternating exposures requested	N	N
Pointing Dec	50.485956	50.46390443218559	Primary exposure time	0.000000	3.1
Pointing Roll	275.840979	276.0300333869524			
SIM focus pos (mm)	-0.782348	-0.7809083437167272			
SIM defocus (mm)	0	0.001439871863259334			
SIM translation stage pos (mm)	-225.840463	-225.8458576473255			
SIM translation stage offset (mm)	-7.752	-7.746595355604228			
Observation start time	239628396.184000	239627282.0247			
Observation start date	2005-08-05T11:25:32	2005-08-05T11:08:02			
Observation end time	239647988.184000	239648217.65066			
Observation end date	2005-08-05T16:52:04	2005-08-05T16:56:57			
Read mode	TIMED	TIMED			

2.3 Aspect



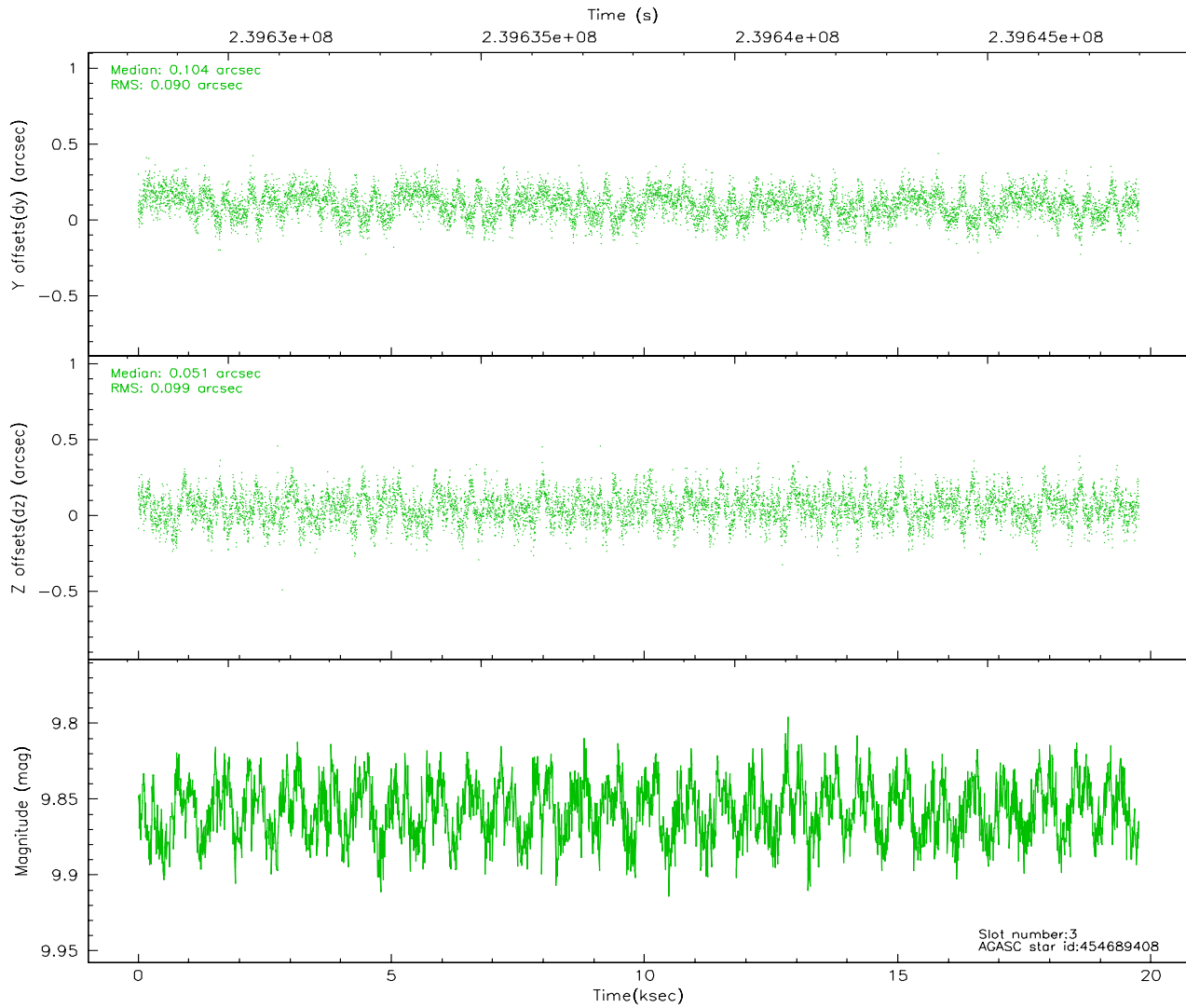
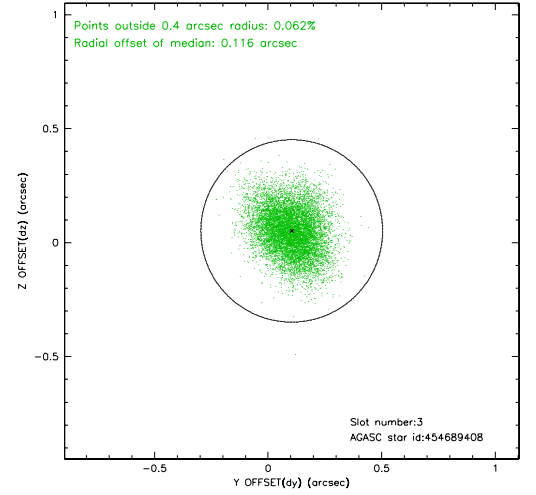
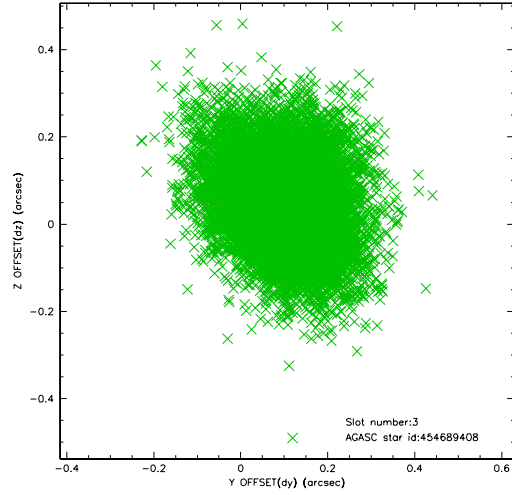


Slot Statistics

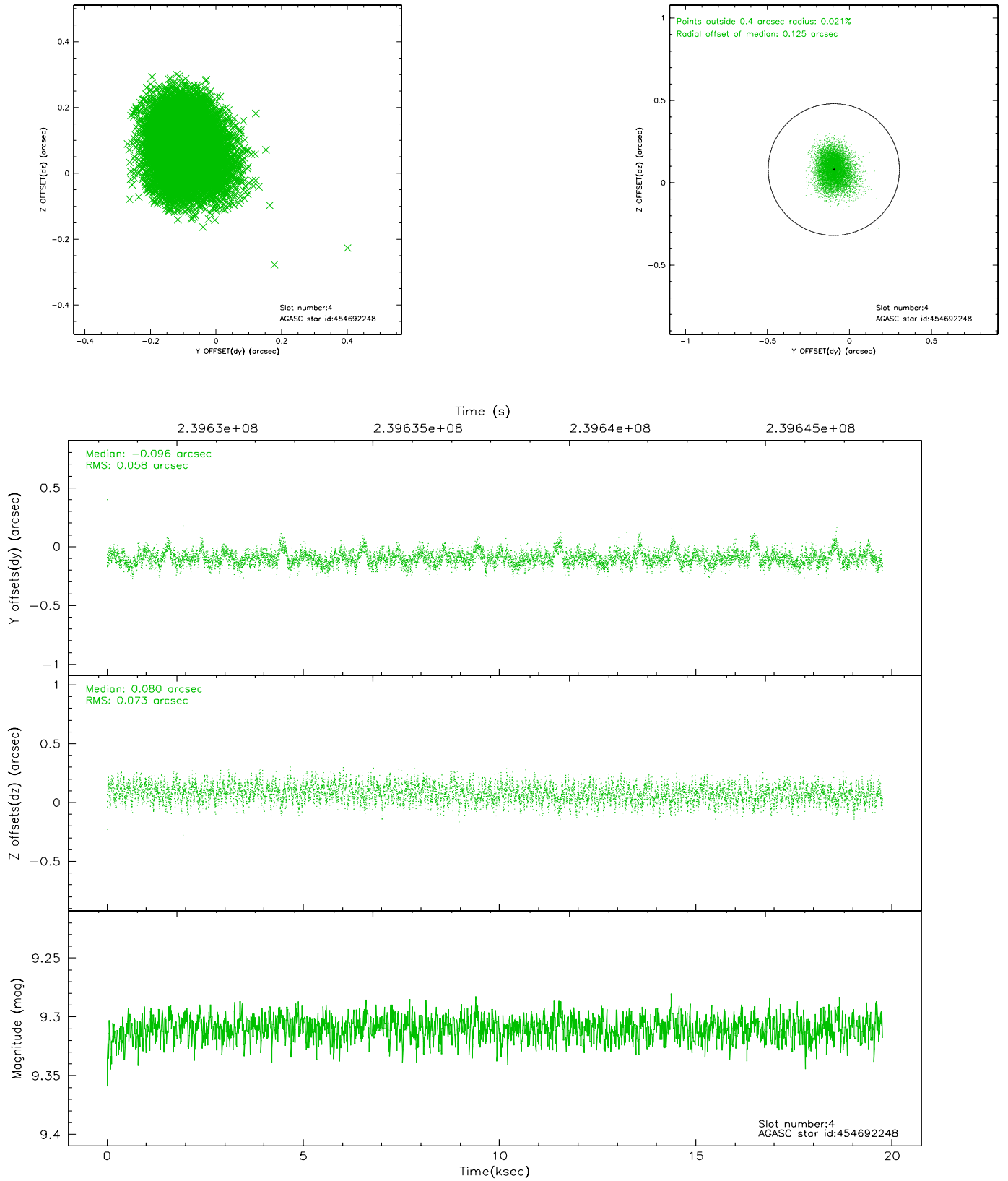
slot	status	id	mag	n_pts	med_dy	med_dz	dr1	dr2	ra	dec	mean_y	mean_z
0	FID	ACIS-I-2	7.18	4820	-0.095	-0.014	0.016	0.022	0.000000	0.000000	-761.43	-998.80
1	FID	ACIS-I-4	7.14	4819	-0.071	0.104	0.023	0.031	0.000000	0.000000	2152.56	907.25
2	FID	ACIS-I-6	7.25	4820	0.069	-0.028	0.023	0.041	0.000000	0.000000	399.51	1548.59
3	GUIDE	454689408	9.86	9632	0.104	0.051	0.141	0.231	204.048480	51.127713	-2190.51	1322.36
4	GUIDE	454692248	9.31	9631	-0.096	0.080	0.099	0.162	202.744066	50.628741	-712.19	-1811.01
5	GUIDE	454692736	9.73	9625	0.137	0.068	0.109	0.178	203.552835	50.198777	1025.56	-132.72
6	GUIDE	454694864	7.97	9639	-0.152	0.279	0.067	0.109	203.458203	50.950289	-1687.32	-70.38
7	GUIDE	454695192	9.48	9629	0.002	-0.475	0.105	0.172	204.457251	51.057745	-1854.61	2218.87

2.4 Star Slots

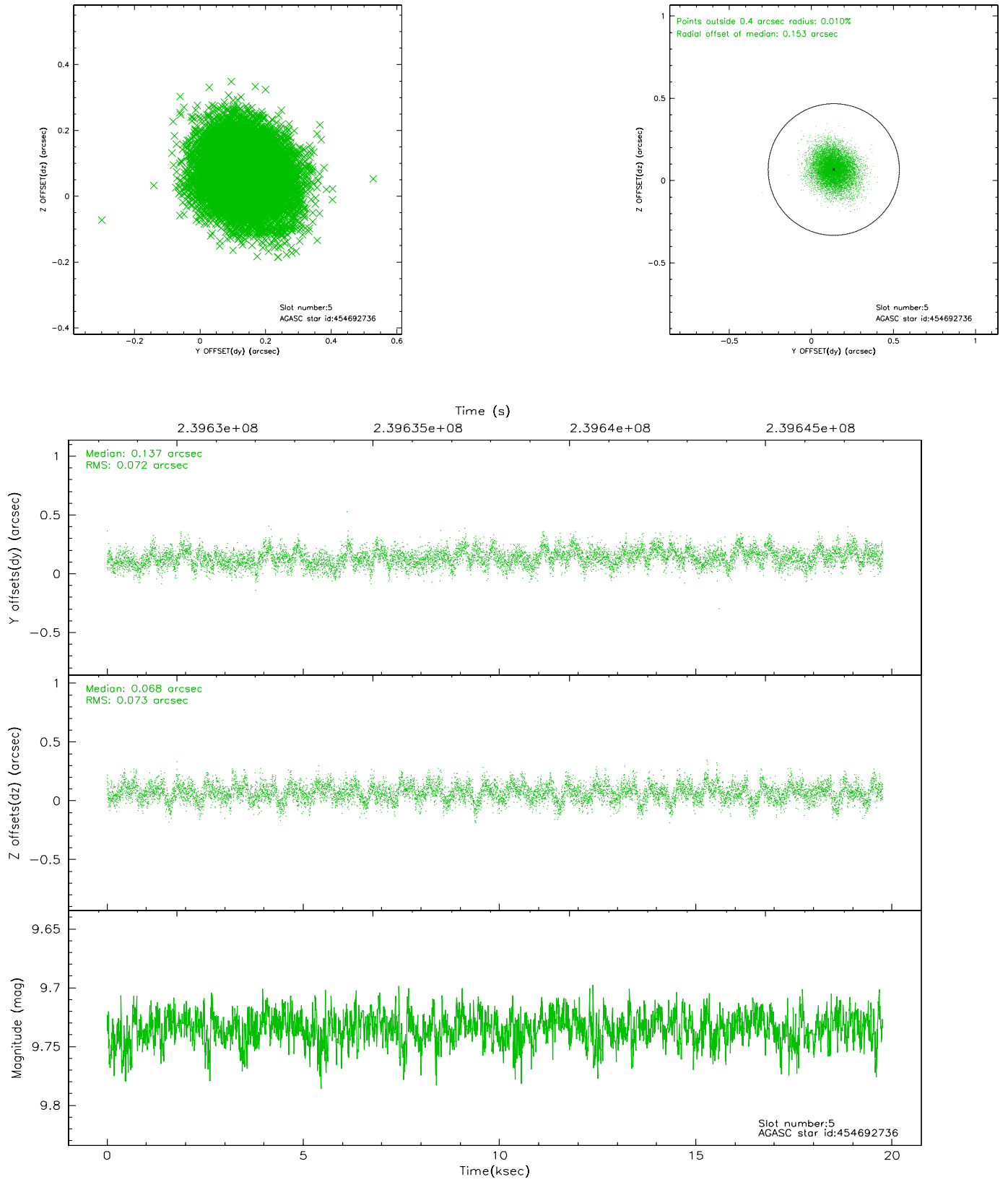
2.4.1 Slot 3



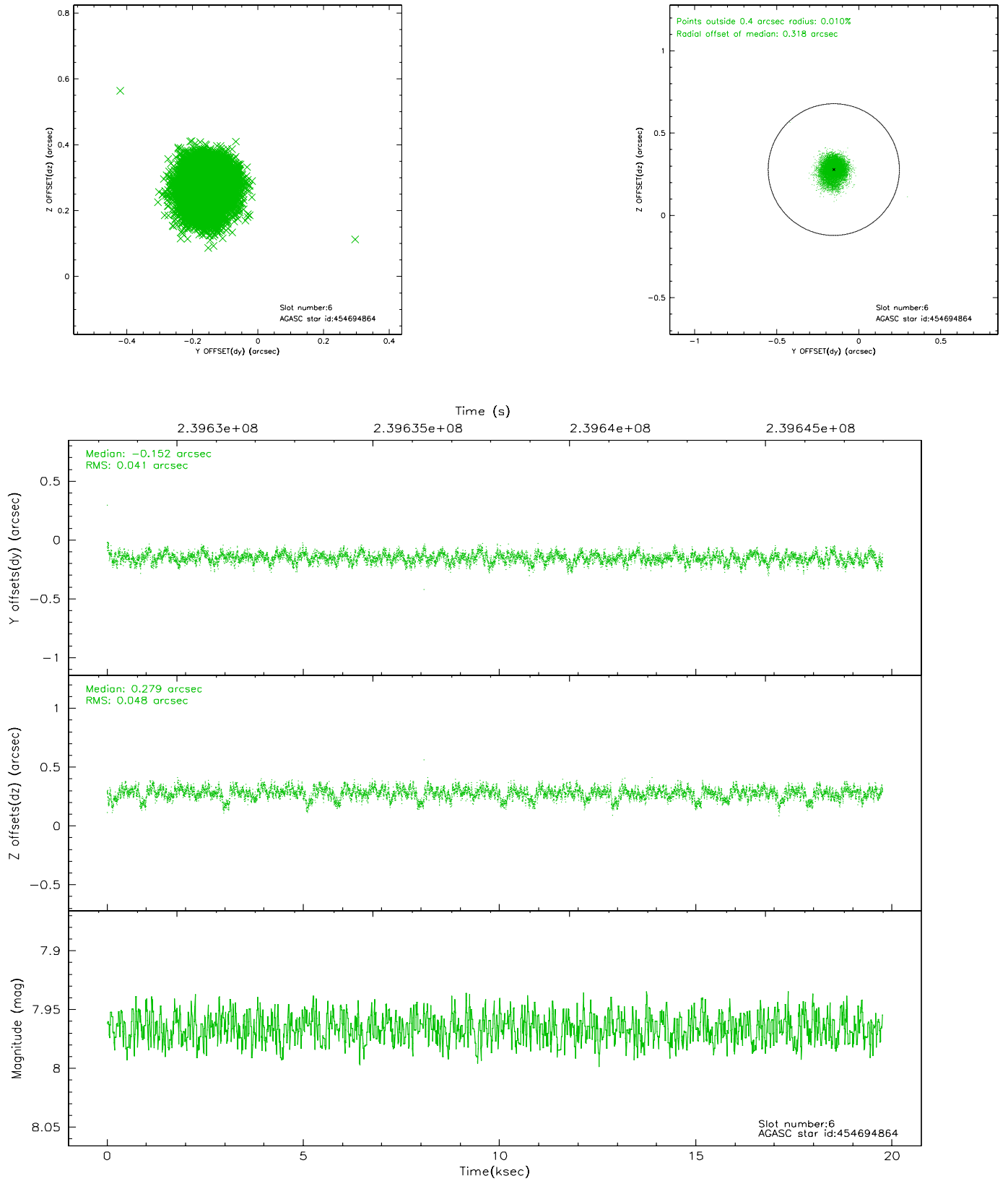
2.4.2 Slot 4



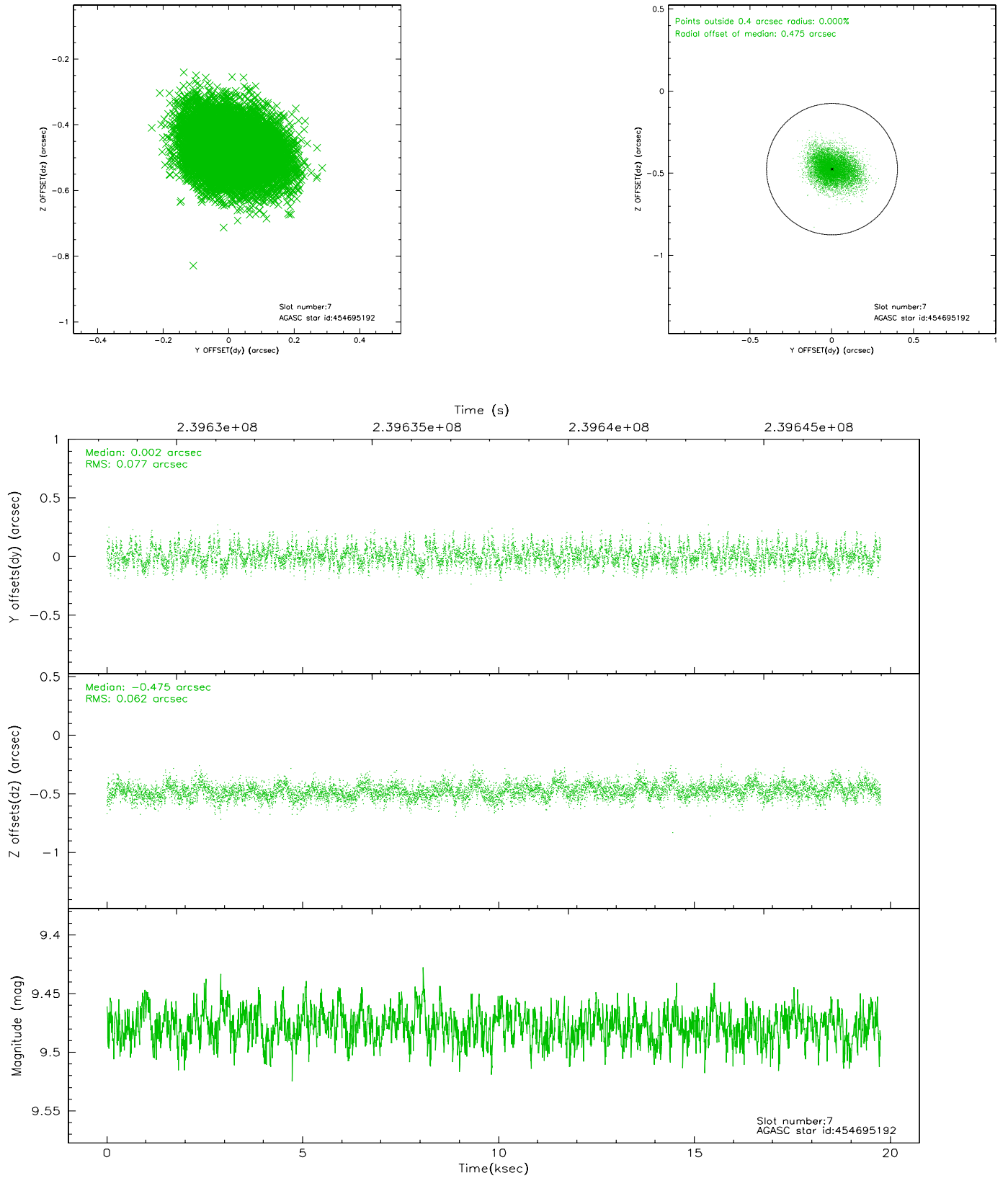
2.4.3 Slot 5



2.4.4 Slot 6

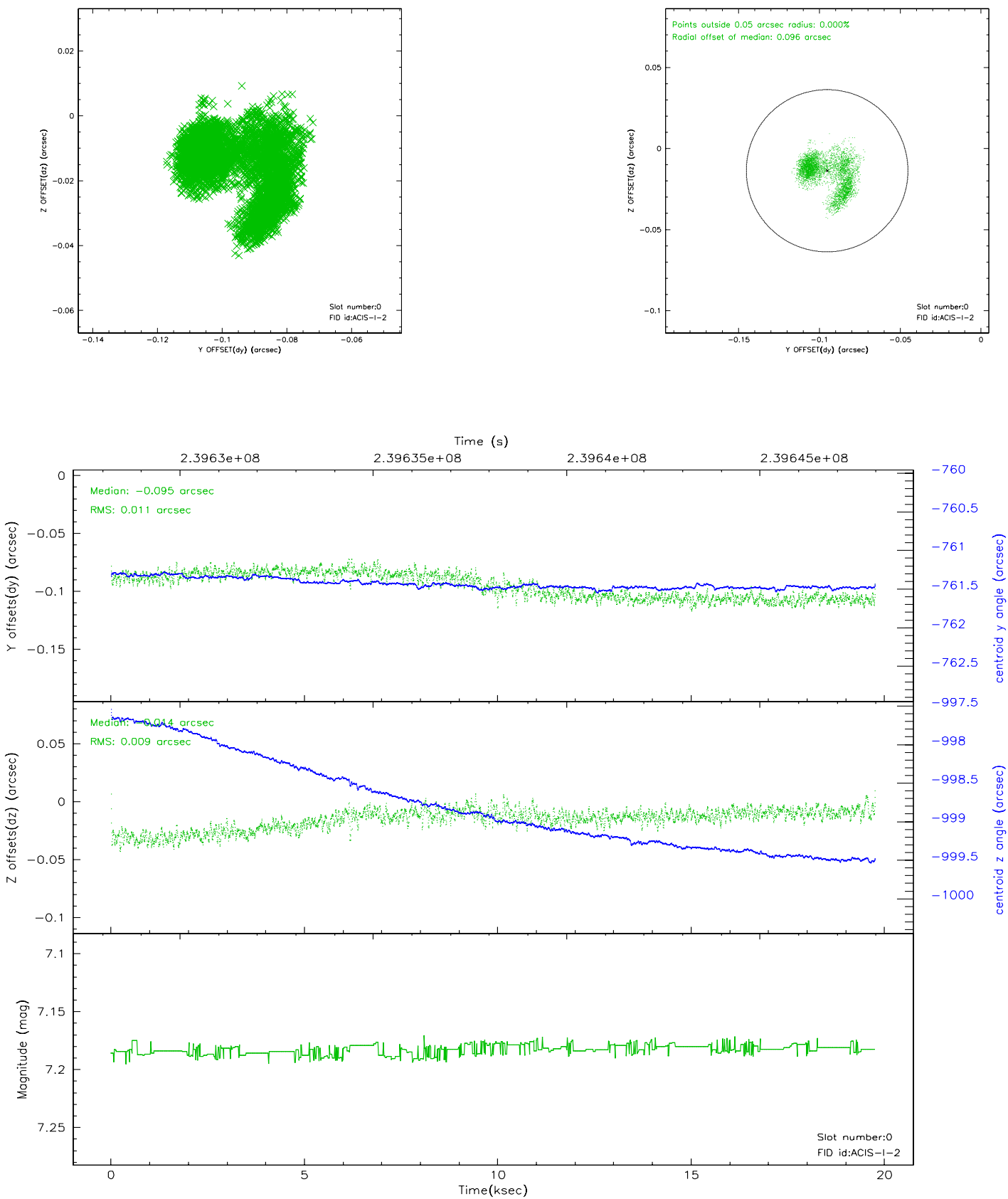


2.4.5 Slot 7

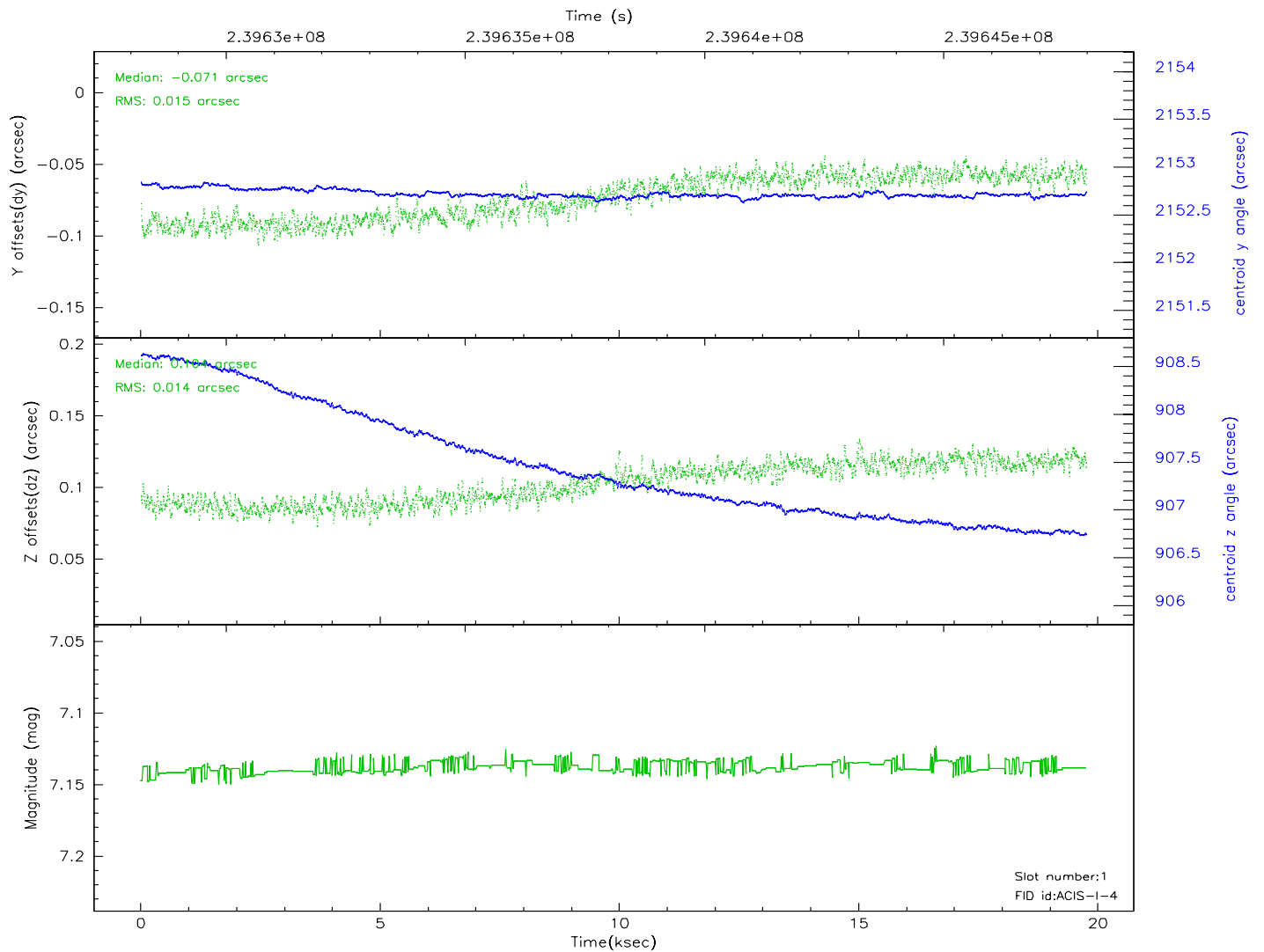
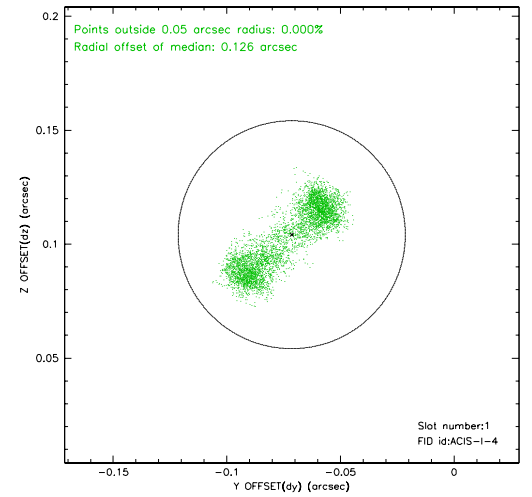
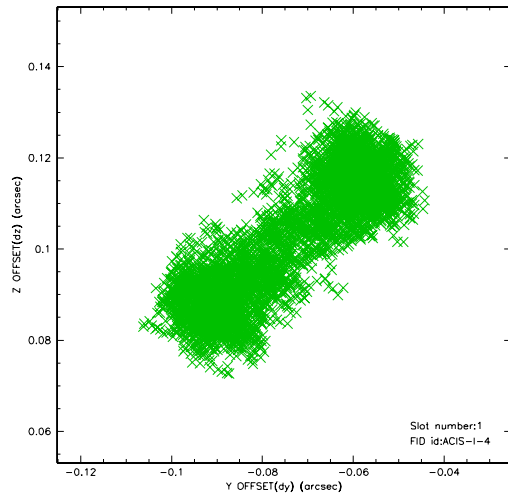


2.5 FID Slots

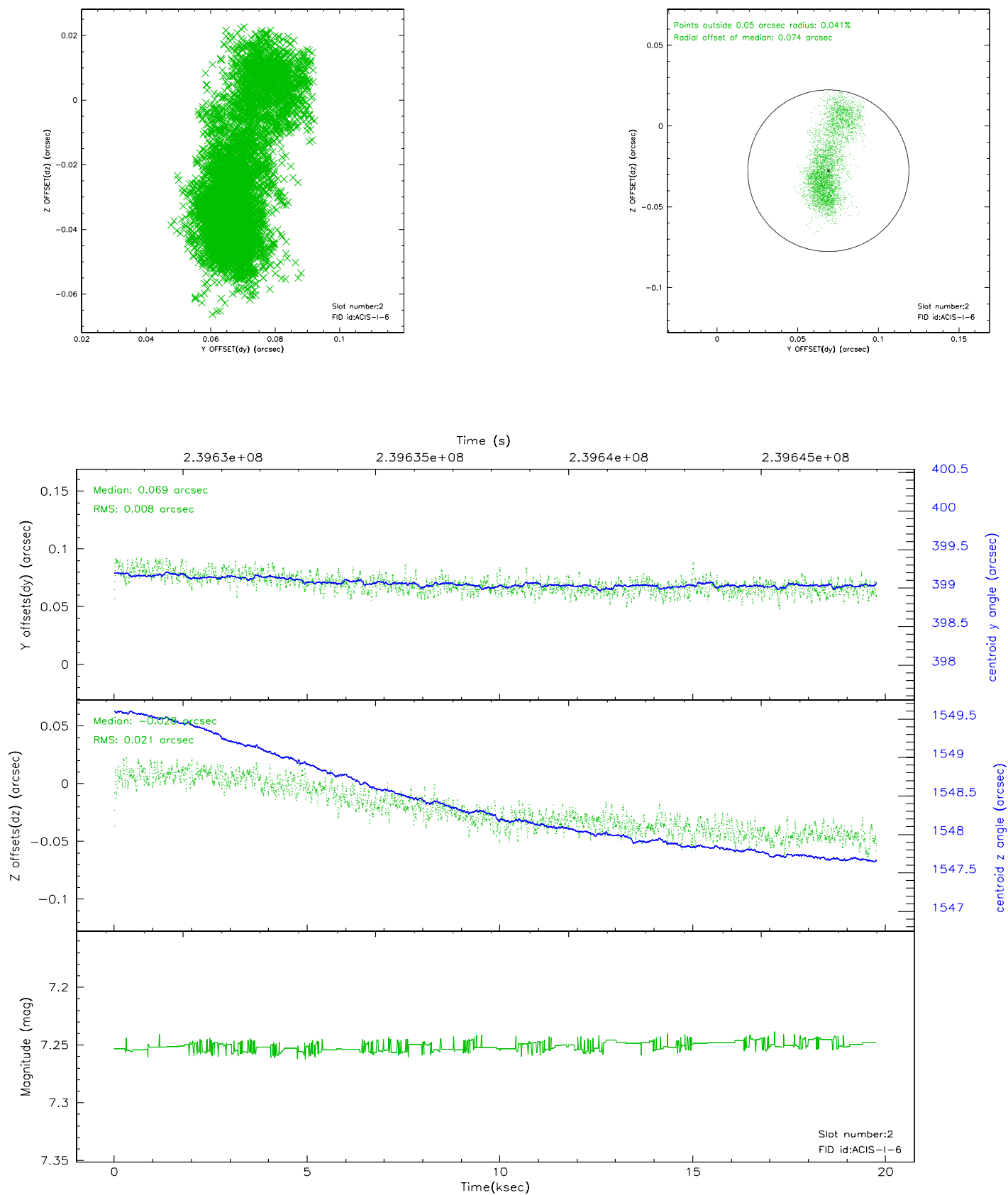
2.5.1 Slot 0



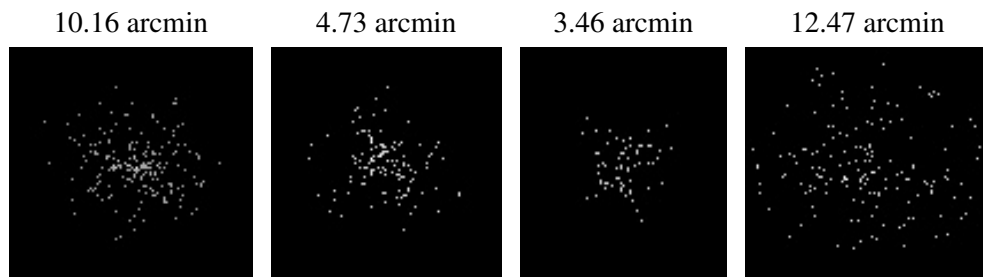
2.5.2 Slot 1



2.5.3 Slot 2



3 Point Sources



A Summary

A.1 Status

V&V Scientist	Jen Lauer
V&V Date (YYYY-MM-DD)	2006.03.20
V&V Edition	1
V&V Disposition and Status	OK
V&V Charge Time	19.7501

A.2 Comments