

# V&V Reference Report

## L2 ASCDS Version : 8.4.4

Observation 57522 - L2 Version 2  
Chandra X-Ray Center

L2 Processing Date : May 23 2012

## Contents

<b>1</b>	<b>Front</b>	<b>2</b>
<b>2</b>	<b>OBI</b>	<b>3</b>
2.1	OBI . . . . .	3
2.1.1	Images . . . . .	3
2.1.2	Bias . . . . .	3
2.1.3	Parameters . . . . .	4
2.1.4	Events . . . . .	4
2.2	Compared Parameters . . . . .	5
2.3	Star Slots . . . . .	6
2.4	FID Slots . . . . .	6
<b>A</b>	<b>Summary</b>	<b>7</b>
A.1	Status . . . . .	7
A.2	Comments . . . . .	7

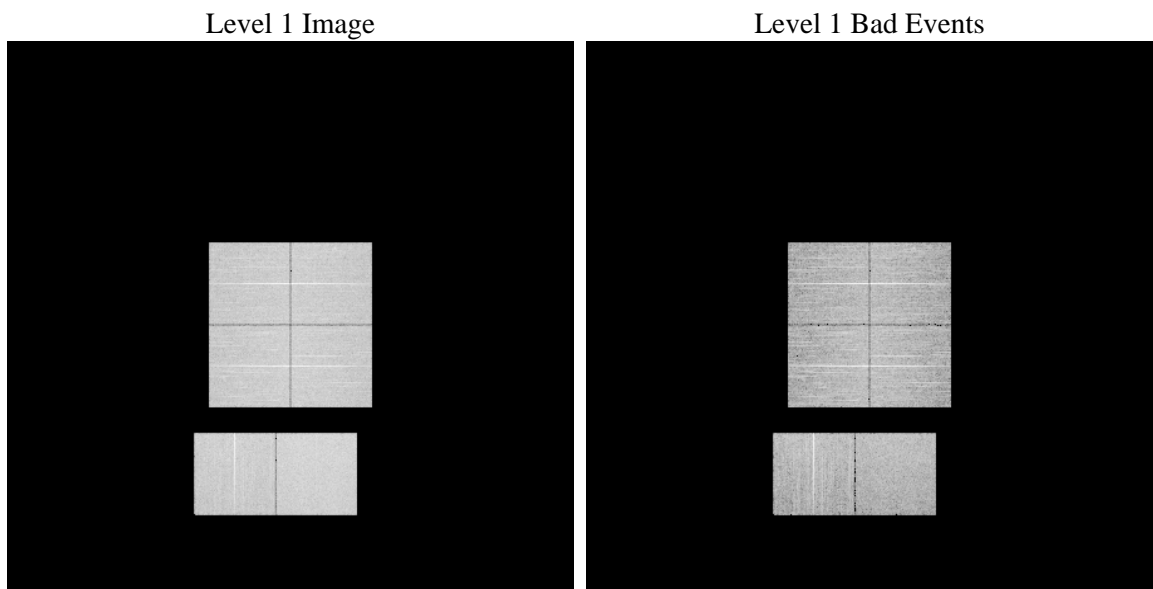
# 1 Front

seq_num	&#160	Sequence number
obs_id	57522	Observation id
title	ACIS-012367 diagnostics	Proposal title
observer	CHANDRA engineering request/realtime commanding	Principal investig
object	&#160	Source name
dtcycle	0	&#160
cycle	P	events from which exps? Prim/Second/Both
ra_targ	0.0	Observer's specified target RA [deg]
dec_targ	0.0	Observer's specified target Dec [deg]
ra_nom	64.969114743136	Nominal RA [deg]
dec_nom	32.011835952093	Nominal Dec [deg]
roll_nom	122.77313873193	Nominal Roll [deg]
revision	2	Processing version of data
ontime	7791.9999710321	Sum of GTIs [s]
livetime	7693.3329756198	Livetime [s]
ontime0	7791.9999710321	Sum of GTIs [s]
ontime1	7788.7590703368	Sum of GTIs [s]
ontime2	7791.9999710321	Sum of GTIs [s]
ontime3	7791.9999710321	Sum of GTIs [s]
ontime6	7791.9999710321	Sum of GTIs [s]
ontime7	7791.9999710321	Sum of GTIs [s]
l2events	509058	Number of level 2 events

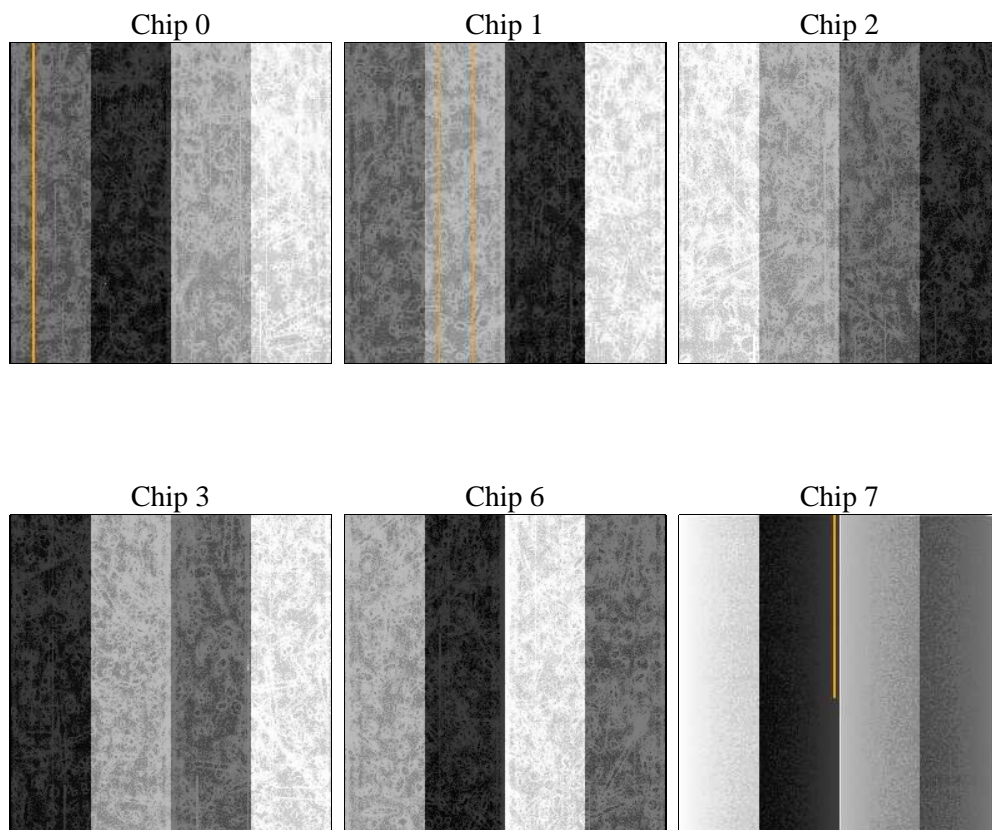
## 2 OBI

### 2.1 OBI

#### 2.1.1 Images



#### 2.1.2 Bias



### 2.1.3 Parameters

obi_num	0	Obi number	sched_exp_time	0.0	[s] Scheduled observation exposure time
ascdsver	8.4.4	Processing system revision	ontime	7791.9999710321	Sum of GTIs [s]
caldsver	4.4.9	&#160	ontime0	7791.9999710321	Sum of GTIs [s]
date	2012-05-23T14:43:44	Date and time of file creation	ontime1	7788.7590703368	Sum of GTIs [s]
revision	2	Processing version of data	ontime2	7791.9999710321	Sum of GTIs [s]
			ontime3	7791.9999710321	Sum of GTIs [s]
			ontime6	7791.9999710321	Sum of GTIs [s]
			ontime7	7791.9999710321	Sum of GTIs [s]
			l1events	945207	Number of level 1 events

### 2.1.4 Events

	ccd 0	ccd 1	ccd 2	ccd 3	ccd 6	ccd 7		ccd 0	ccd 1	ccd 2	ccd 3	ccd 6	ccd 7
level 1 events	147998	150119	154728	154930	155979	181453	grade 0 events	44259	44481	45365	46165	45551	23232
rejected events	65694	66420	71830	70712	69816	63253		29%	29%	29%	29%	29%	12%
rejected %	44%	44%	46%	45%	44%	34%	grade 1 events	325	279	373	336	293	171
								0%	0%	0%	0%	0%	0%
							grade 2 events	14839	15381	14035	14621	15231	25589
								10%	10%	9%	9%	9%	14%
							grade 3 events	5449	5587	5641	5682	5583	11236
								3%	3%	3%	3%	3%	6%
							grade 4 events	5472	5463	5621	5664	5564	10929
								3%	3%	3%	3%	3%	6%
							grade 5 events	3653	3948	3645	4232	4103	10559
								2%	2%	2%	2%	2%	5%
							grade 6 events	12319	12814	12268	12113	14272	47272
								8%	8%	7%	7%	9%	26%
							grade 7 events	61682	62166	67780	66117	65382	52465
								41%	41%	43%	42%	41%	28%

## 2.2 Compared Parameters

Parameter	Planned	Actual	Parameter	Planned	Actual
Instrument	ACIS	ACIS	Obspar format version number	7	7
Detector	ACIS-012367	ACIS-012367	Obspar file type	PREDICTED	ACTUAL
Grating	NONE	NONE	Obspar update status	NONE	UPDATED
Data mode	FAINT	FAINT	Number of optional ACIS chips dropped	0	0
Observation mode	SECONDARY	SECONDARY	On-chip summing requested	N	N
[deg] Pointing RA	0	64.96911474313643	Subarray requested	NONE	NONE
[deg] Pointing Dec	0	32.01183595209327	Alternating exposures requested	N	N
[deg] Pointing Roll	0.0	122.7731387319315	[s] Primary exposure time	3.2	3.2
[mm] SIM focus pos	-1.429586	-0.6828225247311905			
[mm] SIM defocus	0.1037507710433287	0.8505141146731063			
[mm] SIM translation stage pos	250.455976	250.466033080201			
[mm] SIM translation stage offset	0	-0.01005468664627074			
[s] Observation start time (MET)	342460585.940779	342460584.91577			
Observation start date	2008-11-07T15:56:26	2008-11-07T15:56:24			
[s] Observation end time (MET)	342495913.592521	342495912.56751			
Observation end date	2008-11-08T01:45:14	2008-11-08T01:45:12			
Read mode	TIMED	TIMED			

## **2.3 Star Slots**

## **2.4 FID Slots**

## A Summary

### A.1 Status

V&V Scientist	Jen Lauer
V&V Date (YYYY-MM-DD)	2012.05.31
V&V Edition	1
V&V Disposition and Status	OK
V&V Charge Time	7.7919999710321

### A.2 Comments