

V&V Reference Report

L2 ASCDS Version : 8.4.4

Observation 57302 - L2 Version 2
Chandra X-Ray Center

L2 Processing Date : May 30 2012

Contents

| | | |
|----------|-------------------------------|----------|
| 1 | Front | 2 |
| 2 | OBI | 3 |
| 2.1 | OBI | 3 |
| 2.1.1 | Images | 3 |
| 2.1.2 | Bias | 3 |
| 2.1.3 | Parameters | 4 |
| 2.1.4 | Events | 4 |
| 2.2 | Compared Parameters | 5 |
| 2.3 | Star Slots | 6 |
| 2.4 | FID Slots | 6 |
| A | Summary | 7 |
| A.1 | Status | 7 |
| A.2 | Comments | 7 |

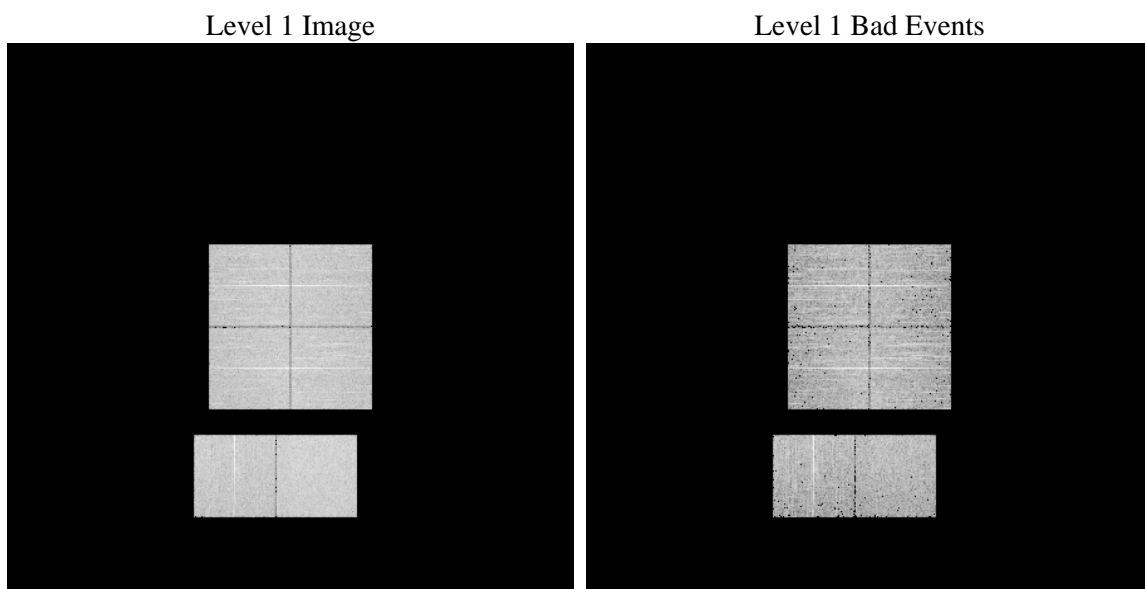
1 Front

| | | |
|----------|---|---|
| seq_num | | Sequence number |
| obs_id | 57302 | Observation id |
| title | ACIS-012367 diagnostics | Proposal title |
| observer | CHANDRA engineering request/realtime commanding | Principal investig |
| object | | Source name |
| dtcycle | 0 | |
| cycle | P | events from which exps? Prim/Second/Both |
| ra_targ | 0.0 | Observer's specified target RA [deg] |
| dec_targ | 0.0 | Observer's specified target Dec [deg] |
| ra_nom | 141.52767520074 | Nominal RA [deg] |
| dec_nom | -10.49070186678 | Nominal Dec [deg] |
| roll_nom | 346.08465295278 | Nominal Roll [deg] |
| revision | 2 | Processing version of data |
| ontime | 3743.9999861121 | Sum of GTIs [s] |
| livetime | 3696.5912039218 | Livetime [s] |
| ontime0 | 3743.9999861121 | Sum of GTIs [s] |
| ontime1 | 3743.9999861121 | Sum of GTIs [s] |
| ontime2 | 3743.9999861121 | Sum of GTIs [s] |
| ontime3 | 3743.9999861121 | Sum of GTIs [s] |
| ontime6 | 3743.9999861121 | Sum of GTIs [s] |
| ontime7 | 3743.9999861121 | Sum of GTIs [s] |
| l2events | 229372 | Number of level 2 events |

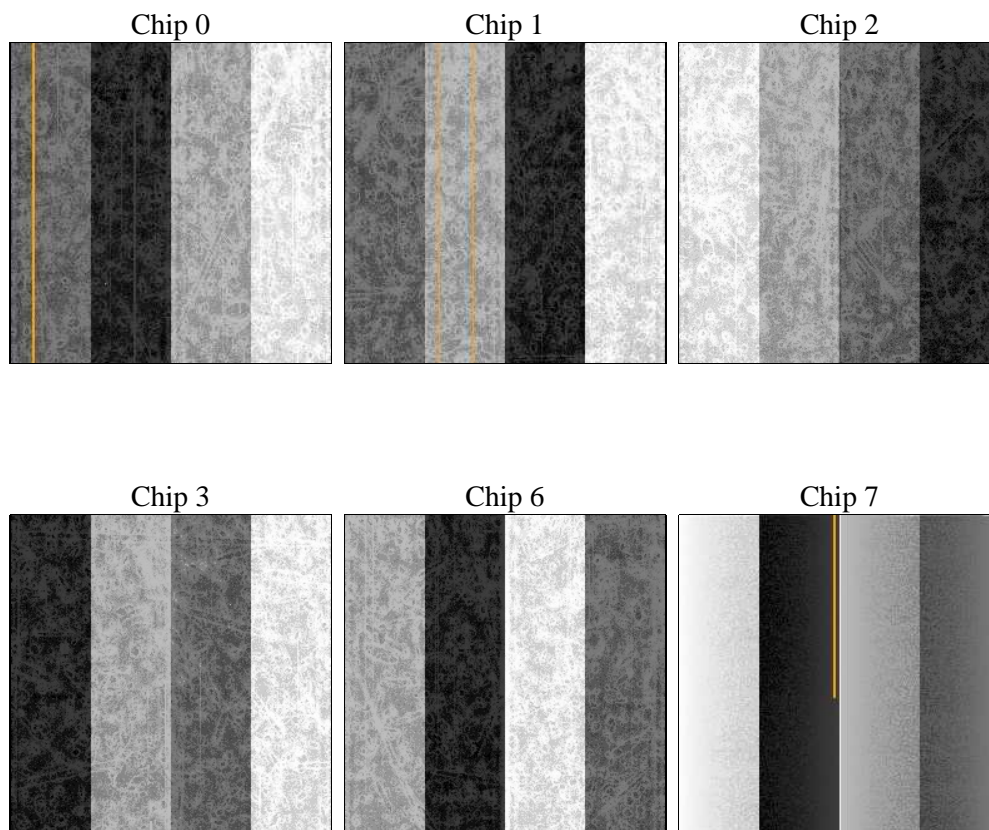
2 OBI

2.1 OBI

2.1.1 Images



2.1.2 Bias



2.1.3 Parameters

| | | | | | |
|----------|---------------------|--------------------------------|----------------|-----------------|---|
| obi_num | 0 | Obi number | sched_exp_time | 0.0 | [s] Scheduled observation exposure time |
| ascdsver | 8.4.4 | Processing system revision | ontime | 3743.9999861121 | Sum of GTIs [s] |
| caldsver | 4.4.9 | | ontime0 | 3743.9999861121 | Sum of GTIs [s] |
| date | 2012-05-31T02:24:23 | Date and time of file creation | ontime1 | 3743.9999861121 | Sum of GTIs [s] |
| revision | 2 | Processing version of data | ontime2 | 3743.9999861121 | Sum of GTIs [s] |
| | | | ontime3 | 3743.9999861121 | Sum of GTIs [s] |
| | | | ontime6 | 3743.9999861121 | Sum of GTIs [s] |
| | | | ontime7 | 3743.9999861121 | Sum of GTIs [s] |
| | | | l1events | 447595 | Number of level 1 events |

2.1.4 Events

| | ccd 0 | ccd 1 | ccd 2 | ccd 3 | ccd 6 | ccd 7 | | ccd 0 | ccd 1 | ccd 2 | ccd 3 | ccd 6 | ccd 7 |
|-----------------|-------|-------|-------|-------|-------|-------|----------------|-------|-------|-------|-------|-------|-------|
| level 1 events | 72783 | 69184 | 71339 | 74231 | 73360 | 86698 | grade 0 events | 19904 | 19622 | 20429 | 20510 | 20162 | 9974 |
| rejected events | 35604 | 31698 | 34127 | 36857 | 34431 | 32394 | | 27% | 28% | 28% | 27% | 27% | 11% |
| rejected % | 48% | 45% | 47% | 49% | 46% | 37% | grade 1 events | 135 | 112 | 143 | 180 | 110 | 73 |
| | | | | | | | | 0% | 0% | 0% | 0% | 0% | 0% |
| | | | | | | | grade 2 events | 6611 | 7083 | 6316 | 6341 | 7159 | 11916 |
| | | | | | | | | 9% | 10% | 8% | 8% | 9% | 13% |
| | | | | | | | grade 3 events | 2465 | 2464 | 2499 | 2511 | 2522 | 4944 |
| | | | | | | | | 3% | 3% | 3% | 3% | 3% | 5% |
| | | | | | | | grade 4 events | 2536 | 2466 | 2515 | 2573 | 2647 | 4795 |
| | | | | | | | | 3% | 3% | 3% | 3% | 3% | 5% |
| | | | | | | | grade 5 events | 1886 | 1911 | 1789 | 2049 | 1944 | 5063 |
| | | | | | | | | 2% | 2% | 2% | 2% | 2% | 5% |
| | | | | | | | grade 6 events | 5699 | 5880 | 5489 | 5472 | 6465 | 22714 |
| | | | | | | | | 7% | 8% | 7% | 7% | 8% | 26% |
| | | | | | | | grade 7 events | 33547 | 29646 | 32159 | 34595 | 32351 | 27219 |
| | | | | | | | | 46% | 42% | 45% | 46% | 44% | 31% |

2.2 Compared Parameters

| Parameter | Planned | Actual | Parameter | Planned | Actual |
|-----------------------------------|---------------------|----------------------|---------------------------------------|-----------|---------|
| Instrument | ACIS | ACIS | Obspar format version number | 7 | 7 |
| Detector | ACIS-012367 | ACIS-012367 | Obspar file type | PREDICTED | ACTUAL |
| Grating | NONE | NONE | Obspar update status | NONE | UPDATED |
| Data mode | FAINT | FAINT | Number of optional ACIS chips dropped | 0 | 0 |
| Observation mode | SECONDARY | SECONDARY | On-chip summing requested | N | N |
| [deg] Pointing RA | 0 | 141.5276752007364 | Subarray requested | NONE | NONE |
| [deg] Pointing Dec | 0 | -10.49070186678042 | Alternating exposures requested | N | N |
| [deg] Pointing Roll | 0.0 | 346.0846529527781 | [s] Primary exposure time | 3.2 | 3.2 |
| [mm] SIM focus pos | -1.429586 | -0.6828225247311905 | | | |
| [mm] SIM defocus | 0.1037507710433287 | 0.8505141146731063 | | | |
| [mm] SIM translation stage pos | 250.455976 | 250.466033080201 | | | |
| [mm] SIM translation stage offset | 0 | -0.01005468664627074 | | | |
| [s] Observation start time (MET) | 350959603.461085 | 350959602.43608 | | | |
| Observation start date | 2009-02-14T00:46:43 | 2009-02-14T00:46:42 | | | |
| [s] Observation end time (MET) | 350968133.511508 | 350968132.4865 | | | |
| Observation end date | 2009-02-14T03:08:54 | 2009-02-14T03:08:52 | | | |
| Read mode | TIMED | TIMED | | | |

2.3 Star Slots

2.4 FID Slots

A Summary

A.1 Status

| | |
|----------------------------|-----------------|
| V&V Scientist | Joy Nichols |
| V&V Date (YYYY-MM-DD) | 2012.06.05 |
| V&V Edition | 1 |
| V&V Disposition and Status | OK |
| V&V Charge Time | 3.7439999861121 |

A.2 Comments