

V&V Reference Report

L2 ASCDS Version : 8.4.5

Observation 57142 - L2 Version 2
Chandra X-Ray Center

L2 Processing Date : Jun 6 2012

Contents

1	Front	2
2	OBI	3
2.1	OBI	3
2.1.1	Images	3
2.1.2	Bias	3
2.1.3	Parameters	4
2.1.4	Events	4
2.2	Compared Parameters	5
2.3	Star Slots	6
2.4	FID Slots	6
A	Summary	7
A.1	Status	7
A.2	Comments	7

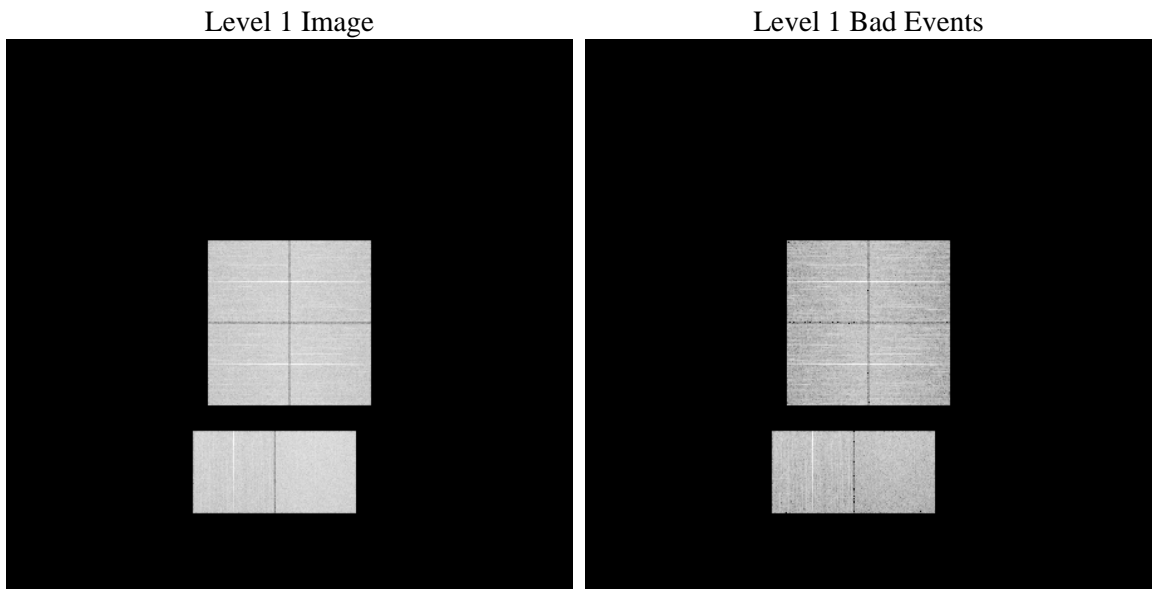
1 Front

seq_num	 	Sequence number
obs_id	57142	Observation id
title	ACIS-012367 diagnostics	Proposal title
observer	CHANDRA engineering request/realtime commanding	Principal investig
object	 	Source name
dtcycle	0	
cycle	P	events from which exps? Prim/Second/Both
ra_targ	0.0	Observer's specified target RA [deg]
dec_targ	0.0	Observer's specified target Dec [deg]
ra_nom	199.03462209292	Nominal RA [deg]
dec_nom	-34.201945934975	Nominal Dec [deg]
roll_nom	323.26669983619	Nominal Roll [deg]
revision	2	Processing version of data
ontime	7628.7999716401	Sum of GTIs [s]
livetime	7532.1995128873	Livetime [s]
ontime0	7628.7999716401	Sum of GTIs [s]
ontime1	7628.7999716401	Sum of GTIs [s]
ontime2	7628.7999716401	Sum of GTIs [s]
ontime3	7625.5589712858	Sum of GTIs [s]
ontime6	7628.7999716401	Sum of GTIs [s]
ontime7	7628.7999716401	Sum of GTIs [s]
l2events	457325	Number of level 2 events

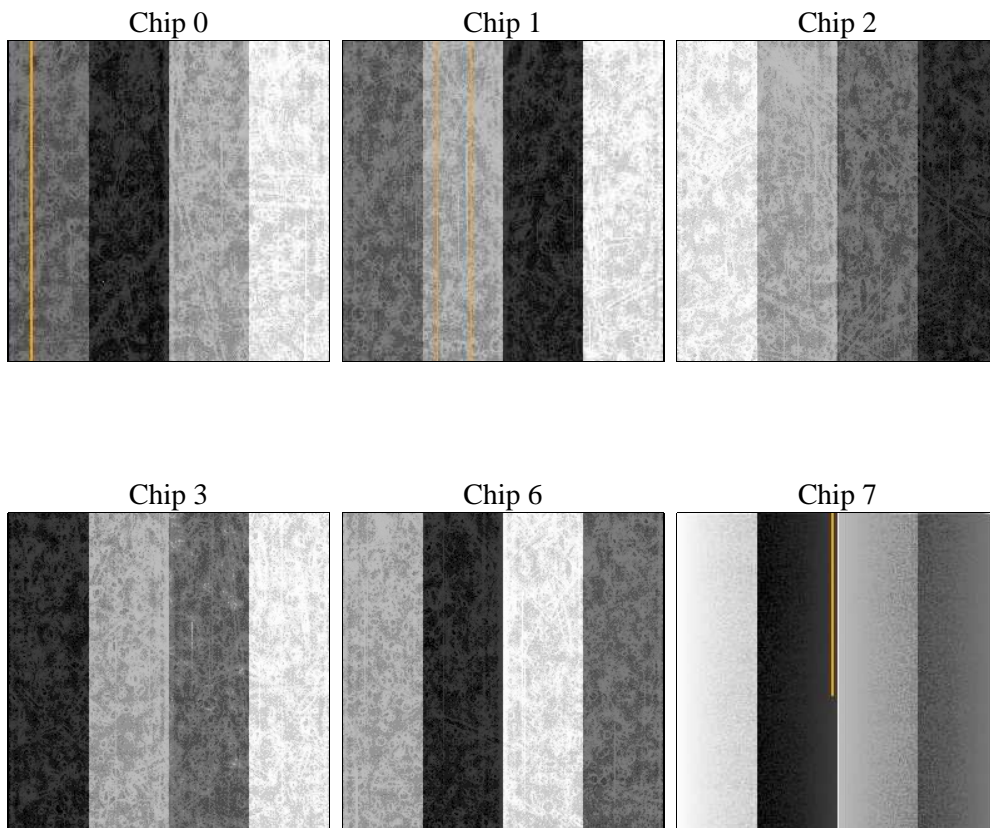
2 OBI

2.1 OBI

2.1.1 Images



2.1.2 Bias



2.1.3 Parameters

obi_num	0	Obi number	sched_exp_time	0.0	[s] Scheduled observation exposure time
ascdsver	8.4.5	Processing system revision	ontime	7628.7999716401	Sum of GTIs [s]
caldsver	4.4.10	 	ontime0	7628.7999716401	Sum of GTIs [s]
date	2012-06-06T10:10:25	Date and time of file creation	ontime1	7628.7999716401	Sum of GTIs [s]
revision	2	Processing version of data	ontime2	7628.7999716401	Sum of GTIs [s]
			ontime3	7625.5589712858	Sum of GTIs [s]
			ontime6	7628.7999716401	Sum of GTIs [s]
			ontime7	7628.7999716401	Sum of GTIs [s]
			l1events	898963	Number of level 1 events

2.1.4 Events

	ccd 0	ccd 1	ccd 2	ccd 3	ccd 6	ccd 7		ccd 0	ccd 1	ccd 2	ccd 3	ccd 6	ccd 7
level 1 events	141234	140610	142538	146547	151255	176779	grade 0 events	39553	38765	40171	40752	40298	20390
rejected events	67276	66562	68636	71707	74329	66942		28%	27%	28%	27%	26%	11%
rejected %	47%	47%	48%	48%	49%	37%	grade 1 events	296	235	348	331	274	170
								0%	0%	0%	0%	0%	0%
							grade 2 events	13431	13821	12766	13209	13679	23559
								9%	9%	8%	9%	9%	13%
							grade 3 events	5035	4920	5063	5043	4918	10286
								3%	3%	3%	3%	3%	5%
							grade 4 events	4853	4964	4903	5124	4964	10117
								3%	3%	3%	3%	3%	5%
							grade 5 events	3786	3956	3575	4252	4281	10876
								2%	2%	2%	2%	2%	6%
							grade 6 events	11122	11610	11033	10742	13101	45524
								7%	8%	7%	7%	8%	25%
							grade 7 events	63158	62339	64679	67094	69740	55857
								44%	44%	45%	45%	46%	31%

2.2 Compared Parameters

Parameter	Planned	Actual	Parameter	Planned	Actual
Instrument	ACIS	ACIS	Obspar format version number	7	7
Detector	ACIS-012367	ACIS-012367	Obspar file type	PREDICTED	ACTUAL
Grating	NONE	NONE	Obspar update status	NONE	UPDATED
Data mode	FAINT	FAINT	Number of optional ACIS chips dropped	0	0
Observation mode	SECONDARY	SECONDARY	On-chip summing requested	N	N
[deg] Pointing RA	0	199.0346220929205	Subarray requested	NONE	NONE
[deg] Pointing Dec	0	-34.20194593497484	Alternating exposures requested	N	N
[deg] Pointing Roll	0.0	323.266699836188	[s] Primary exposure time	3.2	3.2
[mm] SIM focus pos	-1.429586	-0.7809083437167272			
[mm] SIM defocus	0.1037507710433287	0.7524282956875696			
[mm] SIM translation stage pos	250.455976	250.4635187648994			
[mm] SIM translation stage offset	0	-0.007540371344731511			
[s] Observation start time (MET)	357128535.517653	357128534.49267			
Observation start date	2009-04-26T10:22:16	2009-04-26T10:22:14			
[s] Observation end time (MET)	357141011.818274	357141010.79329			
Observation end date	2009-04-26T13:50:12	2009-04-26T13:50:10			
Read mode	TIMED	TIMED			

2.3 Star Slots

2.4 FID Slots

A Summary

A.1 Status

V&V Scientist	Beth Sundheim
V&V Date (YYYY-MM-DD)	2012.06.08
V&V Edition	1
V&V Disposition and Status	OK
V&V Charge Time	7.6287999716401

A.2 Comments