

V&V Reference Report

L2 ASCDS Version : 8.4.5

Observation 56802 - L2 Version 2
Chandra X-Ray Center

L2 Processing Date : Jun 14 2012

Contents

1	Front	2
2	OBI	3
2.1	OBI	3
2.1.1	Images	3
2.1.2	Bias	3
2.1.3	Parameters	4
2.1.4	Events	4
2.2	Compared Parameters	5
2.3	Star Slots	6
2.4	FID Slots	6
A	Summary	7
A.1	Status	7
A.2	Comments	7

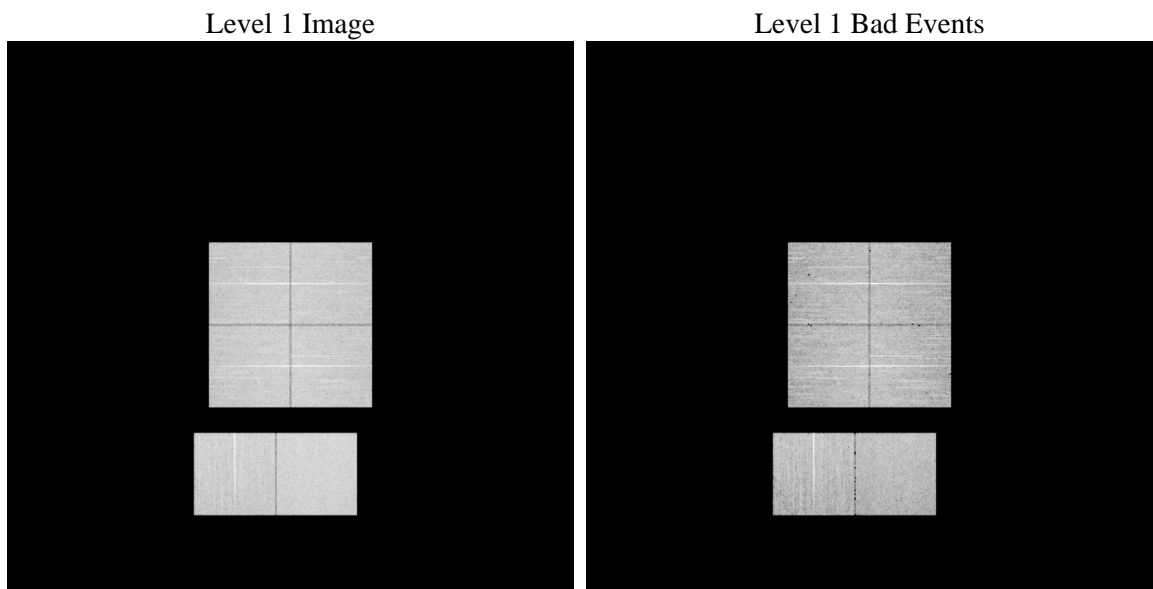
1 Front

seq_num	 	Sequence number
obs_id	56802	Observation id
title	ACIS-012367 diagnostics	Proposal title
observer	CHANDRA engineering request/realtime commanding	Principal investig
object	 	Source name
dtcycle	0	
cycle	P	events from which exps? Prim/Second/Both
ra_targ	0.0	Observer's specified target RA [deg]
dec_targ	0.0	Observer's specified target Dec [deg]
ra_nom	26.218997857309	Nominal RA [deg]
dec_nom	3.5969951259848	Nominal Dec [deg]
roll_nom	100.34003977639	Nominal Roll [deg]
revision	2	Processing version of data
ontime	7990.399970293	Sum of GTIs [s]
livetime	7889.220714628	Livetime [s]
ontime0	7990.399970293	Sum of GTIs [s]
ontime1	7990.399970293	Sum of GTIs [s]
ontime2	7990.399970293	Sum of GTIs [s]
ontime3	7990.399970293	Sum of GTIs [s]
ontime6	7990.399970293	Sum of GTIs [s]
ontime7	7990.399970293	Sum of GTIs [s]
l2events	460779	Number of level 2 events

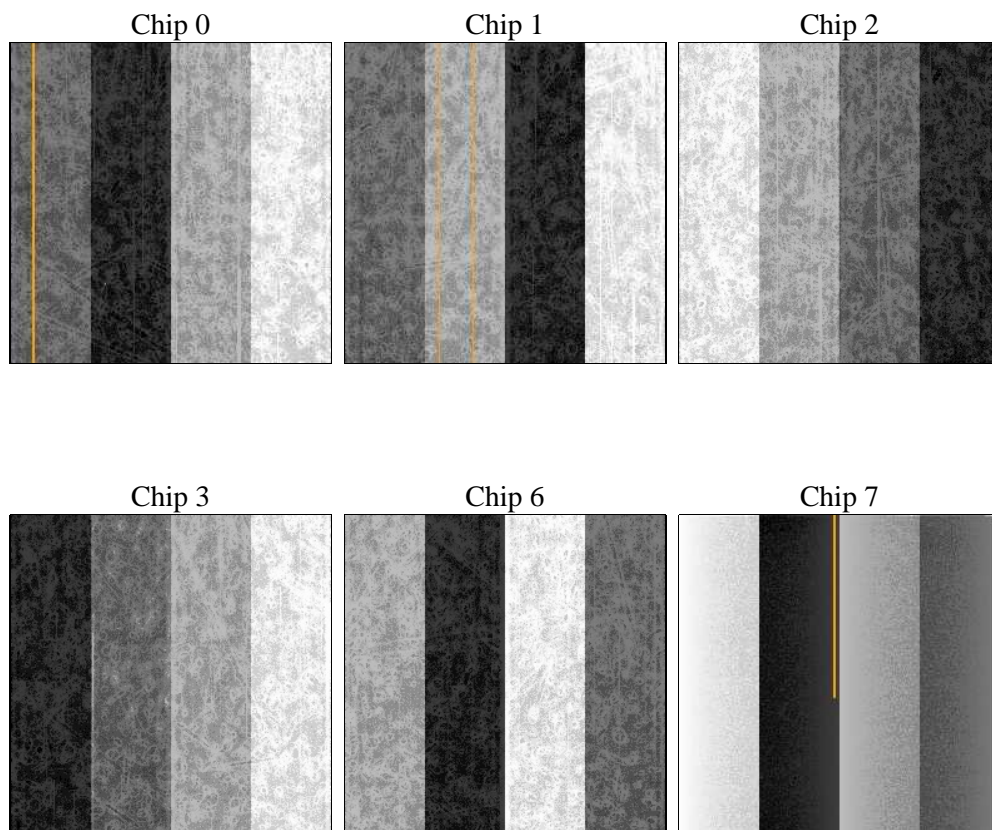
2 OBI

2.1 OBI

2.1.1 Images



2.1.2 Bias



2.1.3 Parameters

obi_num	0	Obi number	sched_exp_time	0.0	[s] Scheduled observation exposure time
ascdsver	8.4.5	Processing system revision	ontime	7990.399970293	Sum of GTIs [s]
caldsver	4.4.10	 	ontime0	7990.399970293	Sum of GTIs [s]
date	2012-06-14T13:05:26	Date and time of file creation	ontime1	7990.399970293	Sum of GTIs [s]
revision	2	Processing version of data	ontime2	7990.399970293	Sum of GTIs [s]
			ontime3	7990.399970293	Sum of GTIs [s]
			ontime6	7990.399970293	Sum of GTIs [s]
			ontime7	7990.399970293	Sum of GTIs [s]
			l1events	956694	Number of level 1 events

2.1.4 Events

	ccd 0	ccd 1	ccd 2	ccd 3	ccd 6	ccd 7		ccd 0	ccd 1	ccd 2	ccd 3	ccd 6	ccd 7
level 1 events	149068	147215	153281	157901	161657	187572	grade 0 events	41023	40304	41289	42396	41764	21400
rejected events	75062	72624	79695	82364	83707	75913		27%	27%	26%	26%	25%	11%
rejected %	50%	49%	51%	52%	51%	40%	grade 1 events	302	244	341	353	275	160
								0%	0%	0%	0%	0%	0%
							grade 2 events	13994	14627	13269	13441	14533	25305
								9%	9%	8%	8%	8%	13%
							grade 3 events	5020	5161	5241	5411	5443	10672
								3%	3%	3%	3%	3%	5%
							grade 4 events	4925	4970	5275	5309	5273	10402
								3%	3%	3%	3%	3%	5%
							grade 5 events	4305	4299	3869	4543	4498	11493
								2%	2%	2%	2%	2%	6%
							grade 6 events	12035	12585	11434	11973	14072	48172
								8%	8%	7%	7%	8%	25%
							grade 7 events	67464	65025	72563	74475	75799	59968
								45%	44%	47%	47%	46%	31%

2.2 Compared Parameters

Parameter	Planned	Actual	Parameter	Planned	Actual
Instrument	ACIS	ACIS	Obspar format version number	7	7
Detector	ACIS-012367	ACIS-012367	Obspar file type	PREDICTED	ACTUAL
Grating	NONE	NONE	Obspar update status	OVERRIDE	OVERRIDE
Data mode	FAINT	FAINT	Number of optional ACIS chips dropped	0	0
Observation mode	SECONDARY	SECONDARY	On-chip summing requested	N	N
[deg] Pointing RA	0	26.21899785730857	Subarray requested	NONE	NONE
[deg] Pointing Dec	0	3.596995125984826	Alternating exposures requested	N	N
[deg] Pointing Roll	0.0	100.3400397763933	[s] Primary exposure time	3.2	3.2
[mm] SIM focus pos	-0.68282252473119	-0.68282252473119			
[mm] SIM defocus	0.8505140384245534	0.8505140384245534			
[mm] SIM translation stage pos	250.4635187649	250.4635187649			
[mm] SIM translation stage offset	-0.007542945905271381	-0.007542945905271381			
[s] Observation start time (MET)	370566335.38958	370566335.38958			
Observation start date	2009-09-28T23:05:35	2009-09-28T23:05:35			
[s] Observation end time (MET)	370575884.39888	370575884.39888			
Observation end date	2009-09-29T01:44:44	2009-09-29T01:44:44			
Read mode	TIMED	TIMED			

2.3 Star Slots

2.4 FID Slots

A Summary

A.1 Status

V&V Scientist	Beth Sundheim
V&V Date (YYYY-MM-DD)	2012.06.18
V&V Edition	1
V&V Disposition and Status	OK
V&V Charge Time	7.990399970293

A.2 Comments