

V&V Reference Report

L2 ASCDS Version : 8.4.5

Observation 56752 - L2 Version 2
Chandra X-Ray Center

L2 Processing Date : Jun 15 2012

Contents

1	Front	2
2	OBI	3
2.1	OBI	3
2.1.1	Images	3
2.1.2	Bias	3
2.1.3	Parameters	4
2.1.4	Events	4
2.2	Compared Parameters	5
2.3	Star Slots	6
2.4	FID Slots	6
A	Summary	7
A.1	Status	7
A.2	Comments	7

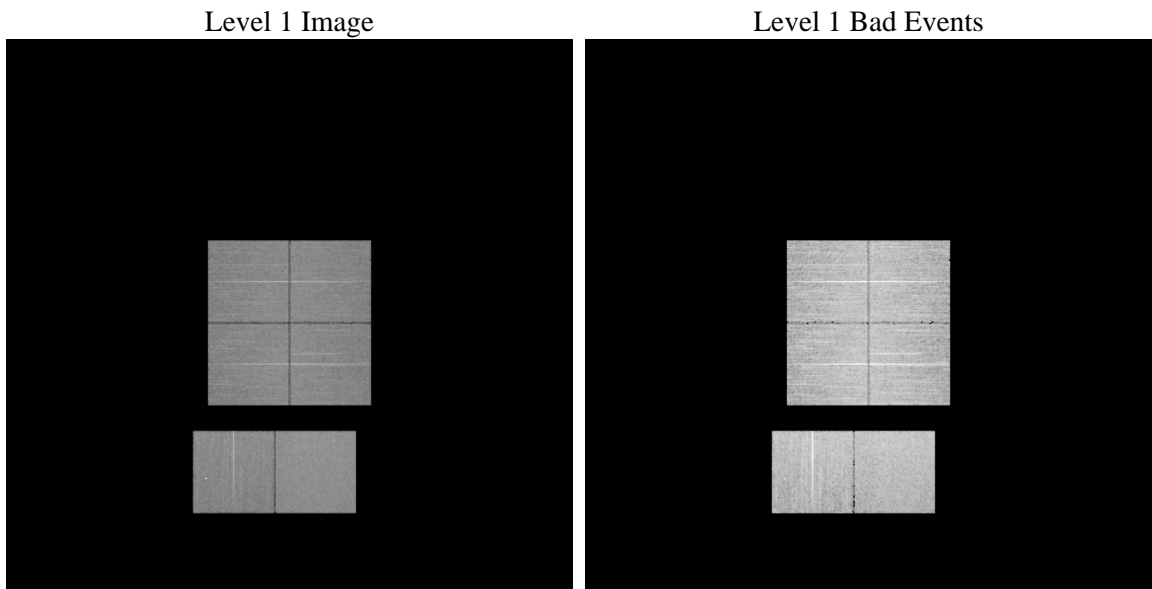
1 Front

seq_num	 	Sequence number
obs_id	56752	Observation id
title	ACIS-012367 diagnostics	Proposal title
observer	CHANDRA engineering request/realtime commanding	Principal investig
object	 	Source name
dtcycle	0	
cycle	P	events from which exps? Prim/Second/Both
ra_targ	0.0	Observer's specified target RA [deg]
dec_targ	0.0	Observer's specified target Dec [deg]
ra_nom	41.973333674218	Nominal RA [deg]
dec_nom	23.511886521037	Nominal Dec [deg]
roll_nom	121.87738950363	Nominal Roll [deg]
revision	2	Processing version of data
ontime	8271.999969244	Sum of GTIs [s]
livetime	8167.254924833	Livetime [s]
ontime0	8271.999969244	Sum of GTIs [s]
ontime1	8271.999969244	Sum of GTIs [s]
ontime2	8271.999969244	Sum of GTIs [s]
ontime3	8271.999969244	Sum of GTIs [s]
ontime6	8271.999969244	Sum of GTIs [s]
ontime7	8271.999969244	Sum of GTIs [s]
l2events	450420	Number of level 2 events

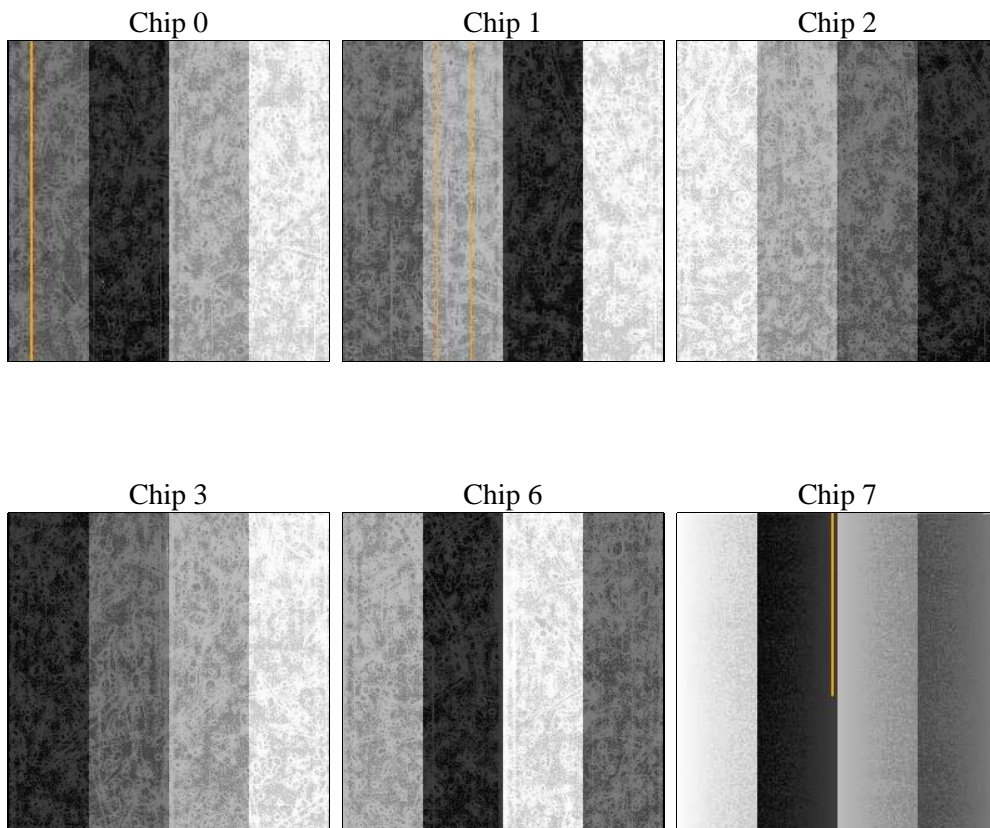
2 OBI

2.1 OBI

2.1.1 Images



2.1.2 Bias



2.1.3 Parameters

obi_num	0	Obi number	sched_exp_time	0.0	[s] Scheduled observation exposure time
ascdsver	8.4.5	Processing system revision	ontime	8271.999969244	Sum of GTIs [s]
caldsver	4.4.10	 	ontime0	8271.999969244	Sum of GTIs [s]
date	2012-06-15T15:54:33	Date and time of file creation	ontime1	8271.999969244	Sum of GTIs [s]
revision	2	Processing version of data	ontime2	8271.999969244	Sum of GTIs [s]
			ontime3	8271.999969244	Sum of GTIs [s]
			ontime6	8271.999969244	Sum of GTIs [s]
			ontime7	8271.999969244	Sum of GTIs [s]
			l1events	931632	Number of level 1 events

2.1.4 Events

	ccd 0	ccd 1	ccd 2	ccd 3	ccd 6	ccd 7		ccd 0	ccd 1	ccd 2	ccd 3	ccd 6	ccd 7
level 1 events	145967	147414	149186	149808	154288	184969	grade 0 events	38103	37843	38995	39398	41395	20357
rejected events	74052	74589	77039	77254	76989	73101		26%	25%	26%	26%	26%	11%
rejected %	50%	50%	51%	51%	49%	39%	grade 1 events	310	251	304	310	251	183
								0%	0%	0%	0%	0%	0%
							grade 2 events	13011	13811	12529	12637	13677	24278
								8%	9%	8%	8%	8%	13%
							grade 3 events	5001	4984	4949	4991	4949	10355
								3%	3%	3%	3%	3%	5%
							grade 4 events	4913	4861	5060	4999	4912	10236
								3%	3%	3%	3%	3%	5%
							grade 5 events	4162	4378	3802	4651	4682	11921
								2%	2%	2%	3%	3%	6%
							grade 6 events	10887	11326	10614	10529	12395	46642
								7%	7%	7%	7%	8%	25%
							grade 7 events	69580	69960	72933	72293	72027	60997
								47%	47%	48%	48%	46%	32%

2.2 Compared Parameters

Parameter	Planned	Actual	Parameter	Planned	Actual
Instrument	ACIS	ACIS	Obspar format version number	7	7
Detector	ACIS-012367	ACIS-012367	Obspar file type	PREDICTED	ACTUAL
Grating	NONE	NONE	Obspar update status	NONE	UPDATED
Data mode	FAINT	FAINT	Number of optional ACIS chips dropped	0	0
Observation mode	SECONDARY	SECONDARY	On-chip summing requested	N	N
[deg] Pointing RA	0	41.97333367421828	Subarray requested	NONE	NONE
[deg] Pointing Dec	0	23.5118865210369	Alternating exposures requested	N	N
[deg] Pointing Roll	0.0	121.8773895036275	[s] Primary exposure time	3.2	3.2
[mm] SIM focus pos	-1.429586	-0.6828225247311905			
[mm] SIM defocus	0.1037507710433287	0.8505141146731063			
[mm] SIM translation stage pos	250.455976	250.466033080201			
[mm] SIM translation stage offset	0	-0.01005468664627074			
[s] Observation start time (MET)	371937086.408551	371937085.38354			
Observation start date	2009-10-14T19:51:26	2009-10-14T19:51:25			
[s] Observation end time (MET)	371954546.25943	371954545.23442			
Observation end date	2009-10-15T00:42:26	2009-10-15T00:42:25			
Read mode	TIMED	TIMED			

2.3 Star Slots

2.4 FID Slots

A Summary

A.1 Status

V&V Scientist	Jen Lauer
V&V Date (YYYY-MM-DD)	2012.06.19
V&V Edition	1
V&V Disposition and Status	OK
V&V Charge Time	8.271999969244

A.2 Comments