

V&V Reference Report

L2 ASCDS Version : 7.6.7

Observation 5632 - L2 Version 002
Chandra X-Ray Center

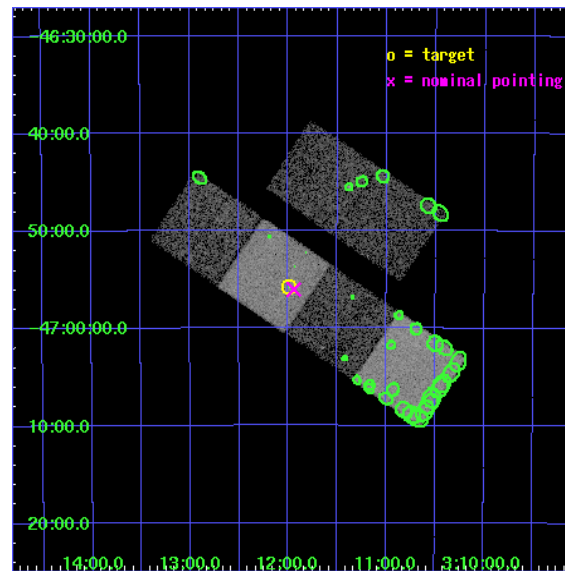
L2 Processing Date: Feb 28 2006

Contents

1	Front	2
2	OBI	3
2.1	OBI	3
2.1.1	Images	3
2.1.2	Bias	3
2.1.3	Parameters	4
2.1.4	Events	4
2.2	Compared Parameters	5
2.3	Aspect	6
2.4	Star Slots	9
2.4.1	Slot 3	9
2.4.2	Slot 4	10
2.4.3	Slot 5	11
2.4.4	Slot 6	12
2.4.5	Slot 7	13
2.5	FID Slots	14
2.5.1	Slot 0	14
2.5.2	Slot 1	15
2.5.3	Slot 2	16
3	Point Sources	17
A	Summary	18
A.1	Status	18
A.2	Comments	18

1 Front

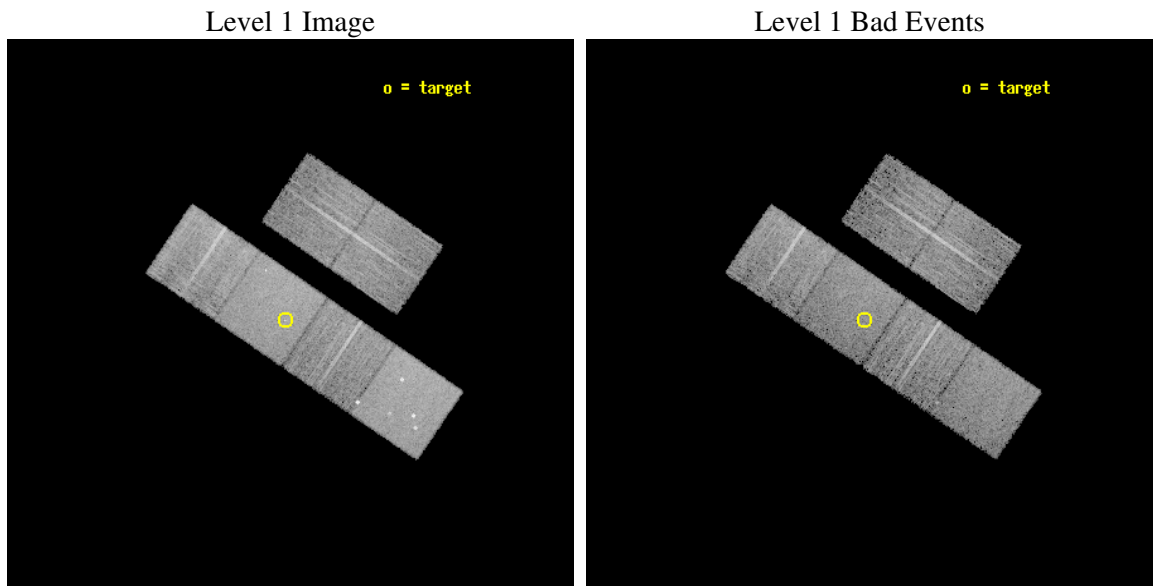
seq_num	701055
obs_id	5632
title	THE X-RAY PROPERTIES OF HIGHER REDSHIFT RED AGN
observer	Dr. Belinda Wilkes
object	2MASS 031159-465548
dtcycle	0
cycle	P
ra_targ	47.998333
dec_targ	-46.93
ra_nom	47.985351843235
dec_nom	-46.933915425484
roll_nom	214.24797520418
revision	2
ontime	7753.5999711156
liveltime	7655.4192196239
ontime2	7753.5999711156
ontime3	7753.5999711156
ontime5	7753.5999711156
ontime6	7753.5999711156
ontime7	7753.5999711156
ontime8	7750.3589908481
l2events	92526



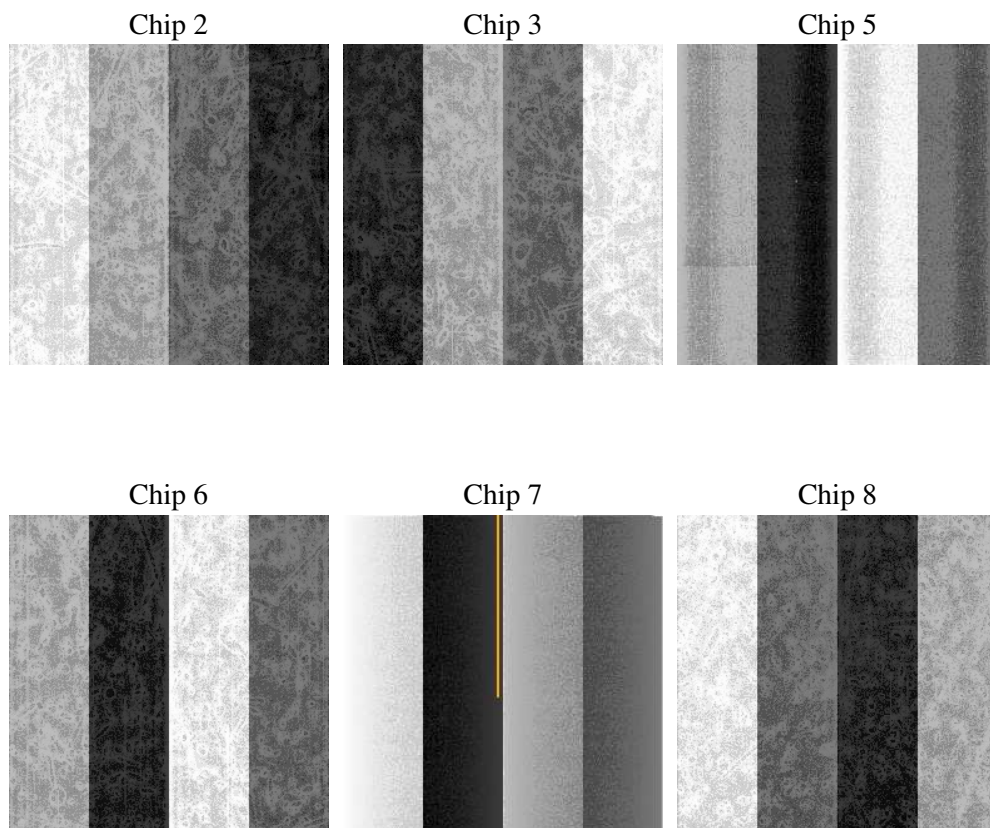
2 OBI

2.1 OBI

2.1.1 Images



2.1.2 Bias



2.1.3 Parameters

obi_num	1
ascdsver	7.6.7
caldbver	3.2.1
date	2006-02-28T16:52:44
revision	2

sched_exp_time	8000.000000
ontime	7758.9643923938
ontime2	7758.9643923938
ontime3	7758.9643923938
ontime5	7758.9643923938
ontime6	7758.9643923938
ontime7	7758.9643923938
ontime8	7755.7233125865
l1events	425716

2.1.4 Events

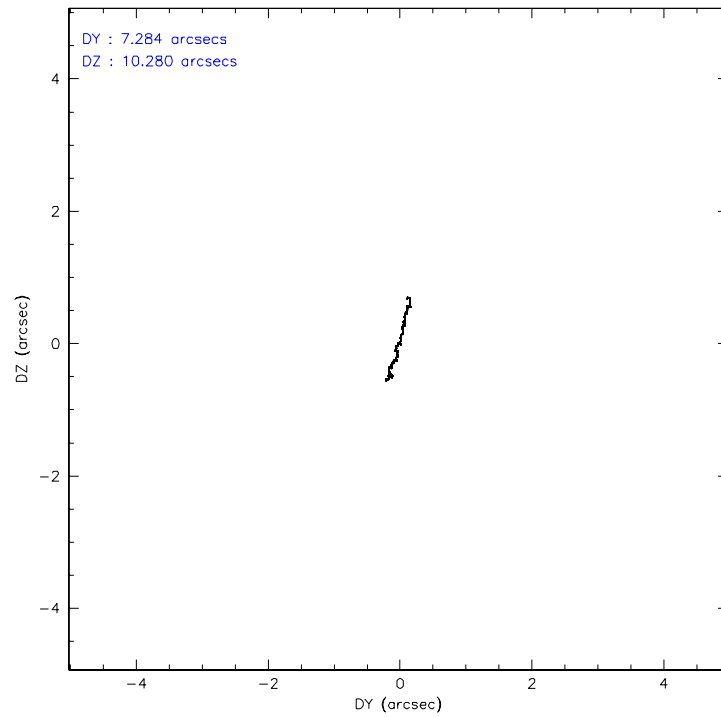
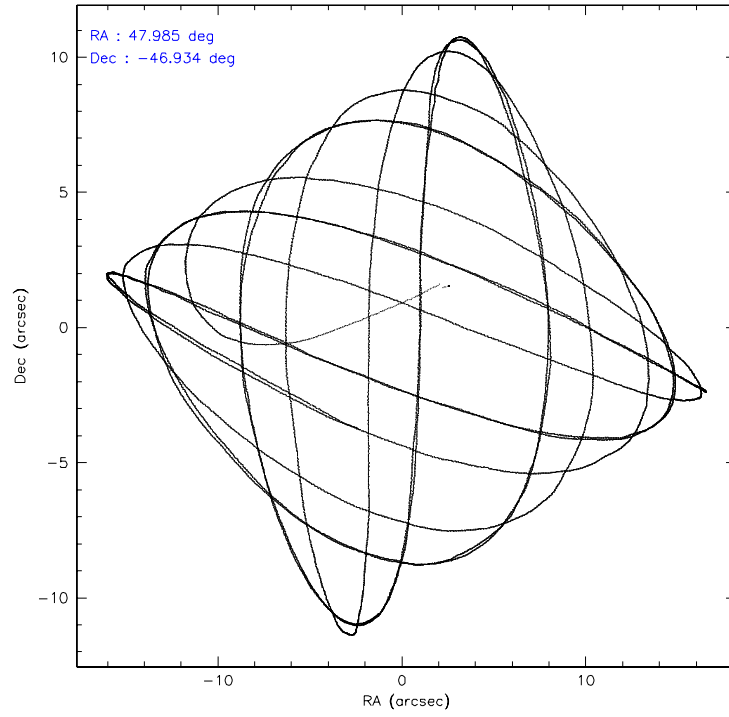
	ccd 2	ccd 3	ccd 5	ccd 6	ccd 7	ccd 8
level 1 events	60011	56399	90087	59569	81399	78251
rejected events	52912	49576	49403	52431	50427	61558
rejected %	88%	87%	54%	88%	61%	78%

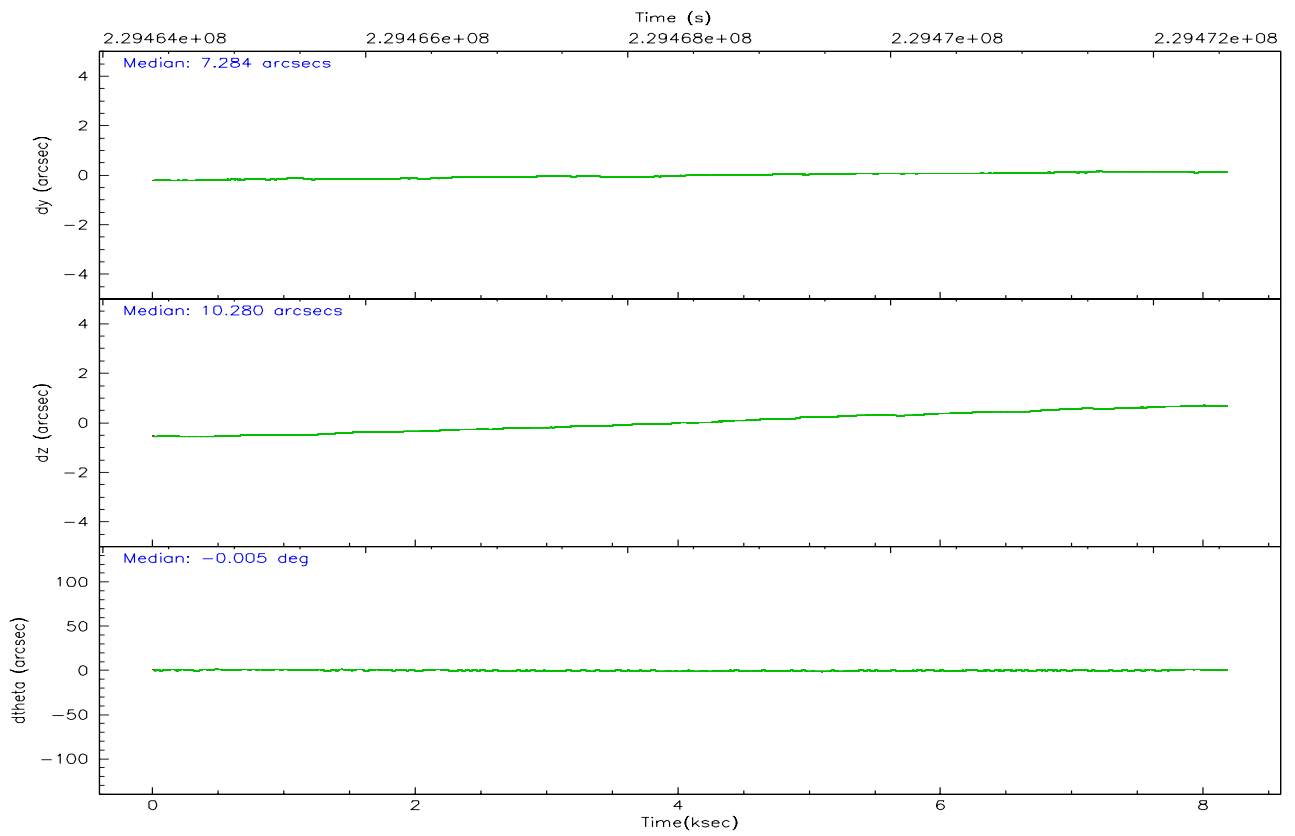
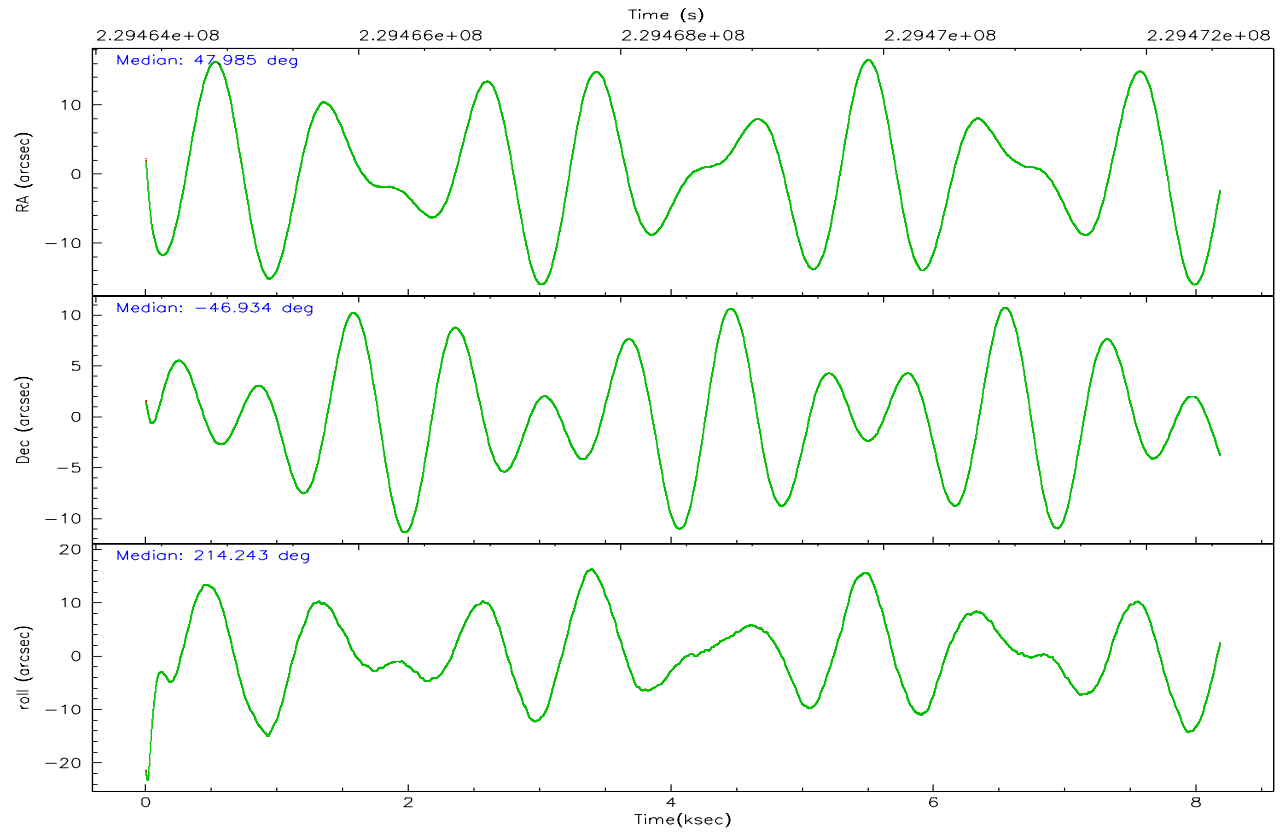
	ccd 2	ccd 3	ccd 5	ccd 6	ccd 7	ccd 8
grade 0 events	3138	3010	4345	2869	1767	5227
	5%	5%	4%	4%	2%	6%
grade 1 events	25	30	135	34	52	61
	0%	0%	0%	0%	0%	0%
grade 2 events	1377	1286	12009	1495	7719	3683
	2%	2%	13%	2%	9%	4%
grade 3 events	702	681	886	724	1558	1759
	1%	1%	0%	1%	1%	2%
grade 4 events	674	673	934	708	1502	1667
	1%	1%	1%	1%	1%	2%
grade 5 events	2418	2643	4383	2743	5457	3670
	4%	4%	4%	4%	6%	4%
grade 6 events	1216	1180	22552	1348	18456	4360
	2%	2%	25%	2%	22%	5%
grade 7 events	50461	46896	44843	49648	44888	57824
	84%	83%	49%	83%	55%	73%

2.2 Compared Parameters

Parameter	Planned	Actual	Parameter	Planned	Actual
Instrument	ACIS	ACIS	Obspar format version number	6	6
Detector	ACIS-235678	ACIS-235678	Obspar file type	PREDICTED	ACTUAL
Grating	NONE	NONE	Obspar update status	NONE	UPDATED
Data mode	FAINT	FAINT	On-chip summing requested	N	N
Observation mode	POINTING	POINTING	Subarray requested	NONE	NONE
Pointing RA	48.002244	47.98535184323513	Alternating exposures requested	N	N
Pointing Dec	-46.909275	-46.93391542548366	Primary exposure time	0.000000	3.2
Pointing Roll	214.103748	214.2479752041802			
SIM focus pos (mm)	-0.684267	-0.6828225247311905			
SIM defocus (mm)	0	0.001444936568705701			
SIM translation stage pos (mm)	-190.132523	-190.1400660498719			
SIM translation stage offset (mm)	0	0.00754346686406393			
Observation start time	229464569.184000	229463566.06093			
Observation start date	2005-04-09T20:08:25	2005-04-09T19:52:46			
Observation end time	229472569.184000	229473585.43639			
Observation end date	2005-04-09T22:21:45	2005-04-09T22:39:45			
Read mode	TIMED	TIMED			

2.3 Aspect



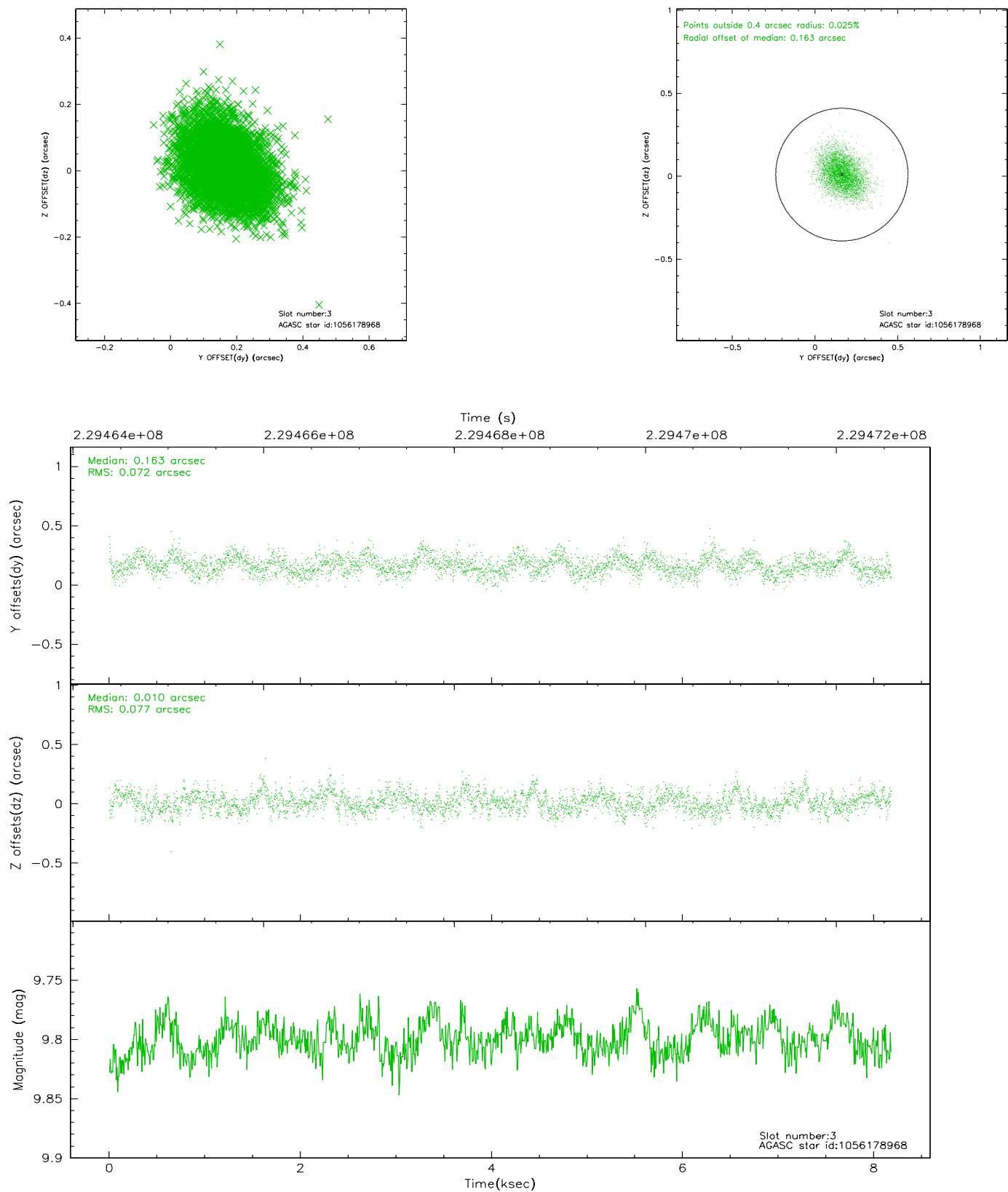


Slot Statistics

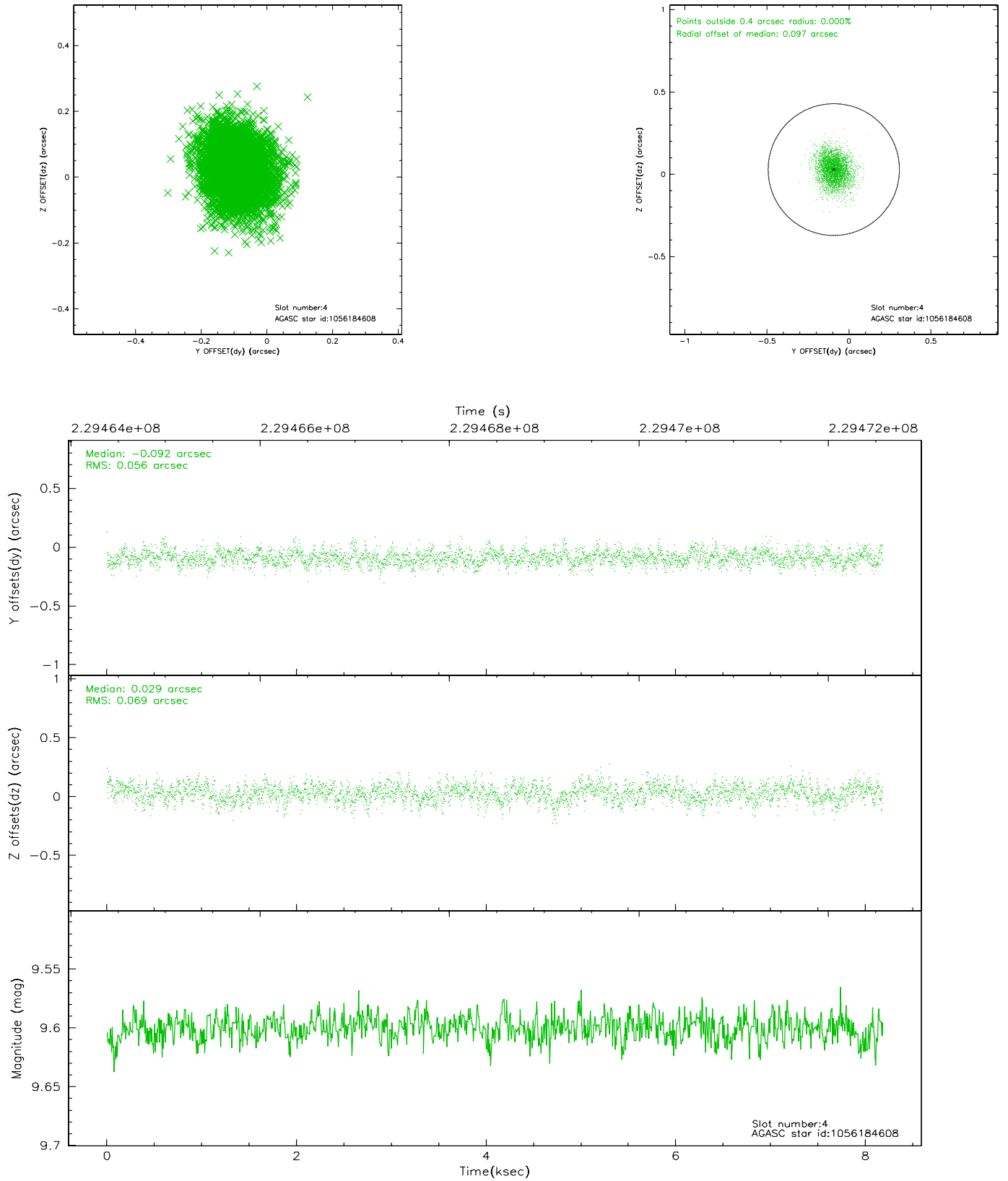
slot	status	id	mag	n_pts	med_dy	med_dz	dr1	dr2	ra	dec	mean_y	mean_z
0	FID	ACIS-S-2	7.10	1996	-0.042	-0.004	0.009	0.017	0.000000	0.000000	-760.02	-1731.59
1	FID	ACIS-S-4	7.21	1996	0.061	0.021	0.006	0.012	0.000000	0.000000	2153.00	176.27
2	FID	ACIS-S-5	7.23	1996	-0.051	-0.009	0.007	0.011	0.000000	0.000000	-1812.04	170.61
3	GUIDE	1056178968	9.80	3985	0.163	0.010	0.112	0.184	47.434855	-46.868743	1077.96	-899.06
4	GUIDE	1056184608	9.60	3988	-0.092	0.029	0.094	0.154	47.567919	-46.566080	199.75	-1623.01
5	GUIDE	1056186576	7.30	3992	-0.054	0.035	0.054	0.086	47.768072	-46.350534	-645.03	-1991.04
6	GUIDE	1056187616	8.11	3992	0.026	-0.039	0.098	0.140	48.113529	-46.490360	-1073.31	-1093.91
7	GUIDE	1056572016	9.81	3988	-0.042	-0.034	0.109	0.177	47.961471	-47.634233	1545.19	2105.91

2.4 Star Slots

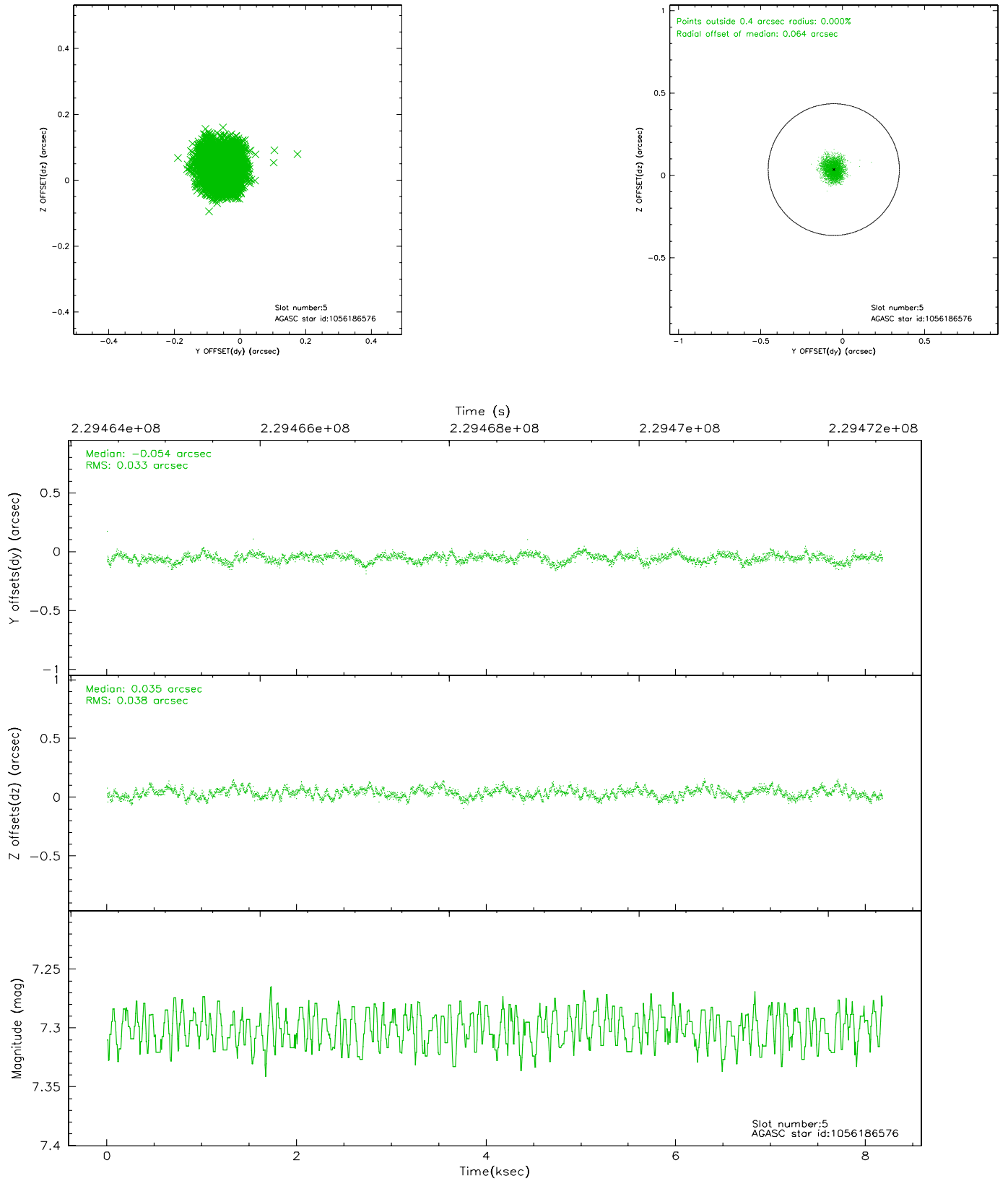
2.4.1 Slot 3



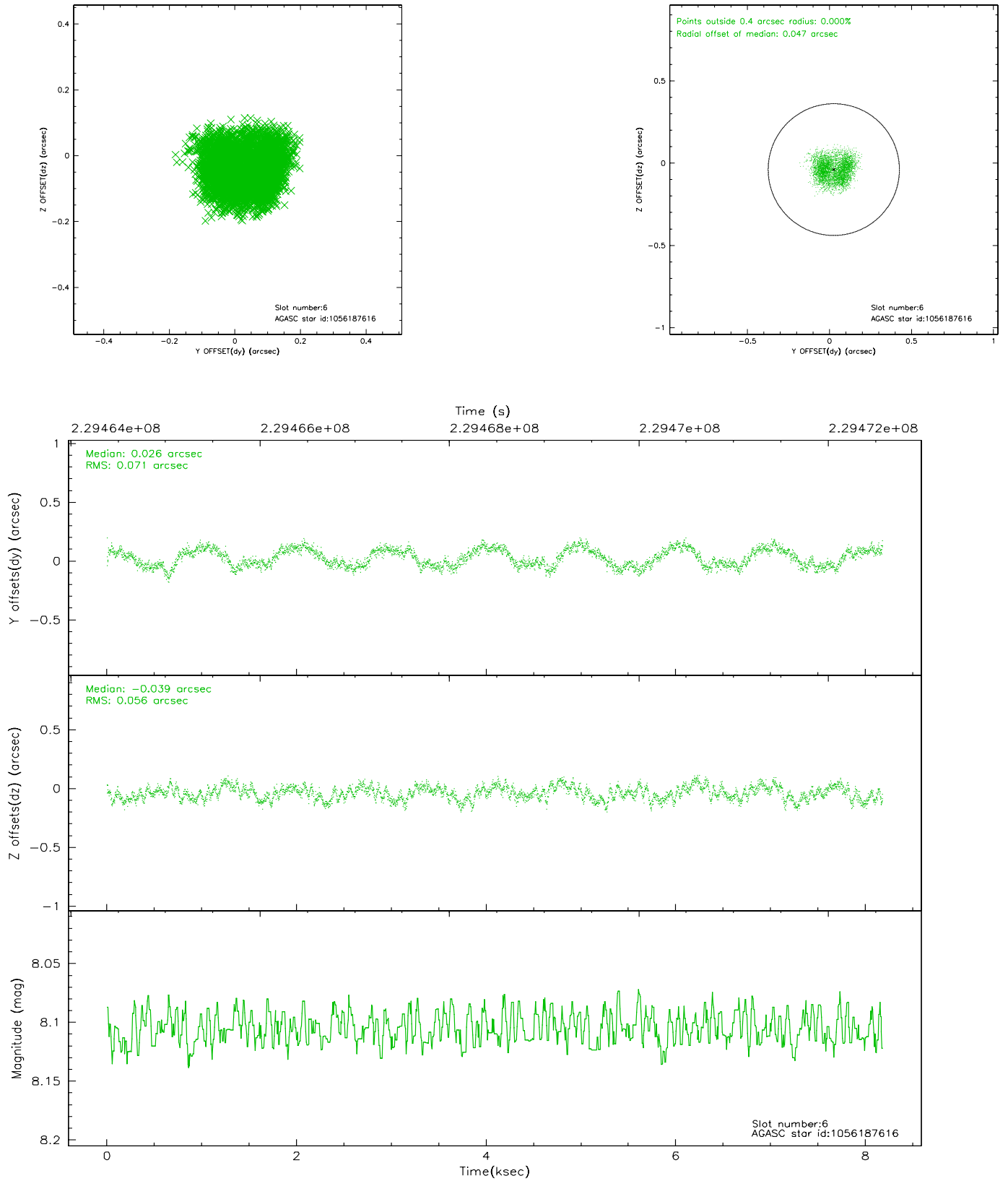
2.4.2 Slot 4



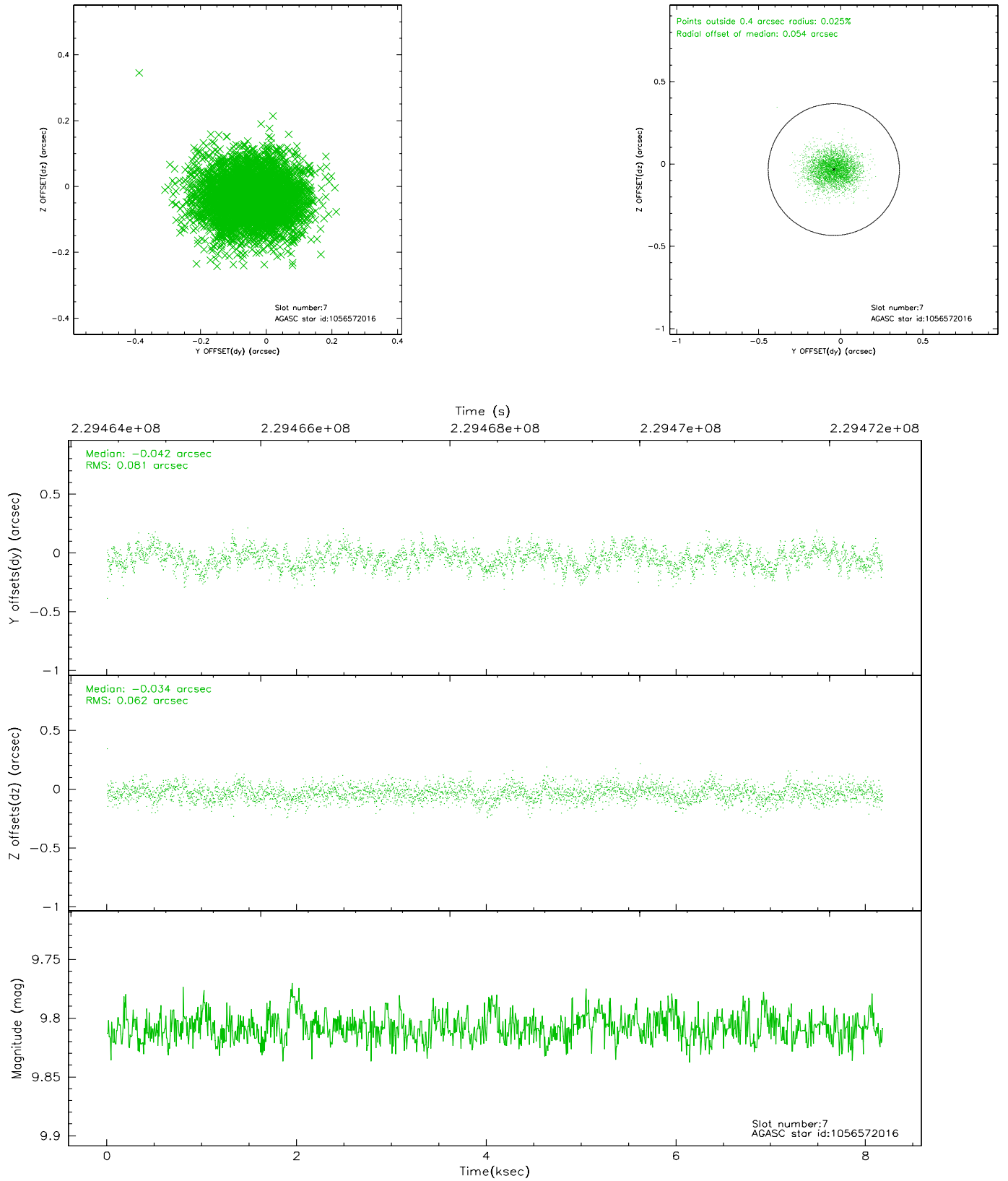
2.4.3 Slot 5



2.4.4 Slot 6

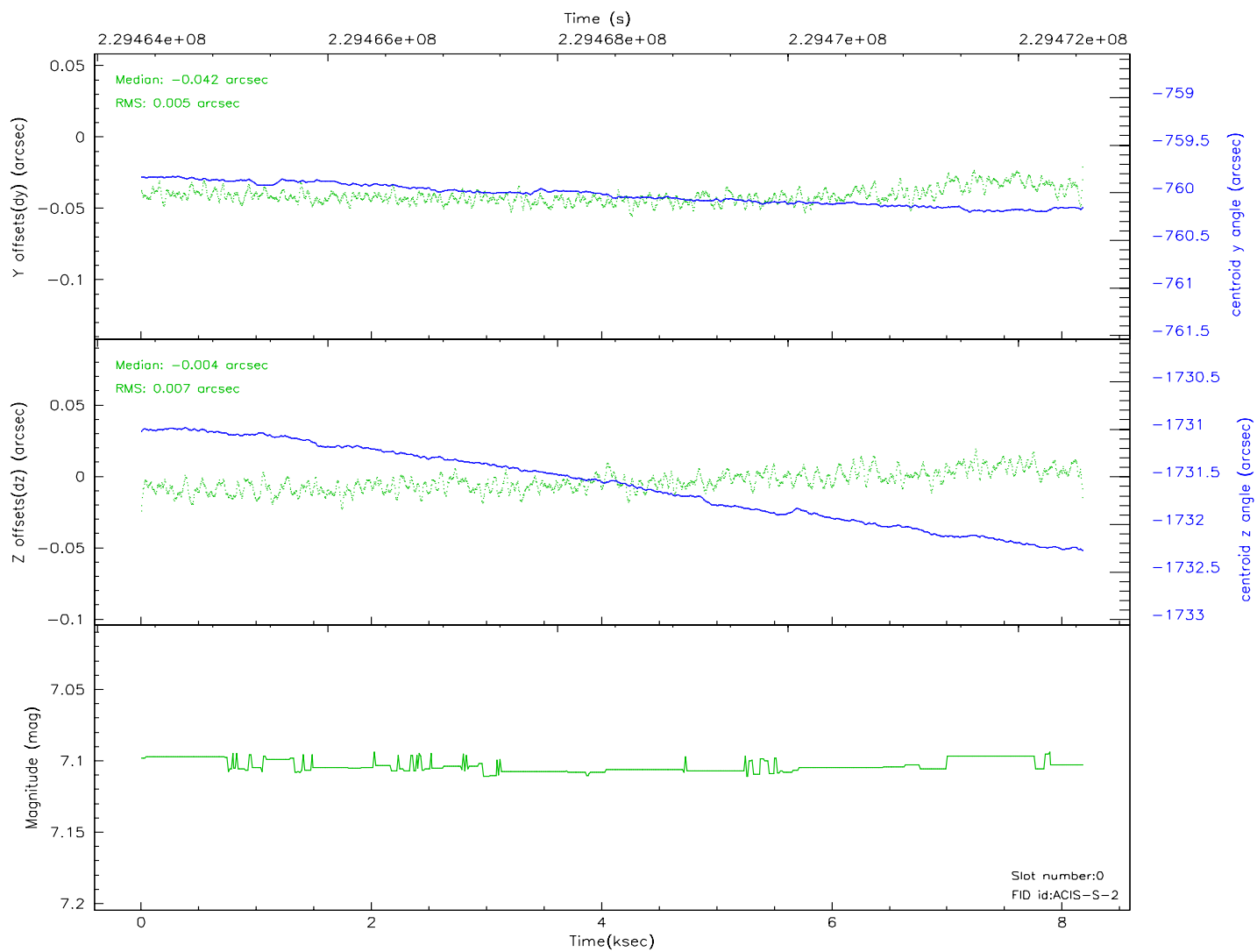
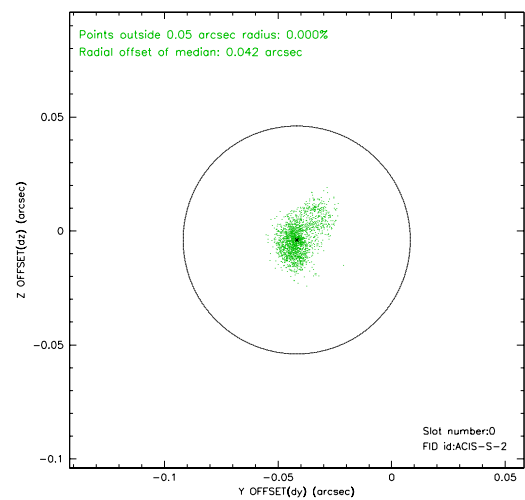
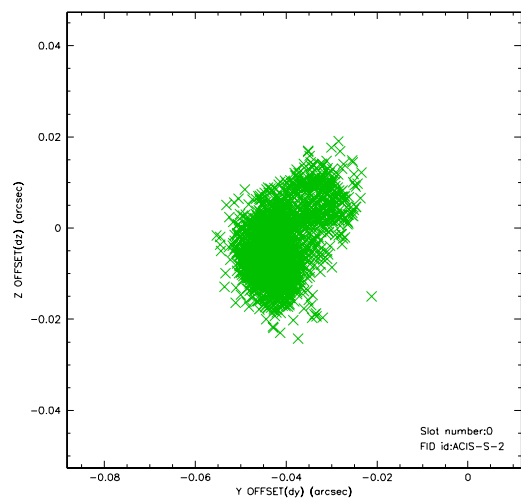


2.4.5 Slot 7

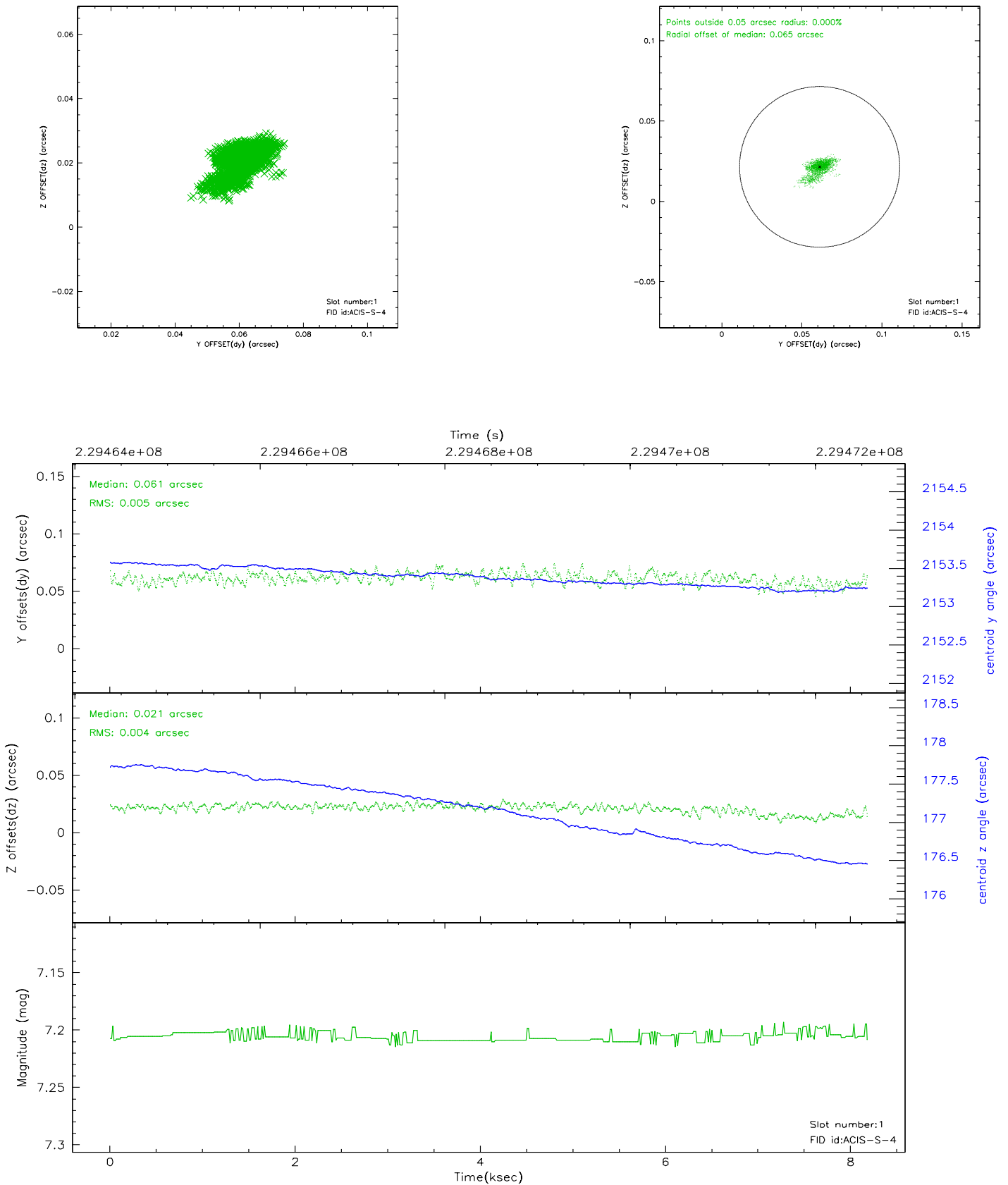


2.5 FID Slots

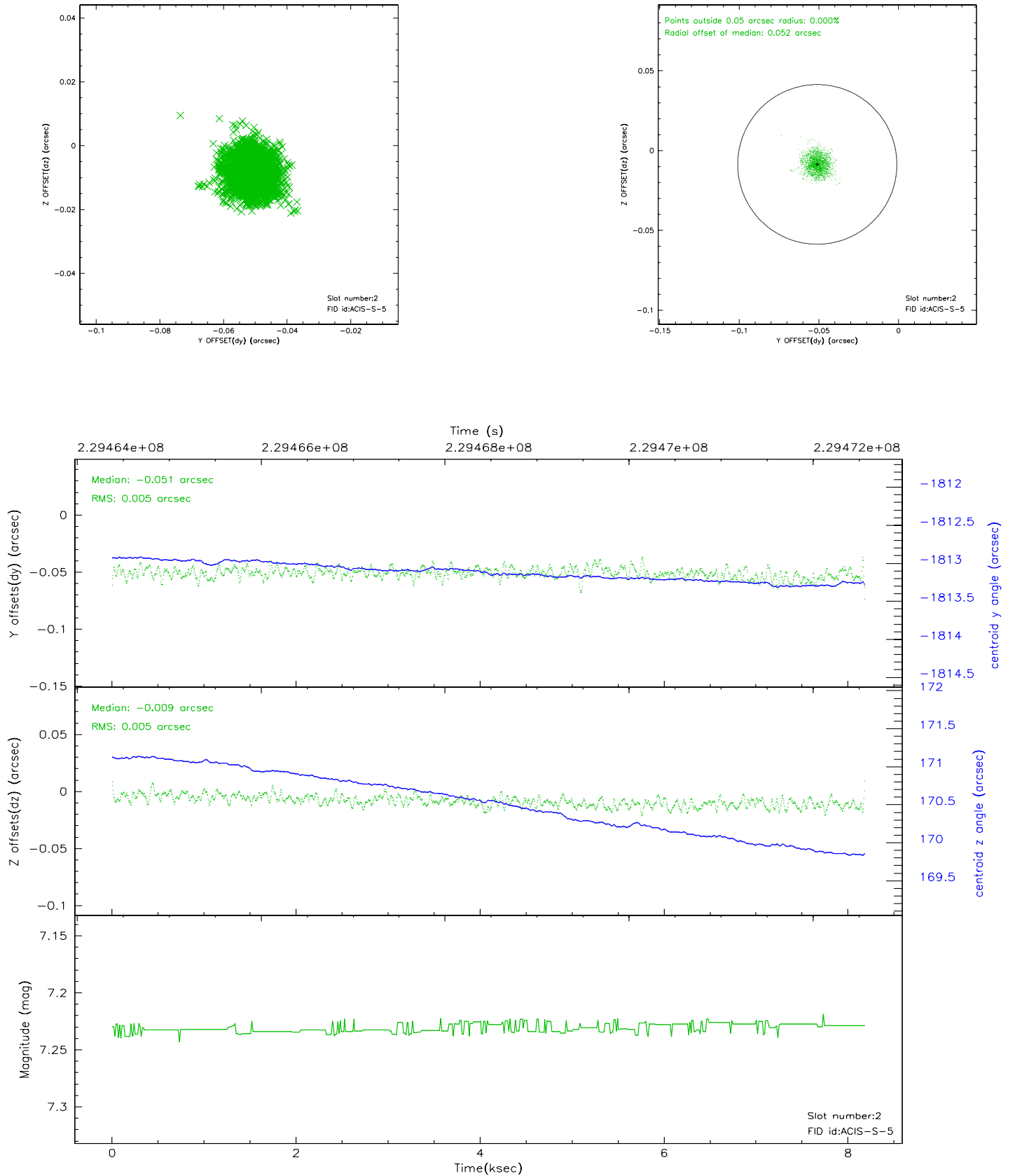
2.5.1 Slot 0



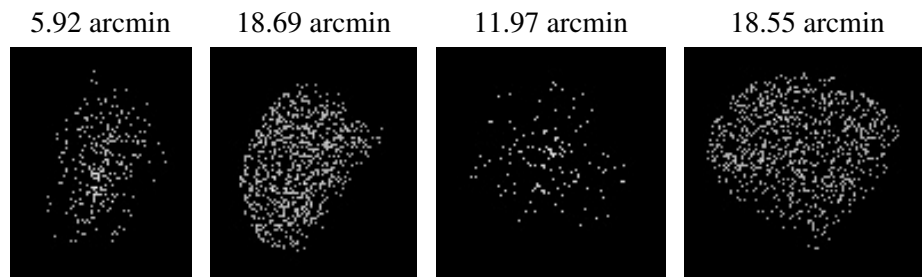
2.5.2 Slot 1



2.5.3 Slot 2



3 Point Sources



A Summary

A.1 Status

V&V Scientist	Beth Sundheim
V&V Date (YYYY-MM-DD)	2006.02.28
V&V Edition	1
V&V Disposition and Status	OK
V&V Charge Time	7.753599

A.2 Comments