

V&V Reference Report

L2 ASCDS Version : 7.6.7

Observation 5612 - L2 Version 002
Chandra X-Ray Center

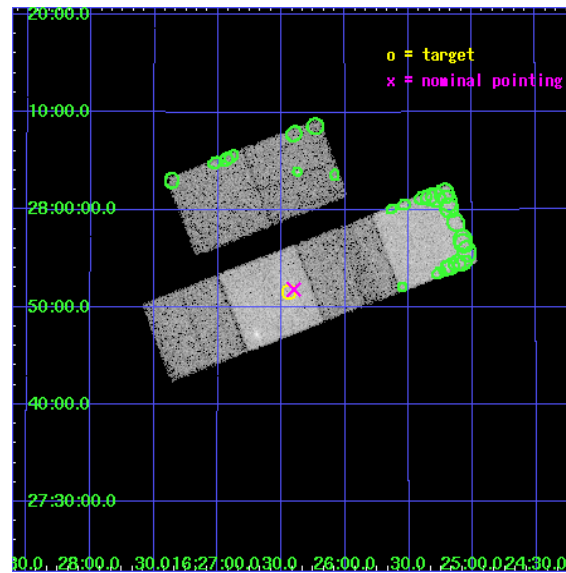
L2 Processing Date: Mar 3 2006

Contents

1	Front	2
2	OBI	3
2.1	OBI	3
2.1.1	Images	3
2.1.2	Bias	3
2.1.3	Parameters	4
2.1.4	Events	4
2.2	Compared Parameters	5
2.3	Aspect	6
2.4	Star Slots	9
2.4.1	Slot 3	9
2.4.2	Slot 4	10
2.4.3	Slot 5	11
2.4.4	Slot 6	12
2.4.5	Slot 7	13
2.5	FID Slots	14
2.5.1	Slot 0	14
2.5.2	Slot 1	15
2.5.3	Slot 2	16
3	Point Sources	17
A	Summary	18
A.1	Status	18
A.2	Comments	18

1 Front

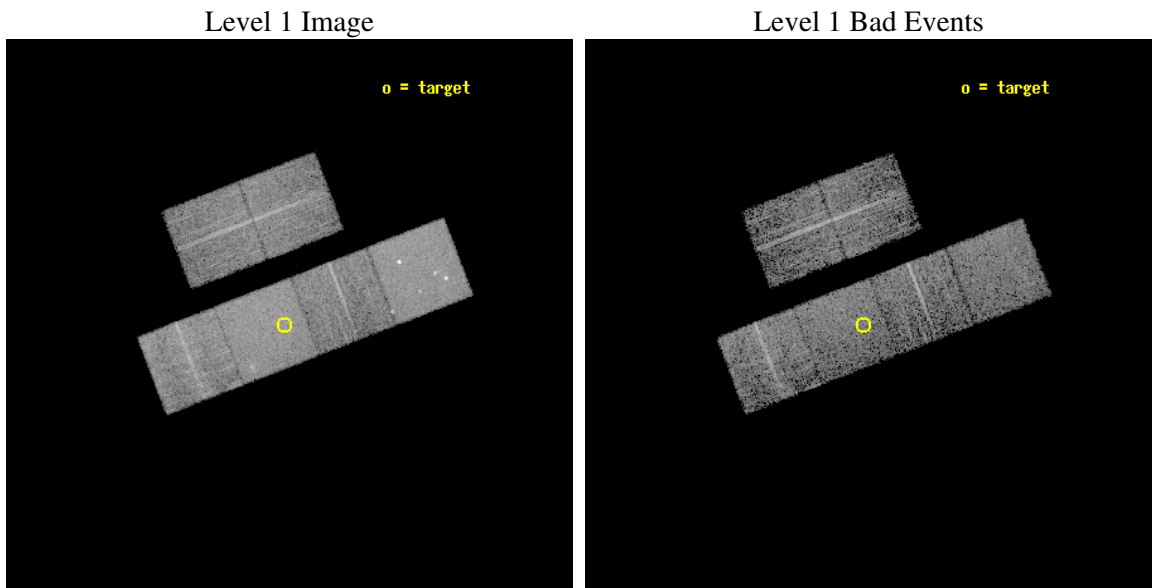
seq_num	701035
obs_id	5612
title	A Chandra Survey of the Most Distant Quasars: X-raying the First Massive Black Holes
observer	Prof. William Brandt
object	SDSS J1626+2751
dtcycle	0
cycle	P
ra_targ	246.61
dec_targ	27.859
ra_nom	246.60064073507
dec_nom	27.863982794657
roll_nom	158.89301737544
revision	2
ontime	4879.9999818206
livetime	4818.2064836676
ontime2	4879.9999818206
ontime3	4879.9999818206
ontime5	4879.9999818206
ontime6	4879.9999818206
ontime7	4879.9999818206
ontime8	4879.9999818206
l2events	107772



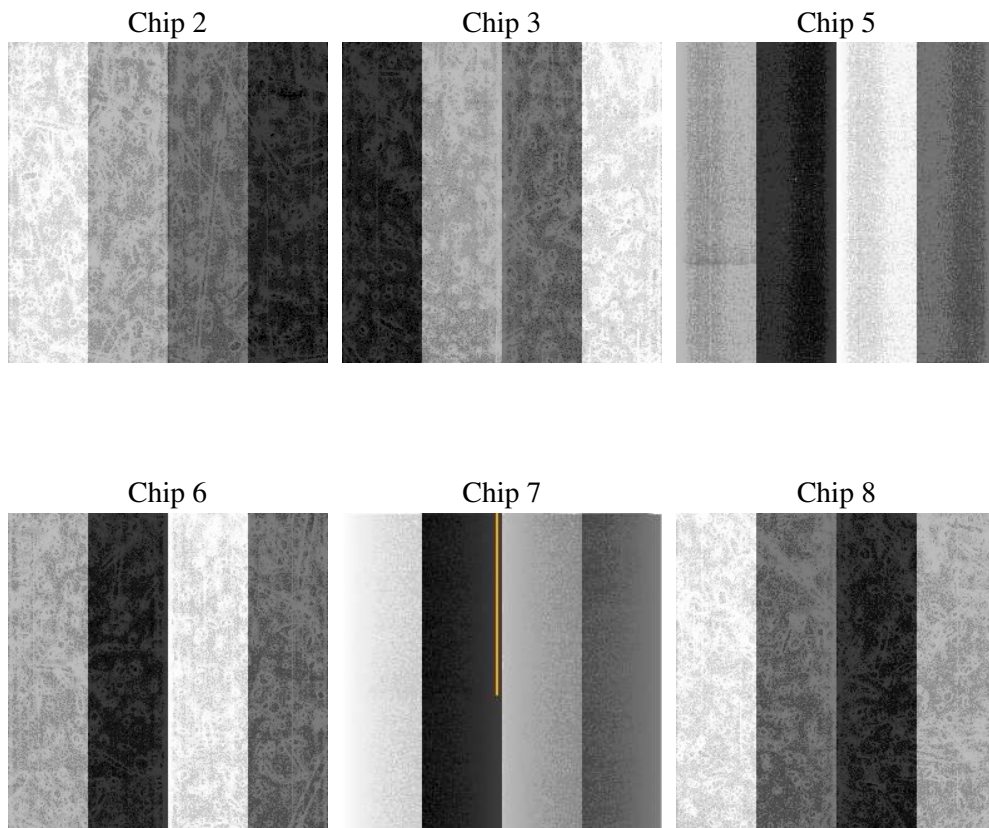
2 OBI

2.1 OBI

2.1.1 Images



2.1.2 Bias



2.1.3 Parameters

obi_num	1
ascdsver	7.6.7
caldsver	3.2.1
date	2006-03-03T10:00:03
revision	2

sched_exp_time	4800.000000
ontime	4884.2060324848
ontime2	4884.2060324848
ontime3	4884.2060125768
ontime5	4884.2060324848
ontime6	4884.2060125768
ontime7	4884.2060324848
ontime8	4884.2060125768
l1events	308591

2.1.4 Events

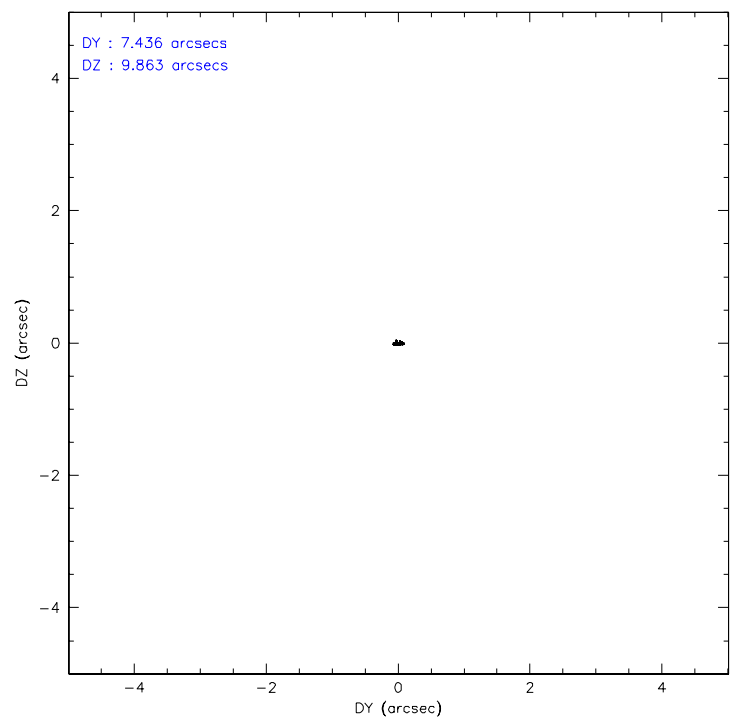
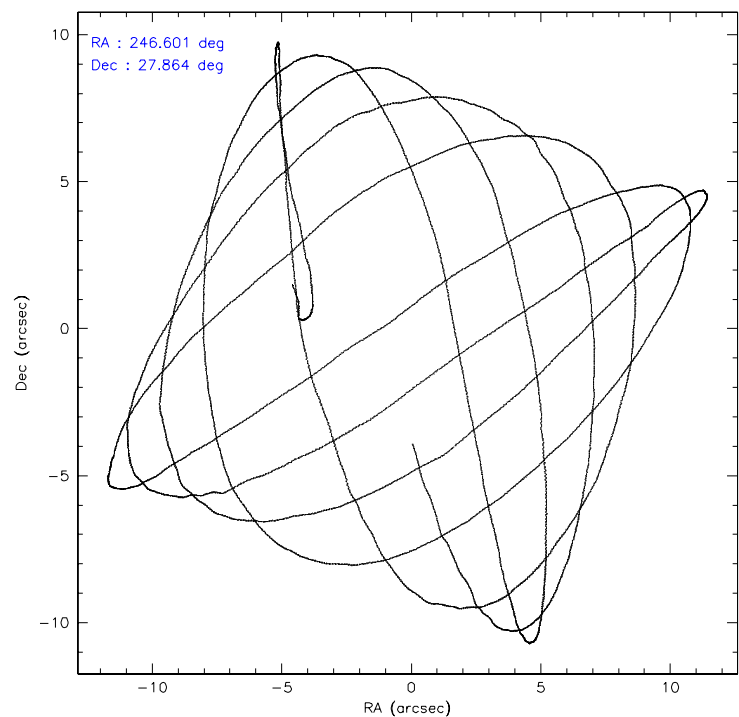
	ccd 2	ccd 3	ccd 5	ccd 6	ccd 7	ccd 8
level 1 events	43153	41793	66177	43190	61034	53244
rejected events	30976	29686	31236	30295	31062	34583
rejected %	71%	71%	47%	70%	50%	64%

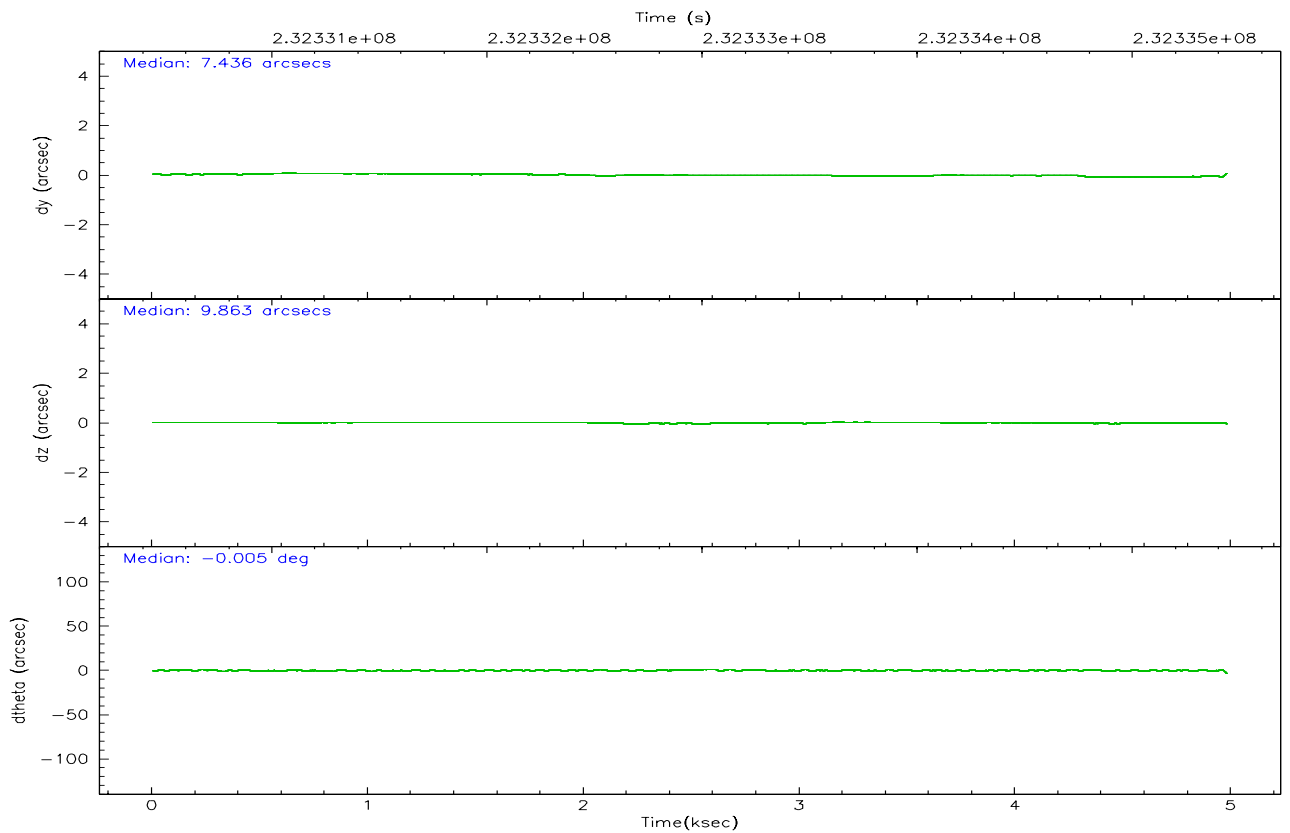
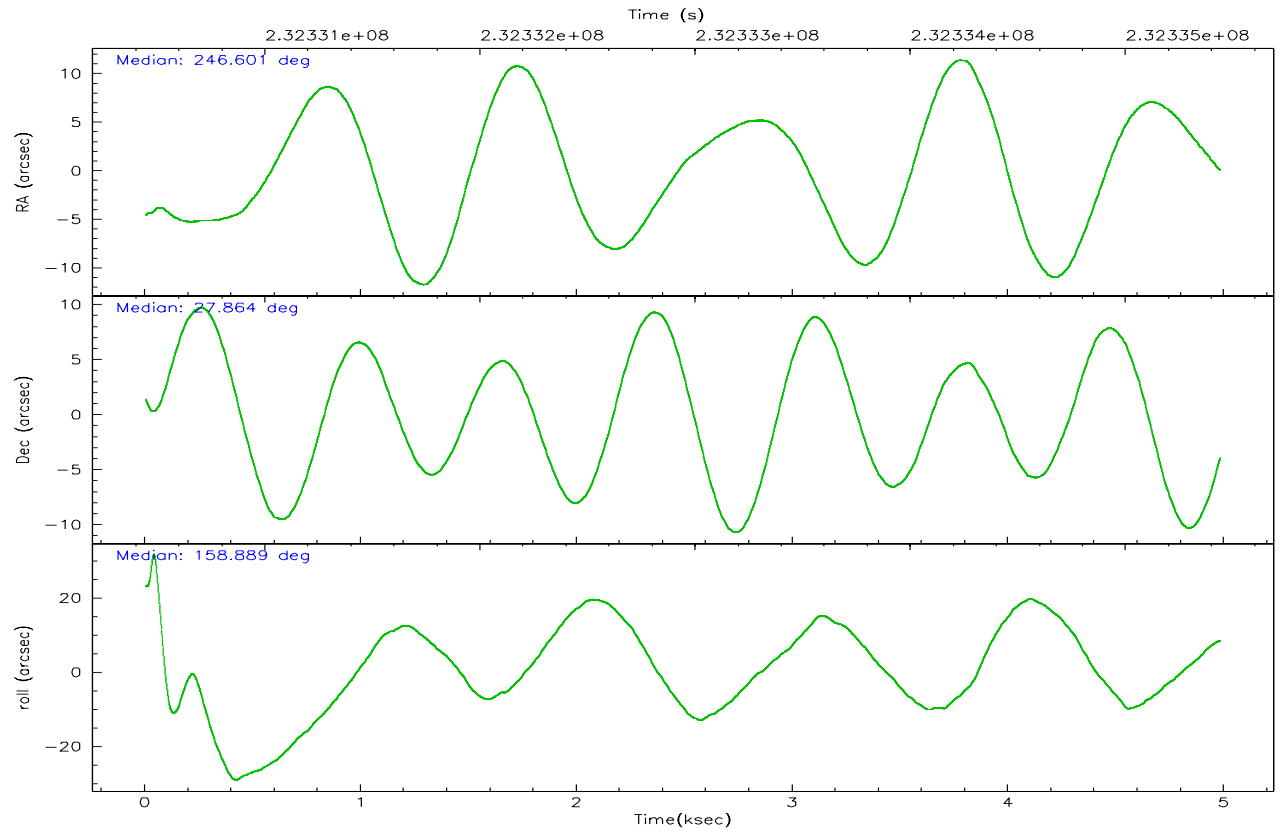
	ccd 2	ccd 3	ccd 5	ccd 6	ccd 7	ccd 8
grade 0 events	8181	8070	4348	8265	2037	9888
	18%	19%	6%	19%	3%	18%
grade 1 events	56	54	106	45	31	55
	0%	0%	0%	0%	0%	0%
grade 2 events	1592	1588	10592	1897	6731	3098
	3%	3%	16%	4%	11%	5%
grade 3 events	627	679	785	721	1477	1382
	1%	1%	1%	1%	2%	2%
grade 4 events	648	695	742	694	1473	1304
	1%	1%	1%	1%	2%	2%
grade 5 events	1449	1581	2686	1605	3153	2158
	3%	3%	4%	3%	5%	4%
grade 6 events	1142	1085	18500	1328	18275	3003
	2%	2%	27%	3%	29%	5%
grade 7 events	29458	28041	28418	28635	27857	32356
	68%	67%	42%	66%	45%	60%

2.2 Compared Parameters

Parameter	Planned	Actual	Parameter	Planned	Actual
Instrument	ACIS	ACIS	Obspar format version number	6	6
Detector	ACIS-235678	ACIS-235678	Obspar file type	PREDICTED	ACTUAL
Grating	NONE	NONE	Obspar update status	NONE	UPDATED
Data mode	FAINT	FAINT	On-chip summing requested	N	N
Observation mode	POINTING	POINTING	Subarray requested	NONE	NONE
Pointing RA	246.631007	246.6006407350678	Alternating exposures requested	N	N
Pointing Dec	27.868584	27.86398279465746	Primary exposure time	0.000000	3.2
Pointing Roll	158.722101	158.8930173754352			
SIM focus pos (mm)	-0.684267	-0.6828225247311905			
SIM defocus (mm)	0	0.001444936568705701			
SIM translation stage pos (mm)	-190.132523	-190.1400660498719			
SIM translation stage offset (mm)	0	0.00754346686406393			
Observation start time	232330634.184000	232329467.7288			
Observation start date	2005-05-13T00:16:10	2005-05-12T23:57:47			
Observation end time	232335434.184000	232336288.07911			
Observation end date	2005-05-13T01:36:10	2005-05-13T01:51:28			
Read mode	TIMED	TIMED			

2.3 Aspect



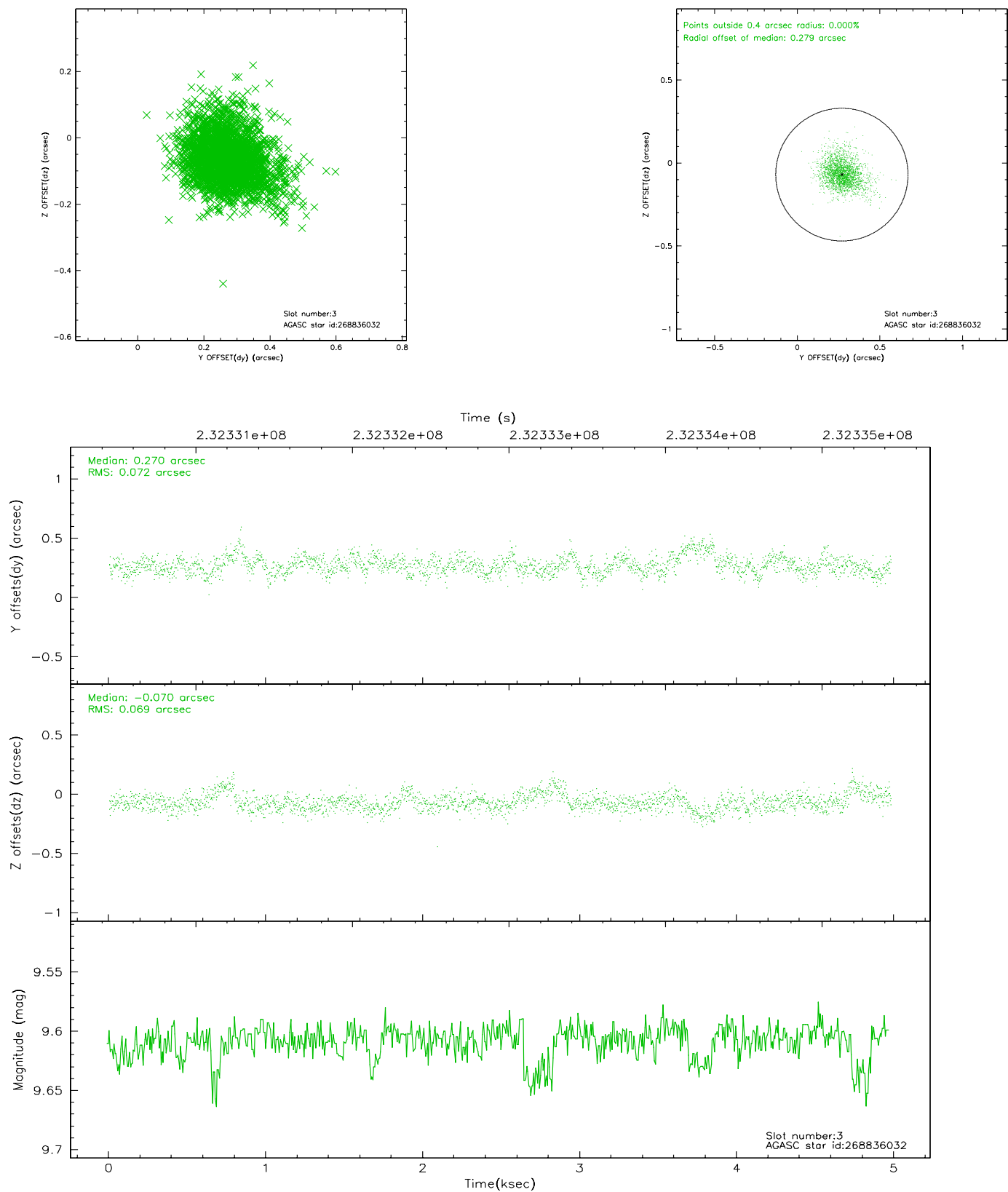


Slot Statistics

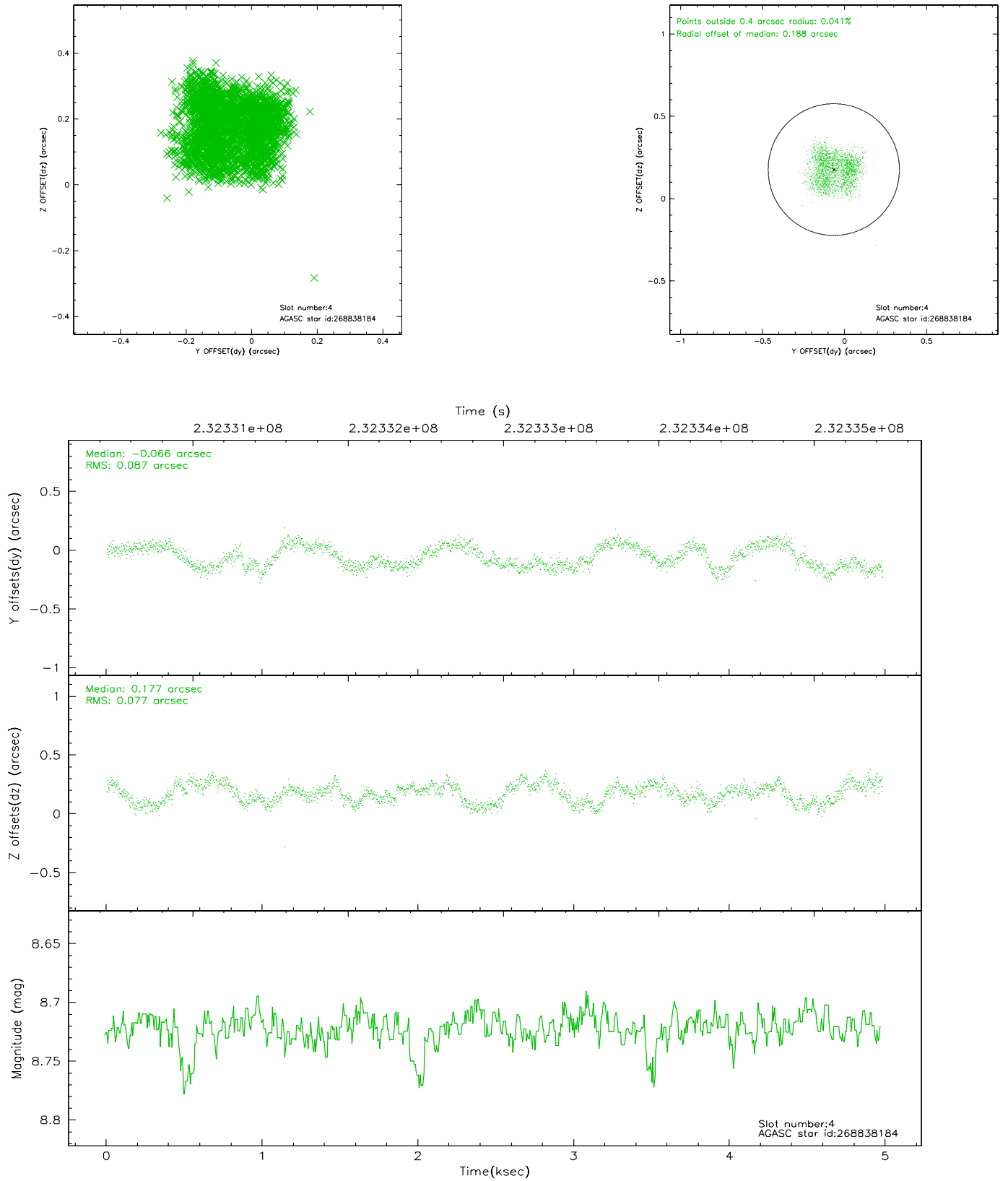
slot	status	id	mag	n_pts	med_dy	med_dz	dr1	dr2	ra	dec	mean_y	mean_z
0	FID	ACIS-S-2	7.10	1215	-0.041	-0.014	0.006	0.011	0.000000	0.000000	-760.20	-1731.14
1	FID	ACIS-S-4	7.21	1215	0.076	0.023	0.004	0.009	0.000000	0.000000	2152.59	176.19
2	FID	ACIS-S-5	7.24	1215	-0.067	-0.000	0.006	0.010	0.000000	0.000000	-1811.54	171.13
3	GUIDE	268836032	9.61	2428	0.270	-0.070	0.103	0.178	246.867642	27.663703	-970.21	412.84
4	GUIDE	268838184	8.72	2421	-0.066	0.177	0.127	0.179	246.495863	27.634881	95.98	940.67
5	GUIDE	268837680	8.80	2429	0.153	0.204	0.130	0.191	246.190261	27.754102	1160.02	892.07
6	GUIDE	268967256	8.97	2430	-0.116	-0.170	0.092	0.153	247.091446	27.159326	-2299.48	1841.75
7	BAD	269360480	10.82	1998	-0.321	-0.176	0.310	0.488	246.652788	28.590910	878.11	-2447.76

2.4 Star Slots

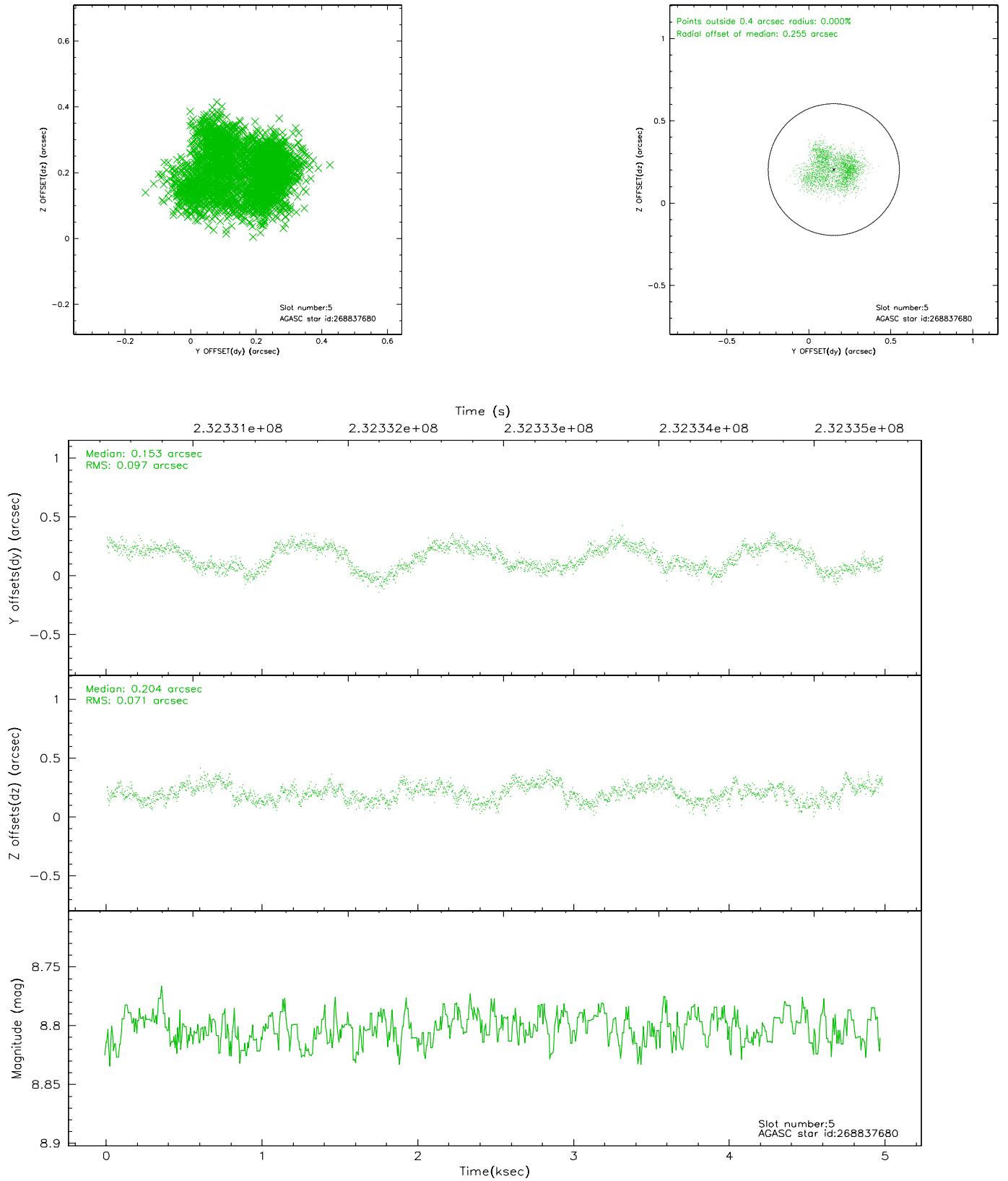
2.4.1 Slot 3



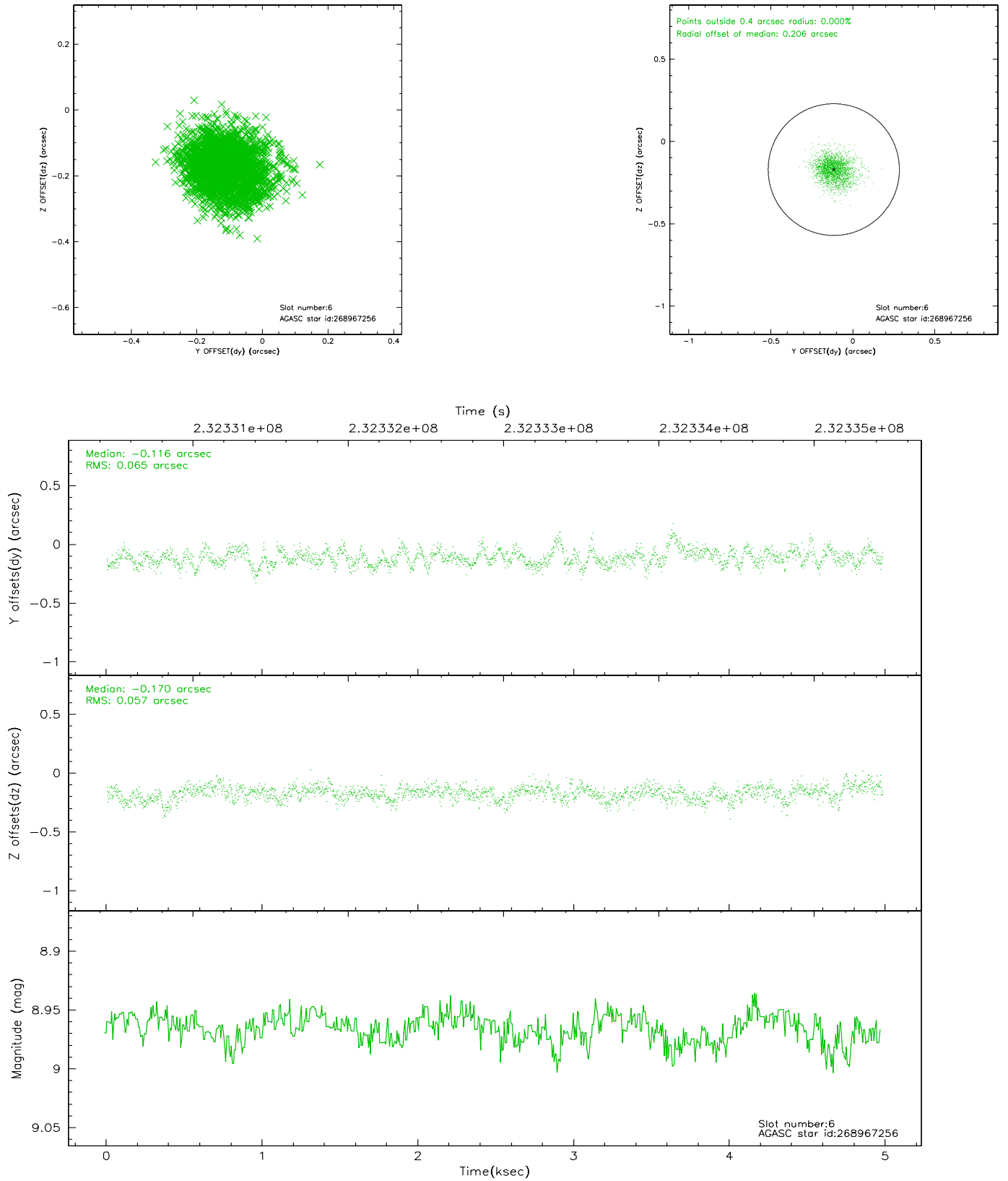
2.4.2 Slot 4



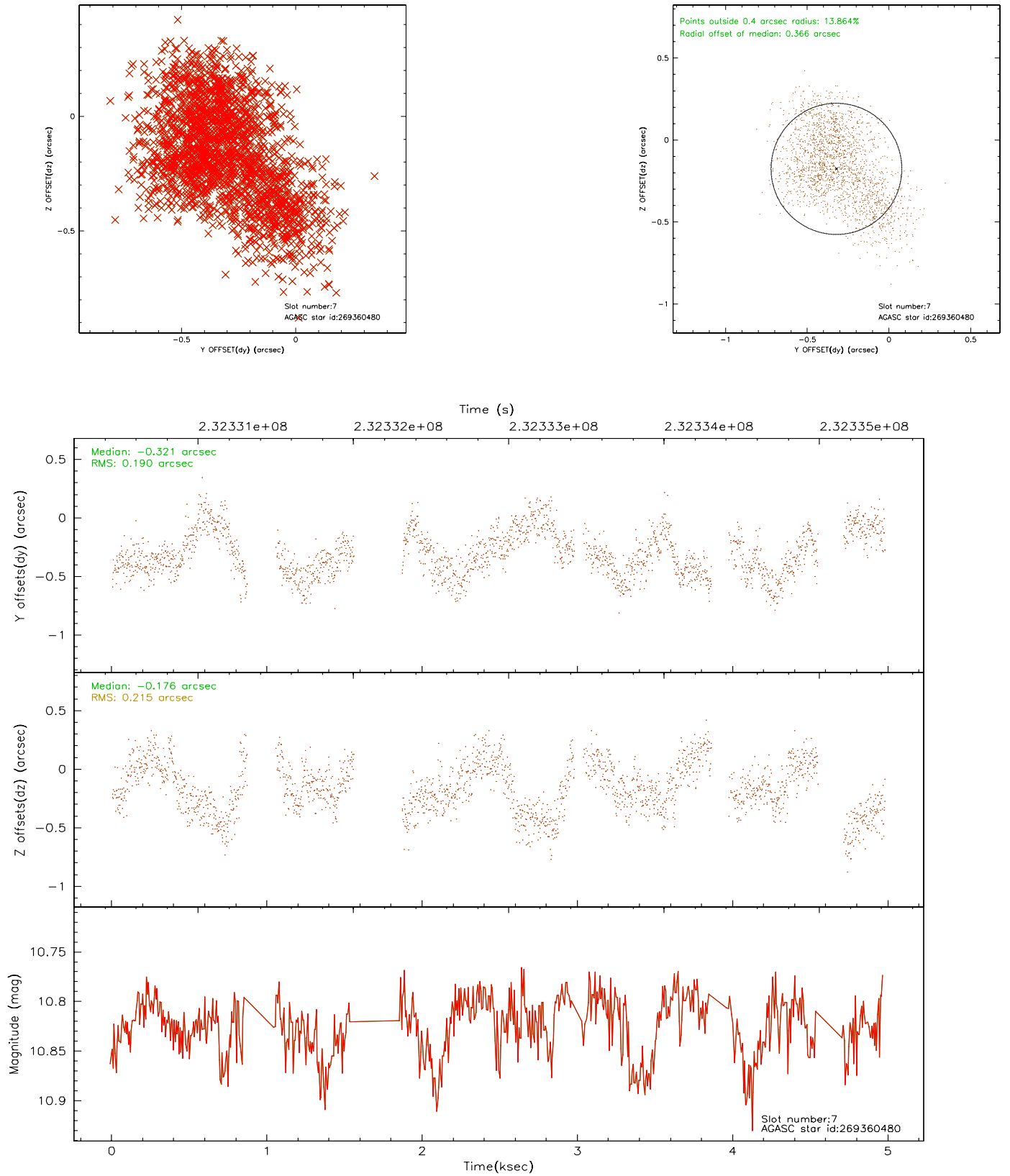
2.4.3 Slot 5



2.4.4 Slot 6

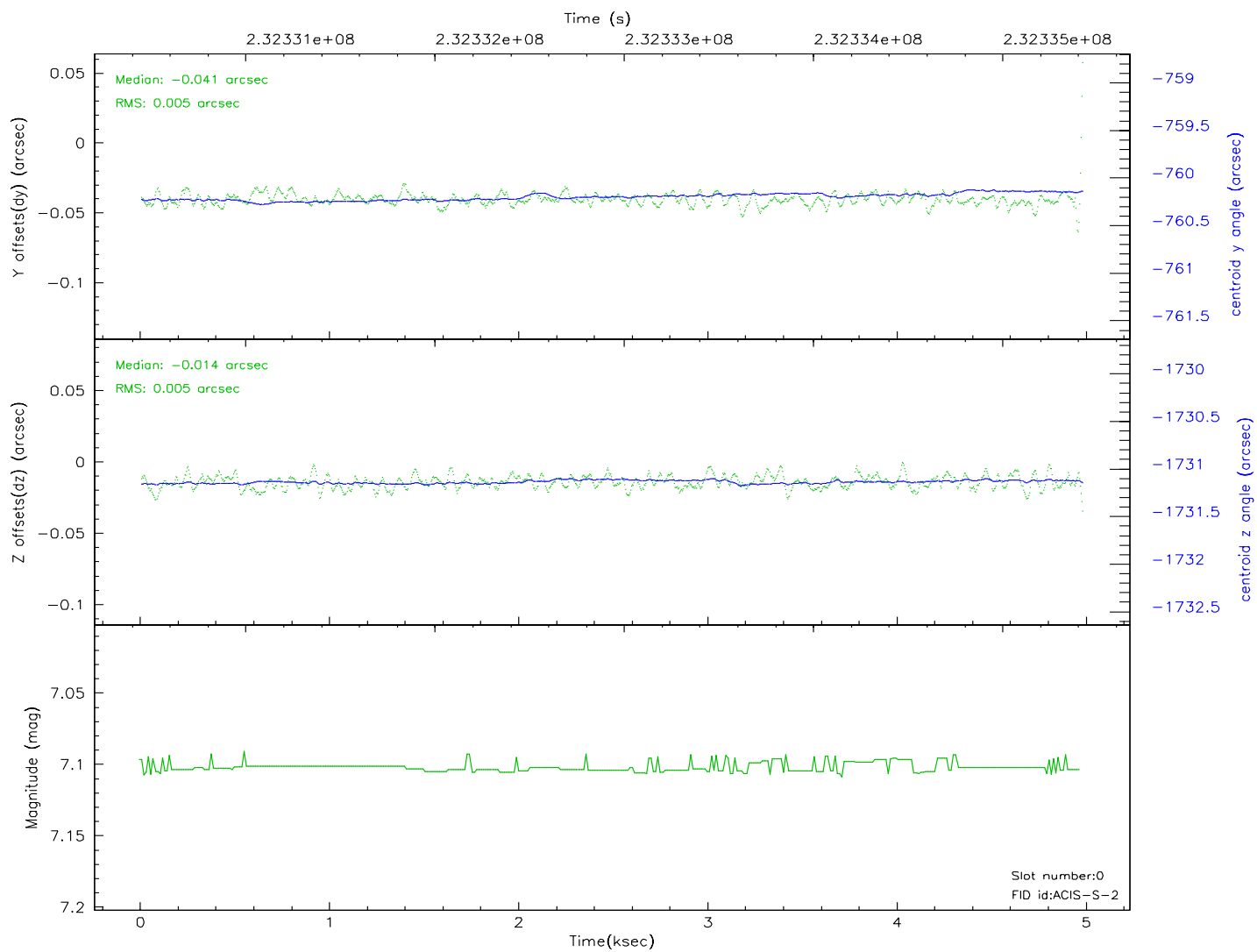
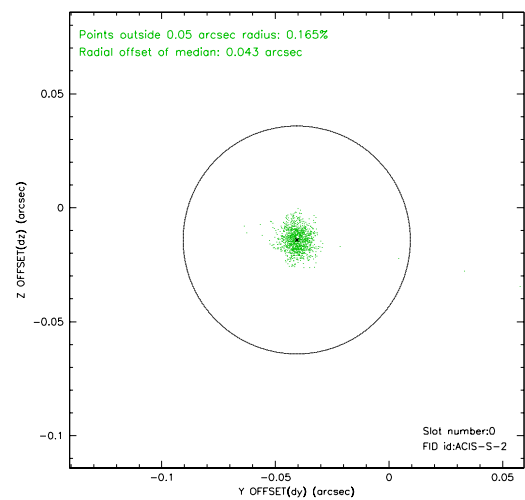
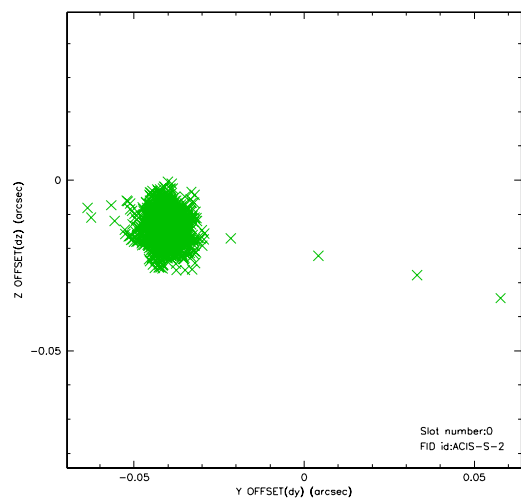


2.4.5 Slot 7

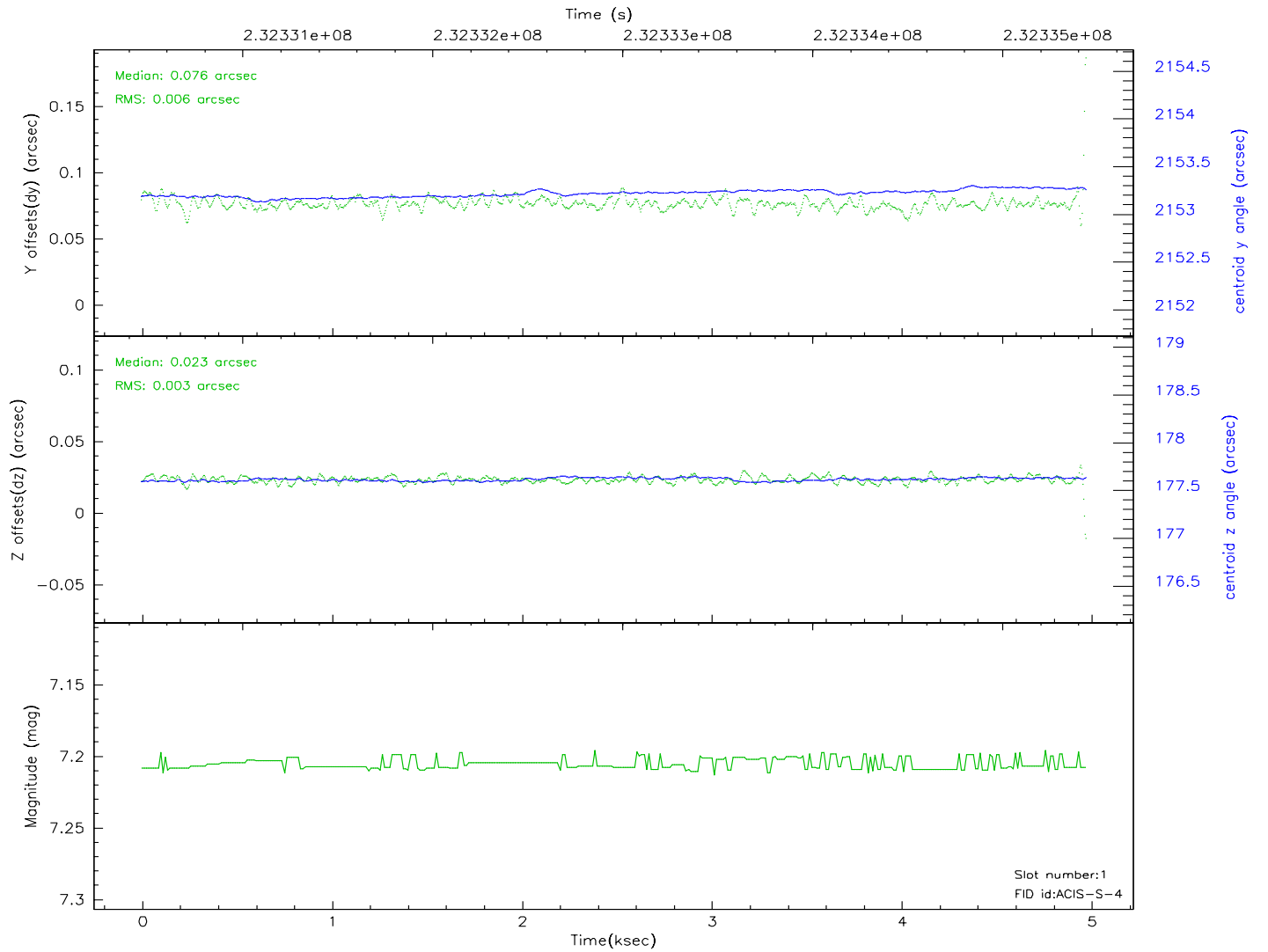
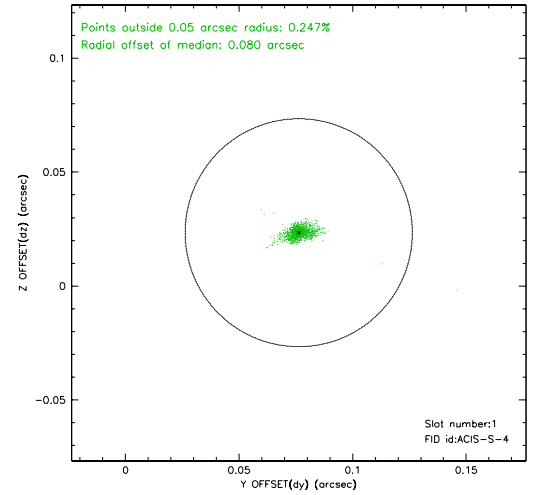
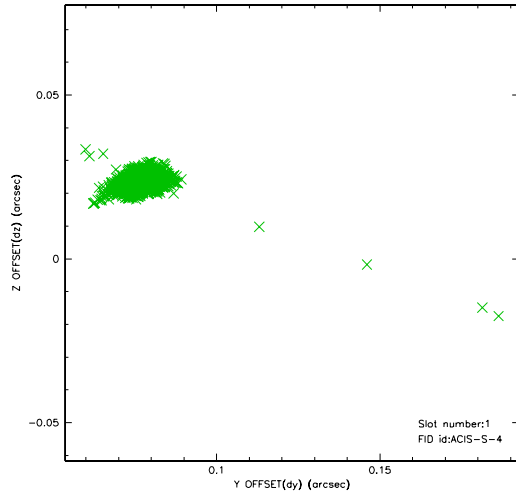


2.5 FID Slots

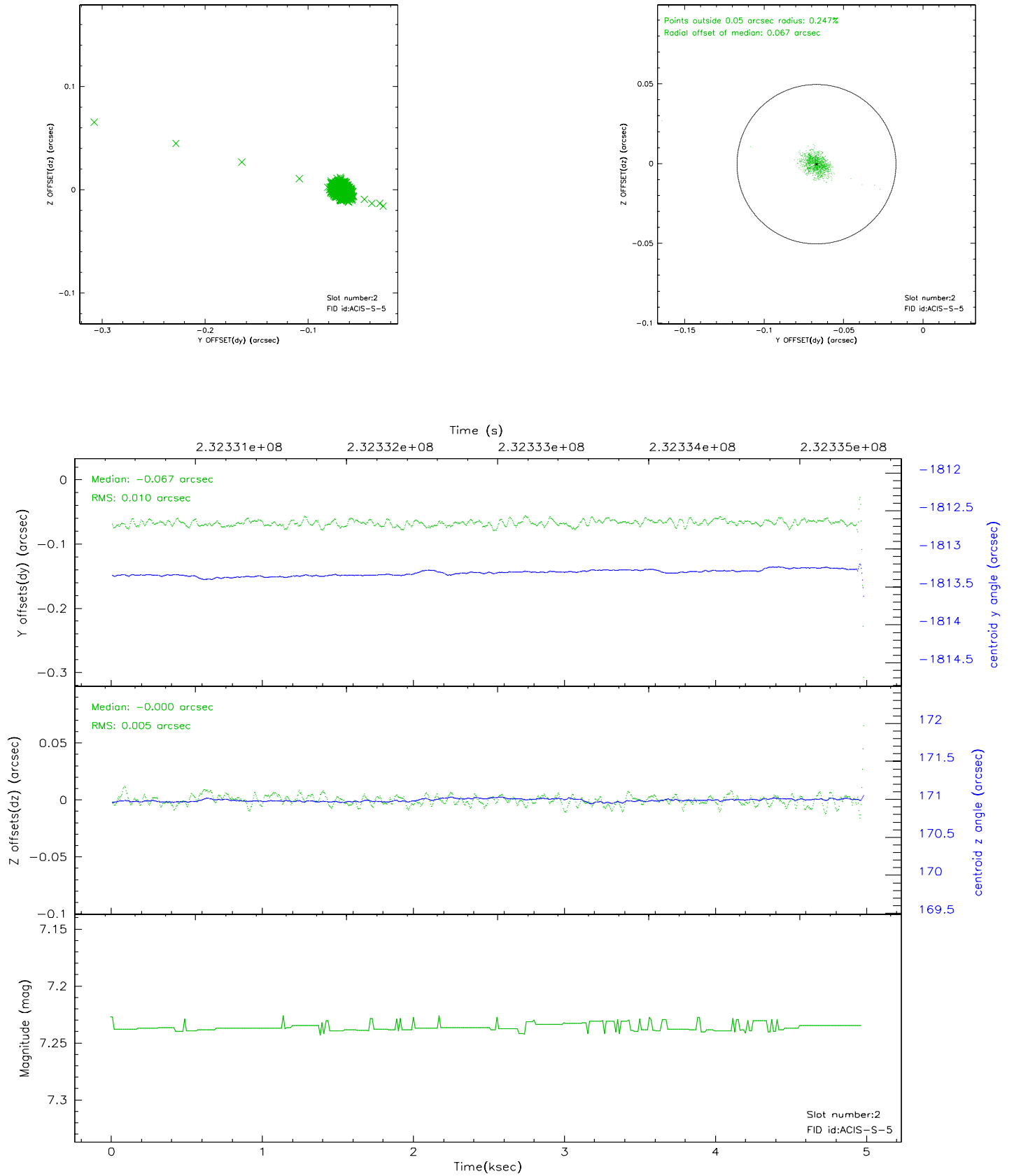
2.5.1 Slot 0



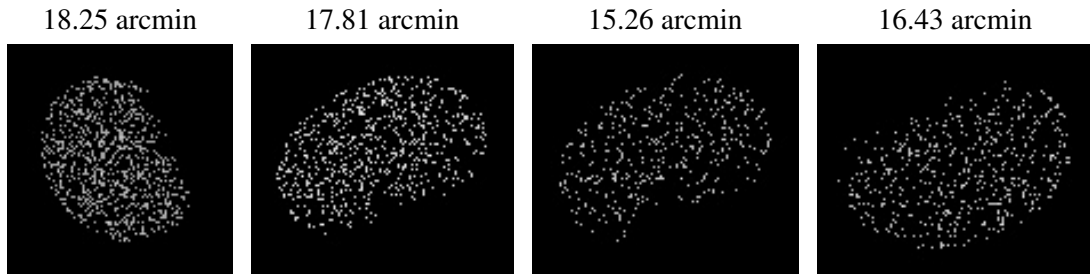
2.5.2 Slot 1



2.5.3 Slot 2



3 Point Sources



A Summary

A.1 Status

V&V Scientist	Beth Sundheim
V&V Date (YYYY-MM-DD)	2006.03.03
V&V Edition	1
V&V Disposition and Status	OK
V&V Charge Time	4.879999

A.2 Comments

Comments for Obi 1

Star in slot 7 has an RMS deviation > 0.200000 arcsec

Slot 7 was excluded from aspect solution.