

# V&V Reference Report

## L2 ASCDS Version : 8.4.5

Observation 56092 - L2 Version 2  
Chandra X-Ray Center

L2 Processing Date : Jul 1 2012

## Contents

<b>1</b>	<b>Front</b>	<b>2</b>
<b>2</b>	<b>OBI</b>	<b>3</b>
2.1	OBI . . . . .	3
2.1.1	Images . . . . .	3
2.1.2	Bias . . . . .	3
2.1.3	Parameters . . . . .	4
2.1.4	Events . . . . .	4
2.2	Compared Parameters . . . . .	5
2.3	Star Slots . . . . .	6
2.4	FID Slots . . . . .	6
<b>A</b>	<b>Summary</b>	<b>7</b>
A.1	Status . . . . .	7
A.2	Comments . . . . .	7

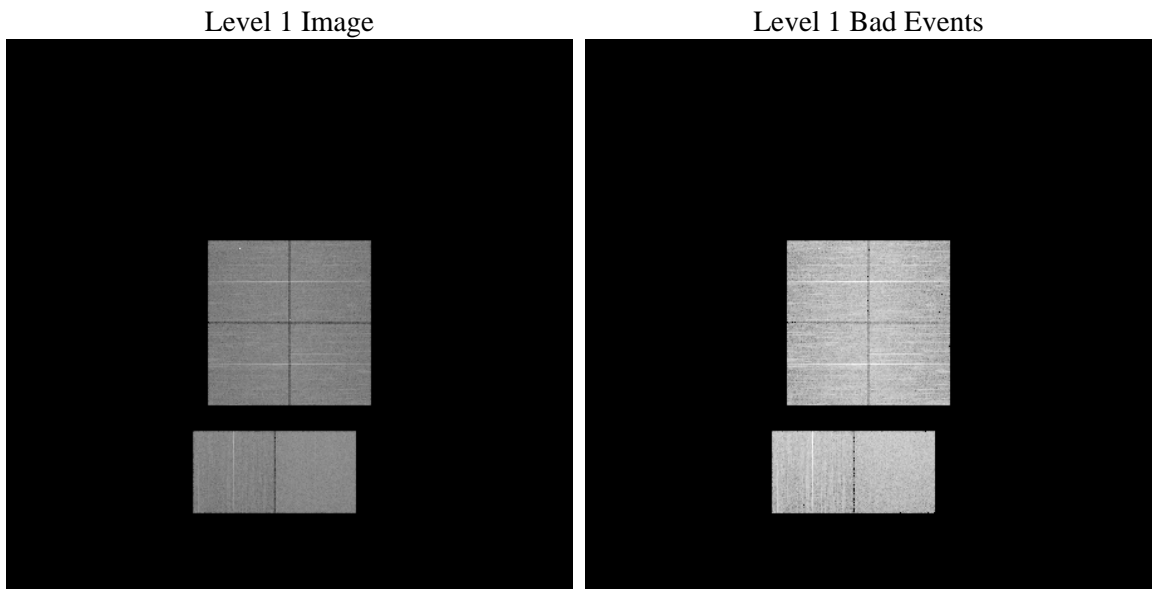
# 1 Front

seq_num	&#160	Sequence number
obs_id	56092	Observation id
title	ACIS-012367 diagnostics	Proposal title
observer	CHANDRA engineering request/realtime commanding	Principal investig
object	&#160	Source name
dtcycle	0	&#160
cycle	P	events from which exps? Prim/Second/Both
ra_targ	0.0	Observer's specified target RA [deg]
dec_targ	0.0	Observer's specified target Dec [deg]
ra_nom	312.59966888462	Nominal RA [deg]
dec_nom	-11.558103198536	Nominal Dec [deg]
roll_nom	242.29159505003	Nominal Roll [deg]
revision	2	Processing version of data
ontime	8115.1999698281	Sum of GTIs [s]
livetime	8012.4404214234	Livetime [s]
ontime0	8115.1999698281	Sum of GTIs [s]
ontime1	8111.9589294791	Sum of GTIs [s]
ontime2	8115.1999698281	Sum of GTIs [s]
ontime3	8115.1999698281	Sum of GTIs [s]
ontime6	8115.1999698281	Sum of GTIs [s]
ontime7	8115.1999698281	Sum of GTIs [s]
l2events	363268	Number of level 2 events

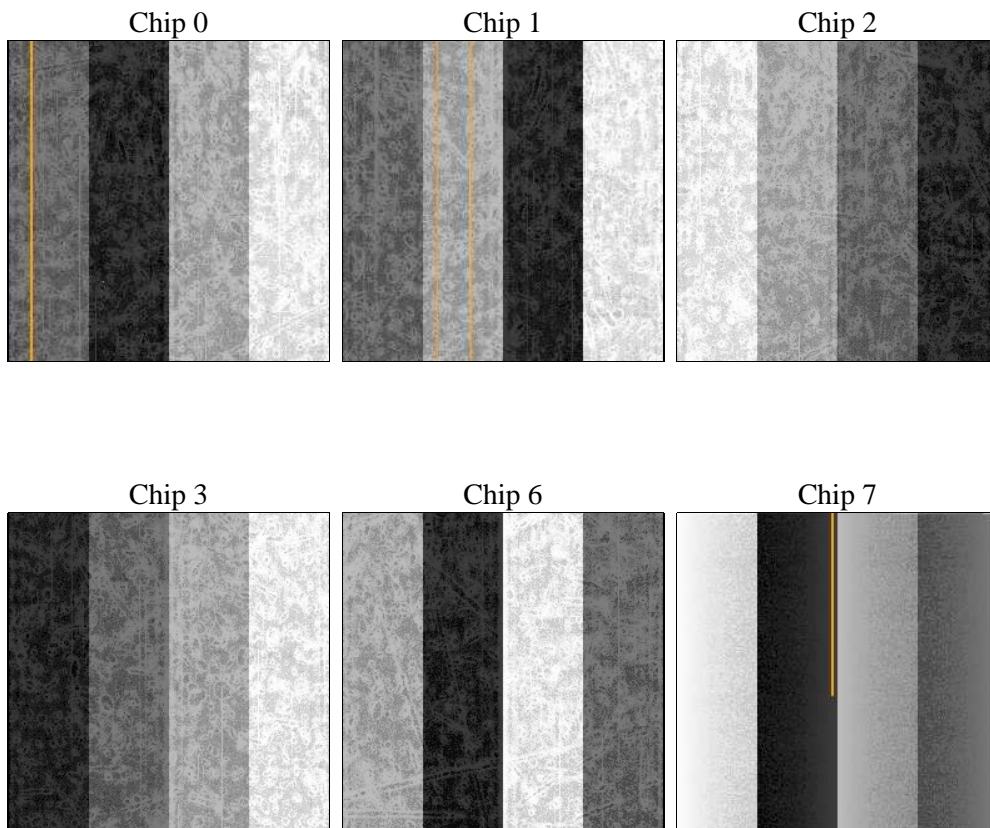
## 2 OBI

### 2.1 OBI

#### 2.1.1 Images



#### 2.1.2 Bias



### 2.1.3 Parameters

obi_num	0	Obi number	sched_exp_time	0.0	[s] Scheduled observation exposure time
ascdsver	8.4.5	Processing system revision	ontime	8115.1999698281	Sum of GTIs [s]
caldsver	4.5.0	&#160	ontime0	8115.1999698281	Sum of GTIs [s]
date	2012-07-01T04:11:56	Date and time of file creation	ontime1	8111.9589294791	Sum of GTIs [s]
revision	2	Processing version of data	ontime2	8115.1999698281	Sum of GTIs [s]
			ontime3	8115.1999698281	Sum of GTIs [s]
			ontime6	8115.1999698281	Sum of GTIs [s]
			ontime7	8115.1999698281	Sum of GTIs [s]
			l1events	751091	Number of level 1 events

### 2.1.4 Events

	ccd 0	ccd 1	ccd 2	ccd 3	ccd 6	ccd 7		ccd 0	ccd 1	ccd 2	ccd 3	ccd 6	ccd 7
level 1 events	119722	116513	117210	120697	124373	152576	grade 0 events	31956	31086	32173	32391	32130	16391
rejected events	58613	57598	59094	62374	63562	63231		26%	26%	27%	26%	25%	10%
rejected %	48%	49%	50%	51%	51%	41%	grade 1 events	207	185	215	219	169	116
								0%	0%	0%	0%	0%	0%
							grade 2 events	13385	11636	10181	10385	11285	19942
								11%	9%	8%	8%	9%	13%
							grade 3 events	4028	3896	4203	4014	4109	8268
								3%	3%	3%	3%	3%	5%
							grade 4 events	4012	4023	4052	4000	4080	8046
								3%	3%	3%	3%	3%	5%
							grade 5 events	3619	3667	3463	3896	3975	9556
								3%	3%	2%	3%	3%	6%
							grade 6 events	9017	9488	8675	8745	10459	38401
								7%	8%	7%	7%	8%	25%
							grade 7 events	53498	52532	54248	57047	58166	51856
								44%	45%	46%	47%	46%	33%

## 2.2 Compared Parameters

Parameter	Planned	Actual
Instrument	ACIS	ACIS
Detector	ACIS-012367	ACIS-012367
Grating	NONE	NONE
Data mode	FAINT	FAINT
Observation mode	SECONDARY	SECONDARY
[deg] Pointing RA	0	312.5996688846158
[deg] Pointing Dec	0	-11.55810319853575
[deg] Pointing Roll	0.0	242.2915950500303
[mm] SIM focus pos	-1.4281808131	-1.4281808131
[mm] SIM defocus	0.1051557500557434	0.1051557500557434
[mm] SIM translation stage pos	250.4660330802	250.4660330802
[mm] SIM translation stage offset	-0.01005726120527584	-0.01005726120527584
[s] Observation start time (MET)	397300124.345416	397300124.345416
Observation start date	2010-08-04T09:08:44	2010-08-04T09:08:44
[s] Observation end time (MET)	397309670.420245	397309670.420245
Observation end date	2010-08-04T11:47:50	2010-08-04T11:47:50
Read mode	TIMED	TIMED

Parameter	Planned	Actual
Obspar format version number	7	7
Obspar file type	PREDICTED	ACTUAL
Obspar update status	OVERRIDE	OVERRIDE
Number of optional ACIS chips dropped	0	0
On-chip summing requested	N	N
Subarray requested	NONE	NONE
Alternating exposures requested	N	N
[s] Primary exposure time	3.2	3.2

## **2.3 Star Slots**

## **2.4 FID Slots**

## **A Summary**

### **A.1 Status**

V&V Scientist	Jen Lauer
V&V Date (YYYY-MM-DD)	2012.07.10
V&V Edition	1
V&V Disposition and Status	OK
V&V Charge Time	8.1151999698281

### **A.2 Comments**