

V&V Reference Report

L2 ASCDS Version : 8.4.5

Observation 55842 - L2 Version 2
Chandra X-Ray Center

L2 Processing Date : Jul 7 2012

Contents

| | | |
|----------|-------------------------------|----------|
| 1 | Front | 2 |
| 2 | OBI | 3 |
| 2.1 | OBI | 3 |
| 2.1.1 | Images | 3 |
| 2.1.2 | Bias | 3 |
| 2.1.3 | Parameters | 4 |
| 2.1.4 | Events | 4 |
| 2.2 | Compared Parameters | 5 |
| 2.3 | Star Slots | 6 |
| 2.4 | FID Slots | 6 |
| A | Summary | 7 |
| A.1 | Status | 7 |
| A.2 | Comments | 7 |

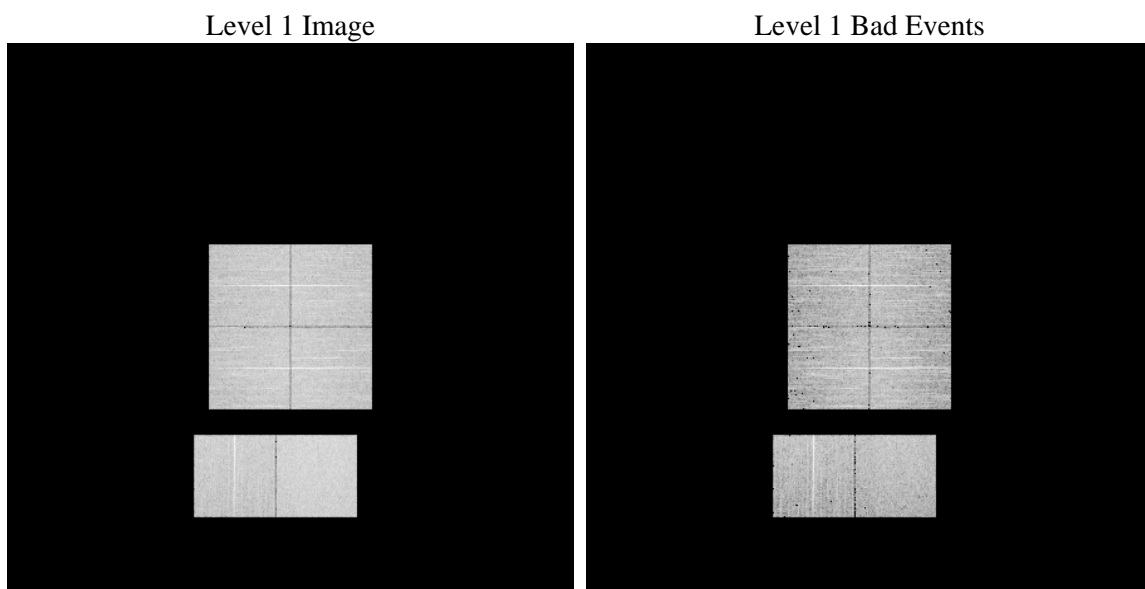
1 Front

| | | |
|----------|---|---|
| seq_num | | Sequence number |
| obs_id | 55842 | Observation id |
| title | ACIS-012367 diagnostics | Proposal title |
| observer | CHANDRA engineering request/realtime commanding | Principal investig |
| object | | Source name |
| dtcycle | 0 | |
| cycle | P | events from which exps? Prim/Second/Both |
| ra_targ | 0.0 | Observer's specified target RA [deg] |
| dec_targ | 0.0 | Observer's specified target Dec [deg] |
| ra_nom | 60.025310491195 | Nominal RA [deg] |
| dec_nom | -2.9863148299636 | Nominal Dec [deg] |
| roll_nom | 355.48216157775 | Nominal Roll [deg] |
| revision | 2 | Processing version of data |
| ontime | 6684.7999751568 | Sum of GTIs [s] |
| livetime | 6600.153012768 | Livetime [s] |
| ontime0 | 6684.7999751568 | Sum of GTIs [s] |
| ontime1 | 6684.7999751568 | Sum of GTIs [s] |
| ontime2 | 6684.7999751568 | Sum of GTIs [s] |
| ontime3 | 6684.7999751568 | Sum of GTIs [s] |
| ontime6 | 6684.7999751568 | Sum of GTIs [s] |
| ontime7 | 6684.7999751568 | Sum of GTIs [s] |
| l2events | 282776 | Number of level 2 events |

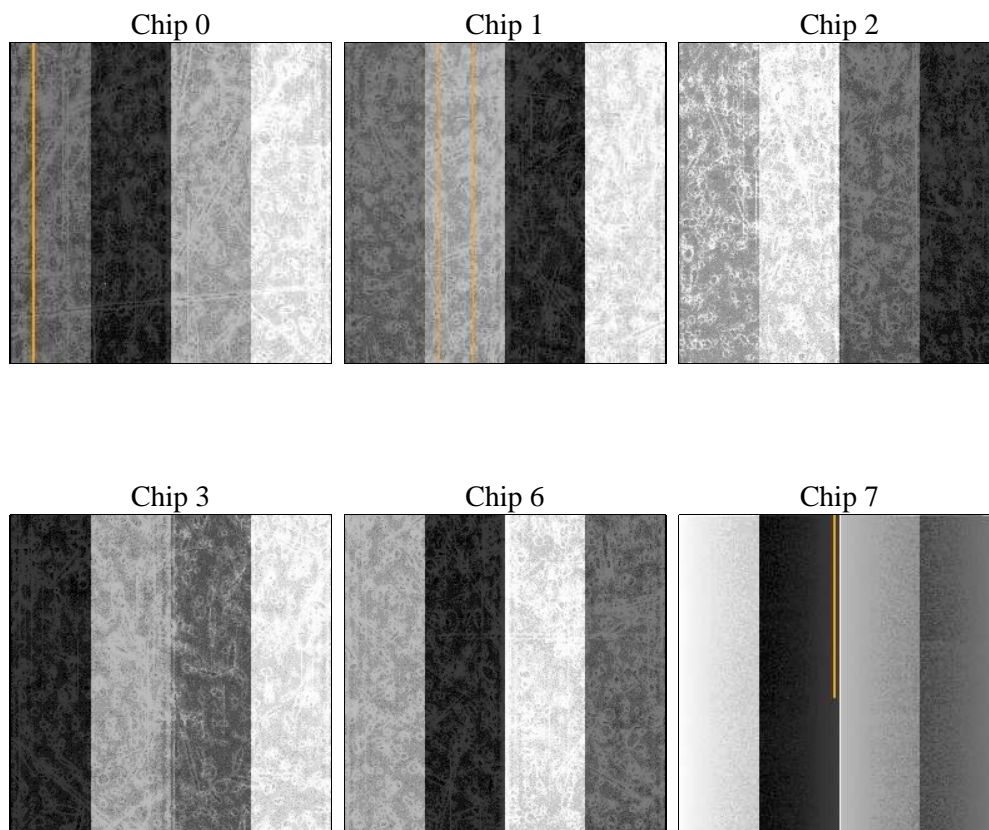
2 OBI

2.1 OBI

2.1.1 Images



2.1.2 Bias



2.1.3 Parameters

| | | | | | |
|----------|---------------------|--------------------------------|----------------|-----------------|---|
| obi_num | 0 | Obi number | sched_exp_time | 0.0 | [s] Scheduled observation exposure time |
| ascdsver | 8.4.5 | Processing system revision | ontime | 6684.7999751568 | Sum of GTIs [s] |
| caldsver | 4.5.0 | | ontime0 | 6684.7999751568 | Sum of GTIs [s] |
| date | 2012-07-07T07:42:38 | Date and time of file creation | ontime1 | 6684.7999751568 | Sum of GTIs [s] |
| revision | 2 | Processing version of data | ontime2 | 6684.7999751568 | Sum of GTIs [s] |
| | | | ontime3 | 6684.7999751568 | Sum of GTIs [s] |
| | | | ontime6 | 6684.7999751568 | Sum of GTIs [s] |
| | | | ontime7 | 6684.7999751568 | Sum of GTIs [s] |
| | | | l1events | 600122 | Number of level 1 events |

2.1.4 Events

| | ccd 0 | ccd 1 | ccd 2 | ccd 3 | ccd 6 | ccd 7 | | ccd 0 | ccd 1 | ccd 2 | ccd 3 | ccd 6 | ccd 7 |
|-----------------|-------|-------|-------|-------|-------|--------|----------------|-------|-------|-------|-------|-------|-------|
| level 1 events | 91509 | 94050 | 95409 | 98027 | 97551 | 123576 | grade 0 events | 23834 | 23405 | 24092 | 24589 | 23723 | 12351 |
| rejected events | 46207 | 48706 | 50635 | 52642 | 51094 | 51648 | | 26% | 24% | 25% | 25% | 24% | 9% |
| rejected % | 50% | 51% | 53% | 53% | 52% | 41% | grade 1 events | 156 | 133 | 176 | 156 | 136 | 104 |
| | | | | | | | | 0% | 0% | 0% | 0% | 0% | 0% |
| | | | | | | | grade 2 events | 8501 | 8528 | 7887 | 7961 | 8597 | 15572 |
| | | | | | | | | 9% | 9% | 8% | 8% | 8% | 12% |
| | | | | | | | grade 3 events | 3053 | 3135 | 2997 | 3115 | 3063 | 6612 |
| | | | | | | | | 3% | 3% | 3% | 3% | 3% | 5% |
| | | | | | | | grade 4 events | 3073 | 3029 | 3145 | 3057 | 3031 | 6481 |
| | | | | | | | | 3% | 3% | 3% | 3% | 3% | 5% |
| | | | | | | | grade 5 events | 3116 | 3034 | 2795 | 3222 | 3191 | 8105 |
| | | | | | | | | 3% | 3% | 2% | 3% | 3% | 6% |
| | | | | | | | grade 6 events | 6841 | 7247 | 6653 | 6663 | 8043 | 30912 |
| | | | | | | | | 7% | 7% | 6% | 6% | 8% | 25% |
| | | | | | | | grade 7 events | 42935 | 45539 | 47664 | 49264 | 47767 | 43439 |
| | | | | | | | | 46% | 48% | 49% | 50% | 48% | 35% |

2.2 Compared Parameters

| Parameter | Planned | Actual | Parameter | Planned | Actual |
|-----------------------------------|---------------------|----------------------|---------------------------------------|-----------|---------|
| Instrument | ACIS | ACIS | Obspar format version number | 7 | 7 |
| Detector | ACIS-012367 | ACIS-012367 | Obspar file type | PREDICTED | ACTUAL |
| Grating | NONE | NONE | Obspar update status | NONE | UPDATED |
| Data mode | FAINT | FAINT | Number of optional ACIS chips dropped | 0 | 0 |
| Observation mode | SECONDARY | SECONDARY | On-chip summing requested | N | N |
| [deg] Pointing RA | 0 | 60.02531049119526 | Subarray requested | NONE | NONE |
| [deg] Pointing Dec | 0 | -2.98631482996355 | Alternating exposures requested | N | N |
| [deg] Pointing Roll | 0.0 | 355.4821615777543 | [s] Primary exposure time | 3.2 | 3.2 |
| [mm] SIM focus pos | -1.429586 | -1.428180813131781 | | | |
| [mm] SIM defocus | 0.1037507710433287 | 0.1051558262725154 | | | |
| [mm] SIM translation stage pos | 250.455976 | 250.466033080201 | | | |
| [mm] SIM translation stage offset | 0 | -0.01005468664627074 | | | |
| [s] Observation start time (MET) | 407162369.401964 | 407162368.37697 | | | |
| Observation start date | 2010-11-26T12:39:29 | 2010-11-26T12:39:28 | | | |
| [s] Observation end time (MET) | 407169702.252342 | 407169701.22734 | | | |
| Observation end date | 2010-11-26T14:41:42 | 2010-11-26T14:41:41 | | | |
| Read mode | TIMED | TIMED | | | |

2.3 Star Slots

2.4 FID Slots

A Summary

A.1 Status

| | |
|----------------------------|-----------------|
| V&V Scientist | Beth Sundheim |
| V&V Date (YYYY-MM-DD) | 2012.07.17 |
| V&V Edition | 1 |
| V&V Disposition and Status | OK |
| V&V Charge Time | 6.6847999751568 |

A.2 Comments