

V&V Reference Report

L2 ASCDS Version : 7.6.7.1

Observation 5582 - L2 Version 002
Chandra X-Ray Center

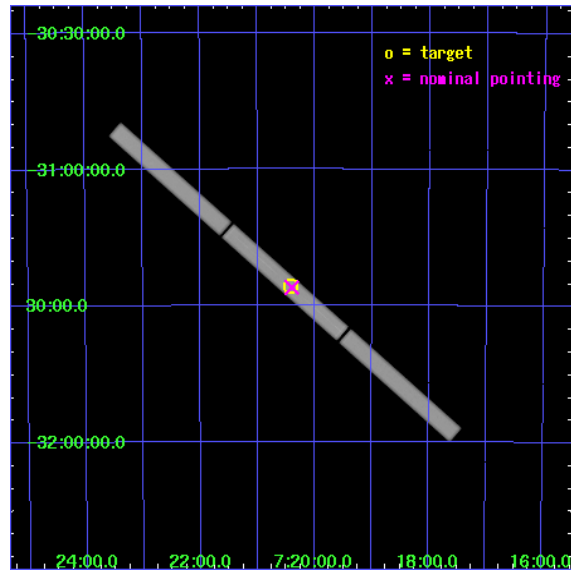
L2 Processing Date : Mar 8 2006

Contents

1	Front	2
2	OBI	3
2.1	OBI	3
2.1.1	Images	3
2.1.2	Parameters	4
2.1.3	Events	4
2.2	Compared Parameters	5
2.3	Aspect	6
2.4	Star Slots	9
2.4.1	Slot 3	9
2.4.2	Slot 4	10
2.4.3	Slot 5	11
2.4.4	Slot 6	12
2.4.5	Slot 7	13
2.5	FID Slots	14
2.5.1	Slot 0	14
2.5.2	Slot 1	15
2.5.3	Slot 2	16
3	Gratings	17
3.1	LETG Arm	17
A	Summary	19
A.1	Status	19
A.2	Comments	19

1 Front

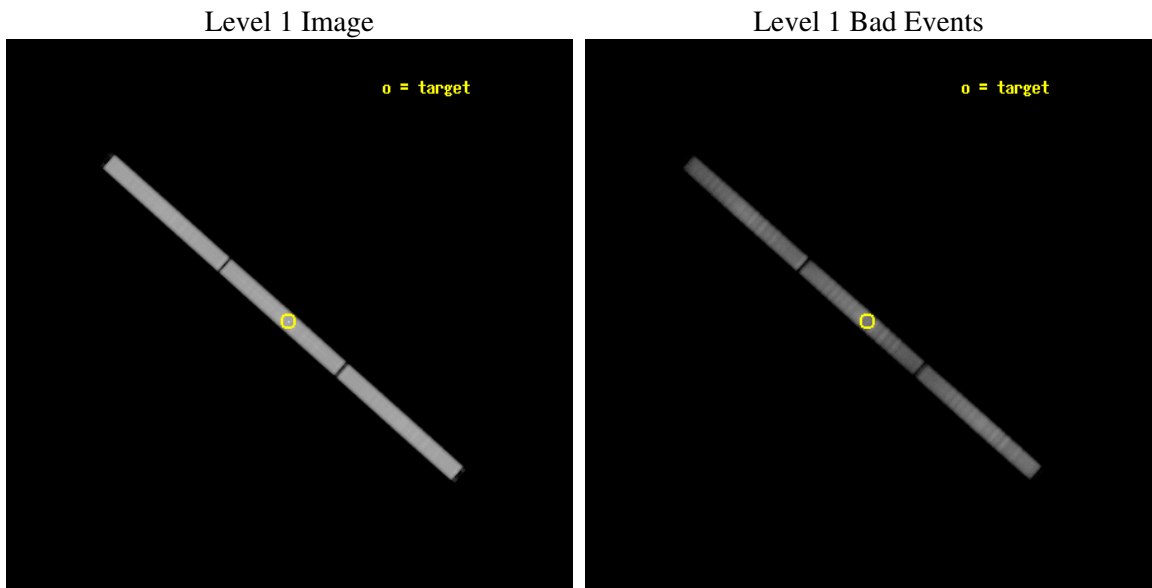
seq_num	500571
obs_id	5582
title	Spectra of Neutron Stars with Strongly Magnetized Hydrogen Atmospheres
observer	Prof. Marten van Kerkwijk
object	RX J0720.4-3125
ra_targ	110.104167
dec_targ	-31.430611
ra_nom	110.09994990286
dec_nom	-31.433602145282
roll_nom	221.385941124
revision	2
ontime	70172.784451276
livetime	69689.018097341
l2events	3869003



2 OBI

2.1 OBI

2.1.1 Images



2.1.2 Parameters

obi_num	0
ascdsver	7.6.7.1
caldsver	3.2.1
date	2006-03-08T17:21:05
revision	2

sched_exp_time	70000.000000
ontime	70173.809451312
l1events	5685908

2.1.3 Events

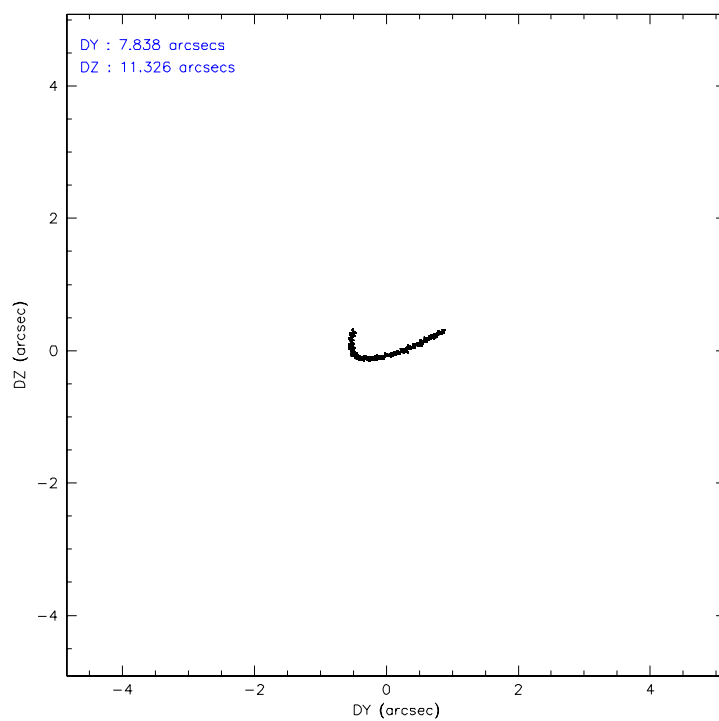
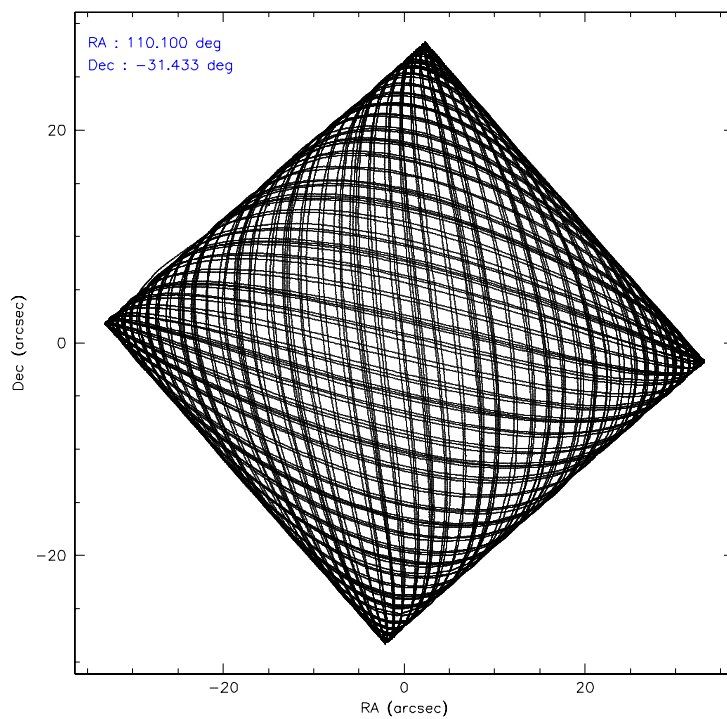
Level 1 Events

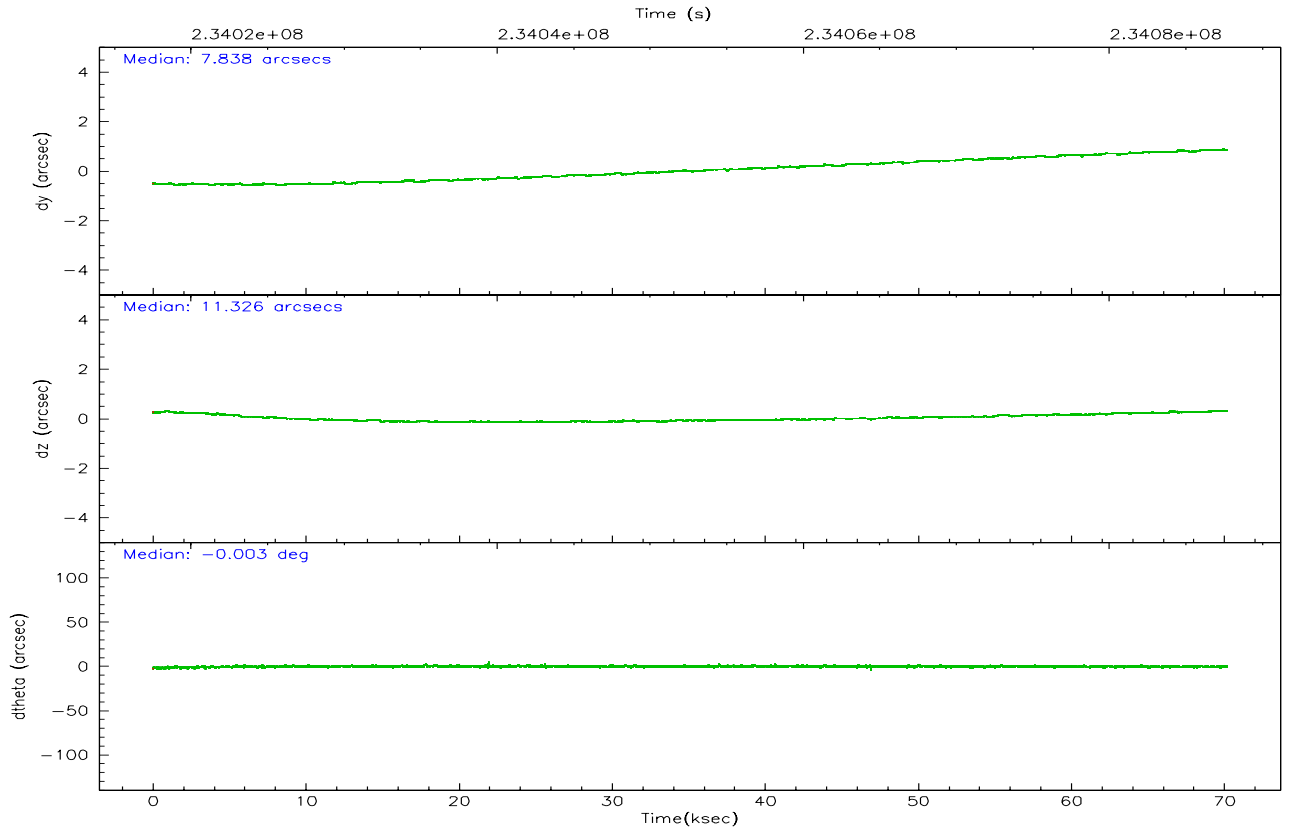
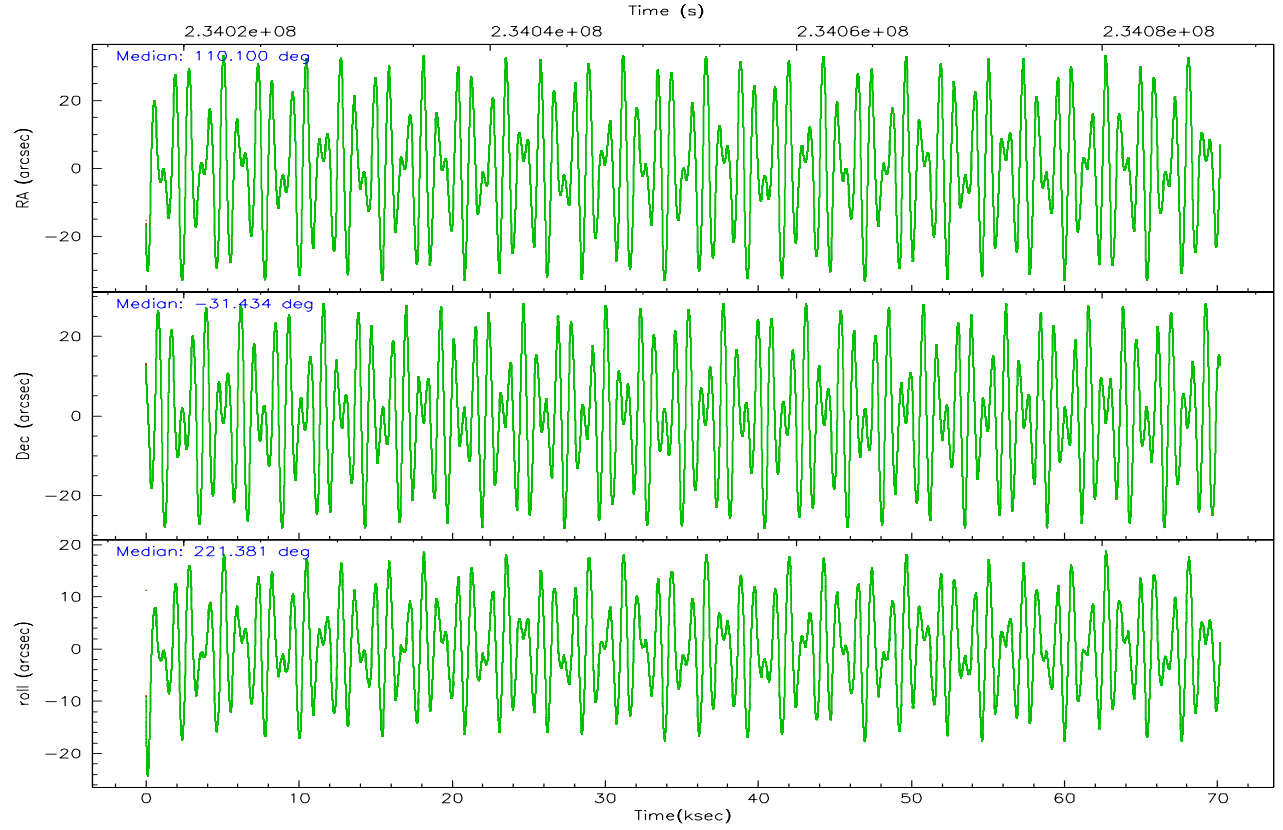
	segment 1	segment 2	segment 3
level 1 events	1907851	1876972	1901085
rejected events	390422	429717	473776
rejected %	20%	22%	24%

2.2 Compared Parameters

Parameter	Planned	Actual	Parameter	Planned	Actual
Instrument	HRC	HRC	Obspar format version number	6	6
Detector	HRC-S	HRC-S	Obspar file type	PREDICTED	ACTUAL
Grating	LETG	LETG	Obspar update status	NONE	UPDATED
Data mode	OBSERVING	OBSERVING			
Observation mode	POINTING	POINTING			
Pointing RA	110.109061	110.0999499028625			
Pointing Dec	-31.406081	-31.43360214528164			
Pointing Roll	221.323352	221.3859411239957			
SIM focus pos (mm)	-1.429586	-1.428180813131781			
SIM defocus (mm)	0.1037507710433287	0.1051558262725154			
SIM translation stage pos (mm)	250.455976	250.466033080201			
SIM translation stage offset (mm)	0	-0.01005468664627074			
Observation start time	234017693.184000	234016298.51818			
Observation start date	2005-06-01T12:53:49	2005-06-01T12:31:38			
Observation end time	234087693.184000	234088558.45898			
Observation end date	2005-06-02T08:20:29	2005-06-02T08:35:58			

2.3 Aspect



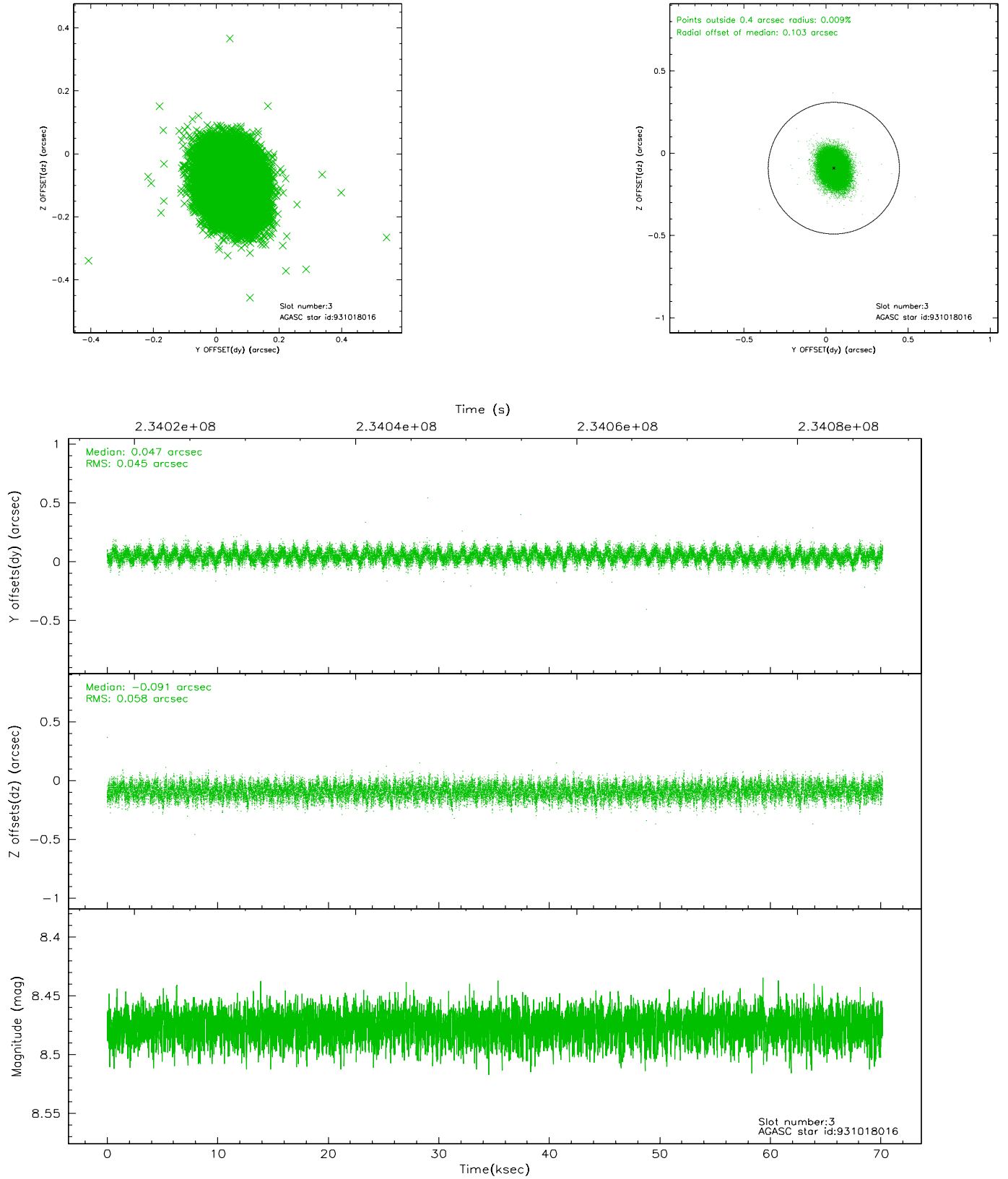


Slot Statistics

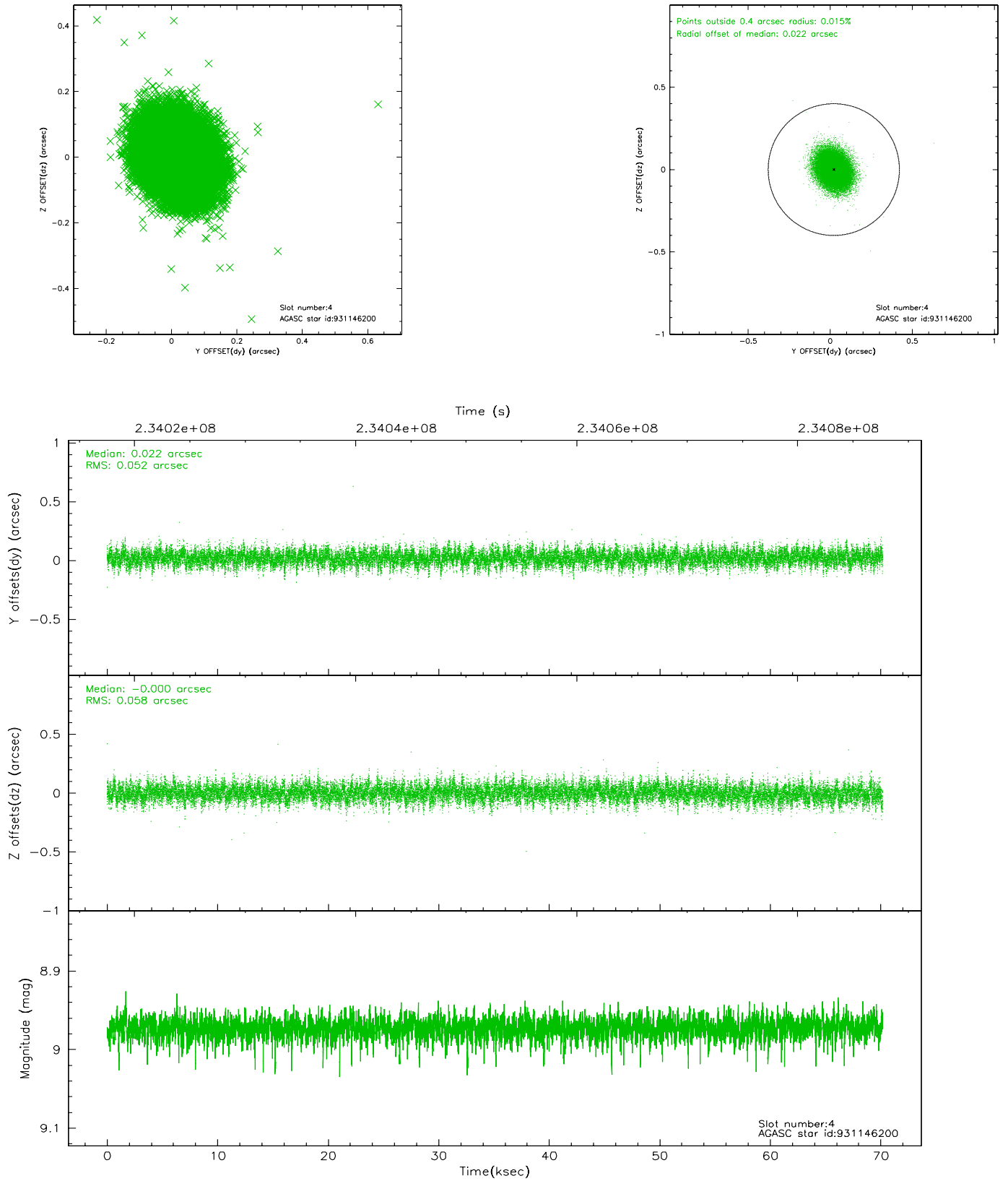
slot	status	id	mag	n_pts	med_dy	med_dz	dr1	dr2	ra	dec	mean_y	mean_z
0	FID	HRC-S-1	7.01	17115	0.136	-0.148	0.016	0.025	0.000000	0.000000	-1162.05	-460.07
1	FID	HRC-S-2	7.01	17116	0.154	-0.112	0.014	0.039	0.000000	0.000000	1237.58	-452.71
2	FID	HRC-S-3	7.02	17113	0.103	-0.042	0.014	0.026	0.000000	0.000000	-1164.72	569.54
3	GUIDE	931018016	8.48	34220	0.047	-0.091	0.078	0.127	109.684535	-31.226562	556.74	-1346.07
4	GUIDE	931146200	8.97	34208	0.022	-0.000	0.082	0.136	110.586199	-31.643611	-531.45	1610.43
5	GUIDE	931160352	8.63	34220	-0.071	-0.056	0.078	0.126	110.268138	-30.864891	-1655.30	-1138.25
6	GUIDE	931019296	8.68	34216	0.078	0.043	0.073	0.118	109.471771	-31.694370	2155.59	-504.64
7	GUIDE	931163512	8.45	34227	-0.077	0.107	0.082	0.131	110.894384	-31.299941	-2060.81	1314.93

2.4 Star Slots

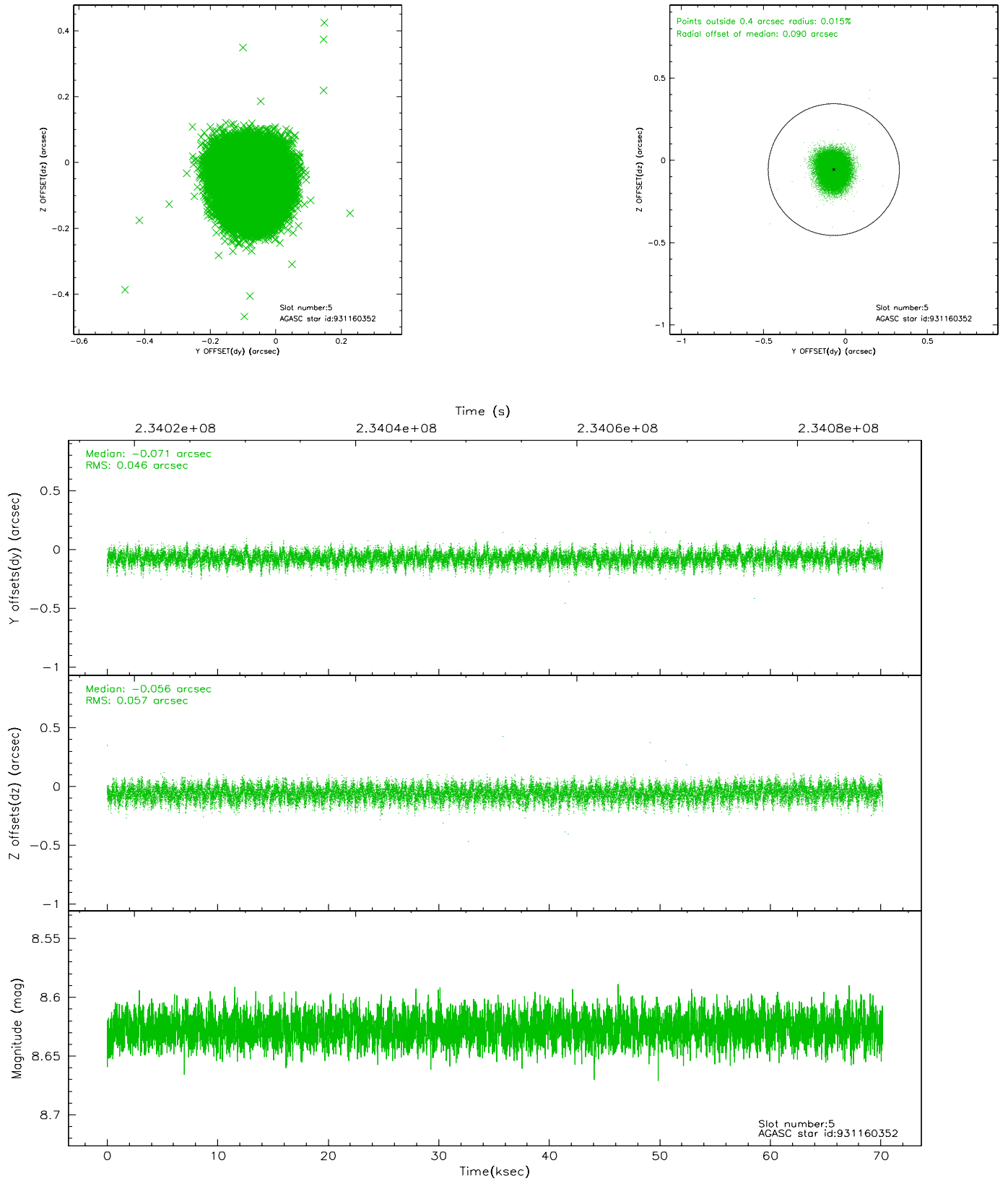
2.4.1 Slot 3



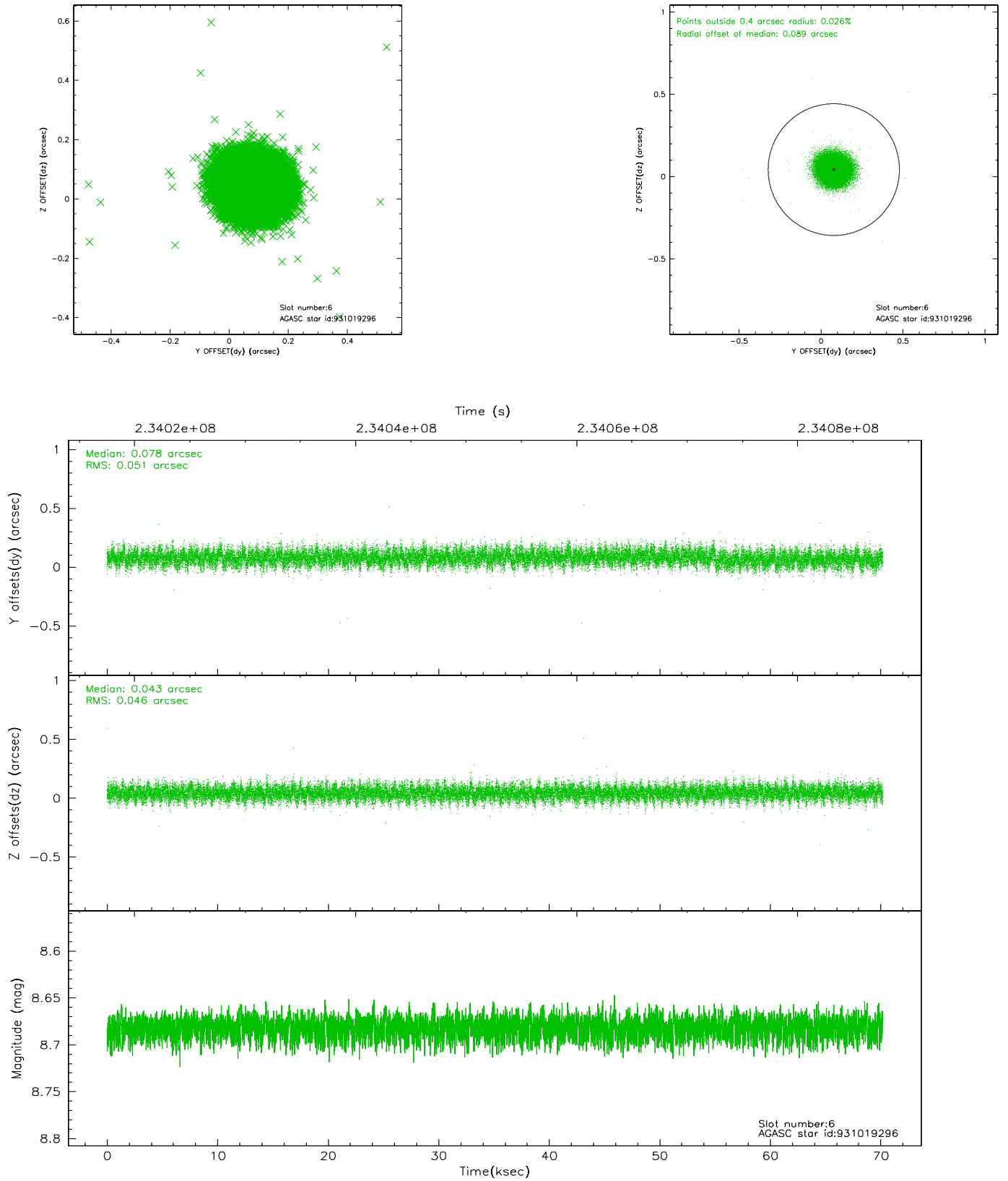
2.4.2 Slot 4



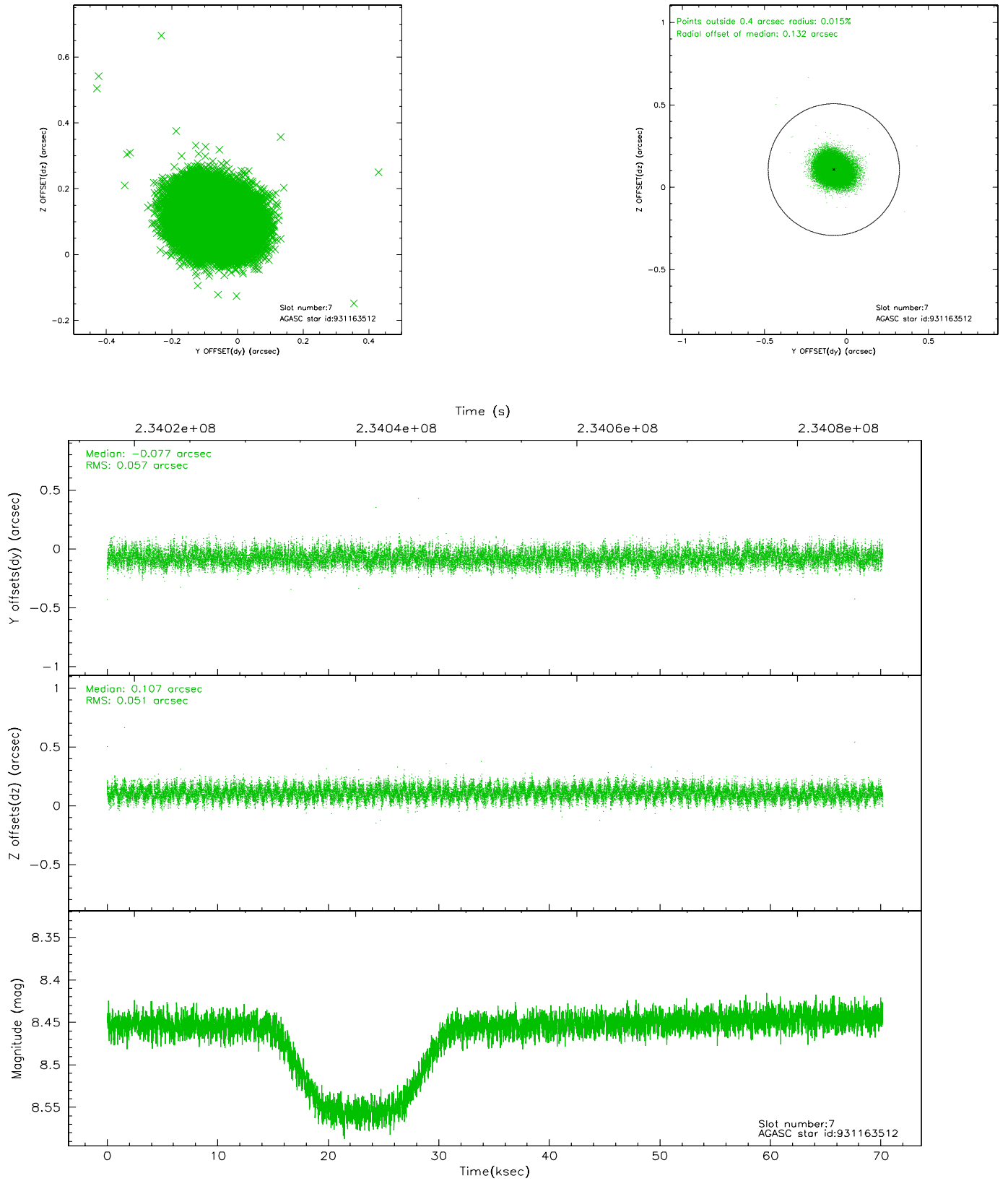
2.4.3 Slot 5



2.4.4 Slot 6

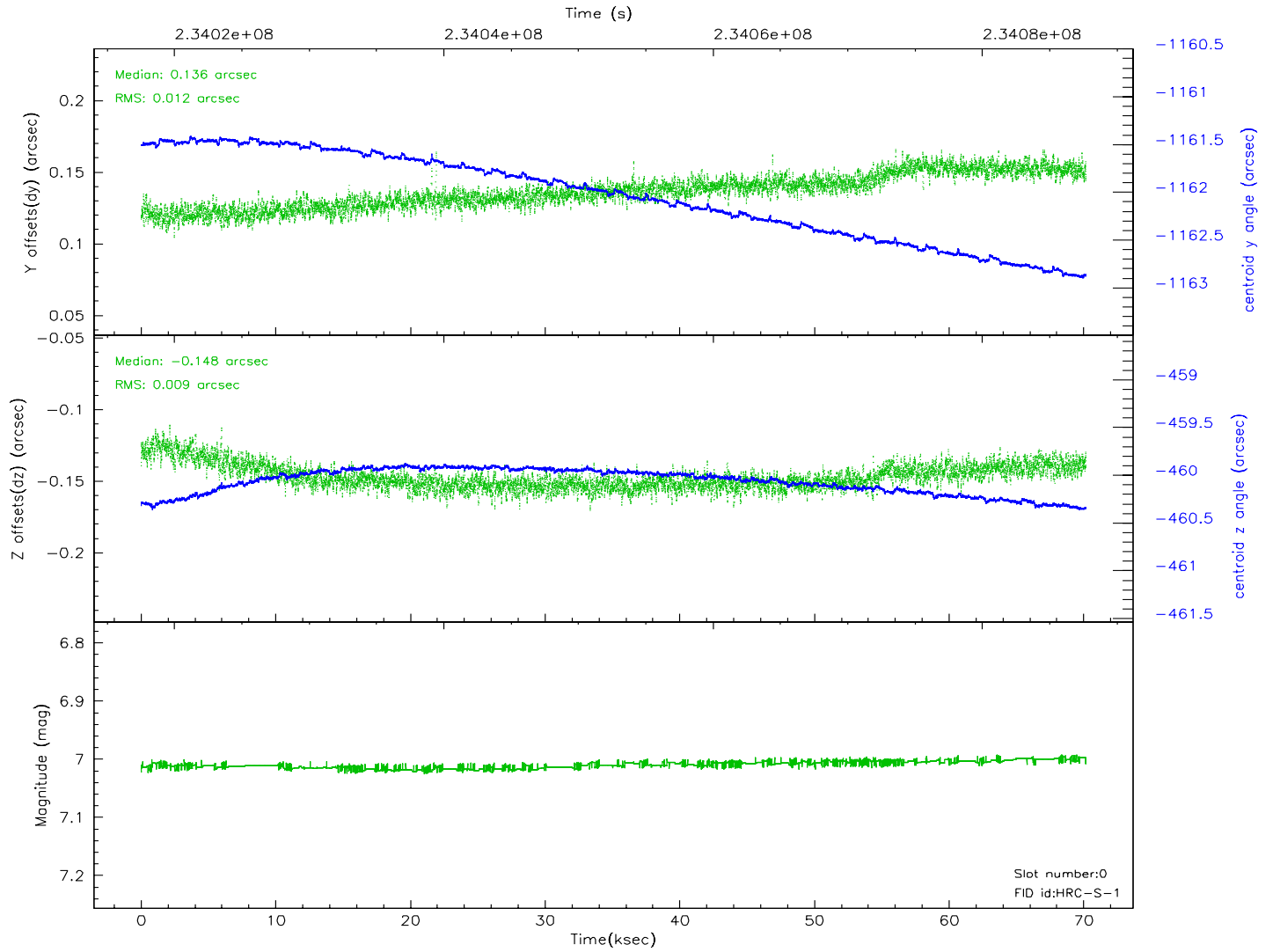
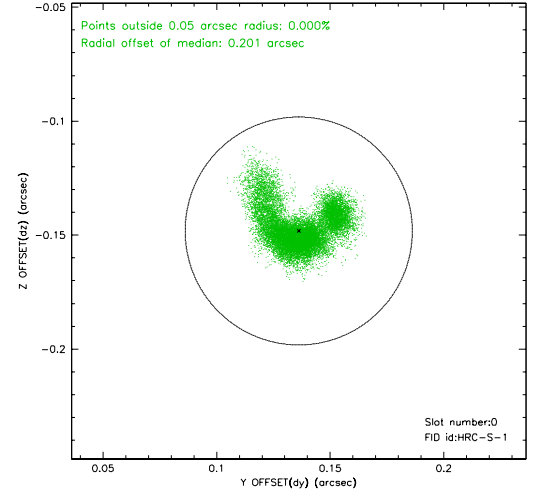
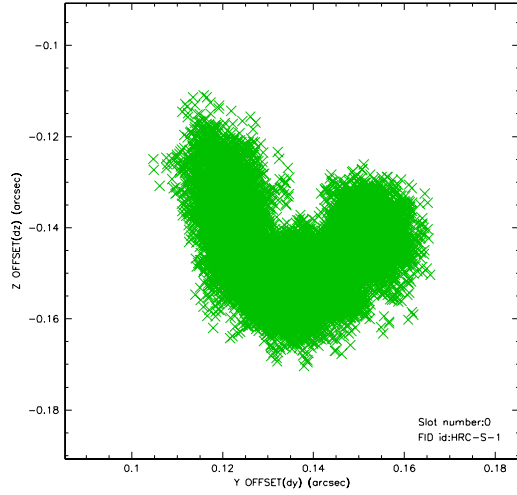


2.4.5 Slot 7

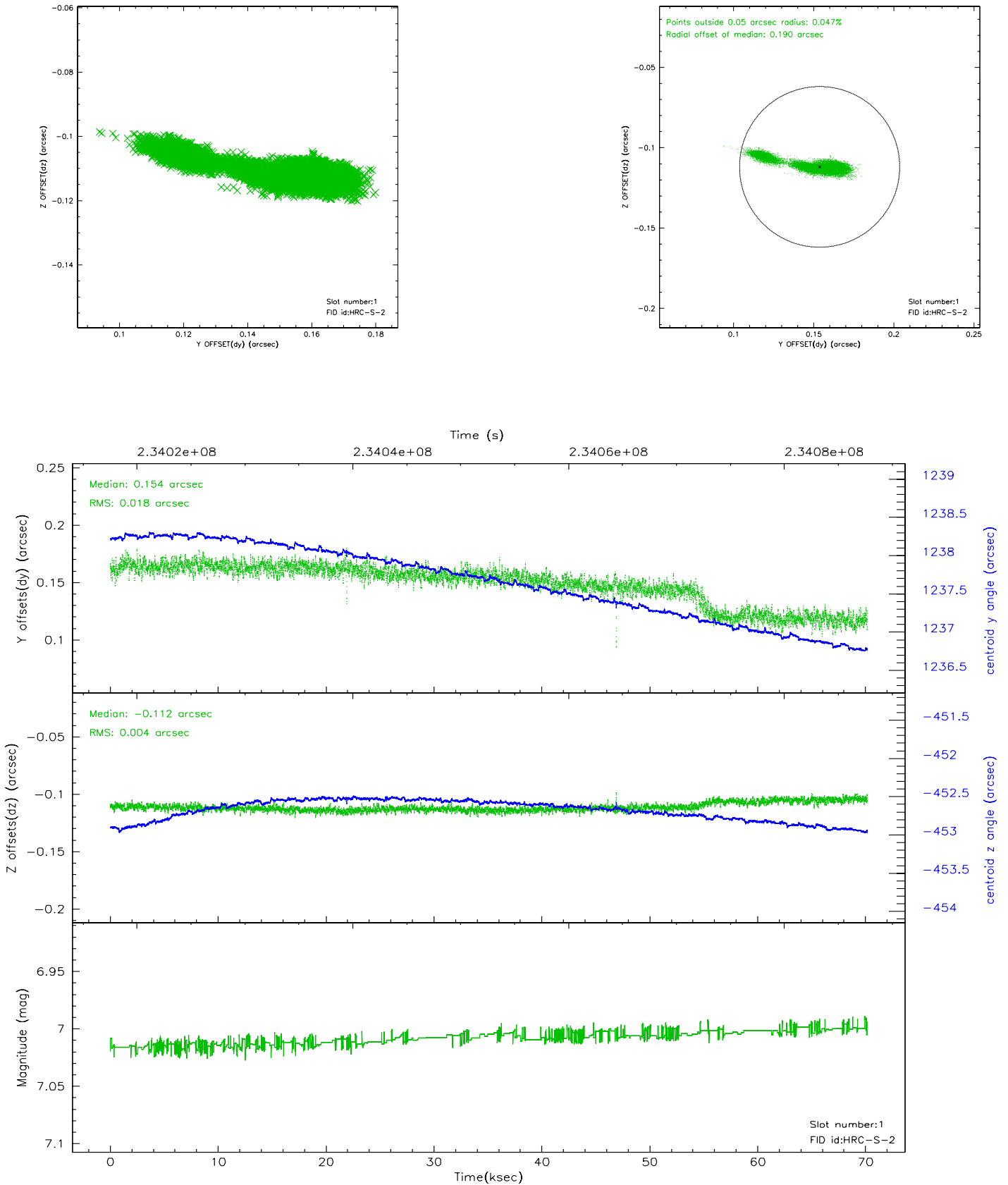


2.5 FID Slots

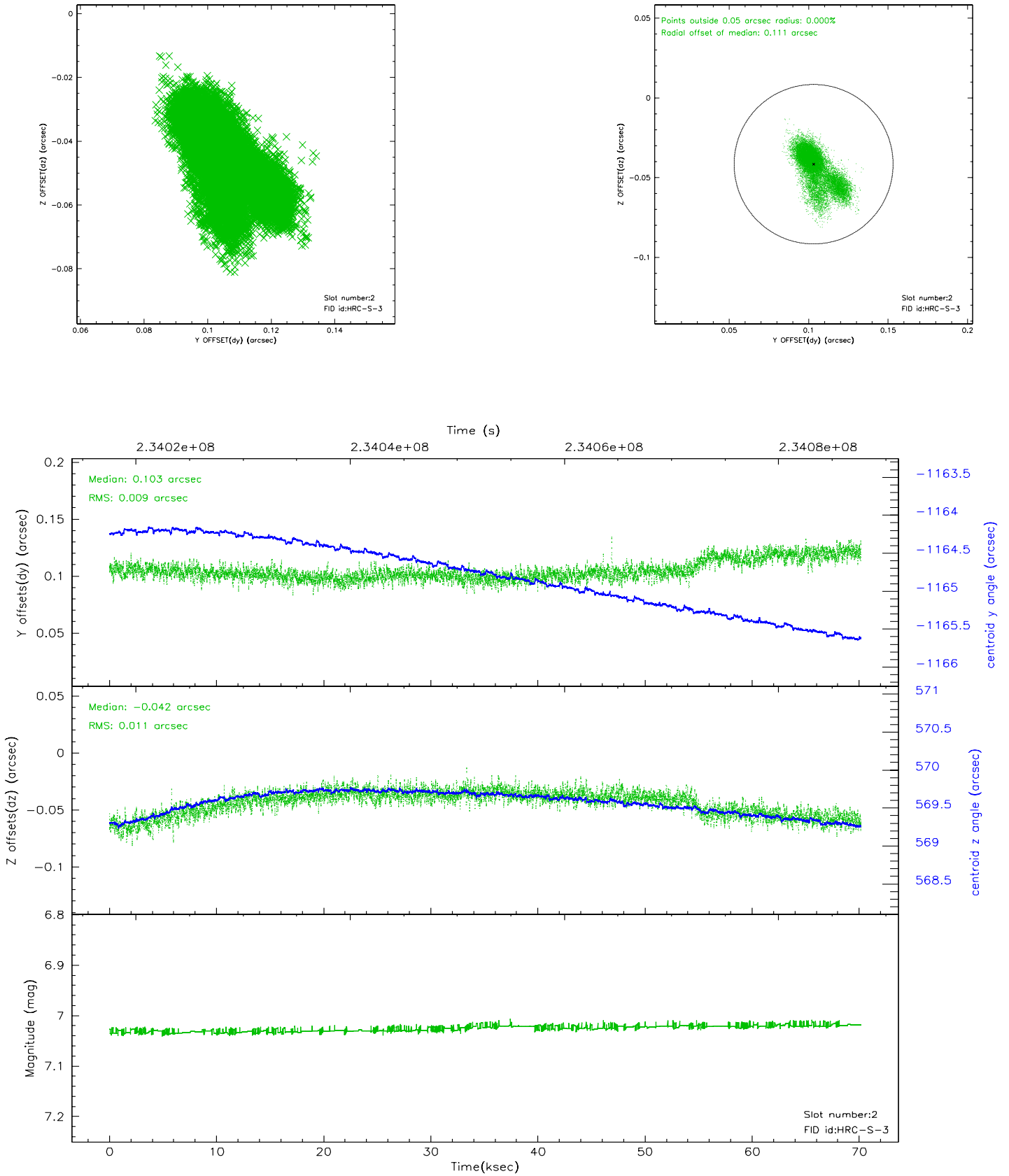
2.5.1 Slot 0



2.5.2 Slot 1

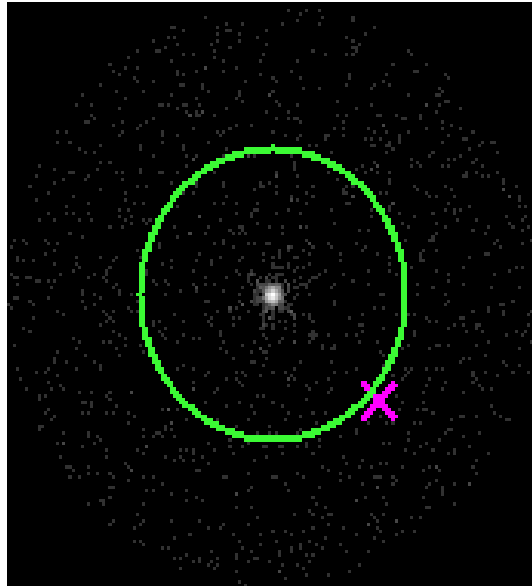


2.5.3 Slot 2



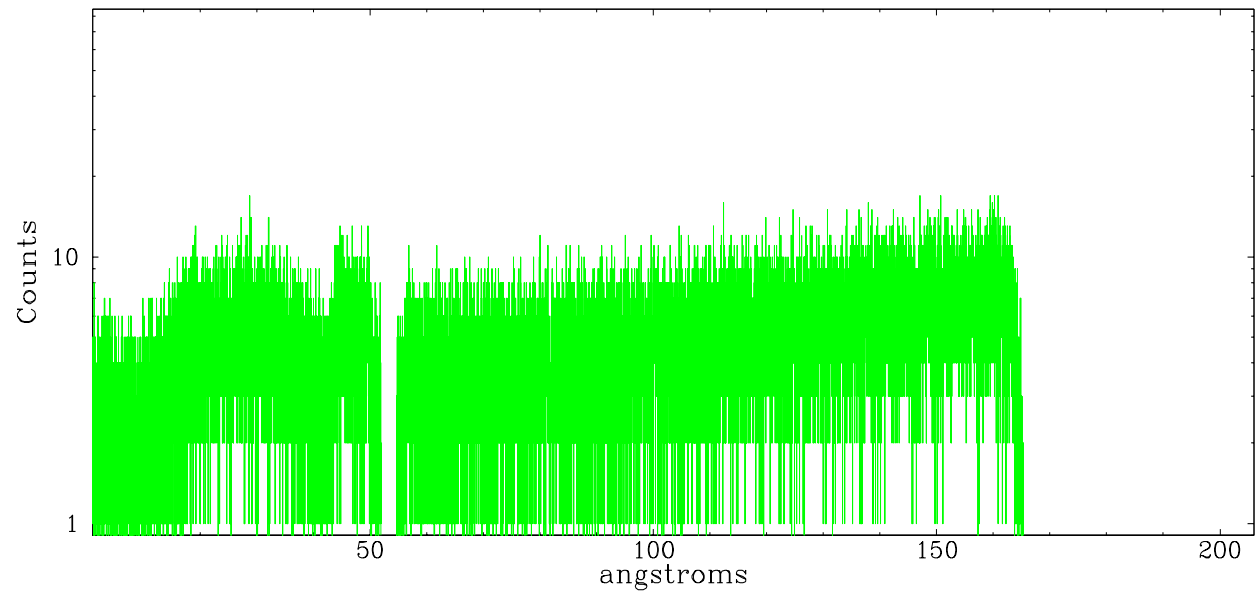
3 Gratings

3.1 LETG Arm

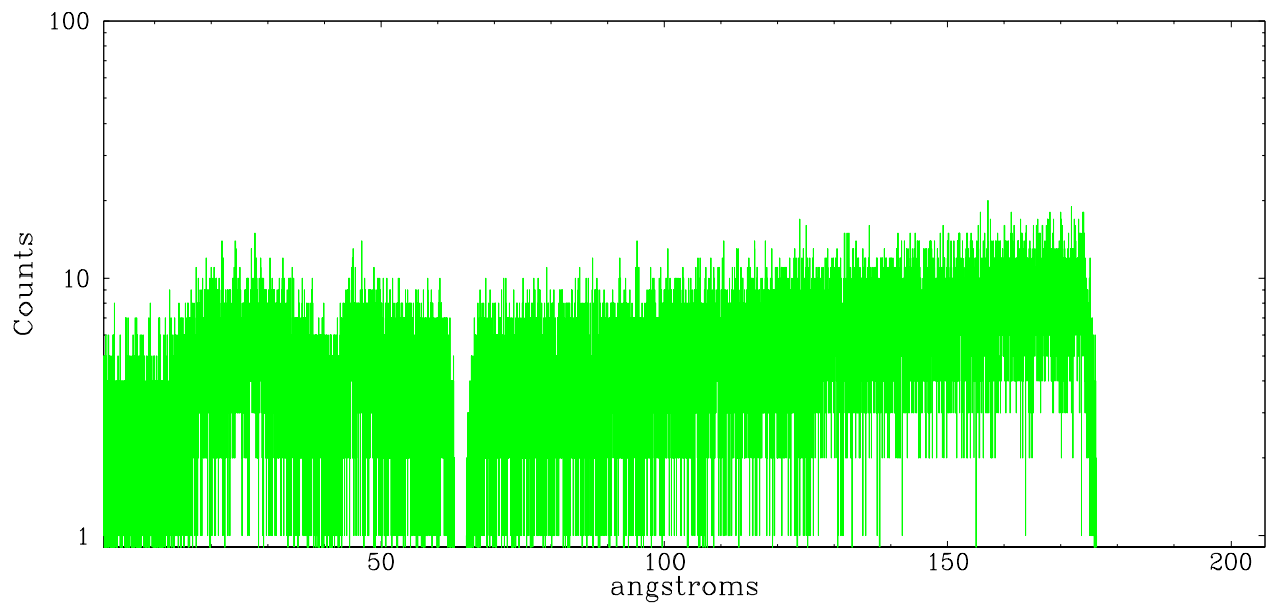


LETG Zero Order

leg order -1



leg order +1



A Summary

A.1 Status

V&V Scientist	Beth Sundheim
V&V Date (YYYY-MM-DD)	2006.03.09
V&V Edition	1
V&V Disposition and Status	OK
V&V Charge Time	70.17278

A.2 Comments