

V&V Reference Report

L2 ASCDS Version : 8.4.5

Observation 55802 - L2 Version 2
Chandra X-Ray Center

L2 Processing Date : Jul 8 2012

Contents

1	Front	2
2	OBI	3
2.1	OBI	3
2.1.1	Images	3
2.1.2	Bias	3
2.1.3	Parameters	4
2.1.4	Events	4
2.2	Compared Parameters	5
2.3	Star Slots	6
2.4	FID Slots	6
A	Summary	7
A.1	Status	7
A.2	Comments	7

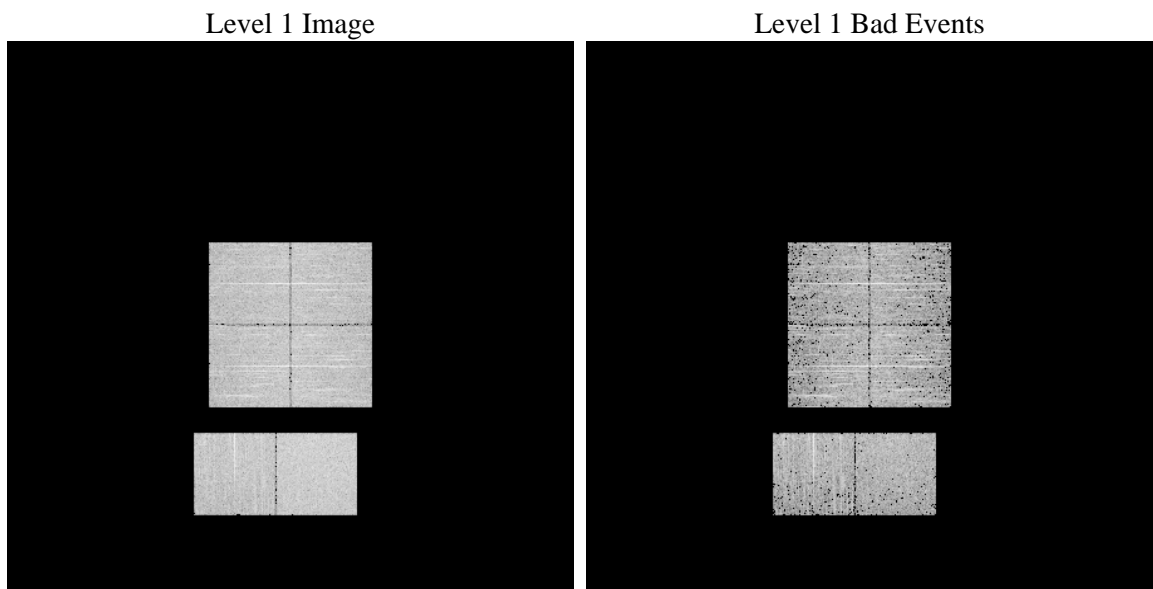
1 Front

seq_num	 	Sequence number
obs_id	55802	Observation id
title	ACIS-012367 diagnostics	Proposal title
observer	CHANDRA engineering request/realtime commanding	Principal investig
object	 	Source name
dtcycle	0	
cycle	P	events from which exps? Prim/Second/Both
ra_targ	0.0	Observer's specified target RA [deg]
dec_targ	0.0	Observer's specified target Dec [deg]
ra_nom	53.599089264672	Nominal RA [deg]
dec_nom	34.871479771923	Nominal Dec [deg]
roll_nom	255.32919124933	Nominal Roll [deg]
revision	2	Processing version of data
ontime	3286.1029191017	Sum of GTIs [s]
livetime	3244.4923052864	Livetime [s]
ontime0	3286.0618790984	Sum of GTIs [s]
ontime1	3286.0208390951	Sum of GTIs [s]
ontime2	3285.9797990918	Sum of GTIs [s]
ontime3	3286.143959105	Sum of GTIs [s]
ontime6	3285.9387590885	Sum of GTIs [s]
ontime7	3286.1029191017	Sum of GTIs [s]
l2events	155566	Number of level 2 events

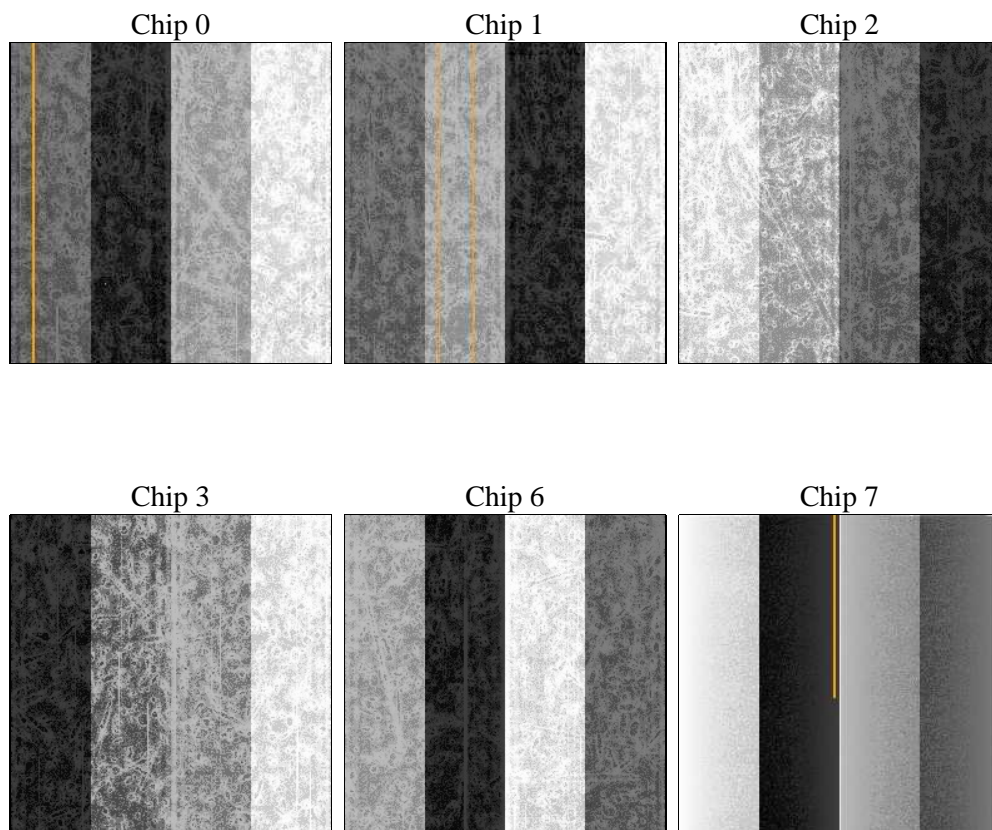
2 OBI

2.1 OBI

2.1.1 Images



2.1.2 Bias



2.1.3 Parameters

obi_num	0	Obi number	sched_exp_time	0.0	[s] Scheduled observation exposure time
ascdsver	8.4.5	Processing system revision	ontime	3286.1029191017	Sum of GTIs [s]
caldsver	4.5.0	 	ontime0	3286.0618790984	Sum of GTIs [s]
date	2012-07-08T08:17:05	Date and time of file creation	ontime1	3286.0208390951	Sum of GTIs [s]
revision	2	Processing version of data	ontime2	3285.9797990918	Sum of GTIs [s]
			ontime3	3286.143959105	Sum of GTIs [s]
			ontime6	3285.9387590885	Sum of GTIs [s]
			ontime7	3286.1029191017	Sum of GTIs [s]
			l1events	310048	Number of level 1 events

2.1.4 Events

	ccd 0	ccd 1	ccd 2	ccd 3	ccd 6	ccd 7		ccd 0	ccd 1	ccd 2	ccd 3	ccd 6	ccd 7
level 1 events	46914	48255	50139	51258	51140	62342	grade 0 events	13205	12883	13278	13535	13235	6814
rejected events	21523	22949	25280	26048	25047	24549		28%	26%	26%	26%	25%	10%
rejected %	45%	47%	50%	50%	48%	39%	grade 1 events	98	80	94	105	79	46
								0%	0%	0%	0%	0%	0%
							grade 2 events	4627	4916	4350	4332	4691	8130
								9%	10%	8%	8%	9%	13%
							grade 3 events	1722	1653	1706	1707	1706	3461
								3%	3%	3%	3%	3%	5%
							grade 4 events	1681	1655	1700	1660	1689	3485
								3%	3%	3%	3%	3%	5%
							grade 5 events	1456	1485	1341	1582	1478	3990
								3%	3%	2%	3%	2%	6%
							grade 6 events	4156	4199	3825	3976	4772	15903
								8%	8%	7%	7%	9%	25%
							grade 7 events	19969	21384	23845	24361	23490	20513
								42%	44%	47%	47%	45%	32%

2.2 Compared Parameters

Parameter	Planned	Actual	Parameter	Planned	Actual
Instrument	ACIS	ACIS	Obspar format version number	7	7
Detector	ACIS-012367	ACIS-012367	Obspar file type	PREDICTED	ACTUAL
Grating	NONE	NONE	Obspar update status	NONE	UPDATED
Data mode	FAINT	FAINT	Number of optional ACIS chips dropped	0	0
Observation mode	SECONDARY	SECONDARY	On-chip summing requested	N	N
[deg] Pointing RA	0	53.59908926467193	Subarray requested	NONE	NONE
[deg] Pointing Dec	0	34.87147977192284	Alternating exposures requested	N	N
[deg] Pointing Roll	0.0	255.3291912493343	[s] Primary exposure time	3.2	3.2
[mm] SIM focus pos	-1.429586	-1.428180813131781			
[mm] SIM defocus	0.1037507710433287	0.1051558262725154			
[mm] SIM translation stage pos	250.455976	250.466033080201			
[mm] SIM translation stage offset	0	-0.01005468664627074			
[s] Observation start time (MET)	408957870.194559	408957869.16956			
Observation start date	2010-12-17T07:24:30	2010-12-17T07:24:29			
[s] Observation end time (MET)	408969717.14517	408969716.12017			
Observation end date	2010-12-17T10:41:57	2010-12-17T10:41:56			
Read mode	TIMED	TIMED			

2.3 Star Slots

2.4 FID Slots

A Summary

A.1 Status

V&V Scientist	Beth Sundheim
V&V Date (YYYY-MM-DD)	2012.07.17
V&V Edition	1
V&V Disposition and Status	OK
V&V Charge Time	3.2861029191017

A.2 Comments