

V&V Reference Report

L2 ASCDS Version : 8.4.5

Observation 55792 - L2 Version 2
Chandra X-Ray Center

L2 Processing Date : Jul 8 2012

Contents

1	Front	2
2	OBI	3
2.1	OBI	3
2.1.1	Images	3
2.1.2	Bias	3
2.1.3	Parameters	4
2.1.4	Events	4
2.2	Compared Parameters	5
2.3	Star Slots	6
2.4	FID Slots	6
A	Summary	7
A.1	Status	7
A.2	Comments	7

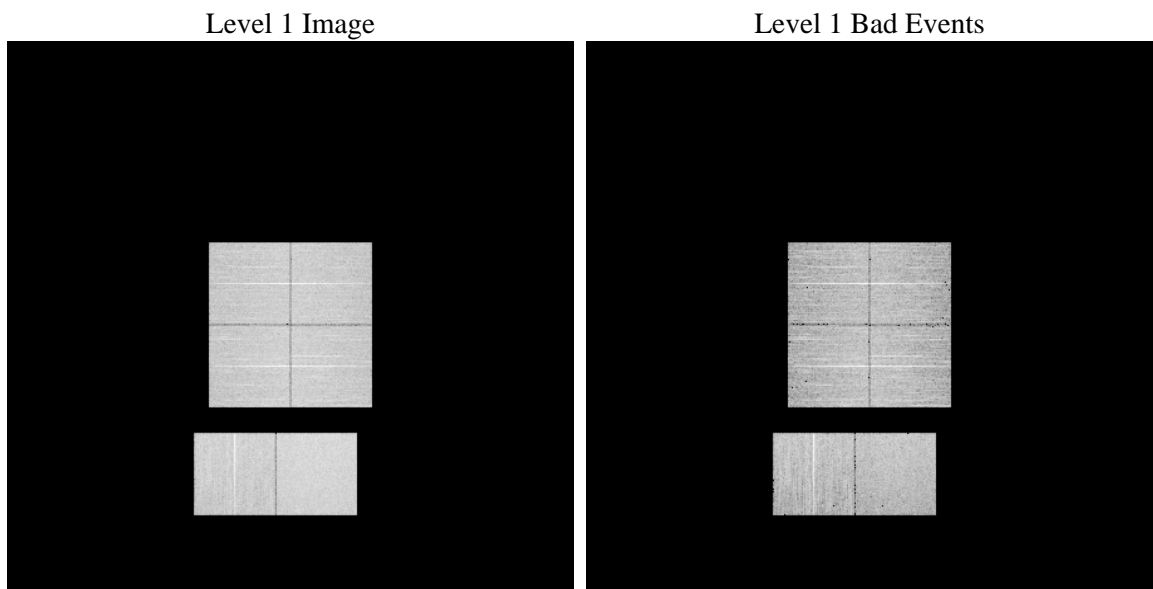
1 Front

seq_num	 	Sequence number
obs_id	55792	Observation id
title	ACIS-012367 diagnostics	Proposal title
observer	CHANDRA engineering request/realtime commanding	Principal investig
object	 	Source name
dtcycle	0	
cycle	P	events from which exps? Prim/Second/Both
ra_targ	0.0	Observer's specified target RA [deg]
dec_targ	0.0	Observer's specified target Dec [deg]
ra_nom	119.98847287394	Nominal RA [deg]
dec_nom	21.026546470602	Nominal Dec [deg]
roll_nom	79.316591032257	Nominal Roll [deg]
revision	2	Processing version of data
ontime	8284.0490068793	Sum of GTIs [s]
livetime	8179.1513902988	Livetime [s]
ontime0	8284.0778977871	Sum of GTIs [s]
ontime1	8284.0778977871	Sum of GTIs [s]
ontime2	8284.0778977871	Sum of GTIs [s]
ontime3	8284.007966876	Sum of GTIs [s]
ontime6	8284.6647000909	Sum of GTIs [s]
ontime7	8284.0490068793	Sum of GTIs [s]
l2events	341534	Number of level 2 events

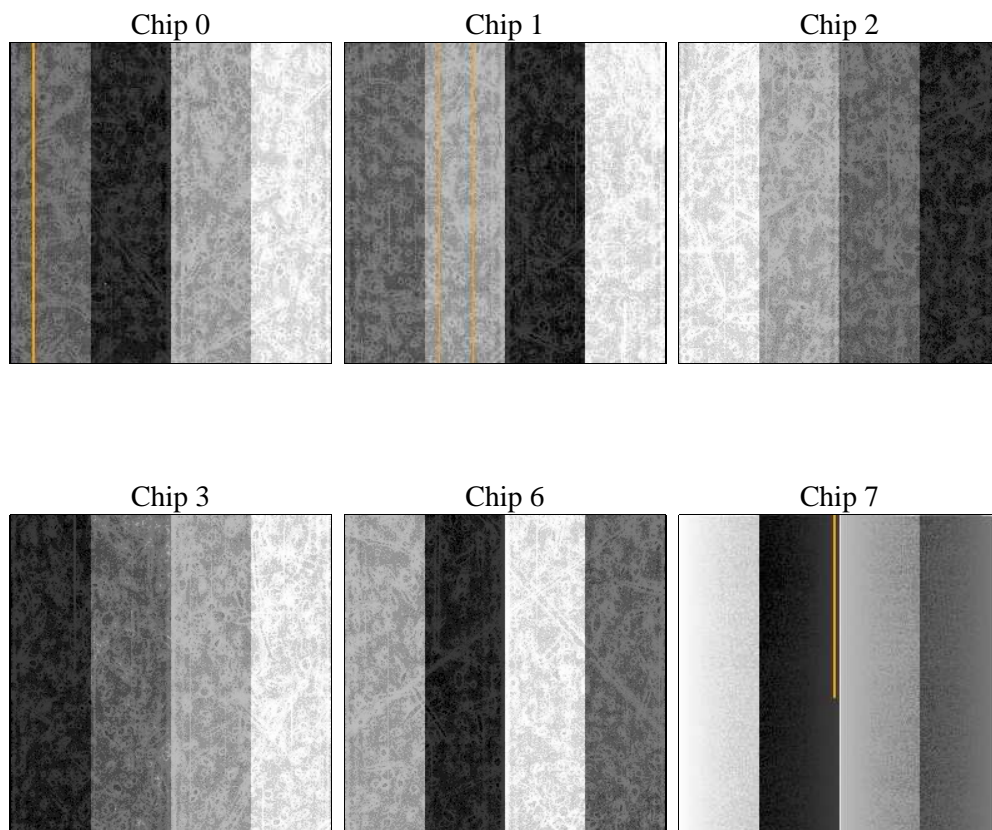
2 OBI

2.1 OBI

2.1.1 Images



2.1.2 Bias



2.1.3 Parameters

obi_num	0	Obi number	sched_exp_time	0.0	[s] Scheduled observation exposure time
ascdsver	8.4.5	Processing system revision	ontime	8284.0490068793	Sum of GTIs [s]
caldsver	4.5.0	 	ontime0	8284.0778977871	Sum of GTIs [s]
date	2012-07-08T20:02:58	Date and time of file creation	ontime1	8284.0778977871	Sum of GTIs [s]
revision	2	Processing version of data	ontime2	8284.0778977871	Sum of GTIs [s]
			ontime3	8284.007966876	Sum of GTIs [s]
			ontime6	8284.6647000909	Sum of GTIs [s]
			ontime7	8284.0490068793	Sum of GTIs [s]
			l1events	725941	Number of level 1 events

2.1.4 Events

	ccd 0	ccd 1	ccd 2	ccd 3	ccd 6	ccd 7		ccd 0	ccd 1	ccd 2	ccd 3	ccd 6	ccd 7
level 1 events	110563	110760	115399	117862	122720	148637	grade 0 events	28750	27813	29355	30013	28861	14457
rejected events	56221	55910	61198	62764	66380	62518		26%	25%	25%	25%	23%	9%
rejected %	50%	50%	53%	53%	54%	42%	grade 1 events	173	150	196	176	134	116
								0%	0%	0%	0%	0%	0%
							grade 2 events	9783	10982	9167	9369	10483	18922
								8%	9%	7%	7%	8%	12%
							grade 3 events	3754	3504	3705	3839	3657	7587
								3%	3%	3%	3%	2%	5%
							grade 4 events	3711	3620	3833	3805	3681	7419
								3%	3%	3%	3%	2%	4%
							grade 5 events	3524	3523	3458	3932	3635	9484
								3%	3%	2%	3%	2%	6%
							grade 6 events	8344	8931	8141	8072	9680	37734
								7%	8%	7%	6%	7%	25%
							grade 7 events	52524	52237	57544	58656	62589	52918
								47%	47%	49%	49%	51%	35%

2.2 Compared Parameters

Parameter	Planned	Actual	Parameter	Planned	Actual
Instrument	ACIS	ACIS	Obspar format version number	7	7
Detector	ACIS-012367	ACIS-012367	Obspar file type	PREDICTED	ACTUAL
Grating	NONE	NONE	Obspar update status	NONE	UPDATED
Data mode	FAINT	FAINT	Number of optional ACIS chips dropped	0	0
Observation mode	SECONDARY	SECONDARY	On-chip summing requested	N	N
[deg] Pointing RA	0	119.988472873944	Subarray requested	NONE	NONE
[deg] Pointing Dec	0	21.02654647060178	Alternating exposures requested	N	N
[deg] Pointing Roll	0.0	79.31659103225662	[s] Primary exposure time	3.2	3.2
[mm] SIM focus pos	-1.429586	-1.428180813131781			
[mm] SIM defocus	0.1037507710433287	0.1051558262725154			
[mm] SIM translation stage pos	250.455976	250.466033080201			
[mm] SIM translation stage offset	0	-0.01005468664627074			
[s] Observation start time (MET)	409214975.057823	409214974.03283			
Observation start date	2010-12-20T06:49:35	2010-12-20T06:49:34			
[s] Observation end time (MET)	409225671.958375	409225670.93338			
Observation end date	2010-12-20T09:47:52	2010-12-20T09:47:50			
Read mode	TIMED	TIMED			

2.3 Star Slots

2.4 FID Slots

A Summary

A.1 Status

V&V Scientist	Beth Sundheim
V&V Date (YYYY-MM-DD)	2012.07.13
V&V Edition	1
V&V Disposition and Status	OK
V&V Charge Time	8.2840490068793

A.2 Comments