

# V&V Reference Report

## L2 ASCDS Version : 8.4.5

Observation 55772 - L2 Version 2  
Chandra X-Ray Center

L2 Processing Date : Jul 8 2012

## Contents

<b>1</b>	<b>Front</b>	<b>2</b>
<b>2</b>	<b>OBI</b>	<b>3</b>
2.1	OBI . . . . .	3
2.1.1	Images . . . . .	3
2.1.2	Bias . . . . .	3
2.1.3	Parameters . . . . .	4
2.1.4	Events . . . . .	4
2.2	Compared Parameters . . . . .	5
2.3	Star Slots . . . . .	6
2.4	FID Slots . . . . .	6
<b>A</b>	<b>Summary</b>	<b>7</b>
A.1	Status . . . . .	7
A.2	Comments . . . . .	7

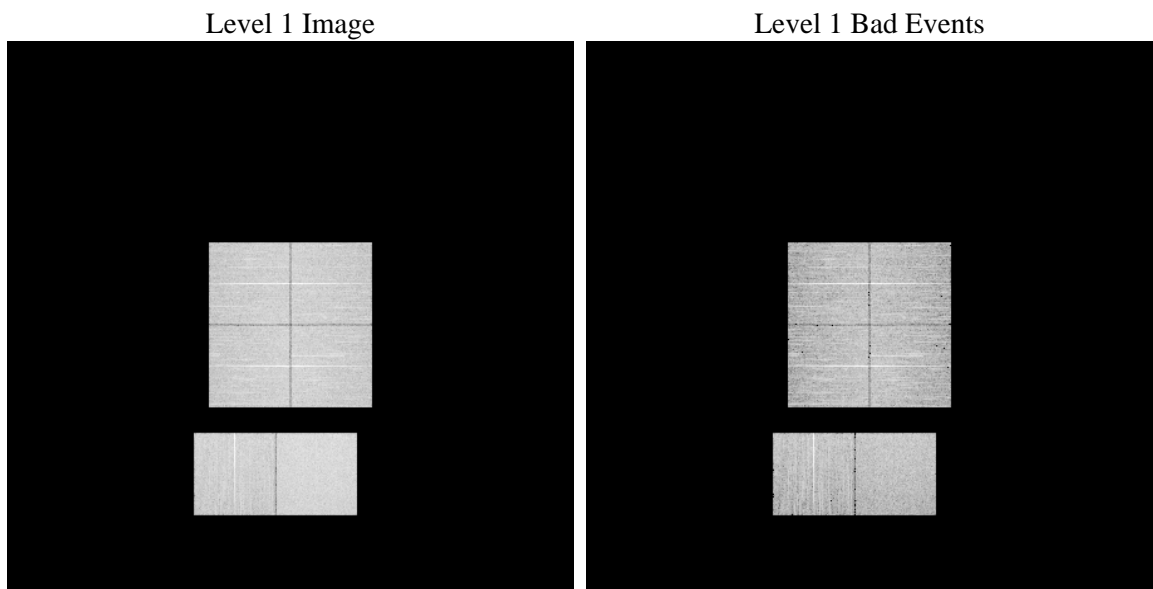
# 1 Front

seq_num	&#160	Sequence number
obs_id	55772	Observation id
title	ACIS-012367 diagnostics	Proposal title
observer	CHANDRA engineering request/realtime commanding	Principal investig
object	&#160	Source name
dtcycle	0	&#160
cycle	P	events from which exps? Prim/Second/Both
ra_targ	0.0	Observer's specified target RA [deg]
dec_targ	0.0	Observer's specified target Dec [deg]
ra_nom	329.0120040888	Nominal RA [deg]
dec_nom	-7.5265194676384	Nominal Dec [deg]
roll_nom	293.74750977562	Nominal Roll [deg]
revision	2	Processing version of data
ontime	8286.8780879974	Sum of GTIs [s]
livetime	8181.9446478883	Livetime [s]
ontime0	8286.8370479941	Sum of GTIs [s]
ontime1	8286.7960079908	Sum of GTIs [s]
ontime2	8286.7549679875	Sum of GTIs [s]
ontime3	8286.9191280007	Sum of GTIs [s]
ontime6	8286.7139279842	Sum of GTIs [s]
ontime7	8286.8780879974	Sum of GTIs [s]
l2events	346571	Number of level 2 events

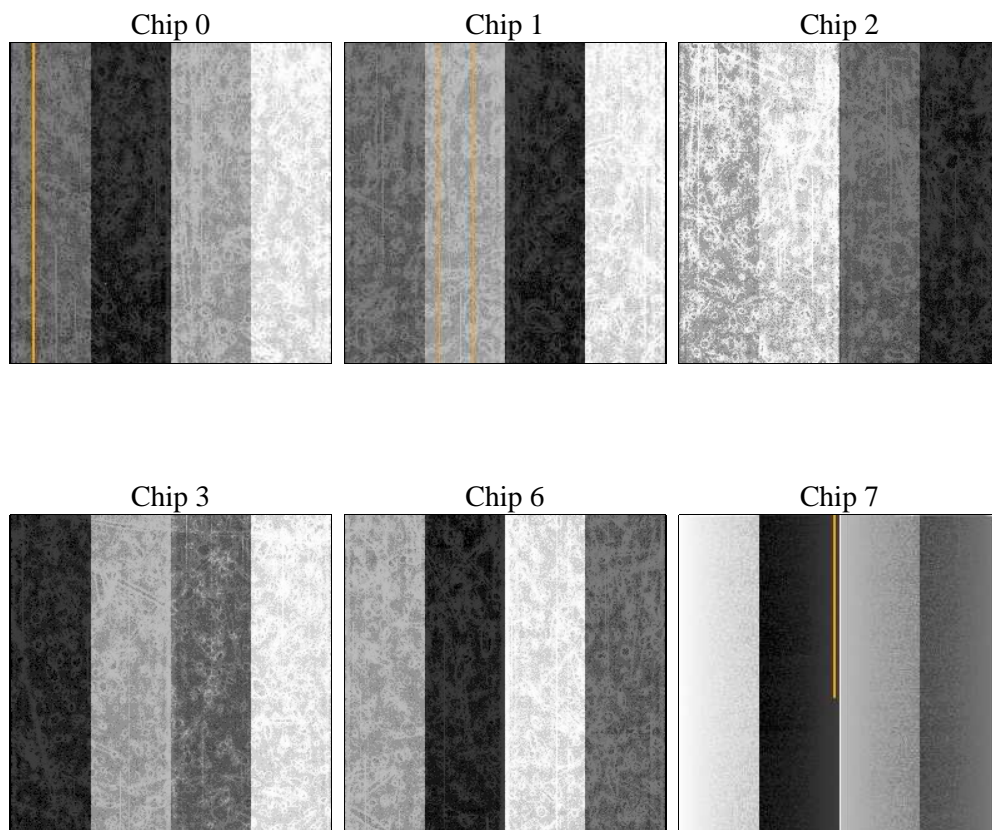
## 2 OBI

### 2.1 OBI

#### 2.1.1 Images



#### 2.1.2 Bias



### 2.1.3 Parameters

obi_num	0	Obi number	sched_exp_time	0.0	[s] Scheduled observation exposure time
ascdsver	8.4.5	Processing system revision	ontime	8286.8780879974	Sum of GTIs [s]
caldsver	4.5.0	&#160	ontime0	8286.8370479941	Sum of GTIs [s]
date	2012-07-08T23:08:21	Date and time of file creation	ontime1	8286.7960079908	Sum of GTIs [s]
revision	2	Processing version of data	ontime2	8286.7549679875	Sum of GTIs [s]
			ontime3	8286.9191280007	Sum of GTIs [s]
			ontime6	8286.7139279842	Sum of GTIs [s]
			ontime7	8286.8780879974	Sum of GTIs [s]
			l1events	733219	Number of level 1 events

### 2.1.4 Events

	ccd 0	ccd 1	ccd 2	ccd 3	ccd 6	ccd 7		ccd 0	ccd 1	ccd 2	ccd 3	ccd 6	ccd 7
level 1 events	114478	113231	116020	118126	120324	151040	grade 0 events	28952	28588	29542	29853	29684	15096
rejected events	59440	57733	60866	62754	63023	62620		25%	25%	25%	25%	24%	9%
rejected %	51%	50%	52%	53%	52%	41%	grade 1 events	195	155	206	215	190	146
								0%	0%	0%	0%	0%	0%
							grade 2 events	10211	10630	9934	9768	10328	19052
								8%	9%	8%	8%	8%	12%
							grade 3 events	3764	3827	3778	3768	3769	8010
								3%	3%	3%	3%	3%	5%
							grade 4 events	3608	3769	3754	3843	3720	7976
								3%	3%	3%	3%	3%	5%
							grade 5 events	3754	3809	3543	3956	3864	10015
								3%	3%	3%	3%	3%	6%
							grade 6 events	8503	8684	8146	8140	9800	38286
								7%	7%	7%	6%	8%	25%
							grade 7 events	55491	53769	57117	58583	58969	52459
								48%	47%	49%	49%	49%	34%

## 2.2 Compared Parameters

Parameter	Planned	Actual	Parameter	Planned	Actual
Instrument	ACIS	ACIS	Obspar format version number	7	7
Detector	ACIS-012367	ACIS-012367	Obspar file type	PREDICTED	ACTUAL
Grating	NONE	NONE	Obspar update status	NONE	UPDATED
Data mode	FAINT	FAINT	Number of optional ACIS chips dropped	0	0
Observation mode	SECONDARY	SECONDARY	On-chip summing requested	N	N
[deg] Pointing RA	0	329.0120040888041	Subarray requested	NONE	NONE
[deg] Pointing Dec	0	-7.526519467638431	Alternating exposures requested	N	N
[deg] Pointing Roll	0.0	293.7475097756168	[s] Primary exposure time	3.2	3.2
[mm] SIM focus pos	-1.429586	-1.428180813131781			
[mm] SIM defocus	0.1037507710433287	0.1051558262725154			
[mm] SIM translation stage pos	250.455976	250.466033080201			
[mm] SIM translation stage offset	0	-0.01005468664627074			
[s] Observation start time (MET)	409900862.043225	409900861.01823			
Observation start date	2010-12-28T05:21:02	2010-12-28T05:21:01			
[s] Observation end time (MET)	409910613.893729	409910612.86873			
Observation end date	2010-12-28T08:03:34	2010-12-28T08:03:32			
Read mode	TIMED	TIMED			

## 2.3 Star Slots

## 2.4 FID Slots

## **A Summary**

### **A.1 Status**

V&V Scientist	Jen Lauer
V&V Date (YYYY-MM-DD)	2012.07.18
V&V Edition	1
V&V Disposition and Status	OK
V&V Charge Time	8.2868780879974

### **A.2 Comments**