

V&V Reference Report

L2 ASCDS Version : 8.4.3

Observation 55672 - L2 Version 2
Chandra X-Ray Center

L2 Processing Date : Feb 3 2012

Contents

1	Front	2
2	OBI	3
2.1	OBI	3
2.1.1	Images	3
2.1.2	Bias	3
2.1.3	Parameters	4
2.1.4	Events	4
2.2	Compared Parameters	5
2.3	Star Slots	6
2.4	FID Slots	6
A	Summary	7
A.1	Status	7
A.2	Comments	7

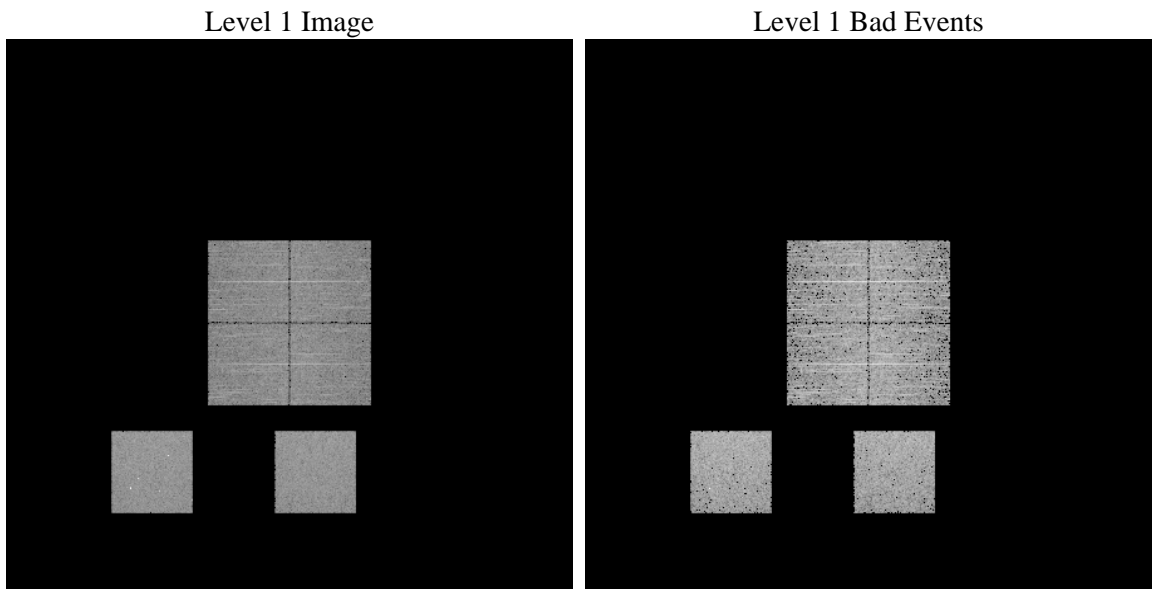
1 Front

seq_num	 	Sequence number
obs_id	55672	Observation id
title	ACIS-012357 diagnostics	Proposal title
observer	CHANDRA engineering request/realtime commanding	Principal investig
object	 	Source name
dtcycle	0	
cycle	P	events from which exps? Prim/Second/Both
ra_targ	0.0	Observer's specified target RA [deg]
dec_targ	0.0	Observer's specified target Dec [deg]
ra_nom	308.02612201837	Nominal RA [deg]
dec_nom	40.021713369675	Nominal Dec [deg]
roll_nom	12.360072958951	Nominal Roll [deg]
revision	2	Processing version of data
ontime	3218.4545513988	Sum of GTIs [s]
livetime	3177.7005419483	Livetime [s]
ontime0	3218.4135113955	Sum of GTIs [s]
ontime1	3218.3724713922	Sum of GTIs [s]
ontime2	3218.3314313889	Sum of GTIs [s]
ontime3	3218.4955914021	Sum of GTIs [s]
ontime5	3218.2903913856	Sum of GTIs [s]
ontime7	3218.4545513988	Sum of GTIs [s]
l2events	145073	Number of level 2 events

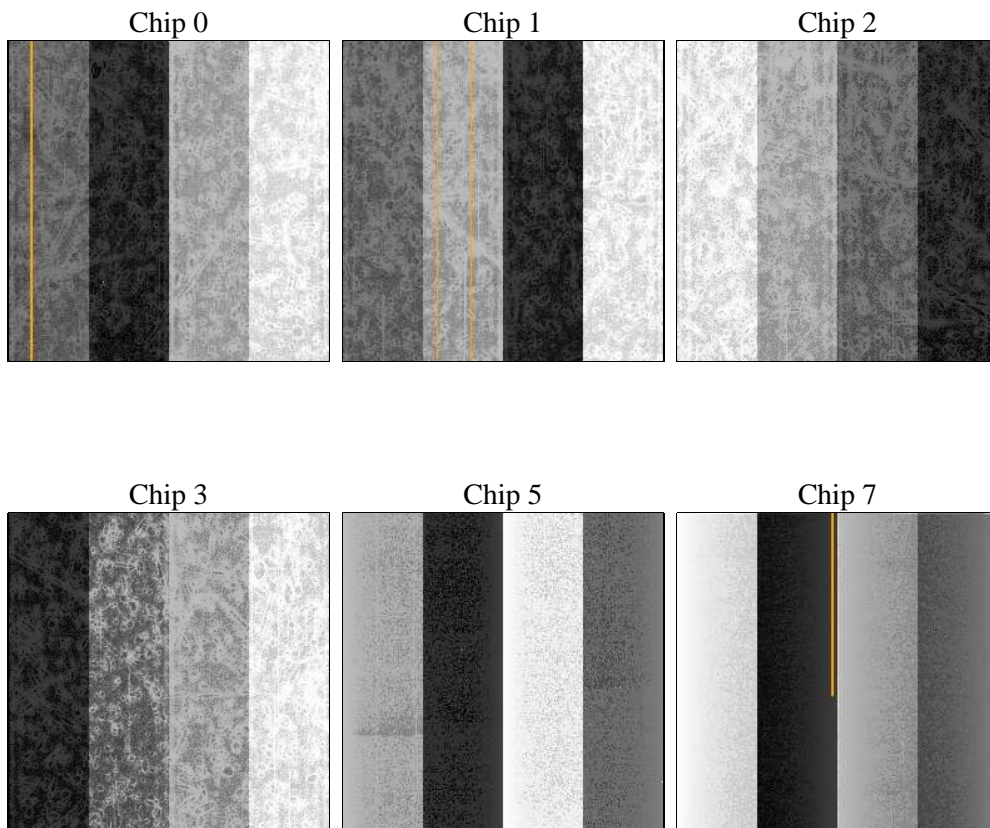
2 OBI

2.1 OBI

2.1.1 Images



2.1.2 Bias



2.1.3 Parameters

obi_num	0	Obi number	sched_exp_time	0.0	[s] Scheduled observation exposure time
ascdsver	8.4.3	Processing system revision	ontime	3218.4545513988	Sum of GTIs [s]
caldsver	4.4.7	 	ontime0	3218.4135113955	Sum of GTIs [s]
date	2012-02-03T16:52:03	Date and time of file creation	ontime1	3218.3724713922	Sum of GTIs [s]
revision	2	Processing version of data	ontime2	3218.3314313889	Sum of GTIs [s]
			ontime3	3218.4955914021	Sum of GTIs [s]
			ontime5	3218.2903913856	Sum of GTIs [s]
			ontime7	3218.4545513988	Sum of GTIs [s]
			l1events	300073	Number of level 1 events

2.1.4 Events

	ccd 0	ccd 1	ccd 2	ccd 3	ccd 5	ccd 7		ccd 0	ccd 1	ccd 2	ccd 3	ccd 5	ccd 7
level 1 events	44078	44434	45714	45350	61731	58766	grade 0 events	11239	10977	11612	11476	5650	5914
rejected events	23319	23403	24605	24280	25944	25008		25%	24%	25%	25%	9%	10%
rejected %	52%	52%	53%	53%	42%	42%	grade 1 events	71	62	73	72	180	46
								0%	0%	0%	0%	0%	0%
							grade 2 events	3894	4162	3840	3843	12681	7530
								8%	9%	8%	8%	20%	12%
							grade 3 events	1493	1395	1476	1439	1598	3185
								3%	3%	3%	3%	2%	5%
							grade 4 events	1412	1481	1476	1517	1602	3133
								3%	3%	3%	3%	2%	5%
							grade 5 events	1443	1485	1451	1608	3326	4005
								3%	3%	3%	3%	5%	6%
							grade 6 events	3167	3475	3160	3239	15006	14714
								7%	7%	6%	7%	24%	25%
							grade 7 events	21359	21397	22626	22156	21688	20239
								48%	48%	49%	48%	35%	34%

2.2 Compared Parameters

Parameter	Planned	Actual
Instrument	ACIS	ACIS
Detector	ACIS-012357	ACIS-012357
Grating	NONE	NONE
Data mode	FAINT	FAINT
Observation mode	SECONDARY	SECONDARY
[deg] Pointing RA	0	308.0261220183664
[deg] Pointing Dec	0	40.02171336967454
[deg] Pointing Roll	0.0	12.36007295895119
[mm] SIM focus pos	-1.4281808131	-1.4281808131
[mm] SIM defocus	0.1051557500557434	0.1051557500557434
[mm] SIM translation stage pos	250.4660330802	250.4660330802
[mm] SIM translation stage offset	-0.01005726120527584	-0.01005726120527584
[s] Observation start time (MET)	413299225.118918	413299225.118918
Observation start date	2011-02-05T13:20:25	2011-02-05T13:20:25
[s] Observation end time (MET)	413303771.418984	413303771.418984
Observation end date	2011-02-05T14:36:11	2011-02-05T14:36:11
Read mode	TIMED	TIMED

Parameter	Planned	Actual
Obspar format version number	7	7
Obspar file type	PREDICTED	ACTUAL
Obspar update status	OVERRIDE	OVERRIDE
Number of optional ACIS chips dropped	0	0
On-chip summing requested	N	N
Subarray requested	NONE	NONE
Alternating exposures requested	N	N
[s] Primary exposure time	3.2	3.2

2.3 Star Slots

2.4 FID Slots

A Summary

A.1 Status

V&V Scientist	Jen Lauer
V&V Date (YYYY-MM-DD)	2012.02.06
V&V Edition	1
V&V Disposition and Status	OK
V&V Charge Time	3.2184545513988

A.2 Comments