

V&V Reference Report

L2 ASCDS Version : 8.4.3

Observation 55602 - L2 Version 2
Chandra X-Ray Center

L2 Processing Date : Feb 5 2012

Contents

1	Front	2
2	OBI	3
2.1	OBI	3
2.1.1	Images	3
2.1.2	Bias	3
2.1.3	Parameters	4
2.1.4	Events	4
2.2	Compared Parameters	5
2.3	Star Slots	6
2.4	FID Slots	6
A	Summary	7
A.1	Status	7
A.2	Comments	7

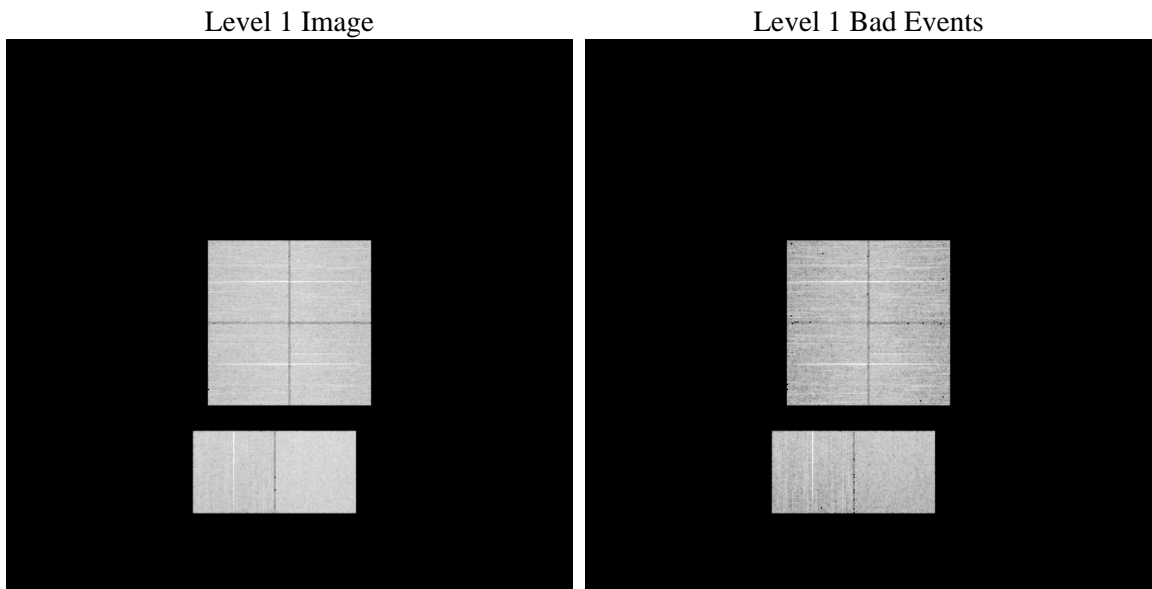
1 Front

seq_num	 	Sequence number
obs_id	55602	Observation id
title	ACIS-012367 diagnostics	Proposal title
observer	CHANDRA engineering request/realtime commanding	Principal investig
object	 	Source name
dtycle	0	
cycle	P	events from which exps? Prim/Second/Both
ra_targ	0.0	Observer's specified target RA [deg]
dec_targ	0.0	Observer's specified target Dec [deg]
ra_nom	187.96984208597	Nominal RA [deg]
dec_nom	22.80712653012	Nominal Dec [deg]
roll_nom	132.82471331377	Nominal Roll [deg]
revision	2	Processing version of data
ontime	8226.071033299	Sum of GTIs [s]
livetime	8121.90756873	Livetime [s]
ontime0	8226.0299932957	Sum of GTIs [s]
ontime1	8225.9889532924	Sum of GTIs [s]
ontime2	8225.9479132891	Sum of GTIs [s]
ontime3	8226.1120733023	Sum of GTIs [s]
ontime6	8225.9068732858	Sum of GTIs [s]
ontime7	8226.071033299	Sum of GTIs [s]
l2events	325229	Number of level 2 events

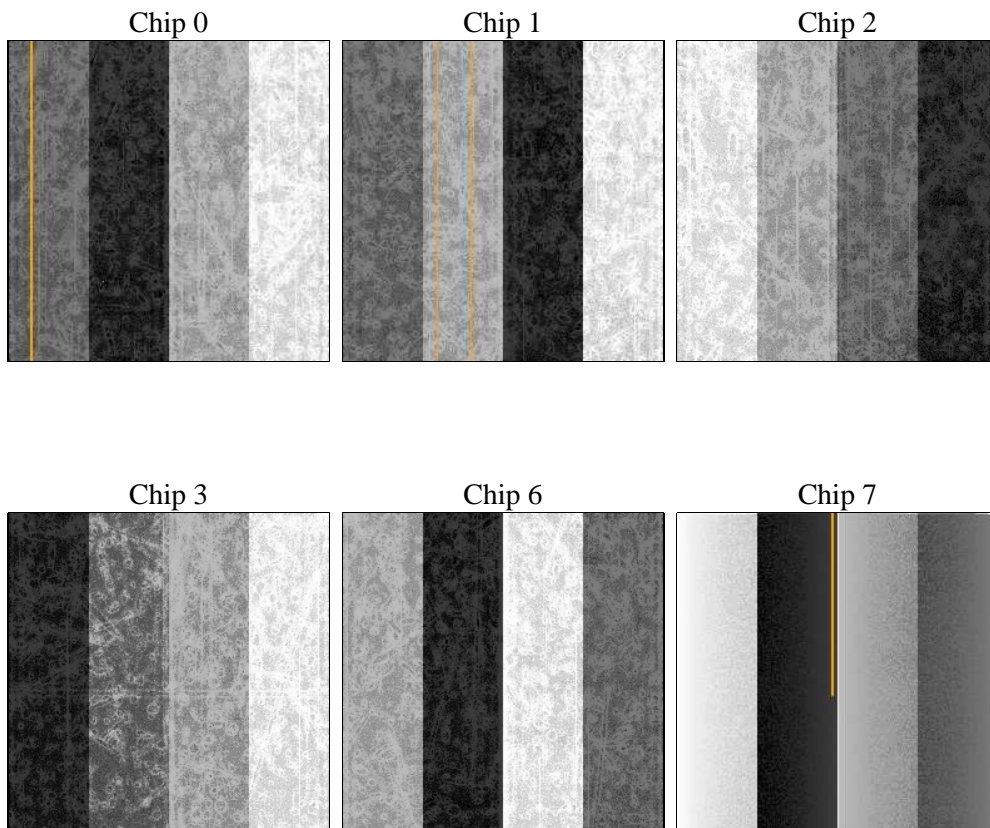
2 OBI

2.1 OBI

2.1.1 Images



2.1.2 Bias



2.1.3 Parameters

obi_num	1	Obi number	sched_exp_time	0.0	[s] Scheduled observation exposure time
ascdsver	8.4.3	Processing system revision	ontime	8226.071033299	Sum of GTIs [s]
caldsver	4.4.7	 	ontime0	8226.0299932957	Sum of GTIs [s]
date	2012-02-05T17:52:13	Date and time of file creation	ontime1	8225.9889532924	Sum of GTIs [s]
revision	2	Processing version of data	ontime2	8225.9479132891	Sum of GTIs [s]
			ontime3	8226.1120733023	Sum of GTIs [s]
			ontime6	8225.9068732858	Sum of GTIs [s]
			ontime7	8226.071033299	Sum of GTIs [s]
			l1events	721867	Number of level 1 events

2.1.4 Events

	ccd 0	ccd 1	ccd 2	ccd 3	ccd 6	ccd 7		ccd 0	ccd 1	ccd 2	ccd 3	ccd 6	ccd 7
level 1 events	112580	114785	111920	116948	117225	148409	grade 0 events	27374	26646	28022	28361	27090	13728
rejected events	60466	62228	60800	64801	63832	65174		24%	23%	25%	24%	23%	9%
rejected %	53%	54%	54%	55%	54%	43%	grade 1 events	175	142	192	209	144	105
								0%	0%	0%	0%	0%	0%
							grade 2 events	9751	10767	8750	9286	10326	18418
								8%	9%	7%	7%	8%	12%
							grade 3 events	3616	3425	3651	3655	3412	7197
								3%	2%	3%	3%	2%	4%
							grade 4 events	3535	3501	3462	3528	3415	7187
								3%	3%	3%	3%	2%	4%
							grade 5 events	3695	3613	3441	3989	3705	9730
								3%	3%	3%	3%	3%	6%
							grade 6 events	8252	8582	7619	7707	9544	37279
								7%	7%	6%	6%	8%	25%
							grade 7 events	56182	58109	56783	60213	59589	54765
								49%	50%	50%	51%	50%	36%

2.2 Compared Parameters

Parameter	Planned	Actual	Parameter	Planned	Actual
Instrument	ACIS	ACIS	Obspar format version number	7	7
Detector	ACIS-012367	ACIS-012367	Obspar file type	PREDICTED	ACTUAL
Grating	NONE	NONE	Obspar update status	NONE	UPDATED
Data mode	FAINT	FAINT	Number of optional ACIS chips dropped	0	0
Observation mode	SECONDARY	SECONDARY	On-chip summing requested	N	N
[deg] Pointing RA	0	187.969842085967	Subarray requested	NONE	NONE
[deg] Pointing Dec	0	22.80712653011956	Alternating exposures requested	N	N
[deg] Pointing Roll	0.0	132.8247133137718	[s] Primary exposure time	3.2	3.2
[mm] SIM focus pos	-1.429586	-1.428180813131781			
[mm] SIM defocus	0.1037507710433287	0.1051558262725154			
[mm] SIM translation stage pos	250.455976	250.466033080201			
[mm] SIM translation stage offset	0	-0.01005468664627074			
[s] Observation start time (MET)	416070741.212387	416070740.18738			
Observation start date	2011-03-09T15:12:21	2011-03-09T15:12:20			
[s] Observation end time (MET)	416080741.112906	416080740.0879			
Observation end date	2011-03-09T17:59:01	2011-03-09T17:59:00			
Read mode	TIMED	TIMED			

2.3 Star Slots

2.4 FID Slots

A Summary

A.1 Status

V&V Scientist	Jen Lauer
V&V Date (YYYY-MM-DD)	2012.02.08
V&V Edition	1
V&V Disposition and Status	OK
V&V Charge Time	8.226071033299

A.2 Comments