

# V&V Reference Report

## L2 ASCDS Version : 8.4.3

Observation 55542 - L2 Version 2  
Chandra X-Ray Center

L2 Processing Date : Feb 7 2012

## Contents

<b>1</b>	<b>Front</b>	<b>2</b>
<b>2</b>	<b>OBI</b>	<b>3</b>
2.1	OBI . . . . .	3
2.1.1	Images . . . . .	3
2.1.2	Bias . . . . .	3
2.1.3	Parameters . . . . .	4
2.1.4	Events . . . . .	4
2.2	Compared Parameters . . . . .	5
2.3	Star Slots . . . . .	6
2.4	FID Slots . . . . .	6
<b>A</b>	<b>Summary</b>	<b>7</b>
A.1	Status . . . . .	7
A.2	Comments . . . . .	7

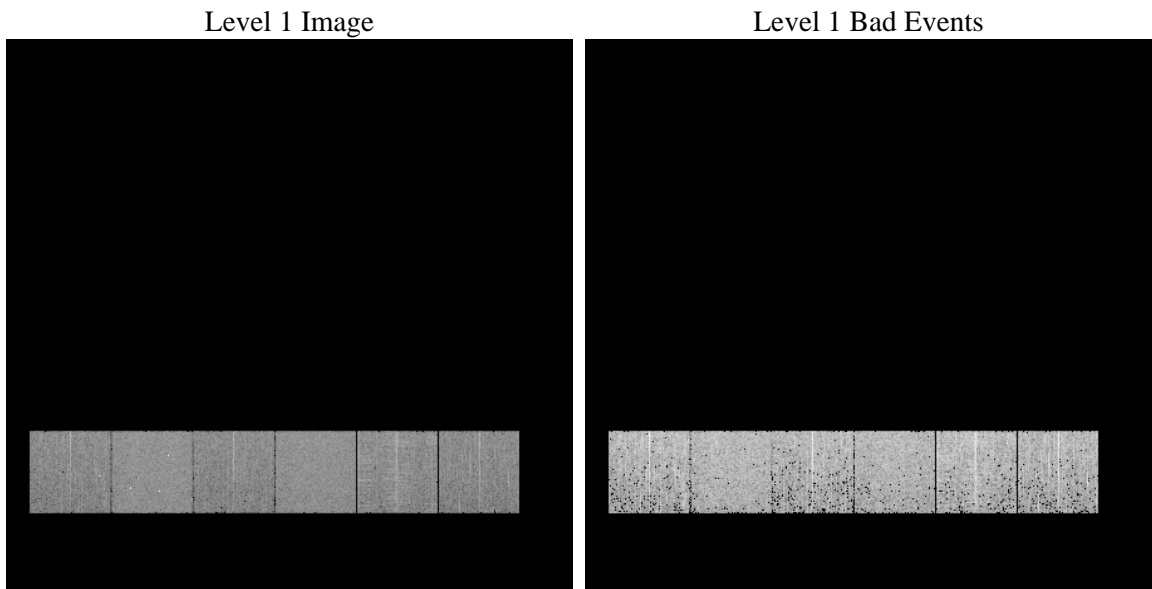
# 1 Front

seq_num	&#160	Sequence number
obs_id	55542	Observation id
title	ACIS-456789 diagnostics	Proposal title
observer	CHANDRA engineering request/realtime commanding	Principal investig
object	&#160	Source name
dtcycle	0	&#160
cycle	P	events from which exps? Prim/Second/Both
ra_targ	0.0	Observer's specified target RA [deg]
dec_targ	0.0	Observer's specified target Dec [deg]
ra_nom	51.996358459138	Nominal RA [deg]
dec_nom	-33.028447010349	Nominal Dec [deg]
roll_nom	230.9518379754	Nominal Roll [deg]
revision	2	Processing version of data
ontime	3285.924893558	Sum of GTIs [s]
livetime	3244.3165340094	Livetime [s]
ontime4	3285.8017735481	Sum of GTIs [s]
ontime5	3285.8838535547	Sum of GTIs [s]
ontime6	3285.8428135514	Sum of GTIs [s]
ontime7	3285.924893558	Sum of GTIs [s]
ontime8	3285.7607335448	Sum of GTIs [s]
ontime9	3285.9659335613	Sum of GTIs [s]
l2events	139422	Number of level 2 events

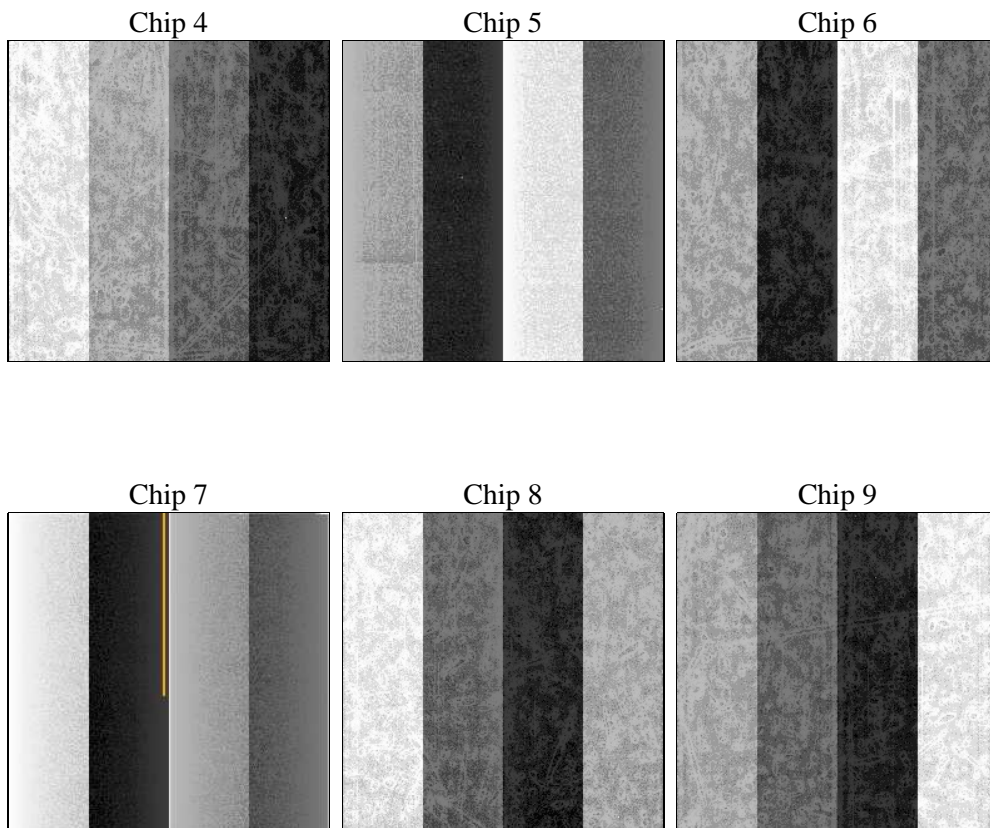
## 2 OBI

### 2.1 OBI

#### 2.1.1 Images



#### 2.1.2 Bias



### 2.1.3 Parameters

obi_num	0	Obi number	sched_exp_time	0.0	[s] Scheduled observation exposure time
ascdsver	8.4.3	Processing system revision	ontime	3285.924893558	Sum of GTIs [s]
caldsver	4.4.7	&#160	ontime4	3285.8017735481	Sum of GTIs [s]
date	2012-02-07T15:23:59	Date and time of file creation	ontime5	3285.8838535547	Sum of GTIs [s]
revision	2	Processing version of data	ontime6	3285.8428135514	Sum of GTIs [s]
			ontime7	3285.924893558	Sum of GTIs [s]
			ontime8	3285.7607335448	Sum of GTIs [s]
			ontime9	3285.9659335613	Sum of GTIs [s]
			l1events	298576	Number of level 1 events

### 2.1.4 Events

	ccd 4	ccd 5	ccd 6	ccd 7	ccd 8	ccd 9		ccd 4	ccd 5	ccd 6	ccd 7	ccd 8	ccd 9
level 1 events	44692	58314	44208	54814	52300	44248	grade 0 events	11705	5482	11109	5629	12102	10817
rejected events	24208	24200	22922	22640	26468	23705		26%	9%	25%	10%	23%	24%
rejected %	54%	41%	51%	41%	50%	53%	grade 1 events	113	97	73	48	76	78
								0%	0%	0%	0%	0%	0%
							grade 2 events	3200	11648	3848	6960	4995	3671
								7%	19%	8%	12%	9%	8%
							grade 3 events	1432	1431	1369	2850	1979	1444
								3%	2%	3%	5%	3%	3%
							grade 4 events	1418	1328	1408	2847	1843	1413
								3%	2%	3%	5%	3%	3%
							grade 5 events	1367	3125	1386	3642	2027	1662
								3%	5%	3%	6%	3%	3%
							grade 6 events	2729	14225	3552	13888	4913	3198
								6%	24%	8%	25%	9%	7%
							grade 7 events	22728	20978	21463	18950	24365	21965
								50%	35%	48%	34%	46%	49%

## 2.2 Compared Parameters

Parameter	Planned	Actual	Parameter	Planned	Actual
Instrument	ACIS	ACIS	Obspar format version number	7	7
Detector	ACIS-456789	ACIS-456789	Obspar file type	PREDICTED	ACTUAL
Grating	NONE	NONE	Obspar update status	NONE	UPDATED
Data mode	FAINT	FAINT	Number of optional ACIS chips dropped	0	0
Observation mode	SECONDARY	SECONDARY	On-chip summing requested	N	N
[deg] Pointing RA	0	51.99635845913843	Subarray requested	NONE	NONE
[deg] Pointing Dec	0	-33.02844701034854	Alternating exposures requested	N	N
[deg] Pointing Roll	0.0	230.9518379754026	[s] Primary exposure time	3.2	3.2
[mm] SIM focus pos	-1.429586	-1.428180813131781			
[mm] SIM defocus	0.1037507710433287	0.1051558262725154			
[mm] SIM translation stage pos	250.455976	250.4635187648994			
[mm] SIM translation stage offset	0	-0.007540371344731511			
[s] Observation start time (MET)	418325382.579181	418325381.55419			
Observation start date	2011-04-04T17:29:43	2011-04-04T17:29:41			
[s] Observation end time (MET)	418332219.329535	418332218.30455			
Observation end date	2011-04-04T19:23:39	2011-04-04T19:23:38			
Read mode	TIMED	TIMED			

## **2.3 Star Slots**

## **2.4 FID Slots**

## A Summary

### A.1 Status

V&V Scientist	Beth Sundheim
V&V Date (YYYY-MM-DD)	2012.02.10
V&V Edition	1
V&V Disposition and Status	OK
V&V Charge Time	3.285924893558

### A.2 Comments