

# V&V Reference Report

## L2 ASCDS Version : 8.4.3

Observation 55472 - L2 Version 2  
Chandra X-Ray Center

L2 Processing Date : Feb 8 2012

## Contents

<b>1</b>	<b>Front</b>	<b>2</b>
<b>2</b>	<b>OBI</b>	<b>3</b>
2.1	OBI . . . . .	3
2.1.1	Images . . . . .	3
2.1.2	Bias . . . . .	3
2.1.3	Parameters . . . . .	4
2.1.4	Events . . . . .	4
2.2	Compared Parameters . . . . .	5
2.3	Star Slots . . . . .	6
2.4	FID Slots . . . . .	6
<b>A</b>	<b>Summary</b>	<b>7</b>
A.1	Status . . . . .	7
A.2	Comments . . . . .	7

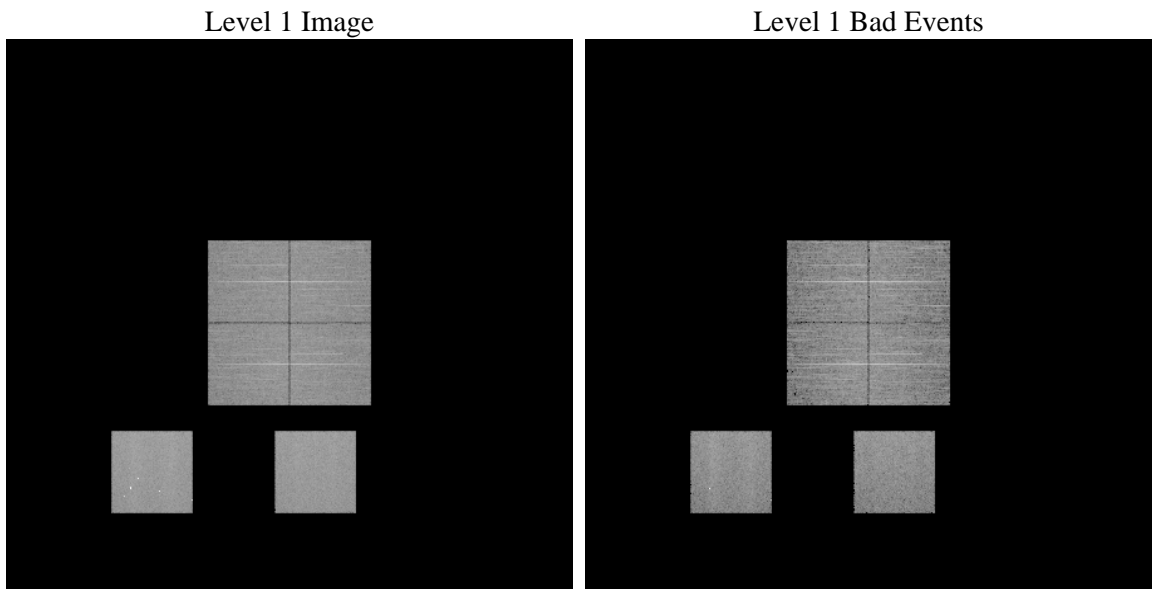
# 1 Front

seq_num	&#160	Sequence number
obs_id	55472	Observation id
title	ACIS-012357 diagnostics	Proposal title
observer	CHANDRA engineering request/realtime commanding	Principal investig
object	&#160	Source name
dtcycle	0	&#160
cycle	P	events from which exps? Prim/Second/Both
ra_targ	0.0	Observer's specified target RA [deg]
dec_targ	0.0	Observer's specified target Dec [deg]
ra_nom	201.07212590962	Nominal RA [deg]
dec_nom	30.335494531984	Nominal Dec [deg]
roll_nom	199.63010587902	Nominal Roll [deg]
revision	2	Processing version of data
ontime	8281.5999692082	Sum of GTIs [s]
livetime	8176.7333638173	Livetime [s]
ontime0	8281.5999692082	Sum of GTIs [s]
ontime1	8281.5999692082	Sum of GTIs [s]
ontime2	8281.5999692082	Sum of GTIs [s]
ontime3	8281.5999692082	Sum of GTIs [s]
ontime5	8281.5999692082	Sum of GTIs [s]
ontime7	8281.5999692082	Sum of GTIs [s]
l2events	341293	Number of level 2 events

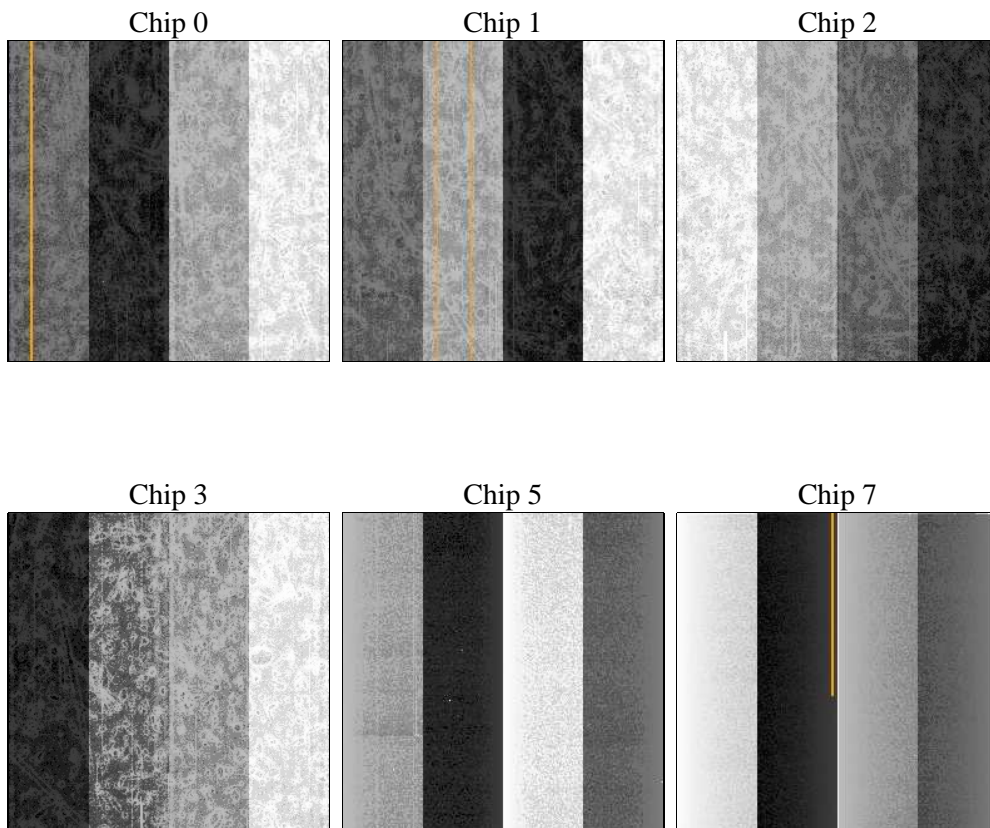
## 2 OBI

### 2.1 OBI

#### 2.1.1 Images



#### 2.1.2 Bias



### 2.1.3 Parameters

obi_num	0	Obi number	sched_exp_time	0.0	[s] Scheduled observation exposure time
ascdsver	8.4.3	Processing system revision	ontime	8281.5999692082	Sum of GTIs [s]
caldsver	4.4.7	&#160	ontime0	8281.5999692082	Sum of GTIs [s]
date	2012-02-09T01:02:39	Date and time of file creation	ontime1	8281.5999692082	Sum of GTIs [s]
revision	2	Processing version of data	ontime2	8281.5999692082	Sum of GTIs [s]
			ontime3	8281.5999692082	Sum of GTIs [s]
			ontime5	8281.5999692082	Sum of GTIs [s]
			ontime7	8281.5999692082	Sum of GTIs [s]
			l1events	715994	Number of level 1 events

### 2.1.4 Events

	ccd 0	ccd 1	ccd 2	ccd 3	ccd 5	ccd 7		ccd 0	ccd 1	ccd 2	ccd 3	ccd 5	ccd 7
level 1 events	105298	107515	107205	109102	148127	138747	grade 0 events	25458	23677	26651	26647	9921	12432
rejected events	55655	57531	58276	59304	63727	59788		24%	22%	24%	24%	6%	8%
rejected %	52%	53%	54%	54%	43%	43%	grade 1 events	132	121	168	162	281	87
								0%	0%	0%	0%	0%	0%
							grade 2 events	9709	11734	8301	8835	30996	17624
								9%	10%	7%	8%	20%	12%
							grade 3 events	3195	3009	3355	3382	2866	6616
								3%	2%	3%	3%	1%	4%
							grade 4 events	3307	3070	3371	3405	2562	6287
								3%	2%	3%	3%	1%	4%
							grade 5 events	3167	3194	3130	3548	7153	8380
								3%	2%	2%	3%	4%	6%
							grade 6 events	7993	8514	7268	7541	38084	36033
								7%	7%	6%	6%	25%	25%
							grade 7 events	52337	54196	54961	55582	56264	51288
								49%	50%	51%	50%	37%	36%

## 2.2 Compared Parameters

Parameter	Planned	Actual	Parameter	Planned	Actual
Instrument	ACIS	ACIS	Obspar format version number	7	7
Detector	ACIS-012357	ACIS-012357	Obspar file type	PREDICTED	ACTUAL
Grating	NONE	NONE	Obspar update status	NONE	UPDATED
Data mode	FAINT	FAINT	Number of optional ACIS chips dropped	0	0
Observation mode	SECONDARY	SECONDARY	On-chip summing requested	N	N
[deg] Pointing RA	0	201.0721259096229	Subarray requested	NONE	NONE
[deg] Pointing Dec	0	30.33549453198387	Alternating exposures requested	N	N
[deg] Pointing Roll	0.0	199.6301058790196	[s] Primary exposure time	3.2	3.2
[mm] SIM focus pos	-1.429586	-1.428180813131781			
[mm] SIM defocus	0.1037507710433287	0.1051558262725154			
[mm] SIM translation stage pos	250.455976	250.466033080201			
[mm] SIM translation stage offset	0	-0.01005468664627074			
[s] Observation start time (MET)	420409576.687332	420409575.66234			
Observation start date	2011-04-28T20:26:17	2011-04-28T20:26:15			
[s] Observation end time (MET)	420419576.587851	420419575.56286			
Observation end date	2011-04-28T23:12:57	2011-04-28T23:12:55			
Read mode	TIMED	TIMED			

## **2.3 Star Slots**

## **2.4 FID Slots**

## A Summary

### A.1 Status

V&V Scientist	Jen Lauer
V&V Date (YYYY-MM-DD)	2012.02.10
V&V Edition	1
V&V Disposition and Status	OK
V&V Charge Time	8.2815999692082

### A.2 Comments