

# V&V Reference Report

## L2 ASCDS Version : 8.4.3

Observation 55152 - L2 Version 2  
Chandra X-Ray Center

L2 Processing Date : Feb 24 2012

## Contents

<b>1</b>	<b>Front</b>	<b>2</b>
<b>2</b>	<b>OBI</b>	<b>3</b>
2.1	OBI . . . . .	3
2.1.1	Images . . . . .	3
2.1.2	Bias . . . . .	3
2.1.3	Parameters . . . . .	4
2.1.4	Events . . . . .	4
2.2	Compared Parameters . . . . .	5
2.3	Star Slots . . . . .	6
2.4	FID Slots . . . . .	6
<b>A</b>	<b>Summary</b>	<b>7</b>
A.1	Status . . . . .	7
A.2	Comments . . . . .	7

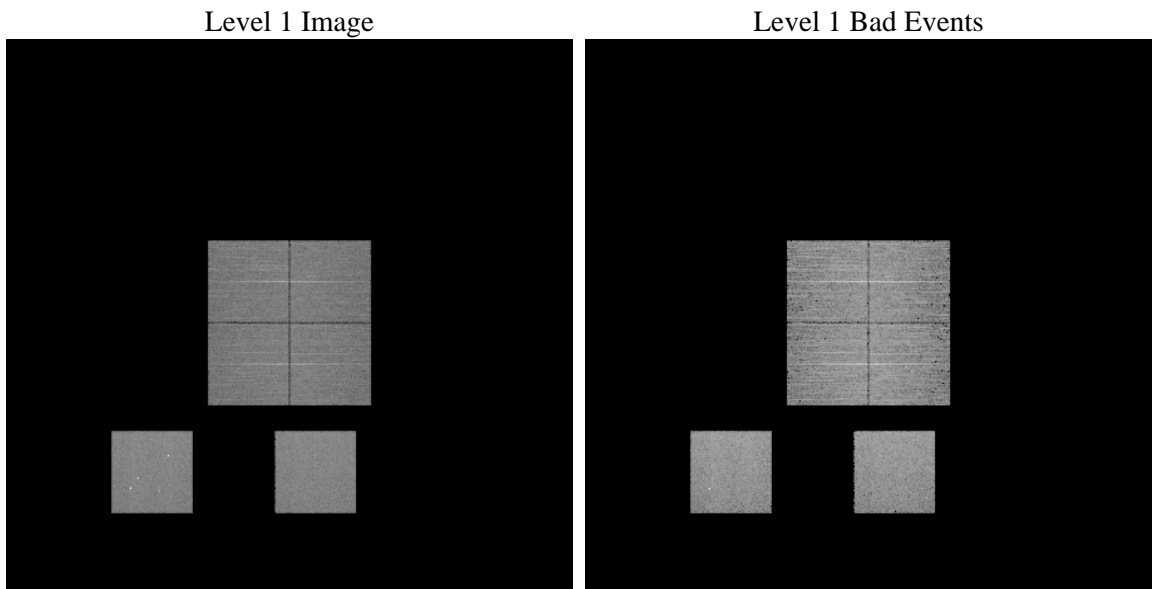
# 1 Front

seq_num	&#160	Sequence number
obs_id	55152	Observation id
title	ACIS-012357 diagnostics	Proposal title
observer	CHANDRA engineering request/realtime commanding	Principal investig
object	&#160	Source name
dtcycle	0	&#160
cycle	P	events from which exps? Prim/Second/Both
ra_targ	0.0	Observer's specified target RA [deg]
dec_targ	0.0	Observer's specified target Dec [deg]
ra_nom	353.02956028675	Nominal RA [deg]
dec_nom	-18.000929648589	Nominal Dec [deg]
roll_nom	325.22200640253	Nominal Roll [deg]
revision	2	Processing version of data
ontime	8287.3766349554	Sum of GTIs [s]
livetime	8182.4368819445	Livetime [s]
ontime0	8287.3766349554	Sum of GTIs [s]
ontime1	8287.3766349554	Sum of GTIs [s]
ontime2	8290.074138999	Sum of GTIs [s]
ontime3	8284.1355646849	Sum of GTIs [s]
ontime5	8290.0330989957	Sum of GTIs [s]
ontime7	8287.3766349554	Sum of GTIs [s]
l2events	313537	Number of level 2 events

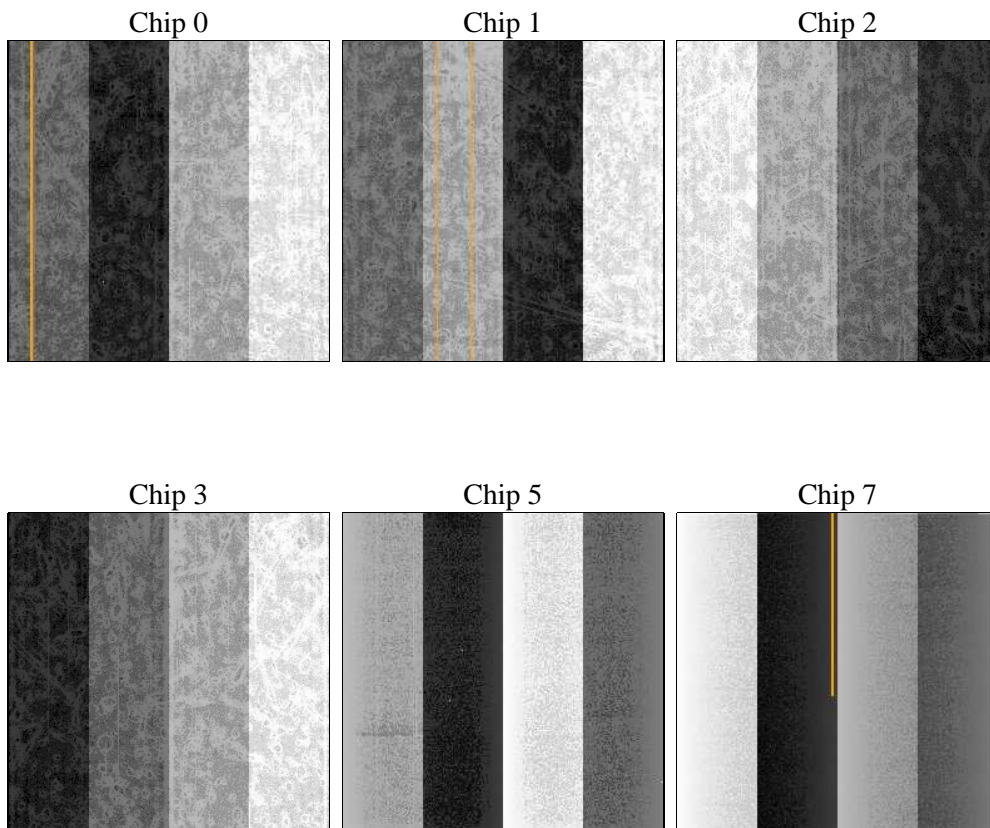
## 2 OBI

### 2.1 OBI

#### 2.1.1 Images



#### 2.1.2 Bias



### 2.1.3 Parameters

obi_num	0	Obi number	sched_exp_time	0.0	[s] Scheduled observation exposure time
ascdsver	8.4.3	Processing system revision	ontime	8287.3766349554	Sum of GTIs [s]
caldsver	4.4.8	&#160	ontime0	8287.3766349554	Sum of GTIs [s]
date	2012-02-24T04:26:01	Date and time of file creation	ontime1	8287.3766349554	Sum of GTIs [s]
revision	2	Processing version of data	ontime2	8290.074138999	Sum of GTIs [s]
			ontime3	8284.1355646849	Sum of GTIs [s]
			ontime5	8290.0330989957	Sum of GTIs [s]
			ontime7	8287.3766349554	Sum of GTIs [s]
			l1events	643175	Number of level 1 events

### 2.1.4 Events

	ccd 0	ccd 1	ccd 2	ccd 3	ccd 5	ccd 7		ccd 0	ccd 1	ccd 2	ccd 3	ccd 5	ccd 7
level 1 events	95337	93698	96715	97602	132705	127118	grade 0 events	24218	23410	24842	24869	11801	12188
rejected events	49277	47537	50491	51459	55204	55080		25%	24%	25%	25%	8%	9%
rejected %	51%	50%	52%	52%	41%	43%	grade 1 events	136	93	120	144	751	86
								0%	0%	0%	0%	0%	0%
							grade 2 events	8473	9380	8059	8006	27796	15908
								8%	10%	8%	8%	20%	12%
							grade 3 events	3138	2861	3207	3262	2748	6378
								3%	3%	3%	3%	2%	5%
							grade 4 events	3022	2972	3184	3114	2684	6295
								3%	3%	3%	3%	2%	4%
							grade 5 events	3188	3127	3014	3414	6544	8312
								3%	3%	3%	3%	4%	6%
							grade 6 events	7209	7538	6932	6892	32472	31269
								7%	8%	7%	7%	24%	24%
							grade 7 events	45953	44317	47357	47901	47909	46682
								48%	47%	48%	49%	36%	36%

## 2.2 Compared Parameters

Parameter	Planned	Actual
Instrument	ACIS	ACIS
Detector	ACIS-012357	ACIS-012357
Grating	NONE	NONE
Data mode	FAINT	FAINT
Observation mode	SECONDARY	SECONDARY
[deg] Pointing RA	0	353.0295602867472
[deg] Pointing Dec	0	-18.00092964858933
[deg] Pointing Roll	0.0	325.2220064025275
[mm] SIM focus pos	-1.429586	-1.428180813131781
[mm] SIM defocus	0.1037507710433287	0.1051558262725154
[mm] SIM translation stage pos	250.455976	250.466033080201
[mm] SIM translation stage offset	0	-0.01005468664627074
[s] Observation start time (MET)	433857205.967191	433857204.9422
Observation start date	2011-10-01T11:53:26	2011-10-01T11:53:24
[s] Observation end time (MET)	433873628.518052	433873627.49306
Observation end date	2011-10-01T16:27:09	2011-10-01T16:27:07
Read mode	TIMED	TIMED

Parameter	Planned	Actual
Obspar format version number	7	7
Obspar file type	PREDICTED	ACTUAL
Obspar update status	NONE	UPDATED
Number of optional ACIS chips dropped	0	0
On-chip summing requested	N	N
Subarray requested	NONE	NONE
Alternating exposures requested	N	N
[s] Primary exposure time	3.2	3.2

## 2.3 Star Slots

## 2.4 FID Slots

## A Summary

### A.1 Status

V&V Scientist	Jen Lauer
V&V Date (YYYY-MM-DD)	2012.02.24
V&V Edition	1
V&V Disposition and Status	OK
V&V Charge Time	8.2873766349554

### A.2 Comments