

V&V Reference Report

L2 ASCDS Version : 8.5.1.1

Observation 5472 - L2 Version 3
Chandra X-Ray Center

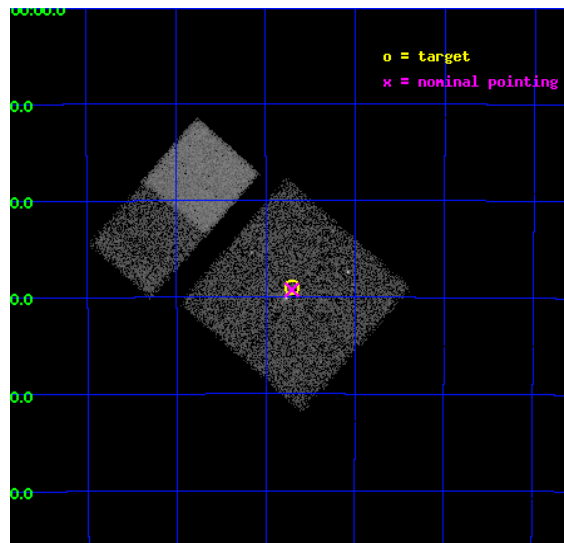
L2 Processing Date : Dec 25 2012

Contents

| | | |
|----------|-------------------------------|-----------|
| 1 | Front | 2 |
| 2 | OBI | 3 |
| 2.1 | OBI | 3 |
| 2.1.1 | Images | 3 |
| 2.1.2 | Bias | 3 |
| 2.1.3 | Parameters | 4 |
| 2.1.4 | Events | 4 |
| 2.2 | Compared Parameters | 5 |
| 2.3 | Aspect | 6 |
| 2.4 | Star Slots | 9 |
| 2.4.1 | Slot 3 | 9 |
| 2.4.2 | Slot 4 | 10 |
| 2.4.3 | Slot 5 | 11 |
| 2.4.4 | Slot 6 | 12 |
| 2.4.5 | Slot 7 | 13 |
| 2.5 | FID Slots | 14 |
| 2.5.1 | Slot 0 | 14 |
| 2.5.2 | Slot 1 | 15 |
| 2.5.3 | Slot 2 | 16 |
| A | Summary | 17 |
| A.1 | Status | 17 |
| A.2 | Comments | 17 |

1 Front

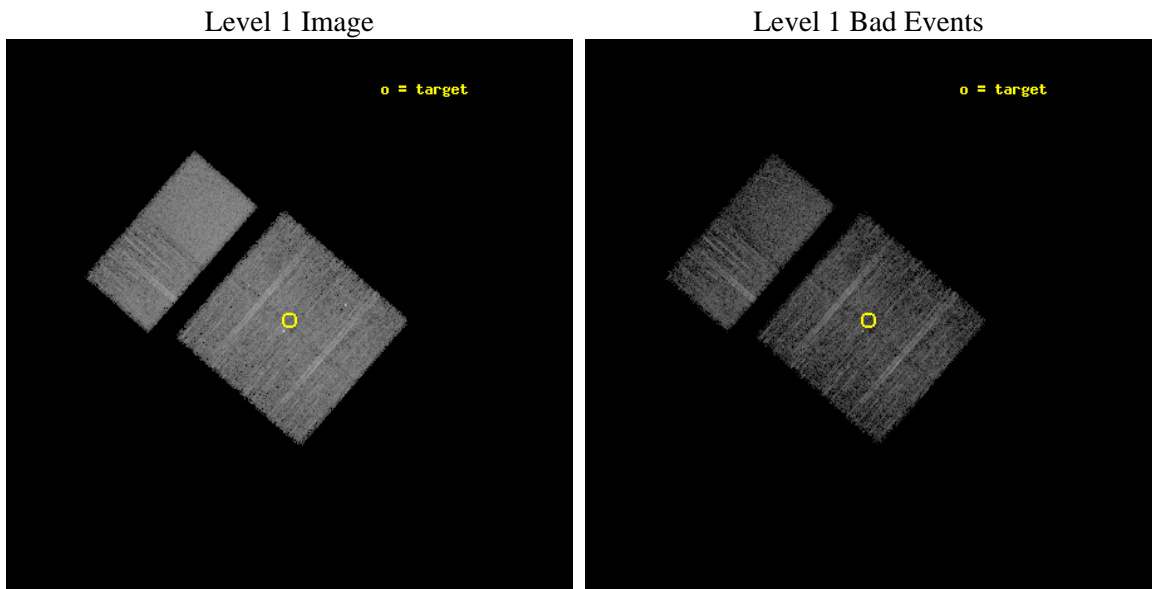
| | | |
|----------|---|---|
| seq_num | 400402 | Sequence number |
| obs_id | 5472 | Observation id |
| title | Localization of INTEGRAL-Selected Sources in the Norma Region | Prop |
| observer | Dr. John Tomsick | Principal investigator |
| object | IGR J16207-5129 | Source name |
| dtcycle | 0 | |
| cycle | P | events from which exps? Prim/Second/Both |
| ra_targ | 245.175 | Observer's specified target RA [deg] |
| dec_targ | -51.483333 | Observer's specified target Dec [deg] |
| ra_nom | 245.17668800679 | Nominal RA [deg] |
| dec_nom | -51.487578187815 | Nominal Dec [deg] |
| roll_nom | 311.12257902457 | Nominal Roll [deg] |
| revision | 3 | Processing version of data |
| ontime | 5174.3999807239 | Sum of GTIs [s] |
| livetime | 5108.8786125183 | Livetime [s] |
| ontime0 | 5174.3999807239 | Sum of GTIs [s] |
| ontime1 | 5174.3999807239 | Sum of GTIs [s] |
| ontime2 | 5174.3999807239 | Sum of GTIs [s] |
| ontime3 | 5174.3999807239 | Sum of GTIs [s] |
| ontime6 | 5174.3999807239 | Sum of GTIs [s] |
| ontime7 | 5174.3999807239 | Sum of GTIs [s] |
| l2events | 47442 | Number of level 2 events |



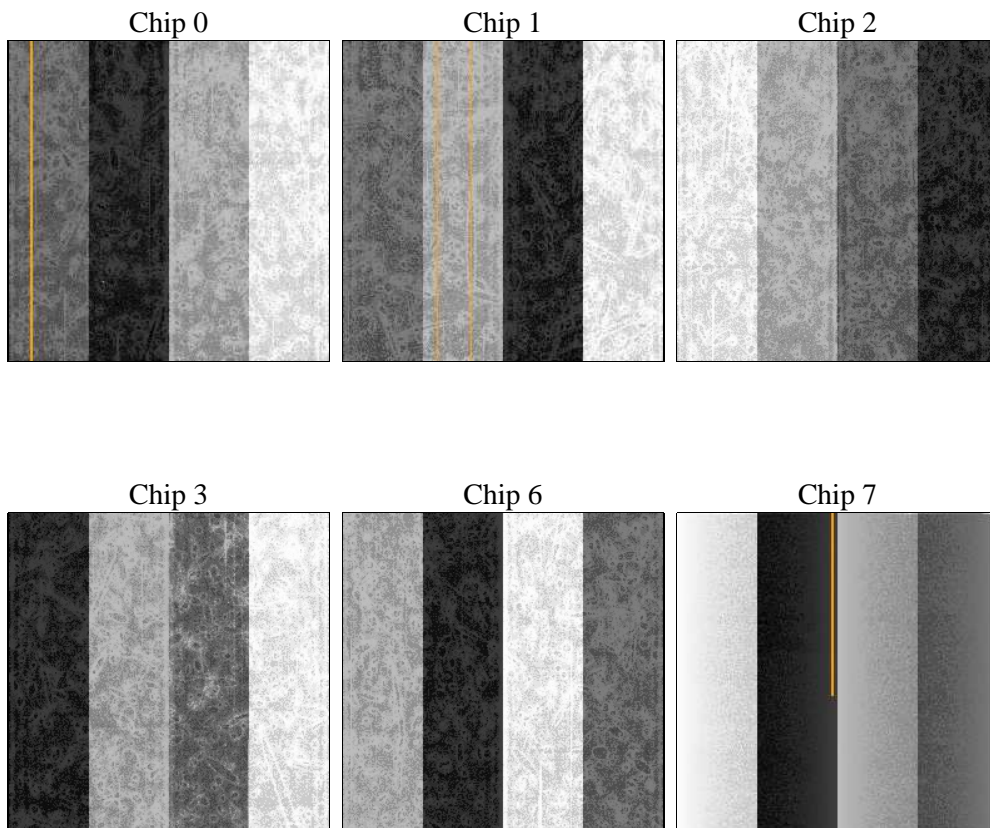
2 OBI

2.1 OBI

2.1.1 Images



2.1.2 Bias



2.1.3 Parameters

| | | | | | |
|----------|---------------------|--------------------------------|----------------|-----------------|---|
| obi_num | 2 | Obi number | sched_exp_time | 5000.000000 | [s] Scheduled observation exposure time |
| ascdsver | 8.5.1.1 | Processing system revision | ontime | 5174.3999807239 | Sum of GTIs [s] |
| caldsver | 4.5.5 | | ontime0 | 5174.3999807239 | Sum of GTIs [s] |
| date | 2012-12-25T05:56:26 | Date and time of file creation | ontime1 | 5174.3999807239 | Sum of GTIs [s] |
| revision | 3 | Processing version of data | ontime2 | 5174.3999807239 | Sum of GTIs [s] |
| | | | ontime3 | 5174.3999807239 | Sum of GTIs [s] |
| | | | ontime6 | 5174.3999807239 | Sum of GTIs [s] |
| | | | ontime7 | 5174.3999807239 | Sum of GTIs [s] |
| | | | l1events | 283608 | Number of level 1 events |

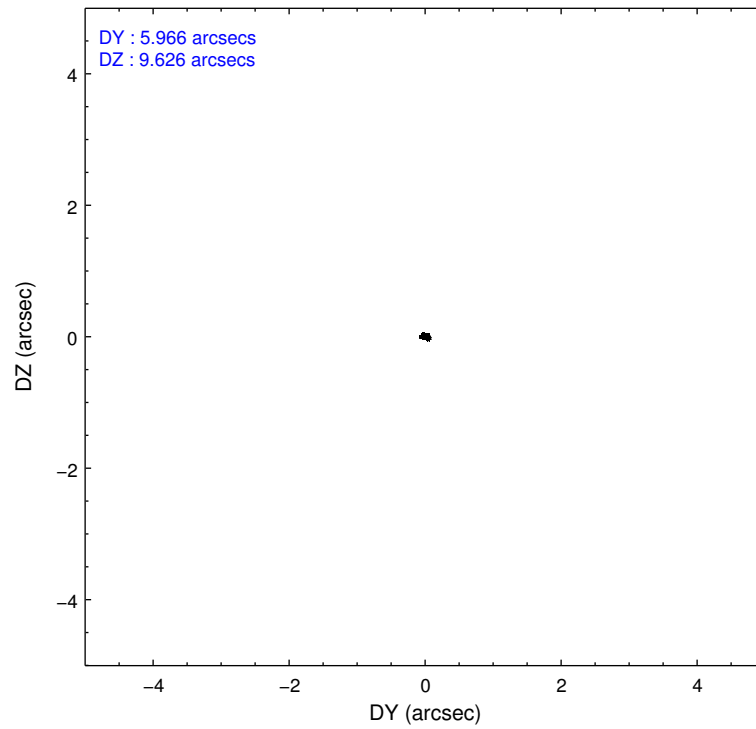
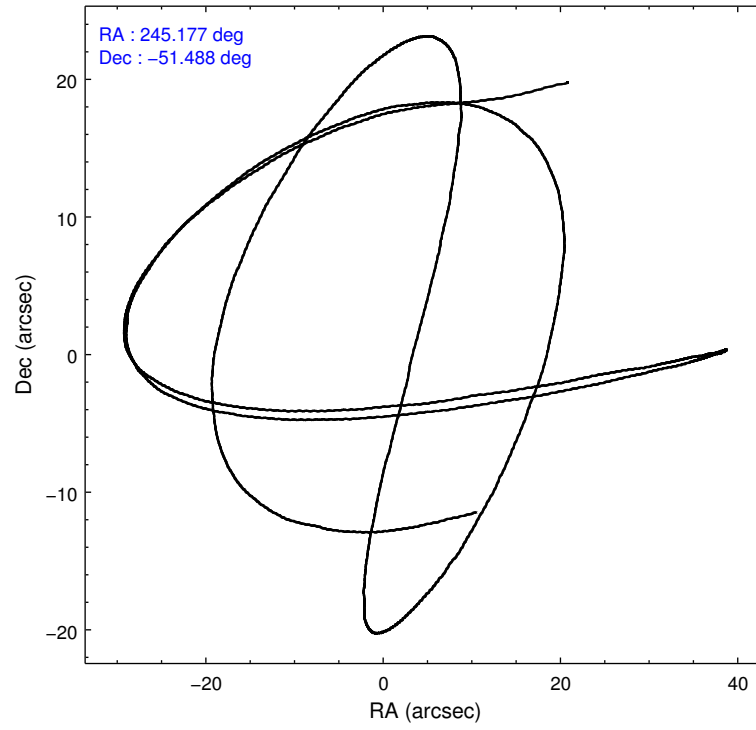
2.1.4 Events

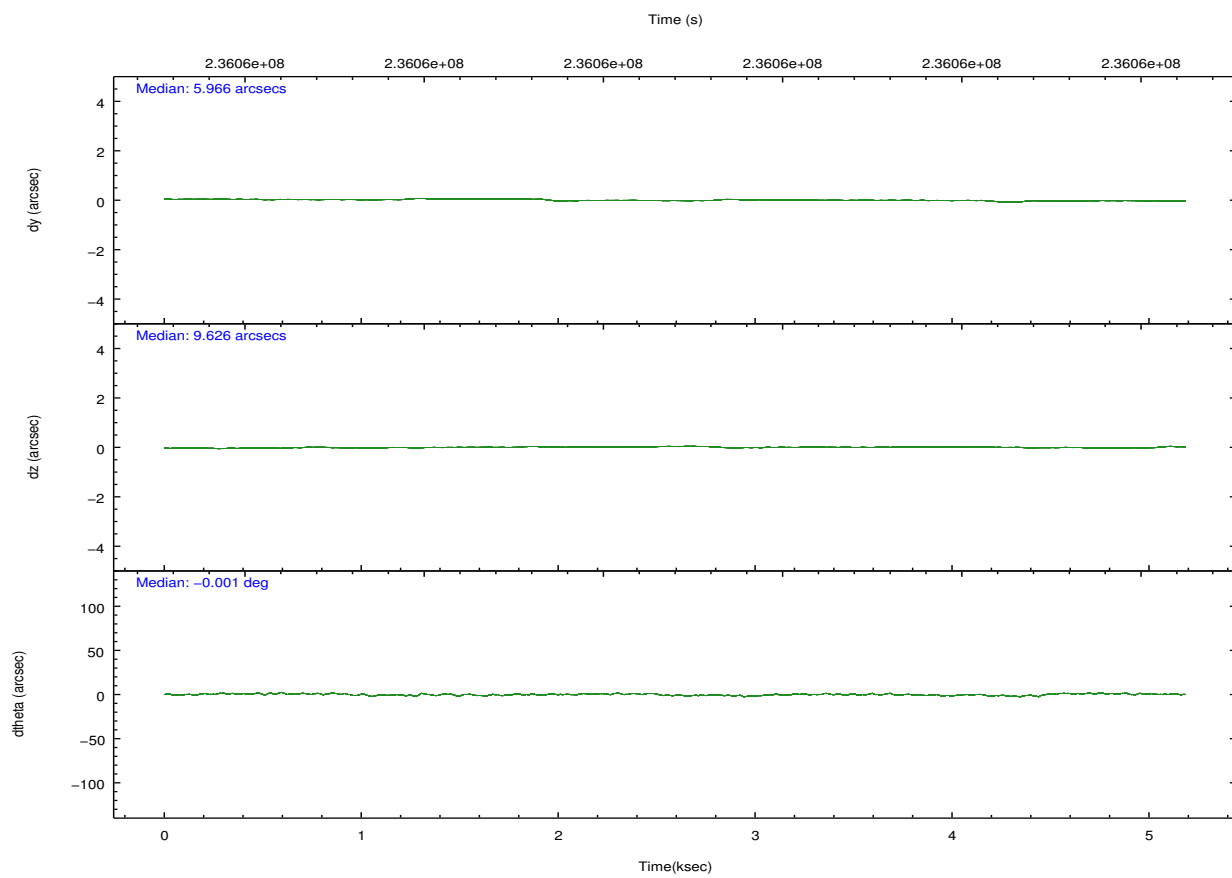
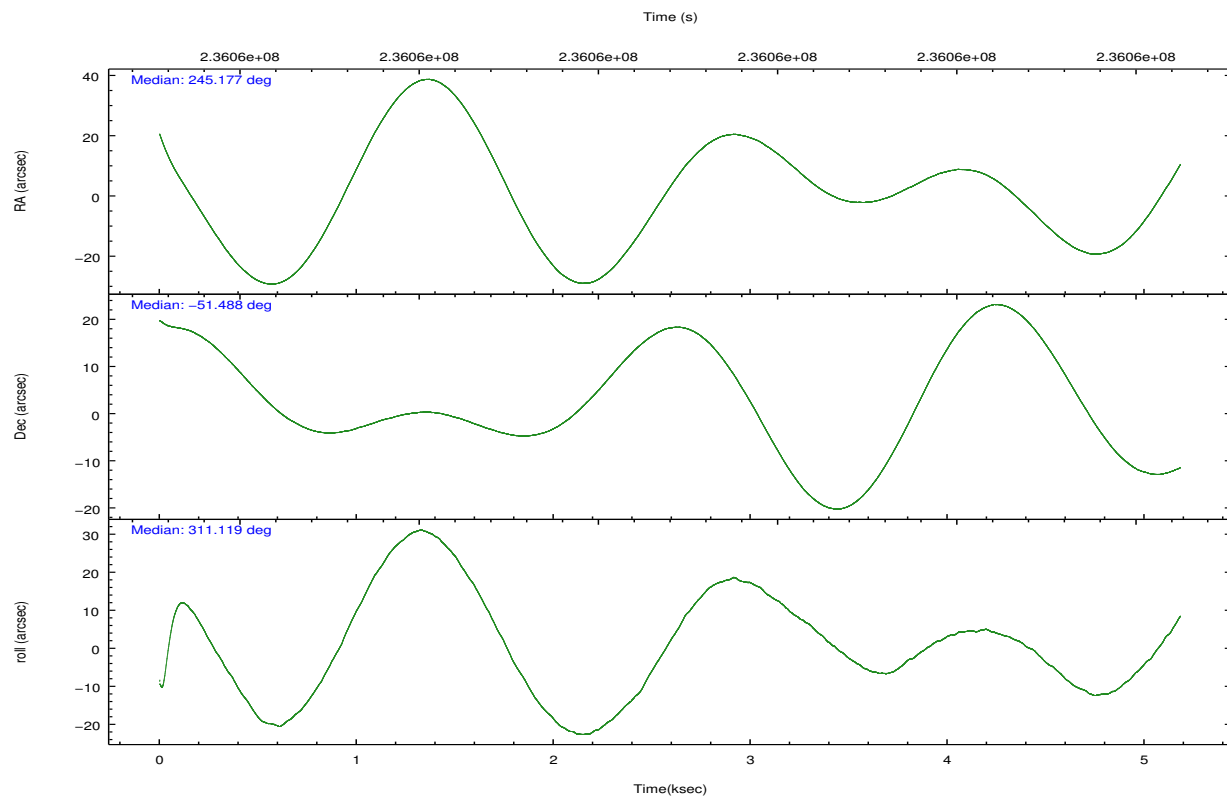
| | ccd 0 | ccd 1 | ccd 2 | ccd 3 | ccd 6 | ccd 7 | | ccd 0 | ccd 1 | ccd 2 | ccd 3 | ccd 6 | ccd 7 |
|-----------------|-------|-------|-------|-------|-------|-------|----------------|-------|-------|-------|-------|-------|-------|
| level 1 events | 42870 | 44215 | 46264 | 42473 | 47641 | 60145 | grade 0 events | 3132 | 3089 | 3651 | 2684 | 2595 | 2306 |
| rejected events | 37259 | 38145 | 39497 | 37370 | 42261 | 37674 | | 7% | 6% | 7% | 6% | 5% | 3% |
| rejected % | 86% | 86% | 85% | 87% | 88% | 62% | grade 1 events | 23 | 23 | 148 | 26 | 24 | 47 |
| | | | | | | | | 0% | 0% | 0% | 0% | 0% | 0% |
| | | | | | | | grade 2 events | 1226 | 1441 | 1331 | 1026 | 1244 | 4968 |
| | | | | | | | | 2% | 3% | 2% | 2% | 2% | 8% |
| | | | | | | | grade 3 events | 511 | 592 | 615 | 545 | 500 | 2187 |
| | | | | | | | | 1% | 1% | 1% | 1% | 1% | 3% |
| | | | | | | | grade 4 events | 506 | 559 | 609 | 492 | 483 | 2088 |
| | | | | | | | | 1% | 1% | 1% | 1% | 1% | 3% |
| | | | | | | | grade 5 events | 1780 | 1871 | 1846 | 2018 | 2049 | 5608 |
| | | | | | | | | 4% | 4% | 3% | 4% | 4% | 9% |
| | | | | | | | grade 6 events | 939 | 1149 | 1106 | 863 | 1100 | 13296 |
| | | | | | | | | 2% | 2% | 2% | 2% | 2% | 22% |
| | | | | | | | grade 7 events | 34753 | 35491 | 36958 | 34819 | 39646 | 29645 |
| | | | | | | | | 81% | 80% | 79% | 81% | 83% | 49% |

2.2 Compared Parameters

| Parameter | Planned | Actual | Parameter | Planned | Actual |
|-----------------------------------|---------------------|-----------------------|---------------------------------------|-----------|---------|
| Instrument | ACIS | ACIS | Obspar format version number | 7 | 7 |
| Detector | ACIS-012367 | ACIS-012367 | Obspar file type | PREDICTED | ACTUAL |
| Grating | NONE | NONE | Obspar update status | NONE | UPDATED |
| Data mode | FAINT | FAINT | Number of optional ACIS chips dropped | 0 | 0 |
| Observation mode | POINTING | POINTING | On-chip summing requested | N | N |
| [deg] Pointing RA | 245.135655 | 245.1766880067908 | Subarray requested | NONE | NONE |
| [deg] Pointing Dec | -51.478971 | -51.48757818781529 | Alternating exposures requested | N | N |
| [deg] Pointing Roll | 310.881866 | 311.1225790245691 | [s] Primary exposure time | 0.000000 | 3.2 |
| [mm] SIM focus pos | -0.782348 | -0.7809083437167272 | | | |
| [mm] SIM defocus | 0 | 0.001439871863259334 | | | |
| [mm] SIM translation stage pos | -233.592463 | -233.5874344608287 | | | |
| [mm] SIM translation stage offset | 0 | -0.005018542100998502 | | | |
| [s] Observation start time (MET) | 236057993.184000 | 236056654.38631 | | | |
| Observation start date | 2005-06-25T03:38:49 | 2005-06-25T03:17:34 | | | |
| [s] Observation end time (MET) | 236062993.184000 | 236064059.49915 | | | |
| Observation end date | 2005-06-25T05:02:09 | 2005-06-25T05:20:59 | | | |
| Read mode | TIMED | TIMED | | | |

2.3 Aspect



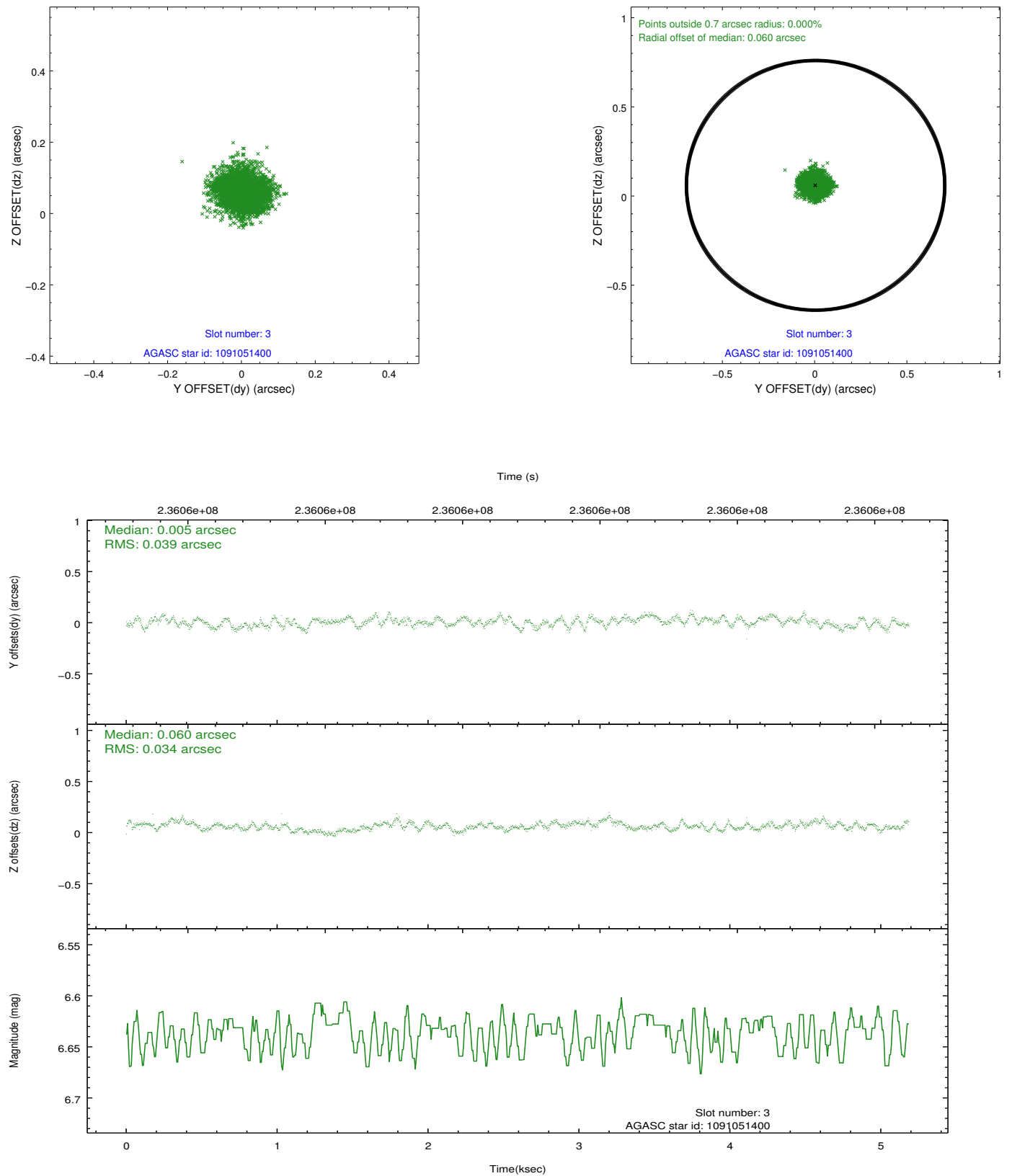


Slot Statistics

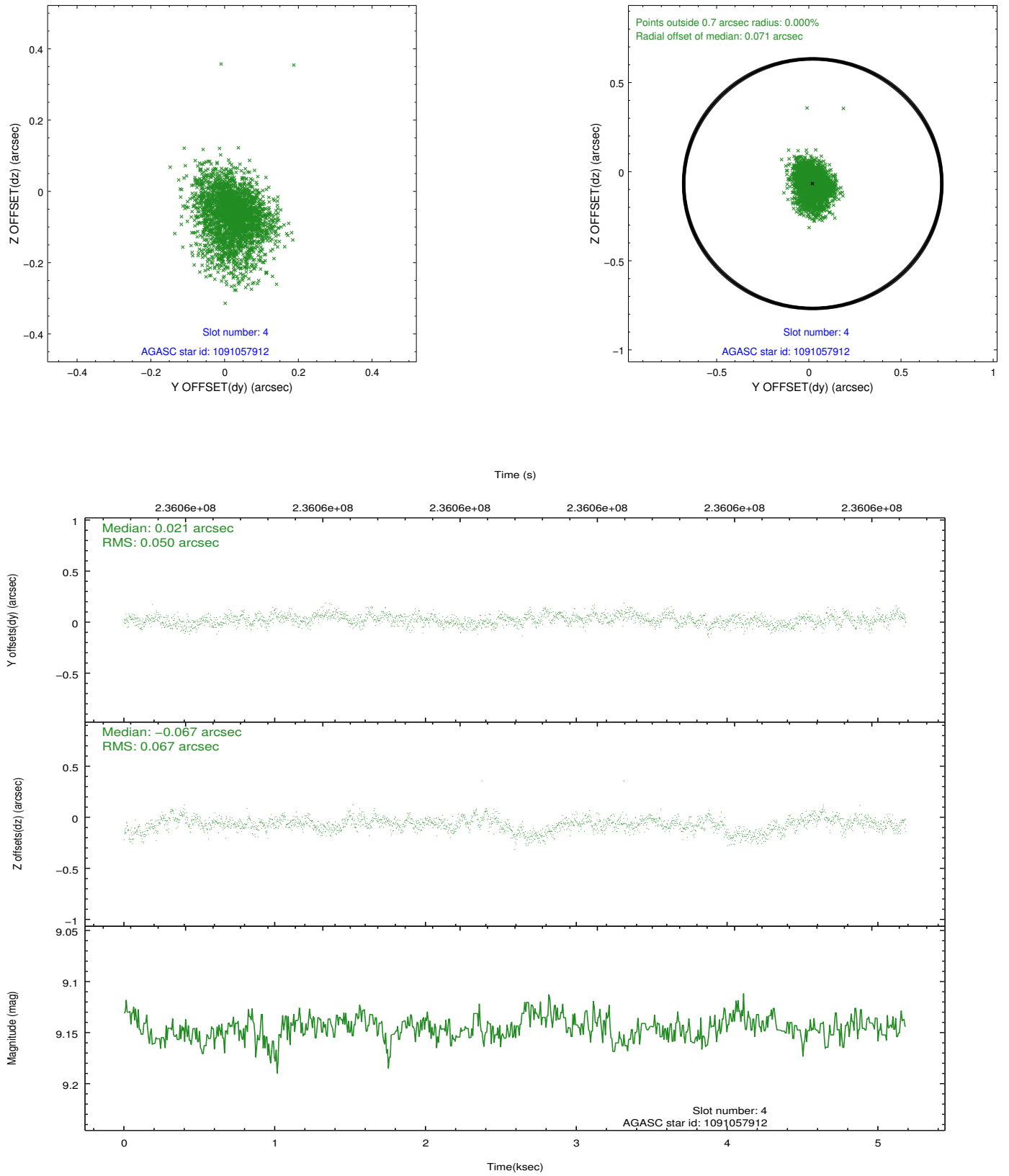
| slot | status | id | mag | n_pts | med_dy | med_dz | dr1 | dr2 | ra | dec | mean_y | mean_z |
|------|--------|------------|------|-------|--------|--------|-------|-------|------------|------------|----------|---------|
| 0 | FID | ACIS-I-1 | 7.25 | 1265 | -0.048 | 0.027 | 0.008 | 0.015 | 0.000000 | 0.000000 | 933.67 | -833.08 |
| 1 | FID | ACIS-I-4 | 7.19 | 1265 | 0.011 | 0.030 | 0.010 | 0.016 | 0.000000 | 0.000000 | 2154.47 | 1066.11 |
| 2 | FID | ACIS-I-6 | 7.25 | 1265 | -0.060 | 0.008 | 0.011 | 0.019 | 0.000000 | 0.000000 | 401.14 | 1709.65 |
| 3 | GUIDE | 1091051400 | 6.63 | 2530 | 0.005 | 0.060 | 0.057 | 0.087 | 245.403808 | -51.751071 | 1134.34 | -189.44 |
| 4 | GUIDE | 1091057912 | 9.15 | 2528 | 0.021 | -0.067 | 0.086 | 0.148 | 245.642757 | -51.112070 | -243.63 | 1728.92 |
| 5 | GUIDE | 1091059112 | 9.07 | 2524 | 0.023 | 0.050 | 0.081 | 0.129 | 245.180420 | -50.736664 | -1952.37 | 1827.51 |
| 6 | GUIDE | 1091061088 | 9.36 | 2530 | 0.029 | -0.004 | 0.109 | 0.176 | 244.721043 | -51.407800 | -800.28 | -536.55 |
| 7 | GUIDE | 1091077632 | 8.24 | 2529 | -0.079 | -0.036 | 0.067 | 0.115 | 246.332364 | -51.536413 | 1927.80 | 1877.03 |

2.4 Star Slots

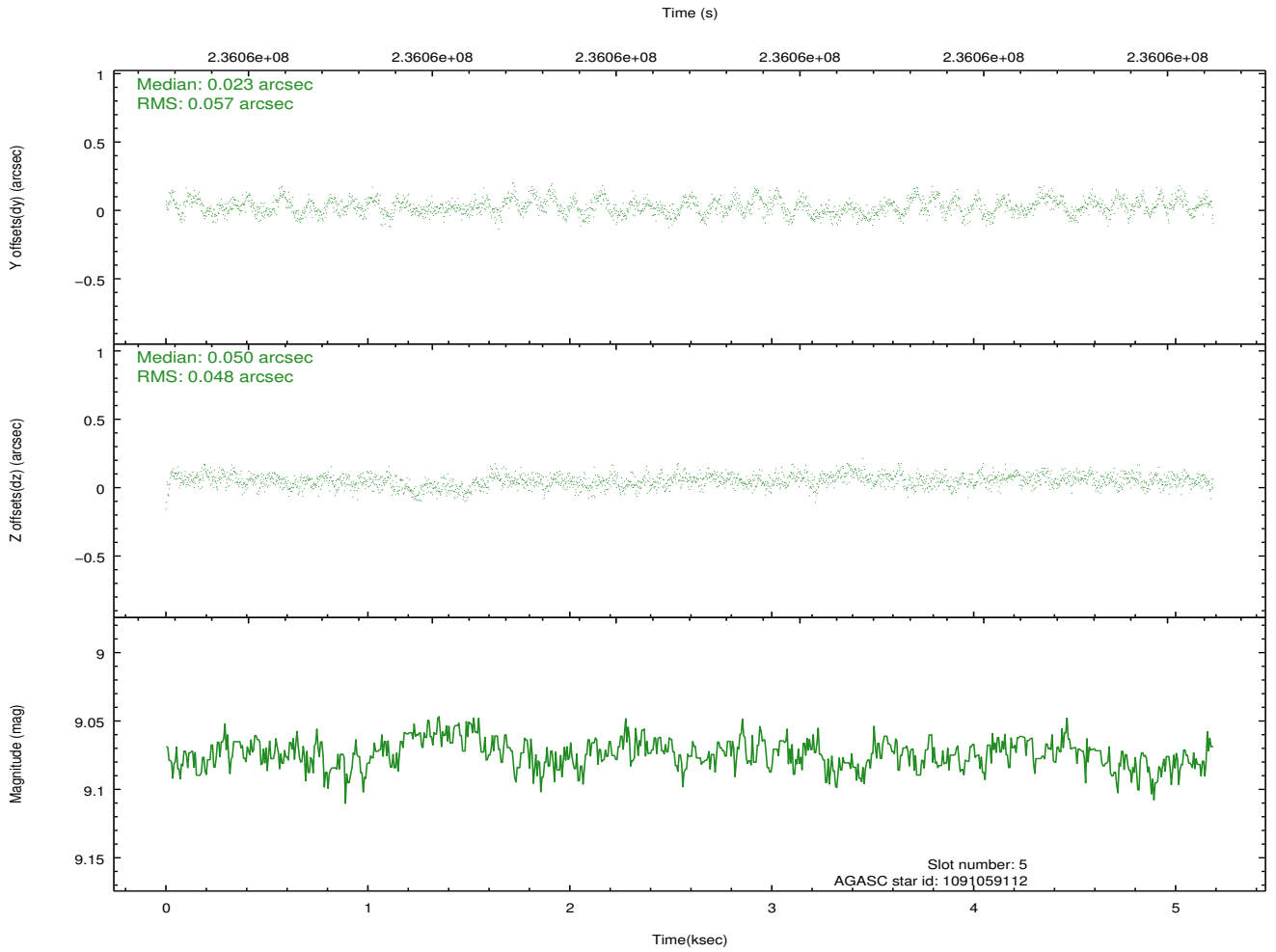
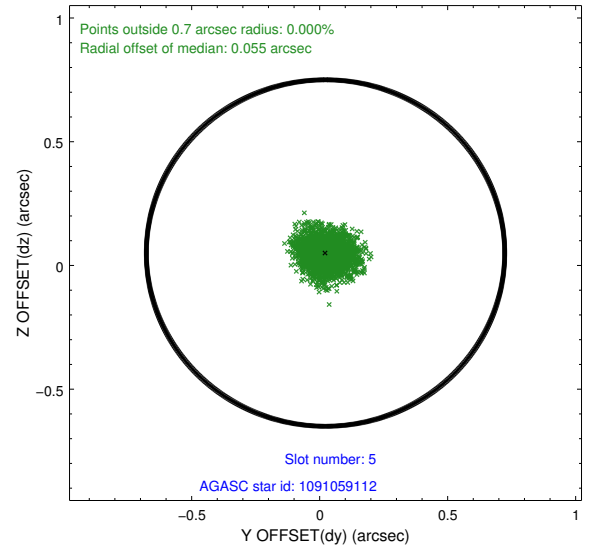
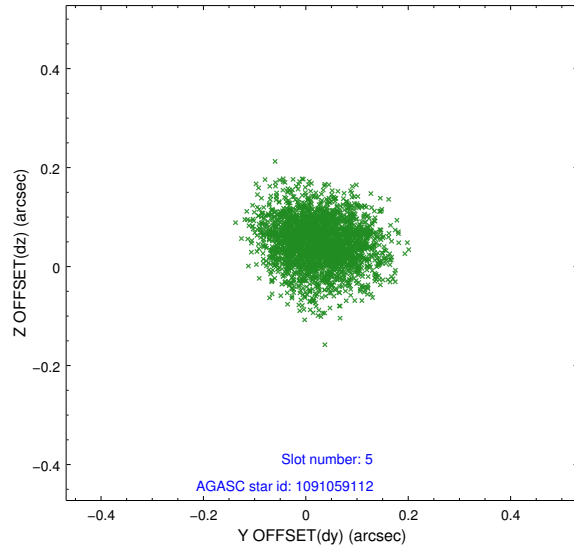
2.4.1 Slot 3



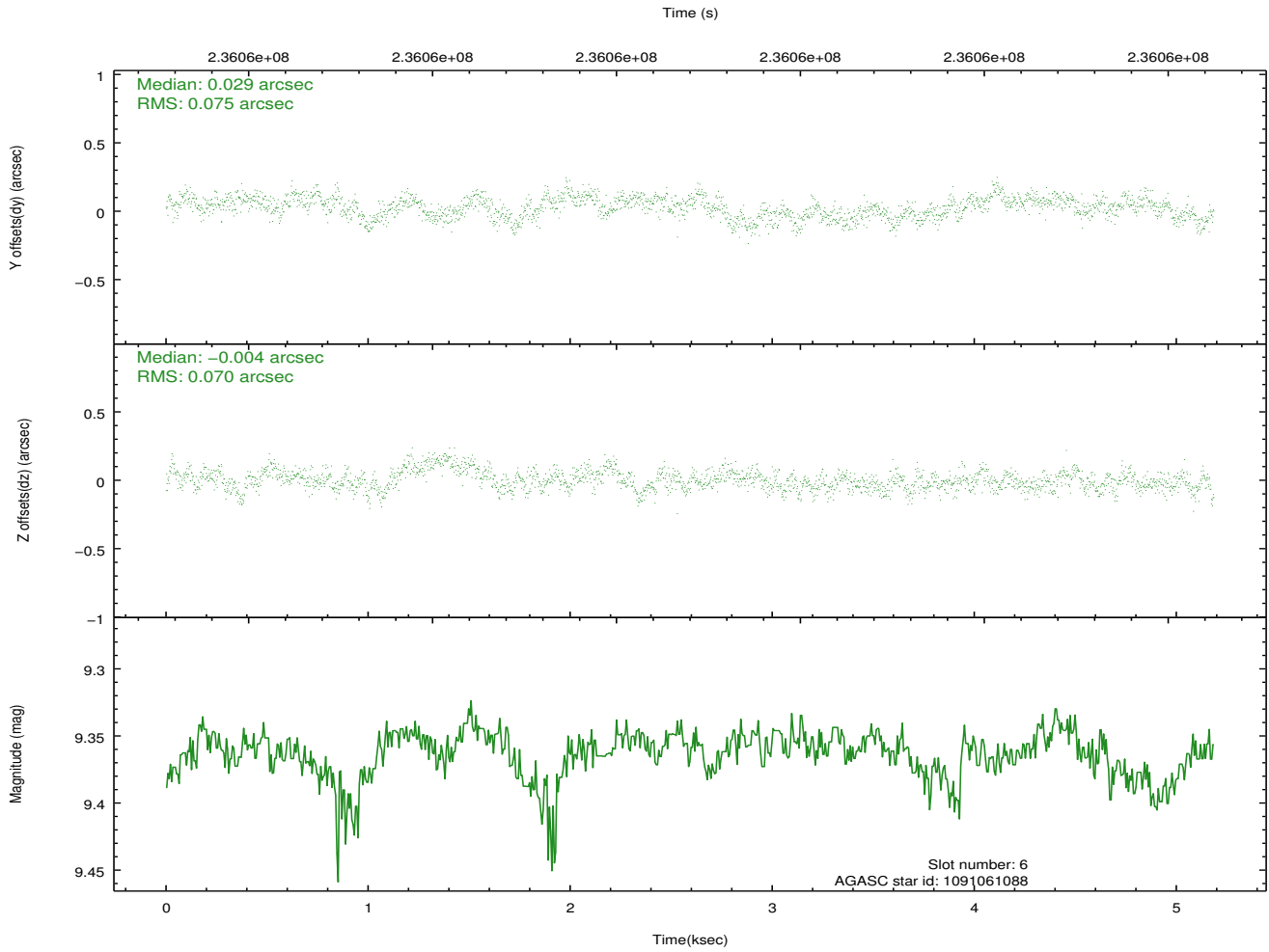
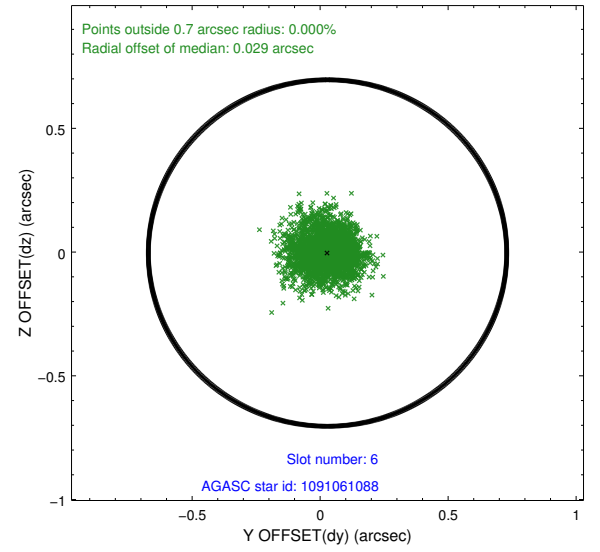
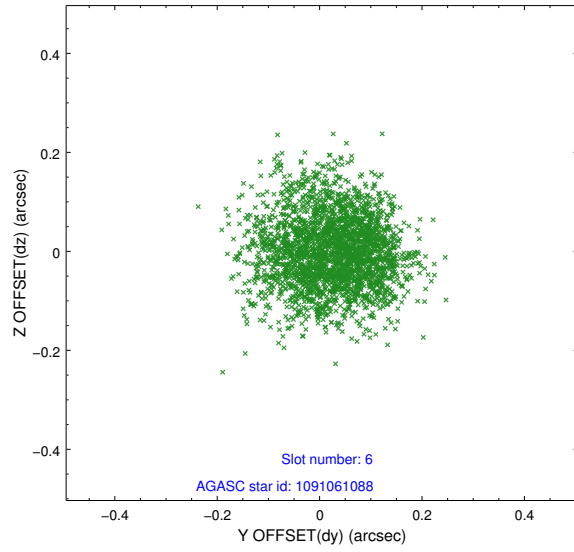
2.4.2 Slot 4



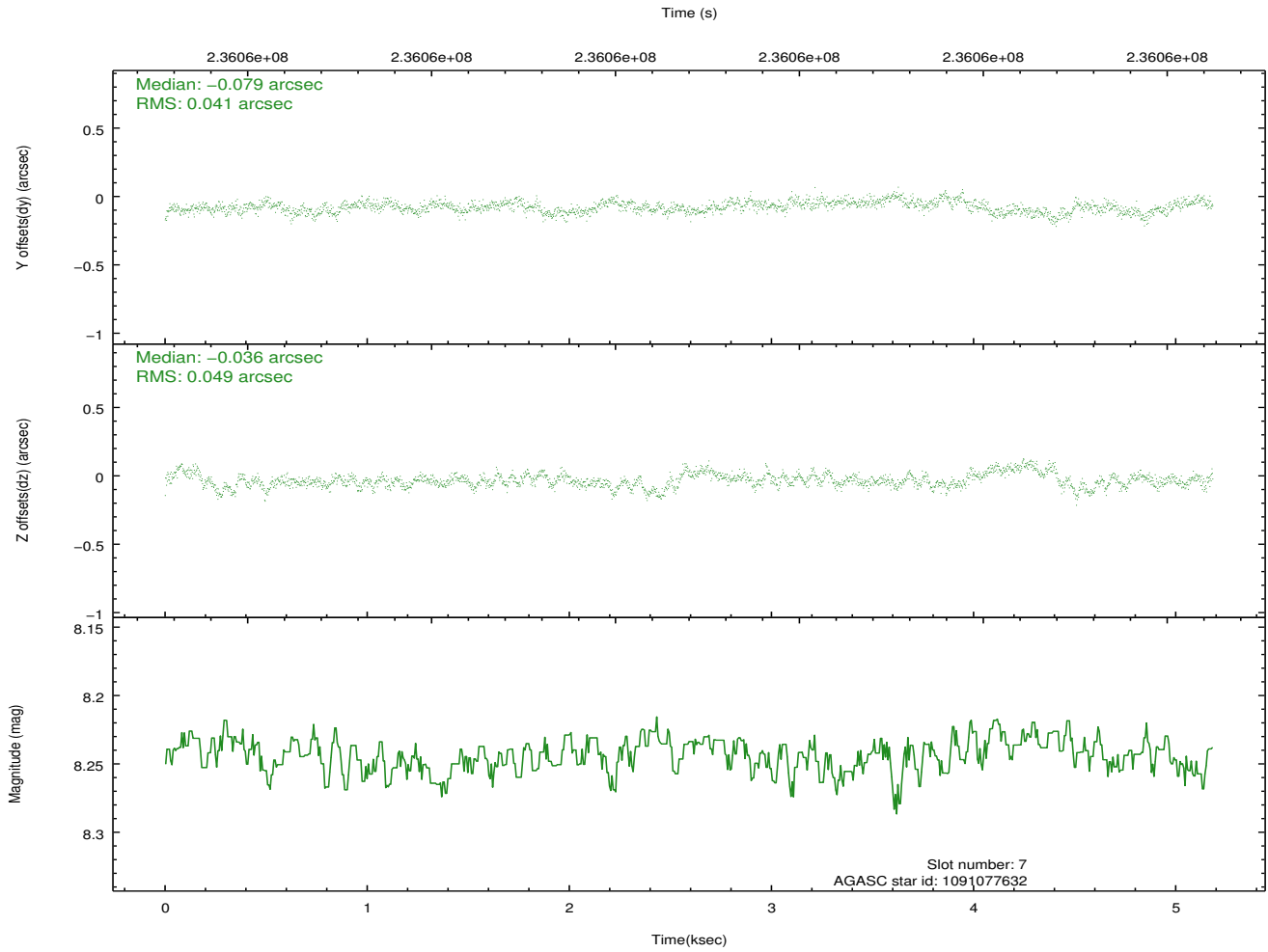
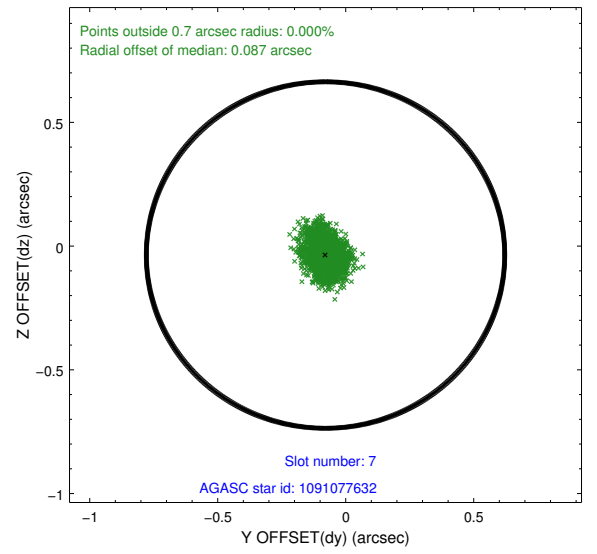
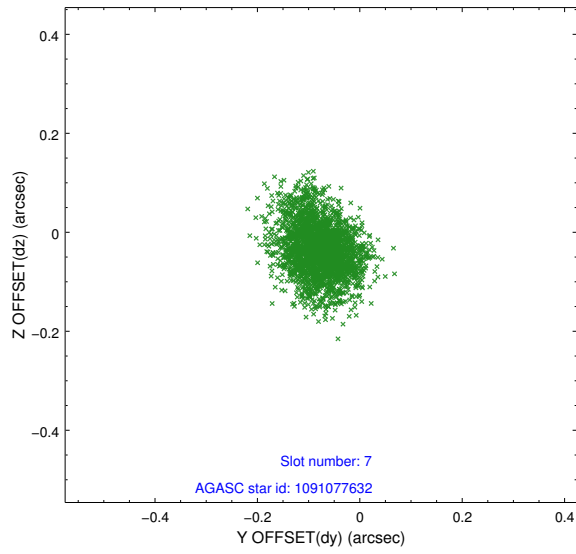
2.4.3 Slot 5



2.4.4 Slot 6

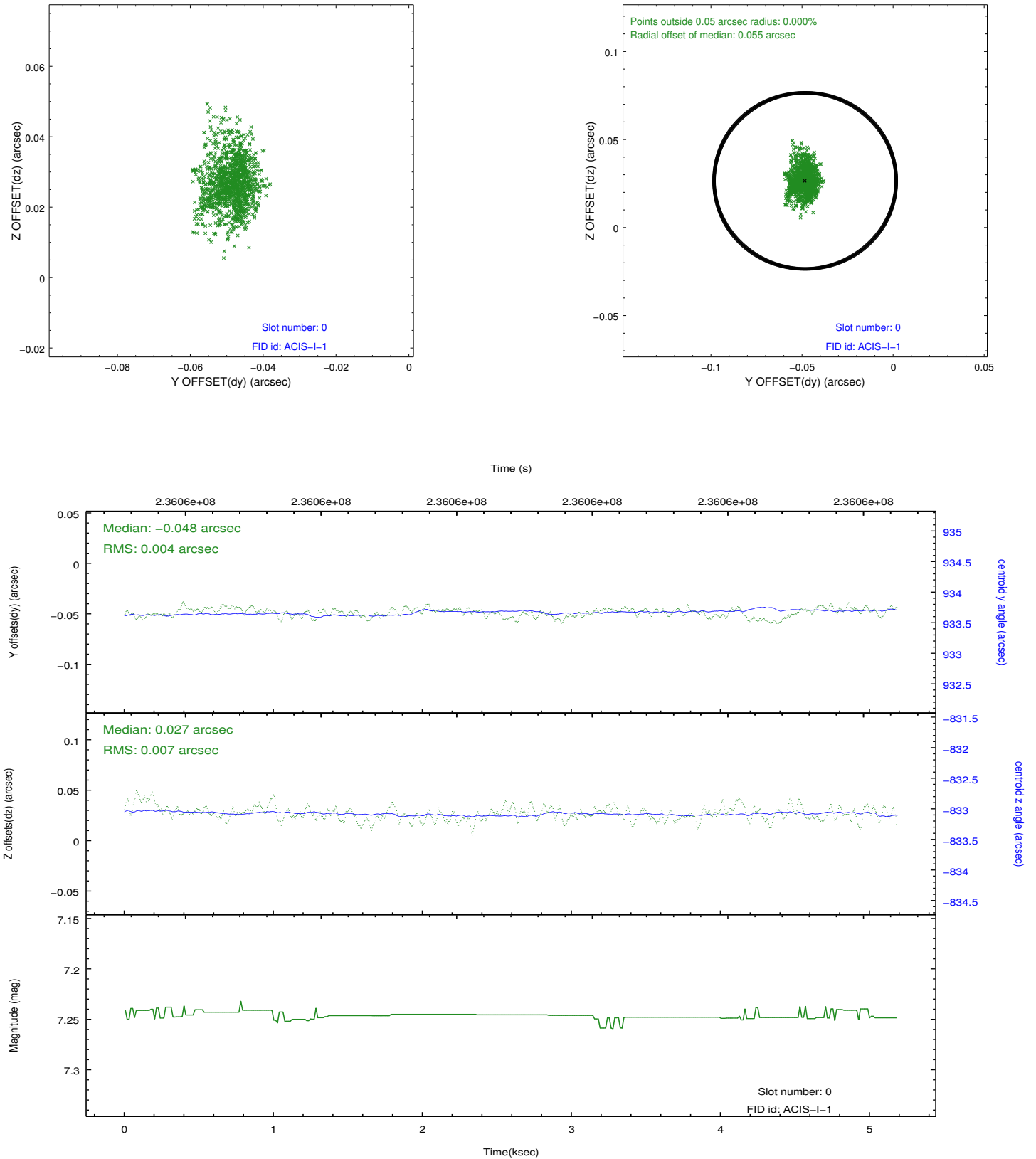


2.4.5 Slot 7

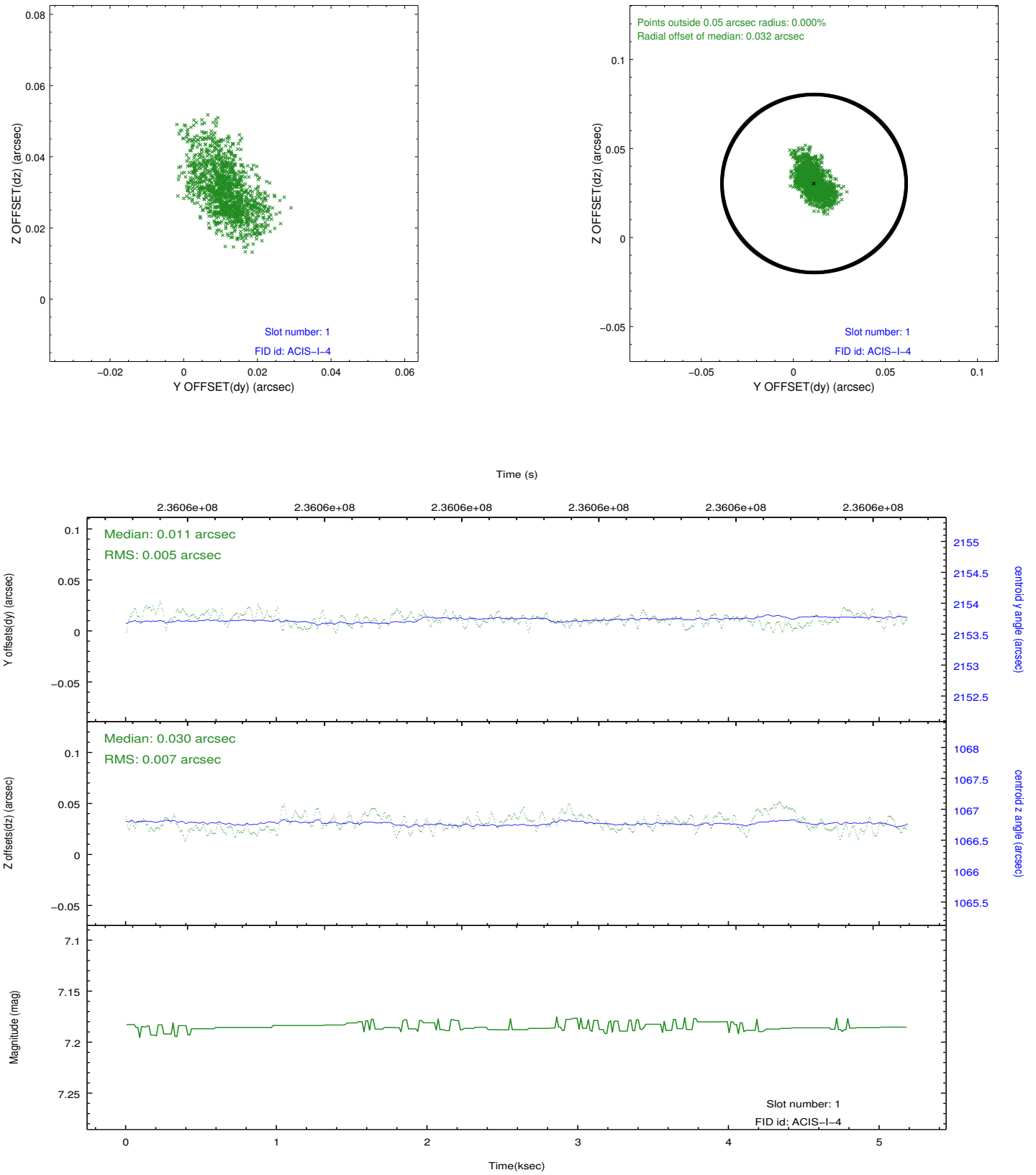


2.5 FID Slots

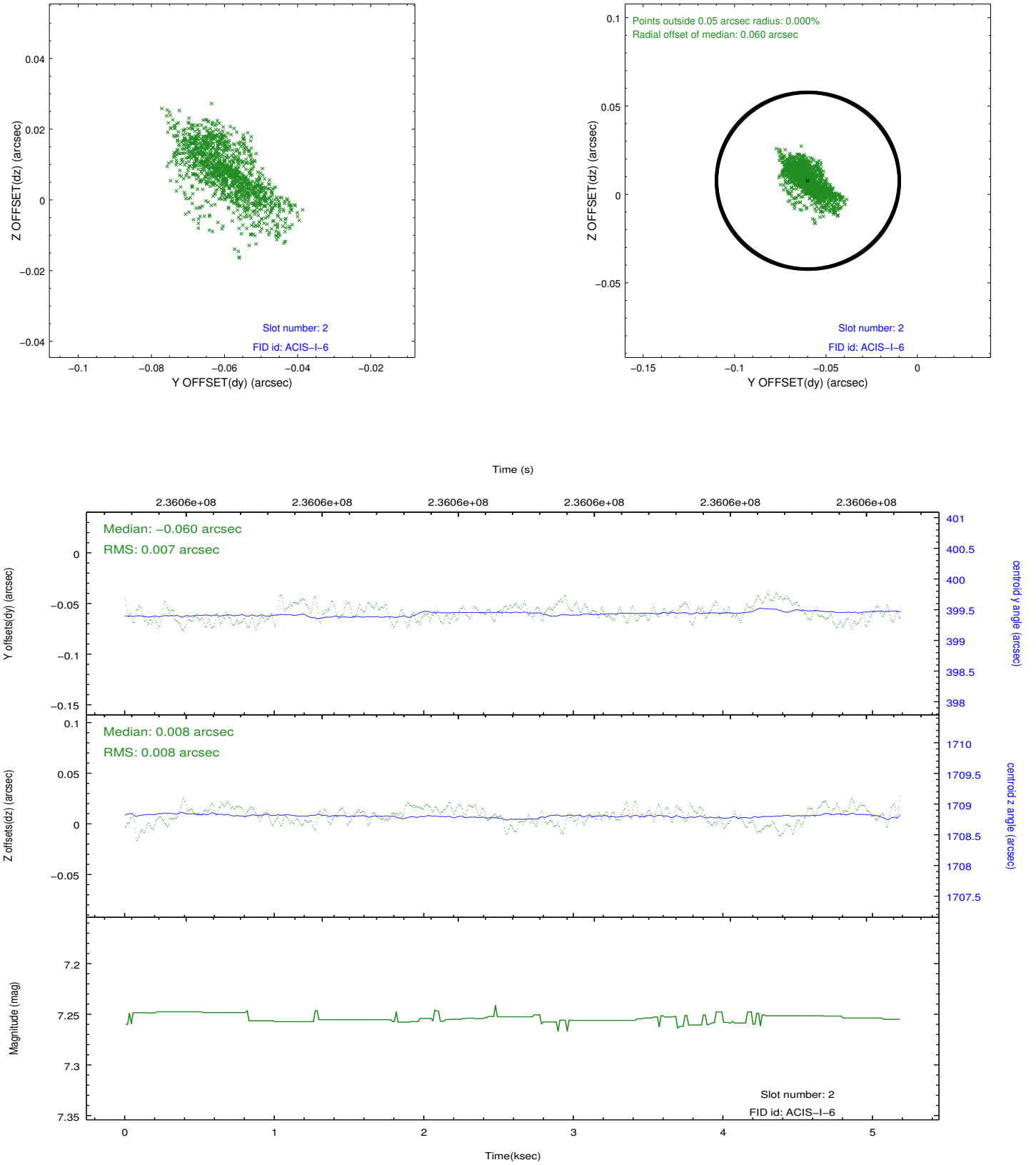
2.5.1 Slot 0



2.5.2 Slot 1



2.5.3 Slot 2



A Summary

A.1 Status

| | |
|----------------------------|------------|
| V&V Scientist | Jen Lauer |
| V&V Date (YYYY-MM-DD) | 2013.01.17 |
| V&V Edition | 1 |
| V&V Disposition and Status | OK |
| V&V Charge Time | 5.174399 |

A.2 Comments