

V&V Reference Report

L2 ASCDS Version : 7.6.7.1

Observation 5472 - L2 Version 002
Chandra X-Ray Center

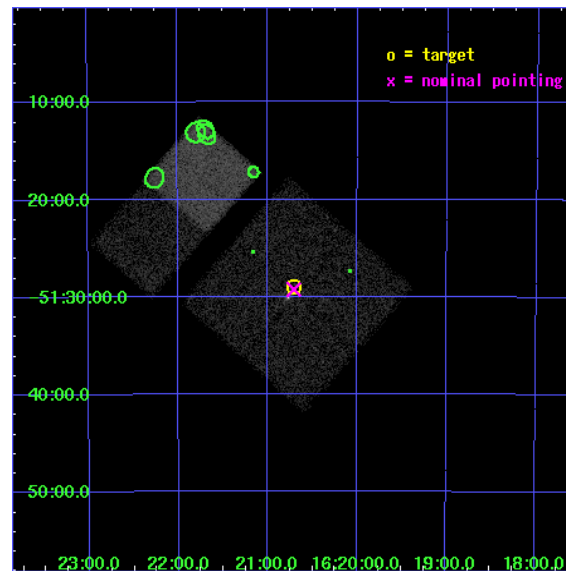
L2 Processing Date : Mar 11 2006

Contents

1	Front	2
2	OBI	3
2.1	OBI	3
2.1.1	Images	3
2.1.2	Bias	3
2.1.3	Parameters	4
2.1.4	Events	4
2.2	Compared Parameters	5
2.3	Aspect	6
2.4	Star Slots	9
2.4.1	Slot 3	9
2.4.2	Slot 4	10
2.4.3	Slot 5	11
2.4.4	Slot 6	12
2.4.5	Slot 7	13
2.5	FID Slots	14
2.5.1	Slot 0	14
2.5.2	Slot 1	15
2.5.3	Slot 2	16
3	Point Sources	17
A	Summary	18
A.1	Status	18
A.2	Comments	18

1 Front

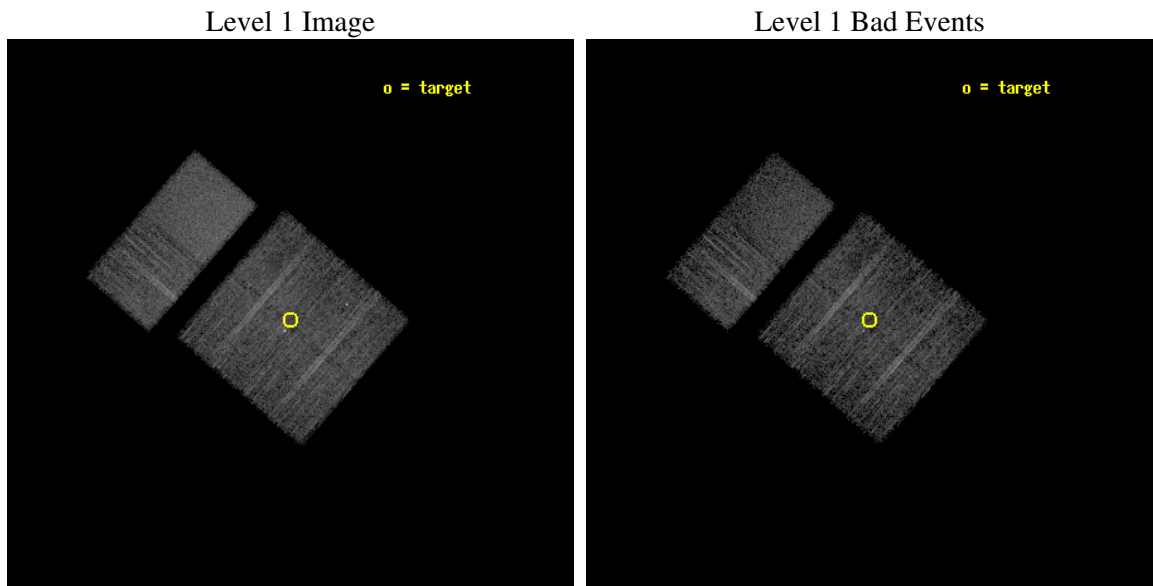
seq_num	400402
obs_id	5472
title	Localization of INTEGRAL-Selected Sources in the Norma Region
observer	Dr. John Tomsick
object	IGR J16207-5129
dtcycle	0
cycle	P
ra_targ	245.175
dec_targ	-51.483333
ra_nom	245.17665879082
dec_nom	-51.487557196293
roll_nom	311.12255615713
revision	2
ontime	5174.3999807239
livetime	5108.8786125183
ontime0	5174.3999807239
ontime1	5174.3999807239
ontime2	5174.3999807239
ontime3	5174.3999807239
ontime6	5174.3999807239
ontime7	5174.3999807239
l2events	45691



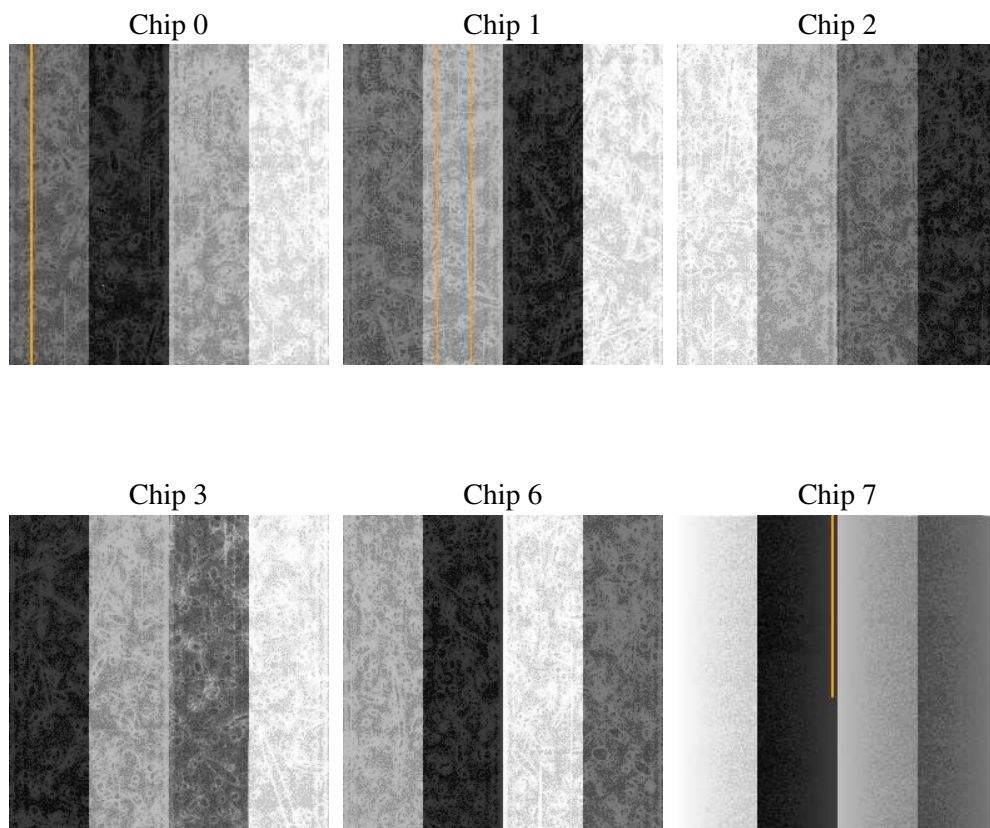
2 OBI

2.1 OBI

2.1.1 Images



2.1.2 Bias



2.1.3 Parameters

obi_num	2
ascdsver	7.6.7.1
caldbver	3.2.1
date	2006-03-11T17:44:05
revision	2

sched_exp_time	5000.000000
ontime	5717.141551435
ontime0	5717.141551435
ontime1	5717.1415713429
ontime2	5717.141551435
ontime3	5717.141551435
ontime6	5717.1415713429
ontime7	5717.1415713429
l1events	283608

2.1.4 Events

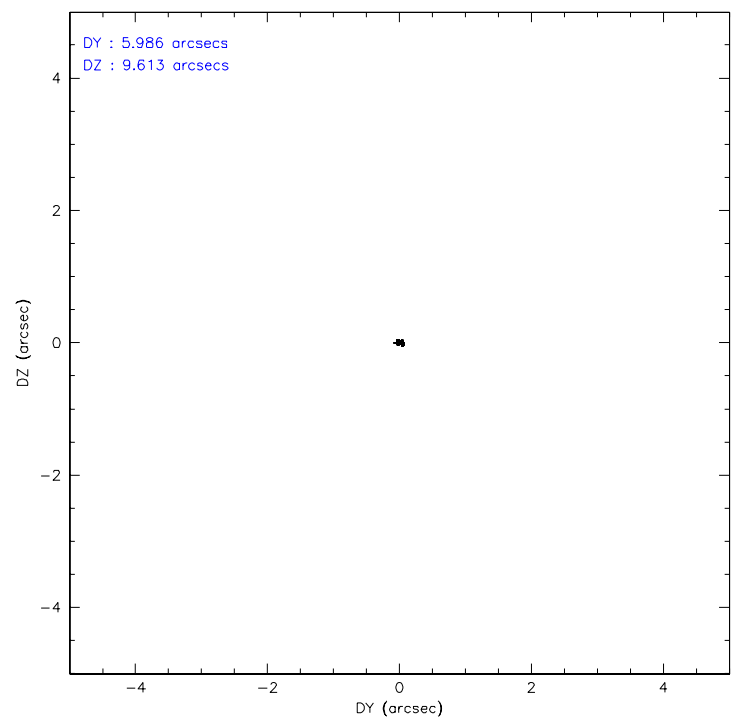
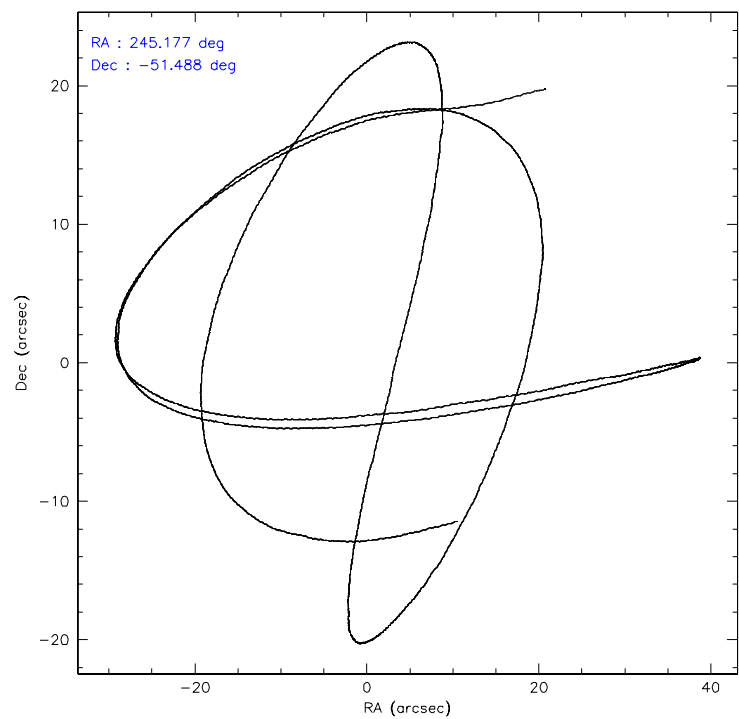
	ccd 0	ccd 1	ccd 2	ccd 3	ccd 6	ccd 7
level 1 events	42870	44215	46264	42473	47641	60145
rejected events	37253	38140	39488	37363	42259	39490
rejected %	86%	86%	85%	87%	88%	65%

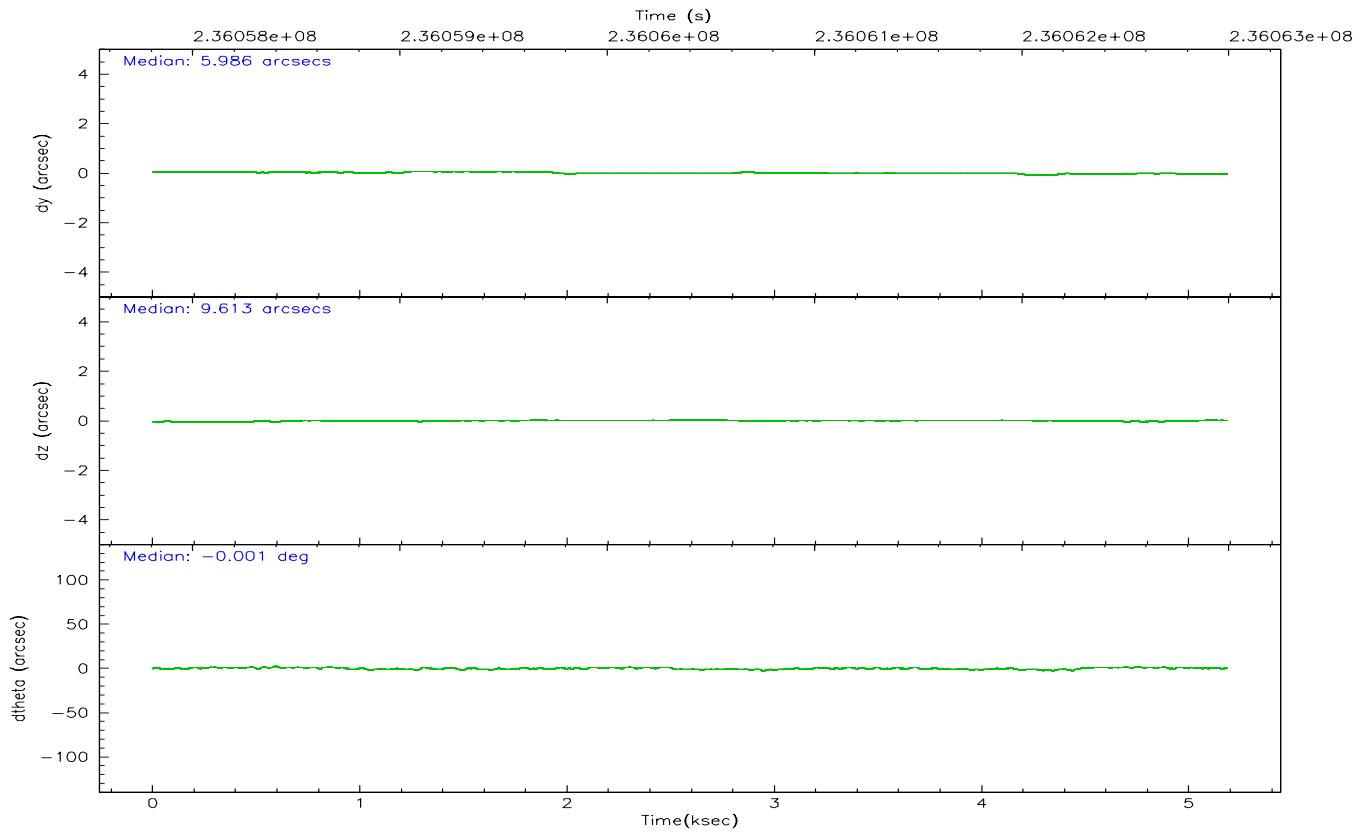
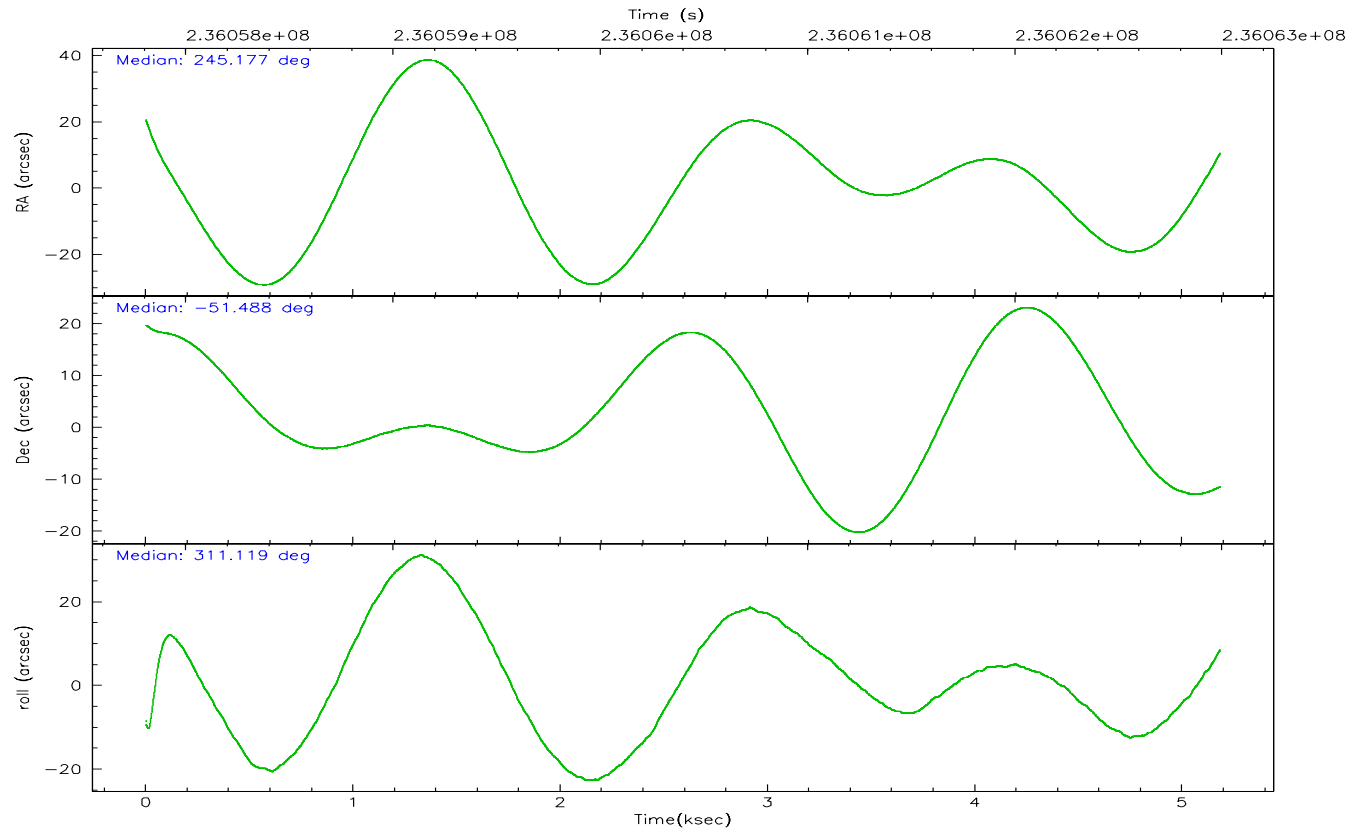
	ccd 0	ccd 1	ccd 2	ccd 3	ccd 6	ccd 7
grade 0 events	3117	3063	3638	2672	2573	1343
	7%	6%	7%	6%	5%	2%
grade 1 events	22	23	146	26	24	35
	0%	0%	0%	0%	0%	0%
grade 2 events	1241	1467	1345	1038	1266	5722
	2%	3%	2%	2%	2%	9%
grade 3 events	509	586	613	543	488	1113
	1%	1%	1%	1%	1%	1%
grade 4 events	504	555	607	490	478	1047
	1%	1%	1%	1%	1%	1%
grade 5 events	1762	1862	1834	2008	2039	3795
	4%	4%	3%	4%	4%	6%
grade 6 events	949	1162	1113	869	1116	13614
	2%	2%	2%	2%	2%	22%
grade 7 events	34766	35497	36968	34827	39657	33476
	81%	80%	79%	81%	83%	55%

2.2 Compared Parameters

Parameter	Planned	Actual	Parameter	Planned	Actual
Instrument	ACIS	ACIS	Obspar format version number	6	6
Detector	ACIS-012367	ACIS-012367	Obspar file type	PREDICTED	ACTUAL
Grating	NONE	NONE	Obspar update status	NONE	UPDATED
Data mode	FAINT	FAINT	On-chip summing requested	N	N
Observation mode	POINTING	POINTING	Subarray requested	NONE	NONE
Pointing RA	245.135655	245.1766587908176	Alternating exposures requested	N	N
Pointing Dec	-51.478971	-51.48755719629317	Primary exposure time	0.000000	3.2
Pointing Roll	310.881866	311.1225561571322			
SIM focus pos (mm)	-0.782348	-0.7809083437167272			
SIM defocus (mm)	0	0.001439871863259334			
SIM translation stage pos (mm)	-233.592463	-233.5874344608287			
SIM translation stage offset (mm)	0	-0.005018542100998502			
Observation start time	236057993.184000	236056654.38631			
Observation start date	2005-06-25T03:38:49	2005-06-25T03:17:34			
Observation end time	236062993.184000	236064059.49915			
Observation end date	2005-06-25T05:02:09	2005-06-25T05:20:59			
Read mode	TIMED	TIMED			

2.3 Aspect



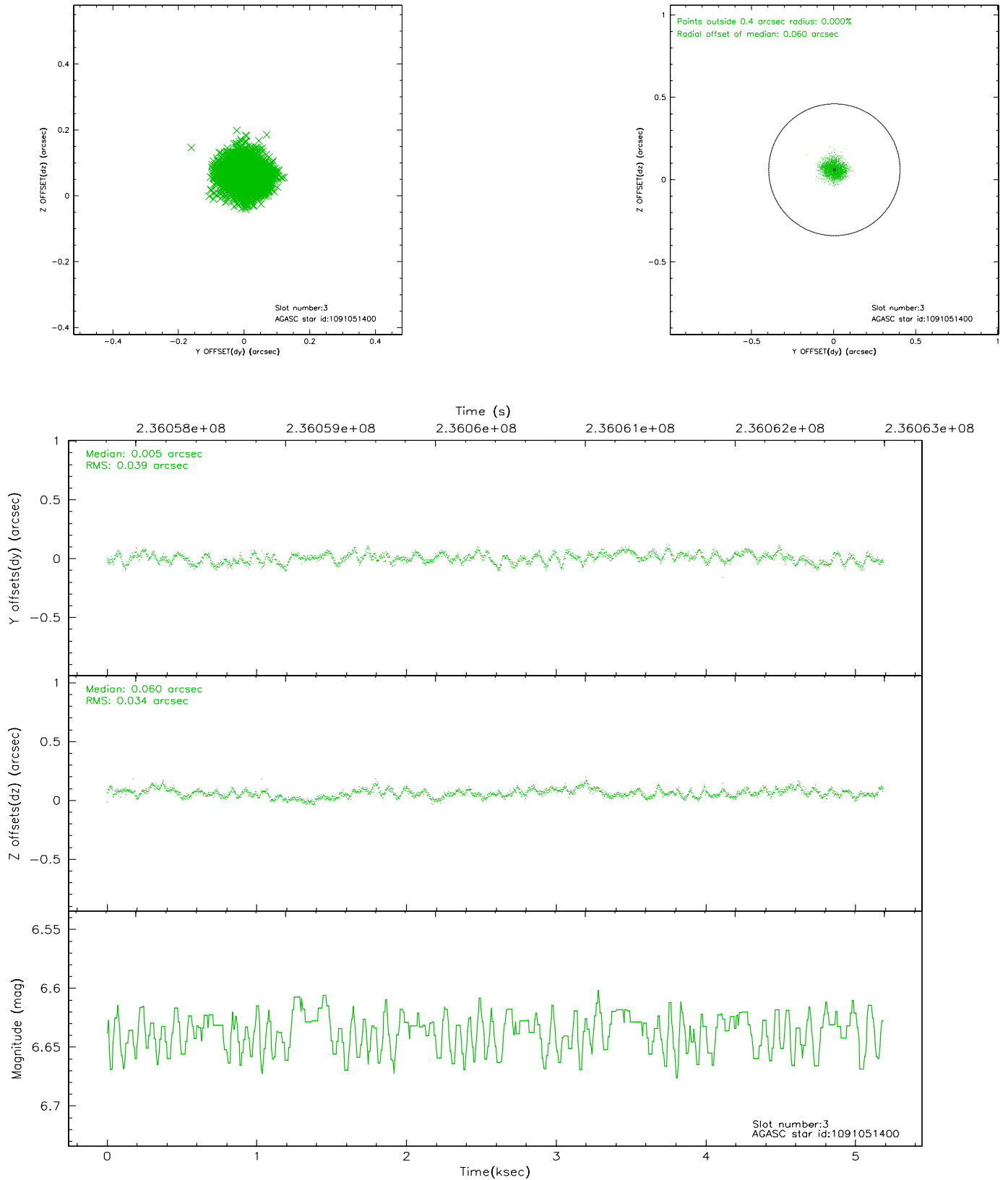


Slot Statistics

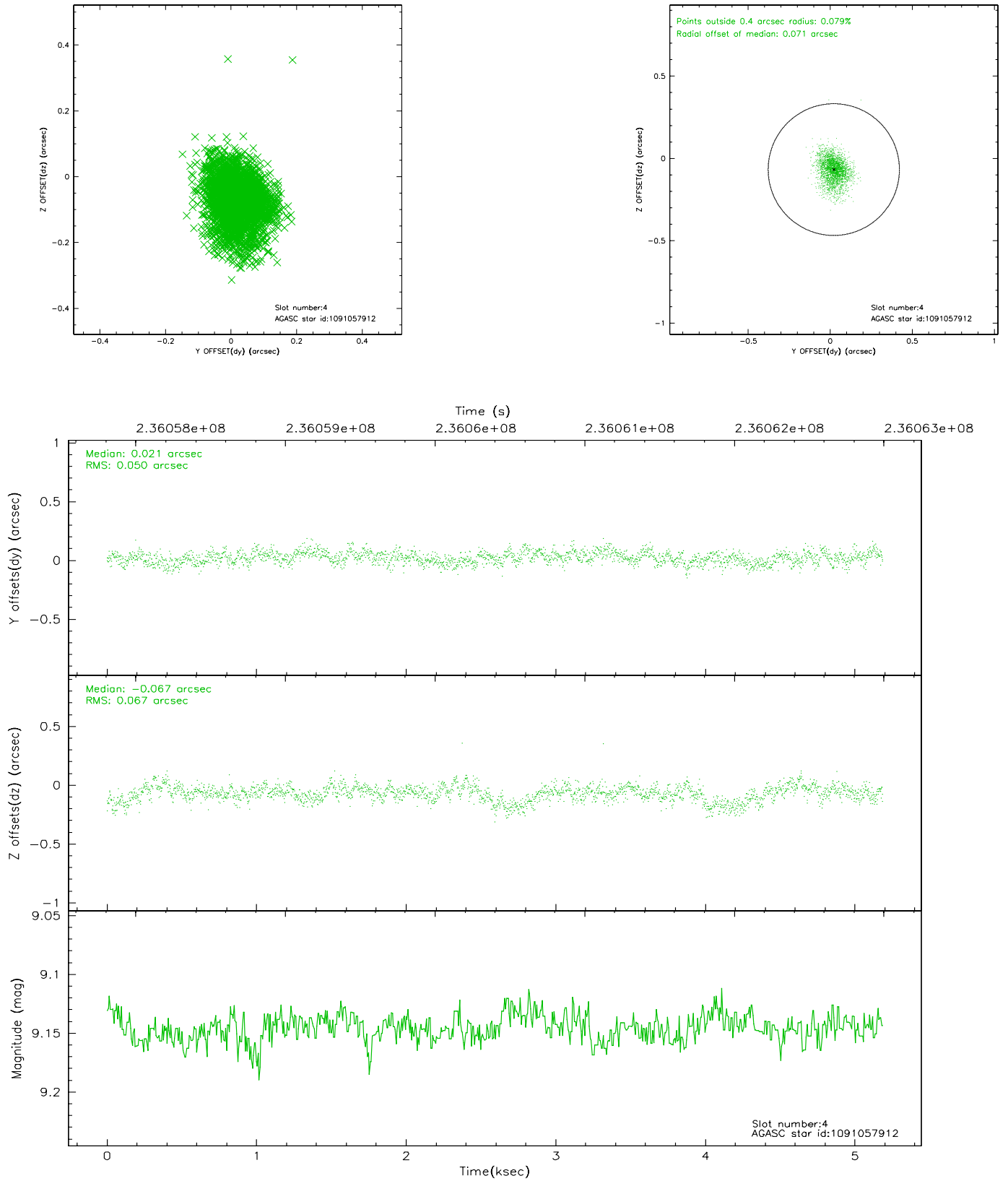
slot	status	id	mag	n_pts	med_dy	med_dz	dr1	dr2	ra	dec	mean_y	mean_z
0	FID	ACIS-I-1	7.25	1265	-0.044	0.054	0.008	0.015	0.000000	0.000000	933.65	-833.04
1	FID	ACIS-I-4	7.19	1265	-0.007	0.023	0.009	0.016	0.000000	0.000000	2154.43	1066.12
2	FID	ACIS-I-6	7.25	1265	-0.046	-0.012	0.011	0.019	0.000000	0.000000	401.13	1709.64
3	GUIDE	1091051400	6.63	2530	0.005	0.060	0.057	0.087	245.403808	-51.751071	1134.34	-189.44
4	GUIDE	1091057912	9.15	2528	0.021	-0.067	0.086	0.148	245.642757	-51.112070	-243.63	1728.92
5	GUIDE	1091059112	9.07	2524	0.023	0.050	0.081	0.129	245.180420	-50.736664	-1952.37	1827.51
6	GUIDE	1091061088	9.36	2530	0.029	-0.004	0.109	0.176	244.721043	-51.407800	-800.28	-536.55
7	GUIDE	1091077632	8.24	2529	-0.079	-0.036	0.067	0.115	246.332364	-51.536413	1927.80	1877.03

2.4 Star Slots

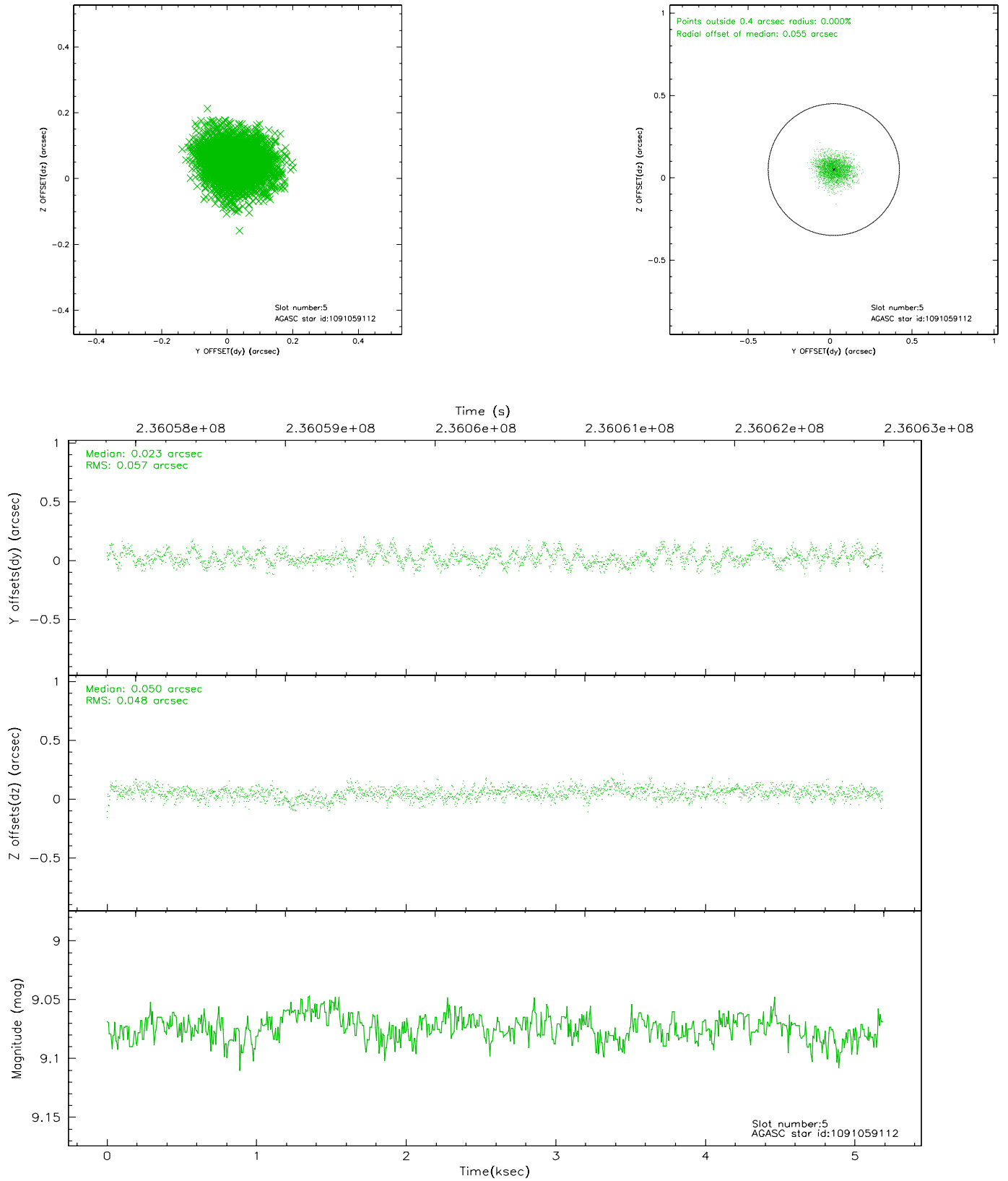
2.4.1 Slot 3



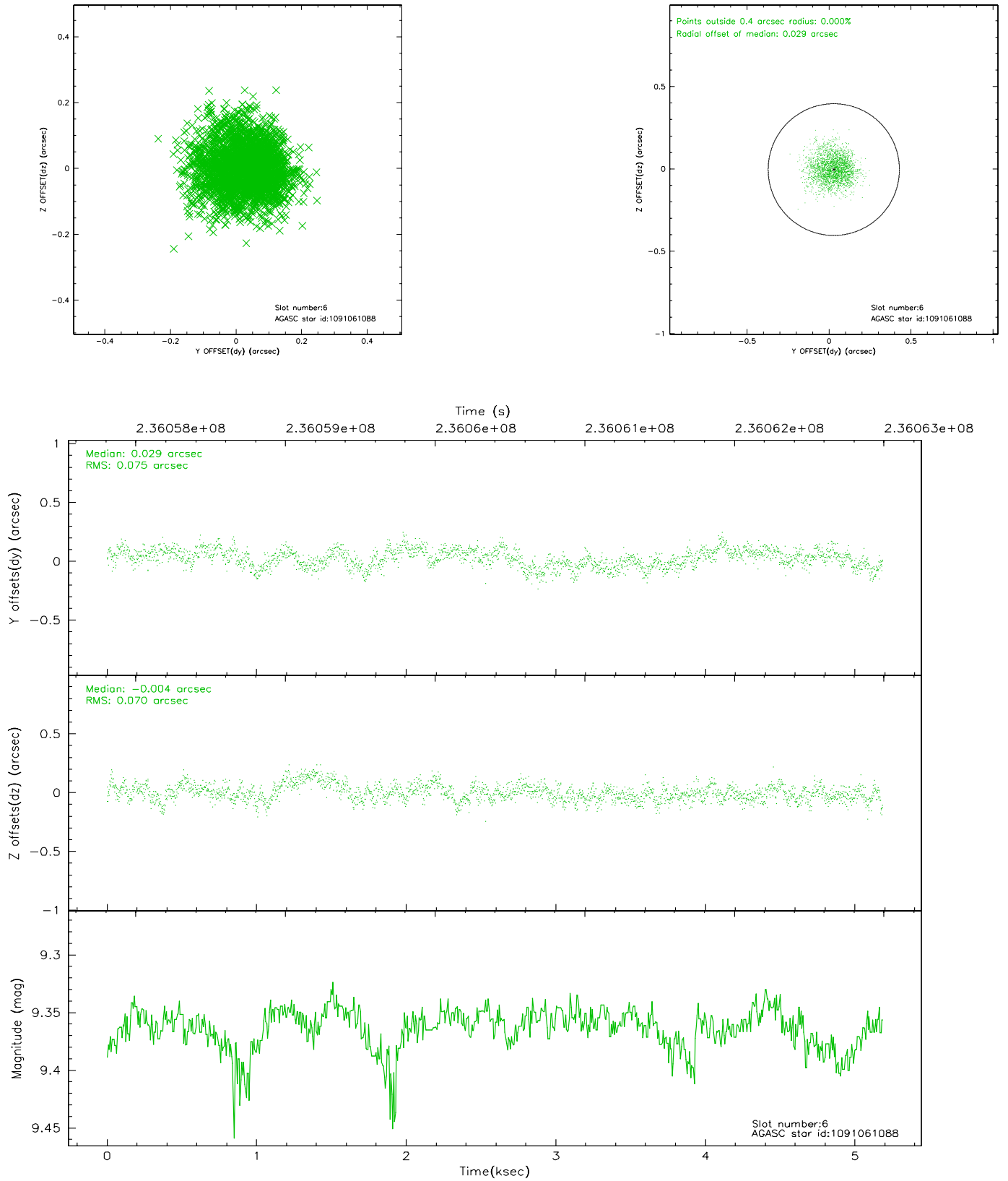
2.4.2 Slot 4



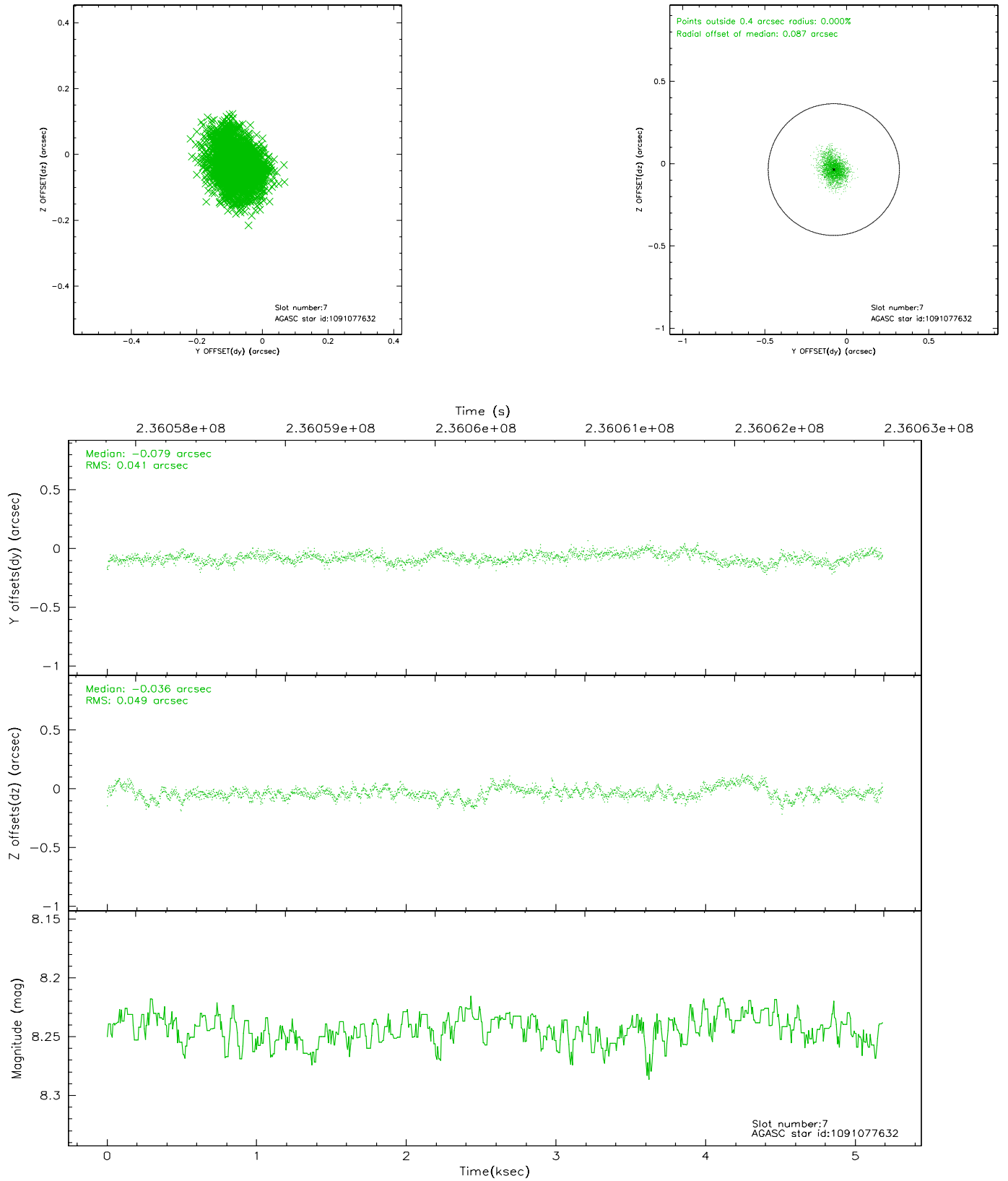
2.4.3 Slot 5



2.4.4 Slot 6

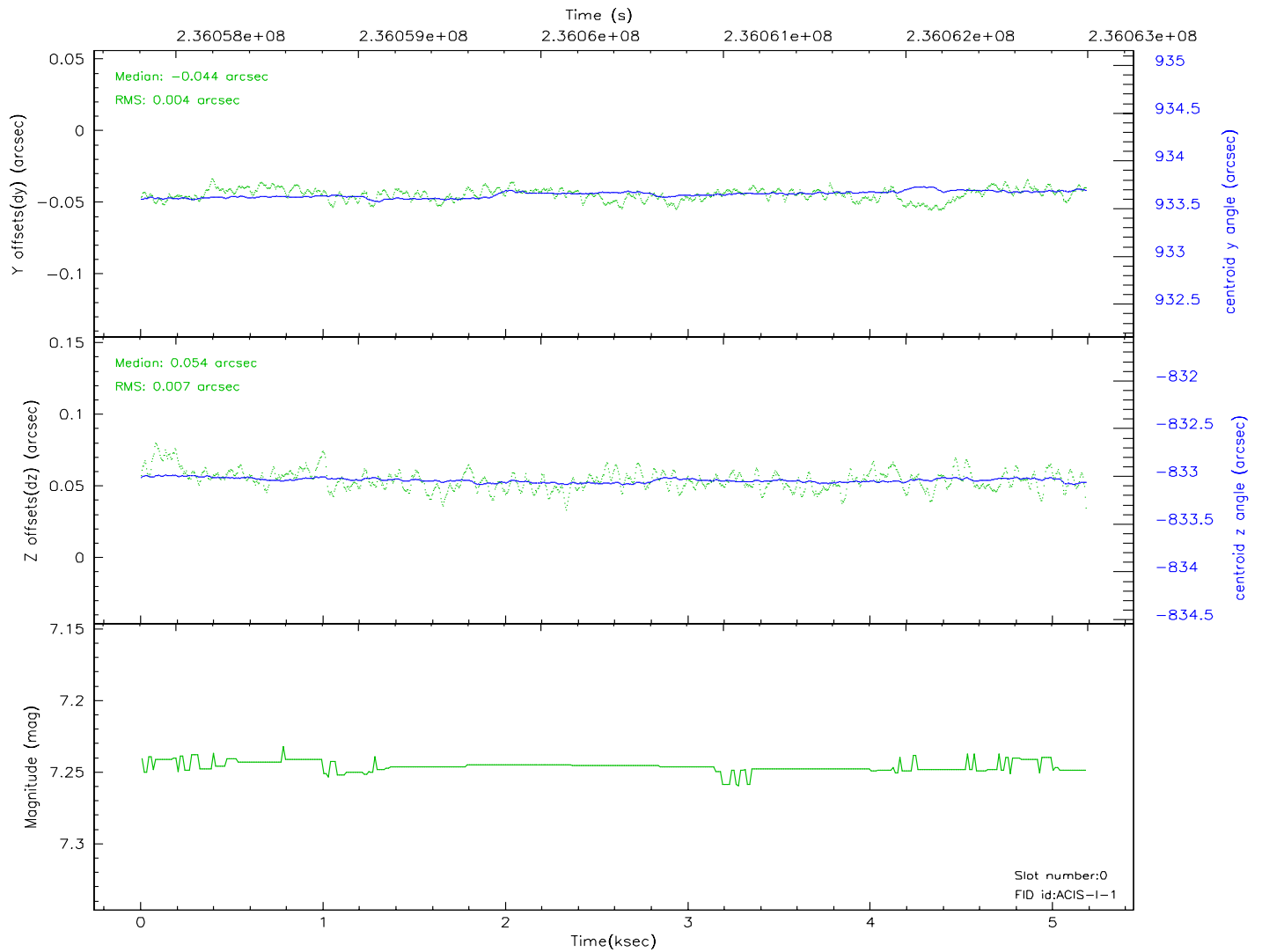
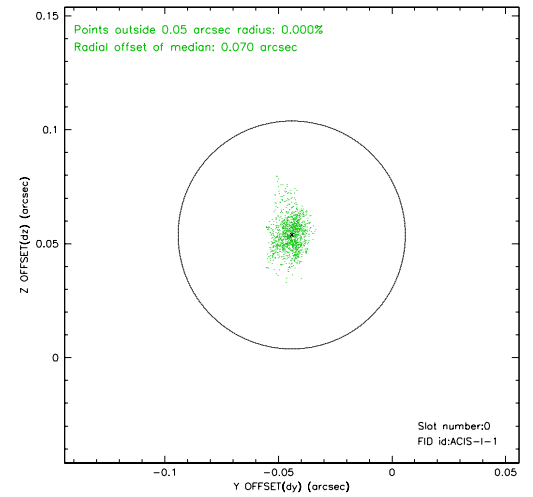
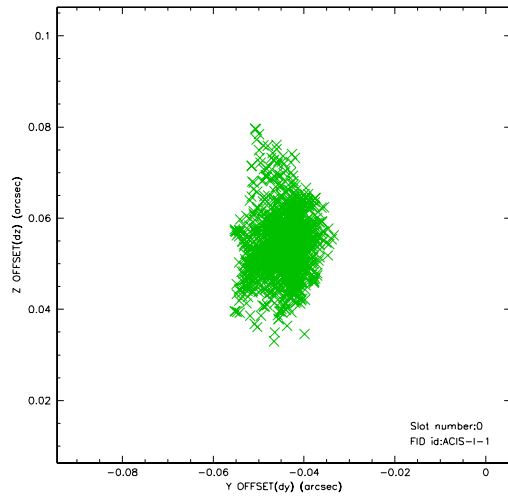


2.4.5 Slot 7

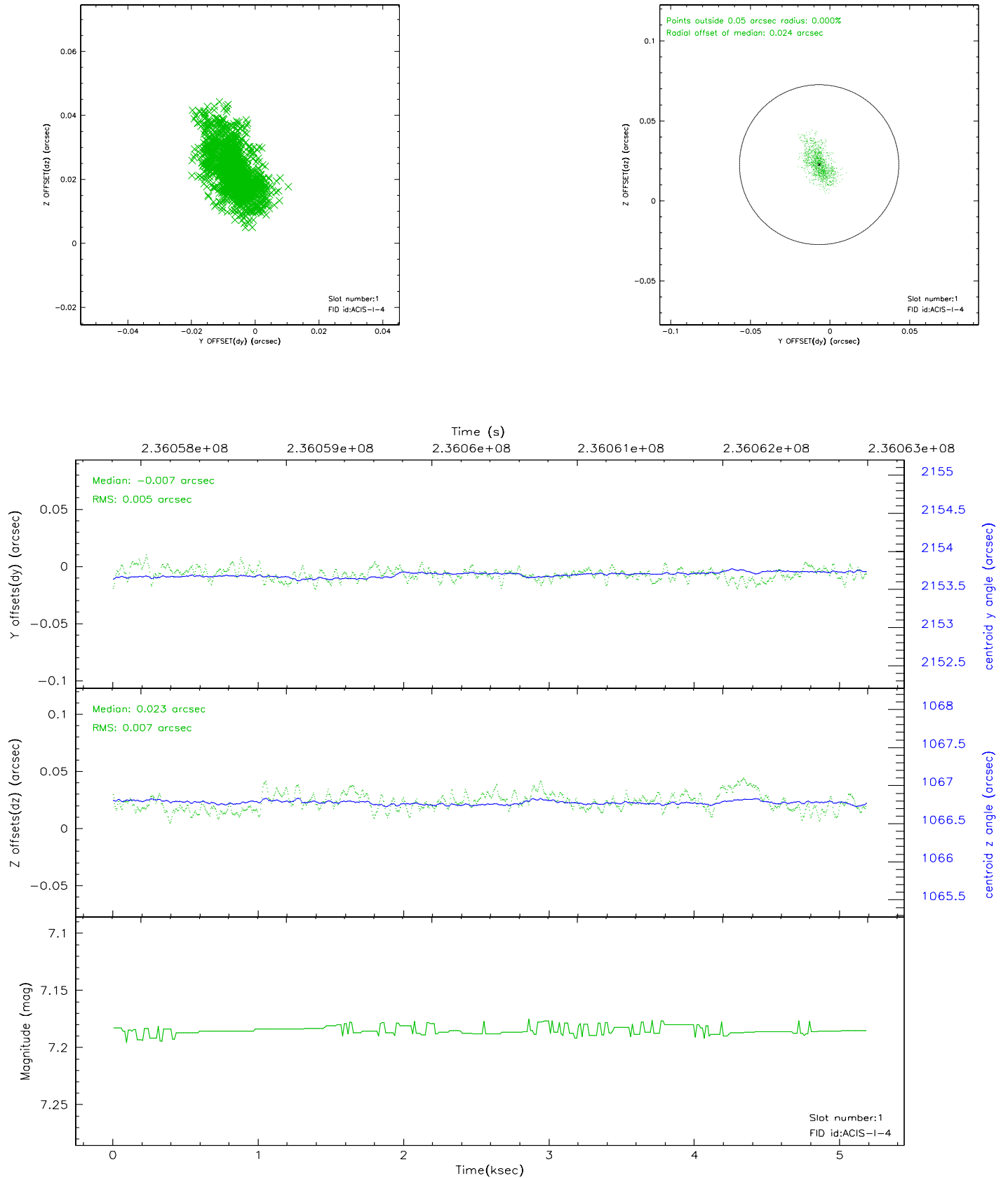


2.5 FID Slots

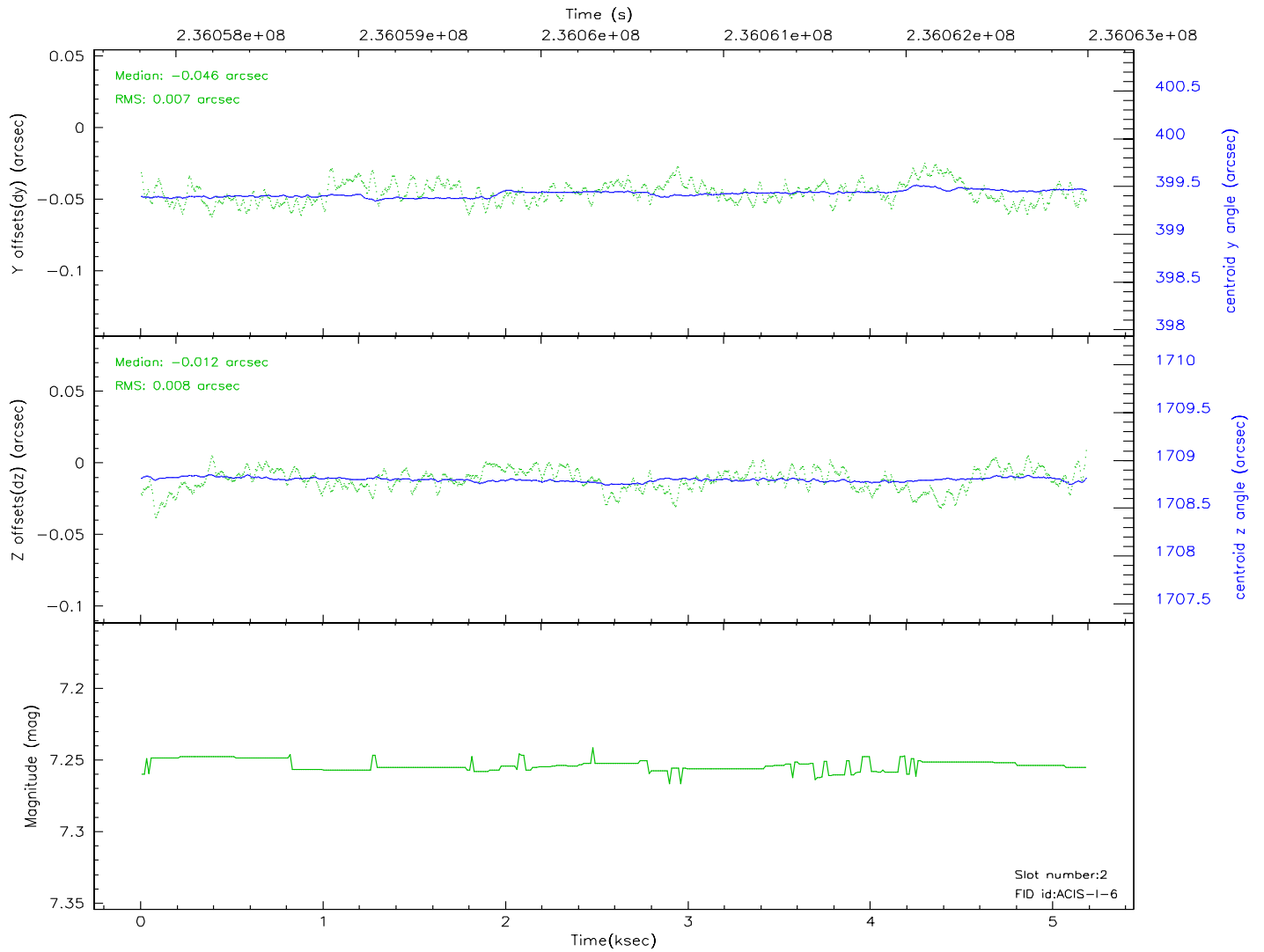
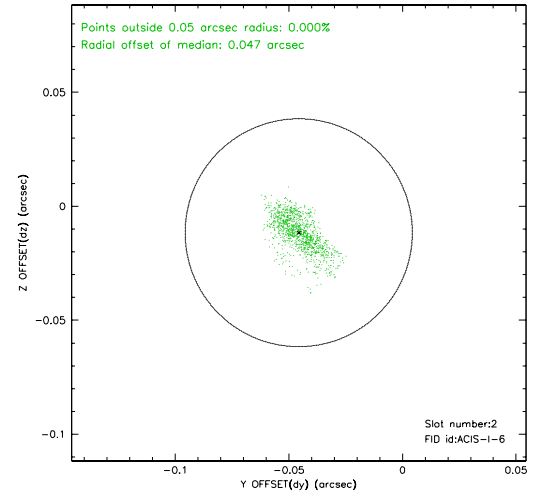
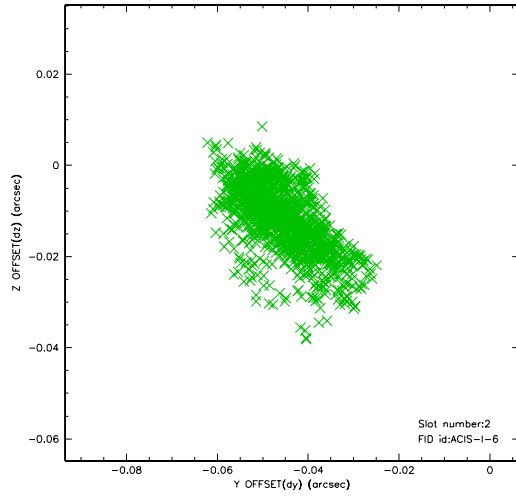
2.5.1 Slot 0



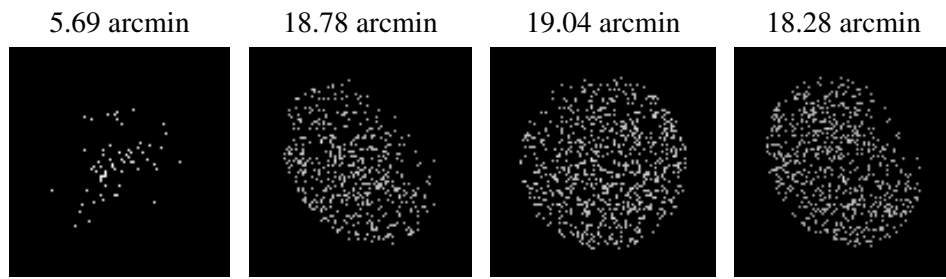
2.5.2 Slot 1



2.5.3 Slot 2



3 Point Sources



A Summary

A.1 Status

V&V Scientist	Jen Lauer
V&V Date (YYYY-MM-DD)	2006.03.13
V&V Edition	1
V&V Disposition and Status	OK
V&V Charge Time	5.174399

A.2 Comments

The ACIS focal plane temperature was above the calibration limits for the entire length of the observation.