

# V&V Reference Report

## L2 ASCDS Version : 8.4.5

Observation 54562 - L2 Version 1  
Chandra X-Ray Center

L2 Processing Date : Jun 9 2012

## Contents

<b>1</b>	<b>Front</b>	<b>2</b>
<b>2</b>	<b>OBI</b>	<b>3</b>
2.1	OBI . . . . .	3
2.1.1	Images . . . . .	3
2.1.2	Bias . . . . .	3
2.1.3	Parameters . . . . .	4
2.1.4	Events . . . . .	4
2.2	Compared Parameters . . . . .	5
2.3	Star Slots . . . . .	6
2.4	FID Slots . . . . .	6
<b>A</b>	<b>Summary</b>	<b>7</b>
A.1	Status . . . . .	7
A.2	Comments . . . . .	7

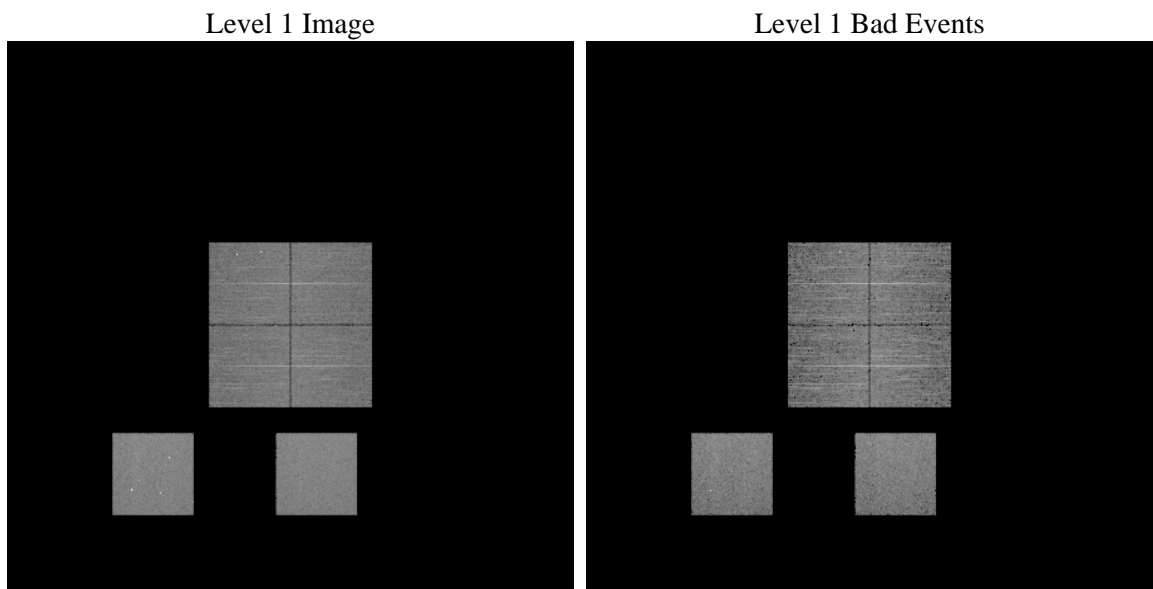
# 1 Front

seq_num	&#160	Sequence number
obs_id	54562	Observation id
title	ACIS-012357 diagnostics	Proposal title
observer	CHANDRA engineering request/realtime commanding	Principal investig
object	&#160	Source name
dtcycle	0	&#160
cycle	P	events from which exps? Prim/Second/Both
ra_targ	0.0	Observer's specified target RA [deg]
dec_targ	0.0	Observer's specified target Dec [deg]
ra_nom	283.97313675484	Nominal RA [deg]
dec_nom	-6.4892999988268	Nominal Dec [deg]
roll_nom	125.25082515853	Nominal Roll [deg]
revision	1	Processing version of data
ontime	8287.3359417915	Sum of GTIs [s]
livetime	8182.396704062	Livetime [s]
ontime0	8287.3359417915	Sum of GTIs [s]
ontime1	8287.3025359511	Sum of GTIs [s]
ontime2	8287.2614959478	Sum of GTIs [s]
ontime3	8287.3359417915	Sum of GTIs [s]
ontime5	8287.2204559445	Sum of GTIs [s]
ontime7	8287.3359417915	Sum of GTIs [s]
l2events	276799	Number of level 2 events

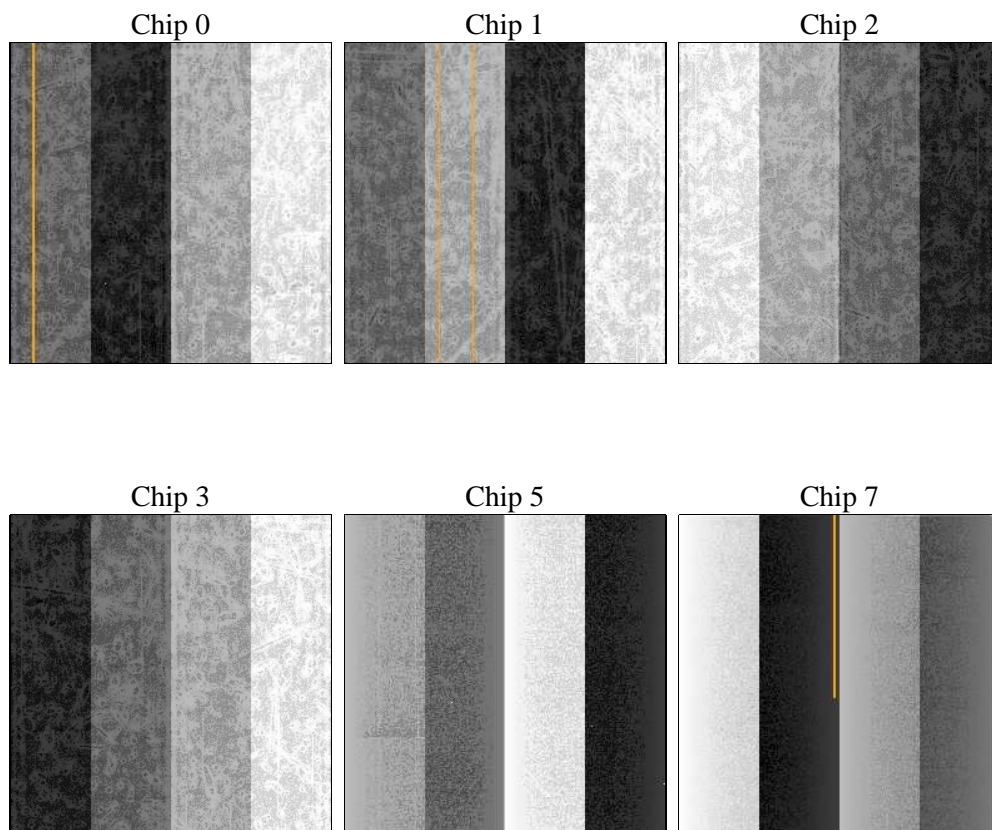
## 2 OBI

### 2.1 OBI

#### 2.1.1 Images



#### 2.1.2 Bias



### 2.1.3 Parameters

obi_num	0	Obi number	sched_exp_time	0.0	[s] Scheduled observation exposure time
ascdsver	8.4.5	Processing system revision	ontime	8287.3359417915	Sum of GTIs [s]
caldsver	4.4.10	&#160	ontime0	8287.3359417915	Sum of GTIs [s]
date	2012-06-09T13:14:22	Date and time of file creation	ontime1	8287.3025359511	Sum of GTIs [s]
revision	1	Processing version of data	ontime2	8287.2614959478	Sum of GTIs [s]
			ontime3	8287.3359417915	Sum of GTIs [s]
			ontime5	8287.2204559445	Sum of GTIs [s]
			ontime7	8287.3359417915	Sum of GTIs [s]
			l1events	590236	Number of level 1 events

### 2.1.4 Events

	ccd 0	ccd 1	ccd 2	ccd 3	ccd 5	ccd 7		ccd 0	ccd 1	ccd 2	ccd 3	ccd 5	ccd 7
level 1 events	88469	84562	85437	88293	125285	118190	grade 0 events	20505	20398	21255	21442	10636	10529
rejected events	46554	44595	45867	48575	53843	53441		23%	24%	24%	24%	8%	8%
rejected %	52%	52%	53%	55%	42%	45%	grade 1 events	1370	109	135	115	153	104
								1%	0%	0%	0%	0%	0%
							grade 2 events	10024	7984	6923	7066	25050	14098
								11%	9%	8%	8%	19%	11%
							grade 3 events	2737	2668	2836	2728	2587	5673
								3%	3%	3%	3%	2%	4%
							grade 4 events	2552	2503	2661	2681	2503	5605
								2%	2%	3%	3%	1%	4%
							grade 5 events	3199	3091	2885	3407	6432	8290
								3%	3%	3%	3%	5%	7%
							grade 6 events	6097	6414	5895	5801	30666	28844
								6%	7%	6%	6%	24%	24%
							grade 7 events	41985	41395	42847	45053	47258	45047
								47%	48%	50%	51%	37%	38%

## 2.2 Compared Parameters

Parameter	Planned	Actual	Parameter	Planned	Actual
Instrument	ACIS	ACIS	Obspar format version number	7	7
Detector	ACIS-012357	ACIS-012357	Obspar file type	PREDICTED	ACTUAL
Grating	NONE	NONE	Obspar update status	NONE	UPDATED
Data mode	FAINT	FAINT	Number of optional ACIS chips dropped	0	0
Observation mode	SECONDARY	SECONDARY	On-chip summing requested	N	N
[deg] Pointing RA	0	283.9731367548425	Subarray requested	NONE	NONE
[deg] Pointing Dec	0	-6.489299998826811	Alternating exposures requested	N	N
[deg] Pointing Roll	0.0	125.2508251585346	[s] Primary exposure time	3.2	3.2
[mm] SIM focus pos	-1.429586	-1.428180813131781			
[mm] SIM defocus	0.1037507710433287	0.1051558262725154			
[mm] SIM translation stage pos	250.455976	250.466033080201			
[mm] SIM translation stage offset	0	-0.01005468664627074			
[s] Observation start time (MET)	455567958.424001	455567957.399			
Observation start date	2012-06-08T18:39:18	2012-06-08T18:39:17			
[s] Observation end time (MET)	455581793.874739	455581792.84974			
Observation end date	2012-06-08T22:29:54	2012-06-08T22:29:52			
Read mode	TIMED	TIMED			

## **2.3 Star Slots**

## **2.4 FID Slots**

## **A Summary**

### **A.1 Status**

V&V Scientist	Jen Lauer
V&V Date (YYYY-MM-DD)	2012.06.11
V&V Edition	1
V&V Disposition and Status	OK
V&V Charge Time	8.2873359417915

### **A.2 Comments**