

V&V Reference Report

L2 ASCDS Version : 8.4.5

Observation 54552 - L2 Version 1
Chandra X-Ray Center

L2 Processing Date : Jun 14 2012

Contents

1	Front	2
2	OBI	3
2.1	OBI	3
2.1.1	Images	3
2.1.2	Bias	3
2.1.3	Parameters	4
2.1.4	Events	4
2.2	Compared Parameters	5
2.3	Star Slots	6
2.4	FID Slots	6
A	Summary	7
A.1	Status	7
A.2	Comments	7

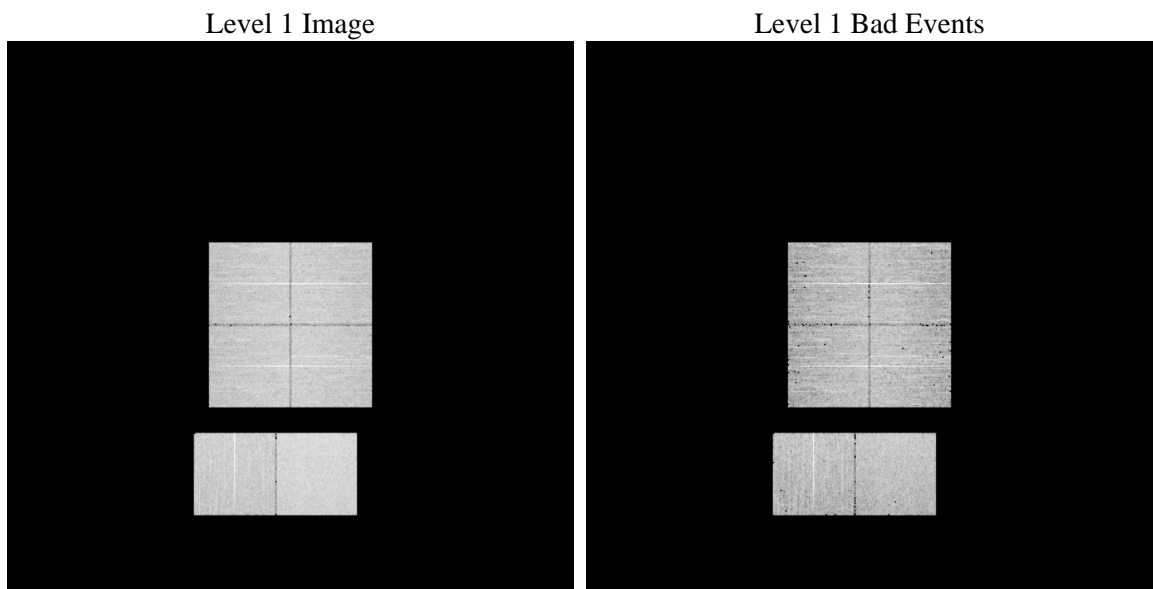
1 Front

seq_num	 	Sequence number
obs_id	54552	Observation id
title	ACIS-012367 diagnostics	Proposal title
observer	CHANDRA engineering request/realtime commanding	Principal investig
object	 	Source name
dtcycle	0	
cycle	P	events from which exps? Prim/Second/Both
ra_targ	0.0	Observer's specified target RA [deg]
dec_targ	0.0	Observer's specified target Dec [deg]
ra_nom	265.03366095016	Nominal RA [deg]
dec_nom	-47.982265985006	Nominal Dec [deg]
roll_nom	5.3340461167724	Nominal Roll [deg]
revision	1	Processing version of data
ontime	8191.5947675705	Sum of GTIs [s]
livetime	8087.8678622373	Livetime [s]
ontime0	8191.5537275672	Sum of GTIs [s]
ontime1	8191.5126875639	Sum of GTIs [s]
ontime2	8191.4716475606	Sum of GTIs [s]
ontime3	8191.6358075738	Sum of GTIs [s]
ontime6	8191.4306075573	Sum of GTIs [s]
ontime7	8191.5947675705	Sum of GTIs [s]
l2events	251496	Number of level 2 events

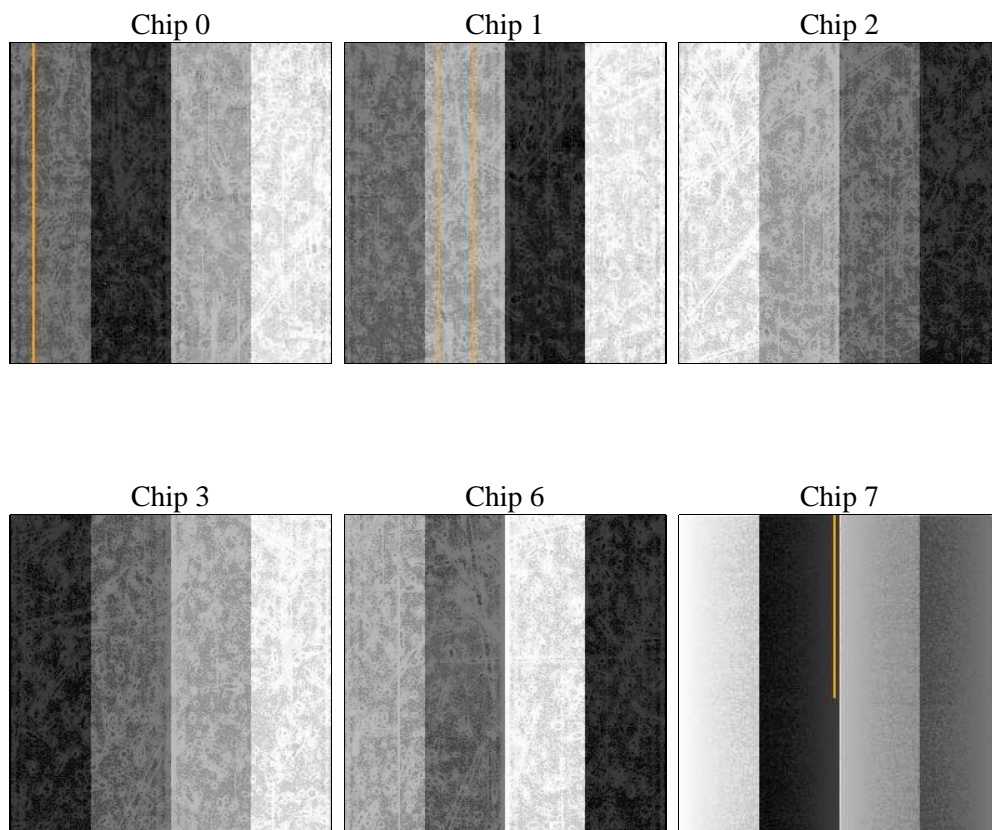
2 OBI

2.1 OBI

2.1.1 Images



2.1.2 Bias



2.1.3 Parameters

obi_num	0	Obi number	sched_exp_time	0.0	[s] Scheduled observation exposure time
ascdsver	8.4.5	Processing system revision	ontime	8191.5947675705	Sum of GTIs [s]
caldbver	4.4.10	 	ontime0	8191.5537275672	Sum of GTIs [s]
date	2012-06-14T18:04:57	Date and time of file creation	ontime1	8191.5126875639	Sum of GTIs [s]
revision	1	Processing version of data	ontime2	8191.4716475606	Sum of GTIs [s]
			ontime3	8191.6358075738	Sum of GTIs [s]
			ontime6	8191.4306075573	Sum of GTIs [s]
			ontime7	8191.5947675705	Sum of GTIs [s]
			l1events	572559	Number of level 1 events

2.1.4 Events

	ccd 0	ccd 1	ccd 2	ccd 3	ccd 6	ccd 7		ccd 0	ccd 1	ccd 2	ccd 3	ccd 6	ccd 7
level 1 events	87034	89455	87142	91645	93877	123406	grade 0 events	20669	20066	21219	21297	21499	11216
rejected events	47827	50170	47827	52416	52523	55548		23%	22%	24%	23%	22%	9%
rejected %	54%	56%	54%	57%	55%	45%	grade 1 events	114	104	121	112	112	98
								0%	0%	0%	0%	0%	0%
							grade 2 events	7514	7737	7225	7000	7721	14750
								8%	8%	8%	7%	8%	11%
							grade 3 events	2710	2643	2815	2788	2857	6119
								3%	2%	3%	3%	3%	4%
							grade 4 events	2689	2749	2735	2735	2663	6064
								3%	3%	3%	2%	2%	4%
							grade 5 events	3327	3348	3072	3562	3480	8649
								3%	3%	3%	3%	3%	7%
							grade 6 events	6055	6551	5808	5854	7142	30509
								6%	7%	6%	6%	7%	24%
							grade 7 events	43956	46257	44147	48297	48403	46001
								50%	51%	50%	52%	51%	37%

2.2 Compared Parameters

Parameter	Planned	Actual
Instrument	ACIS	ACIS
Detector	ACIS-012367	ACIS-012367
Grating	NONE	NONE
Data mode	FAINT	FAINT
Observation mode	SECONDARY	SECONDARY
[deg] Pointing RA	0	265.0336609501593
[deg] Pointing Dec	0	-47.98226598500573
[deg] Pointing Roll	0.0	5.334046116772443
SIM focus pos (mm)	-1.4281808131	-1.4281808131
[mm] SIM defocus	0.1051557500557434	0.1051557500557434
SIM translation stage pos (mm)	250.4660330802	250.4660330802
[mm] SIM translation stage offset	-0.01005726120527584	-0.01005726120527584
[s] Observation start time (MET)	456024151.098273	456024151.098273
Observation start date	2012-06-14T01:22:31	2012-06-14T01:22:31
[s] Observation end time (MET)	456033697.945961	456033697.945961
Observation end date	2012-06-14T04:01:38	2012-06-14T04:01:37
Read mode	TIMED	TIMED

Parameter	Planned	Actual
Obspar format version number	7	7
Obspar file type	PREDICTED	ACTUAL
Obspar update status	OVERRIDE	OVERRIDE
Number of optional ACIS chips dropped	0	0
On-chip summing requested	N	N
Subarray requested	NONE	NONE
Alternating exposures requested	N	N
[s] Primary exposure time	3.2	3.2

2.3 Star Slots

2.4 FID Slots

A Summary

A.1 Status

V&V Scientist	Joy Nichols
V&V Date (YYYY-MM-DD)	2012.06.15
V&V Edition	1
V&V Disposition and Status	OK
V&V Charge Time	8.1915947675705

A.2 Comments