

# V&V Reference Report

## L2 ASCDS Version : 8.5.1.1

Observation 54082 - L2 Version 1  
Chandra X-Ray Center

L2 Processing Date : Dec 22 2012

## Contents

<b>1</b>	<b>Front</b>	<b>2</b>
<b>2</b>	<b>OBI</b>	<b>3</b>
2.1	OBI . . . . .	3
2.1.1	Images . . . . .	3
2.1.2	Bias . . . . .	3
2.1.3	Parameters . . . . .	4
2.1.4	Events . . . . .	4
2.2	Compared Parameters . . . . .	5
2.3	Star Slots . . . . .	6
2.4	FID Slots . . . . .	6
<b>A</b>	<b>Summary</b>	<b>7</b>
A.1	Status . . . . .	7
A.2	Comments . . . . .	7

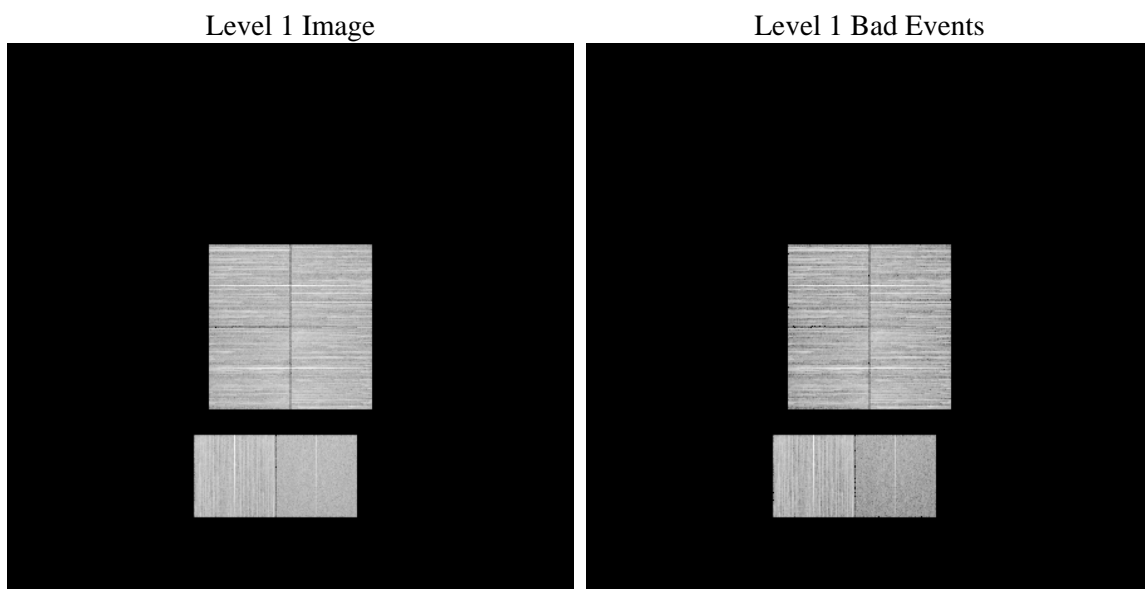
# 1 Front

seq_num	&#160	Sequence number
obs_id	54082	Observation id
title	ACIS-012367 diagnostics	Proposal title
observer	CHANDRA engineering request/realtime commanding	Principal investig
object	&#160	Source name
dtcycle	0	&#160
cycle	P	events from which exps? Prim/Second/Both
ra_targ	0.0	Observer's specified target RA [deg]
dec_targ	0.0	Observer's specified target Dec [deg]
ra_nom	80.028174512729	Nominal RA [deg]
dec_nom	0.0060561925854766	Nominal Dec [deg]
roll_nom	338.58041400169	Nominal Roll [deg]
revision	1	Processing version of data
ontime	8290.3711447716	Sum of GTIs [s]
livetime	8185.3934734743	Livetime [s]
ontime0	8290.3301047683	Sum of GTIs [s]
ontime1	8290.289064765	Sum of GTIs [s]
ontime2	8290.2480247617	Sum of GTIs [s]
ontime3	8290.4121847749	Sum of GTIs [s]
ontime6	8290.2069847584	Sum of GTIs [s]
ontime7	8290.3711447716	Sum of GTIs [s]
l2events	229692	Number of level 2 events

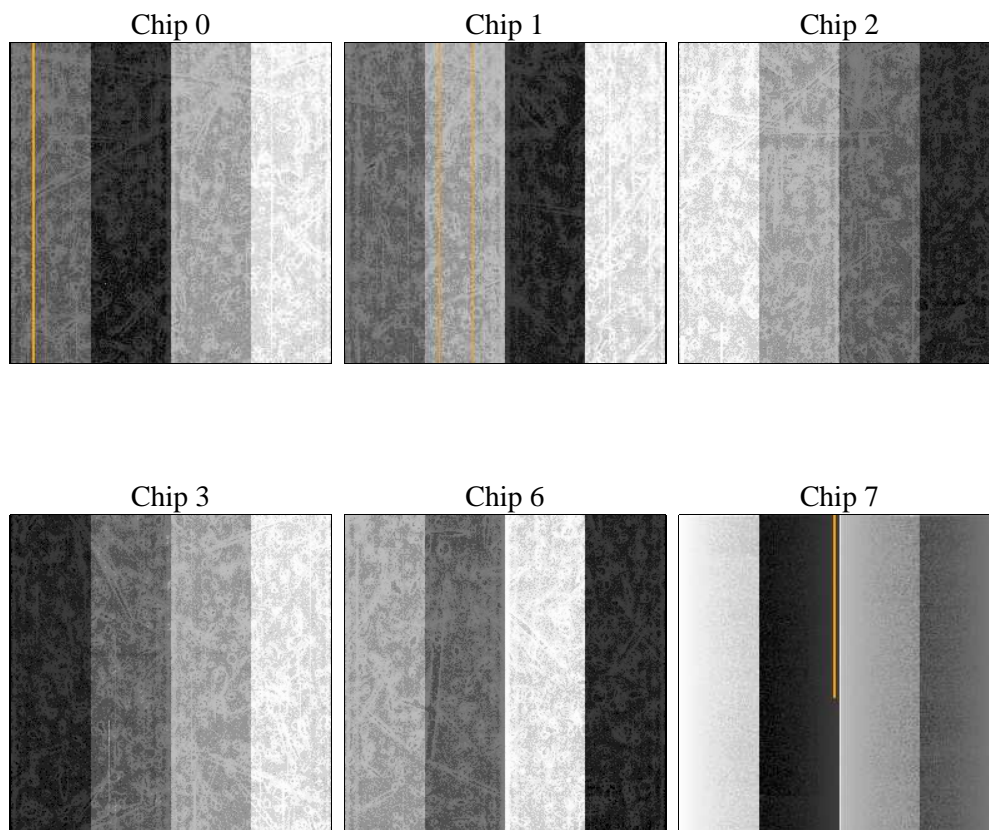
## 2 OBI

### 2.1 OBI

#### 2.1.1 Images



#### 2.1.2 Bias



### 2.1.3 Parameters

obi_num	0	Obi number	sched_exp_time	0.0	[s] Scheduled observation exposure time
ascdsver	8.5.1.1	Processing system revision	ontime	8290.3711447716	Sum of GTIs [s]
caldsver	4.5.5	&#160	ontime0	8290.3301047683	Sum of GTIs [s]
date	2012-12-22T07:47:41	Date and time of file creation	ontime1	8290.289064765	Sum of GTIs [s]
revision	1	Processing version of data	ontime2	8290.2480247617	Sum of GTIs [s]
			ontime3	8290.4121847749	Sum of GTIs [s]
			ontime6	8290.2069847584	Sum of GTIs [s]
			ontime7	8290.3711447716	Sum of GTIs [s]
			l1events	949104	Number of level 1 events

### 2.1.4 Events

	ccd 0	ccd 1	ccd 2	ccd 3	ccd 6	ccd 7		ccd 0	ccd 1	ccd 2	ccd 3	ccd 6	ccd 7
level 1 events	163591	159607	154597	169496	169559	132254	grade 0 events	18241	17551	18925	18982	18886	9762
rejected events	128099	124330	118896	133476	132144	69038		11%	10%	12%	11%	11%	7%
rejected %	78%	77%	76%	78%	77%	52%	grade 1 events	112	81	103	105	75	84
								0%	0%	0%	0%	0%	0%
							grade 2 events	6966	7285	6680	6798	7279	15403
								4%	4%	4%	4%	4%	11%
							grade 3 events	2410	2350	2444	2487	2427	5308
								1%	1%	1%	1%	1%	4%
							grade 4 events	2377	2381	2367	2493	2448	5146
								1%	1%	1%	1%	1%	3%
							grade 5 events	3045	3141	2859	3269	3197	7818
								1%	1%	1%	1%	1%	5%
							grade 6 events	5498	5710	5285	5260	6375	27597
								3%	3%	3%	3%	3%	20%
							grade 7 events	124942	121108	115934	130102	128872	61136
								76%	75%	74%	76%	76%	46%

## 2.2 Compared Parameters

Parameter	Planned	Actual	Parameter	Planned	Actual
Instrument	ACIS	ACIS	Obspar format version number	7	7
Detector	ACIS-012367	ACIS-012367	Obspar file type	PREDICTED	ACTUAL
Grating	NONE	NONE	Obspar update status	NONE	UPDATED
Data mode	FAINT	FAINT	Number of optional ACIS chips dropped	0	0
Observation mode	SECONDARY	SECONDARY	On-chip summing requested	N	N
[deg] Pointing RA	0	80.02817451272946	Subarray requested	NONE	NONE
[deg] Pointing Dec	0	0.006056192585476565	Alternating exposures requested	N	N
[deg] Pointing Roll	0.0	338.58041400169	[s] Primary exposure time	3.2	3.2
[mm] SIM focus pos	-1.429586	-1.428180813131781			
[mm] SIM defocus	0.1037507710433287	0.1051558262725154			
[mm] SIM translation stage pos	250.455976	250.466033080201			
[mm] SIM translation stage offset	0	-0.01005468664627074			
[s] Observation start time (MET)	472476400.329802	472476399.3048			
Observation start date	2012-12-21T11:26:40	2012-12-21T11:26:39			
[s] Observation end time (MET)	472488450.230451	472488449.20545			
Observation end date	2012-12-21T14:47:30	2012-12-21T14:47:29			
Read mode	TIMED	TIMED			

## **2.3 Star Slots**

## **2.4 FID Slots**

## A Summary

### A.1 Status

V&V Scientist	Beth Sundheim
V&V Date (YYYY-MM-DD)	2012.12.23
V&V Edition	1
V&V Disposition and Status	OK
V&V Charge Time	8.2903711447716

### A.2 Comments