

# V&V Reference Report

## L2 ASCDS Version : 7.6.7.1

Observation 5402 - L2 Version 002  
Chandra X-Ray Center

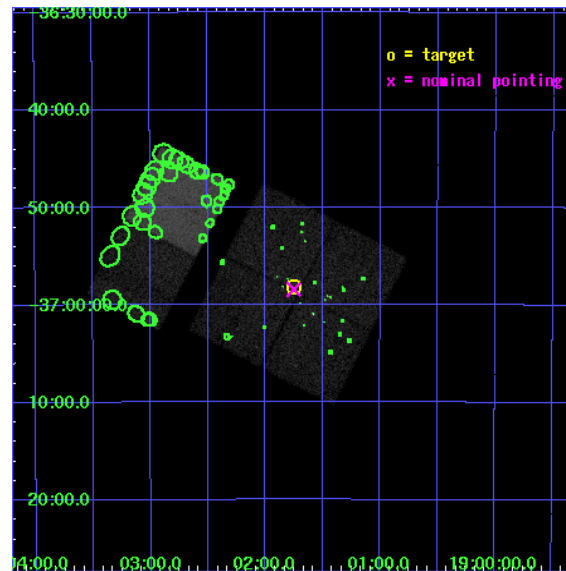
L2 Processing Date : Mar 18 2006

## Contents

<b>1</b>	<b>Front</b>	<b>2</b>
<b>2</b>	<b>OBI</b>	<b>3</b>
2.1	OBI . . . . .	3
2.1.1	Images . . . . .	3
2.1.2	Bias . . . . .	3
2.1.3	Parameters . . . . .	4
2.1.4	Events . . . . .	4
2.2	Compared Parameters . . . . .	5
2.3	Aspect . . . . .	6
2.4	Star Slots . . . . .	9
2.4.1	Slot 3 . . . . .	9
2.4.2	Slot 4 . . . . .	10
2.4.3	Slot 5 . . . . .	11
2.4.4	Slot 6 . . . . .	12
2.4.5	Slot 7 . . . . .	13
2.5	FID Slots . . . . .	14
2.5.1	Slot 0 . . . . .	14
2.5.2	Slot 1 . . . . .	15
2.5.3	Slot 2 . . . . .	16
<b>3</b>	<b>Point Sources</b>	<b>17</b>
<b>A</b>	<b>Summary</b>	<b>18</b>
A.1	Status . . . . .	18
A.2	Comments . . . . .	18

# 1 Front

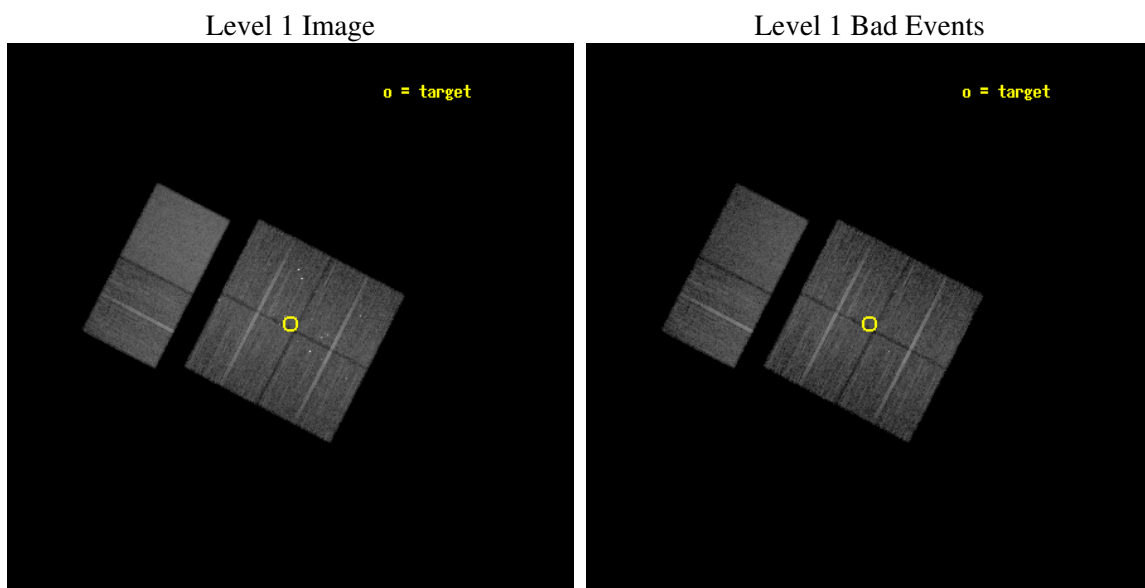
seq_num	200336
obs_id	5402
title	Simultaneous X-ray and Radio Monitoring of YSO Activity in the Coronet Cluster
observer	Jan Forbrich
object	Coronet Cluster
dtcycle	0
cycle	P
ra_targ	285.4375
dec_targ	-36.969167
ra_nom	285.43791642815
dec_nom	-36.973730628137
roll_nom	297.28398155609
revision	2
ontime	15385.599942684
livetime	15190.778212114
ontime0	15385.599942684
ontime1	15385.599942684
ontime2	15382.358932465
ontime3	15385.599942684
ontime6	15379.117912382
ontime7	15385.599942684
l2events	136730



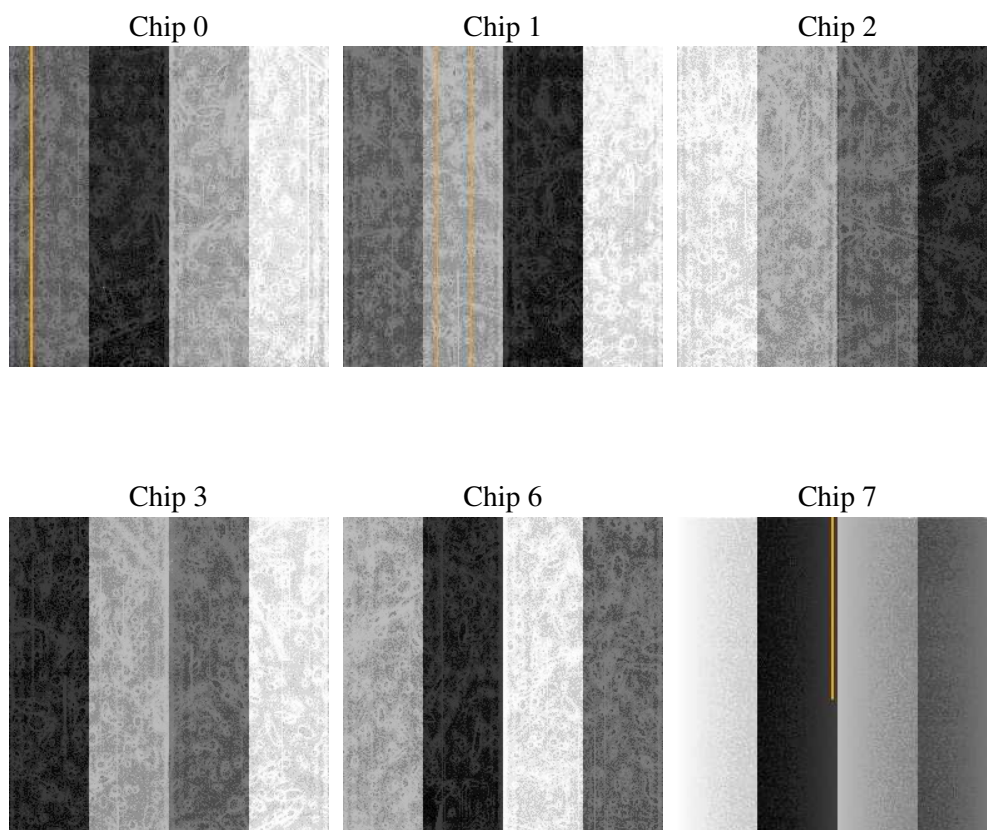
## 2 OBI

### 2.1 OBI

#### 2.1.1 Images



#### 2.1.2 Bias



### 2.1.3 Parameters

obi_num	0
ascdsver	7.6.7.1
caldsver	3.2.1
date	2006-03-19T00:14:29
revision	2

sched_exp_time	15230.000000
ontime	16509.718816906
ontime0	16509.718816906
ontime1	16509.718816906
ontime2	16506.477806687
ontime3	16509.718816906
ontime6	16503.236786604
ontime7	16509.718816906
l1events	733846

### 2.1.4 Events

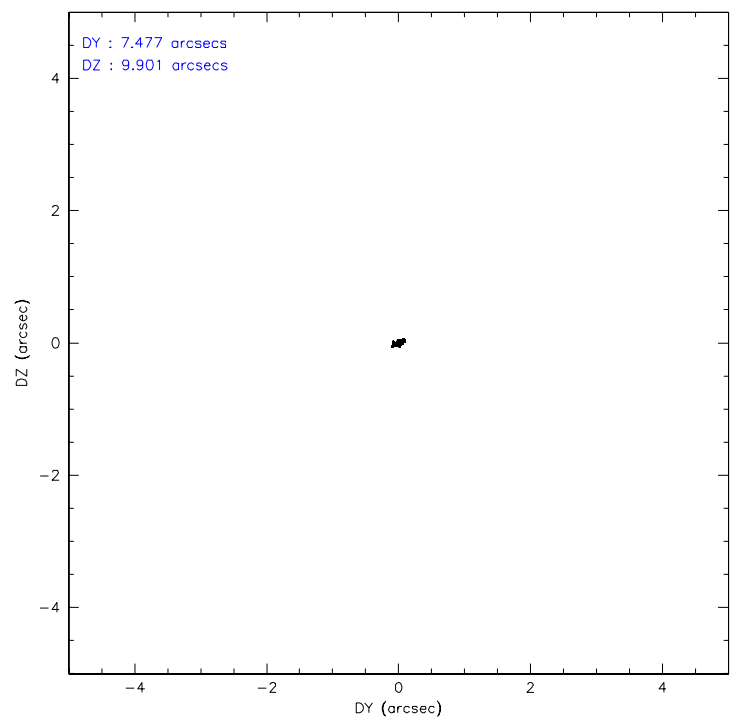
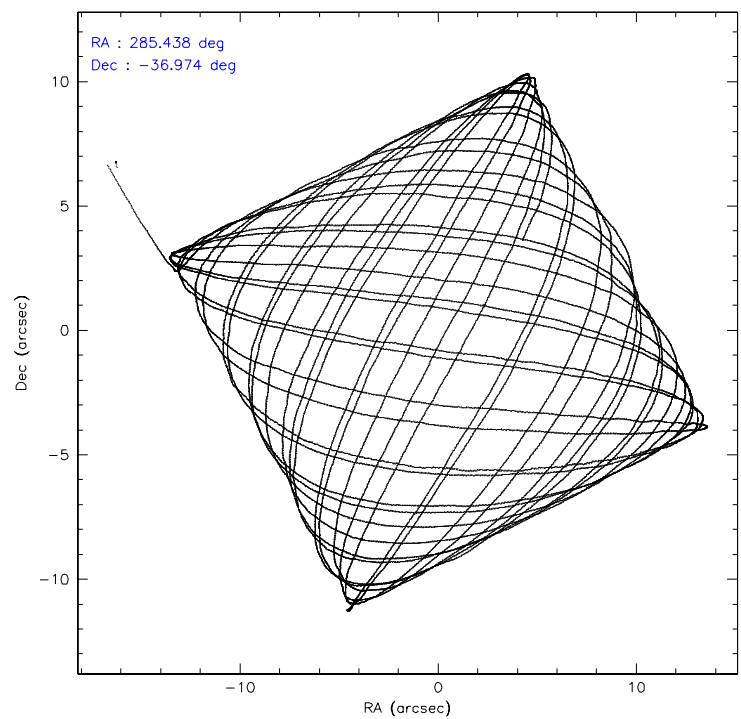
	ccd 0	ccd 1	ccd 2	ccd 3	ccd 6	ccd 7
level 1 events	106820	108946	115784	115622	120558	166116
rejected events	88339	92464	100824	97547	104666	102344
rejected %	82%	84%	87%	84%	86%	61%

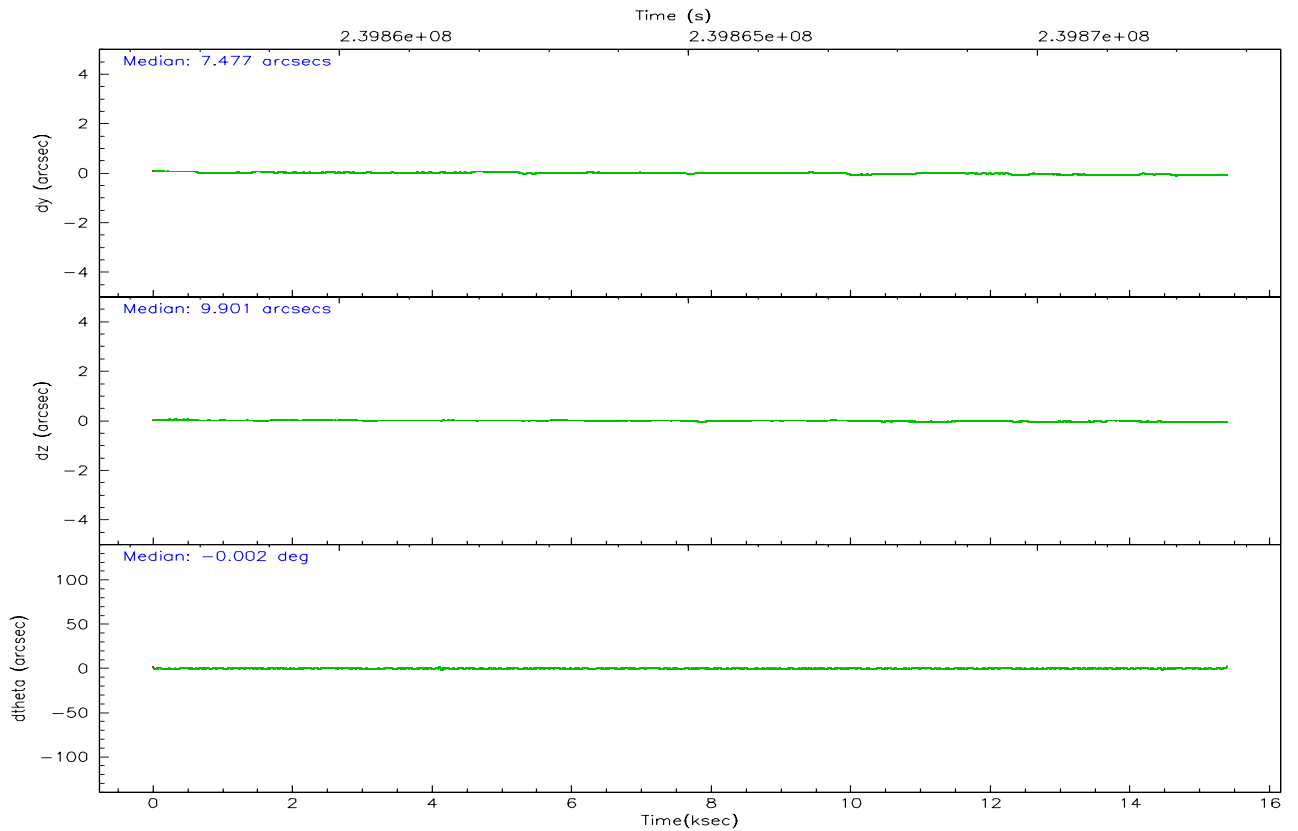
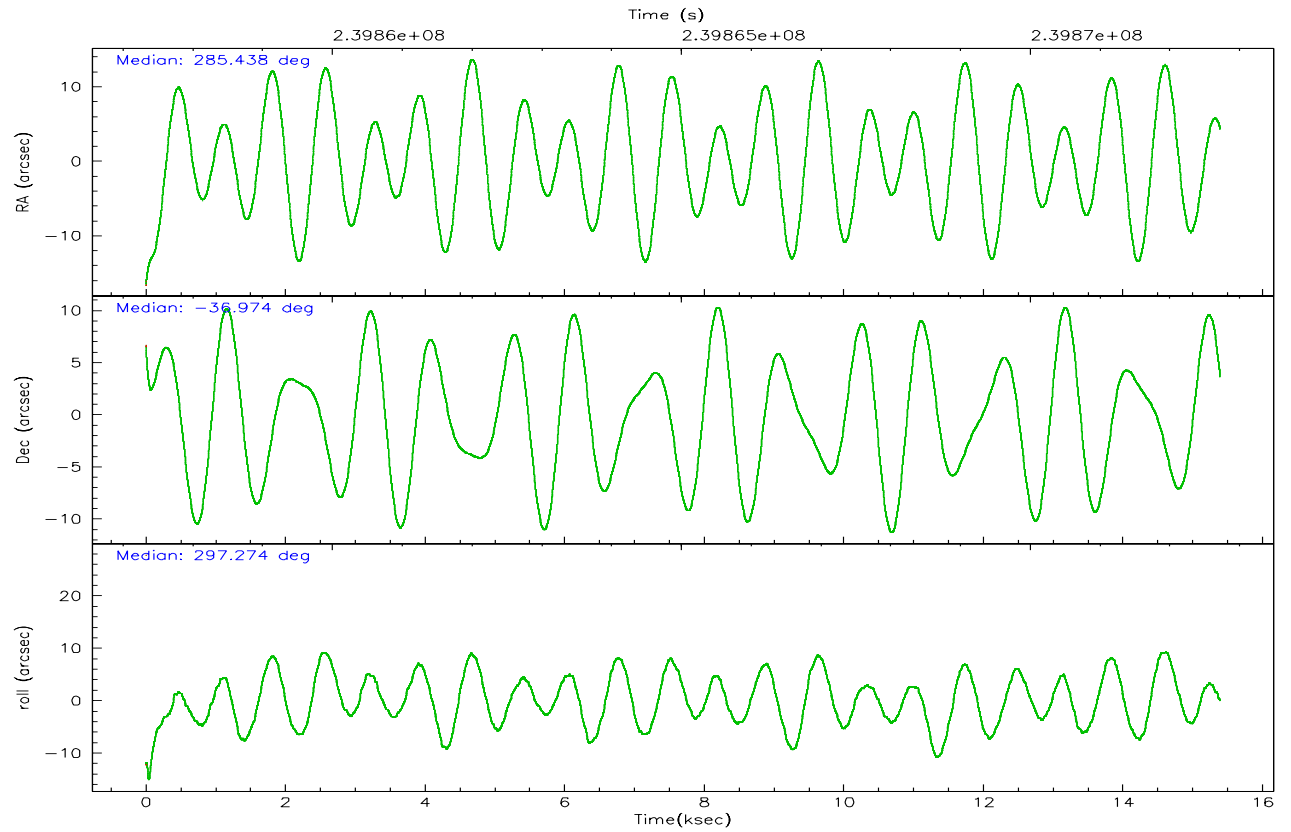
	ccd 0	ccd 1	ccd 2	ccd 3	ccd 6	ccd 7
grade 0 events	10330	7930	7897	10303	7615	4099
	9%	7%	6%	8%	6%	2%
grade 1 events	223	64	79	118	62	85
	0%	0%	0%	0%	0%	0%
grade 2 events	3481	3674	3005	3269	3411	16205
	3%	3%	2%	2%	2%	9%
grade 3 events	1513	1462	1332	1451	1454	3304
	1%	1%	1%	1%	1%	1%
grade 4 events	1492	1484	1309	1515	1388	3294
	1%	1%	1%	1%	1%	1%
grade 5 events	4663	5038	4597	5270	5691	10299
	4%	4%	3%	4%	4%	6%
grade 6 events	2604	2939	2372	2573	3000	40858
	2%	2%	2%	2%	2%	24%
grade 7 events	82514	86355	95193	91123	97937	87972
	77%	79%	82%	78%	81%	52%

## 2.2 Compared Parameters

Parameter	Planned	Actual	Parameter	Planned	Actual
Instrument	ACIS	ACIS	Obspar format version number	6	6
Detector	ACIS-012367	ACIS-012367	Obspar file type	PREDICTED	ACTUAL
Grating	NONE	NONE	Obspar update status	NONE	UPDATED
Data mode	FAINT	FAINT	On-chip summing requested	N	N
Observation mode	POINTING	POINTING	Subarray requested	NONE	NONE
Pointing RA	285.409031	285.4379164281505	Alternating exposures requested	N	N
Pointing Dec	-36.959085	-36.97373062813669	Primary exposure time	0.000000	3.2
Pointing Roll	297.057917	297.2839815560865			
SIM focus pos (mm)	-0.782348	-0.7809083437167272			
SIM defocus (mm)	0	0.001439871863259334			
SIM translation stage pos (mm)	-233.592463	-233.5874344608287			
SIM translation stage offset (mm)	0	-0.005018542100998502			
Observation start time	239857490.184000	239855872.92267			
Observation start date	2005-08-08T03:03:46	2005-08-08T02:37:52			
Observation end time	239872720.184000	239873591.07348			
Observation end date	2005-08-08T07:17:36	2005-08-08T07:33:11			
Read mode	TIMED	TIMED			

## 2.3 Aspect





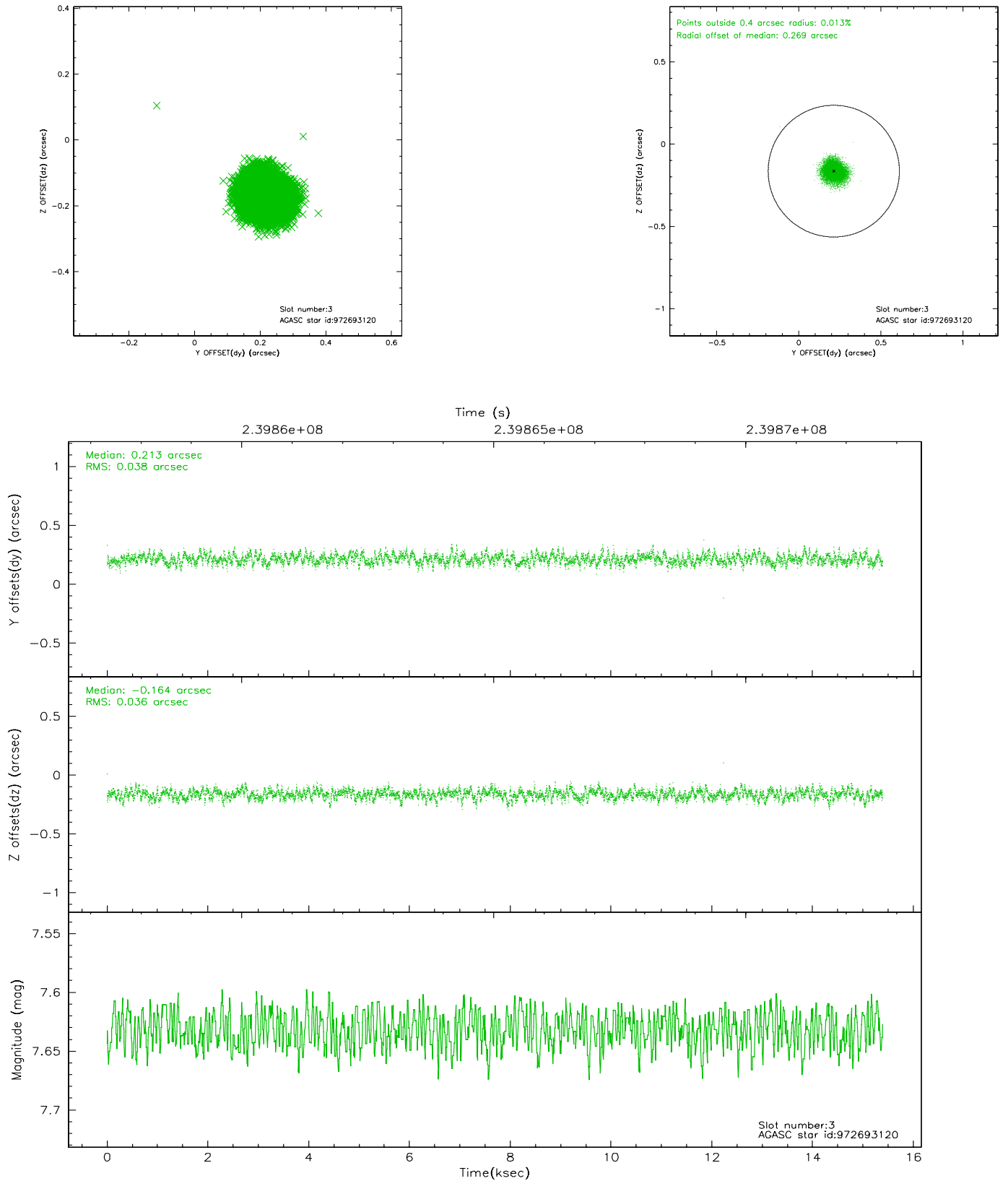
### Slot Statistics

slot	status	id	mag	n_pts	med_dy	med_dz	dr1	dr2	ra	dec	mean_y	mean_z
0	FID	ACIS-I-1	7.25	3755	-0.010	0.040	0.006	0.011	0.000000	0.000000	932.19	-833.32
1	FID	ACIS-I-5	7.23	3754	-0.141	0.020	0.006	0.011	0.000000	0.000000	-1815.90	1063.99
2	FID	ACIS-I-6	7.26	3754	0.059	0.010	0.007	0.011	0.000000	0.000000	397.48	1708.82
3	GUIDE	972693120	7.63	7509	0.213	-0.164	0.056	0.089	285.412210	-36.890704	-214.32	119.92
4	GUIDE	972694056	7.02	7509	-0.102	-0.005	0.051	0.082	285.682787	-36.657985	-604.47	1196.53
5	GUIDE	1037567144	8.74	7503	-0.033	0.051	0.068	0.109	284.940440	-37.605390	1467.93	-2249.65
6	GUIDE	972689192	8.92	7489	-0.077	0.031	0.081	0.130	284.589186	-37.133486	-501.11	-2386.00
7	GUIDE	972816680	9.15	7489	0.000	0.087	0.088	0.143	286.054324	-36.904693	676.41	1740.37

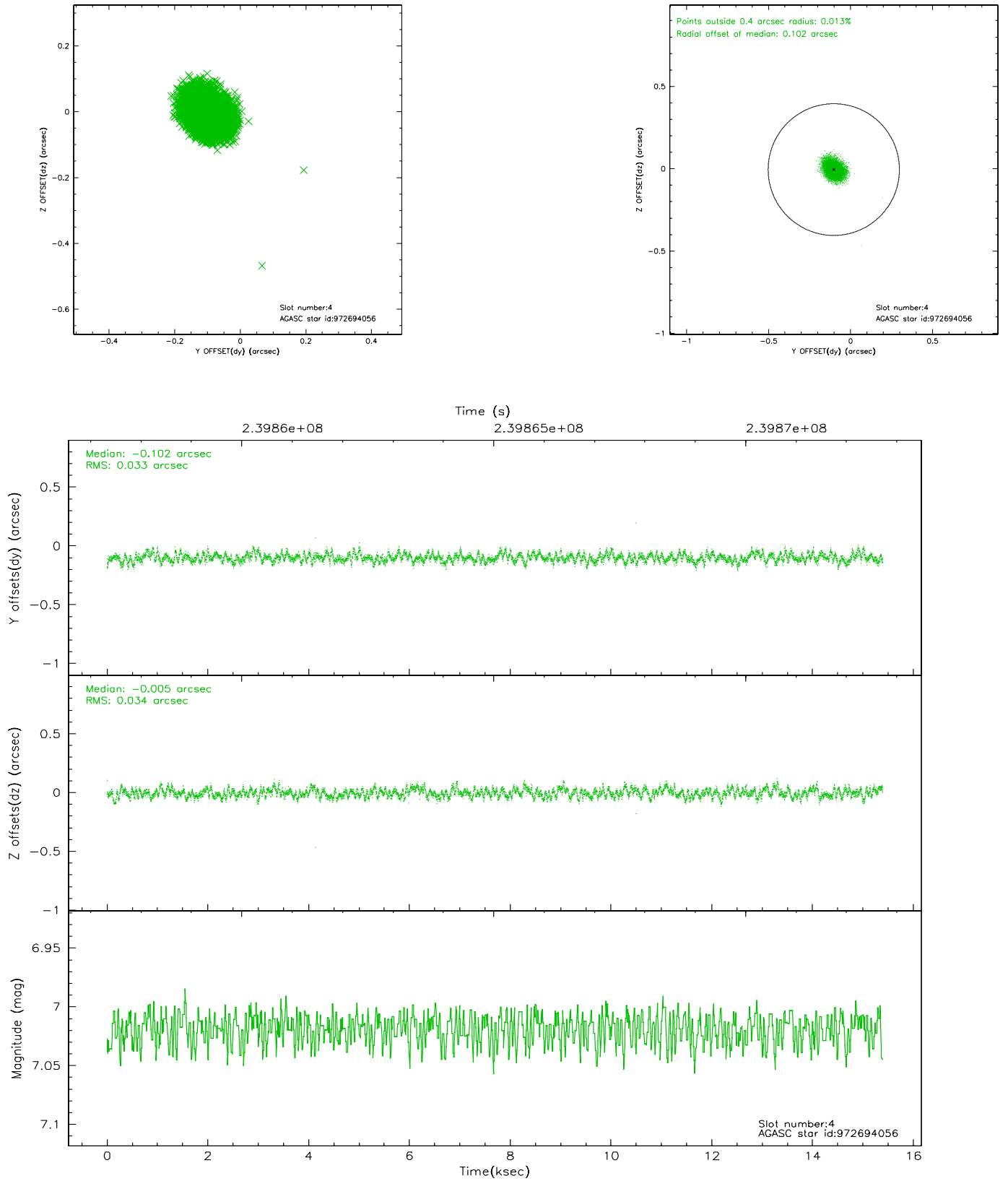


## 2.4 Star Slots

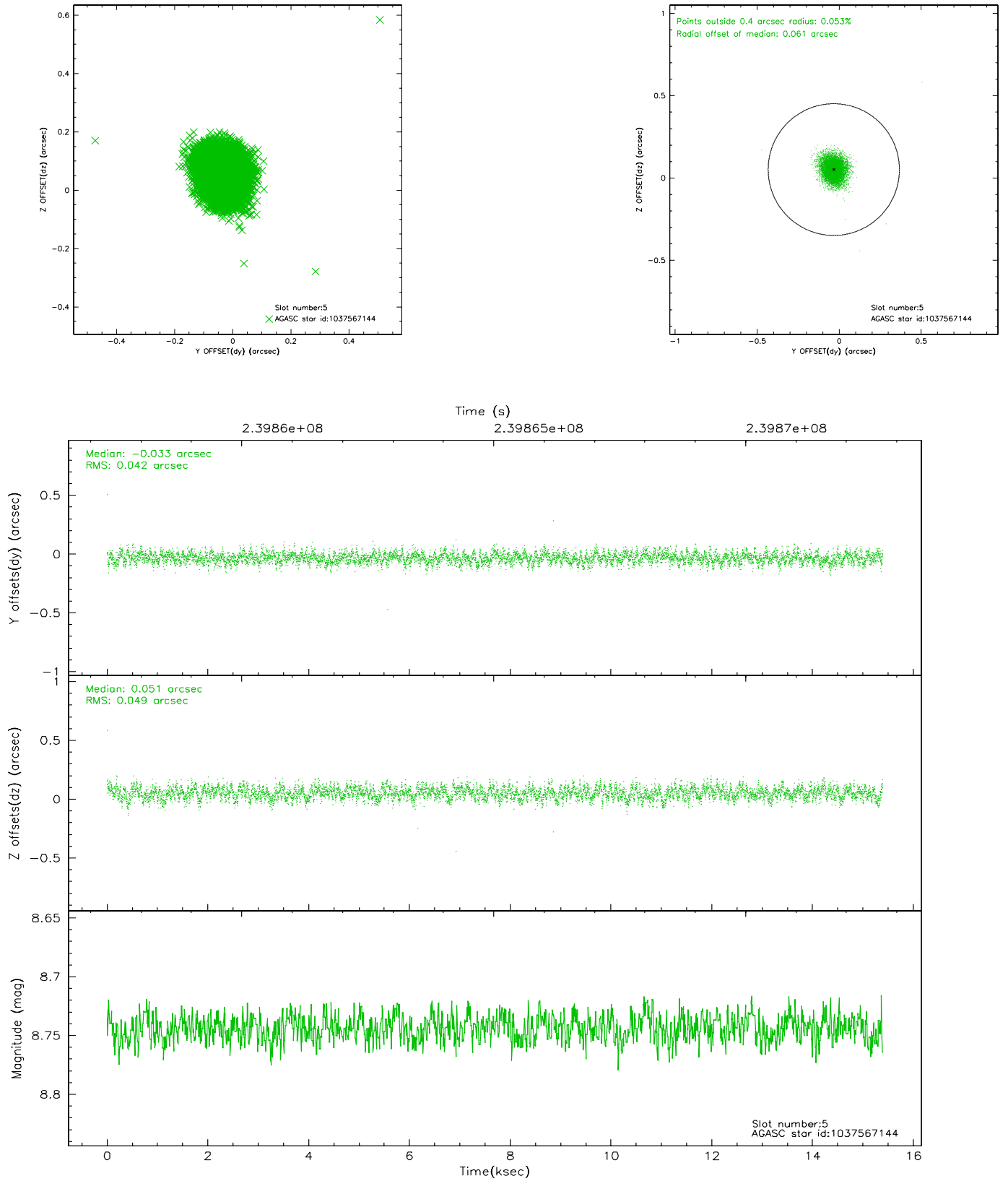
### 2.4.1 Slot 3



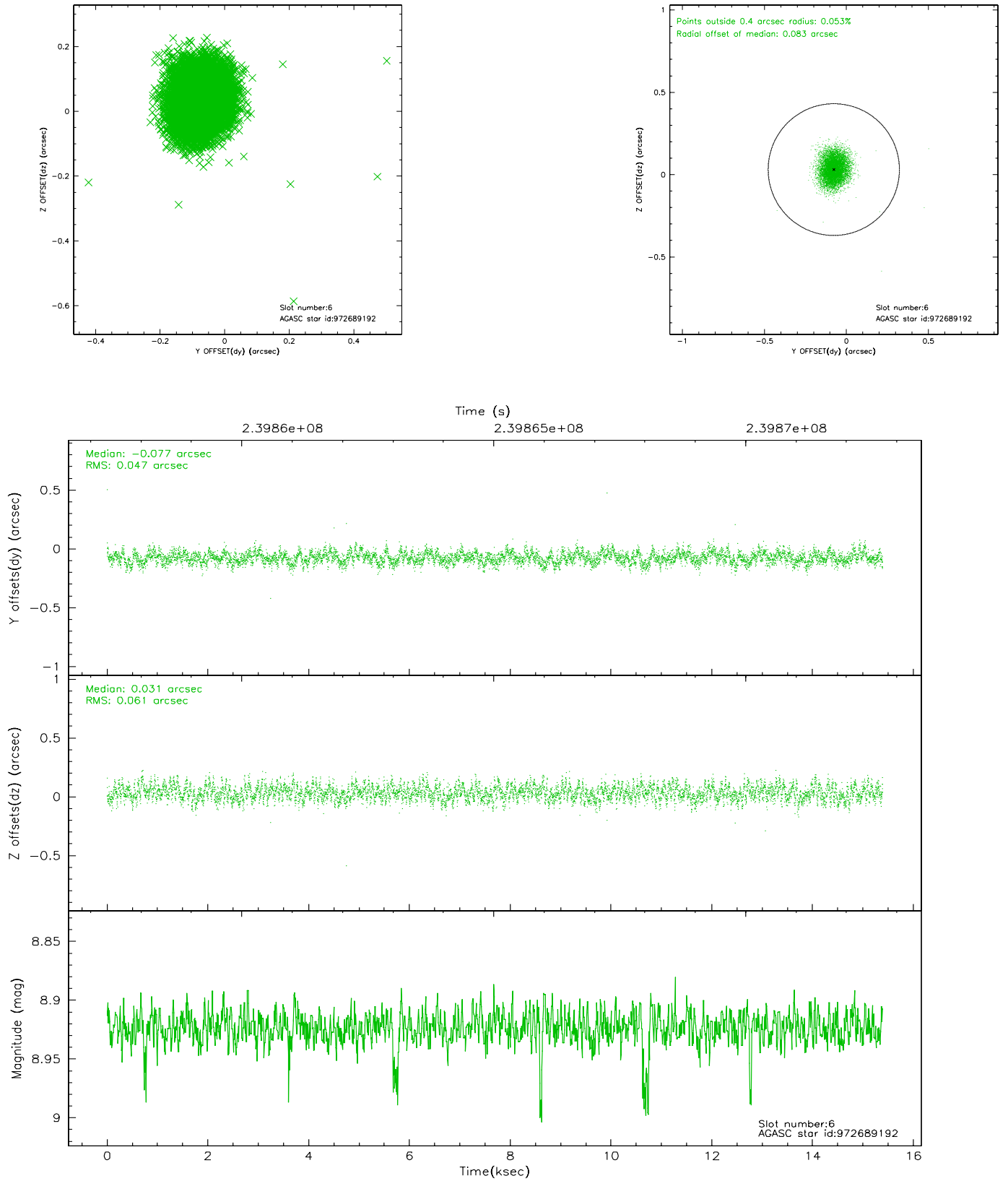
## 2.4.2 Slot 4



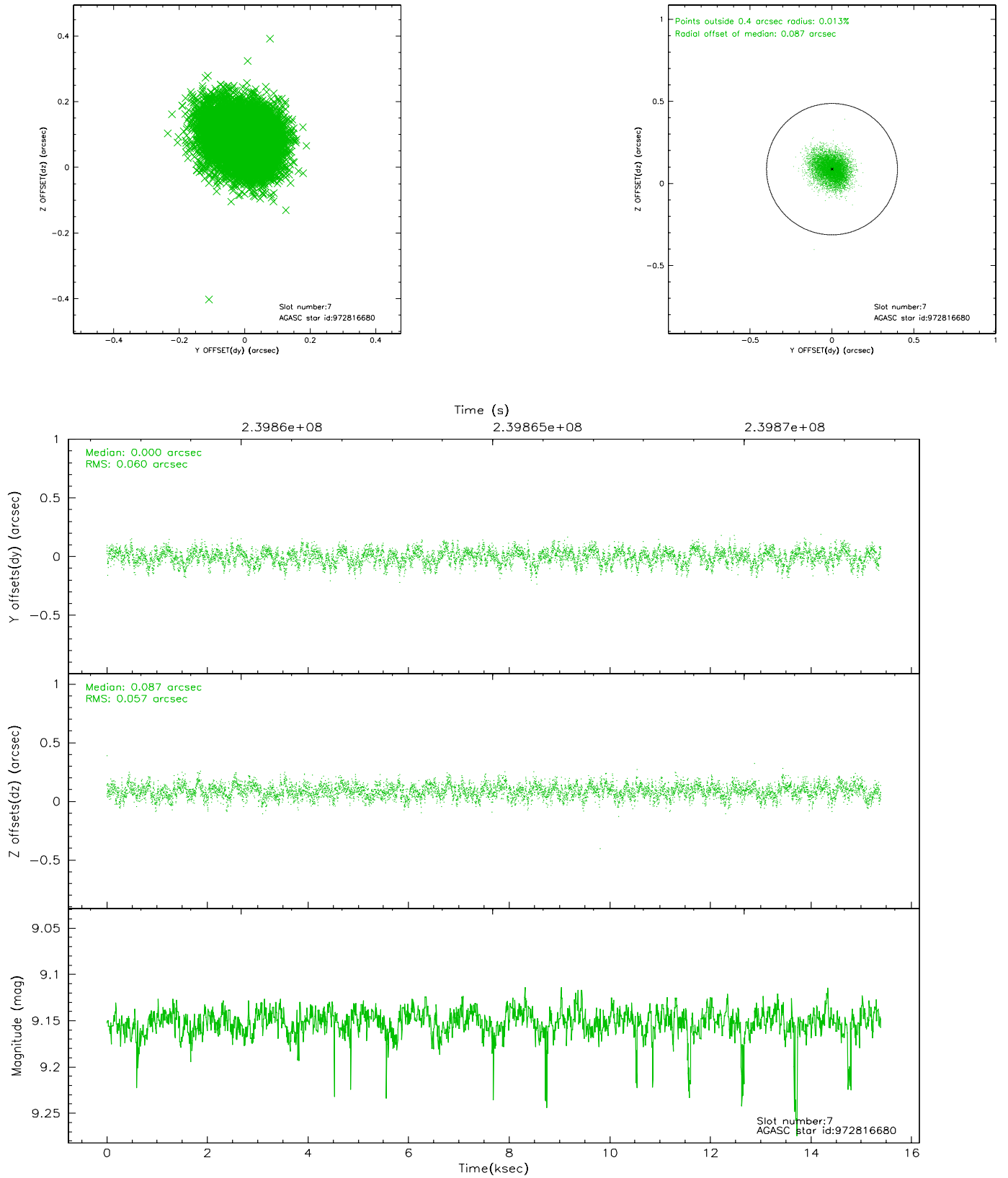
### 2.4.3 Slot 5



## 2.4.4 Slot 6

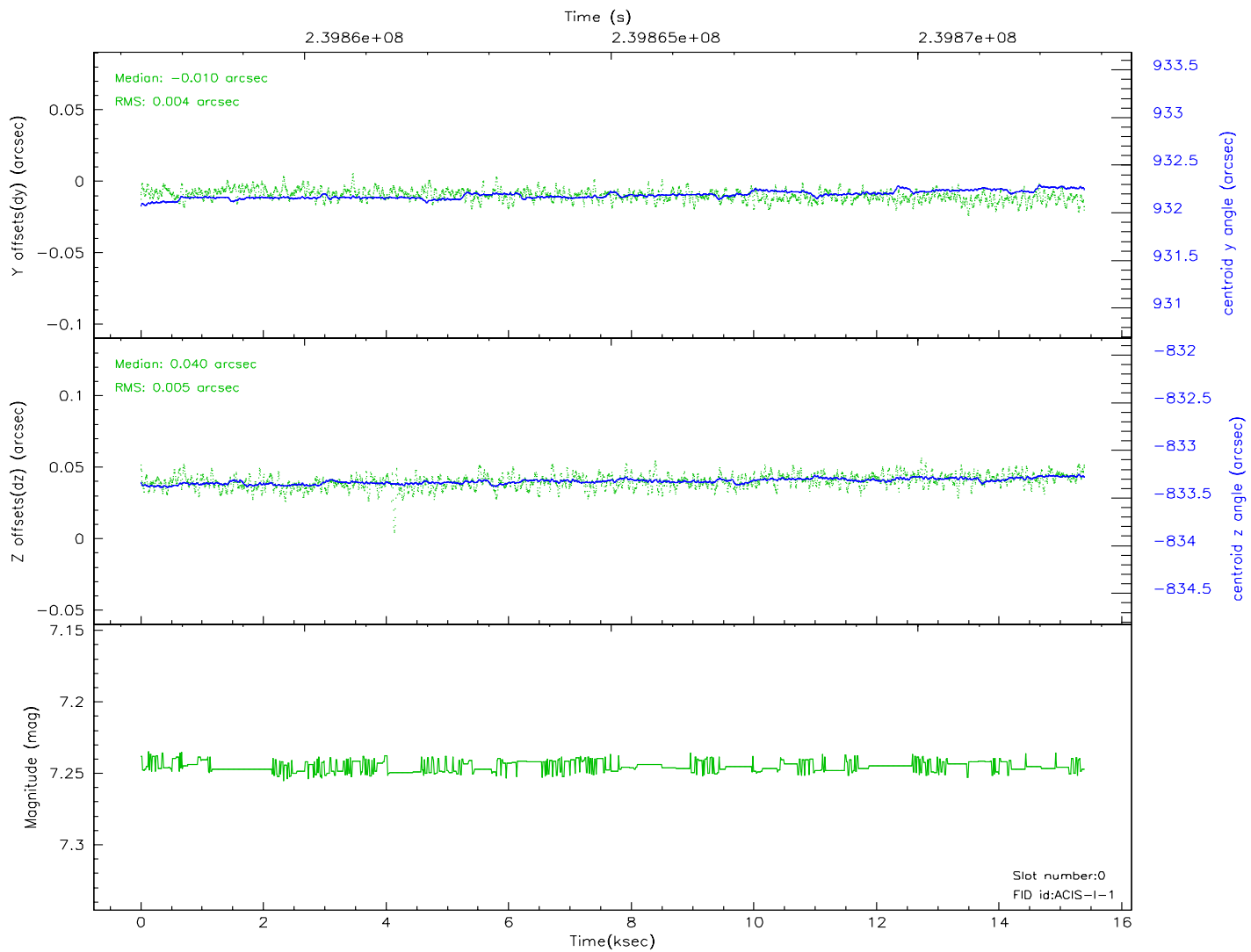
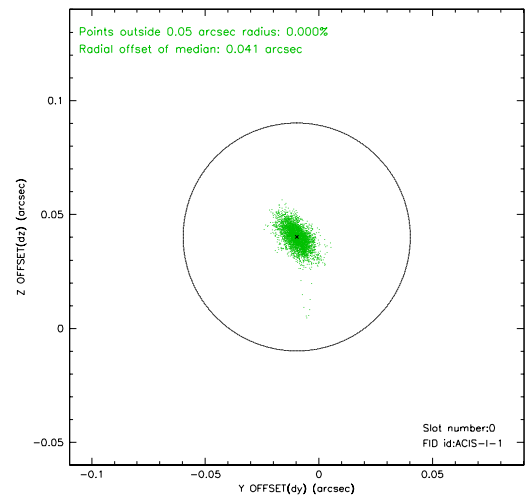
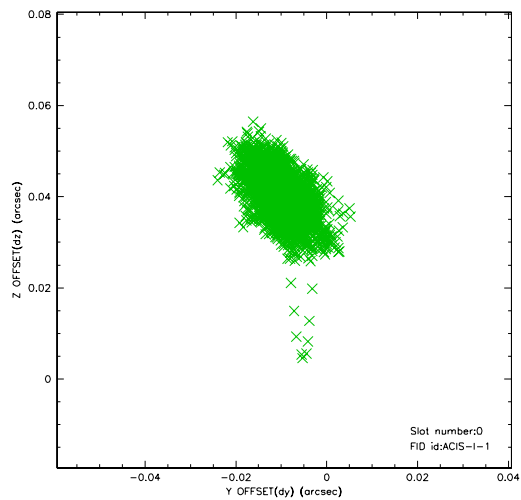


## 2.4.5 Slot 7

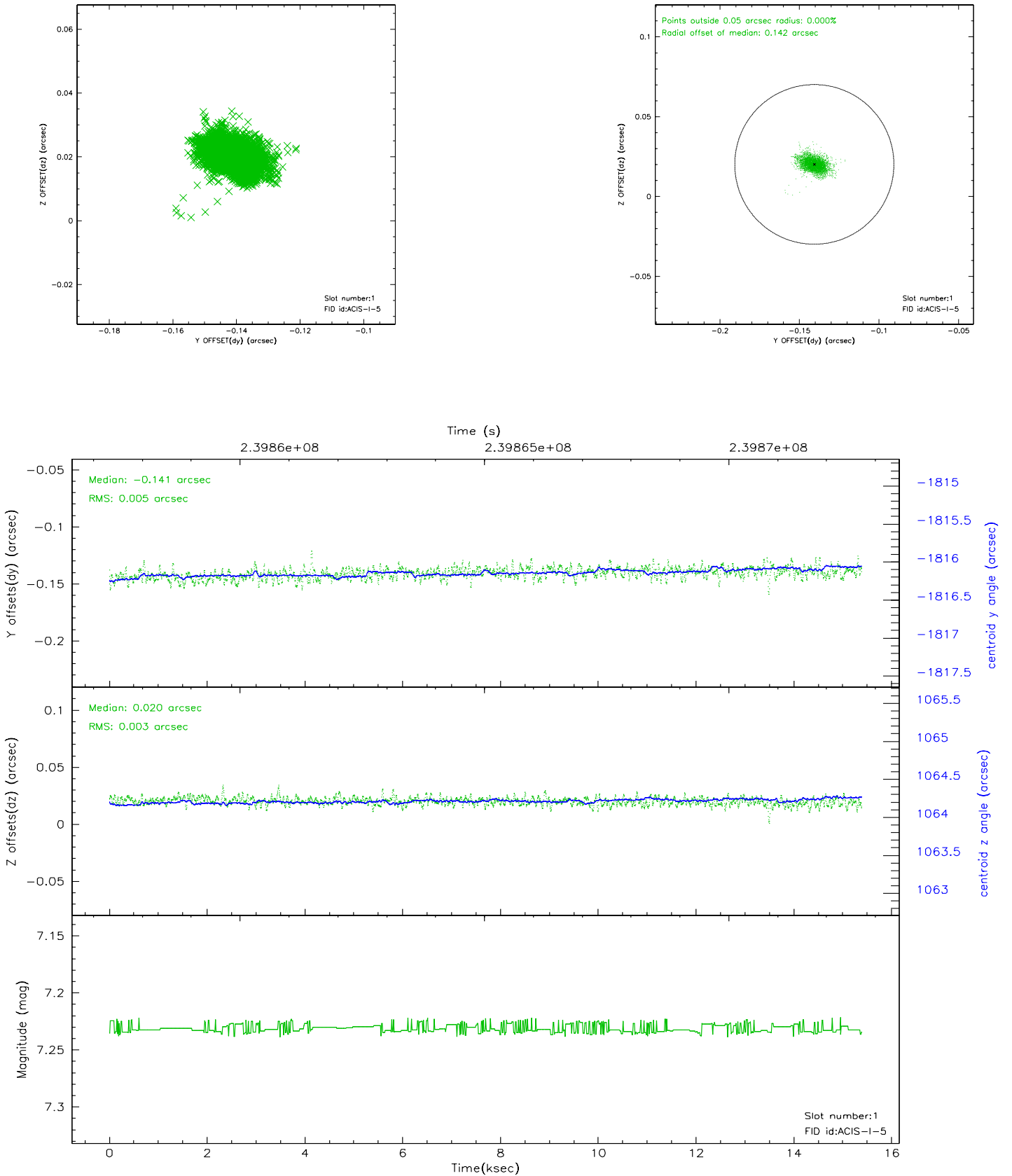


## 2.5 FID Slots

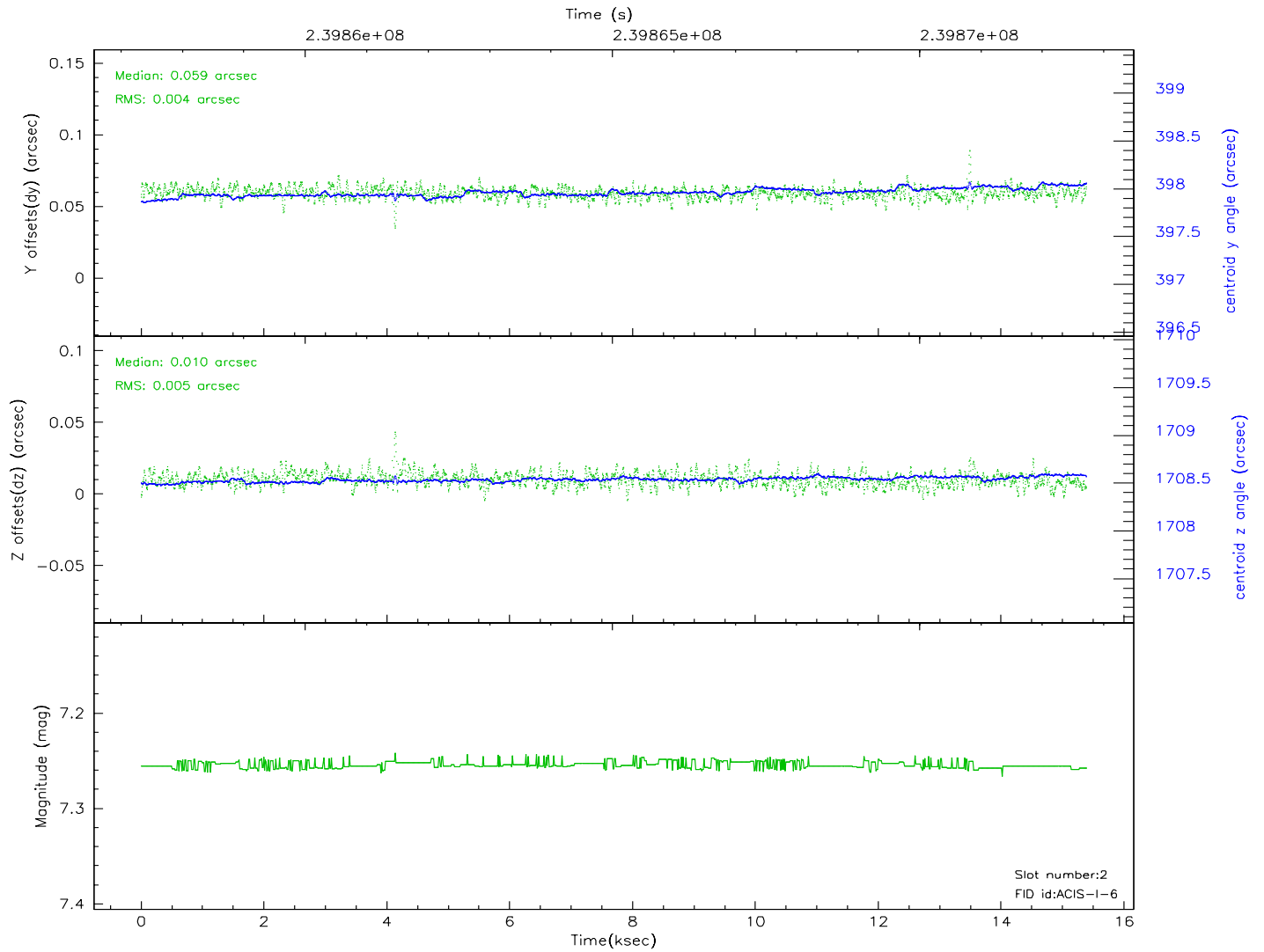
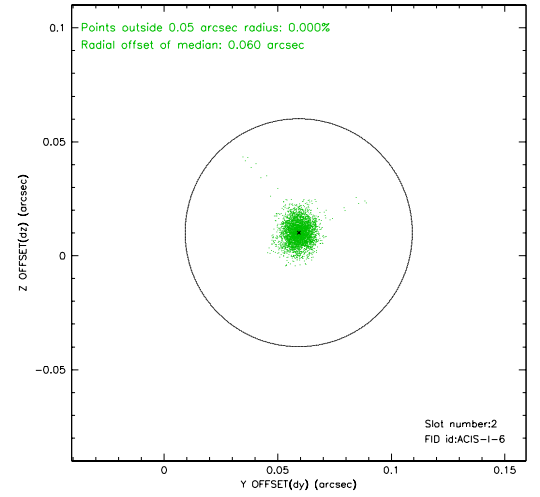
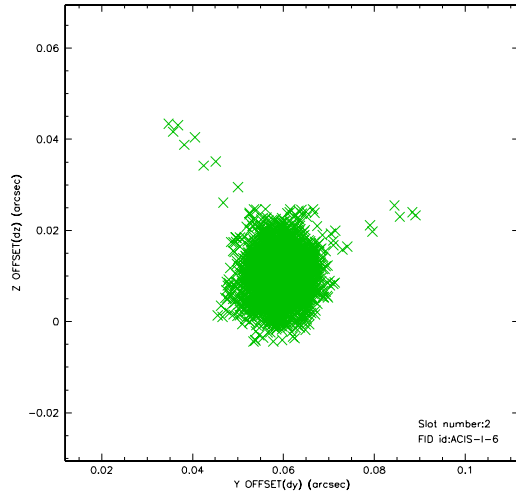
### 2.5.1 Slot 0



## 2.5.2 Slot 1

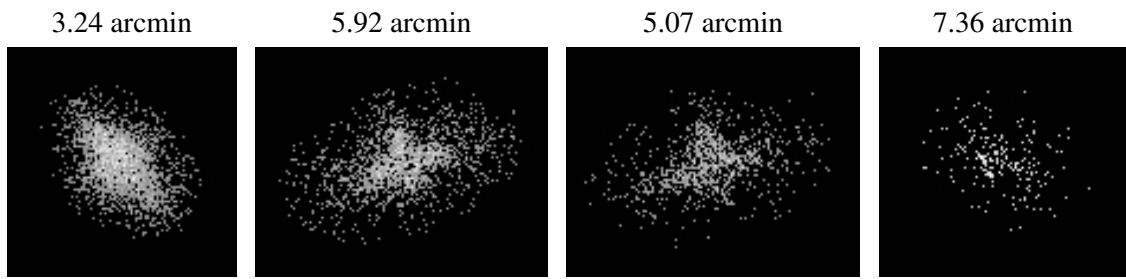


### 2.5.3 Slot 2





### 3 Point Sources



## A Summary

### A.1 Status

V&V Scientist	Doug Morgan
V&V Date (YYYY-MM-DD)	2006.03.20
V&V Edition	1
V&V Disposition and Status	OK
V&V Charge Time	15.3856

### A.2 Comments