

V&V Reference Report

L2 ASCDS Version : 7.6.7.1

Observation 5392 - L2 Version 004
Chandra X-Ray Center

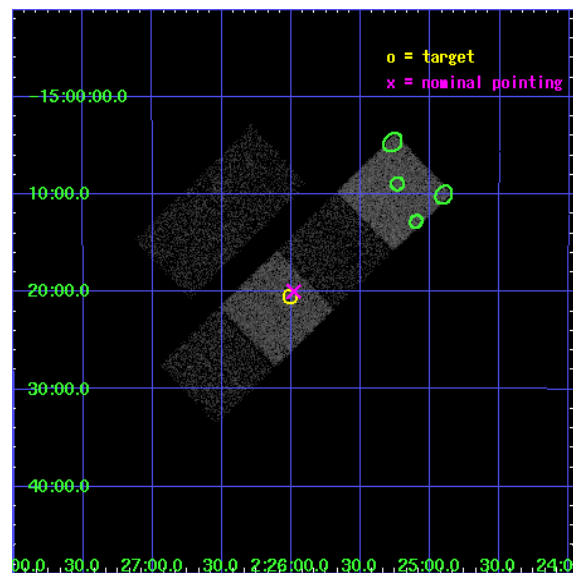
L2 Processing Date : Mar 22 2006

Contents

| | | |
|----------|-------------------------------|-----------|
| 1 | Front | 2 |
| 2 | OBI | 3 |
| 2.1 | OBI | 3 |
| 2.1.1 | Images | 3 |
| 2.1.2 | Bias | 3 |
| 2.1.3 | Parameters | 4 |
| 2.1.4 | Events | 4 |
| 2.2 | Compared Parameters | 5 |
| 2.3 | Aspect | 6 |
| 2.4 | Star Slots | 9 |
| 2.4.1 | Slot 3 | 9 |
| 2.4.2 | Slot 4 | 10 |
| 2.4.3 | Slot 5 | 11 |
| 2.4.4 | Slot 6 | 12 |
| 2.5 | FID Slots | 13 |
| 2.5.1 | Slot 0 | 13 |
| 2.5.2 | Slot 1 | 14 |
| 2.5.3 | Slot 2 | 15 |
| 3 | Point Sources | 16 |
| A | Summary | 17 |
| A.1 | Status | 17 |
| A.2 | Comments | 17 |

1 Front

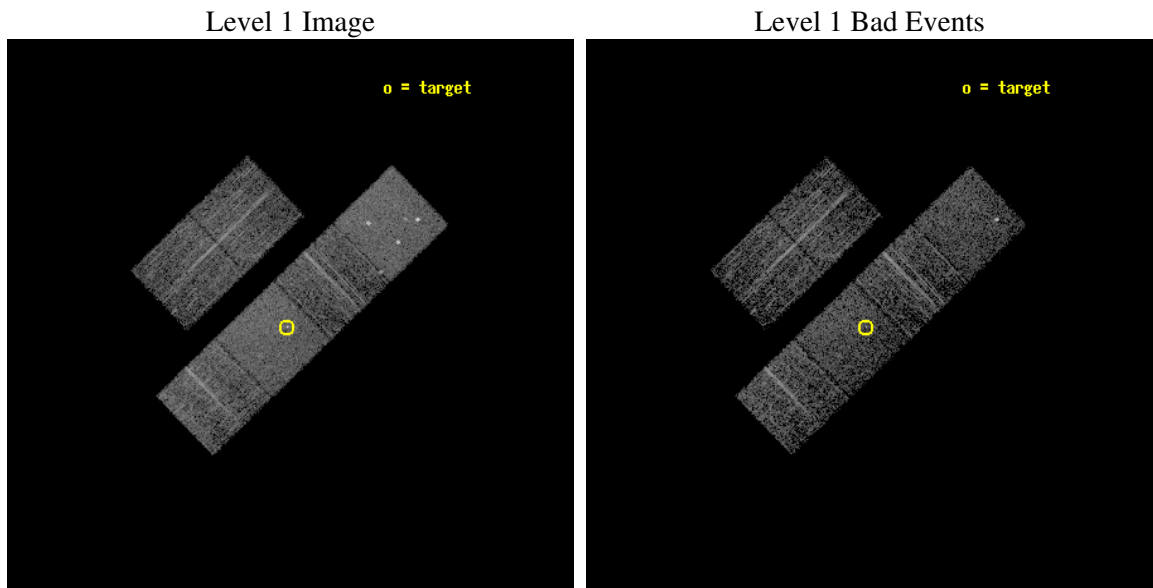
| | |
|----------|---|
| seq_num | 200327 |
| obs_id | 5392 |
| title | The puzzle of X-ray emission from magnetic stars without convective envelopes |
| observer | Prof. J rgen Schmitt |
| object | HD 15144 |
| dtcycle | 0 |
| cycle | P |
| ra_targ | 36.50125 |
| dec_targ | -15.34125 |
| ra_nom | 36.495378277732 |
| dec_nom | -15.333268437419 |
| roll_nom | 135.93610305473 |
| revision | 4 |
| ontime | 2956.7999889851 |
| livetime | 2919.3592071533 |
| ontime2 | 2956.7999889851 |
| ontime3 | 2956.7999889851 |
| ontime5 | 2956.7999889851 |
| ontime6 | 2956.7999889851 |
| ontime7 | 2956.7999889851 |
| ontime8 | 2956.7999889851 |
| l2events | 35613 |



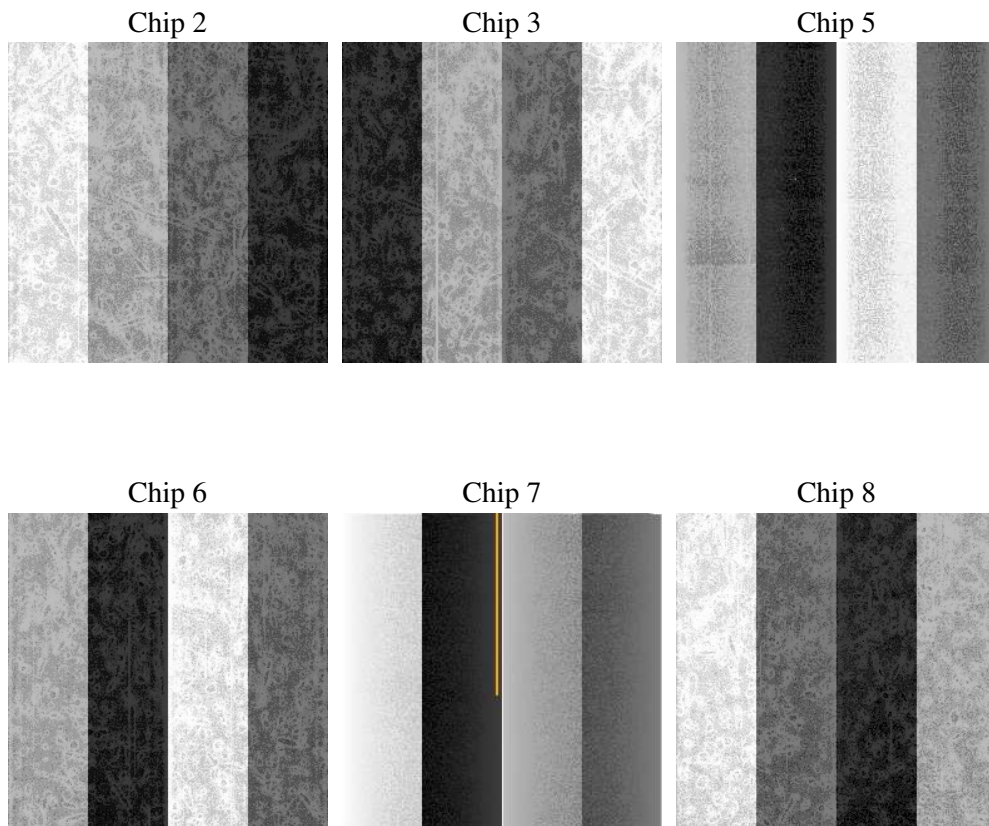
2 OBI

2.1 OBI

2.1.1 Images



2.1.2 Bias



2.1.3 Parameters

| | |
|----------|---------------------|
| obi_num | 0 |
| ascdsver | 7.6.7.1 |
| caldsver | 3.2.1 |
| date | 2006-03-22T20:21:48 |
| revision | 4 |

| | |
|----------------|-----------------|
| sched_exp_time | 3000.000000 |
| ontime | 2962.2750054002 |
| ontime2 | 2962.2750054002 |
| ontime3 | 2962.2749754488 |
| ontime5 | 2962.2750054002 |
| ontime6 | 2962.2750054002 |
| ontime7 | 2962.2750054002 |
| ontime8 | 2962.2749754488 |
| l1events | 165439 |

2.1.4 Events

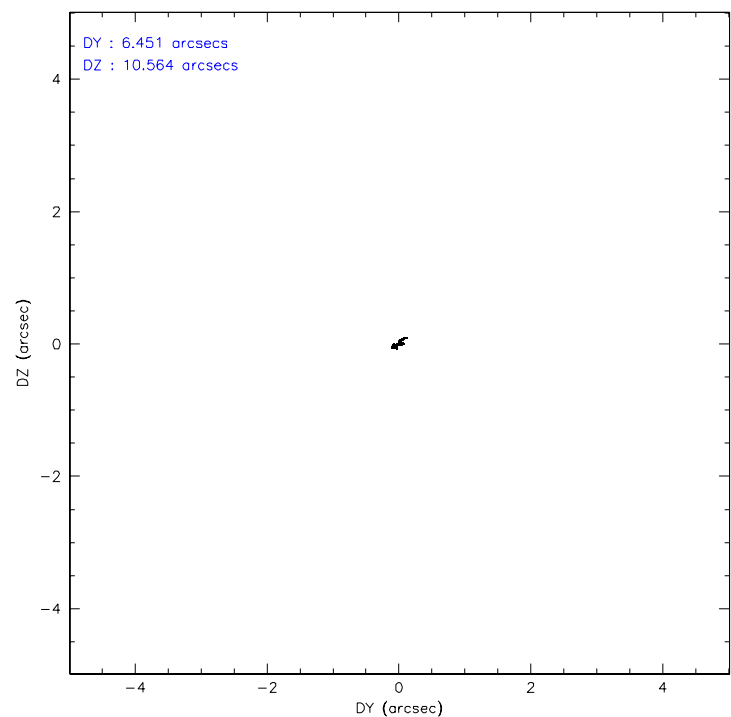
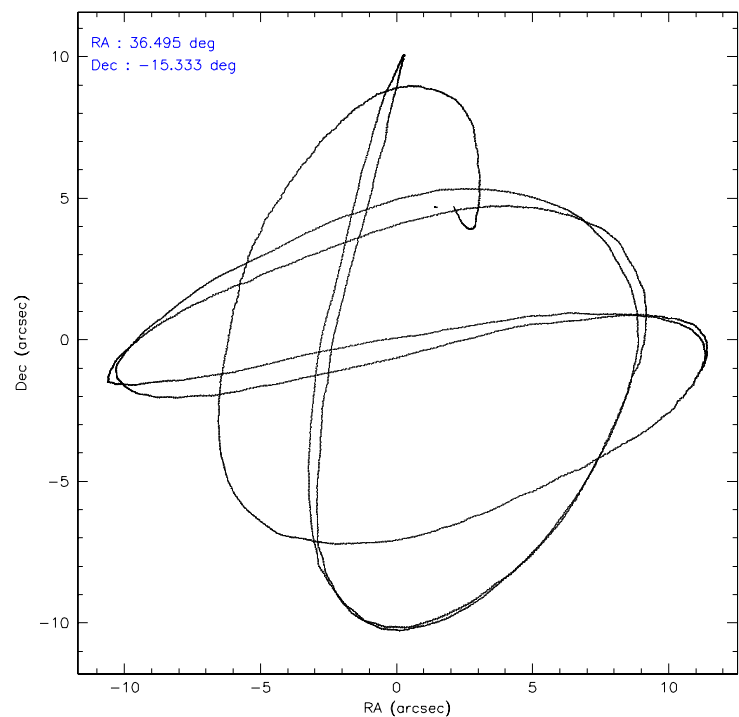
| | ccd 2 | ccd 3 | ccd 5 | ccd 6 | ccd 7 | ccd 8 |
|-----------------|-------|-------|-------|-------|-------|-------|
| level 1 events | 23798 | 22704 | 35418 | 23813 | 31032 | 28674 |
| rejected events | 21082 | 20055 | 19192 | 21154 | 18943 | 22135 |
| rejected % | 88% | 88% | 54% | 88% | 61% | 77% |

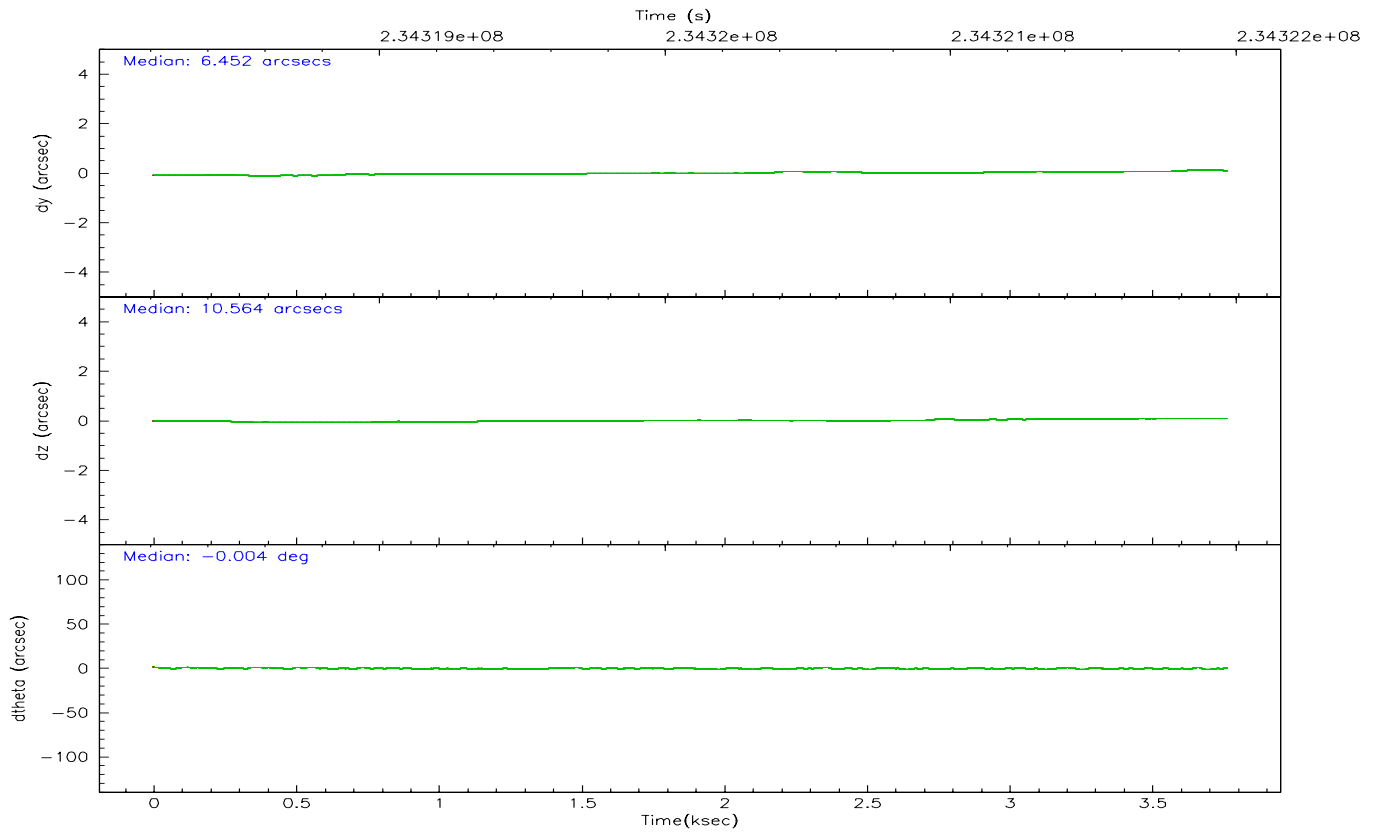
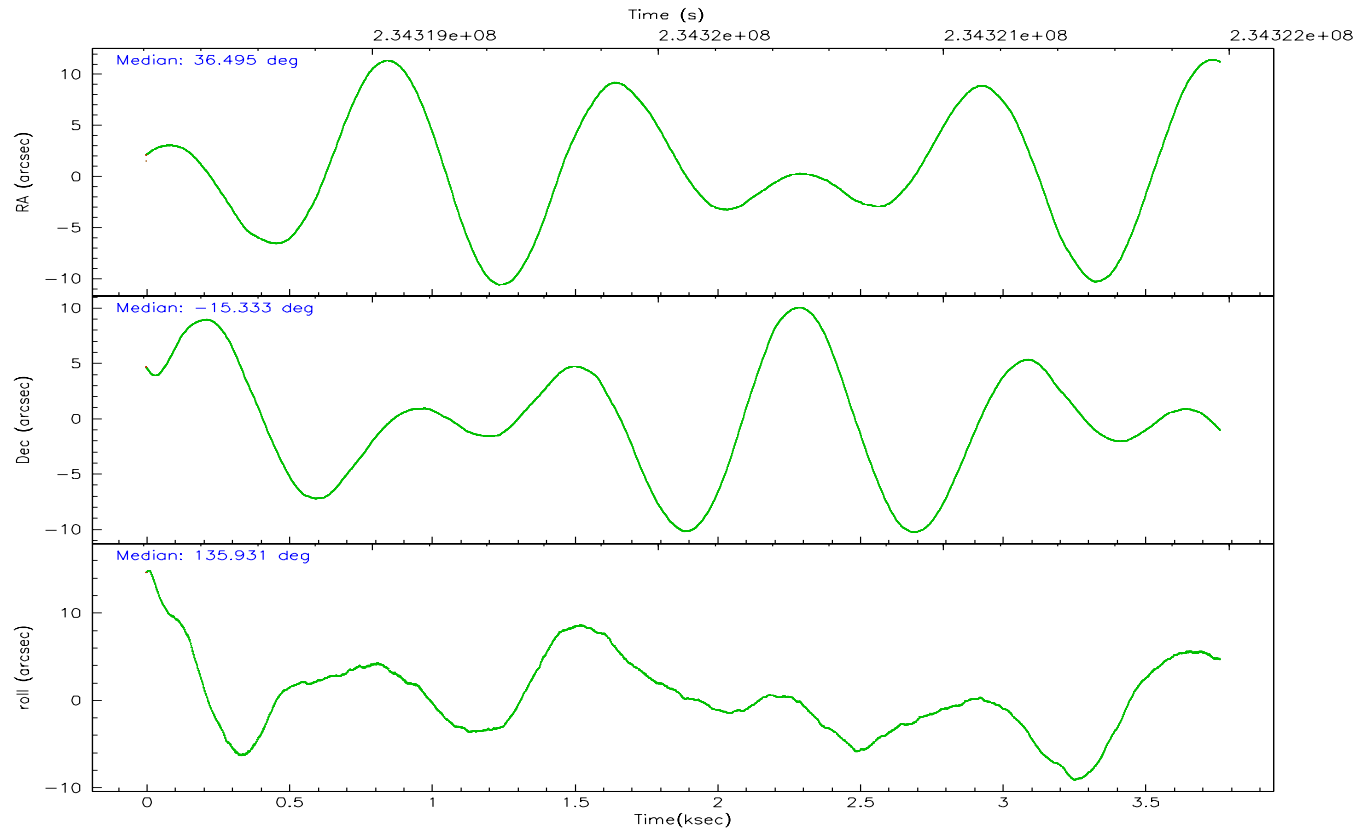
| | ccd 2 | ccd 3 | ccd 5 | ccd 6 | ccd 7 | ccd 8 |
|----------------|-------|-------|-------|-------|-------|-------|
| grade 0 events | 1219 | 1154 | 2137 | 1016 | 792 | 2020 |
| | 5% | 5% | 6% | 4% | 2% | 7% |
| grade 1 events | 16 | 16 | 52 | 3 | 29 | 18 |
| | 0% | 0% | 0% | 0% | 0% | 0% |
| grade 2 events | 561 | 500 | 4856 | 594 | 3036 | 1525 |
| | 2% | 2% | 13% | 2% | 9% | 5% |
| grade 3 events | 257 | 249 | 361 | 239 | 624 | 643 |
| | 1% | 1% | 1% | 1% | 2% | 2% |
| grade 4 events | 253 | 274 | 303 | 251 | 555 | 624 |
| | 1% | 1% | 0% | 1% | 1% | 2% |
| grade 5 events | 926 | 1069 | 1716 | 1050 | 1998 | 1337 |
| | 3% | 4% | 4% | 4% | 6% | 4% |
| grade 6 events | 429 | 476 | 8584 | 560 | 7093 | 1729 |
| | 1% | 2% | 24% | 2% | 22% | 6% |
| grade 7 events | 20137 | 18966 | 17409 | 20100 | 16905 | 20778 |
| | 84% | 83% | 49% | 84% | 54% | 72% |

2.2 Compared Parameters

| Parameter | Planned | Actual | Parameter | Planned | Actual |
|-----------------------------------|---------------------|----------------------|---------------------------------|-----------|---------|
| Instrument | ACIS | ACIS | Obspar format version number | 6 | 6 |
| Detector | ACIS-235678 | ACIS-235678 | Obspar file type | PREDICTED | ACTUAL |
| Grating | NONE | NONE | Obspar update status | NONE | UPDATED |
| Data mode | FAINT | FAINT | On-chip summing requested | N | N |
| Observation mode | POINTING | POINTING | Subarray requested | NONE | NONE |
| Pointing RA | 36.522861 | 36.49537827773188 | Alternating exposures requested | N | N |
| Pointing Dec | -15.339665 | -15.33326843741855 | Primary exposure time | 0.000000 | 3.2 |
| Pointing Roll | 135.786742 | 135.9361030547326 | | | |
| SIM focus pos (mm) | -0.684267 | -0.6828225247311905 | | | |
| SIM defocus (mm) | 0 | 0.001444936568705701 | | | |
| SIM translation stage pos (mm) | -190.132523 | -190.1425803651734 | | | |
| SIM translation stage offset (mm) | 0 | 0.01005778216563158 | | | |
| Observation start time | 234318969.184000 | 234317718.23193 | | | |
| Observation start date | 2005-06-05T00:35:05 | 2005-06-05T00:15:18 | | | |
| Observation end time | 234321969.184000 | 234323077.95718 | | | |
| Observation end date | 2005-06-05T01:25:05 | 2005-06-05T01:44:37 | | | |
| Read mode | TIMED | TIMED | | | |

2.3 Aspect



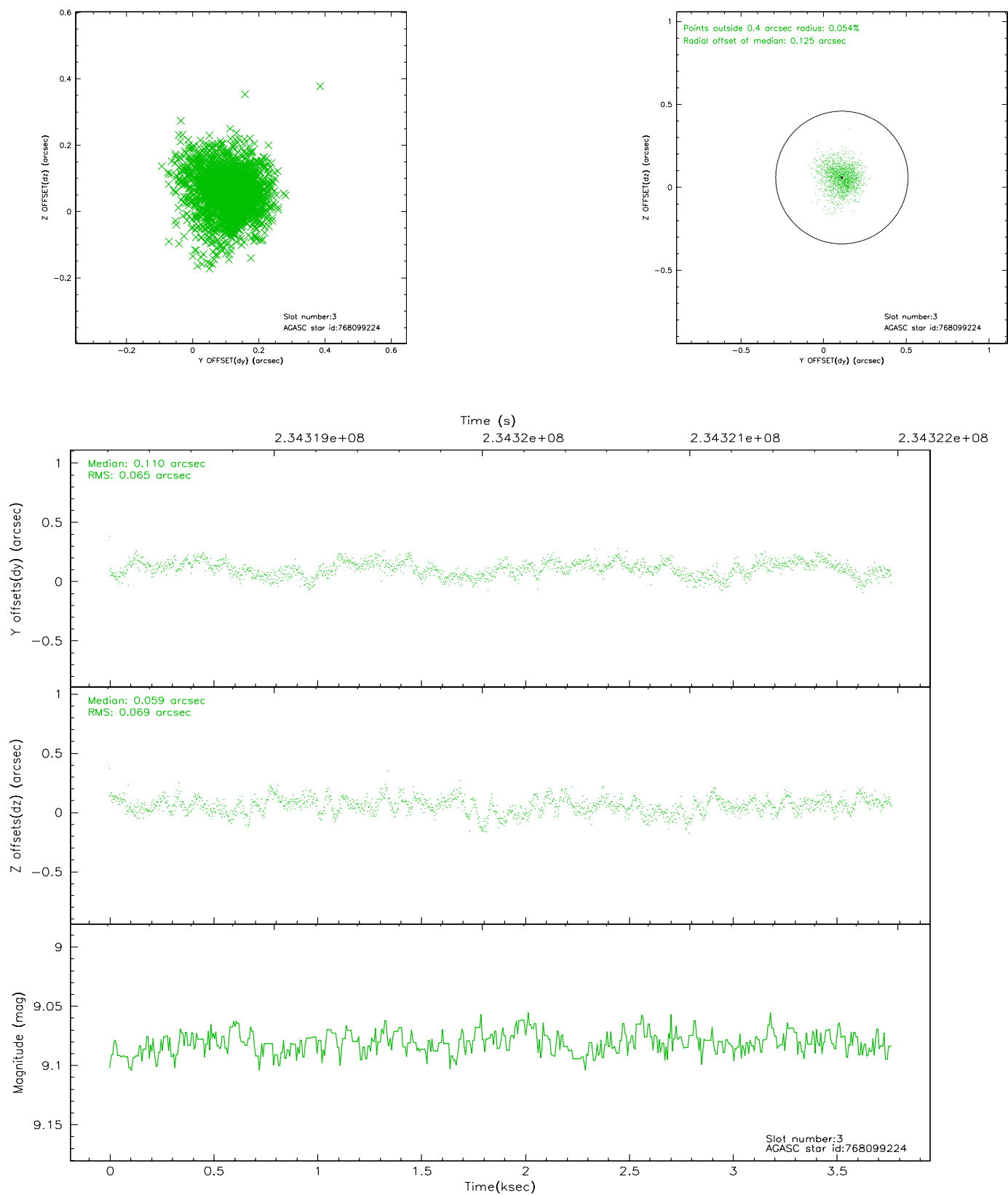


Slot Statistics

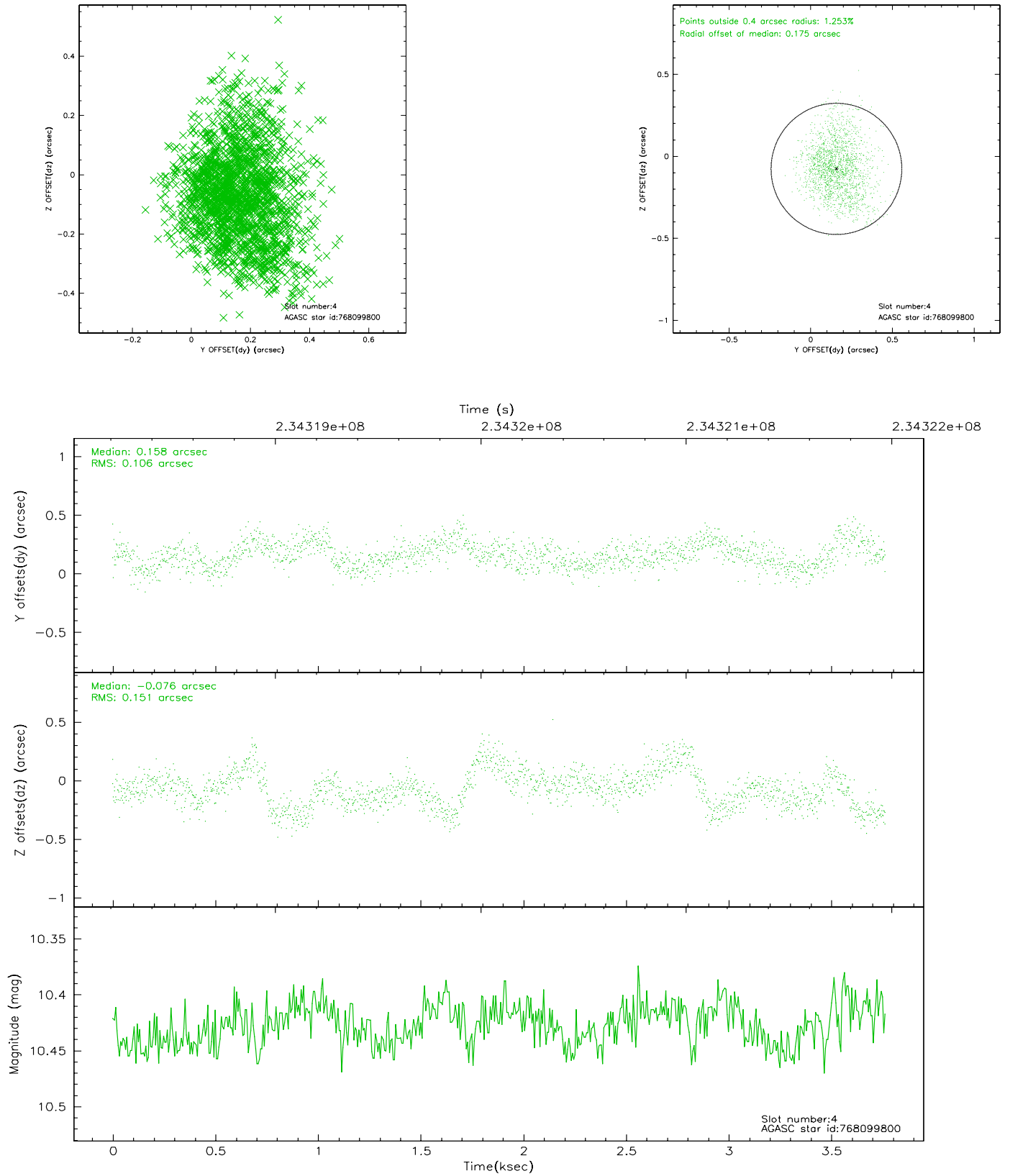
| slot | status | id | mag | n_pts | med_dy | med_dz | dr1 | dr2 | ra | dec | mean_y | mean_z |
|------|---------|-----------|-------|-------|--------|--------|-------|-------|-----------|------------|----------|----------|
| 0 | FID | ACIS-S-2 | 7.10 | 918 | -0.040 | -0.017 | 0.006 | 0.010 | 0.000000 | 0.000000 | -759.21 | -1731.81 |
| 1 | FID | ACIS-S-4 | 7.20 | 919 | 0.030 | 0.024 | 0.006 | 0.011 | 0.000000 | 0.000000 | 2153.37 | 175.02 |
| 2 | FID | ACIS-S-6 | 7.35 | 919 | -0.018 | 0.001 | 0.007 | 0.011 | 0.000000 | 0.000000 | 404.92 | 814.27 |
| 3 | GUIDE | 768099224 | 9.08 | 1836 | 0.110 | 0.059 | 0.100 | 0.162 | 37.197220 | -15.299441 | -1579.66 | -1733.72 |
| 4 | GUIDE | 768099800 | 10.43 | 1836 | 0.158 | -0.076 | 0.195 | 0.329 | 36.291049 | -15.196392 | 935.73 | 192.36 |
| 5 | GUIDE | 768102400 | 9.81 | 1834 | -0.096 | 0.216 | 0.109 | 0.178 | 36.805499 | -15.028625 | 76.64 | -1486.59 |
| 6 | GUIDE | 767967160 | 9.86 | 1834 | -0.171 | -0.198 | 0.129 | 0.210 | 35.745534 | -15.541992 | 1420.88 | 2405.21 |
| 7 | OMITTED | | 0.00 | 0 | 0.000 | 0.000 | 0.000 | 0.000 | 0.000000 | 0.000000 | 0.00 | 0.00 |

2.4 Star Slots

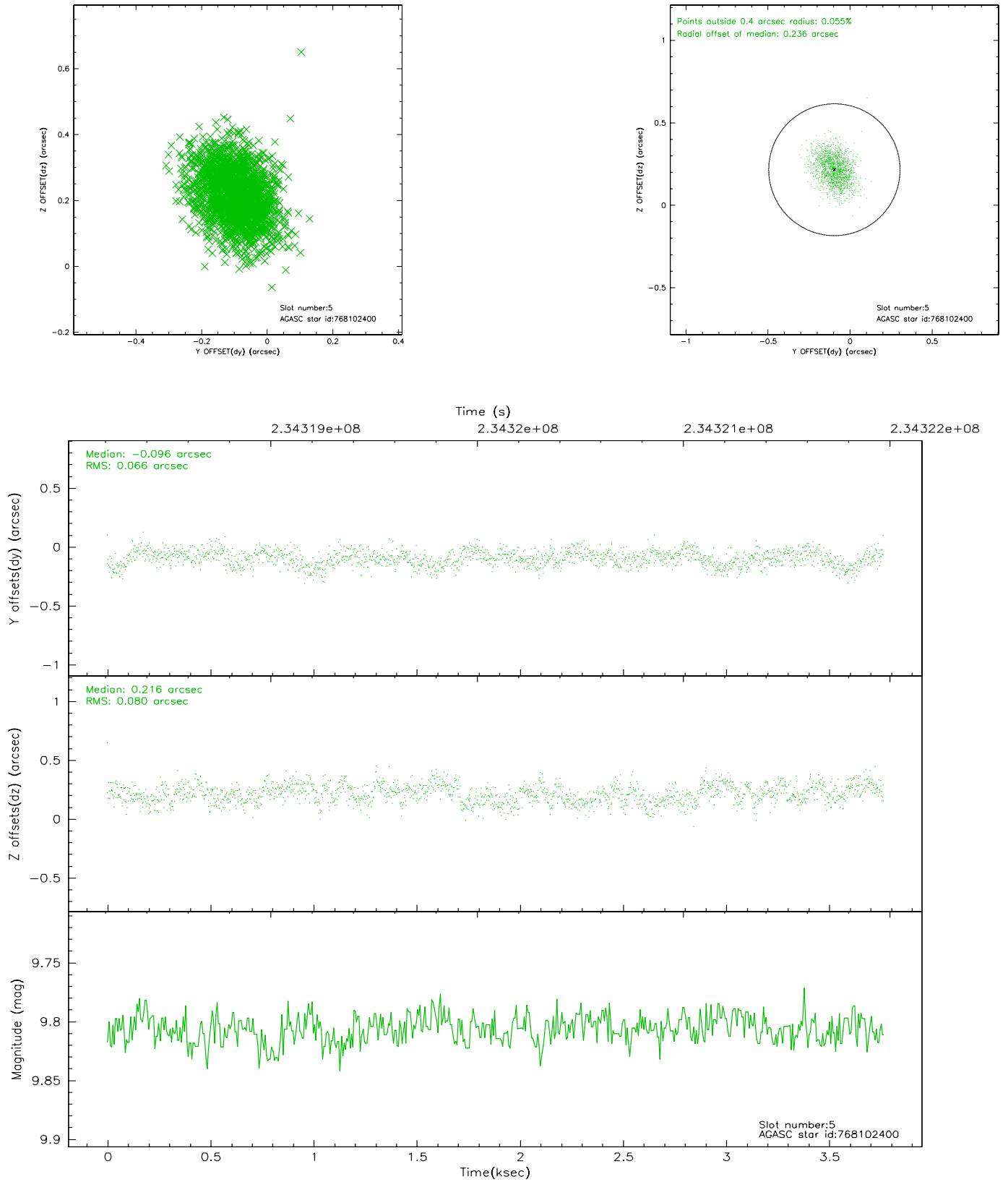
2.4.1 Slot 3



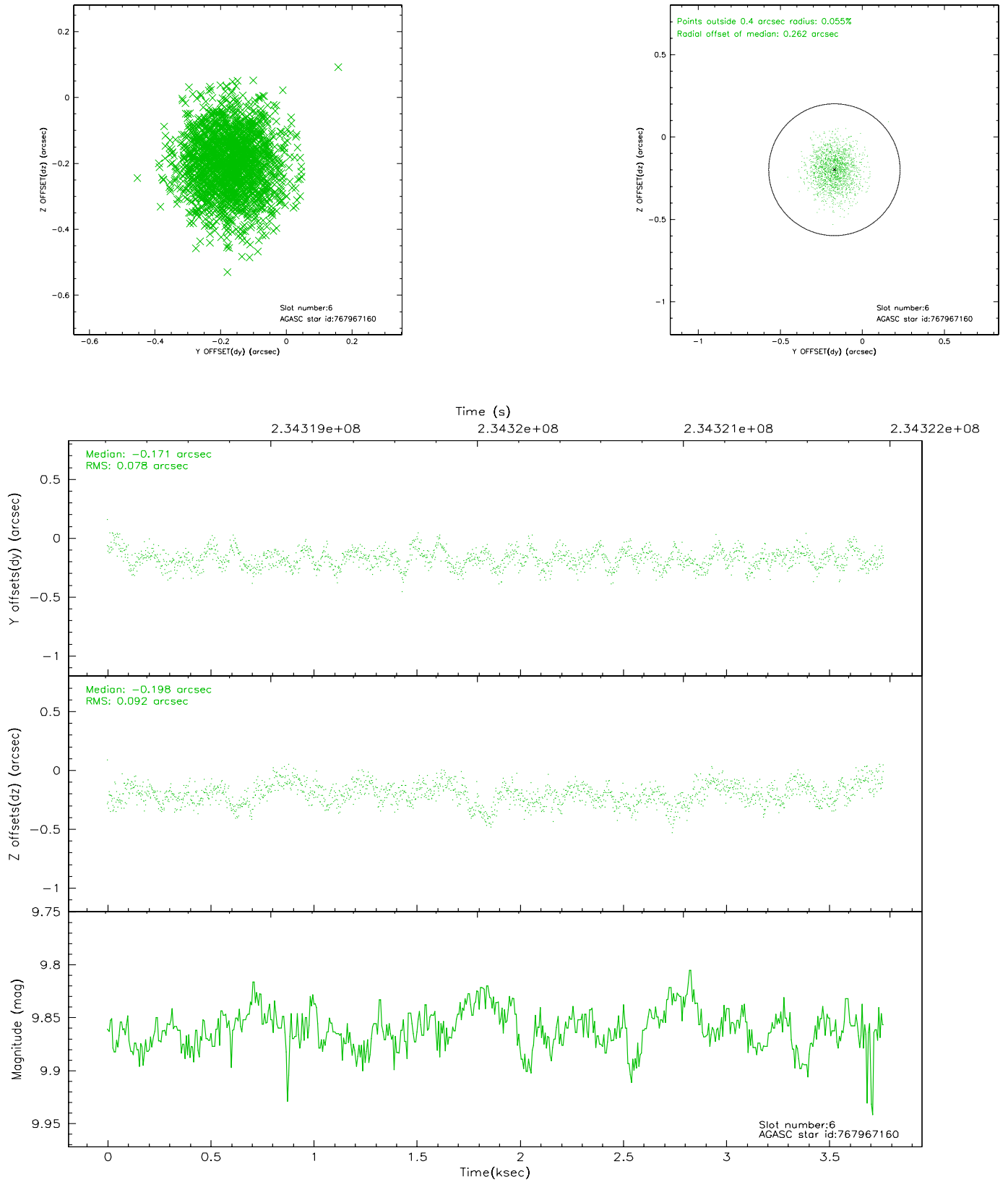
2.4.2 Slot 4



2.4.3 Slot 5

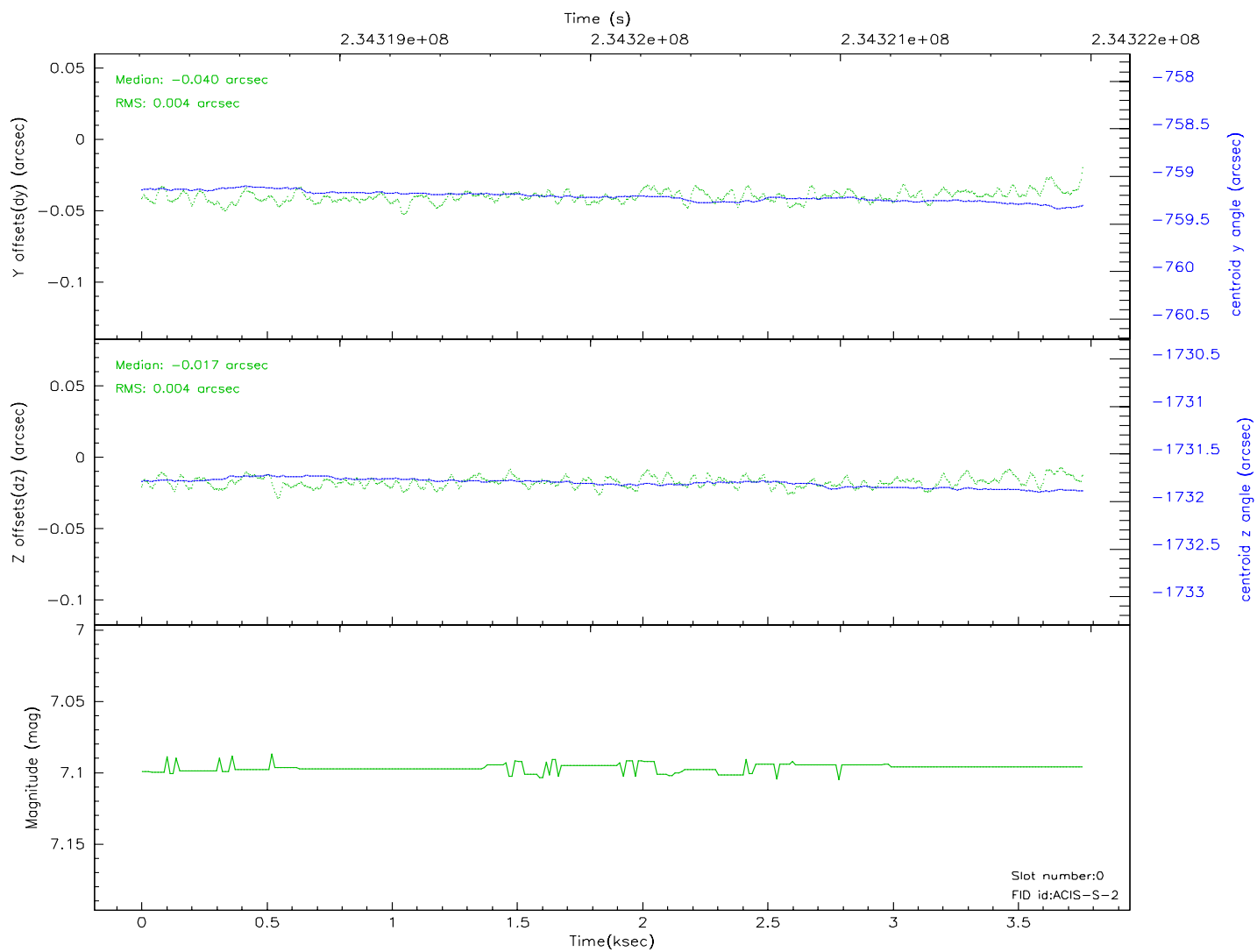
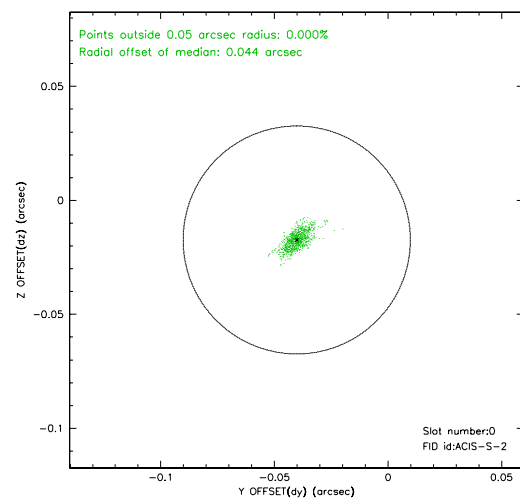
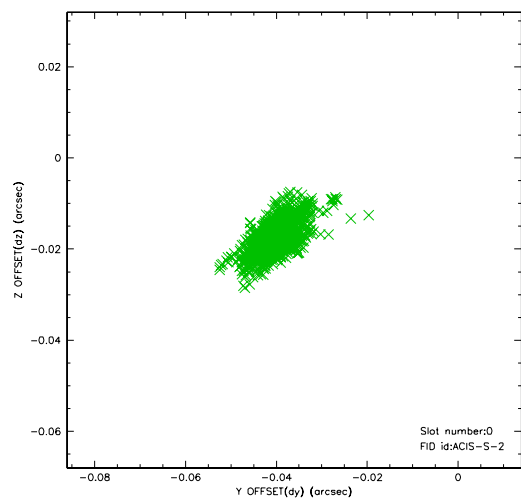


2.4.4 Slot 6

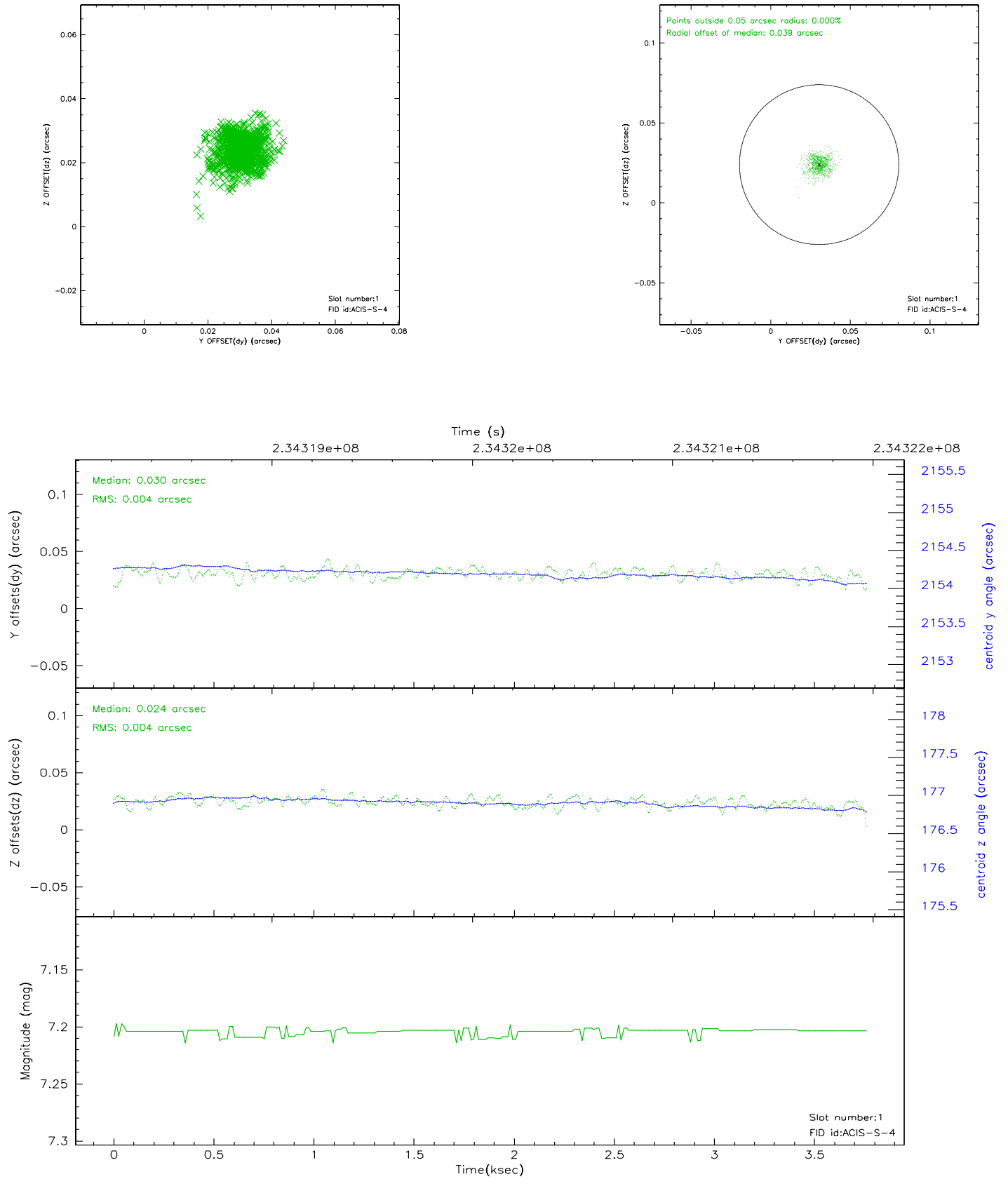


2.5 FID Slots

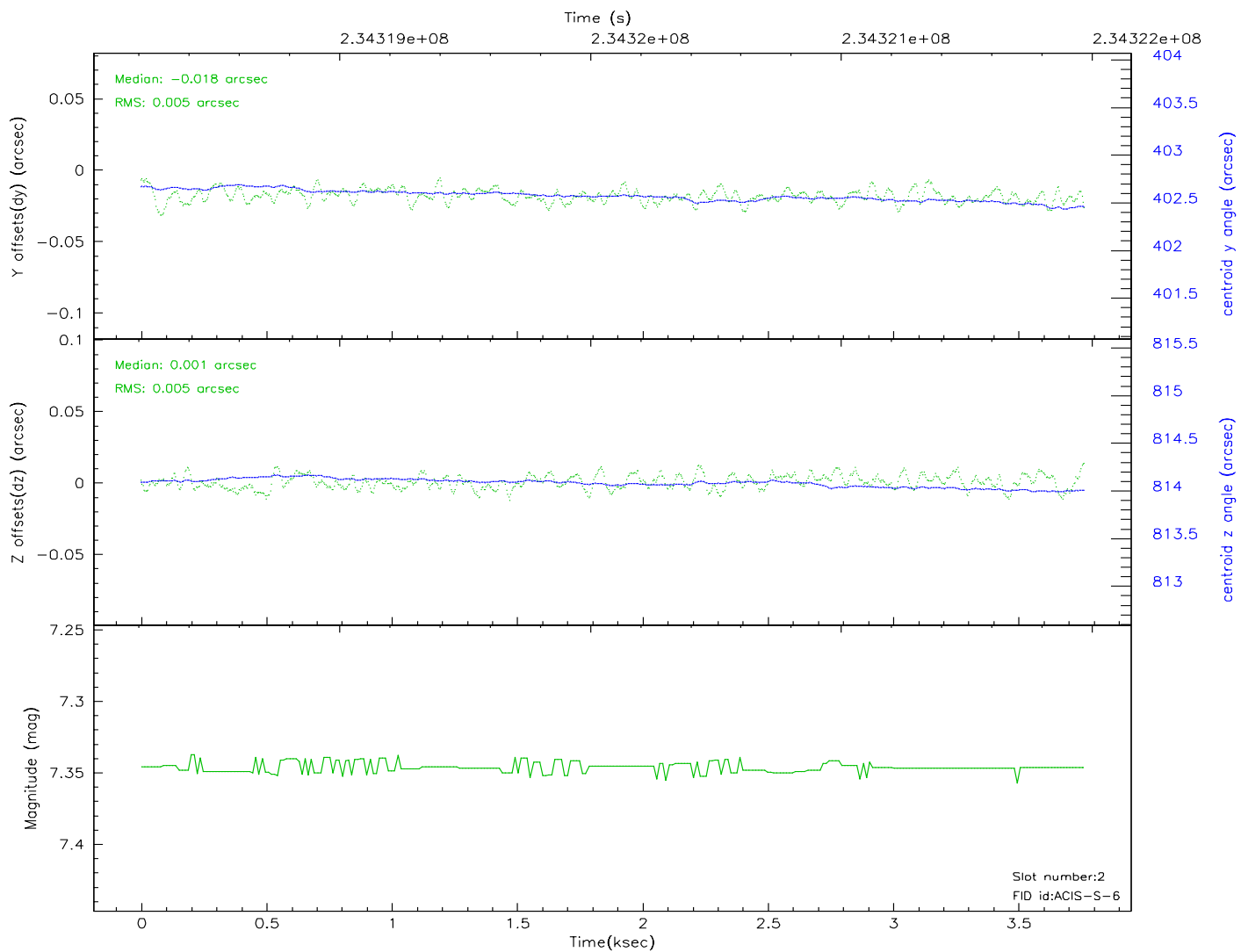
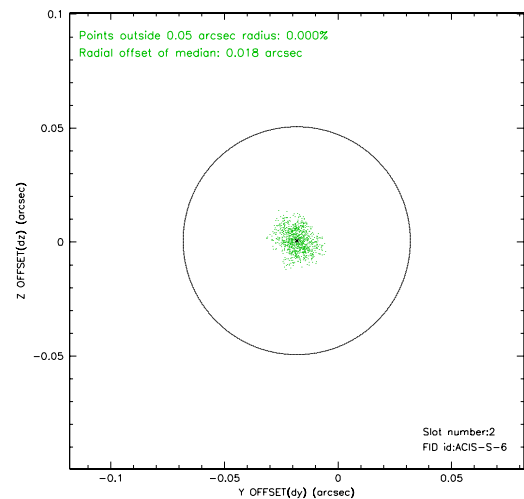
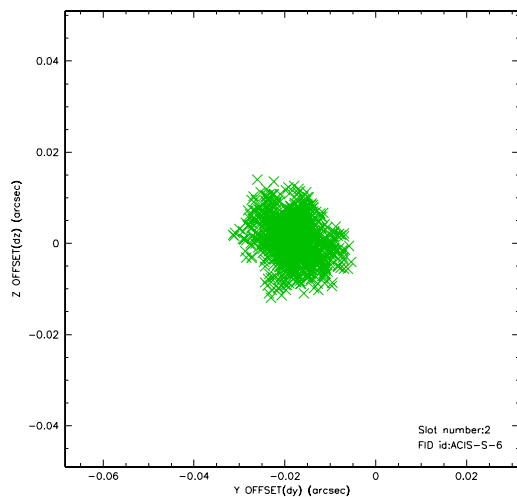
2.5.1 Slot 0



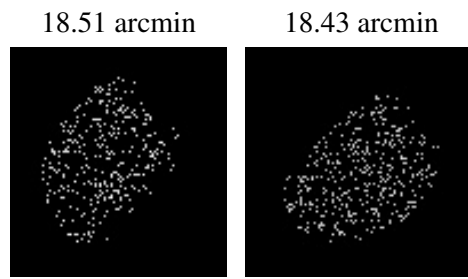
2.5.2 Slot 1



2.5.3 Slot 2



3 Point Sources



A Summary

A.1 Status

| | |
|----------------------------|---------------|
| V&V Scientist | Beth Sundheim |
| V&V Date (YYYY-MM-DD) | 2006.03.29 |
| V&V Edition | 1 |
| V&V Disposition and Status | OK |
| V&V Charge Time | 2.956799 |

A.2 Comments