

# V&V Reference Report

## L2 ASCDS Version : 10

Observation 53602 - L2 Version 1  
Chandra X-Ray Center

L2 Processing Date : Jun 30 2013

## Contents

<b>1</b>	<b>Front</b>	<b>2</b>
<b>2</b>	<b>OBI</b>	<b>3</b>
2.1	OBI . . . . .	3
2.1.1	Images . . . . .	3
2.1.2	Bias . . . . .	3
2.1.3	Parameters . . . . .	4
2.1.4	Events . . . . .	4
2.2	Compared Parameters . . . . .	5
2.3	Star Slots . . . . .	6
2.4	FID Slots . . . . .	6
<b>A</b>	<b>Summary</b>	<b>7</b>
A.1	Status . . . . .	7
A.2	Comments . . . . .	7

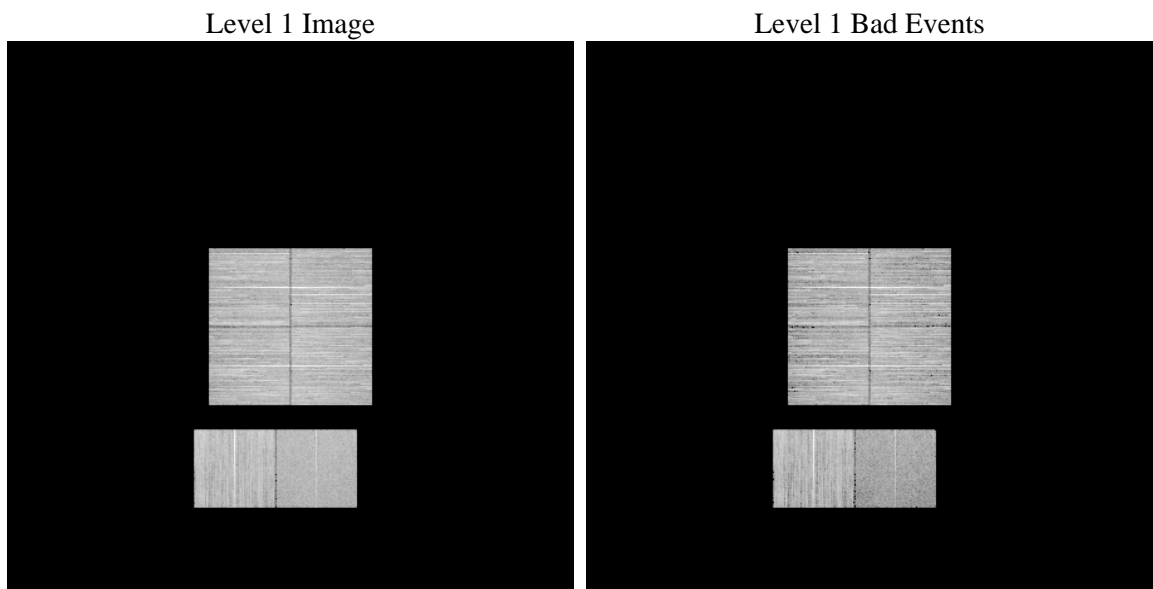
# 1 Front

seq_num	&#160	Sequence number
obs_id	53602	Observation id
title	ACIS-012367 diagnostics	Proposal title
observer	CHANDRA engineering request/realtime commanding	Principal investig
object	&#160	Source name
dtcycle	0	&#160
cycle	P	events from which exps? Prim/Second/Both
ra_targ	0.0	Observer's specified target RA [deg]
dec_targ	0.0	Observer's specified target Dec [deg]
ra_nom	303.96721680695	Nominal RA [deg]
dec_nom	-9.9902097533475	Nominal Dec [deg]
roll_nom	121.93207133686	Nominal Roll [deg]
revision	1	Processing version of data
ontime	8287.9999691844	Sum of GTIs [s]
livetime	8183.0523231401	Livetime [s]
ontime0	8287.9999691844	Sum of GTIs [s]
ontime1	8287.9999691844	Sum of GTIs [s]
ontime2	8287.9999691844	Sum of GTIs [s]
ontime3	8287.9999691844	Sum of GTIs [s]
ontime6	8287.9999691844	Sum of GTIs [s]
ontime7	8287.9999691844	Sum of GTIs [s]
l2events	203153	Number of level 2 events

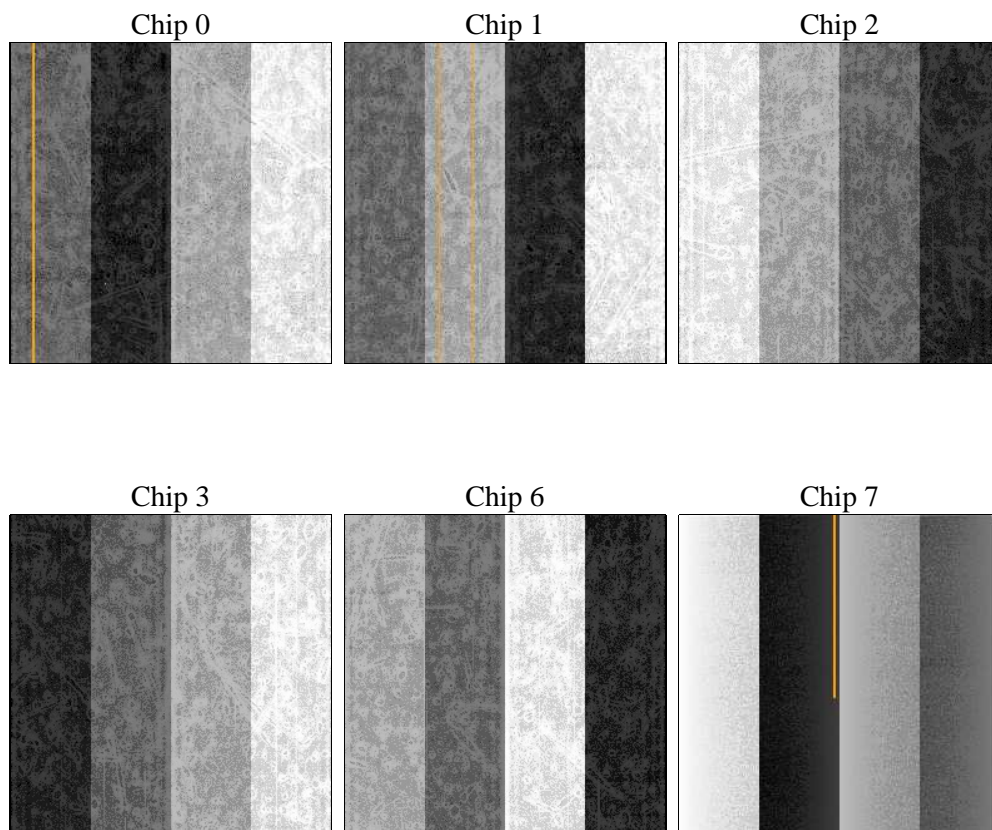
## 2 OBI

### 2.1 OBI

#### 2.1.1 Images



#### 2.1.2 Bias



### 2.1.3 Parameters

obi_num	0	Obi number	sched_exp_time	0.0	[s] Scheduled observation exposure time
ascdsver	10	Processing system revision	ontime	8287.9999691844	Sum of GTIs [s]
caldsver	4.5.7	&#160	ontime0	8287.9999691844	Sum of GTIs [s]
date	2013-06-30T17:18:24	Date and time of file creation	ontime1	8287.9999691844	Sum of GTIs [s]
revision	1	Processing version of data	ontime2	8287.9999691844	Sum of GTIs [s]
			ontime3	8287.9999691844	Sum of GTIs [s]
			ontime6	8287.9999691844	Sum of GTIs [s]
			ontime7	8287.9999691844	Sum of GTIs [s]
			l1events	860454	Number of level 1 events

### 2.1.4 Events

	ccd 0	ccd 1	ccd 2	ccd 3	ccd 6	ccd 7		ccd 0	ccd 1	ccd 2	ccd 3	ccd 6	ccd 7
level 1 events	147478	144038	144382	152731	153031	118794	grade 0 events	15965	15878	16382	16523	16372	8405
rejected events	116206	111840	113078	120993	119952	63080		10%	11%	11%	10%	10%	7%
rejected %	78%	77%	78%	79%	78%	53%	grade 1 events	68	69	99	74	66	74
								0%	0%	0%	0%	0%	0%
							grade 2 events	6124	6726	6064	6124	6611	13797
								4%	4%	4%	4%	4%	11%
							grade 3 events	2116	2121	2089	2169	2187	4603
								1%	1%	1%	1%	1%	3%
							grade 4 events	2100	2165	2080	2205	2143	4549
								1%	1%	1%	1%	1%	3%
							grade 5 events	2655	2741	2537	3005	2958	7334
								1%	1%	1%	1%	1%	6%
							grade 6 events	4967	5308	4689	4727	5766	24386
								3%	3%	3%	3%	3%	20%
							grade 7 events	113483	109030	110442	117904	116928	55646
								76%	75%	76%	77%	76%	46%

## 2.2 Compared Parameters

Parameter	Planned	Actual	Parameter	Planned	Actual
Instrument	ACIS	ACIS	Obspar format version number	7	7
Detector	ACIS-012367	ACIS-012367	Obspar file type	PREDICTED	ACTUAL
Grating	NONE	NONE	Obspar update status	NONE	UPDATED
Data mode	FAINT	FAINT	Number of optional ACIS chips dropped	0	0
Observation mode	SECONDARY	SECONDARY	On-chip summing requested	N	N
[deg] Pointing RA	0	303.9672168069457	Subarray requested	NONE	NONE
[deg] Pointing Dec	0	-9.990209753347477	Alternating exposures requested	N	N
[deg] Pointing Roll	0.0	121.9320713368622	[s] Primary exposure time	3.2	3.2
[mm] SIM focus pos	-1.429586	-1.428180813131781			
[mm] SIM defocus	0.1037507710433287	0.1051558262725154			
[mm] SIM translation stage pos	250.455976	250.466033080201			
[mm] SIM translation stage offset	0	-0.01005468664627074			
[s] Observation start time (MET)	488929114.919961	488929113.89496			
Observation start date	2013-06-29T21:38:35	2013-06-29T21:38:33			
[s] Observation end time (MET)	488942532.17069	488942531.14569			
Observation end date	2013-06-30T01:22:12	2013-06-30T01:22:11			
Read mode	TIMED	TIMED			

## **2.3 Star Slots**

## **2.4 FID Slots**

## A Summary

### A.1 Status

V&V Scientist	Beth Sundheim
V&V Date (YYYY-MM-DD)	2013.07.01
V&V Edition	1
V&V Disposition and Status	OK
V&V Charge Time	8.2879999691844

### A.2 Comments