

# V&V Reference Report

## L2 ASCDS Version : 10.1.1

Observation 53162 - L2 Version 1  
Chandra X-Ray Center

L2 Processing Date : Dec 16 2013

## Contents

<b>1</b>	<b>Front</b>	<b>2</b>
<b>2</b>	<b>OBI</b>	<b>3</b>
2.1	OBI . . . . .	3
2.1.1	Images . . . . .	3
2.1.2	Bias . . . . .	3
2.1.3	Parameters . . . . .	4
2.1.4	Events . . . . .	4
2.2	Compared Parameters . . . . .	5
2.3	Star Slots . . . . .	6
2.4	FID Slots . . . . .	6
<b>A</b>	<b>Summary</b>	<b>7</b>
A.1	Status . . . . .	7
A.2	Comments . . . . .	7

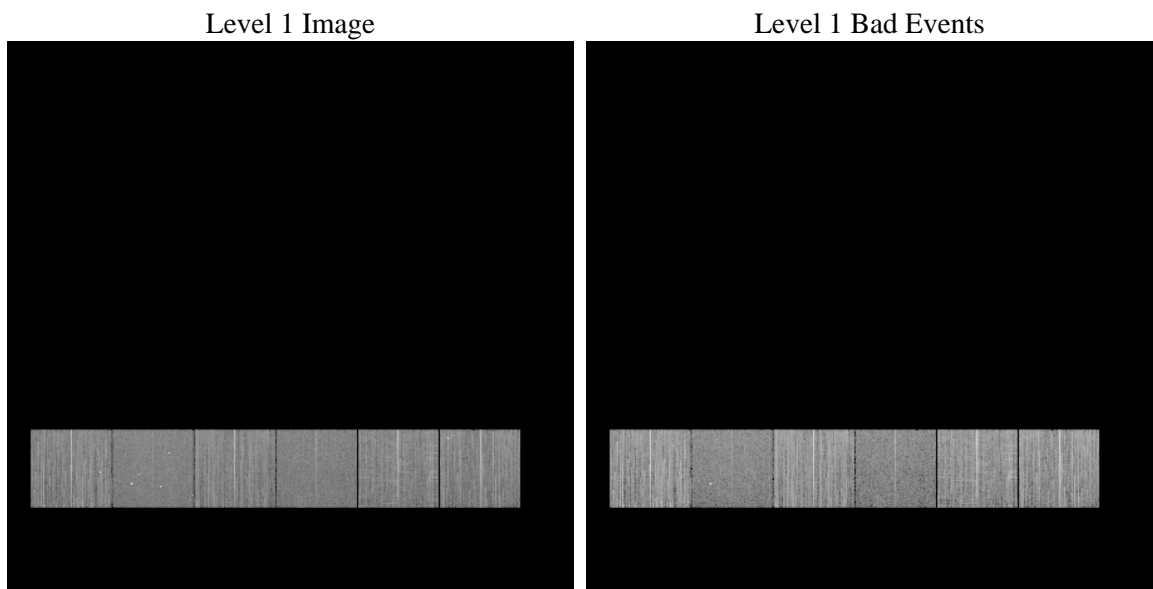
# 1 Front

seq_num	&#160	Sequence number
obs_id	53162	Observation id
title	ACIS-456789 diagnostics	Proposal title
observer	CHANDRA engineering request/realtime commanding	Principal investig
object	&#160	Source name
dtcycle	0	&#160
cycle	P	events from which exps? Prim/Second/Both
ra_targ	0.0	Observer's specified target RA [deg]
dec_targ	0.0	Observer's specified target Dec [deg]
ra_nom	75.306489993491	Nominal RA [deg]
dec_nom	20.65761346572	Nominal Dec [deg]
roll_nom	172.55499908117	Nominal Roll [deg]
revision	1	Processing version of data
ontime	8239.4686850309	Sum of GTIs [s]
livetime	8135.1355713287	Livetime [s]
ontime4	8239.345565021	Sum of GTIs [s]
ontime5	8239.4276450276	Sum of GTIs [s]
ontime6	8239.3866050243	Sum of GTIs [s]
ontime7	8239.4686850309	Sum of GTIs [s]
ontime8	8239.3045250177	Sum of GTIs [s]
ontime9	8239.5097250342	Sum of GTIs [s]
l2events	209120	Number of level 2 events

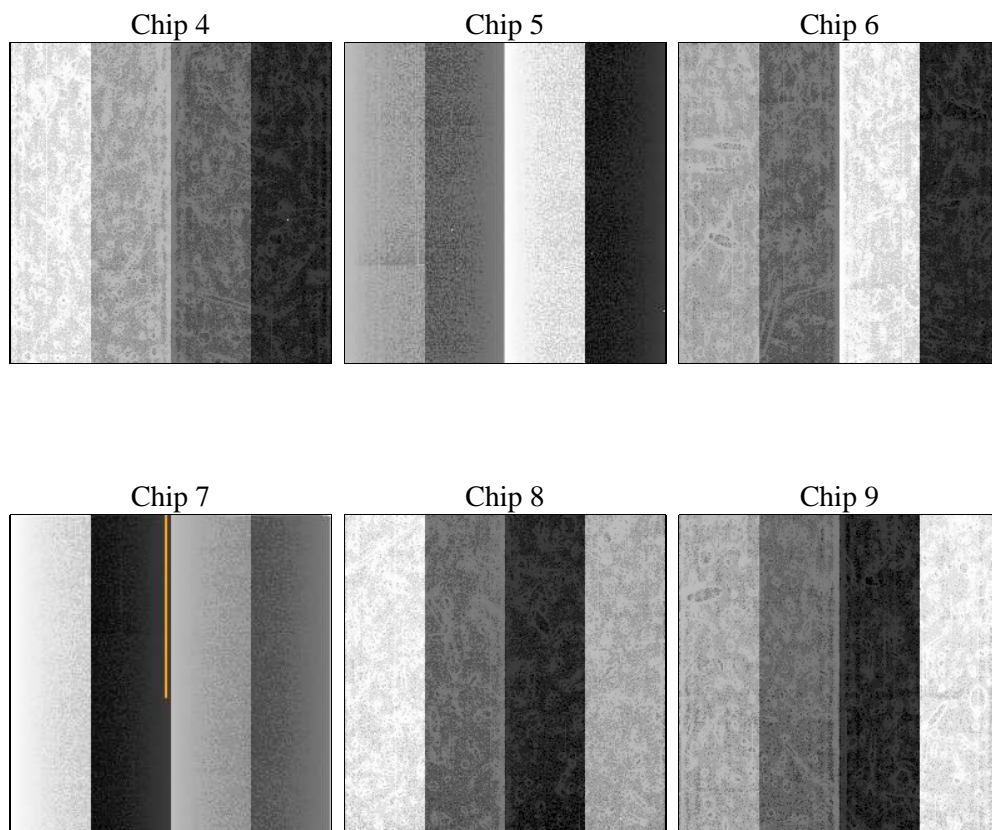
## 2 OBI

### 2.1 OBI

#### 2.1.1 Images



#### 2.1.2 Bias



### 2.1.3 Parameters

obi_num	0	Obi number	sched_exp_time	0.0	[s] Scheduled observation exposure time
ascdsver	10.1.1	Processing system revision	ontime	8239.4686850309	Sum of GTIs [s]
caldbver	4.6.0	&#160	ontime4	8239.345565021	Sum of GTIs [s]
date	2013-12-16T22:23:54	Date and time of file creation	ontime5	8239.4276450276	Sum of GTIs [s]
revision	1	Processing version of data	ontime6	8239.3866050243	Sum of GTIs [s]
			ontime7	8239.4686850309	Sum of GTIs [s]
			ontime8	8239.3045250177	Sum of GTIs [s]
			ontime9	8239.5097250342	Sum of GTIs [s]
			l1events	817345	Number of level 1 events

### 2.1.4 Events

	ccd 4	ccd 5	ccd 6	ccd 7	ccd 8	ccd 9		ccd 4	ccd 5	ccd 6	ccd 7	ccd 8	ccd 9
level 1 events	148881	124599	142557	113135	143404	144769	grade 0 events	17034	8450	14803	7547	16820	16934
rejected events	118671	67296	112657	61747	106311	113749		11%	6%	10%	6%	11%	11%
rejected %	79%	54%	79%	54%	74%	78%	grade 1 events	117	119	74	77	86	96
								0%	0%	0%	0%	0%	0%
							grade 2 events	5432	20692	6108	12788	7739	5622
								3%	16%	4%	11%	5%	3%
							grade 3 events	2041	1895	1976	4195	2766	1989
								1%	1%	1%	3%	1%	1%
							grade 4 events	1981	1807	1956	4246	2645	1876
								1%	1%	1%	3%	1%	1%
							grade 5 events	2883	5584	2886	6934	3738	3180
								1%	4%	2%	6%	2%	2%
							grade 6 events	3903	24755	5210	22878	7297	4772
								2%	19%	3%	20%	5%	3%
							grade 7 events	115490	61297	109544	54470	102313	110300
								77%	49%	76%	48%	71%	76%

## 2.2 Compared Parameters

Parameter	Planned	Actual
Instrument	ACIS	ACIS
Detector	ACIS-456789	ACIS-456789
Grating	NONE	NONE
Data mode	FAINT	FAINT
Observation mode	SECONDARY	SECONDARY
[deg] Pointing RA	0	75.30648999349089
[deg] Pointing Dec	0	20.65761346571967
[deg] Pointing Roll	0.0	172.5549990811691
SIM focus pos (mm)	-1.4281808131	-1.4281808131
[mm] SIM defocus	0.1051557500557434	0.1051557500557434
SIM translation stage pos (mm)	250.4660330802	250.4660330802
[mm] SIM translation stage offset	-0.01005726120527584	-0.01005726120527584
[s] Observation start time (MET)	503552587.768875	503552587.768875
Observation start date	2013-12-16T03:43:08	2013-12-16T03:43:07
[s] Observation end time (MET)	503562650.033808	503562650.033808
Observation end date	2013-12-16T06:30:50	2013-12-16T06:30:50
Read mode	TIMED	TIMED

Parameter	Planned	Actual
Obspar format version number	7	7
Obspar file type	PREDICTED	ACTUAL
Obspar update status	OVERRIDE	OVERRIDE
Number of optional ACIS chips dropped	0	0
On-chip summing requested	N	N
Subarray requested	NONE	NONE
Alternating exposures requested	N	N
[s] Primary exposure time	3.2	3.2

## **2.3 Star Slots**

## **2.4 FID Slots**

## A Summary

### A.1 Status

V&V Scientist	Jen Lauer
V&V Date (YYYY-MM-DD)	2013.12.17
V&V Edition	1
V&V Disposition and Status	OK
V&V Charge Time	8.2394686850309

### A.2 Comments